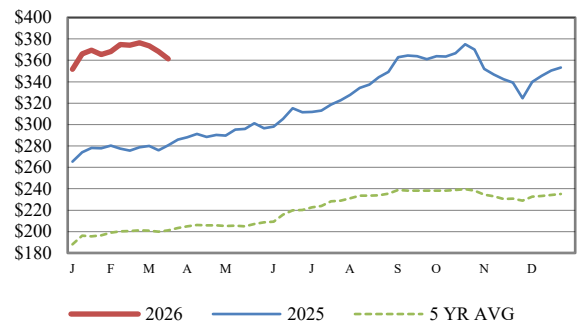


<b>Receipts:</b>	<b>This Week</b>	<b>Last Week</b>	<b>Year Ago</b>
<a href="#">SJ LS850</a>	209,800	210,700	250,400

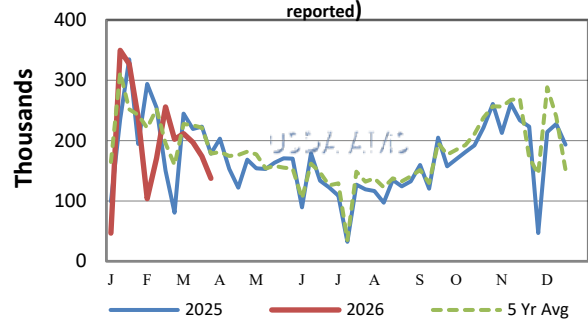
Compared to last week, steer and heifer calves under 700 lbs sold mostly 10.00-20.00 higher with instances of 25.00 higher; yearlings over 700 lbs traded mostly steady to 10.00 higher, with spots 15.00 higher. Markets rebounded this week as it still remains a prime time to buy calves and stockers during this narrow window between the end of winter and the beginning of spring planting in the major cattle production areas. Buyers for grazing cattle have thrown caution to the wind as they try to fill their needs early enough and while feeders are available. Overall demand remains very good despite a lot of uncertainty and volatility in the markets. Outside domestic and international economic factors, a beef plant temporarily closing along with fuel and fertilizer prices climbing higher all serve as a background for all commodity prices. But feeder cattle market remains very active as cattle feeders have their sights set on acquiring feeders as is evident in many prices seen this week. Monday at West Point (NE) Livestock sold 180 heifers weighing 905 lbs at 331.00; Tuesday in Lexington, KY at Blue Grass Stockyards, 71 value added steers weighing 652 lbs for 449.75; Wednesday at the Hub City Livestock Market in Aberdeen, SD sold 619 hd of 850-900 lb steers averaging 870 lbs for a weighted average price of 360.35. At Torrington (WY) Livestock Auction, there were 246 steers weighing 800-850 lbs averaging 817 lbs for a weighted average price of 368.77 and 363 heifers weighing 700-750 lbs averaging 720 lbs for a weighted average price of 373.23. Also on Wednesday in Dodge City, KS, Winter Livestock sold 511 hd of 800-850 lb steers averaging 818 lbs for a weighted average price of 361.44. Thursday in Dickinson, ND at Stockman's Livestock Exchange sold 77 steers weighing 800 lbs at 381.75 and 65 steers weighing 895 lbs at 355.00. Also on Thursday, Blue Grass Stockyards in Standford, KY sold 90 hd of steers weighing 560 lbs at 529.00; at Winter Livestock in Pratt, KS sold 309 hd steers averaging 820 lbs for a weighted price of 363.36. At Herried (SD) Livestock Market 716 hd of steers weighing 850-900 lbs averaging 869 lbs sold for a weighted average price of 359.05. Fed Cattle prices were pretty much steady this week with live prices at mostly 235.00 and dressed prices at 372.00 as packers held cash prices steady and managed to make some gains on boxed-beef. Packers have sharply decreased slaughter levels and that has helped set the stage for higher boxed-beef prices. Choice boxed-beef on Friday closed at 400.11, 2.19 higher than last Friday's close with Select closing at 392.94, 1.40 higher than last Friday's close. Weekly Cattle Slaughter under

**CME FEEDER CATTLE INDEX (\$/CWT)**



**NATIONWIDE REPORTED WEEKLY FEEDER CATTLE AUCTION RECEIPTS**

(Receipts vary depending on the number of auctions reported)



**REGIONAL WEIGHTED AVERAGE FEEDER STEER PRICES**

**NORTH CENTRAL REGION**

Steers:	This Week	Last Week	Last Year
600-700 lbs	\$438.11	\$433.86	\$340.77
700-800 lbs	\$391.92	\$383.22	\$311.47
800-900 lbs	\$360.68	\$352.29	\$285.80

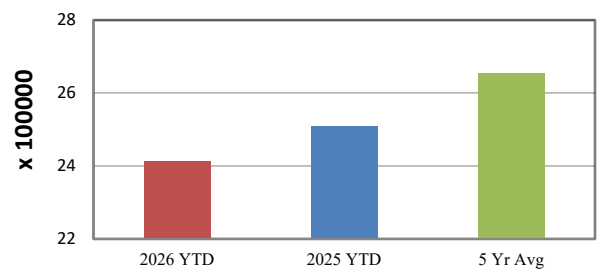
**SOUTH CENTRAL REGION**

Steers:	This Week	Last Week	Last Year
500-600 lbs	\$480.20	\$467.44	\$357.97
600-700 lbs	\$419.44	\$414.16	\$326.58
700-800 lbs	\$373.05	\$366.24	\$295.82

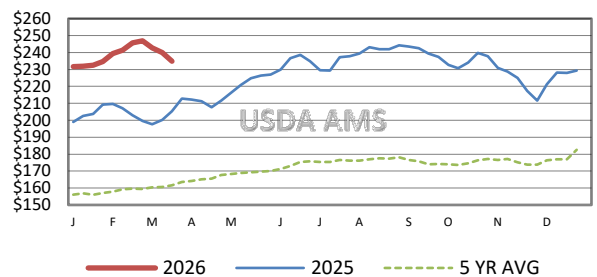
**SOUTHEAST REGION**

Steers:	This Week	Last Week	Last Year
400-500 lbs	\$512.98	\$495.97	\$382.90
500-600 lbs	\$459.70	\$447.04	\$339.07
600-700 lbs	\$402.49	\$394.88	\$305.02

**YEAR TO DATE AUCTION RECEIPTS**



**5 AREA WEEKLY WEIGHTED AVERAGE SLTR STEER PRICE (\$/CWT)**



**USDA Livestock, Poultry, & Grain Market News**

**St. Joseph, Missouri**

**Phone: 816-676-7000**



For detailed state-by-state feeder cattle quotes:

[National Feeder & Stocker Cattle Summary](#)

<http://www.ams.usda.gov/LSMarketNews>