



Weekly Cotton Market Review

Agricultural Marketing Service

Cotton and Tobacco Program ♦ Cotton Market News Division ♦ 3275 Appling Road ♦ Memphis, TN 38133 ♦ 901.384.3016

Mp_cn812

Vol. 107 No.33
March 20, 2026

Inside this Issue

[Market Overview](#)

[Spot Quotations](#)

[ICE Futures](#)

[Southeastern](#)

[Textile Mill Report](#)

[South Central](#)

[Southwestern](#)

[Western](#)

[Pima Quotations](#)

Featured

[Staple Distribution](#)

[Cotton Market Reports](#)

[Subscribe to this report](#)

[Subscribe to all Cotton Market reports](#)

Spot quotations averaged 291 points higher than the previous week, according to the USDA, Agricultural Marketing Services Cotton and Tobacco Program. Quotations for the base quality of cotton (color 41, leaf 4, staple 34, mike 35-36 and 43-49, strength 27.0-28.9, and uniformity 81.0-81.9) in the seven designated markets, averaged 64.59 cents per pound for the week ending Thursday, March 19, 2026. The weekly average was up from 61.68 cents last week and from 62.97 cents reported in the corresponding period a year ago. Daily average quotations ranged from a low of 62.64 cents on Friday, March 13 to a season high of 65.52 cents on Tuesday, March 17. Spot transactions reported in the Daily Spot Cotton Quotations for the week ended March 19 totaled 50,808 bales. This is compared to 25,925 reported last week and 23,387 bales reported the corresponding week a year ago. Total spot transactions for the season were 1,327,910 bales compared to 814,573 the corresponding week a year ago. The ICE May settlement price ended the week at 67.67 cents, compared to 65.14 cents last week.

41-4-34 Prices								
Date	SE	ND	SD	ETX-STX	WTX-KS-OK	DSW	SJV	7-MKT AVG
Mar 13	64.85	63.85	63.85	60.85	62.10	61.35	61.60	62.64
Mar 16	67.19	66.19	66.19	63.19	64.19	63.69	63.94	64.94
Mar 17	68.02	66.77	66.77	63.52	64.77	64.27	64.52	65.52
Mar 18	67.95	66.70	66.70	63.45	64.70	64.20	64.45	65.45
Mar 19	66.92	65.67	65.67	62.42	63.67	63.17	63.42	64.42
31-3-36 Prices								
Date	SE	ND	SD	ETX-STX	WTX-KS-OK	DSW	SJV	7-MKT AVG
Mar 13	70.60	68.60	68.10	67.60	66.35	67.35	74.00	68.94
Mar 16	72.94	70.94	70.44	69.94	68.44	69.69	76.34	71.25
Mar 17	73.77	71.52	71.02	70.27	69.02	70.27	76.92	71.83
Mar 18	73.70	71.45	70.95	70.20	68.95	70.20	76.85	71.76
Mar 19	72.67	70.42	69.92	69.17	67.92	69.17	75.82	70.73
Futures Settlement							Far Eastern A Index 1/	
Date	May-26	Jul-26	Oct-26	Dec-26	Mar-27	May-27	Current	
Mar 13	65.85	67.89	69.61	70.33	71.25	71.78	75.75	
Mar 16	68.19	70.06	71.67	71.98	72.87	73.32	76.45	
Mar 17	68.77	70.75	72.30	72.65	73.49	73.80	78.75	
Mar 18	68.70	70.57	72.12	72.64	73.47	73.79	79.35	
Mar 19	67.67	69.61	71.47	71.99	72.90	73.30	79.35	
Spot Transactions								
Date	SE	ND	SD	ETX-STX	WTX-KS-OK	DSW	SJV	PIMA
Mar 13	0	0	0	0	4,375	0	0	0
Mar 16	0	0	0	1,540	2,697	0	0	0
Mar 17	3,032	0	0	331	16,030	0	0	0
Mar 18	0	193	0	140	15,820	0	0	0
Mar 19	98	0	0	29	6,523	0	0	0
Weekly Totals	3,130	193	0	2,040	45,445	0	0	0

Source: USDA, AMS, Cotton and Tobacco Program, 1/ Cotlook

Southeastern Markets Regional Summary

Danny Pino ♦ Macon, GA ♦ 478.752.3560 ♦ Danny.Pino@usda.gov

Spot cotton trading was moderate. Supplies and producer offerings were moderate. Demand was good. Average local spot prices were higher. Trading of CCC-loan equities was inactive. No forward contracting activity was reported.

A mix of sunny to overcast conditions prevailed across the lower Southeast during the reporting period with breezy conditions observed at times. Daytime high temperatures in the 70s and 80s dropped into the 50s as the week progressed. Nighttime lows in the 40s and 50s dipped into the 20s and 30s. Widespread shower activity brought moisture to areas throughout Alabama, the Florida Panhandle, and Georgia early in the week. Precipitation totals measured from one-quarter of an inch to one and one-half inches of moisture, with heavier accumulations recorded in areas within eastern Georgia. Drought conditions were improved in some areas but overall, the rain acted to prevent worsening drought, according to the U.S. Drought Monitor. Producers attended local meetings and considered spring planting options.

Sunshine and clouds with occasionally windy conditions were observed across the upper Southeast during the period. Daytime high temperatures in the 60s and 70s dipped into the 50s later in the week. Nighttime lows were in the 30s and 40s. Widespread thunderstorms brought moisture to areas across the

Carolinas and eastern Virginia. Precipitation totals measured from one-quarter to one and one-half inches of moisture, with locally heavier accumulations recorded in some areas. Isolated improvements were noted in the Carolinas, but severe drought expanded in areas that missed significant precipitation in portions of South Carolina, according to the U.S. Drought Monitor. Producers attended local meetings and considered spring planting options.

Textile Mill

Domestic mill buyers inquired for a moderate volume of color 41, leaf 4, and staple 35 and longer for April through October delivery. No sales and no additional inquiries were reported. Yarn demand remained moderate to good. Mill buyers maintained a cautious undertone.

Demand through export channels was moderate. Agents for mills in Indonesia inquired for a moderate volume of color 31, leaf 3, and staple 36 and longer for October through December shipment. Representatives for mills in Mexico inquired for a moderate volume of color 42 and better, leaf 4, and staple 34 for May/June shipment. Peruvian mill buyers inquired for a moderate volume of color 42, leaf 4, and staple 35 for August through October shipment. No sales were reported.

Trading

- A light volume of color 31 and 41, leaf mostly 3, staple 36 and 37, mike 43-49, strength 29-33, and uniformity 82-84 sold for around 72.50 cents per pound, FOB car/truck, Georgia terms (Rule 5, compression charges paid, 30 days free storage).
- A heavy volume of color 31-51, leaf 2-4, staple 34-37, mike 37-49, strength 27-30, and uniformity 79-82 sold for around 72.00 cents, same terms as above.

South Central Markets Regional Summary

Aerielle McDaniel ♦ Memphis, TN ♦ 901.384.3016 ♦ Aerielle.McDaniel@usda.gov

North Delta

Spot cotton was inactive. Supplies of available cotton were light. Producer offerings were light. Demand was light. Trading of CCC-loan equities was slow. Average local spot prices were higher. Producers continued to delay planting decisions, hoping for changes in input costs before committing.

Intervals of sunny and cloudy skies fluctuated the weather pattern during the reporting period. A cold snap dominated daytime and nighttime temperatures with chilling wintry wind gusts of 25 to 35 miles per hour. The National Weather Service issued freeze warnings. Daytime high temperatures were in the low 30s and rebounded into the 70s later in the week. Overnight lows were in the teens to 50s. The region received a mix of scattered rain and snow, with precipitation totals varying from trace amounts to around one and three-quarters inches. Sandy soil in the Bootheel and Arkansas territories were more favorable, which influenced adequate soil conditions for the crop. No fieldwork was reported. Acreage was estimated to be down as growers evaluate the difference of income that will be received from each crop financially. Some producers began returning inputs to sellers due to shifting planting decisions driven by market price expectations and concerns over potential profit loss. Virtual and in-person industry meetings were planned and attended by all interested parties.

South Delta

Spot cotton and CCC-loan equities trading was inactive. Supplies of available cotton were light. Producer offerings were light. Demand was light. Average local spot prices were higher. Although growers are satisfied with current market levels, most were very dissatisfied with rising input costs.

Partly cloudy skies prevailed during most of the period. A cold front brought unseasonable conditions to the region. Daytime highs were in the 80s and dropped into the 40s. Sunshine brought spring-like weather and helped rebound high temperatures back into the low 80s. Overnight lows were in the 20s to 50s. Accumulated precipitation totals measured from trace amounts to around one and one-half inches of rain. Some fields experienced standing water, while other areas continued to face ongoing drought conditions. No fieldwork was done. Producers are keeping a watch on soil temperatures for planting as April swiftly approaches. Crop land for cotton has decreased. After observing market activities and comparing commodity prices, local experts chose to take part in alternative crops for better profits. Virtual and in-person industry meetings were planned and attended by all interested parties.

Trading

North Delta

- A light volume of CCC-loan equities traded for around 13.00 cents.

South Delta

- No trading activity was reported.

Southwestern Markets Regional Summary

Bethany Lindgren ♦ Memphis, TN ♦ 901.384.3016 ♦ Bethany.Lindgren@usda.gov
Jane Byers-Angle ♦ Lubbock, TX ♦ 806.283.9389 ♦ Jane.Byers-Angle@usda.gov

East Texas-South Texas

Spot cotton trading was moderate. Supplies and producer offerings were light. Demand was light. Average local spot prices were higher. A moderate volume of forward contracting was reported. Trading of CCC-loan equities was moderate. Foreign mill inquiries were light to moderate. Interest was best from China, Korea, and Turkey.

Mainly sunny, open skies with warm temps dominated the weather pattern in East Texas during the period. Daytime high temperatures climbed into the 90s, setting new records for high temperatures before briefly dipping into the 50s early in the week and then retreating back into the 70s to 90s. Nighttime lows were in the 30s to 50s. No rainfall was reported. If weather conditions cooperate and soil temperatures warm sufficiently, local reports indicate that some producers in central Texas could begin planting this weekend. In South Texas, sustained winds with mostly dry and sunny conditions were observed throughout the reporting period. Daytime high temperatures ranged from the 60s to 90s, with nighttime temperatures in the 40s to 60s. No rainfall was reported during the week. Planting was underway; however, delays were reported in some fields due to the lack of adequate moisture. Windy conditions have deteriorated soil conditions, even in areas where rain had been received in previous weeks. Planted fields were emerging across the region.

West Texas-Kansas-Oklahoma

Spot cotton trading was active. Supplies were moderate. Producer offerings were light. Demand was light. Average local spot prices were higher. Producer interest in forward contracting was light. Trading of CCC-loan equities was active. Foreign mill inquiries were light to moderate. Interest was best from China, Korea, and Turkey.

Texas experienced wide temperature swings, with highs from the upper 40s to upper 90s and lows from the 20s to 60s. A dry cold front brought wind gusts over 65 miles per hour, fueling wildfires and a few multi-vehicle accidents before clearer weather returned. Only brief, insignificant showers were reported, and soil remained dry ahead of planting. Ginning continued at the few remaining facilities. Industry meetings proceeded as planned.

Kansas transitioned from a brief wintry spell to sunny conditions. Highs ranged from the low 40s to upper 70s, and lows from the teens to 50s. Only trace moisture was recorded, leaving western areas in need of significant rainfall. Light fieldwork continued as growers finalized plans and secured seed, though rising input costs and supply may affect planting intentions.

Oklahoma temperature highs ranged from the low 50s to upper 90s and overnight lows in the 20s to 50s. A dry cold front brought blustery, frigid conditions before sunny weather returned. Strong winds contributed to wildfire activity. Drought persisted, and additional rainfall was needed ahead of sowing. Planting seed was booked, modules were moved to gin yards, and ginning operations continued.

Southwestern Markets Regional Summary

Bethany Lindgren ♦ Memphis, TN ♦ 901.384.3016 ♦ Bethany.Lindgren@usda.gov

Jane Byers-Angle ♦ Lubbock, TX ♦ 806.698.4648 ♦ Jane.Byers-Angle@usda.gov

Trading

East Texas/South Texas

- A lot containing a moderate volume of mostly color 41 and better, leaf 2-5, staple 35-37, mike 38-44, strength 28-32, and uniformity 79-83 sold for around 62.50 cents per pound, FOB warehouse (compression charges not paid).
- A lot containing a heavy volume of color 42 and better, leaf 2-5, staple 34-36, mike 37-41, strength 28-31, and uniformity 78-81 sold for 55.75 to 56.25 cents, same terms as above.
- A heavy volume of CCC-loan equities traded for 4.50 to 4.75 cents.

West Texas, Kansas, & Oklahoma

- In Texas, lots containing a light volume of color 31 and better, leaf 2 and 3, staple 34-41, mike 33-42, strength averaging 32.0, and uniformity averaging 82.0 sold for 68.00 to 68.50 cents per pound, FOB car/truck, (compression charged not paid).
- An even-running lot containing a heavy volume of color 11 and 21, leaf 2 and 3, staple 36 and 37, mike averaging 37.8, strength averaging 30.9, and uniformity averaging 80.6 sold for around 64.75 cents, same terms as above.
- In Kansas, lots containing a moderate volume of mostly color 21, 31, and 33, leaf 2-4, staple 35-39, mike 33-46, strength 28-34, and uniformity 80-84 traded for 60.00 to 65.00 cents, same terms as above.
- A mixed-lot containing a heavy volume of color 21-33, leaf 2-6, staple 34-38, mike 24-34, strength 24-33, uniformity 74-81, and 50 percent extraneous matter sold for around 52.50 cents, same terms as above.
- In Oklahoma, a mixed lot containing a heavy volume of color 33 and better, leaf 4 and better, staple 36-41, mike 33-49, strength 27-36, and uniformity 77-83 sold for around 67.50 cents, same terms as above.
- Mixed lots containing a heavy volume of color 11-32, leaf 5 and better, staple 37-40, mike 32-47, strength 28-37, and uniformity 78-83 traded for 61.50 to 62.25 cents, same terms as above.
- A heavy volume of CCC-loan equities traded for 5.50 to 10.25 cents.

Western Markets Regional Summary

Veronica Williamson ♦ Florence, SC ♦ 843.667.4381 ♦ Veronica.Williamson@usda.gov

[Desert Southwest \(DSW\)](#)

Spot cotton trading was slow. Supplies and producer offerings were light. Demand was light. Producer interest in forward contracting was light. Average local spot prices were higher. No Forward contracting or domestic mill activity was reported. Foreign mill inquiries were light.

Daytime temperatures throughout the DSW were unseasonably warm, with daily highs breaking records on multiple days as temperatures reached into the triple-digits. Nightly lows were in the 50s and 60s. No rain was recorded during the report period. Planting continued in Yuma, AZ, under favorable conditions. Fieldwork continued in central AZ, and producers were readying fields for sowing. Planting is expected to begin around the first week of April. In El Paso, TX, fields were pre-irrigated. Water supplies for the growing season were concerning. Producers reported that planting was expected to commence around the first week of April. This year's crop was estimated to be on par with last year, if water supplies and weather cooperate.

[San Joaquin Valley \(SJV\)](#)

Spot cotton trading was inactive. Supplies and demand were light. No forward contracting or domestic mill activity was reported. Average local spot prices were higher. Foreign mill inquiries were light.

Weather conditions throughout the period were mostly sunny. Temperatures soared into the low-to-mid 90s breaking record highs for multiple days. Nighttime lows were in the 50s. No rain was received. Fields were prepared for planting, which was expected to begin towards the end of March. The

California Department of Food and Agriculture received approval on an emergency external quarantine for the cotton jassid, which prohibits the shipment of plants or materials from cotton jassid infested areas into California, effective immediately. This quarantine will hopefully prevent the cotton jassid from spreading to California, where the pesticides known to treat the pest were prohibited.

[American Pima \(AP\)](#)

Spot cotton trading was inactive. Supplies were moderate. Demand was light. No forward contracting or domestic mill activity was reported. Average local spot prices were steady. Foreign mill inquiries were light.

Weather conditions in the Far West were sunny to partly cloudy. Daytime highs climbed into the low-to-mid 90s to triple-digits, breaking several record temperatures. Overnight lows were in the 50s and 60s. No precipitation occurred. Field preparation continued in California as growers get ready for planting, which was anticipated to begin toward the end of March. The California Department of Food and Agriculture received approval for an emergency external quarantine targeting the cotton jassid. The order immediately restricts the movement of plants or materials from infested regions into California. The goal was to prevent the pest from entering the state, where the pesticides effective against the cotton jassid are currently prohibited. In Yuma, planting moved forward, while central Arizona focused on field preparation and equipment maintenance. In El Paso, TX, fields were pre-irrigated, and planting was expected to begin around the first week of April.

[Trading](#)

Desert Southwest

- No trading activity was reported.

San Joaquin Valley

- No trading activity was reported.

American Pima

- No trading activity was reported.

Cotton Bales Classed by Office

For the week ending March 19, 10,537 of upland cotton bales were classed. Offices not classing upland cotton included Dumas, Florence, Memphis, Rayville, and Visalia. Classing data was withheld from Corpus Christi, Lamesa, and Macon to avoid disclosure of information from one gin or less than 500 bales classed. Quality data across all offices for the week was 50.4 percent for color 31, 43.1 percent for leaf 3, staple averaging 37.21, mike averaging 3.88, strength averaging 30.75, and uniformity averaging 81.22. For the entire U.S. upland crop, total classed during the season was 13,062,612 bales. American Pima bales classed for the season was 388,926.

Bales of Upland Cotton Classed by Office, Week Ending March 19, 2026

* Predominate Color - Predominate Leaf - Avg. Staple



USDA, AMS, Cotton and Tobacco Program, Market News, *Data Source: USDA Cotton Quality Data*

[For complete report click here.](#)

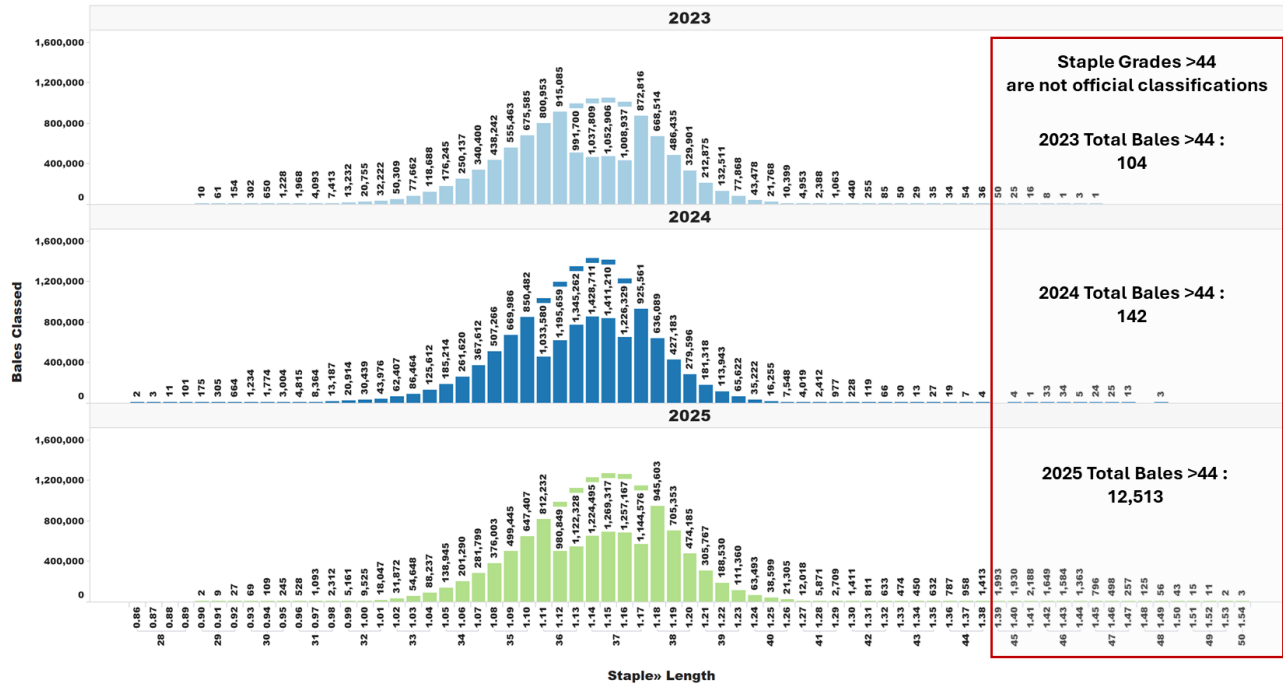
U.S. Upland Cotton Crop Staple Distribution

The official staple lengths for U.S. Upland Cotton, measured in 32nds of an inch, range from "24" to "44 & +". Currently, the longest staple included in the AMS Cotton Market News' weekly quality reports is the "40 & +" designation. Market News is in the process of updating its weekly reports to include all official staple length designations.

For more detailed information, AMS Cotton Market News posts daily per-bale quality data, which includes the instrument measurement for length in inches. You can find this data by office (<https://mymarketnews.ams.usda.gov/viewReport/3471>) and state (<https://mymarketnews.ams.usda.gov/viewReport/3472>). Using this data, Market News has calculated implied staple designations for lengths exceeding 1.35 inches. The accompanying chart shows the number of bales for each staple designation, with staples greater than "44" represented as implied staple lengths. Implied staple lengths are calculated and provided for informational purposes only and are not official designations.

Staple Distribution of U.S. Upland Cotton: 2023-2025 Crops (Classed through March 19, 2026)

Official Staple Grade (28-44), Unofficially Assigned Staple Grade (45-48)



Number of Bales in Certificated Stocks

Delivery Points	Stocks as of 3-19-2026	Awaiting Review	Non-Rain Grown Cotton
Dallas/FT. Worth, TX	87,759	0	0
Galveston, TX	10,658	0	0
Greenville, SC	0	0	0
Houston, TX	17,211	0	0
Memphis, TN	12	0	0
Total	115,640	0	0

World market prices for upland cotton, in cents per pound, in effect from 12:01 a.m., EDT, Friday through midnight, EDT, Thursday

Description	2025-2026					
	Feb	Feb	Feb 27	Mar	Mar	Mar
	13-19	20-26	Mar 05	06-12	13-19	20-26
Adjusted world price 1/	49.39	50.05	51.84	51.44	51.50	54.22
Course count adjustment	0.00	0.00	0.00	0.00	0.00	0.00
Loan Deficiency Payment (LDP)	2.61	1.95	0.16	0.56	0.50	0.00
Fine count adjustment 2024	0.00	0.00	0.00	0.00	0.00	0.00
Fine count adjustment 2025	0.00	0.00	0.00	0.00	0.00	0.00

1/ Color 41, leaf 4, staple 34, mike 35-36 & 43-49, strength readings of 26.0-28.9 grams per tex, length uniformity of 80.0-81.9 percent.
Source: Farm Service Agency, USDA.

Description	2024-2025				2025-2026	
	Through March 13, 2025		Through March 12, 2026		Through March 12, 2026	
	Week	Mkt. Year	Week	Mkt. Year	Week	Mkt. Year
Outstanding sales	-	4,628,000	-	-	-	4,051,000
Exports	351,000	5,596,600	273,900	5,303,000	273,900	5,303,000
Total export commitments	-	10,224,600	-	-	-	9,354,000
New sales	134,800	-	226,700	-	226,700	-
Buy-backs and cancellations	33,700	-	30,000	-	30,000	-
Net sales	101,100	-	196,700	-	196,700	-
Sales next marketing year	57,900	967,600	122,200	990,100	122,200	990,100

Net sales of Upland totaling 196,700 RB for 2025/2026 were down 22 percent from the previous week and 30 percent from the prior 4-week average. Increases primarily for Vietnam (75,700 RB), Turkey (27,800 RB), India (12,700 RB), Costa Rica (11,500 RB), and Indonesia (11,100 RB), were offset by reductions for South Korea (6,200 RB), Pakistan (1,500 RB), and Nicaragua (500 RB). Net sales of 122,200 RB for 2026/2027 were primarily for China (48,600 RB), Pakistan (22,000 RB), Vietnam (20,100 RB), Turkey (17,600 RB), and South Korea (6,200 RB). Exports of 273,900 RB were down 26 percent from the previous week, but up 8 percent from the prior 4-week average. The destinations were primarily to Vietnam (93,700 RB), Pakistan (36,400 RB), Turkey (23,200 RB), China (18,500 RB), and Mexico (17,700 RB). Net sales of Pima totaling 7,800 RB for 2025/2026 were up 9 percent from the previous week, but down 11 percent from the prior 4-week average. Increases were primarily for India (6,700 RB), China (400 RB), Peru (300 RB), Bangladesh (200 RB), and Vietnam (100 RB). Exports of 5,200 RB were down 71 percent from the previous week and 47 percent from the prior 4-week average. The destinations were primarily to India (4,100 RB), Thailand (400 RB), Peru (300 RB), and Japan (200 RB).

Exports for Own Account: For 2025/2026, new exports for own account totaling 400 RB were to Vietnam. Exports for own account totaling 4,000 RB to Vietnam were applied to new or outstanding sales. The current exports for own account outstanding balance of 8,400 RB were to India (5,300 RB), Vietnam (2,600 RB), and Turkey (500 RB).

Source: Export Sales Reporting Division, Foreign Agricultural Service, USDA.
NOTE: Data may not add due to rounding.

March 19, 2026

American Pima Spot Quotations

American Pima quotations are for cotton equal to the Official Standards, net weight, in mixed lots, UD Free, FOB warehouse. 1/

AMERICAN PIMA SPOT QUOTATIONS					
Color	Leaf	Staple			
		44	46	48	50
1	1	142.75	148.50	150.25	150.25
	2	142.50	148.25	150.00	150.00
	3	135.75	143.50	144.50	144.50
	4				
	5				
	6				
2	1	142.50	148.25	150.00	150.00
	2	142.25	148.00	149.75	149.75
	3	135.50	143.25	144.25	144.25
	4	125.50	133.75	134.75	134.75
	5				
	6				
3	1	134.25	142.00	143.00	143.00
	2	131.75	139.50	140.50	140.50
	3	129.50	137.25	138.25	138.25
	4	120.50	128.25	129.25	129.25
	5	104.50	111.75	112.75	112.75
	6				
4	1	115.50	123.25	125.00	125.00
	2	115.25	123.00	124.25	124.25
	3	114.00	121.75	122.75	122.75
	4	109.00	116.75	117.75	117.75
	5	97.75	105.50	106.50	106.50
	6				
5	1				
	2	92.25	102.25	102.25	102.25
	3	92.25	101.75	102.00	102.00
	4	92.25	96.25	96.25	96.25
	5	92.00	96.00	96.00	96.00
	6				
6	1				
	2	84.50	87.50	87.50	87.50
	3	84.50	87.50	87.50	87.50
	4	84.50	87.50	87.50	87.50
	5	84.25	87.25	87.25	87.25
	6	83.75	86.75	86.75	86.75

The current Pima spot quotations represent prices from local sales, export sales, and offerings last reported on December 17, 2025

Mike	
Range	Diff.
26 & Below	-2000
27-29	-1500
30-32	-1000
33-34	-500
35 & Above	0

Strength	
(Grams per Tex)	
Range	Diff.
34.9 & Below	-1650
35.0 – 35.9	-1400
36.0 – 36.9	-1150
37.0 – 37.9	-800
38.0 – 38.9	0
39.0 – 39.9	0
40.0 & Above	0

Extraneous Matter	
Type - Level	Diff.
Prep - Level 1	-810
Prep - Level 2	-1095
Other - Level 1	-715
Other - Level 2	-1035
Plastic - Level 1	-4000
Plastic - Level 2	-4000

1/ Pima spot quotations for color-leaf-staple combinations not quoted will be included as sales of those qualities which are reported.