



Weekly Cotton Market Review

Agricultural Marketing Service

Cotton and Tobacco Program ♦ Cotton Market News Division ♦ 3275 Appling Road ♦ Memphis, TN 38133 ♦ 901.384.3016

Mp_cn812

Vol. 107 No.31
March 6, 2026

Inside this Issue

[Market Overview](#)

[Spot Quotations](#)

[ICE Futures](#)

[Southeastern](#)

[Textile Mill Report](#)

[South Central](#)

[Southwestern](#)

[Western](#)

[Pima Quotations](#)

Featured

[Staple Distribution](#)

[Cotton Market Reports](#)

[Subscribe to this report](#)

[Subscribe to all Cotton Market reports](#)

Spot quotations averaged 120 points lower than the previous week, according to the USDA, Agricultural Marketing Services Cotton and Tobacco Program. Quotations for the base quality of cotton (color 41, leaf 4, staple 34, mike 35-36 and 43-49, strength 27.0-28.9, and uniformity 81.0-81.9) in the seven designated markets, averaged 61.26 cents per pound for the week ending Thursday, March 5, 2026. The weekly average was down from 62.46 cents last week and up from 61.05 cents reported in the corresponding period a year ago. Daily average quotations ranged from a high of 62.36 cents on Friday, February 27 to a low of 60.83 cents on Tuesday, March 2 and Thursday, March 5. Spot transactions reported in the Daily Spot Cotton Quotations for the week ended March 5 totaled 27,157 bales. This is compared to 111,390 reported last week and 12,601 bales reported the corresponding week a year ago. Total spot transactions for the season were 1,251,177 bales compared to 768,348 the corresponding week a year ago. The ICE May settlement price ended the week at 64.04 cents, compared to 65.36 cents last week.

41-4-34 Prices								
Date	SE	ND	SD	ETX-STX	WTX-KS-OK	DSW	SJV	7-MKT AVG
Feb 27	64.61	63.61	63.61	60.61	61.61	61.11	61.36	62.36
Mar 2	63.59	62.59	62.59	59.59	60.59	60.09	60.34	61.34
Mar 3	63.04	62.04	62.04	59.04	60.29	59.54	59.79	60.83
Mar 4	63.16	62.16	62.16	59.16	60.41	59.66	59.91	60.95
Mar 5	63.04	62.04	62.04	59.04	60.29	59.54	59.79	60.83
31-3-36 Prices								
Date	SE	ND	SD	ETX-STX	WTX-KS-OK	DSW	SJV	7-MKT AVG
Feb 27	70.36	68.36	67.86	67.36	65.86	67.11	73.76	68.67
Mar 2	69.34	67.34	66.84	66.34	64.84	66.09	72.74	67.65
Mar 3	68.79	66.79	66.29	65.79	64.54	65.54	72.19	67.13
Mar 4	68.91	66.91	66.41	65.91	64.66	65.66	72.31	67.25
Mar 5	68.79	66.79	66.29	65.79	64.54	65.54	72.19	67.13
Futures Settlement								Far Eastern A Index 1/
Date	Mar-26	May-26	Jul-26	Oct-26	Dec-26	Mar-27	Current	
Feb 27	63.61	65.61	67.32	68.67	69.70	70.64	75.65	
Mar 2	62.59	64.59	66.41	68.18	68.92	69.94	75.90	
Mar 3	62.04	64.04	65.95	67.68	68.51	69.49	74.95	
Mar 4	62.16	64.16	66.10	67.93	68.69	69.67	74.50	
Mar 5	63.03	64.04	66.00	67.75	68.73	69.69	74.75	
Spot Transactions								
Date	SE	ND	SD	ETX-STX	WTX-KS-OK	DSW	SJV	PIMA
Feb 27	0	0	0	0	6,585	377	0	0
Mar 2	0	2,159	0	88	2,923	0	0	0
Mar 3	1,177	0	0	0	2,480	0	0	0
Mar 4	0	0	0	0	6,956	93	0	0
Mar 5	0	0	0	0	4,319	0	0	0
Weekly Totals	1,177	2,159	0	88	23,263	470	0	0

Source: USDA, AMS, Cotton and Tobacco Program, 1/ Cotlook

Southeastern Markets Regional Summary

Danny Pino ♦ Macon, GA ♦ 478.752.3560 ♦ Danny.Pino@usda.gov

Spot cotton trading was slow. Supplies were moderate. Demand was good. Producer offerings were moderate. Average local spot prices were lower. Trading of CCC-loan equities was inactive.

Sunshine with a few afternoon clouds were observed across the lower Southeast during most of the week with patches of morning fog. Daytime high temperatures were in the 70s and 80s with nighttime lows in the 40s and 50s. Scattered showers were received early in the reporting period. Precipitation totals measured from around one to three inches with locally heavier amounts recorded in areas of north Alabama and central and north Georgia. Despite the moisture, only modest drought improvements were observed and extreme drought conditions expanded across south Georgia, according to the U.S. Drought Monitor. Producers considered planting options and prepared fields where soils were firm enough to support equipment.

A mix of clouds and sun dominated the weather pattern across the upper Southeast with fog developing late in the evenings. Daytime high temperatures were mostly in the 70s. Nighttime lows were in the 40s and 50s. Scattered rainfall was received early in the period. Precipitation totals measured from one-half to around one-inch of moisture. The rainfall improved droughty conditions in the Coastal Plain of the Carolinas, according to the

U.S. Drought Monitor. Producers completed fieldwork and considered spring planting options.

Textile Mill

Domestic mill buyers inquired for a moderate volume of color 42 and 51, leaf 4, and staple 35 and longer for April through June delivery. No sales and no additional inquiries were reported. Yarn demand remained moderate to good. The undertone from mill buyers remained cautious.

Demand through export channels was moderate. Agents for mills in Vietnam inquired for a moderate volume of color 31, leaf 3, and staple 36 for prompt shipment. Representatives for mills in Mexico inquired for a moderate volume of color 42 and 51, leaf 4, and staple 32 and longer for prompt delivery. No sales were reported.

Trading

- A moderate volume of color mostly 31, leaf mostly 3, staple 33-39, strength 28-31, and uniformity 80-83 sold for around 68.75 cents per pound, FOB car/truck, Georgia terms (Rule 5, compression charges paid, 30 days free storage).

South Central Markets Regional Summary

Aerielle McDaniel ♦ Memphis, TN ♦ 901.384.3016 ♦ Aerielle.McDaniel@usda.gov

North Delta

Spot cotton trading was inactive. Supplies of available cotton were light. Producer offerings were light. Demand was very light. Average local spot prices were lower. Trading of CCC-loan equities was slow. Forward contracting decisions were being evaluated by producers as they monitored economical inflations.

Mostly cloudy skies with periods of rainfall characterized the weather pattern during the period. Daytime high temperatures were in the 40s and rose mid-week into the 80s bringing springlike thermal conditions. Nighttime lows were in the 30s to 60s. Irregular rain showers produced from trace amounts to around three-quarters of an inch of rain. Thunderstorms and rain are expected in the nearby forecast. According to the U.S. Drought Monitor report, drought conditions have intensified to mostly moderate to exceptional drought in Arkansas. No field activities were reported. Cotton remained in some producers' hands due to declined marketing conditions and increasing world prices. Major logistical issues transpiring across the country have negatively impacted the price of inputs causing diesel prices, fertilizer prices, and freight costs to rise. Virtual and in-person industry meetings were planned and attended by all interested parties.

South Delta

Trading of spot cotton and CCC-loan equities was inactive. Supplies of available cotton were light. Producer offerings were light. Demand was light. Average local spot prices were lower. There was no interest in forward contracting. Producers kept watch on economic variabilities, which has caused risky shipping conditions.

In the South Delta, partly cloudy skies with sunshine mid-week brought warm temperatures to the region. Daytime highs were mostly in the 80s. Nighttime lows were in the 50s and 60s. Morning and afternoon scattered rainfall produced around one-quarter of an inch of rain. Potential thunderstorms are in the nearby forecast. According to the U.S. Drought Monitor report, drought conditions have increased slightly displaying mostly moderate to extreme drought in some locales in Louisiana. In Mississippi, drought conditions increased to mostly abnormal to moderate. No fieldwork was being done. Growers brainstormed during the pre-season to create more efficient blueprints of field layouts to hopefully improve yields of their cotton crop. Major logistical issues transpiring across the country have negatively impacted the price of inputs causing diesel prices, fertilizer prices, and freight costs to rise. Virtual and in-person industry meetings were planned and attended by all interested parties.

Trading

North Delta

- A heavy volume CCC-loan equity traded for around 10.00 cents.

South Delta

- No trading activity was reported.

Southwestern Markets Regional Summary

Bethany Lindgren ♦ Memphis, TN ♦ 901.384.3016 ♦ Bethany.Lindgren@usda.gov
Jane Byers-Angle ♦ Lubbock, TX ♦ 806.283.9389 ♦ Jane.Byers-Angle@usda.gov

East Texas-South Texas

Spot cotton trading was slow. Supplies and producer offerings were light. Demand was light. Average local spot prices were lower. No forward contracting was reported. Trading of CCC-loan equities was inactive. Foreign mill inquiries were light to moderate. Interest was best from Bangladesh, Korea, India, and Taiwan.

In East Texas, abundant sunshine, windy conditions, and spring-like temperatures dominated the weather pattern throughout the region. Daytime high temperatures were in the 70s to the 80s, with overnight lows climbing into the 50s to the 60s. Small pockets of the territory received trace amounts of rainfall, and chances for showers were in the forecast. Planting of other commodities continued, and some were expected to finish up soon. Most field preparations have been completed ahead of the start of cotton planting. In South Texas, the established trend of dry and very windy weather continued, but several chances for rainfall were in the forecast and would be beneficial as planting activity increases. Daytime high temperatures were in the 70s to the 90s, with nighttime temperatures in the 60s to the 70s. No precipitation was recorded during the period. Most producers have already purchased their seed, and it is now being delivered. Fieldwork was active, herbicides were sprayed, and fields were cultivated, turning topsoil to prepare for sowing. In other fields, planting had commenced in areas of the Valley and the Coastal Bend, where plants were emerging in a few fields. Producers remained optimistic, and local sources reported that supplemental programs have slightly strengthened grower sentiment as the season draws near. However, receiving a timely planting rainfall will still be crucial as topsoil and deep soil moisture is short compared to last season due to a dry fall in South Texas this year. Industry meetings were planned and attended across the region.

West Texas-Kansas-Oklahoma

Spot cotton trading was active. Supplies were heavy. Producer offerings were moderate. Demand was moderate. Average local spot prices were lower. Producer interest in forward contracting was light. Trading of CCC-loan equities was inactive. Foreign

mill inquiries were light to moderate. Interest was best from Bangladesh, Korea, India, and Taiwan.

Texas experienced a wide range of temperatures, with daytime highs in the mid-60s to low 90s and overnight lows dipping into the 30s to 60s. The Panhandle received isolated rain showers, though amounts were minimal. Forecasts called for additional precipitation, including the possibility of severe thunderstorms, tornadoes, and hail. Despite these chances, conditions remained parched, and a prolonged, soaking rainfall was still needed ahead of spring sowing. Ginning activity continued at a steady pace and gradually neared completion. Industry stakeholders also took part in several meetings during the period.

Daytime temperatures in Kansas ranged from the mid-40s to the low 80s, while overnight lows dipped into the 20s and 40s. Much-needed rainfall was in the nearby forecast, offering hope for some short-term relief. Fieldwork continued as producers completed strip-tilling in preparation for the upcoming sowing season. With spring planting approaching, growers evaluated commodity prices, finalized plans, and secured planting seed. Ginning operations were finished for the season.

Daytime temperatures in Oklahoma ranged from the mid-60s to the low 80s, while overnight lows fell into the 30s to 50s. Several areas received rainfall, and additional precipitation was in the nearby forecast, though significantly more moisture was still needed to alleviate the persistently dry conditions. Field and ginning operations advanced steadily as modules were transported from fields to gin yards when space became available. Ginning and planting were expected to overlap in May, creating a compressed operational period for producers. Fieldwork remained active across the state, with stalk shredding and other preparatory activities underway as growers prepped fields for the upcoming planting season.

Southwestern Markets Regional Summary

Bethany Lindgren ♦ Memphis, TN ♦ 901.384.3016 ♦ Bethany.Lindgren@usda.gov

Jane Byers-Angle ♦ Lubbock, TX ♦ 806.698.4648 ♦ Jane.Byers-Angle@usda.gov

Trading

East Texas/South Texas

- A lot containing a light volume of mostly color 41 and 51, leaf 4-6, staple 33-35, mike averaging 43.4, strength averaging 29.6, and uniformity averaging 79.9 traded for 54.25 cents per pound, FOB warehouse (compression charges not paid).

West Texas, Kansas, & Oklahoma

- In Texas, lots containing a heavy volume of color 31, leaf 3 and better, staple 36, mike 35-49, strength 29-35, and uniformity 77-82 sold for 64.00 to 65.00 cents per pound, FOB car/truck, (compression charges not paid).
- In Kansas, lots containing a moderate volume of color 32 and better, leaf 2-5, staple 35-37, mike 24-34, strength 25-31, uniformity 75-82, and 25 percent extraneous matter sold for 52.00 to 54.75 cents, same terms as above.
- In Oklahoma, even-running lots containing a heavy volume of color 21-41, leaf 2 and 3, staple 35-40, mike 37-44, strength 29-33, and uniformity 78-81 traded for 61.50 to 65.25 cents, same terms as above.

Southwestern Markets Regional Summary

Bethany Lindgren ♦ Memphis, TN ♦ 901.384.3016 ♦ Bethany.Lindgren@usda.gov

Jane Byers-Angle ♦ Lubbock, TX ♦ 806.283.9389 ♦ Jane.Byers-Angle@usda.gov

East Texas Cotton Seedlings



Photo courtesy of Dwight Jackson, National Cotton Council, Bayside, TX

Western Markets Regional Summary

Veronica Williamson ♦ Florence, SC ♦ 843.667.4381 ♦ Veronica.Williamson@usda.gov

[Desert Southwest \(DSW\)](#)

Spot cotton trading was slow. Supplies and producer offerings were light. Demand was light. Producer interest in forward contracting was light. Average local prices were lower. No Forward contracting or domestic mill activity was reported. Foreign mill inquiries were light.

Weather conditions throughout Arizona were sunny to partly cloudy. Daytime temperatures, in the mid-90s, broke record highs multiple days during the report period. Cooler temperatures, accompanied by possible rain showers, are in the nearby forecast. Nighttime lows ranged from the 40s to 60s. No rain was recorded. Planting advanced in Yuma, AZ. The Visalia Classing Office continues to class samples received from Arizona. Industry members attended meetings.

[San Joaquin Valley \(SJV\)](#)

Spot cotton trading was inactive. Supplies and demand were light. No forward contracting or domestic mill activity was reported. Average local prices were lower. Foreign mill inquiries were light.

Mostly sunny skies were the norm throughout the reporting period. Daily temperatures were in the 70s, with nightly lows in the 40s. In the nearby forecast, temperatures are expected to warm into the upper 80s. No rain was received. The California Department of Water Resources reported the statewide snowpack was 59 percent of normal and 54 percent of the April 1 average as of March 4.

[American Pima \(AP\)](#)

Spot cotton trading was inactive. Supplies were moderate. Demand was light. No forward contracting or domestic mill activity was reported. Average local spot prices were steady. Foreign mill inquiries were light.

Mostly sunny skies were the norm throughout the reporting period. Daily temperatures were in the 70s, with nightly lows in the 40s. In the nearby forecast, temperatures are expected to warm into the upper 80s. No rain was received. Fieldwork was active with pre-irrigation occurring in some fields. The current price of Pima is causing some producers to be hesitant in their planting decisions. Weather conditions throughout Arizona were sunny to partly cloudy. Daily temperatures in the mid-90s broke record highs multiple days during the report period. Cooler temperatures, accompanied by possible rain showers, are in the nearby forecast. Nighttime lows ranged from the 40s to 60s. No rain was recorded. Planting expanded in Yuma, AZ. Members of the cotton industry attended meetings.

[Trading](#)

Desert Southwest

- In Texas, a light volume of 2024-crop cotton, color 11 and 21, leaf 3 and better, staple 35-37, mike 37-49, strength 27-33, and uniformity 78-82 sold for around 61.50 cents per pound, FOB car/truck, (compression charges not paid).

San Joaquin Valley

- No trading activity was reported.

American Pima

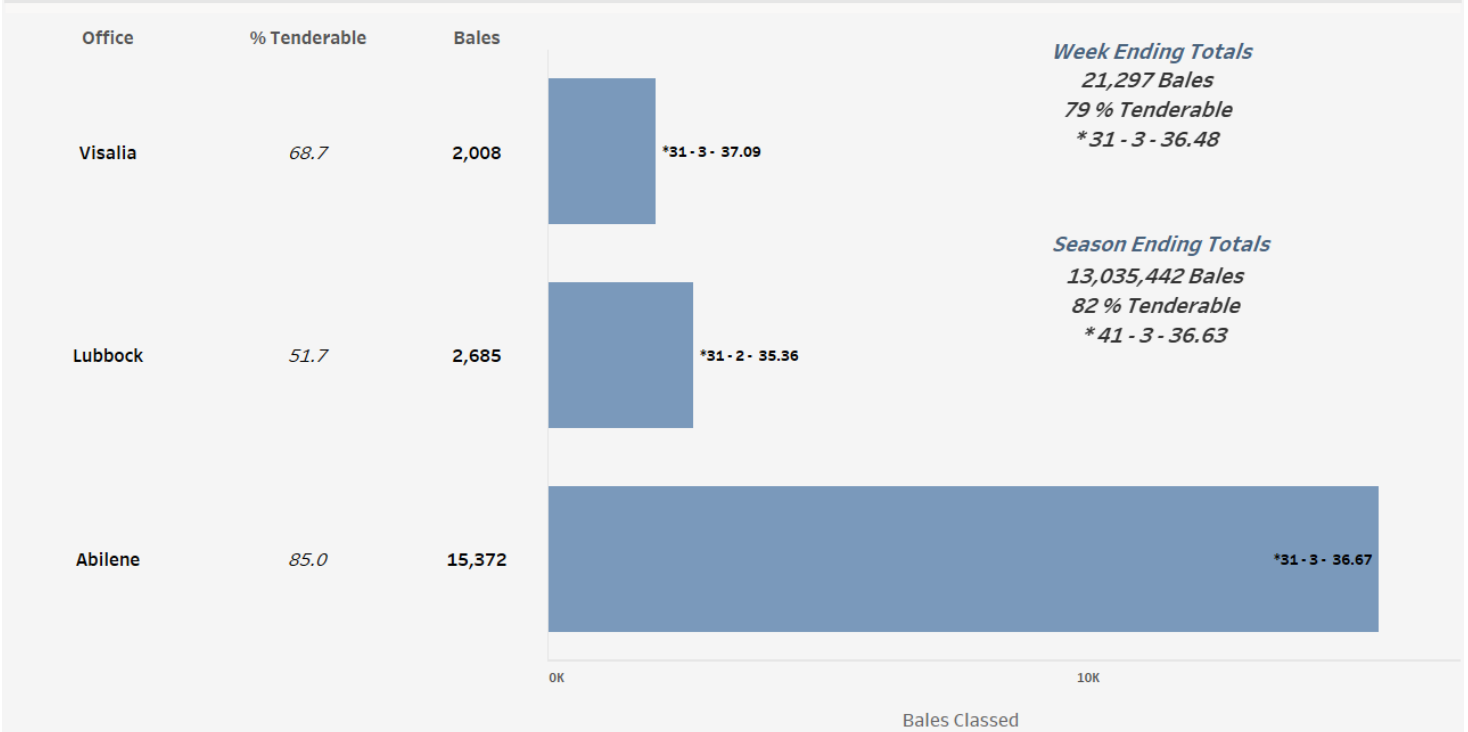
- No trading activity was reported.

Cotton Bales Classed by Office

For the week ending March 5, 21,297 bales were classed. Offices not classing cotton included Corpus Christi, Dumas, Florence, Memphis, and Rayville. Classing data was withheld from Lamesa and Macon to avoid disclosure of information from one gin or less than 500 bales classed. Quality data across all offices for the week was 42.0 percent for color 31, 38.7 percent for leaf 3, staple averaging 36.48, mike averaging 4.00, strength averaging 30.40, and uniformity averaging 80.69. For the entire U.S. upland crop, total classed during the season was 13,035,442 bales.

Bales of Upland Cotton Classed by Office, Week Ending Mar. 5, 2026

* Predominate Color - Predominate Leaf - Avg. Staple



USDA, AMS, Cotton and Tobacco Program, Market News, *Data Source: USDA Cotton Quality Data*

[For complete report click here.](#)

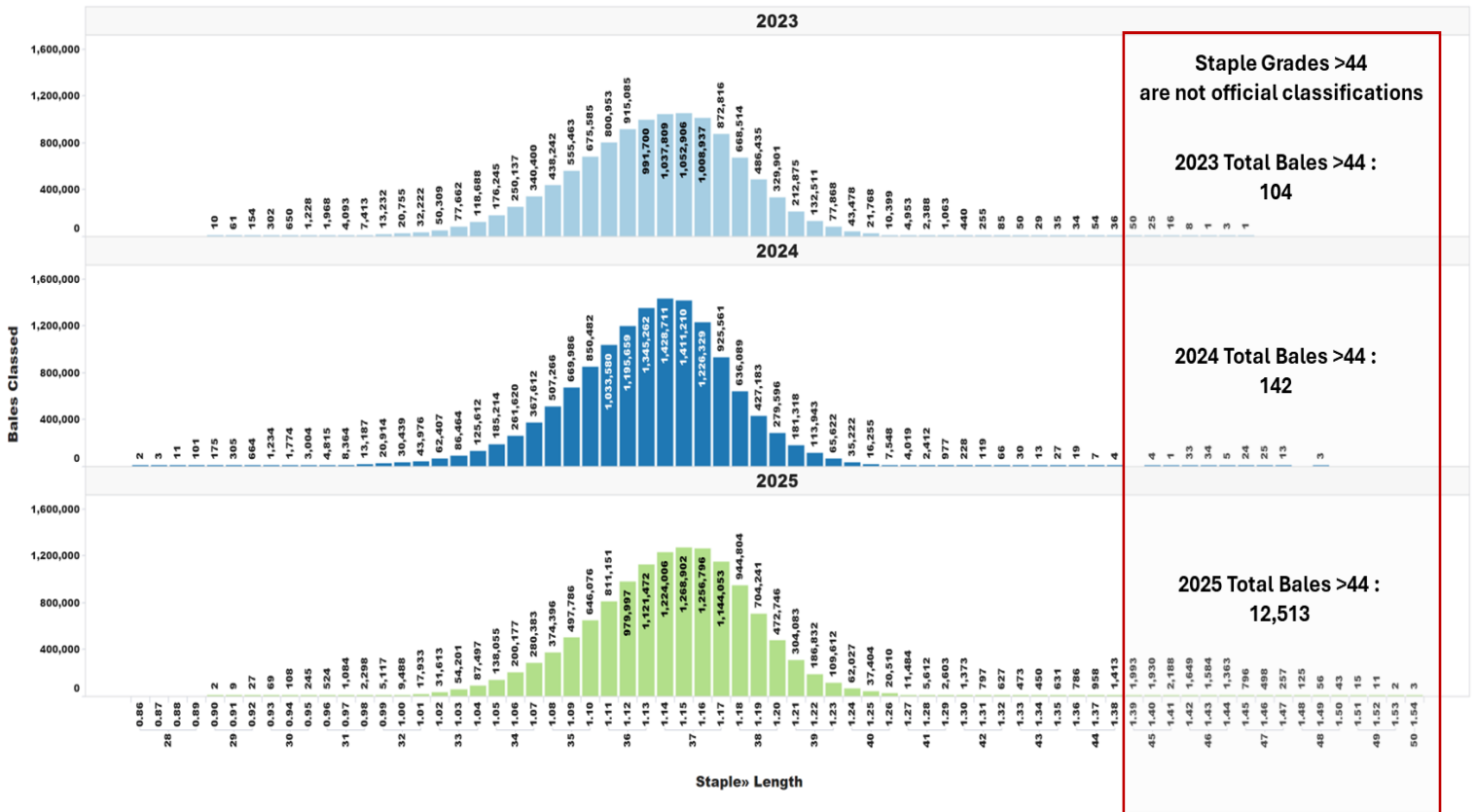
U.S. Upland Cotton Crop Staple Distribution

The official staple lengths for U.S. Upland Cotton, measured in 32nds of an inch, range from "24" to "44 & +". Currently, the longest staple included in the AMS Cotton Market News' weekly quality reports is the "40 & +" designation. Market News is in the process of updating its weekly reports to include all official staple length designations.

For more detailed information, AMS Cotton Market News posts daily per-bale quality data, which includes the instrument measurement for length in inches. You can find this data by office (<https://mymarketnews.ams.usda.gov/viewReport/3471>) and state (<https://mymarketnews.ams.usda.gov/viewReport/3472>). Using this data, Market News has calculated implied staple designations for lengths exceeding 1.35 inches. The accompanying chart shows the number of bales for each staple designation, with staples greater than "44" represented as implied staple lengths. Implied staple lengths are calculated and provided for informational purposes only and are not official designations.

Staple Distribution of U.S. Upland Cotton: 2023-2025 Crops (Classed through Mar. 5, 2026)

Official Staple Grade (28-44), Unofficially Assigned Staple Grade (45-48)



Number of Bales in Certificated Stocks

Delivery Points	Stocks as of 3-05-2026	Awaiting Review	Non-Rain Grown Cotton
Dallas/FT. Worth, TX	96,335	0	0
Galveston, TX	14,780	0	0
Greenville, SC	0	0	0
Houston, TX	17,377	0	0
Memphis, TN	12	0	0
Total	128,504	0	0

World market prices for upland cotton, in cents per pound, in effect from 12:01 a.m., EDT, Friday through midnight, EDT, Thursday

Description	2025-2026					
	Jan 30	Feb	Feb	Feb	Feb 27	Mar
	Feb 05	06-12	13-19	20-26	Mar 05	06-12
Adjusted world price 1/	50.23	49.78	49.39	50.05	51.84	51.44
Course count adjustment	0.00	0.00	0.00	0.00	0.00	0.00
Loan Deficiency Payment (LDP)	1.77	2.22	2.61	1.95	0.16	0.56
Fine count adjustment 2024	0.00	0.00	0.00	0.00	0.00	0.00
Fine count adjustment 2025	0.00	0.00	0.00	0.00	0.00	0.00

1/ Color 41, leaf 4, staple 34, mike 35-36 & 43-49, strength readings of 26.0-28.9 grams per tex, length uniformity of 80.0-81.9 percent.

Source: Farm Service Agency, USDA.

Description	2025-2026			
	2024-2025		2025-2026	
	Through February 27, 2025		Through February 26, 2026	
	Week	Mkt. Year	Week	Mkt. Year
Outstanding sales	-	5,009,600	-	4,245,200
Exports	334,000	4,842,100	282,200	4,658,900
Total export commitments	-	9,851,700	-	8,904,100
New sales	243,500	-	150,500	-
Buy-backs and cancellations	2,000	-	100	-
Net sales	241,500	-	150,400	-
Sales next marketing year	105,600	799,500	54,600	831,300

Net sales of Upland totaling 150,400 RB for 2025/2026 were down 41 percent from the previous week and 50 percent from the prior 4-week average. Increases primarily for Vietnam (50,800 RB, including 3,500 RB switched from unknown destinations, 1,900 RB switched from South Korea, and 100 RB switched from Japan), Pakistan (27,900 RB), Mexico (14,400 RB), India (13,900 RB), and Indonesia (12,400 RB), were offset by reductions for unknown destinations (7,000 RB) and South Korea (1,900 RB). Net sales of 54,600 RB for 2026/2027 were reported for Indonesia (26,400 RB), Mexico (20,800 RB), Vietnam (6,600 MT), and Thailand (900 RB). Exports of 282,200 RB--a marketing-year high--were up 46 percent from the previous week and 43 percent from the prior 4-week average. The destinations were primarily to Vietnam (94,600 RB), Pakistan (39,800 RB), Turkey (31,500 RB), China (30,300 RB), and Indonesia (20,300 RB). Net sales of Pima totaling 7,500 RB for 2025/2026 were down 50 percent from the previous week, but up 9 percent from the prior 4-week average. Increases were primarily for Pakistan (2,300 RB), Peru (1,800 RB), India (1,800 RB), Costa Rica (1,300 RB), and Indonesia (300 RB). Exports of 12,400 RB were up noticeably from the previous week and from the prior 4-week average. The destinations were primarily to India (4,600 RB), Vietnam (2,400 RB), China (1,600 RB), Costa Rica (1,200 RB), and Thailand (1,100 RB).

Exports for Own Account: For 2025/2026, new exports for own account totaling 4,400 RB were to Vietnam. Exports for own account totaling 500 RB to Turkey were applied to new or outstanding sales. The current exports for own account outstanding balance of 47,600 RB were to India (31,600 RB), Bangladesh (4,400 RB), Vietnam (7,600 RB), Pakistan (2,300 RB), and Turkey (1,700 RB).

Source: Export Sales Reporting Division, Foreign Agricultural Service, USDA.

March 5, 2026

NOTE: Data may not add due to rounding.

American Pima Spot Quotations

American Pima quotations are for cotton equal to the Official Standards, net weight, in mixed lots, UD Free, FOB warehouse. 1/

AMERICAN PIMA SPOT QUOTATIONS

AMERICAN PIMA SPOT QUOTATIONS					
Color	Leaf	Staple			
		44	46	48	50
1	1	142.75	148.50	150.25	150.25
	2	142.50	148.25	150.00	150.00
	3	135.75	143.50	144.50	144.50
	4				
	5				
	6				
2	1	142.50	148.25	150.00	150.00
	2	142.25	148.00	149.75	149.75
	3	135.50	143.25	144.25	144.25
	4	125.50	133.75	134.75	134.75
	5				
	6				
3	1	134.25	142.00	143.00	143.00
	2	131.75	139.50	140.50	140.50
	3	129.50	137.25	138.25	138.25
	4	120.50	128.25	129.25	129.25
	5	104.50	111.75	112.75	112.75
	6				
4	1	115.50	123.25	125.00	125.00
	2	115.25	123.00	124.25	124.25
	3	114.00	121.75	122.75	122.75
	4	109.00	116.75	117.75	117.75
	5	97.75	105.50	106.50	106.50
	6				
5	1				
	2	92.25	102.25	102.25	102.25
	3	92.25	101.75	102.00	102.00
	4	92.25	96.25	96.25	96.25
	5	92.00	96.00	96.00	96.00
	6				
6	1				
	2	84.50	87.50	87.50	87.50
	3	84.50	87.50	87.50	87.50
	4	84.50	87.50	87.50	87.50
	5	84.25	87.25	87.25	87.25
	6	83.75	86.75	86.75	86.75

The current Pima spot quotations represent prices from local sales, export sales, and offerings last reported on December 17, 2025

Mike

Range	Diff.
26 & Below	-2000
27-29	-1500
30-32	-1000
33-34	-500
35 & Above	0

Strength

(Grams per Tex)	
Range	Diff.
34.9 & Below	-1650
35.0 – 35.9	-1400
36.0 – 36.9	-1150
37.0 – 37.9	-800
38.0 – 38.9	0
39.0 – 39.9	0
40.0 & Above	0

Extraneous Matter

Type - Level	Diff.
Prep - Level 1	-810
Prep - Level 2	-1095
Other - Level 1	-715
Other - Level 2	-1035
Plastic - Level 1	-4000
Plastic - Level 2	-4000

1/ Pima spot quotations for color-leaf-staple combinations not quoted will be included as sales of those qualities which are reported.