



# National Daily Cow and Boneless Beef Summary

Agricultural Marketing Service  
Livestock, Poultry, and Grain Market News

February 23, 2026

## Boneless Processing Beef and Beef Trimmings 100% Lean Items

LM_XB 401	National		Central		LM_XB 405	Loads	Wtd Avg	Change
	Loads	Wtd Avg	Loads	Wtd Avg				
Fresh 92-94%	3.34	455.54	3.3	455.54	Cutter Cow Carcass Cutout		329.13	(2.69)
Fresh 90%	13.0	426.22	0.0	0.00	Inside Rounds - Boxed	4.5	486.32	(2.11)
Fresh 85%	16.2	381.57	6.4	384.35	Outside Rounds	0.0	0.00	0.00
Fresh 81%	0.0	0.00	0.0	0.00	Eye of Rounds	1.4	444.72	5.27
Fresh 65%	6.8	198.89	5.7	199.09	Flats and Eyes - Combo	5.7	473.31	4.84
Fresh 50%	9.8	147.40			Striploins	2.5	586.45	1.32
					S.P.B. - Combo	4.2	489.06	(1.02)

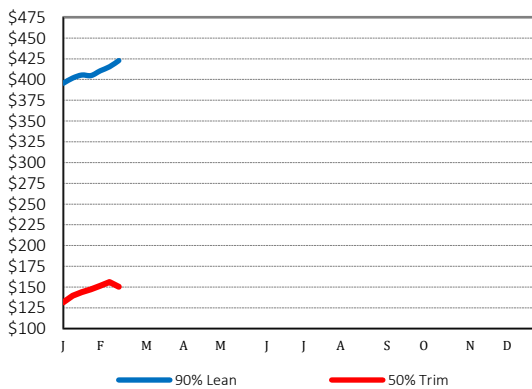
## Ground Beef

LM_XB 403	Loads	Wtd Avg	Steer/Heifer/Cow Ground Beef	
			Loads	Wtd Avg
Fresh 73%	3.1	345.84		
Fresh 81%	6.0	375.07		
Fresh 93%	1.1	528.69	Fresh 81%	0.0
Ground Chuck	0.5	397.42	Fresh 93%	0.00
Ground Round	0.2	435.87	Ground Chuck	
Ground Sirloin				

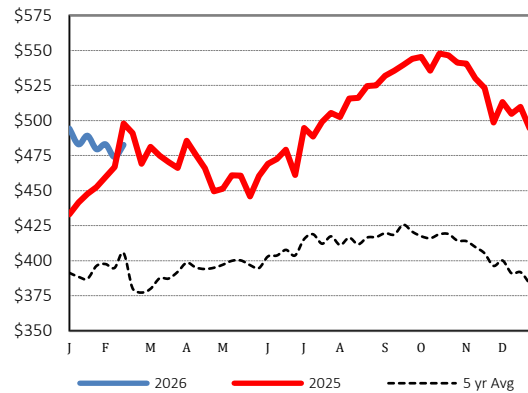
## Daily Estimated Slaughter Daily Cow and Bull Bids

SJ_LS 710			LM_CT 138		
			National	Low	High
Today (est)		106,000	Breaker	259.00	315.00
Week Ago (est)		87,000	Boner	264.00	331.00
Year Ago (act)		96,630	Lean	240.00	336.00
			Bulls	274.00	356.00
Week to Date (est)			-----		
Same Period Last Week (est)		106,000	Northwest	Low	High
Same Period Last Year (act)		87,000	Breaker	272.00	287.00
		96,630	Boner	277.00	302.00
Previous Day Est	Steer and Heifer	-	Lean	240.00	320.00
	Cow and Bull	-	Bulls	274.00	330.00

## 2026 90% Lean vs 50% Lean



## 100% Lean Inside Rounds



Source: USDA Livestock, Poultry, and Grain Market News  
Des Moines, Iowa | 515-284-4460 | dsm.lpgmn@ams.usda.gov

[www.ams.usda.gov/LPSMarketNewsPage](http://www.ams.usda.gov/LPSMarketNewsPage)