



## National Daily Cow and Boneless Beef Summary

Agricultural Marketing Service

Livestock, Poultry, and Grain Market News

February 18, 2026

### Boneless Processing Beef and Beef Trimmings

[LM\\_XB 401](#)

	National		Central	
	Loads	Wtd Avg	Loads	Wtd Avg
Fresh 92-94%	0.00	0.00	0.0	0.00
Fresh 90%	8.0	428.47	7.7	428.49
Fresh 85%	21.2	383.37	18.5	383.98
Fresh 81%	0.0	0.00	0.0	0.00
Fresh 65%	25.5	204.77	25.2	204.92
Fresh 50%	12.0	143.66		

### 100% Lean Items

[LM\\_XB 405](#)

	Loads	Wtd Avg	Change
Cutter Cow Carcass Cutout		330.86	6.74
Inside Rounds - Boxed	3.1	482.97	0.40
Outside Rounds	0.0	0.00	0.00
Eye of Rounds	1.5	443.34	(0.90)
Flats and Eyes - Combc	7.9	467.23	0.74
Striploins	3.2	583.92	0.47
S.P.B. - Combo	3.8	489.33	(5.79)

### Ground Beef

[LM\\_XB 403](#)

	Loads	Wtd Avg
Fresh 73%	1.8	347.66
Fresh 81%	4.6	361.89
Fresh 93%	0.6	529.09
Ground Chuck	0.2	388.81
Ground Round		
Ground Sirloin	0.2	547.37

### Steer/Heifer/Cow Ground Beef

	Loads	Wtd Avg
Fresh 81%	0.0	0.00
Fresh 93%		
Ground Chuck		

### Daily Estimated Slaughter

[SJ\\_LS 710](#)

Today (est)	113,000
Week Ago (est)	116,000
Year Ago (act)	117,812
Week to Date (est)	315,000
Same Period Last Week (est)	339,000
Same Period Last Year (act)	327,837
Previous Day Est	
Steer and Heifer	92,000
Cow and Bull	23,000

### Daily Cow and Bull Bids

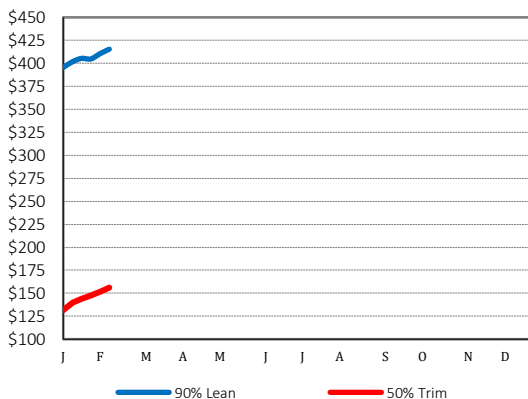
[LM\\_CT 138](#)

National	Low	High
Breaker	259.00	294.00
Boner	264.00	319.00
Lean	234.00	331.00
Bulls	274.00	351.00

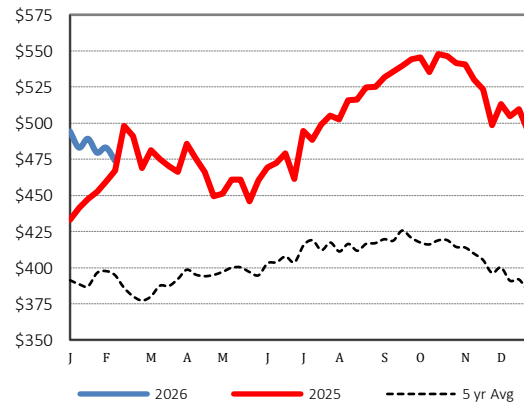
### Northwest

	Low	High
Breaker	272.00	287.00
Boner	277.00	302.00
Lean	234.00	320.00
Bulls	274.00	330.00

### 2026 90% Lean vs 50% Lean



### 100% Lean Inside Rounds



Source: USDA Livestock, Poultry, and Grain Market News

Des Moines, Iowa | 515-284-4460 | [dsm.lpgmn@ams.usda.gov](mailto:dsm.lpgmn@ams.usda.gov)

[www.ams.usda.gov/LPSMarketNewsPage](http://www.ams.usda.gov/LPSMarketNewsPage)