

NATIONAL WEEKLY FEEDER & STOCKER CATTLE SUMMARY

St. Joseph, Missouri

Tuesday, February 17, 2026

USDA LIVESTOCK, POULTRY & GRAIN MARKET NEWS

for w/e Saturday, 02/14/26. Email: stjoe.lpgmn@usda.gov

Receipts:	This Week	Last Week	Year Ago
SJ LS850	322,900	225,500	172,300

Compared to last week, feeders sold steady to 5.00 higher, still some spots of sharply higher money on the right kind and quality, especially on mid to lighter weights suitable for grazing. The market seemed to be a bit calmer this week after Winter Storm Fern blew through and closed markets in a broad section of the country for a week. The supply was heavy as those who were unable to get out because of weather the last couple weeks were able to market cattle this week. Optimism is running very high amongst feeder cattle producers and cattle feeders at the present time. Auction markets continue to host very large feeder cattle auctions as feeder cattle producers are quick to get their cattle consigned and sold as the market returns to around the level before the crash last October. Drier than normal conditions and abnormally warm temps is making for very easy gaining conditions for cattle; they don't have to use the Megacalories for slopping through mud. Very good demand for replacement quality heifers as many ranchers have sold their entire heifer crop the last couple of years and are needing to replace old cows on the ranch. Feedlots held firm on asking prices and sold at higher money on the week on a Friday trade. Southern Plains feedlots sold at record prices on negotiated live transactions. In Kansas cash sales sold 3.00 higher at 248.00 to 249.00, mostly 248.00. In TX/OK/NM, live sales sold 3.00 higher from 246.00 to 248.00, mostly 248.00. Sales in Nebraska were 5.00 higher on a live basis at 245.00 to 246.00, mostly 245.00, while dressed sales were 4.00 higher at 380.00 to 382.00, mostly 382.00. Choice boxed beef closed on Friday at 364.47, 4.86 lower and Select closed at 363.42, 1.11 lower when compared to last week. Weekly Cattle Slaughter under federal inspection estimated at 541K, 5K more than last week and 21K less than a year ago. Auction volume this week included 62 percent weighing over 600 lbs and 40 percent heifers.

REGIONAL WEIGHTED AVERAGE

FEEDER STEER PRICES

NORTH CENTRAL REGION

Steers:	This Week	Last Week	Last Year
600-700 lbs	\$440.58	\$438.60	\$319.05
700-800 lbs	\$398.34	\$395.22	\$292.25
800-900 lbs	\$369.61	\$364.96	\$276.09

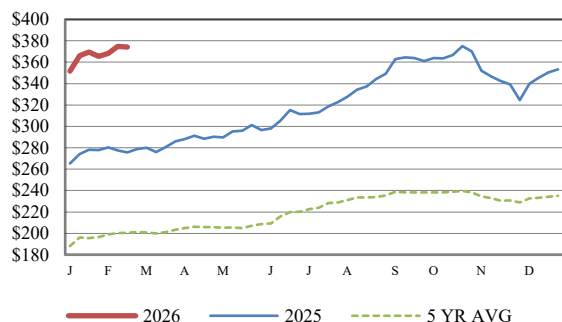
SOUTH CENTRAL REGION

Steers:	This Week	Last Week	Last Year
500-600 lbs	\$483.05	\$482.02	\$334.82
600-700 lbs	\$425.47	\$422.65	\$300.99
700-800 lbs	\$382.93	\$380.00	\$272.68

SOUTHEAST REGION

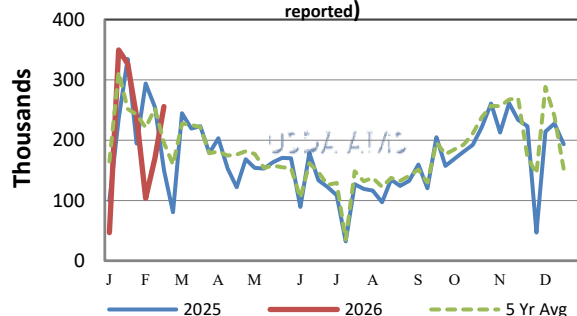
Steers:	This Week	Last Week	Last Year
400-500 lbs	\$509.80	\$507.79	\$334.50
500-600 lbs	\$451.65	\$449.27	\$306.36
600-700 lbs	\$405.12	\$398.90	\$276.64

CME FEEDER CATTLE INDEX (\$/CWT)

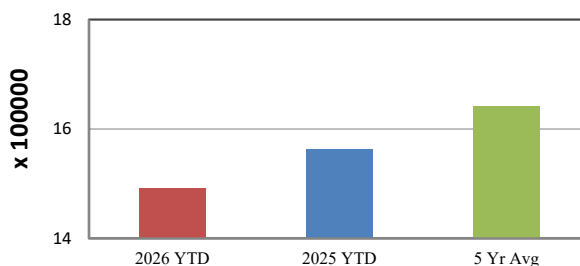


NATIONWIDE REPORTED WEEKLY FEEDER CATTLE AUCTION RECEIPTS

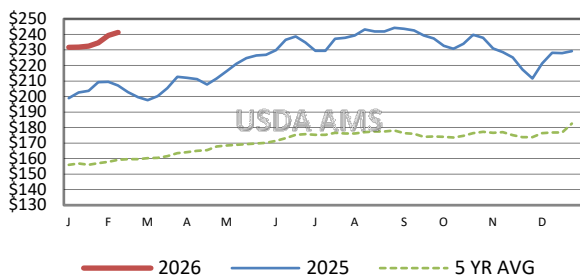
(Receipts vary depending on the number of auctions reported)



YEAR TO DATE AUCTION RECEIPTS



5 AREA WEEKLY WEIGHTED AVERAGE SLTR STEER PRICE (\$/CWT)



USDA Livestock, Poultry, & Grain Market News

St. Joseph, Missouri

Phone: 816-676-7000



For detailed state-by-state feeder cattle quotes:

[National Feeder & Stocker Cattle Summary](http://www.ams.usda.gov/LSMarketNews)

<http://www.ams.usda.gov/LSMarketNews>