

DAILY DIRECT HOGS PLANT DELIVERED as of 1:30 PM

Negotiated Barrow and Gilts:	Carcass Base Price		Live Price	
<u>NATIONAL - AMS 2675/LM HG203:</u>				
Range:	\$82.00	\$86.00	\$56.25	\$67.50
Weighted Average:	\$85.24		\$60.98	
Change from Prior Day:	\$0.02		(-\$4.87)	
Head Count	803		1,484	

IOWA/MINNESOTA - AMS 2675/LM HG206:

Weighted Average:	\$85.43	*
Change from Prior Day:	(-\$0.67)	*

WESTERN CORNBELT - AMS 2675/LM HG212:

Weighted Average:	\$85.43	*
Change from Prior Day:	(-\$0.67)	*

EASTERN CORNBELT - AMS 2675/LM HG210:

Weighted Average:	*	\$65.40
Change from Prior Day:	*	*

*Price not reported due to confidentiality.

NATIONAL DAILY PORK REPORT FOB PLANT- AMS 2498/LM PK602:

Carcass Cutout Values		Chg:	
Primal Loin	96.85		1.69
Primal Butt	91.55		0.78
Primal Picnic	115.41		1.44
Primal Rib	68.89		1.45
Primal Ham	165.40		5.02
Primal Belly	84.78		0.52
Total Loads	140.92		6.57
Pork Cuts	295.24		
Trim/Process Pork	245.20	Lds	
	50.04	Lds	

DAILY HOG SLAUGHTER UNDER FIS - AMS 3208/SJ LS710

Today (est)	461,000
Week Ago (est)	485,000
Year Ago (act)	482,888

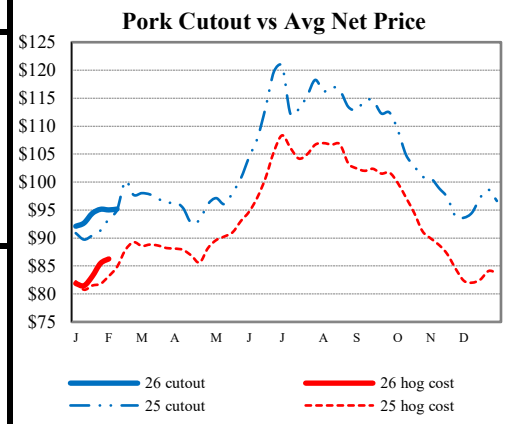
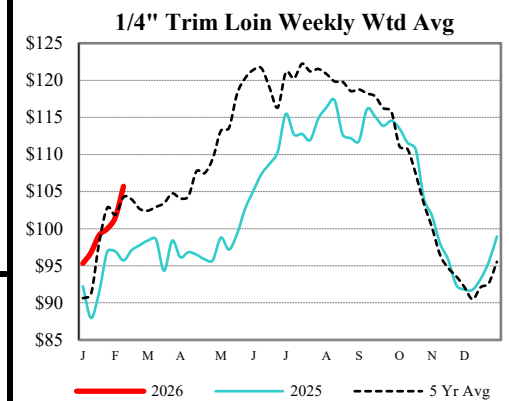
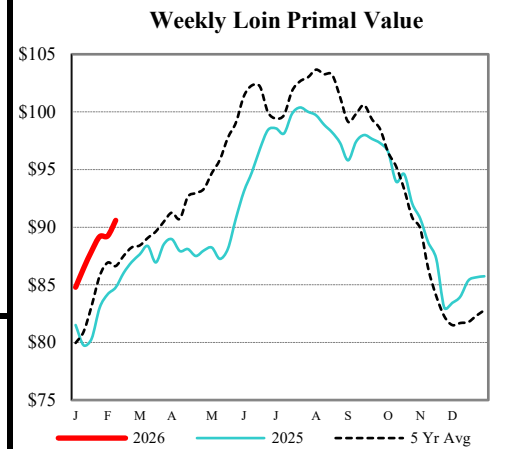
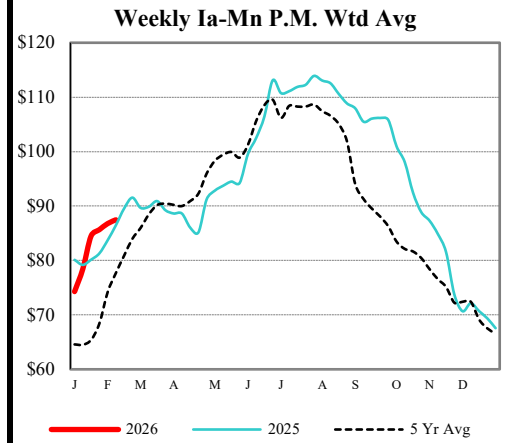
National Daily Direct Hog Prior Day Report - Slaughtered Swine - AMS 2511/LM HG201

Producer Sold:	NEG	OMF	SPMF	OPA	Total
Head Count	5,712	28,959	170,187	100,771	306,488
Carcass Base Price	87.07	83.56	85.63	84.72	85.16
Average Net Price	88.04	86.48	87.19	86.73	86.98

Negotiated Formula included in total *Price not reported due to confidentiality.

ESTIMATED WEEKLY PORK PRODUCTION UNDER FIS - AMS 3209/SJ LS712

Week Ending	Hog Slaughter	Million Pounds	Live Weight	Dressed Weight
02/14/26	2,497,000	547.1	294	219
02/07/26	2,585,000	568.5	295	220
2026 YTD	16,192,000	3557.1		
2025 YTD	16,612,000	3619		



USDA Livestock, Poultry & Grain Market News
 Des Moines, Iowa | PH 515-284-4460
 Email: Desm.LPGMN@usda.gov

<https://mymarketnews.ams.usda.gov/viewReport/2872>

USDA AMS Livestock, Poultry & Grain Market News