



Weekly Cotton Market Review

Agricultural Marketing Service

Cotton and Tobacco Program ♦ Cotton Market News Division ♦ 3275 Appling Road ♦ Memphis, TN 38133 ♦ 901.384.3016

Mp_cn812

Vol. 107 No. 27
February 6, 2026

Inside this Issue

Market Overview

Spot Quotations

ICE Futures

Southeastern

Textile Mill Report

South Central

Southwestern

Western

Pima Quotations

Featured

Staple Distribution

[Cotton Market Reports](#)

[Subscribe to this report](#)

[Subscribe to all
Cotton Market reports](#)

Spot quotations averaged 104 points lower than the previous week, according to the USDA, Agricultural Marketing Services Cotton and Tobacco Program. Quotations for the base quality of cotton (color 41, leaf 4, staple 34, mike 35-36 and 43-49, strength 27.0-28.9, and uniformity 81.0-81.9) in the seven designated markets, averaged 58.96 cents per pound for the week ending Thursday, February 5, 2026. The weekly average was down from 60.00 cents last week and from 62.29 cents reported in the corresponding period a year ago. Daily average quotations ranged from a high of 59.63 cents on Friday, January 30 to a low of 58.40 cents on Thursday, February 5. Spot transactions reported in the Daily Spot Cotton Quotations for the week ended February 5 totaled 49,607 bales. This is compared to 59,025 reported last week and 26,598 bales reported the corresponding week a year ago. Total spot transactions for the season were 995,846 bales compared to 639,860 the corresponding week a year ago. The ICE March settlement price ended the week at 61.76 cents, compared to 63.48 cents last week.

41-4-34 Prices								
Date	SE	ND	SD	ETX-STX	WTX-KS-OK	DSW	SJV	7-MKT AVG
Jan 30	61.67	60.92	60.92	57.42	59.42	58.42	58.67	59.63
Feb 2	61.17	60.42	60.42	56.92	58.92	57.92	58.17	59.13
Feb 3	60.81	60.06	60.06	56.56	58.56	57.56	57.81	58.77
Feb 4	60.99	60.24	60.24	56.74	58.74	57.49	57.74	58.88
Feb 5	60.51	59.76	59.76	56.26	58.26	57.01	57.26	58.40
31-3-36 Prices								
Date	SE	ND	SD	ETX-STX	WTX-KS-OK	DSW	SJV	7-MKT AVG
Jan 30	67.42	65.67	65.17	64.17	63.67	64.42	71.07	65.94
Feb 2	66.92	65.17	64.67	63.67	63.17	63.92	70.57	65.44
Feb 3	66.56	64.81	64.31	63.31	62.81	63.56	70.21	65.08
Feb 4	66.74	64.99	64.49	63.49	62.99	63.49	70.14	65.19
Feb 5	66.26	64.51	64.01	63.01	62.51	63.01	69.66	64.71
Futures Settlement								Far Eastern A Index 1/
Date	Mar-26	May-26	Jul-26	Oct-26	Dec-26	Mar-27	Current	
Jan 30	63.17	64.93	66.55	67.99	68.75	69.44	73.95	
Feb 2	62.67	64.40	66.10	67.66	68.40	69.21	73.80	
Feb 3	62.31	64.11	65.80	67.49	68.28	69.16	73.35	
Feb 4	62.24	63.99	65.72	67.35	68.24	69.16	73.15	
Feb 5	61.76	63.50	65.26	67.17	68.00	68.99	73.20	
Spot Transactions								
Date	SE	ND	SD	ETX-STX	WTX-KS-OK	DSW	SJV	PIMA
Jan 30	0	0	0	0	8,512	0	0	0
Feb 2	0	0	0	0	4,472	0	0	0
Feb 3	363	0	0	0	10,055	0	0	0
Feb 4	0	4,404	0	1,826	14,119	0	0	0
Feb 5	1,090	0	0	0	4,766	0	0	0
Weekly Totals	1,453	4,404	0	1,826	41,924	0	0	0

Source: USDA, AMS, Cotton and Tobacco Program, 1/ Cotlook

Southeastern Markets Regional Summary

Danny Pino ♦ Macon, GA ♦ 478.752.3560 ♦ Danny.Pino@usda.gov

Spot cotton trading was slow. Supplies were moderate. Demand was good. Producer offerings were moderate. Average local spot prices were lower. Trading of CCC-loan equities was inactive.

A cold front moved across the lower Southeast during the period, plummeting temperatures and bringing intermittent snow flurries, sunshine, and light rainfall late in the week. Daytime high temperatures in the 50s and 60s dipped into the 30s and 40s as breezy blasts of Arctic air were received throughout the region. Nighttime lows were in the 20s and 30s. Sunny and warmer conditions were in the forecast for the near term. Weekly accumulated precipitation totals measured from trace amounts to around three-quarters of an inch of moisture in portions of central and south Alabama, the Florida Panhandle, and areas of central and southwest Georgia. Droughty conditions deteriorated in areas of the Gulf coast and south Georgia that missed significant precipitation, according to the U.S. Drought Monitor. Ginning rapidly neared completion; a few gins remained on gin days as they waited for the last remaining modules to arrive on gin yards.

Across the upper Southeast, light snow flurries were received in the beginning of the period. An Arctic cold front moved across the region later in the week bringing seasonably cold and windy conditions along with scattered precipitation. Daytime high

temperatures varied from the 30s to 50s. Nighttime lows were in the teens to 40s. Weekly accumulated precipitation totals measured from one-half of an inch to one inch of moisture along the eastern Carolinas and Virginia. The combination of frozen precipitation and cooler temperatures limited the immediate hydrologic benefits, leaving moisture deficits unchanged, according to the U.S. Drought Monitor. Ginning rapidly neared completion; a few gins remained on gin days as they waited for the last modules to arrive from fields.

Textile Mill

Domestic mill buyers inquired for a moderate volume of color 41, leaf 4, and staple 35 and 36 for February through October delivery. No sales and no additional inquiries were reported. Finished product demand was reported as steady at larger mills who operated at capacity and intermittent at smaller mills. The undertone from mill buyers remained cautious.

Demand through export channels was moderate. Taiwanese mill buyers inquired for a moderate volume of color 31 and 41, leaf 3 and 4, and staple 35 and 36 for prompt shipment. Agents for mills in Nicaragua inquired for a moderate volume of color 31, leaf 3, and staple 37 for September through November shipment. No sales were reported.

Trading

- A heavy volume of color mostly 21 and 31, leaf 2-4, staple 36-38, mike 37-49, strength 80-82, and uniformity 80-83 sold for around 68.00 cents per pound, FOB car/truck (Rule 5, compression charges paid).
- A heavy volume of color 31 and 41 leaf 2 and 3, staple 35 and longer, mike 50-52, strength 29-32, and uniformity 80-83 sold for around 62.50 cents per pound, FOB car/truck, Georgia terms (Rule 5, compression charges paid, 30 days free storage).

South Central Markets Regional Summary

Aerielle McDaniel ♦ Memphis, TN ♦ 901.384.3016 ♦ Aerielle.McDaniel@usda.gov

North Delta

Trading of spot cotton was inactive. Trading of CCC-loan equities was slow. Supplies and producer offerings were light. Demand was very light. Average local spot prices were lower. Forward contracting activity is estimated to be very limited.

Partly cloudy skies prevailed during most of the reporting period. Daytime temperatures were in the low 20s. Abundant sunshine warmed temperature highs into the 50s, which helped melt accumulated ice in cotton growing areas. Overnight lows were below freezing and slowly rose into the mid-30s. Precipitation totals measured from trace amounts to around one-quarter of an inch of rain. Although there was no damage reported from the storm, shipment activities were slowed due to hazardous road conditions from inclement weather. Fieldwork is expected to resume mid-February. Drought intensity improved tremendously throughout the territory as winter storms left fields drenched. Shipments of raw cotton continued. Two gins remained in operation and are expected to finish by the end of February. Virtual and in-person industry meetings were being planned and attended.

South Delta

Spot cotton trading was inactive. Supplies of available cotton were light. Demand was very light. Average local spot prices were lower. Trading of CCC-loan equities were inactive. No forward contracting was reported. Local experts reported a sudden increase in market activities during the period.

Sunny skies dominated the region most of the period, warming daytime temperatures from the low 20s into the low 50s. Overnight lows ranged from the teens into the 40s. Precipitation totals measured from trace amounts to around one-half of an inch. Elevated temperatures helped melt heavily coated, icy fields, which penetrated soil with beneficial moisture. No fieldwork was reported. Although growers sheltered and stored farming equipment ahead of the storm, damage was still reported to some equipment. In areas within Mississippi, many residences remained without power for several days. Dangerous road conditions caused shipment backlogs, but overall, conditions have improved from the previous reporting period. Local experts estimated a decrease in acreage for the upcoming season. Virtual and in-person industry meetings were being planned and attended.

Trading

North Delta

- A moderate volume of CCC-loan equities traded for around 10.00 cents per pound.

South Delta

- No trading activity was reported.

Southwestern Markets Regional Summary

Bethany Lindgren ♦ Memphis, TN ♦ 901.384.3016 ♦ Bethany.Lindgren@usda.gov

Jane Byers-Angle ♦ Lubbock, TX ♦ 806.283.9389 ♦ Jane.Byers-Angle@usda.gov

East Texas-South Texas

Spot cotton trading was slow. Supplies and producer offerings were light. Demand was light. Average local spot prices were lower. No forward contracting was reported. Trading of CCC-loan equities was inactive. Foreign mill inquiries were moderate. Interest was best from Bangladesh, Taiwan, and Vietnam.

In East Texas, sunshine and dry weather returned to the region. Daytime high temperatures climbed into the 70s from the upper 30s early in the period, nighttime temperatures fluctuated from the 30s into the 50s. No rainfall was reported. Growers considered all contributing factors when making decisions for planting in the upcoming season. Sunny and breezy conditions were observed in the South Texas territory this week. Daytime temperatures ranged from the 50s to 70s, with nighttime temperatures swinging from the 30s to 50s. Light showers mid-week produced rainfall totals ranging from trace amounts up to nearly one-quarter of an inch of moisture. Drought and deteriorating soil conditions continue to intensify and be a growing concern for producers as planting decisions are made. Timely, slow-soaking rainfall would be beneficial to revitalize parched fields and provide optimal conditions for planting. According to the US Drought Monitor, drought intensity in areas of the Upper Coast, Coastal Bend, and lower Rio Grande Valley ranged from areas of moderate drought to extreme drought. Fieldwork continued and producers prepared equipment for planting. Agricultural industry meetings were being planned and attended.

West Texas-Kansas-Oklahoma

Spot cotton trading was active. Supplies were heavy. Producer offerings were moderate. Demand was moderate. Average local spot prices were lower. Producer interest in forward contracting was light. Trading of CCC-loan equities was moderate. Foreign mill inquiries were moderate. Interest was best from Bangladesh, Taiwan, and Vietnam.

Daytime highs across Texas were in the low 40s to upper 60s, with overnight lows in the teens to 40s. A few weak cool fronts moved through, but the period ended with mostly above-average temperatures. Slow snowmelt from Winter Storm Fern provided the first meaningful moisture since September, helping soften and recharge soils, though fields remained too wet for fieldwork. The moisture supported cover-crop growth, but additional pre-plant rainfall will be needed ahead of the next planting season. Most gins finished seasonal bale pressing, with a few expected to continue into March as ginning wrapped up.

Daytime temperatures across Kansas initially hovered in the 20s before rebounding into the low 60s following the passage of a blustery winter storm. Overnight lows fell into the single digits prior to moderating into the mid-30s. Fields were muddy. Ginning operations remained active, while pressing services approached completion at several locations. Modules were staged on gin yards. In Oklahoma, daytime highs ranged from the mid-30s to mid-60s, with overnight lows in the teens to 20s. After the early period winter storm exited the region, conditions shifted to intermittent clouds and sunshine and remained dry. Ginning was finished at some gins, while others continued. Industry members referenced the Risk Management Agency's price discovery tool that tracks projected insurance rates during the price discovery periods. The link is: [RMA Price Discovery - Your Price](#).

Southwestern Markets Regional Summary

Bethany Lindgren ♦ Memphis, TN ♦ 901.384.3016 ♦ Bethany.Lindgren@usda.gov

Jane Byers-Angle ♦ Lubbock, TX ♦ 806.698.4648 ♦ Jane.Byers-Angle@usda.gov

Trading

East Texas/South Texas

- A heavy volume of mostly color 41 and better, leaf 3 and 4, staple 37-39, mike averaging 43.4, strength averaging 30.8, and uniformity averaging 82.2 sold for 61.00 cents per pound, FOB warehouse (compression charges not paid).

West Texas, Kansas, & Oklahoma

- In Texas, lots containing a heavy volume of mostly color 11, 21, and 12, leaf 3 and better, staple 35-37, mike 34-48, strength 28-33, and uniformity 79-83 sold for 61.25 to 62.25 cents per pound, FOB car/truck, (compression charges not paid).
- Mixed lots containing a heavy volume of color 43 and better, leaf 6 and better, staple 32-39, mike 27-52, strength 29-35, and uniformity 77-83 traded for 53.00 to 54.00 cents, same terms as above.
- In Kansas, a mixed lot containing a moderate volume of color 21-32, leaf 3-5, staple 34-38, mike 36-51, strength 28-34, and uniformity 79-83 sold for around 58.50 cents, same terms as above.
- In Oklahoma, lots containing a heavy volume of color 21-31, leaf 2-4, staple 36-40, mike 37-46, strength 31-34, and uniformity 80-83 traded for 62.50 to 63.75 cents, same terms as above.
- Mixed lots containing a moderate volume of color 21-42, leaf 2-5, staple 33-38, mike 33-46, strength 28-33, and uniformity 77-81 sold for 56.25 to 58.50 cents, same terms as above.
- A moderate volume of CCC-loan equities sold for 9.25 to 10.50 cents.

Western Markets Regional Summary

Veronica Williamson ♦ Florence, SC ♦ 843.667.4381 ♦ Veronica.Williamson@usda.gov

Desert Southwest (DSW)

Spot cotton trading was inactive. Supplies and producer offerings were light. Demand was light. Producer interest in forward contracting was light. Average local prices were lower. No forward contracting or domestic mill activity was reported. Foreign mill inquiries were light.

Clear and sunny skies prevailed in Arizona during the period, allowing daytime high temperatures to rise well above average. Temperatures reached the low-to-mid 80s in central Arizona, breaking record highs multiple days during the reporting period. Nighttime lows were in the 40s and 50s. No rain was recorded. Ginning continued uninterrupted. The Arizona snowpack water equivalent was reported as well below average for this time of year. There are concerns of a shortage in water supply going into next crop year. According to the U.S. Drought Monitor, the state of Arizona is 21 percent abnormally dry, with 2 percent showing moderate drought conditions. Temperatures in New Mexico and El Paso, TX were average to slightly above average, with daytime highs in the 60s and 70s and nightly lows in the 20s and 30s. No rain was recorded in the period. Ginning continued.

San Joaquin Valley (SJV)

Spot cotton trading was inactive. Supplies and demand were light. No forward contracting or domestic mill activity was reported. Average local prices were lower. Foreign mill inquiries were light.

In the SJV, daily temperatures were above average with highs in the 60s and 70s, but no records were broken. Overnight lows were in the 40s. Dense fog advisories were issued during the period. No rain was recorded. Additional moisture in the coming months would be beneficial to increase reservoir levels. State water officials reported the California Sierra Nevada

snowpack had dwindled to just 59 percent of normal, a sharp drop from 89 percent a few weeks ago. This is mainly due to an unusually dry and warm January. Industry members prepared to attend the World Ag Expo in Tulare County February 10-13. Producers discussed planting intentions for the upcoming season.

American Pima (AP)

Spot cotton trading was inactive. Supplies were moderate. Demand was light. No forward contracting or domestic mill activity was reported. Average local spot prices were steady. Foreign mill inquiries were light. Interest was best from India and China.

In the San Joaquin Valley, warmer temperatures were prevalent with dense fog advisories being issued during the report period. Daytime highs reached into the 70s, with nightly lows in the 40s. No rainfall occurred. State water officials reported the California Sierra Nevada snowpack had dwindled to just 59 percent of normal, a sharp drop from 89 percent a few weeks ago. This is mainly due to an unusually dry and warm January. Ginning continued. Industry members prepared to attend the World Ag Expo in Tulare County February 10-13. Producers discussed planting intentions for the upcoming season.

In Arizona, and El Paso, TX, temperatures were above average under partly cloudy skies. Temperatures reached the low-to-mid 80s in central Arizona, breaking record highs multiple days during the report period. No rain was recorded. The Arizona snowpack water equivalent was reported as well below average for this time of year. There are concerns of a shortage in water supply going into next crop year. According to the U.S. Drought Monitor, the state of Arizona is 21 percent abnormally dry, with 2 percent showing moderate drought conditions.

Trading

Desert Southwest

San Joaquin Valley

American Pima

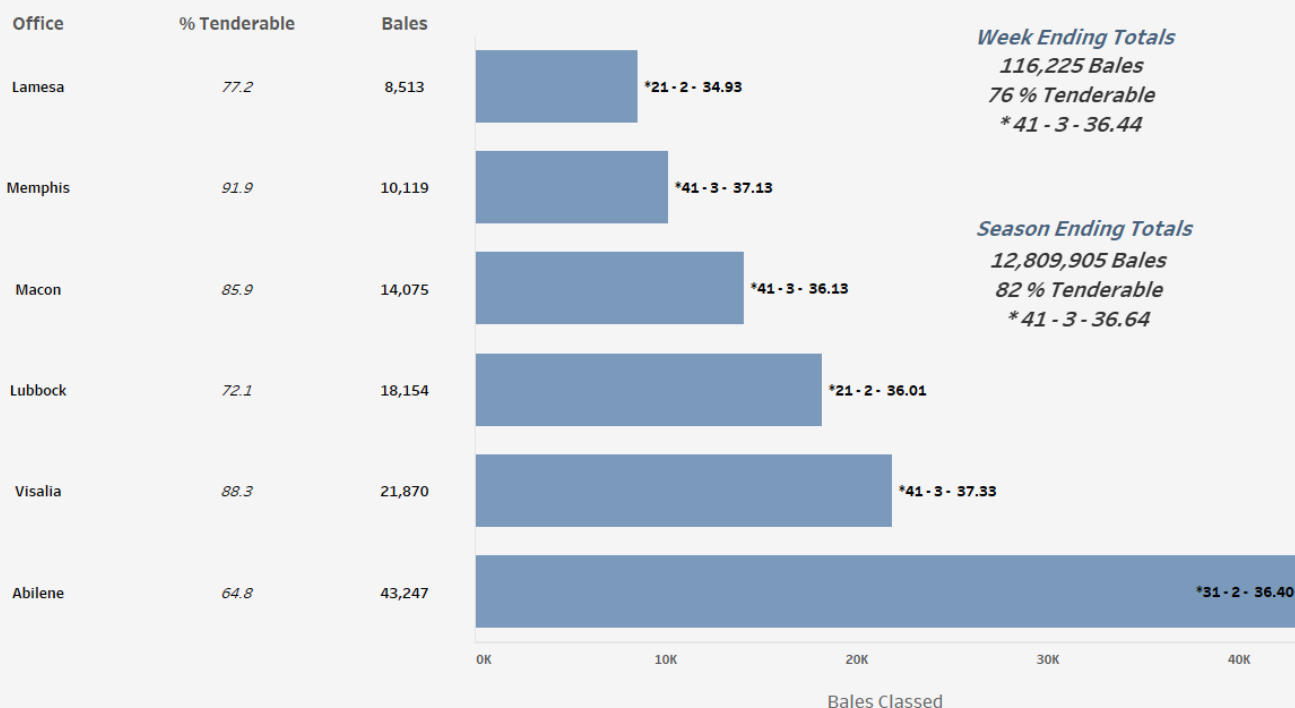
- No trading activity was reported.
- No trading activity was reported.
- No trading activity was reported.

Cotton Bales Classed by Office

For the week ending February 5, 116,225 bales were classed. All offices were classing cotton, except Dumas and Corpus Christi. Data for Florence and Rayville was withheld to avoid disclosure of data from an individual gin or less than 500 bales classed. Quality data across all offices for the week was 30.2 percent for color 41, 32.6 percent for leaf 3, staple averaging 36.44, mike averaging 4.14, strength averaging 30.90, and uniformity averaging 81.11. For the entire U.S. upland crop, total classed during the season was 12,809,905 bales.

Bales of Upland Cotton Classed by Office, Week Ending Feb. 5, 2026

* Predominate Color - Predominate Leaf - Avg. Staple



USDA, AMS, Cotton and Tobacco Program, Market News, *Data Source: USDA Cotton Quality Data*

[For complete report click here.](#)

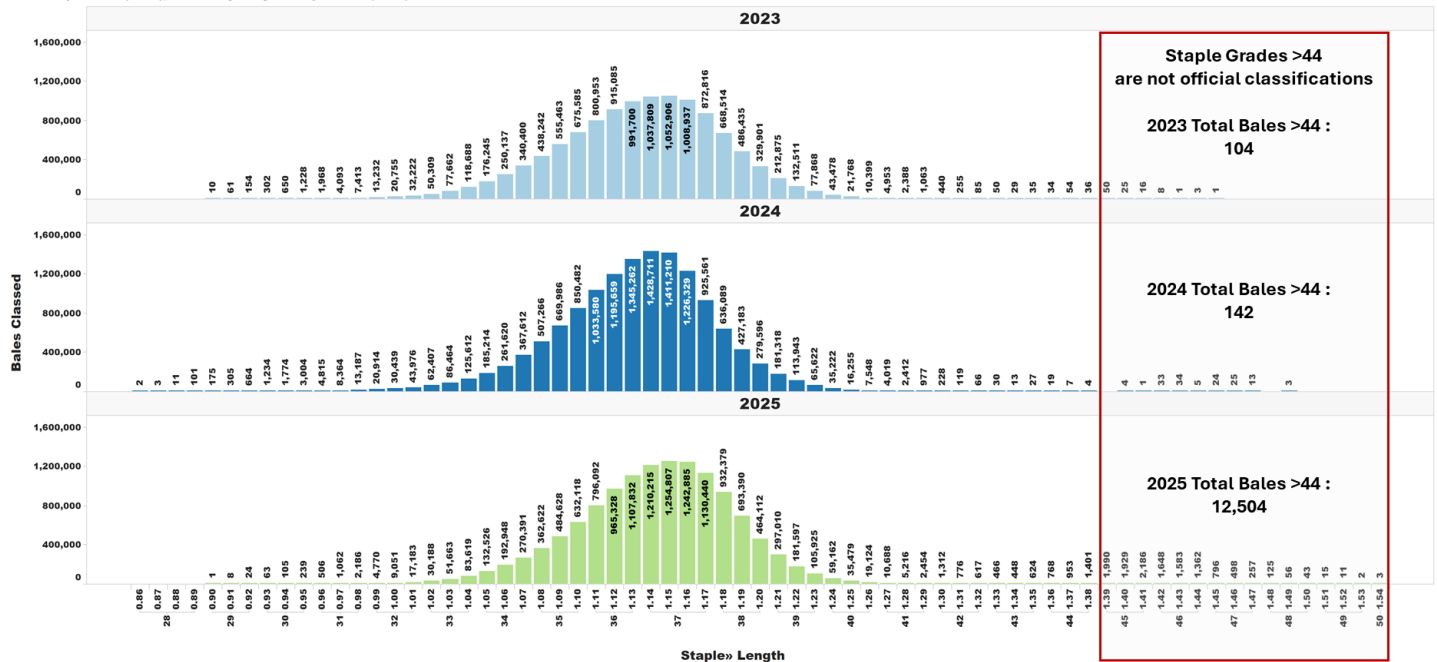
U.S. Upland Cotton Crop Staple Distribution

The official staple lengths for U.S. Upland Cotton, measured in 32nds of an inch, range from "24" to "44 & +". Currently, the longest staple included in the AMS Cotton Market News' weekly quality reports is the "40 & +" designation. Market News is in the process of updating its weekly reports to include all official staple length designations.

For more detailed information, AMS Cotton Market News posts daily per-bale quality data, which includes the instrument measurement for length in inches. You can find this data by office (<https://mymarketnews.ams.usda.gov/viewReport/3471>)

Staple Distribution of U.S. Upland Cotton: 2023-2025 Crops (Classed through Feb. 5, 2025)

Official Staple Grade (28-44), Unofficially Assigned Staple Grade (45-48)



Number of Bales in Certificated Stocks

Delivery Points	Stocks as of 2-05-2026	Awaiting Review	Non-Rain Grown Cotton
Dallas/FT. Worth, TX	57,920	0	0
Galveston, TX	10,121	0	0
Greenville, SC	0	0	0
Houston, TX	5,144	0	0
Memphis, TN	1,812	0	0
Total	74,997	0	0

World market prices for upland cotton, in cents per pound, in effect from 12:01 a.m., EDT, Friday through midnight, EDT, Thursday

Description	2025-2026					
	Jan	Jan	Jan	Jan	Jan 30	Feb
	02-08	09-15	16-22	23-29	Feb 05	06-12
Adjusted world price 1/	50.76	50.97	51.17	50.99	50.23	49.78
Course count adjustment	0.00	0.00	0.00	0.00	0.00	0.00
Loan Deficiency Payment (LDP)	1.24	1.03	0.83	1.01	1.77	2.22
Fine count adjustment 2024	0.00	0.00	0.00	0.00	0.00	0.00
Fine count adjustment 2025	0.00	0.00	0.00	0.00	0.00	0.00

1/ Color 41, leaf 4, staple 34, mike 35-36 & 43-49, strength readings of 26.0-28.9 grams per tex, length uniformity of 80.0-81.9 percent.

Source: Farm Service Agency, USDA.

Description	2024-2025				2025-2026	
	Through January 30, 2025		Through January 29, 2026			
	Week	Mkt. Year	Week	Mkt. Year		
Outstanding sales	-	5,204,800	-	3,980,700		
Exports	221,100	3,681,400	235,300	3,822,600		
Total export commitments	-	8,886,200	-	7,803,300		
New sales	191,400	-	267,900	-		
Buy-backs and cancellations	2,500	-	18,100	-		
Net sales	188,900	-	249,800	-		
Sales next marketing year	14,900	607,900	114,900	663,000		

Net sales of Upland totaling 249,800 RB for 2025/2026 were up 23 percent from the previous week, but down 5 percent from the prior 4-week average. Increases primarily for Vietnam (54,000 RB, including 600 RB switched from South Korea), Pakistan (48,100 RB, including decreases of 2,200 RB), China (36,600 RB), Turkey (32,800 RB), and Bangladesh (31,800 RB), were offset by reductions for South Korea (1,100 RB). Net sales of 114,900 RB for 2026/2027 were primarily for Malaysia (52,800 RB), Indonesia (33,400 RB), Mexico (8,800 RB), Nicaragua (8,800 RB), and Turkey (6,600 RB). Exports of 235,300 RB were down 9 percent from the previous week, but up 25 percent from the prior 4-week average. The destinations were primarily to Vietnam (84,300 RB), Pakistan (29,100 RB), Bangladesh (19,500 RB), Turkey (17,600 RB), and China (16,000 RB). Net sales of Pima totaling 3,200 RB for 2025/2026 were down 87 percent from the previous week and 79 percent from the prior 4-week average. Increases primarily for Costa Rica (1,300 RB), Djibouti (1,300 RB), Thailand (400 RB), Bangladesh (300 RB), and India (100 RB, including decreases of 1,800 RB), were offset by reductions for Italy (400 RB). Exports of 2,300 RB--a marketing-year low--were down 48 percent from the previous week and 68 percent from the prior 4-week average. The destinations were primarily to China (1,500 RB), Colombia (300 RB), Thailand (300 RB), and India (200 RB).

Exports for Own Account: For 2025/2026, the current exports for own account outstanding balance of 41,700 RB were to India (30,100 RB), Bangladesh (4,400 RB), Vietnam (3,200 RB), Pakistan (2,300 RB), and Turkey (1,700 RB).

Source: Export Sales Reporting Division, Foreign Agricultural Service, USDA.

February 5, 2026

NOTE: Data may not add due to rounding.

American Pima Spot Quotations

American Pima quotations are for cotton equal to the Official Standards, net weight, in mixed lots, UD Free, FOB warehouse. 1/

AMERICAN PIMA SPOT QUOTATIONS

Color	Leaf	Staple			
		44	46	48	50
1	1	142.75	148.50	150.25	150.25
	2	142.50	148.25	150.00	150.00
	3	135.75	143.50	144.50	144.50
	4				
	5				
	6				
2	1	142.50	148.25	150.00	150.00
	2	142.25	148.00	149.75	149.75
	3	135.50	143.25	144.25	144.25
	4	125.50	133.75	134.75	134.75
	5				
	6				
3	1	134.25	142.00	143.00	143.00
	2	131.75	139.50	140.50	140.50
	3	129.50	137.25	138.25	138.25
	4	120.50	128.25	129.25	129.25
	5	104.50	111.75	112.75	112.75
	6				
4	1	115.50	123.25	125.00	125.00
	2	115.25	123.00	124.25	124.25
	3	114.00	121.75	122.75	122.75
	4	109.00	116.75	117.75	117.75
	5	97.75	105.50	106.50	106.50
	6				
5	1				
	2	92.25	102.25	102.25	102.25
	3	92.25	101.75	102.00	102.00
	4	92.25	96.25	96.25	96.25
	5	92.00	96.00	96.00	96.00
	6				
6	1				
	2	84.50	87.50	87.50	87.50
	3	84.50	87.50	87.50	87.50
	4	84.50	87.50	87.50	87.50
	5	84.25	87.25	87.25	87.25
	6	83.75	86.75	86.75	86.75

The current Pima spot quotations represent prices from local sales, export sales, and offerings last reported on December 17, 2025

Mike

Range	Diff.
26 & Below	-2000
27-29	-1500
30-32	-1000
33-34	-500
35 & Above	0

Strength

<i>(Grams per Tex)</i>	
Range	Diff.
34.9 & Below	-1650
35.0 – 35.9	-1400
36.0 – 36.9	-1150
37.0 – 37.9	-800
38.0 – 38.9	0
39.0 – 39.9	0
40.0 & Above	0

Extraneous Matter

Type - Level	Diff.
Prep - Level 1	-810
Prep - Level 2	-1095
Other - Level 1	-715
Other - Level 2	-1035
Plastic - Level 1	-4000
Plastic - Level 2	-4000

1/ Pima spot quotations for color-leaf-staple combinations not quoted will be included as sales of those qualities which are reported.