



## National Daily Cow and Boneless Beef Summary

Agricultural Marketing Service

Livestock, Poultry, and Grain Market News

February 2, 2026

### Boneless Processing Beef and Beef Trimmings

### 100% Lean Items

[LM\\_XB 401](#)

National

Central

	Loads	Wtd Avg	Loads	Wtd Avg
Fresh 92-94%	0.00	0.00	0.0	0.00
Fresh 90%	20.8	414.58	8.7	420.95
Fresh 85%	13.9	368.94	2.6	374.53
Fresh 81%	0.0	0.00	0.0	0.00
Fresh 65%	5.3	202.66	5.3	202.66
Fresh 50%	7.1	154.19		

[LM\\_XB 405](#)

	Loads	Wtd Avg	Change
Cutter Cow Carcass Cutout		323.11	1.60
Inside Rounds - Boxed	2.4	459.17	(1.81)
Outside Rounds	0.0	0.00	0.00
Eye of Rounds	2.8	448.26	(2.25)
Flats and Eyes - Combc	8.5	462.58	12.08
Striploins	2.6	575.73	(1.36)
S.P.B. - Combo	3.3	499.49	0.43

### Ground Beef

[LM\\_XB 403](#)

	Loads	Wtd Avg
Fresh 73%	0.8	368.51
Fresh 81%	2.8	392.67
Fresh 93%	0.6	530.27
Ground Chuck	1.3	406.91
Ground Round	0.0	438.67
Ground Sirloin		

### Steer/Heifer/Cow Ground Beef

	Loads	Wtd Avg
Fresh 81%	0.0	0.00
Fresh 93%		
Ground Chuck		

### Daily Estimated Slaughter

[SJ\\_LS 710](#)

Today (est)	108,000
Week Ago (est)	100,000
Year Ago (act)	113,428
Week to Date (est)	108,000
Same Period Last Week (est)	100,000
Same Period Last Year (act)	113,428
Previous Day Est	Steer and Heifer 70,000
	Cow and Bull 20,000

### Daily Cow and Bull Bids

[LM\\_CT 138](#)

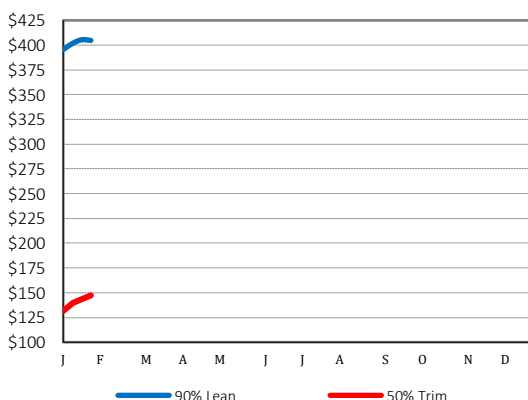
National

	Low	High
Breaker	254.00	315.00
Boner	243.00	318.00
Lean	235.00	320.00
Bulls	265.00	345.00

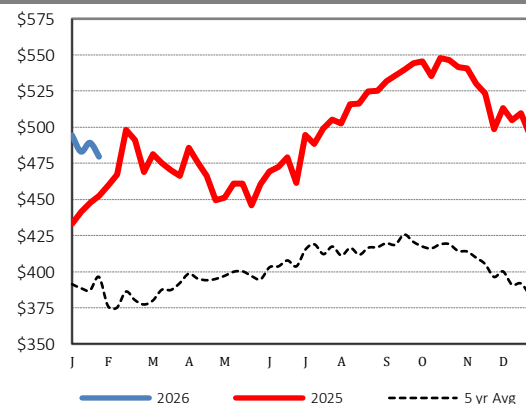
Northwest

	Low	High
Breaker	266.00	280.00
Boner	275.00	300.00
Lean	235.00	310.00
Bulls	269.00	325.00

### 2026 90% Lean vs 50% Lean



### 100% Lean Inside Rounds



Source: USDA Livestock, Poultry, and Grain Market News

Des Moines, Iowa | 515-284-4460 | [dsm.lpgmn@ams.usda.gov](mailto:dsm.lpgmn@ams.usda.gov)

[www.ams.usda.gov/LPSMarketNewsPage](http://www.ams.usda.gov/LPSMarketNewsPage)