



National Daily Cow and Boneless Beef Summary

Agricultural Marketing Service

Livestock, Poultry, and Grain Market News

January 30, 2026

Boneless Processing Beef and Beef Trimmings

100% Lean Items

[LM_XB 401](#)

National

Central

[LM_XB 405](#)

	Loads	Wtd Avg	Loads	Wtd Avg
Fresh 92-94%	6.63	434.35	6.6	434.35
Fresh 90%	0.0	0.00	0.0	0.00
Fresh 85%	9.7	370.48	9.1	370.77
Fresh 81%	4.0	355.02	4.0	355.02
Fresh 65%	0.0	0.00	0.0	0.00
Fresh 50%	5.1	152.13		

	Loads	Wtd Avg	Change
Cutter Cow Carcass Cutout		321.51	-.11
Inside Rounds - Boxed	2.0	460.98	(4.88)
Outside Rounds	0.3	464.97	0.00
Eye of Rounds	2.4	450.51	(7.85)
Flats and Eyes - Combc	5.3	450.50	(6.49)
Striploins	3.4	577.09	(1.11)
S.P.B. - Combo	3.3	499.06	4.33

Ground Beef

[LM_XB 403](#)

Loads

Wtd Avg

Steer/Heifer/Cow Ground Beef

Fresh 73%	0.8	355.34
Fresh 81%	8.0	353.40
Fresh 93%	0.8	540.73
Ground Chuck	2.2	404.58
Ground Round		
Ground Sirloin		

Loads

Wtd Avg

Fresh 81%	0.0	0.00
Fresh 93%		
Ground Chuck		

Daily Estimated Slaughter

[SJ_LS 710](#)

Today (est)	93,000
Week Ago (est)	84,000
Year Ago (act)	115,502
Week to Date (est)	529,000
Same Period Last Week (est)	531,000
Same Period Last Year (act)	598,645
Previous Day Est	Steer and Heifer 91,000
	Cow and Bull 21,000

Daily Cow and Bull Bids

[LM_CT 138](#)

National

Low

High

Breaker	245.00	318.00
Boner	243.00	314.00
Lean	234.00	325.00
Bulls	275.00	345.00

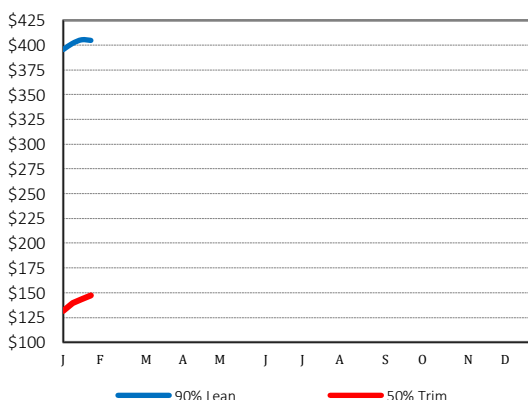
Northwest

Low

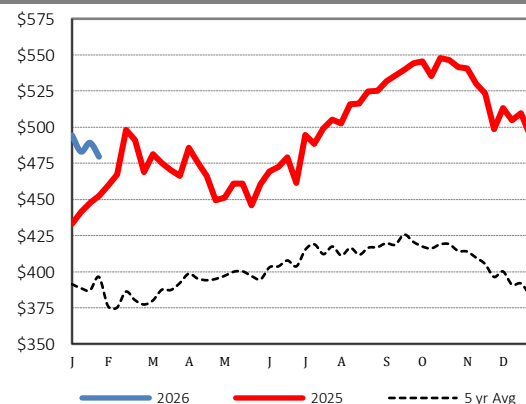
High

Breaker	245.00	280.00
Boner	275.00	300.00
Lean	234.00	310.00
Bulls	292.00	325.00

2026 90% Lean vs 50% Lean



100% Lean Inside Rounds



Source: USDA Livestock, Poultry, and Grain Market News

Des Moines, Iowa | 515-284-4460 | dsm.lpgmn@ams.usda.gov

www.ams.usda.gov/LPSMarketNewsPage