



Weekly Cotton Market Review

Agricultural Marketing Service

Cotton and Tobacco Program ♦ Cotton Market News Division ♦ 3275 Appling Road ♦ Memphis, TN 38133 ♦ 901.384.3016

Mp_cn812

Vol. 107 No. 25
January 23, 2026

Inside this Issue

Market Overview

Spot Quotations

ICE Futures

Southeastern

Textile Mill Report

South Central

Southwestern

Western

Cotton Ginnings

Pima Quotations

Featured

Staple Distribution

[Cotton Market Reports](#)

[Subscribe to this report](#)

[Subscribe to all
Cotton Market reports](#)

Spot quotations averaged 81 points lower than the previous week, according to the USDA, Agricultural Marketing Services Cotton and Tobacco Program. Quotations for the base quality of cotton (color 41, leaf 4, staple 34, mike 35-36 and 43-49, strength 27.0-28.9, and uniformity 81.0-81.9) in the seven designated markets averaged 60.27 cents per pound for the week ending Thursday, January 22, 2026. The weekly average was down from 61.08 cents last week, and 63.38 cents reported in the corresponding period a year ago. Daily average quotations ranged from a high of 60.98 cents on Friday, January 16 to a low of 60.27 cents on Thursday, January 22. Spot transactions reported in the Daily Spot Cotton Quotations for the week ended January 22 totaled 76,253 bales. This compares to 105,975 reported last week and 58,050 bales reported the corresponding week a year ago. Total spot transactions for the season were 881,214 bales compared to 546,697 the corresponding week a year ago. The ICE March settlement price ended the week at 63.88 cents, compared to 64.71 cents last week.

41-4-34 Prices								
Date	SE	ND	SD	ETX-STX	WTX-KS-OK	DSW	SJV	7-MKT AVG
Jan 16	62.91	62.41	62.41	58.91	60.16	59.91	60.16	60.98
Jan 19	Holiday		Holiday		Holiday		Holiday	
Jan 20	62.59	62.09	62.09	58.59	59.84	59.59	59.84	60.66
Jan 21	62.55	62.05	62.05	58.55	60.30	59.55	59.80	60.69
Jan 22	62.13	61.63	61.63	58.13	59.88	59.13	59.38	60.27
31-3-36 Prices								
Date	SE	ND	SD	ETX-STX	WTX-KS-OK	DSW	SJV	7-MKT AVG
Jan 16	68.66	67.16	66.66	65.66	64.66	65.91	72.56	67.32
Jan 19	Holiday		Holiday		Holiday		Holiday	
Jan 20	68.34	66.84	66.34	65.34	64.34	65.59	72.24	67.00
Jan 21	68.30	66.80	66.30	65.30	64.80	65.55	72.20	67.04
Jan 22	67.88	66.38	65.88	64.88	64.38	65.13	71.78	66.62
Futures Settlement							Far Eastern A Index 1/	
Date	Mar-26	May-26	Jul-26	Oct-26	Dec-26	Mar-27	Current	
Jan 16	64.66	66.23	67.65	68.20	69.06	69.80	74.80	
Jan 19	Holiday		Holiday		Holiday		74.80	
Jan 20	64.34	65.96	67.43	68.26	69.07	69.82	74.80	
Jan 21	64.30	65.92	67.40	68.33	69.16	69.86	74.55	
Jan 22	63.88	65.49	66.97	68.31	68.97	69.76	74.55	
Spot Transactions								
Date	SE	ND	SD	ETX-STX	WTX-KS-OK	DSW	SJV	PIMA
Jan 16	347	0	0	0	12,001	0	0	0
Jan 19	Holiday		Holiday		Holiday		Holiday	
Jan 20	804	0	0	0	14,735	0	0	0
Jan 21	117	0	0	0	28,630	0	0	0
Jan 22	649	0	0	0	18,970	0	0	0
Weekly Totals	1,917	0	0	0	74,336	0	0	0

Source: USDA, AMS, Cotton and Tobacco Program, 1/ Cotlook

Southeastern Markets Regional Summary

Danny Pino ♦ Macon, GA ♦ 478.752.3560 ♦ Danny.Pino@usda.gov

Spot cotton trading was moderate. Supplies were moderate. Demand was good. Producer offerings were moderate. Average local spot prices were weak. Trading of CCC-loan equities was inactive.

A mix of sun and clouds was observed across the lower Southeast during the period with seasonably cold temperatures. Daytime high temperatures were in the 50s and 60s. Nighttime lows varied from the 20s to 40s. Over the weekend snow flurries and rainfall were received across the region. Weekly accumulated precipitation measured from one inch across the Florida Panhandle, South Georgia, and Alabama with slightly heavier totals recorded farther north. Fieldwork and harvest activities were delayed due to wet conditions. Ginning neared completion and some gins remained on gin days as they waited for backlogs of modules to arrive on gin yards from the last harvested fields. A winter storm bringing damaging snow, sleet, and freezing rain was forecast for the approaching weekend. Producers, ginners, and industry members made plans to attend meetings scheduled for early 2026.

Similar weather conditions were observed across the upper Southeast during the period. Daytime high temperatures were in the 40s and 50s. Nighttime lows were in the 20s and 30s. Light moisture was received across cotton growing areas of the eastern Carolinas and Virginia. Weekly accumulated precipitation totals measured around one inch of moisture. Harvesting and fieldwork were delayed as soils were

too soft to support equipment. Ginning neared completion as some gins remained on gin days as they waited for the last modules to arrive from fields. A winter storm bringing damaging snow, sleet, and freezing rain was forecast for the approaching weekend. Producers, ginners, and industry members made plans to attend meetings scheduled for early 2026.

Textile Mill

Domestic mill buyers inquired for a moderate volume of color 42 and 51, leaf 4 and better, and staple 35 and longer for April through June delivery. No sales were reported. Finished product demand was reported as steady. Mill buyers maintained a cautious undertone.

Demand through export channels was moderate. Agents throughout the Far East inquired for any discounted styles of cotton. No sales were reported.

Trading

- A heavy volume of color 31 and 41 leaf 2 and 3, staple 35 and longer, mike 37-49, strength 27-30, and uniformity 80-83 sold for around 69.25 cents, FOB car/truck, Georgia terms (Rule 5, compression charges paid, 30 days free storage).
- A moderate volume of color 31 and 41, leaf 3 and 4, staple 35 and longer, mike 43-49, strength 28-32, and uniformity 79-82 sold for around 150 on ICE March futures, same terms as above.
- A moderate volume of color 31 and 41, leaf 3 and 4, staple 36 and 37, mike 43-49, strength 27-30, and uniformity 79-81 sold for around 68.50 cents, same terms as above.
- A moderate volume of color 31 and 41, leaf 3 and 4, staple 34 and longer, mike 33-49, strength 27-32, and uniformity 78-81 sold for around 64.75 cents, same terms as above.

South Central Markets Regional Summary

Aerielle McDaniel ♦ Memphis, TN ♦ 901.384.3016 ♦ Aerielle.McDaniel@usda.gov

North Delta

Spot cotton trading was inactive. Supplies and producer offerings were light. Demand was very light. Average local spot prices were weak. No forward contracting is expected to happen until the price of raw-cotton rebounds.

Intervals of cloudy to sunny skies were persistent and varied throughout the reporting period. Wintry winds pushed through the region bringing chilling daytime and nighttime temperatures. Daytime temperature highs began in the 50s and dropped into the 20s. Abundant sunshine after chilling rain showers helped increase temperatures into the low 50s. Overnight lows were in the teens to 40s. Precipitation totals measured from trace amounts to around one-half of an inch of rain. According to the National Weather Service, a severe winter storm is in the nearby forecast with a mix of snow and freezing rain. Around three inches of snow is expected to cover cotton growing areas. Wind gusts are expected to be as high as 30 miles per hour in Arkansas, in the Missouri Bootheel, and in Tennessee. Moisture levels are adequate to lightly droughted. No Fieldwork was reported. Producers continued to monitor commodity prices, while others prepared to sell farming equipment. Ginning continued to gain headway in Arkansas and Missouri nearing completion each day. Virtual and in-person meetings were being planned and held in local farming territories.

South Delta

Trading of spot cotton and CCC-loan equities was inactive. Supplies of available cotton were light. Demand was very light. Average local spot prices were weak. There was no interest in forward contracting. Producers waited for prices to be restored to fix prices on their current-crop cotton.

Cloudy skies prevailed during most of the period. Plentiful sunshine after light rainfall helped regulate daytime highs in the 30s to 50s. Nighttime lows were in the low 20s, rising into the low 40s. Precipitation totals measured trace amounts to around three-quarters of an inch of rain. According to the National Weather Service, a severe winter storm is forecast and is expected to bring heavy snowfall and freezing rain. Some producers were eager about the wintry precipitation in hopes that it would restore much needed moisture to overly droughted cropland. No fieldwork was reported in cotton-growing areas. Local experts are expecting to see a decrease in planted acres for the upcoming crop season. Virtual and in-person meetings were being planned and held in local farming territories.

Trading

North Delta

- No trading activity was reported.

South Delta

- No trading activity was reported.

Southwestern Markets Regional Summary

Bethany Lindgren ♦ Memphis, TN ♦ 901.384.3016 ♦ Bethany.Lindgren@usda.gov
Jane Byers-Angle ♦ Lubbock, TX ♦ 806.283.9389 ♦ Jane.Byers-Angle@usda.gov

East Texas-South Texas

Spot cotton trading was inactive. Supplies and producer offerings were light. Demand was light. Average local spot prices were weak. Producer interest in forward contracting was light. Trading of CCC-loan equities was inactive. Foreign mill inquiries were moderate. Interest was best from Bangladesh, China, Pakistan, Taiwan, and Vietnam.

In East Texas, mostly sporadic rain showers and overcast conditions were experienced throughout the week. Daytime temperatures were in the 50s to the 60s. Nighttime temperatures in the 20s to the 50s. A winter storm pattern is forecasted to move into the region with the potential for snow, sleet, and icy conditions. Any precipitation received will be beneficial to fortify sub-soil moisture and return nutrients to the fields. Ahead of wet conditions, producers completed fieldwork and applied fertilizers in fields. According to local experts, acreage is anticipated to be like last year's planted acreage in central Texas as most producers are expected to stick to normal crop rotations. Spotty showers lingered in the South Texas region during the week, producing a light accumulation of rainfall. An arctic blast is forecast to move into the territory by week's end, producing a wintry mix in areas of the Upper Coast and Coastal Bend and bring additional rainfall to areas of the lower Rio Grande Valley. Daytime high temperatures were in the 50s to the 80s. Nighttime temperatures were in the 30s to the 60s. Fieldwork continued. Producers applied fertilizers and prepped fields for planting. Industry meetings were being planned and attended.

West Texas-Kansas-Oklahoma

Spot cotton trading was active. Supplies were heavy. Producer offerings were moderate. Demand was moderate. Average local spot prices were steady. Producer interest in forward contracting was light. Trading of CCC-loan equities was active. Foreign mill inquiries were moderate. Interest was best from Bangladesh, China, Pakistan, Taiwan, and Vietnam.

A widespread winter storm was in the nearby forecast and expected to bring ice and heavy snow to the cotton producing areas of Texas, eastern New Mexico, Kansas, and Oklahoma. The mild, dry winter weather will shift on Friday, January 23, into a potentially dangerous storm. Most of the operating gins were ginning 24 hours daily, but scheduled closures Friday, January 23 through Sunday, January 25 in anticipation of snow, sleet, and ice. For this reporting period from Friday, January 16 through Thursday, January 22, daytime highs in Texas ranged from the low 30s to the low 60s, while overnight temperatures dipped into the teens to the 40s. Conditions were dry, and periodically windy. In the Rolling Plains, some producers continued stripper harvesting activities. Modules in the fields were transported to the gin yards. Many ginning plants finished seasonal bale pressing services, though some operations were projected to continue into February and March.

Daytime temperatures across Kansas fluctuated from the upper 20s into the mid-50s, with nighttime lows dipping into the lower teens to upper 20s. Western Kansas received light snowfall, but an Arctic cold front, referred to as Fern, was forecast to enter the state on Friday, January 23. Ginning operations continued and pressing services were anticipated to run through March. Modules remained in the fields and were transported to the gin yards as space became available. Field and ginning activity was largely paused as winter storms passed through. In southwestern Oklahoma, daytime highs ranged from the upper 30s to the lower 60s, while overnight lows settled into the teens to 30s. Dry conditions persisted. Ginning operations were completed at some plants, but a few continued at a steady pace and were expected to offer pressing services for another 30 days. Gin yards were at capacity and modules remained in the fields awaiting pick-up and a ride to the gins.

Southwestern Markets Regional Summary

Bethany Lindgren ♦ Memphis, TN ♦ 901.384.3016 ♦ Bethany.Lindgren@usda.gov

Jane Byers-Angle ♦ Lubbock, TX ♦ 806.698.4648 ♦ Jane.Byers-Angle@usda.gov

Trading

East Texas/South Texas

- No trading activity was reported.

West Texas, Kansas, & Oklahoma

- In Texas, lots containing a heavy volume of mostly color 11, 21, and 12, leaf 3 and better, staple 36 to 38, mike 38-44, strength 29-32, and uniformity 80-84 sold for 62.75 to 64.25 cents per pound, FOB car/truck, (compression charges not paid).
- Mixed lots containing a heavy volume of color 23 and better, leaf 3 and better, staple 35-37, mike 33-50, strength 28-34, uniformity 78-82, and 25 percent extraneous matter sold for 56.75 to 58.00 cents, same terms as above.
- In Kansas, mixed lots containing a heavy volume of color 31-52, leaf 3-8, staple 37-39, mike 36-45, strength 31-35, uniformity 80-84, and 25 percent extraneous matter sold for 54.75 to 59.50 cents, same terms as above.
- A heavy volume of mixed lot containing color 22-33, leaf 2-5, staple 35-37, mike 25-35, strength 26-34, and uniformity 79-83 sold for around 53.00 cents, same terms as above.
- In Oklahoma, a lot containing a heavy volume of color 22 and better, leaf 4 and better, staple 38-42, mike 31-50, strength 28-35, and uniformity 78-85 sold for around 65.25 cents, same terms as above.
- A mixed lot containing a heavy volume of color 21 to 41, leaf 2-4, staple 39-40, mike 35-45, strength 30-35, and uniformity 80-84 sold for around 63.25 cents, same terms as above.
- A heavy volume of CCC-loan equities sold for 5.00 to 6.25 cents.

Western Markets Regional Summary

Veronica Williamson ♦ Florence, SC ♦ 843.667.4381 ♦ Veronica.Williamson@usda.gov

Desert Southwest (DSW)

Spot cotton trading was inactive. Supplies and producer offerings were light. Demand was light. Producer interest in forward contracting was light. Average local prices were weak. No Forward contracting or domestic mill activity was reported. Foreign mill inquiries were light.

Weather conditions in central Arizona were sunny to partly cloudy. Warm daily temperatures in the 70s and 80s were above average for this time of year. Nightly lows were in the 40s and 50s. No rain was recorded during the period. In southeastern parts of Arizona, daily temperatures were in the mid-to-upper 60s under clear and sunny skies. Nighttime temperatures dipped below freezing into the 20s. A cold front is in the nearby forecast and is expected to bring cooler temperatures and chances for rain. Gins continued pressing operations. In New Mexico and El Paso, TX, skies were clear and sunny with daytime temperatures in the 50s and 60s. Nightly lows were in the 20s and 30s. No rainfall was recorded during the period, but rain chances are in the nearby forecast. Ginning neared completion. Producers attended annual meetings and discussed planting intentions for the upcoming season.

San Joaquin Valley (SJV)

Spot cotton trading was inactive. Supplies and demand were light. No forward contracting or domestic mill activity was reported. Average local prices were weak. Foreign mill inquiries were light.

Morning fog and cloudy skies were prevalent throughout the report period. Daily temperatures were in the 50s and 60s, with overnight lows in the 40s. No rainfall was recorded in the period. Producers attended annual meetings and discussed planting intentions for the upcoming season.

American Pima (AP)

Spot cotton trading was inactive. Supplies were moderate. Demand was light. No forward contracting or domestic mill activity was reported. Average local spot prices were steady. Foreign mill inquiries were light. Interest was best from India and China.

In the San Joaquin Valley, daily temperatures were the 50s and 60s. Nightly lows were in the 40s. No rain was recorded during the period. In Arizona, and El Paso, TX, weather conditions were clear and sunny. Daily temperatures were mild in the 50s and 60s, but nighttime lows cooled below freezing into 20s. No rainfall was recorded during the period, but rain chances are in the nearby forecast. Ginning neared completion. Throughout the Far West producers attended annual meetings and discussed planting intentions for the upcoming season.

Trading

Desert Southwest

- No trading activity was reported.

San Joaquin Valley

- No trading activity was reported.

American Pima

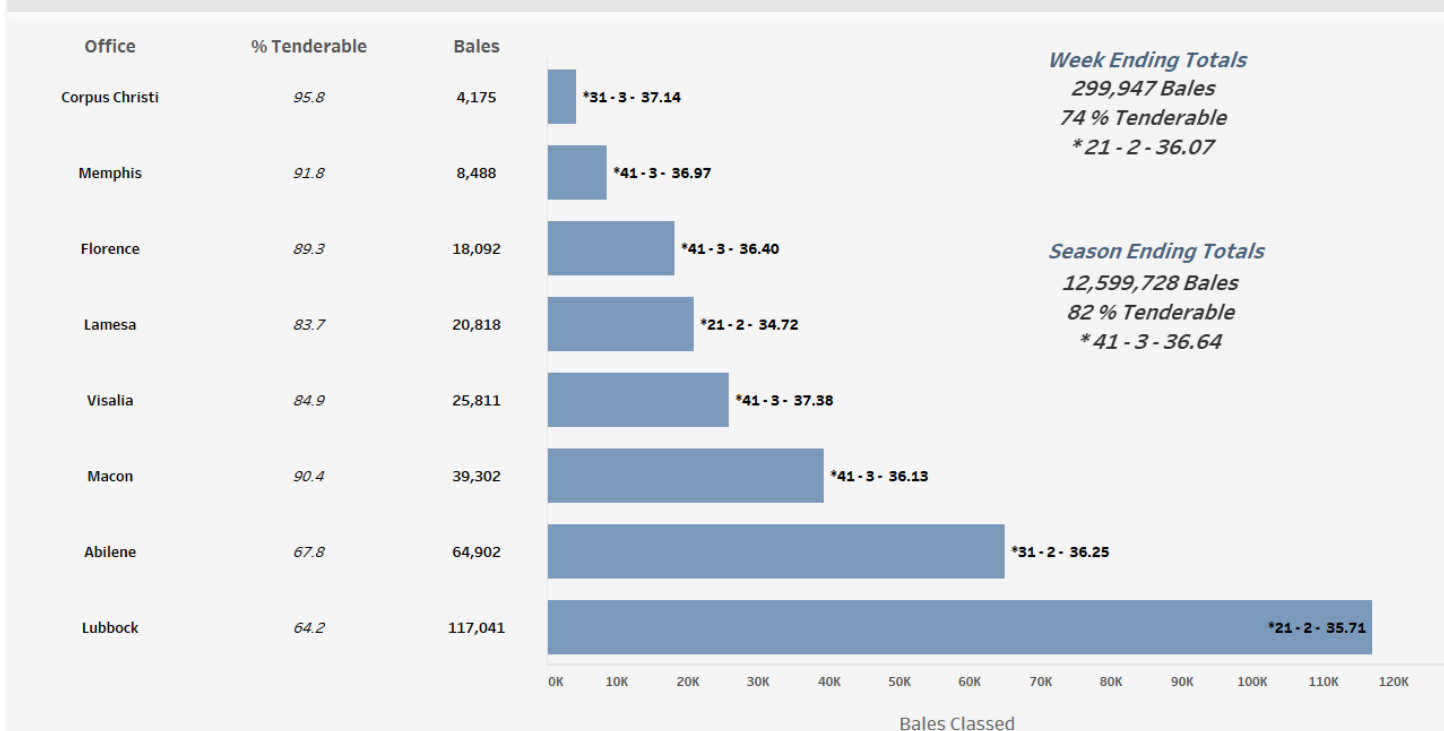
- No trading activity was reported.

Cotton Bales Classed by Office

For the week ending January 22, 299,947 bales were classed. All offices are classing cotton, except Dumas. Classing data was withheld for the Rayville Offices to avoid disclosure of information from one gin or for less than 500 bales classed. Quality data across all offices for the week was 28.9 percent for color 21, 38.0 percent for leaf 2, staple averaging 36.07, mike averaging 4.12, strength averaging 30.50, and uniformity averaging 80.89. For the entire U.S. upland crop, total classed during the season was 12,599,728 bales.

Bales of Upland Cotton Classed by Office, Week Ending Jan. 22, 2026

*** Predominate Color - Predominate Leaf - Avg. Staple**



USDA, AMS, Cotton and Tobacco Program, Market News, **Data Source: USDA Cotton Quality Data**

[For complete report click here.](#)

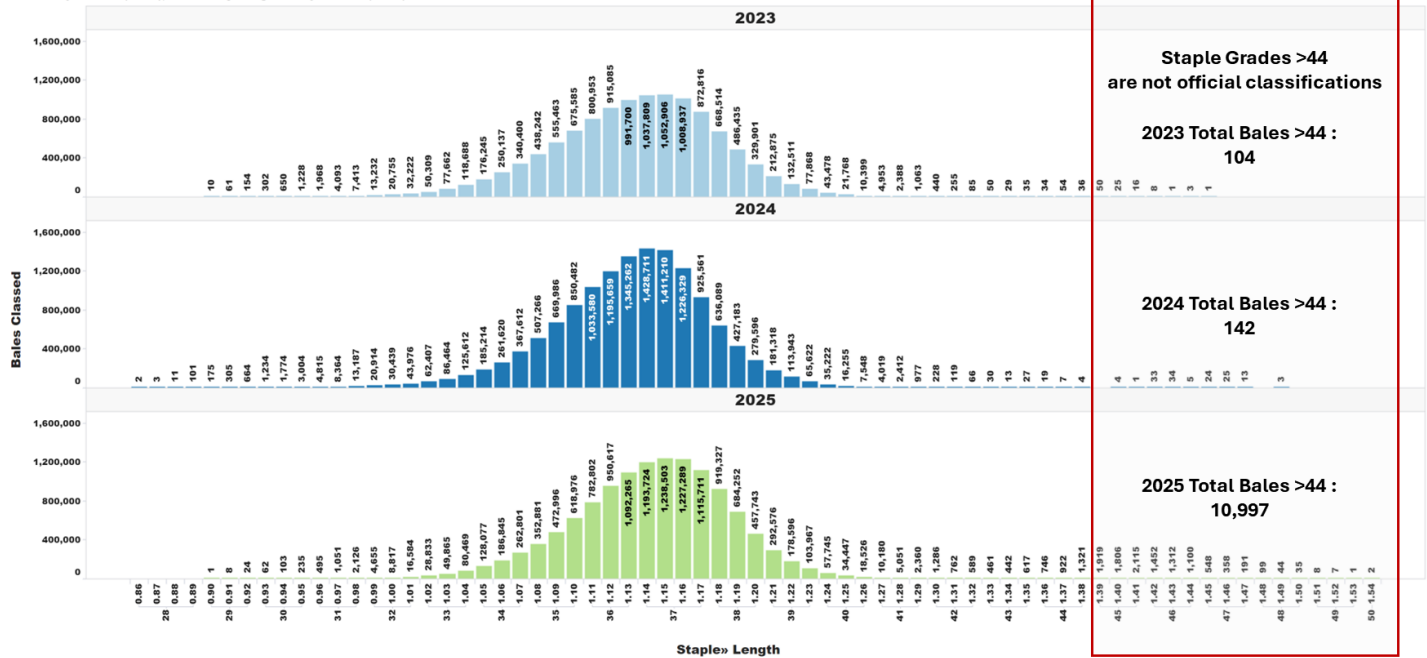
U.S. Upland Cotton Crop Staple Distribution

The official staple lengths for U.S. Upland Cotton, measured in 32nds of an inch, range from "24" to "44 & +". Currently, the longest staple included in the AMS Cotton Market News' weekly quality reports is the "40 & +" designation. Market News is in the process of updating its weekly reports to include all official staple length designations.

For more detailed information, AMS Cotton Market News posts daily per-bale quality data, which includes the instrument measurement for length in inches. You can find this data by office (<https://mymarketnews.ams.usda.gov/viewReport/3471>) and state (<https://mymarketnews.ams.usda.gov/viewReport/3472>). Using this data, Market News has calculated implied staple designations for lengths exceeding 1.35 inches. The accompanying chart shows the number of bales for each staple designation, with staples greater than "44" represented as implied staple lengths. Implied staple lengths are calculated and provided for informational purposes only and are not official designations."

Staple Distribution of U.S. Upland Cotton: 2023-2025 Crops (Classed through Jan. 22, 2025)

Official Staple Grade (28-44), Unofficially Assigned Staple Grade (45-48)



Cotton Ginnings

Running Bales Ginned by Crop – States and United States: January 15, 2023-2026

[Excluding linters]

Crop and State	Running bales ginned			
	2022 Crop	2023 Crop	2024 Crop	2025 Crop
	January 15, 2023	January 15, 2024	January 15, 2025	January 15, 2026
	(number)	(number)	(number)	(number)
Upland				
Alabama	755,000	691,300	620,000	533,750
Arizona	(D)	(D)	(D)	(D)
Arkansas	1,554,050	1,443,800	1,846,350	1,374,450
California	64,600	53,100	63,900	66,400
Florida	129,200	92,350	104,650	90,100
Georgia	2,491,600	2,039,350	1,805,050	1,671,000
Kansas	116,700	(D)	165,050	116,300
Louisiana	355,600	207,200	330,550	223,950
Mississippi	1,133,250	833,100	1,149,500	715,050
Missouri	724,200	784,500	872,200	671,550
 New Mexico	(D)	(D)	(D)	(D)
North Carolina	1,009,350	748,000	786,950	675,350
Oklahoma	156,550	139,200	161,300	359,700
South Carolina	412,550	314,600	315,950	270,000
Tennessee	692,550	657,300	535,250	360,300
Texas	3,108,800	2,714,800	3,968,450	4,891,350
Virginia	201,250	185,700	213,200	172,600
 United States	13,115,050	11,209,300	13,133,550	12,359,550
American Pima				
Arizona	(D)	(D)	(D)	(D)
California	302,050	210,250	285,000	275,100
New Mexico	(D)	(D)	(D)	(D)
Texas	24,900	19,350	33,250	29,750
 United States	374,450	270,800	351,200	335,400
All				
Alabama	755,000	691,300	620,000	533,750
Arizona	203,300	182,250	184,050	169,250
Arkansas	1,554,050	1,443,800	1,846,350	1,374,450
California	366,650	263,350	348,900	341,500
Florida	129,200	92,350	104,650	90,100
Georgia	2,491,600	2,039,350	1,805,050	1,671,000
Kansas	116,700	(D)	165,050	116,300
Louisiana	355,600	207,200	330,550	223,950
Mississippi	1,133,250	833,100	1,149,500	715,050
Missouri	724,200	784,500	872,200	671,550
 New Mexico	54,000	(D)	44,100	29,000
North Carolina	1,009,350	748,000	786,950	675,350
Oklahoma	156,550	139,200	161,300	359,700
South Carolina	412,550	314,600	315,950	270,000
Tennessee	692,550	657,300	535,250	360,300
Texas	3,133,700	2,734,150	4,001,700	4,921,100
Virginia	201,250	185,700	213,200	172,600
 United States	13,489,500	11,480,100	13,484,750	12,694,950

(D) Withheld to avoid disclosing data for individual operations.

[For complete report click here.](#)

Number of Bales in Certificated Stocks

Delivery Points	Stocks as of 1-22-2026	Awaiting Review	Non-Rain Grown Cotton
Dallas/FT. Worth, TX	4,765	0	0
Galveston, TX	3,655	0	0
Greenville, SC	0	0	0
Houston, TX	190	0	0
Memphis, TN	1,812	0	0
Total	10,422	0	0

World market prices for upland cotton, in cents per pound, in effect from 12:01 a.m., EDT, Friday through midnight, EDT, Thursday

Description	2025-2026					
	Dec	Dec	Jan	Jan	Jan	Jan
	19-25	26-01	02-08	09-15	16-22	23-29
Adjusted world price 1/	49.99	50.02	50.76	50.97	51.17	50.99
Course count adjustment	0.00	0.00	0.00	0.00	0.00	0.00
Loan Deficiency Payment (LDP)	2.01	1.98	1.24	1.03	0.83	1.01
Fine count adjustment 2024	0.00	0.00	0.00	0.00	0.00	0.00
Fine count adjustment 2025	0.00	0.00	0.00	0.00	0.00	0.00

1/ Color 41, leaf 4, staple 34, mike 35-36 & 43-49, strength readings of 26.0-28.9 grams per tex, length uniformity of 80.0-81.9 percent.

Source: Farm Service Agency, USDA.

Description	2025-2026			
	2024-2025		2025-2026	
	Through January 16, 2025		Through January 15, 2026	
	<u>Week</u>	<u>Mkt. Year</u>	<u>Week</u>	<u>Mkt. Year</u>
Outstanding sales	-	5,110,500	-	4,019,600
Exports	222,600	3,306,800	187,800	3,330,200
Total export commitments	-	8,417,300	-	7,349,800
New sales	352,900	-	426,500	-
Buy-backs and cancellations	3,900	-	14,000	-
Net sales	348,900	-	412,500	-
Sales next marketing year	79,800	554,400	25,900	533,100

Net sales of Upland totaling 412,500 RB for 2025/2026--a marketing-year high--were up 21 percent from the previous week and up noticeably from the prior 4-week average. Increases primarily for Vietnam (220,700 RB, including 4,400 RB switched from China), Bangladesh (38,600 RB), Pakistan (31,800 RB, including decreases of 2,700 RB), Malaysia (26,500 RB), and India (26,100 RB), were offset by reductions for Honduras (4,800 RB). Net sales of 25,900 RB for 2026/2027 reported for Nicaragua (9,900 RB), Turkey (8,500 RB), Indonesia (7,500 RB), and Pakistan (2,700 RB), were offset by reductions for Vietnam (2,600 RB). Exports of 187,800 RB--a marketing-year high--were up 20 percent from the previous week and 26 percent from the prior 4-week average. The destinations were primarily to Vietnam (62,300 RB), Pakistan (45,900 RB), Indonesia (16,600 RB), Bangladesh (14,100 RB), and Turkey (13,300 RB). Net sales of Pima totaling 16,400 RB for 2025/2026--a marketing-year high--were up 4 percent from the previous week and up noticeably from the prior 4-week average. Increases were reported for India (9,100 RB), Vietnam (4,500 RB), China (2,600 RB), and Thailand (200 RB). Exports of 10,000 RB were up 2 percent from the previous week and 23 percent from the prior 4-week average. The destinations were primarily to Vietnam (3,500 RB), India (1,600 RB), Egypt (1,300 RB), Costa Rica (900 RB), and Pakistan (700 RB).

Exports for Own Account: For 2025/2026, the current exports for own account outstanding balance of 41,700 RB were to India (30,100 RB), Bangladesh (4,400 RB), Vietnam (3,200 RB), Pakistan (2,300 RB), and Turkey (1,700 RB).

Source: Export Sales Reporting Division, Foreign Agricultural Service, USDA.

January 22, 2026

NOTE: Data may not add due to rounding.

American Pima Spot Quotations

American Pima quotations are for cotton equal to the Official Standards, net weight, in mixed lots, UD Free, FOB warehouse. 1/

AMERICAN PIMA SPOT QUOTATIONS

Color	Leaf	Staple			
		44	46	48	50
1	1	142.75	148.50	150.25	150.25
	2	142.50	148.25	150.00	150.00
	3	135.75	143.50	144.50	144.50
	4				
	5				
	6				
2	1	142.50	148.25	150.00	150.00
	2	142.25	148.00	149.75	149.75
	3	135.50	143.25	144.25	144.25
	4	125.50	133.75	134.75	134.75
	5				
	6				
3	1	134.25	142.00	143.00	143.00
	2	131.75	139.50	140.50	140.50
	3	129.50	137.25	138.25	138.25
	4	120.50	128.25	129.25	129.25
	5	104.50	111.75	112.75	112.75
	6				
4	1	115.50	123.25	125.00	125.00
	2	115.25	123.00	124.25	124.25
	3	114.00	121.75	122.75	122.75
	4	109.00	116.75	117.75	117.75
	5	97.75	105.50	106.50	106.50
	6				
5	1				
	2	92.25	102.25	102.25	102.25
	3	92.25	101.75	102.00	102.00
	4	92.25	96.25	96.25	96.25
	5	92.00	96.00	96.00	96.00
	6				
6	1				
	2	84.50	87.50	87.50	87.50
	3	84.50	87.50	87.50	87.50
	4	84.50	87.50	87.50	87.50
	5	84.25	87.25	87.25	87.25
	6	83.75	86.75	86.75	86.75

The current Pima spot quotations represent prices from local sales, export sales, and offerings last reported on December 17, 2025

Mike

Range	Diff.
26 & Below	-2000
27-29	-1500
30-32	-1000
33-34	-500
35 & Above	0

Strength

(Grams per Tex)	
Range	Diff.
34.9 & Below	-1650
35.0 – 35.9	-1400
36.0 – 36.9	-1150
37.0 – 37.9	-800
38.0 – 38.9	0
39.0 – 39.9	0
40.0 & Above	0

Extraneous Matter

Type - Level	Diff.
Prep - Level 1	-810
Prep - Level 2	-1095
Other - Level 1	-715
Other - Level 2	-1035
Plastic - Level 1	-4000
Plastic - Level 2	-4000

1/ Pima spot quotations for color-leaf-staple combinations not quoted will be included as sales of those qualities which are reported.

January 22, 2026