



Weekly Cotton Market Review

Agricultural Marketing Service

Cotton and Tobacco Program ♦ Cotton Market News Division ♦ 3275 Appling Road ♦ Memphis, TN 38133 ♦ 901.384.3016

Mp_cn812

Vol. 107 No. 24
January 16, 2026

Inside this Issue

[Market Overview](#)

[Spot Quotations](#)

[ICE Futures](#)

[Southeastern](#)

[Textile Mill Report](#)

[South Central](#)

[Southwestern](#)

[Western](#)

[Annual Crop Prod.](#)

[Supply and Demand](#)

[Cotton Ginnings](#)

Featured

[Staple Distribution](#)

[Cotton Market Reports](#)

[Subscribe to this report](#)

[Subscribe to all
Cotton Market reports](#)

Spot quotations averaged 18 points higher than the previous week, according to the USDA, Agricultural Marketing Services Cotton and Tobacco Program. Quotations for the base quality of cotton (color 41, leaf 4, staple 34, mike 35-36 and 43-49, strength 27.0-28.9, and uniformity 81.0-81.9) in the seven designated markets averaged 61.08 cents per pound for the week ending Thursday, January 15, 2026. The weekly average was up from 60.90 cents last week, but down from 63.23 cents reported in the corresponding period a year ago. Daily average quotations ranged from a low of 60.70 cents on Friday, January 9 to a high of 61.31 cents on Wednesday, January 14. Spot transactions reported in the Daily Spot Cotton Quotations for the week ended January 15 totaled 105,975 bales. This compares to 163,163 reported last week and 55,511 bales reported the corresponding week a year ago. Total spot transactions for the season were 810,961 bales compared to 488,647 the corresponding week a year ago. The ICE March settlement price ended the week at 64.71 cents, compared to 64.46 cents last week.

41-4-34 Prices								
Date	SE	ND	SD	ETX-STX	WTX-KS-OK	DSW	SJV	7-MKT AVG
Jan 9	62.66	62.16	62.16	58.66	59.66	59.66	59.91	60.70
Jan 12	63.16	62.66	62.66	59.16	60.16	60.16	60.41	61.20
Jan 13	63.13	62.63	62.63	59.13	60.13	60.13	60.38	61.17
Jan 14	63.24	62.74	62.74	59.24	60.49	60.24	60.49	61.31
Jan 15	62.96	62.46	62.46	58.96	60.21	59.96	60.21	61.03
31-3-36 Prices								
Date	SE	ND	SD	ETX-STX	WTX-KS-OK	DSW	SJV	7-MKT AVG
Jan 9	68.41	66.91	66.41	65.41	64.16	65.66	72.31	67.04
Jan 12	68.91	67.41	66.91	65.91	64.66	66.16	72.81	67.54
Jan 13	68.88	67.38	66.88	65.88	64.63	66.13	72.78	67.51
Jan 14	68.99	67.49	66.99	65.99	64.99	66.24	72.89	67.65
Jan 15	68.71	67.21	66.71	65.71	64.71	65.96	72.61	67.37
Futures Settlement								Far Eastern A Index 1/
Date	Mar-26	May-26	Jul-26	Oct-26	Dec-26	Mar-27	Current	
Jan 9	64.41	65.91	67.31	67.84	68.83	69.72	74.45	
Jan 12	64.91	66.44	67.86	68.43	69.27	69.96	74.45	
Jan 13	64.88	66.41	67.86	68.39	69.29	70.00	75.00	
Jan 14	64.99	66.50	67.91	68.45	69.32	69.97	75.05	
Jan 15	64.71	66.27	67.69	68.15	69.10	69.78	75.05	
Spot Transactions								
Date	SE	ND	SD	ETX-STX	WTX-KS-OK	DSW	SJV	PIMA
Jan 9	2,703	0	0	1	15,117	0	0	0
Jan 12	0	0	0	623	5,848	0	0	0
Jan 13	814	0	0	4,950	31,213	0	0	0
Jan 14	3,878	0	4	1,232	20,160	0	0	0
Jan 15	0	0	0	0	19,432	0	0	0
Weekly Totals	7,395	0	4	6,806	91,770	0	0	0

Source: USDA, AMS, Cotton and Tobacco Program, 1/ Cotlook

Southeastern Markets Regional Summary

Danny Pino ♦ Macon, GA ♦ 478.752.3560 ♦ Danny.Pino@usda.gov

Spot cotton trading was moderate. Supplies were moderate. Demand was good. Producer offerings were moderate. Average local spot prices were steady. Trading of CCC-loan equities was inactive.

Overcast and wet weather conditions prevailed across the lower Southeast over the weekend, bringing light to moderate precipitation. A high-pressure system entered the region early in the week bringing dry, sunny, and seasonably colder temperatures. Daytime highs in the 70s early in the period dipped into the 50s as the week progressed. Nighttime lows dropped into the 20s and 30s. Weekly accumulated rainfall totals measured from trace amounts to around one-half of an inch of precipitation, with the heaviest totals recorded in north Alabama and south Georgia. A winter storm in the forecast has the potential to bring freezing temperatures, snowfall, and flurries from areas of the Gulf of America to the Atlantic coastal region in the near term. Harvesting neared completion as fieldwork continued in areas where soils were firm enough to support equipment. Many gins had finished pressing operations for the season and others remained on gin days as they waited for backlogs of modules to build on gin yards. Producers, ginners, and industry members made plans to attend meetings scheduled for early 2026.

Mostly cloudy conditions over the weekend gave way to abundant sunshine as the week progressed across the upper Southeast. Daytime high

temperatures were in the 80s, but dipped into the 40s and 50s later in the week. Mostly dry conditions prevailed, with the occasional stray shower bringing trace amounts of precipitation to some locales. A winter storm in the forecast has the potential to bring freezing temperatures, snowfall, and flurries to the region over the weekend. Harvesting and fieldwork advanced without interruption and neared completion. Most gins had finished pressing operations for the season and others remained on gin days as they waited for backlogs of modules to accumulate on gin yards. Producers, ginners, and industry members made plans to attend meetings scheduled for early 2026.

[Textile Mill](#)

Domestic mill buyers inquired for a moderate volume of color 42 and 51, leaf 4 and better, and staple 35 and longer for second quarter delivery. No sales were reported. Finished product demand was reported as steady. Mill buyers maintained a cautious undertone.

Demand through export channels was moderate. Representatives for mills in Vietnam inquired for a moderate volume of color 31, leaf 3, and staple 37 for prompt shipment. Agents for mills in Costa Rica inquired for a moderate volume of color 31, leaf 3, and staple 36 for February through September shipment. No sales were reported.

[Trading](#)

- A moderate volume of color 31 and 41, leaf 3 and 4, staple 36 and 37, mike 37-49, strength 28-31, and uniformity 80-83 sold for around 66.75 cents per pound, FOB car/truck (Rule 5, compression charges paid).
- Mixed lots containing a moderate volume of color mostly 51, leaf 3-5, staple 35 and longer, mike 35-42, strength 27-30, and uniformity 79-81 sold for around 60.00 cents per pound, FOB car/truck, Georgia terms (Rule 5, compression charges paid, 30 days free storage).
- A moderate volume of color 31 and 41, leaf 2 and 3, staple 34-36, mike 33-49, strength 28-32, and uniformity 78-81 sold for around 65.00 cents, same terms as above).
- A light volume of color 51 and better, leaf 2-4, staple 35 and longer, mike 43-52, strength 28-32, and uniformity 80-83 sold for around 150 points on ICE March futures, same terms as above.

South Central Markets Regional Summary

Aerielle McDaniel ♦ Memphis, TN ♦ 901.384.3016 ♦ Aerielle.McDaniel@usda.gov

North Delta

Spot cotton trading was inactive. Supplies and producer offerings were light. Demand was light. Average local spot prices were steady. Producers were waiting for prices to be restored to determine their pre-season crop price.

Heavy cloudiness with light rain showers over the weekend brought cold weather conditions to the region, plummeting temperatures. Daytime highs dropped from the 60s into the 30s. Nighttime lows dropped from the 50s into the 20s and 30s. Abundant sunshine mid-week helped restore temperatures temporarily, until afternoon rain showers late in the week cooled temperatures once again. Rainfall totals up to one inch was recorded. Field activities halted until fields were firm enough to withstand equipment. In Arkansas, Missouri, and Tennessee topsoil moisture levels have been restored in cotton-growing areas. According to local experts, forward contracting activity is expected to be light throughout the region for the upcoming crop if commodity prices do not rebound. Warehouses remained full. A total of five gins continue to operate, but are nearing completion.

South Delta

Spot cotton trading was slow. Supplies of available cotton were light. Demand was light. Average local spot prices were steady. Trading of CCC-loan equities were inactive. Merchants purchased a light volume of cotton forfeited to the CCC-loan. Local experts continued to monitor commodity prices in hopes of an increase.

Seasonable cold temperatures were persistent during the period. Afternoon cloudiness with rain chilled daytime temperatures from the low 70s into the low 40s. Overnight lows plummeted from the low 50s into the 20s and 30s. Morning fog warnings were issued at the beginning of the week. Rainfall brought around one and one-half inches of rain. According to the U.S. Drought Monitor report released on January 15, drought intensity was mostly abnormal in Mississippi. In Louisiana, drought intensity ranged mostly from abnormal to moderate drought. Some growers are determining pre-season acreage based on drought conditions. Field activities consisted of applying herbicides to fields to eliminate weeds before planting competitive crops. Market participants expressed concerns about low commodity prices. Cotton was being moved from small warehouses to bigger warehouses in some areas, and shipped out of warehouses for exporting in other locales. Ginning operations have been completed.

Trading

North Delta

- No trading activity was reported.

South Delta

- A light volume of 2024-crop CCC-loan cotton, containing color 52 and better, leaf 3-5, staple 36-38, mike averaging 45.0, strength averaging 28.8, uniformity averaging 81.1, and 100 percent extraneous matter (plastic) sold for around 11.50 cents per pound, FOB warehouse (compression charges not paid).

Southwestern Markets Regional Summary

Bethany Lindgren ♦ Memphis, TN ♦ 901.384.3016 ♦ Bethany.Lindgren@usda.gov

Jane Byers-Angle ♦ Lubbock, TX ♦ 806.283.9389 ♦ Jane.Byers-Angle@usda.gov

East Texas-South Texas

Spot cotton trading was slow. Supplies and producer offerings were moderate. Demand was moderate. Average local spot prices were steady. Forward contracting was completed for the season. Trading of CCC-loan equities was inactive. Foreign mill inquiries were moderate. Interest was best from Bangladesh, Taiwan, and Vietnam.

Mostly sunny and partly cloudy climatic conditions were observed in East Texas this week. Daytime temperatures were in the 50s to the 70s, with chilly nighttime temperatures in the 30s to the 40s. Thunderstorms entering the region mid-week produced rain totals ranging from trace amounts up to one and one-half of an inch of moisture in some parts of the region. Chances for additional precipitation were in the forecast. Producers completed fieldwork and made financial plans. Predominately clear and dry weather continued in the Upper Coast, Coastal Bend, and lower Rio Grande Valley (RGV) region during the week. Daytime high temperatures ranged from the 50s to the 80s, with nighttime temperatures cooling off into the 30s to 50s. Light, isolated showers mid-week produced moisture accumulations varying from trace amounts in the Coastal Bend and lower RGV up to one-quarter of an inch in areas of the Upper Coast. Additional chances for rainfall were in the forecast and would be beneficial to ease droughty soil conditions as producers make planting decisions. Fieldwork activity was picking up. Growers cleaned up fields in preparation for planting and applied fertilizers. Other activities included financial planning, planting decisions, and attending local meetings. Producers attended the Rio Grande Valley Cotton and Grain Pre-Plant Conference on January 14 in Monte Alto, TX. According to local experts, areas of the Coastal Bend are expected to maintain the same number of planted acreage as last year, but total acreage is still yet to be determined in other parts of the South Texas region as not all planting decisions have been made at this point.

West Texas-Kansas-Oklahoma

Spot cotton trading was active. Supplies and producer offerings were heavy. Demand was moderate. Average local spot prices were firm. Forward contracting was completed for the season. Trading of CCC-loan equities was active. Foreign mill inquiries were moderate. Interest was best from Bangladesh, Taiwan, and Vietnam.

Abnormally dry to moderate drought conditions persisted across West Texas, with pockets slipping into severe drought, according to the U.S. Drought Monitor. The ongoing lack of meaningful winter precipitation has become a concern among industry leaders. Daytime highs ranged from the upper 40s to the low 70s, while overnight temperatures dipped into the teens to the 40s. A brief, spotty round of light rain fell early in the period, but was quickly absorbed as gusty winds developed. Harvesting was nearly complete. Remaining modules were trucked to the gin yards. Many ginning plants had finished seasonal bale pressing services, though some operations were expected to continue into February.

Daytime temperatures across Kansas fluctuated from the upper 30s into the mid-60s, with nighttime lows dipping into the teens to 30s. A cold front brought beneficial rainfall and occasional gusty winds. Ginning continued. Hundreds of modules remained in the fields and were transported to the gin yards when space became available. Some irrigated fields were strip-tilled, and planting seed was booked for next season. Industry remained optimistic because of the excellent yields. In southwestern Oklahoma, daytime highs ranged from the upper 50s to the low 70s, while overnight lows settled into the 20s to 40s. Dry conditions persisted. Harvesting was virtually completed. Ginning operations continued at a steady pace.

Southwestern Markets Regional Summary

Bethany Lindgren ♦ Memphis, TN ♦ 901.384.3016 ♦ Bethany.Lindgren@usda.gov

Jane Byers-Angle ♦ Lubbock, TX ♦ 806.698.4648 ♦ Jane.Byers-Angle@usda.gov

Trading

East Texas/South Texas

- Mixed lots containing a heavy volume of color 31 and better, leaf 1-4, staple 37-39, mike 37-49, strength 28-33, and uniformity 79-83 traded for 64.50 to 65.00 cents per pound, FOB warehouse, (compression charges not paid).

West Texas, Kansas, & Oklahoma

- In Texas, lots containing a heavy volume of color 22 and better, leaf 3 and better, staple 35 to 37, mike 33-51, strength 27-35, and uniformity 78-82 sold for 61.00 to 63.50 cents per pound, FOB car/truck, (compression charges not paid).
- Mixed lots containing a heavy volume of color 22 and better, leaf 4 and better, staple 33-37, mike 32-51, strength 26-30, and uniformity 78-82 sold for 57.50 to 58.50 cents, same terms as above.
- In Kansas, lots containing a moderate volume of color 41 and better, leaf 5 and better, staple 36-37, mike 29-38, strength 30-34, and uniformity 77-81 sold for 58.25 to 60.25 cents, same terms as above.
- A moderate volume of mixed lots containing color 31-23, leaf 3-6, staple 36-40, mike 25-38, strength 26-32, uniformity 76-82, and 50 percent extraneous matter sold for 52.00 to 55.00 cents, same terms as above.
- In Oklahoma, lots containing a heavy volume of color 21 and 31, leaf 4 and better, staple 36-40, mike 34-46, strength 29-33, and uniformity 78-83 sold for 63.75 to 64.00 cents, same terms as above.
- Mixed lots containing a heavy volume of color 21 and 31, leaf 3 and better, staple 35-37, mike 28-49, strength 30-34, and uniformity 79-83 sold for 56.50 to 61.00 cents, same terms as above.

Western Markets Regional Summary

Veronica Williamson ♦ Florence, SC ♦ 843.667.4381 ♦ Veronica.Williamson@usda.gov

Desert Southwest (DSW)

Spot cotton trading was inactive. Supplies were moderate and producer offerings were light. Demand was light. Average local prices were steady. No forward contracting or domestic mill activity was reported. Foreign mill inquiries were light.

Sunny to partly cloudy skies were prevalent in central Arizona. Daily temperatures were in the 60s and 70s, with overnight lows mostly in the 40s. No significant amount of rainfall was recorded in the period. In southeastern parts of Arizona, daily temperatures were cool at the beginning of the period with highs in the 50s and nightly lows in the 30s. Ginning continued. Most gins are estimating they will operate until the first part of February, with one operating into March. In New Mexico and El Paso, Texas daytime temperatures were mostly in the 50s and 60s. No significant amount of rainfall was recorded in the period. Ginning neared completion.

San Joaquin Valley (SJV)

Spot cotton trading was inactive. Supplies and demand were light. No forward contracting or domestic mill activity was reported. Average local prices were steady. Foreign mill inquiries were light.

Daytime high temperatures were in the 50s and 60s. Overnight lows were in the high 30s to low 40s. No rainfall was recorded in the period. Recent rains have been beneficial for topsoil moisture, but more

rain and snow are needed to help replenish the reservoir systems. Ginning continued. The statewide snow water equivalent was reported at 10 inches, which is 38 percent of the April 1 average and 80 percent of normal for this date, according to the California Department of Water Resources on January 15. Ginning continued.

American Pima (AP)

Spot cotton trading was inactive. Supplies were moderate. Demand was light. No forward contracting or domestic mill activity was reported. Average local spot prices were steady. Foreign mill inquiries were light.

Weather conditions throughout the Far West were cloudy to partly cloudy. High temperatures ranged from the 50s to 70s, with nightly lows ranging from the 30s to the 50s. No significant amount of rain was recorded during the period. In Arizona, ginning continues and most will complete operations for the season by the first of February. In California, recent rains have been beneficial for topsoil moisture, but more rain and snow are needed to help replenish the reservoir systems. Ginning continued. The statewide snow water equivalent was reported at 10 inches, which is 38 percent of the April 1 average and 80 percent of normal for this date, according to the California Department of Water Resources on January 15.

Trading

Desert Southwest

- No trading activity was reported.

San Joaquin Valley

- No trading activity was reported.

American Pima

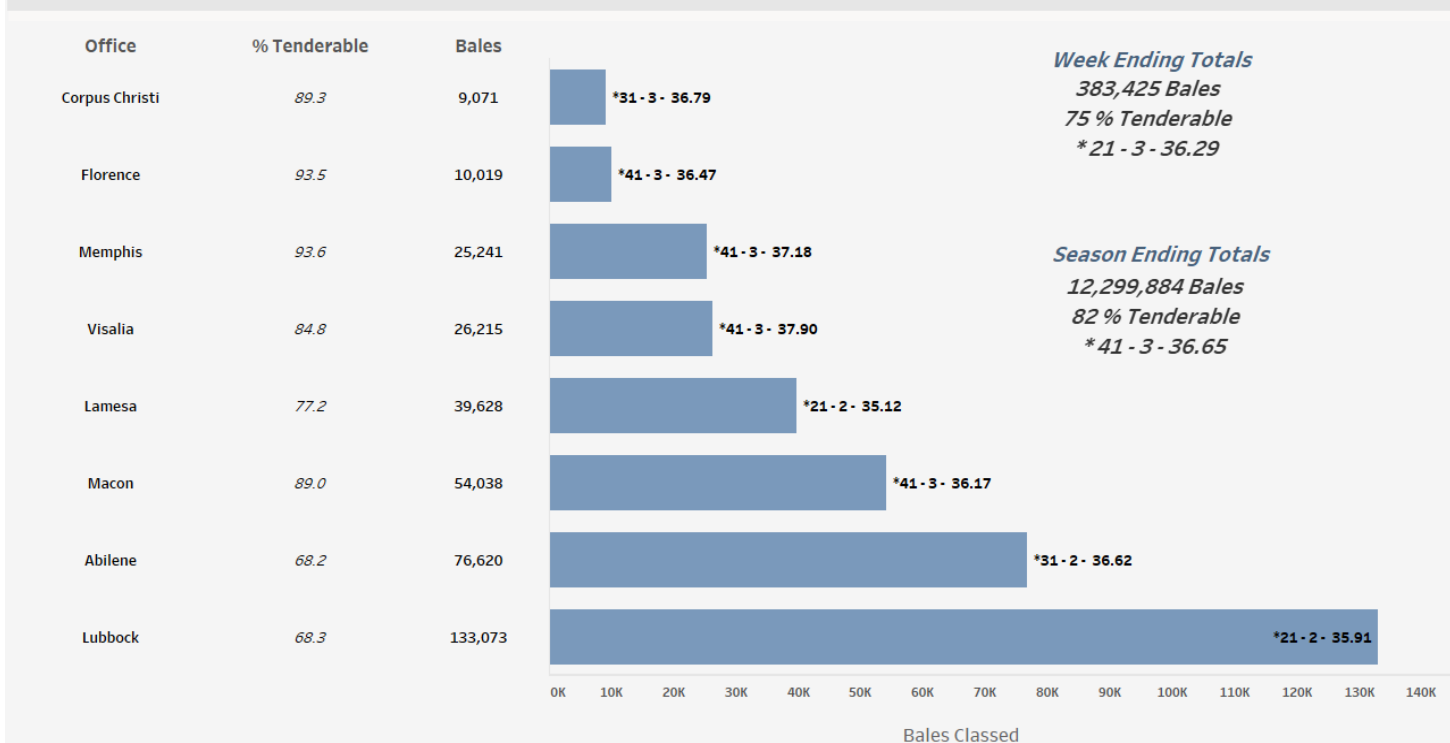
- No trading activity was reported.

Cotton Bales Classed by Office

For the week ending January 15, 383,425 bales were classed. All offices are classing cotton. Classing data was withheld for the Dumas and Rayville Offices to avoid disclosure of information from one gin or for less than 500 bales classed. Quality data across all offices for the week was 27.5 percent for color 21, 35.5 percent for leaf 3, staple averaging 36.29, mike averaging 4.16, strength averaging 30.72, and uniformity averaging 81.15. For the entire U.S. upland crop, total classed during the season was 12,299,884 bales.

Bales of Upland Cotton Classed by Office, Week Ending Jan. 15, 2026

* Predominate Color - Predominate Leaf - Avg. Staple



USDA, AMS, Cotton and Tobacco Program, Market News, **Data Source: USDA Cotton Quality Data**

[For complete report click here.](#)

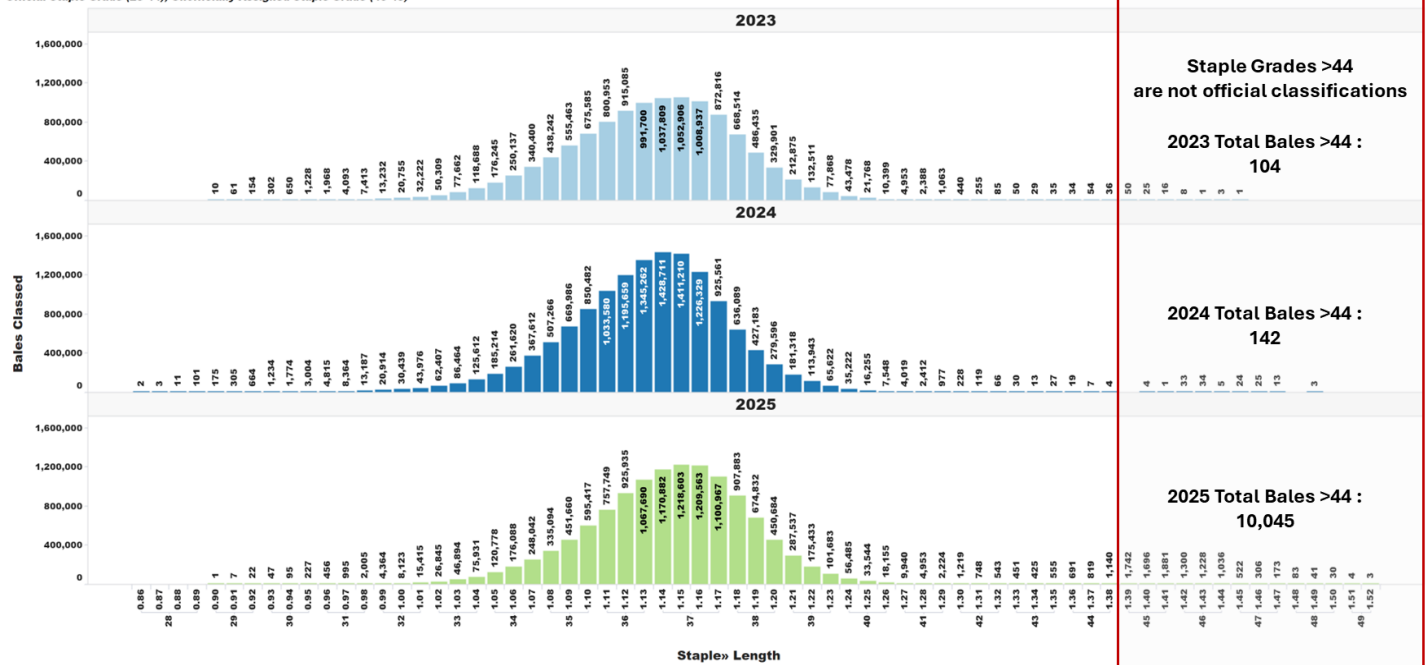
U.S. Upland Cotton Crop Staple Distribution

The official staple lengths for U.S. Upland Cotton, measured in 32nds of an inch, range from "24" to "44 & +". Currently, the longest staple included in the AMS Cotton Market News' weekly quality reports is the "40 & +" designation. Market News is in the process of updating its weekly reports to include all official staple length designations.

For more detailed information, AMS Cotton Market News posts daily per-bale quality data, which includes the instrument measurement for length in inches. You can find this data by office (<https://mymarketnews.ams.usda.gov/viewReport/3471>) and state (<https://mymarketnews.ams.usda.gov/viewReport/3472>). Using this data, Market News has calculated implied staple designations for lengths exceeding 1.35 inches. The accompanying chart shows the number of bales for each staple designation, with staples greater than "44" represented as implied staple lengths. Implied staple lengths are calculated and provided for informational purposes only and are not official designations."

Staple Distribution of U.S. Upland Cotton: 2023-2025 Crops (Classed through Jan. 15, 2025)

Official Staple Grade (28-44), Unofficially Assigned Staple Grade (45-48)



Annual Crop Summary

All cotton production is estimated at 13.9 million 480-pound bales, down 3 percent from 2024. The United States yield is estimated at 856 pounds per acre, down 30 pounds from last year. Harvested area, at 7.80 million acres, is down slightly from last year.

Cotton Area Planted and Harvested, Yield, and Production by Type – States and United States: 2023-2025

Type and State	Area planted			Area harvested		
	2023	2024	2025	2023	2024	2025
	(1,000 acres)	(1,000 acres)	(1,000 acres)	(1,000 acres)	(1,000 acres)	(1,000 acres)
Upland						
Alabama	380.0	400.0	290.0	374.0	396.0	285.0
Arizona	76.0	96.0	87.0	75.0	95.0	86.0
Arkansas	510.0	650.0	520.0	505.0	640.0	515.0
California	13.0	21.0	18.0	12.8	20.7	17.7
Florida	89.0	85.0	61.0	87.0	82.0	59.0
Georgia	1,110.0	1,100.0	835.0	1,100.0	1,080.0	825.0
Kansas	112.0	131.0	102.0	93.0	124.0	81.0
Louisiana	120.0	155.0	90.0	115.0	148.0	82.0
Mississippi	400.0	520.0	330.0	395.0	515.0	322.0
Missouri	335.0	400.0	355.0	330.0	380.0	340.0
 New Mexico	 32.0	 42.0	 30.0	 17.0	 28.0	 20.0
North Carolina	380.0	410.0	285.0	370.0	400.0	275.0
Oklahoma	420.0	435.0	390.0	180.0	185.0	330.0
South Carolina	210.0	225.0	170.0	207.0	221.0	167.0
Tennessee	265.0	265.0	205.0	260.0	250.0	190.0
Texas	5,550.0	5,950.0	5,300.0	2,100.0	2,950.0	4,000.0
Virginia	81.0	91.0	73.0	80.0	90.0	72.0
 United States	 10,083.0	 10,976.0	 9,141.0	 6,300.8	 7,604.7	 7,666.7
American Pima						
Arizona	16.0	14.0	15.5	15.9	14.0	15.5
California	85.0	145.0	92.0	82.0	142.0	91.0
New Mexico	17.0	15.0	13.0	16.8	14.5	12.7
Texas	29.0	33.0	21.0	23.0	30.0	19.0
 United States	 147.0	 207.0	 141.5	 137.7	 200.5	 138.2
All						
Alabama	380.0	400.0	290.0	374.0	396.0	285.0
Arizona	92.0	110.0	102.5	90.9	109.0	101.5
Arkansas	510.0	650.0	520.0	505.0	640.0	515.0
California	98.0	166.0	110.0	94.8	162.7	108.7
Florida	89.0	85.0	61.0	87.0	82.0	59.0
Georgia	1,110.0	1,100.0	835.0	1,100.0	1,080.0	825.0
Kansas	112.0	131.0	102.0	93.0	124.0	81.0
Louisiana	120.0	155.0	90.0	115.0	148.0	82.0
Mississippi	400.0	520.0	330.0	395.0	515.0	322.0
Missouri	335.0	400.0	355.0	330.0	380.0	340.0
 New Mexico	 49.0	 57.0	 43.0	 33.8	 42.5	 32.7
North Carolina	380.0	410.0	285.0	370.0	400.0	275.0
Oklahoma	420.0	435.0	390.0	180.0	185.0	330.0
South Carolina	210.0	225.0	170.0	207.0	221.0	167.0
Tennessee	265.0	265.0	205.0	260.0	250.0	190.0
Texas	5,579.0	5,983.0	5,321.0	2,123.0	2,980.0	4,019.0
Virginia	81.0	91.0	73.0	80.0	90.0	72.0
 United States	 10,230.0	 11,183.0	 9,282.5	 6,438.5	 7,805.2	 7,804.9

See footnote(s) at end of table.

--continued

[For complete report click here.](#)

Supply and Demand

The 2025/26 U.S. cotton balance sheet for January shows lower production and ending stocks compared to December. Beginning stocks, consumption, exports, and imports are unchanged. Production is reduced by over 2 percent from last month to 13.9 million bales primarily because of lower production across the Delta. The national average yield declined by 8 percent from last month to 856 pounds per acre as a result of lower yields in the Delta and larger harvested area in the Southwest. With the smaller crop, ending stocks are reduced by 7 percent to 4.2 million bales, or 30.4 percent of disappearance. The projected season average farm price is raised to 61 cents per pound.

U.S. Cotton Supply and Use 1/

	2023/24	2024/25 Est.	2025/26 Proj. Dec	2025/26 Proj. Jan
Area	<i>Million Acres</i>			
Planted	10.23	11.18	9.30	9.28
Harvested	6.44	7.81	7.37	7.80
	<i>Pounds</i>			
Yield per Harvested Acre	899	886	929	856
	<i>Million 480 Pound Bales</i>			
Beginning Stocks	4.65	3.15	4.00	4.00
Production	12.07	14.41	14.27	13.92
Imports	0.00	0.00	0.01	0.01
Supply, Total	16.72	17.57	18.27	17.92
Domestic Use	1.85	1.70	1.60	1.60
Exports, Total	11.75	11.90	12.20	12.20
Use, Total	13.60	13.60	13.80	13.80
Unaccounted 2/	-0.03	-0.03	-0.03	-0.08
Ending Stocks	3.15	4.00	4.50	4.20
Avg. Farm Price 3/	76.1	63.0	60.0	61.0

Note: Reliability calculations at end of report. 1/ Upland and extra-long staple; marketing year beginning August 1. Totals may not add due to rounding. 2/ Reflects the difference between the previous season's supply less total use and ending stocks. 3/ Cents per pound for upland cotton.

[For complete report click here.](#)

Cotton Ginnings

Running Bales Ginned by Crop – States and United States: January 1, 2023-2026

[Excluding linters]

Crop and State	Running bales ginned			
	2022 Crop	2023 Crop	2024 Crop	2025 Crop
	January 1, 2023	January 1, 2024	January 1, 2025	January 1, 2026
	(number)	(number)	(number)	(number)
Upland				
Alabama	720,200	663,600	612,050	517,800
Arizona	(D)	(D)	(D)	(D)
Arkansas	1,474,850	1,427,200	1,769,100	1,344,700
California	54,600	44,200	51,900	59,600
Florida	120,150	91,150	102,500	88,900
Georgia	2,294,400	1,876,450	1,693,700	1,565,600
Kansas	106,050	(D)	148,000	95,250
Louisiana	355,600	207,200	330,550	223,950
Mississippi	1,129,600	831,750	1,148,850	715,050
Missouri	664,950	762,400	847,550	643,750
 New Mexico	(D)	(D)	(D)	(D)
North Carolina	984,500	736,900	773,700	659,800
Oklahoma	134,750	137,200	152,900	314,300
South Carolina	368,450	287,600	299,400	253,150
Tennessee	677,750	647,600	535,250	360,300
Texas	2,978,350	2,685,450	3,820,300	4,496,200
Virginia	199,850	178,950	205,100	170,650
 United States	12,439,050	10,847,000	12,658,550	11,647,000
American Pima				
Arizona	(D)	(D)	(D)	(D)
California	286,150	203,100	267,150	260,900
New Mexico	(D)	(D)	(D)	(D)
Texas	18,950	17,250	30,050	25,850
 United States	344,150	256,050	326,450	315,000
All				
Alabama	720,200	663,600	612,050	517,800
Arizona	168,800	152,800	155,800	138,250
Arkansas	1,474,850	1,427,200	1,769,100	1,344,700
California	340,750	247,300	319,050	320,500
Florida	120,150	91,150	102,500	88,900
Georgia	2,294,400	1,876,450	1,693,700	1,565,600
Kansas	106,050	(D)	148,000	95,250
Louisiana	355,600	207,200	330,550	223,950
Mississippi	1,129,600	831,750	1,148,850	715,050
Missouri	664,950	762,400	847,550	643,750
 New Mexico	45,250	(D)	41,150	28,000
North Carolina	984,500	736,900	773,700	659,800
Oklahoma	134,750	137,200	152,900	314,300
South Carolina	368,450	287,600	299,400	253,150
Tennessee	677,750	647,600	535,250	360,300
Texas	2,997,300	2,702,700	3,850,350	4,522,050
Virginia	199,850	178,950	205,100	170,650
 United States	12,783,200	11,103,050	12,985,000	11,962,000

(D) Withheld to avoid disclosing data for individual operations.

[For complete report click here.](#)

Number of Bales in Certificated Stocks

Delivery Points	Stocks as of 1-15-2026	Awaiting Review	Non-Rain Grown Cotton
Dallas/FT. Worth, TX	5,372	0	0
Galveston, TX	3,655	0	0
Greenville, SC	0	0	0
Houston, TX	190	0	0
Memphis, TN	1,812	0	0
Total	11,029	0	0

World market prices for upland cotton, in cents per pound, in effect from 12:01 a.m., EDT, Friday through midnight, EDT, Thursday

Description	2025-2026					
	Dec	Dec	Dec	Jan	Jan	Jan
	12-18	19-25	26-01	02-08	09-15	16-22
Adjusted world price 1/	50.39	49.99	50.02	50.76	50.97	51.17
Course count adjustment	0.00	0.00	0.00	0.00	0.00	0.00
Loan Deficiency Payment (LDP)	1.61	2.01	1.98	1.24	1.03	0.83
Fine count adjustment 2024	0.00	0.00	0.00	0.00	0.00	0.00
Fine count adjustment 2025	0.00	0.00	0.00	0.00	0.00	0.00

1/ Color 41, leaf 4, staple 34, mike 35-36 & 43-49, strength readings of 26.0-28.9 grams per tex, length uniformity of 80.0-81.9 percent.
Source: Farm Service Agency, USDA.

Description	2024-2025				2025-2026	
	Through January 9, 2025		Through January 8, 2026			
	Week	Mkt. Year	Week	Mkt. Year		
Outstanding sales	-	4,984,100	-	3,794,900		
Exports	224,800	3,084,200	156,100	3,142,400		
Total export commitments	-	8,068,300	-	6,937,300		
New sales	320,400	-	340,700	-		
Buy-backs and cancellations	4,100	-	1,000	-		
Net sales	316,200	-	339,700	-		
Sales next marketing year	1,300	474,500	10,100	507,200		

Net sales of Upland totaling 339,700 RB for 2025/2026--a marketing-year high--were up noticeably from the previous week and up 89 percent from the prior 4-week average. Increases primarily for Vietnam (127,400 RB, including 100 RB switched from Japan and decreases of 100 RB), China (57,200 RB), Pakistan (48,000 RB, including 100 RB switched from China and decreases of 300 RB), Indonesia (25,200 RB), and Bangladesh (14,500 RB), were offset by reductions for Japan (100 RB). Net sales of 10,100 RB for 2026/2027 were reported for Costa Rica (7,200 RB), El Salvador (2,600 RB), and Pakistan (300 RB). Exports of 156,100 RB were up 1 percent from the previous week and 8 percent from the prior 4-week average. The destinations were primarily to Vietnam (56,200 RB), Pakistan (24,900 RB), China (18,200 RB), Turkey (13,500 RB), and Indonesia (10,200 RB). Net sales of Pima totaling 15,700 RB for 2025/2026--a marketing-year high--were up noticeably from the previous week and from the prior 4-week average. Increases primarily for India (11,800 RB), China (2,700 RB), Turkey (400 RB), Vietnam (400 RB switched from China), and Portugal (200 RB), were offset by reductions for Japan (200 RB). Exports of 9,800 RB were up noticeably from the previous week and up 49 percent from the prior 4-week average. The destinations were primarily to India (3,300 RB), China (3,200 RB), Peru (1,400 RB), Costa Rica (900 RB), and Turkey (300 RB).

Exports for Own Account: For 2025/2026, new exports for own account totaling 2,300 RB were to Pakistan. The current exports for own account outstanding balance of 41,700 RB were to India (30,100 RB), Bangladesh (4,400 RB), Vietnam (3,200 RB), Pakistan (2,300 RB), and Turkey (1,700 RB).

Source: Export Sales Reporting Division, Foreign Agricultural Service, USDA.

January 15, 2026

NOTE: Data may not add due to rounding.

American Pima Spot Quotations

American Pima quotations are for cotton equal to the Official Standards, net weight, in mixed lots, UD Free, FOB warehouse. 1/

AMERICAN PIMA SPOT QUOTATIONS					
Color	Leaf	Staple			
		44	46	48	50
1	1	142.75	148.50	150.25	150.25
	2	142.50	148.25	150.00	150.00
	3	135.75	143.50	144.50	144.50
	4				
	5				
	6				
2	1	142.50	148.25	150.00	150.00
	2	142.25	148.00	149.75	149.75
	3	135.50	143.25	144.25	144.25
	4	125.50	133.75	134.75	134.75
	5				
	6				
3	1	134.25	142.00	143.00	143.00
	2	131.75	139.50	140.50	140.50
	3	129.50	137.25	138.25	138.25
	4	120.50	128.25	129.25	129.25
	5	104.50	111.75	112.75	112.75
	6				
4	1	115.50	123.25	125.00	125.00
	2	115.25	123.00	124.25	124.25
	3	114.00	121.75	122.75	122.75
	4	109.00	116.75	117.75	117.75
	5	97.75	105.50	106.50	106.50
	6				
5	1				
	2	92.25	102.25	102.25	102.25
	3	92.25	101.75	102.00	102.00
	4	92.25	96.25	96.25	96.25
	5	92.00	96.00	96.00	96.00
	6				
6	1				
	2	84.50	87.50	87.50	87.50
	3	84.50	87.50	87.50	87.50
	4	84.50	87.50	87.50	87.50
	5	84.25	87.25	87.25	87.25
	6	83.75	86.75	86.75	86.75

The current Pima spot quotations represent prices from local sales, export sales, and offerings last reported on December 17, 2025

Mike	
Range	Diff.
26 & Below	-2000
27-29	-1500
30-32	-1000
33-34	-500
35 & Above	0

Strength	
(Grams per Tex)	
Range	Diff.
34.9 & Below	-1650
35.0 – 35.9	-1400
36.0 – 36.9	-1150
37.0 – 37.9	-800
38.0 – 38.9	0
39.0 – 39.9	0
40.0 & Above	0

Extraneous Matter	
Type - Level	Diff.
Prep - Level 1	-810
Prep - Level 2	-1095
Other - Level 1	-715
Other - Level 2	-1035
Plastic - Level 1	-4000
Plastic - Level 2	-4000

1/ Pima spot quotations for color-leaf-staple combinations not quoted will be included as sales of those qualities which are reported.

January 15 2026