



Weekly Cotton Market Review

Agricultural Marketing Service

Cotton and Tobacco Program ♦ Cotton Market News Division ♦ 3275 Appling Road ♦ Memphis, TN 38133 ♦ 901.384.3016

Mp_cn812

Vol. 107 No. 23
January 08, 2026

Inside this Issue

Market Overview

Spot Quotations

ICE Futures

Southeastern

Textile Mill Report

South Central

Southwestern

Western

Pima Quotations

Featured

Staple Distribution

[Cotton Market Reports](#)

[Subscribe to this report](#)

[Subscribe to all
Cotton Market reports](#)

Spot quotations averaged 24 points higher than the previous week, according to the USDA, Agricultural Marketing Services Cotton and Tobacco Program. Quotations for the base quality of cotton (color 41, leaf 4, staple 34, mike 35 - 36 and 43 - 49, strength 27.0 - 28.9, and uniformity 81.0 - 81.9) in the seven designated markets averaged 60.90 cents per pound for the week ending Thursday, January 8, 2026. The weekly average was up from 60.66 cents last week but down from 64.17 cents reported in the corresponding period a year ago. Daily average quotations ranged from a low of 60.30 cents on Friday, January 2 to a high of 61.35 cents on Tuesday, January 6. Spot transactions reported in the Daily Spot Cotton Quotations for the week ended January 8 totaled 163,163 bales. This compares to 74,541 reported last week and 64,464 bales reported the corresponding week a year ago. Total spot transactions for the season were 704,986 bales compared to 433,136 the corresponding week a year ago. The ICE March settlement price ended the week at 64.46 cents, compared to 64.27 cents last week.

41-4-34 Prices								
Date	SE	ND	SD	ETX-STX	WTX-KS-OK	DSW	SJV	7-MKT AVG
Jan 2	62.26	61.76	61.76	58.26	59.26	59.26	59.51	60.30
Jan 5	62.90	62.40	62.40	58.90	59.90	59.90	60.15	60.94
Jan 6	63.31	62.81	62.81	59.31	60.31	60.31	60.56	61.35
Jan 7	63.10	62.60	62.60	59.10	60.10	60.10	60.35	61.14
Jan 8	62.71	62.21	62.21	58.71	59.71	59.71	59.96	60.75
31-3-36 Prices								
Date	SE	ND	SD	ETX-STX	WTX-KS-OK	DSW	SJV	7-MKT AVG
Jan 2	68.01	66.51	66.01	65.01	63.76	65.26	71.91	66.64
Jan 5	68.65	67.15	66.65	65.65	64.40	65.90	72.55	67.28
Jan 6	69.06	67.56	67.06	66.06	64.81	66.31	72.96	67.69
Jan 7	68.85	67.35	66.85	65.85	64.60	66.10	72.75	67.48
Jan 8	68.46	66.96	66.46	65.46	64.21	65.71	72.36	67.09
Futures Settlement							Far Eastern A Index 1/	
Date	Mar-26	May-26	Jul-26	Oct-26	Dec-26	Mar-27	Current	
Jan 2	64.01	65.37	66.72	67.42	68.22	68.94	74.30	
Jan 5	64.65	65.99	67.31	67.94	68.60	69.18	74.05	
Jan 6	65.06	66.43	67.74	68.39	69.06	69.69	74.70	
Jan 7	64.85	66.27	67.61	68.10	69.05	69.76	75.05	
Jan 8	64.46	65.93	67.31	67.85	68.82	69.62	74.80	
Spot Transactions								
Date	SE	ND	SD	ETX-STX	WTX-KS-OK	DSW	SJV	PIMA
Jan 2	14,610	0	0	969	14,177	0	0	50
Jan 5	0	0	0	0	5,194	0	0	200
Jan 6	462	0	0	139	38,095	0	0	250
Jan 7	4,167	0	0	9	56,481	0	0	100
Jan 8	3,953	0	0	187	24,720	0	0	0
Weekly Totals	23,192	0	0	1,304	138,667	0	0	600

Source: USDA, AMS, Cotton and Tobacco Program, 1/ Cotlook

Southeastern Markets Regional Summary

Danny Pino ♦ Macon, GA ♦ 478.752.3560 ♦ Danny.Pino@usda.gov

Spot cotton trading was active. Supplies were moderate. Demand was good. Producer offerings were moderate. Average local spot prices were firm. Trading of CCC-loan equities was inactive.

Generally cloudy conditions prevailed across the lower Southeast over the weekend and intermittently during the week bringing light precipitation to localized areas. Heavy early morning fog was observed in some locales delaying producers from entering fields. Weekly accumulated precipitation totals measured from trace amounts to around one-quarter of an inch. Daytime high temperatures in the 60s warmed into the 70s as the period progressed. Fair harvesting conditions were reported and fieldwork advanced. Several gins had finished pressing operations for the season and other gins continued to process backlogs of modules on gin yards. Producers, ginners, and industry members made plans to attend meetings scheduled for early 2026.

Mostly cloudy conditions were observed across the upper Southeast with periods of intermittent sunshine. Heavy early morning fog was also observed in many areas. Daytime high temperatures were in the 60s and 70s. Light scattered precipitation was received in some locales over the weekend. Precipitation totals measured from trace amounts to one-quarter of an inch. Good harvesting conditions were reported and advanced at a steady pace. Ginning neared completion and many gins

had finished pressing operations for the season. Producers, ginners, and industry members made plans to attend meetings scheduled for early 2025.

Textile Mill

Domestic mill buyers inquired for a moderate volume of color 42 and 51, leaf 4 and better, and staple 35 and longer for April through June delivery. No sales were reported. Finished product demand was reported as steady. Mill buyers maintained a cautious undertone.

Demand through export channels was moderate. Representatives for mills throughout the Far East inquired for any discounted styles of cotton. No sales were reported.

Trading

- Even-running lots containing color 31 and 41, leaf 3 and 4, staple 36 and 37, mike 43-47, strength 28-30, and uniformity 81-84 sold for around 350 points on ICE March futures, FOB car/truck (Rule 5, compression charges paid).
- A heavy volume of color mostly 41, leaf mostly 3, staple 35-38, mike 37-52, strength 29-32, and uniformity 80-83 sold for around 66.50 to 67.50 cents per pound, FOB car/truck, Georgia terms (Rule 5, compression charges paid, 30 days free storage).
- A moderate volume of color 31 and 41, leaf 3-5, staple 34-37, mike 43-49, strength 28-32, and uniformity 80-83 sold for around 65.00 cents, same terms as above.
- A moderate volume of color mostly 41, leaf 3-5, staple 33-36, mike mostly 50-52, strength 27-31, and uniformity 79-83 sold for around 63.00 cents, same terms as above.

South Central Markets Regional Summary

Aerielle McDaniel ♦ Memphis, TN ♦ 901.384.3016 ♦ Aerielle.McDaniel@usda.gov

North Delta

Spot cotton trading was inactive. Supplies and producer offerings were light. Trading of CCC-loan equities was inactive. Demand was very light. Average local spot prices were firm. Producers had high hopes for a stronger market demand soon.

Daytime high temperatures were in the 40s to 60s. Nighttime lows were in the low 20s rising into the low 50s. Light rain showers early in the period cooled temperatures for the week. Occasional cloudiness was observed mid-week. Precipitations totals measured from trace amounts to around one inch of rain. Rainfall was in the nearby forecast with expectations of light thunderstorms. In areas where fields remained dry, some producers gained headway in pre-season fieldwork for competitive crops. Local experts reported cotton is still being placed into the loan each day. Producers had begun to consider competitive crop prices and input costs and plan for the 2026 crop year. Gins continued to near the end of operations and were expected to be complete soon.

South Delta

Trading of spot cotton and CCC-loan equities was inactive. Supplies of available cotton were light. Demand was very light. Average local spot prices were firm. Producers had high hopes for a stronger market demand soon.

Partly cloudy skies prevailed during the period bringing steady seasonable cool temperatures to the region. Daytime high temperatures were in the low 50s to the low 70s. Overnight lows were in the low 30s to the low 60s. A light rainfall brought less than one-quarter of an inch of rainfall to the region. Although a thunderstorm is in the nearby forecast, more rain is needed to restore soil moisture. Drought conditions remained the same at mostly moderate to severe. There were burn bans issued throughout the territory. Producers had begun to consider competitive crop prices and input costs and plan for the 2026 crop year.

Trading

North Delta

- No trading activity was reported.

South Delta

- No trading activity was reported.

Southwestern Markets Regional Summary

Bethany Lindgren ♦ Memphis, TN ♦ 901.384.3016 ♦ Bethany.Lindgren@usda.gov
Jane Byers-Angle ♦ Lubbock, TX ♦ 806.283.9389 ♦ Jane.Byers-Angle@usda.gov

East Texas-South Texas

Spot cotton trading was slow. Supplies and producer offerings were moderate. Demand was moderate. Average local spot prices were firm. Forward contracting was completed for the season. Trading of CCC-loan equities was inactive. Foreign mill inquiries were moderate. Interest was best from Pakistan, Turkey, and Vietnam.

Sunshine and variable cloud coverage dominated the weather pattern throughout the period in the East Texas territory. Unseasonably warm daytime temperatures were in the 60s to the 80s. Nighttime temperatures rose into the upper 30s to the upper 50s. Chances for thunderstorms were in the forecast for the coming days as a storm front is anticipated to increase chances for severe weather, but no rainfall was reported during the week ending January 8. In South Texas, a mix of sun and clouds with windy weather conditions lingered in the territory throughout the period. Daytime temperatures were in the 70s to 80s, and nighttime temperatures ranged from the 50s to the 70s. Dry conditions persisted, and no rainfall was reported. All areas of the region would benefit from rainfall and will be critical to build soil moisture and provide prime conditions ahead of planting season. Growers prepared to attend seasonal meetings in the next week to discuss current topics and planting intentions in the lower Rio Grande Valley.

West Texas-Kansas-Oklahoma

Spot cotton trading was active. Supplies and producer offerings were heavy. Demand was moderate. Average local spot prices were steady. Forward contracting was completed for the season. Trading of CCC-loan

equities was active. Foreign mill inquiries were moderate. Interest was best from Pakistan, Turkey, and Vietnam.

Unseasonably warm, and dry conditions persisted across West Texas. Daytime highs ranged from the 60s to the low 80s, while overnight temperatures dipped into the 30s and 60s. A round of spotty precipitation occurred late in the period. Concerns were raised regarding the current drought status, above average temperatures, and a lack of winter precipitation. Harvesting was virtually completed. Approximately 10 percent of the ginning plants have completed seasonal pressing services, and a greater percentage will be finished in about seven days. Some gins are expected to continue into February.

Daytime temperatures across Kansas fluctuated from the upper 40s into the mid-60s, with nighttime lows dipping into the 20s to 40s. A late period cold front brought intermittent rainfall and occasional gusty winds. Harvest was completed and ginning was approximately 50 percent done. Hundreds of modules remained in the fields and were transported to the gin yards. Some irrigated fields were strip-tilled, and planting seed was booked for next season. The industry remained optimistic because of the season's excellent yields that caused ginning plants to increase their estimates. In southwestern Oklahoma, daytime highs ranged from the low 60s to the mid-70s, while overnight lows settled into the 30s and 40s. Harvesting was virtually completed. Modules were trucked to gin yards. Ginning operations continued at a steady pace, with some nearing the end of the season.

Southwestern Markets Regional Summary

Bethany Lindgren ♦ Memphis, TN ♦ 901.384.3016 ♦ Bethany.Lindgren@usda.gov

Jane Byers-Angle ♦ Lubbock, TX ♦ 806.698.4648 ♦ Jane.Byers-Angle@usda.gov

Trading

East Texas/South Texas

- A lot containing a light volume of color 41 and 51, leaf 2 and 3, staple 34-36, mike averaging 42.0, strength averaging 27.3, and uniformity averaging 79.5 traded for around 55.25 cents per pound, FOB warehouse, (compression charges not paid).

West Texas, Kansas, & Oklahoma

- In Texas, an even-running lot containing a heavy volume of color 11 and 12, leaf 3 and better, staple 35 and 36, mike 42-49, strength 27-31, and uniformity 79-82 sold for around 63.25 cents per pound, FOB car/truck, (compression charges not paid).
- A mixed lot containing a heavy volume of color 22 and better, leaf 3 and better, staple 35-36, mike 38-51, strength 27-30, and uniformity averaging 80.9 sold for around 59.25 cents, same terms as above.
- In Kansas, an even-running lot containing a moderate volume of color 31 and 41, leaf 4-5, staple 37, mike 41-45, strength 29-32, and uniformity averaging 81.3 sold for around 58.75 cents, same terms as above.
- A heavy volume of mixed lots containing color 21-43, leaf 3-6, staple 35-38, mike 33-37, strength 29-32, uniformity 79-83, and 50 percent extraneous matter sold for 52.50 to 55.50 cents, same terms as above.
- In Oklahoma, a lot containing a heavy volume of color 31 and better, leaf 4 and better, staple 39, mike 37-50, strength 30-38, and uniformity 80-85 sold for around 65.25 cents, same terms as above.

Western Markets Regional Summary

Veronica Williamson ♦ Florence, SC ♦ 843.667.4381 ♦ Veronica.Williamson@usda.gov

[Desert Southwest \(DSW\)](#)

Spot cotton trading was inactive. Supplies and producer offerings were light. Demand was light. Producer interest in forward contracting was light. Average local spot prices were steady. No Forward contracting or domestic mill activity was reported. Foreign mill inquiries were light.

In central Arizona, weather conditions were mostly cloudy, with thunderstorms and rain showers entering the territory by mid-week. Daily temperatures were in the mid-70s at the beginning of the period, but cooled into the low 60s by weeks end. In southeastern Arizona, daily temperatures dropped into the 50s by mid-week. Nighttime lows were in the 50s. Rain showers brought a little over one-quarter of an inch of moisture to the area. Ginning continued. Light showers brought rain accumulations of around one-tenth of an inch to parts of New Mexico and El Paso, TX. Daytime temperatures were in the 60s, with nightly lows in the 30s and 40s. Windy conditions and cooler temperatures were in the nearby forecast. Producers throughout the DSW are reviewing spring planting options. Ginning continues.

[San Joaquin Valley \(SJV\)](#)

Spot cotton trading was inactive. Supplies and demand were light. No forward contracting or domestic mill activity was reported. Average local spot prices were steady. Foreign mill inquiries were light.

In the San Joaquin Valley, cloudy to partly cloudy skies were prevalent. Daily temperatures were in the 50s and 60s, with nighttime lows in the 30s and 40s. Rain accumulations of over one inch was received in some locales. The precipitation will help to fortify subsoil moisture. Recent rains have been beneficial for topsoil moisture. The statewide snow water equivalent was reported at 10 inches, which is 37

percent of the April 1 average and 91 percent of normal for this date, according to the California Department of Water Resources on January 7. Ginning continued.

[American Pima \(AP\)](#)

Spot cotton trading was active. Supplies were moderate. Demand was light. No forward contracting or domestic mill activity was reported. Average local spot prices were steady. Foreign mill inquiries were light.

Weather conditions throughout the Far West were cloudy to partly cloudy. High temperatures ranged from the 50s to 70s, with nightly lows ranging from the 30s to the 50s. Storm clouds were prevalent throughout the Desert Southwest and San Joaquin Valley, bringing rain accumulations from one-tenth of an inch to one inch. According to the California Department of Water Resources, as of January 7, the statewide snow water equivalent was reported at 10 inches, which is 37 percent of the April 1 average and 91 percent of normal for this date. Some gins wrapped up operations for the season during the period, while others continued running steady.

Western Markets Regional Summary

Veronica Williamson ♦ Florence, SC ♦ 843.667.4381 ♦ Veronica.Williamson@usda.gov

Trading

Desert Southwest

- No trading activity was reported.

San Joaquin Valley

- No trading activity was reported.

American Pima

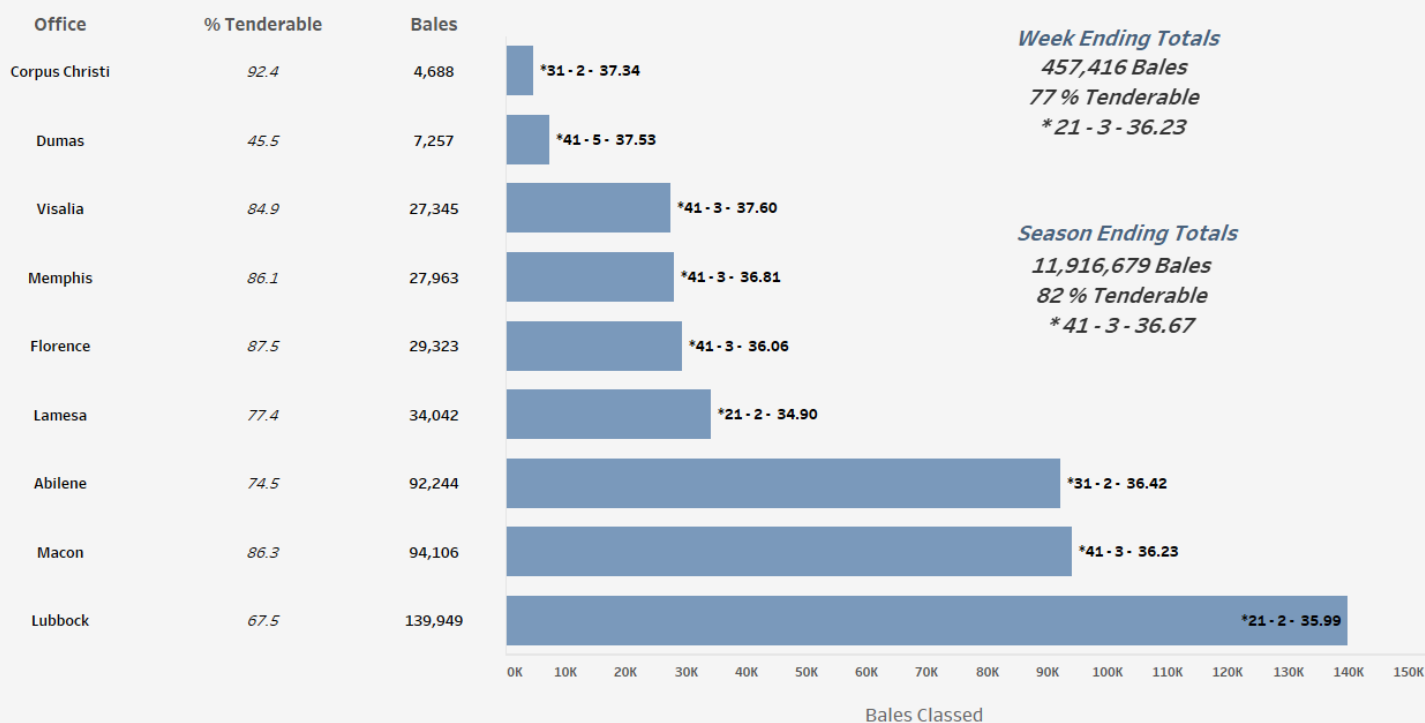
- No trading activity was reported.

Cotton Bales Classed by Office

For the week ending January 8, 457,416 bales were classed. All offices, excluding Rayville, are classing cotton. Quality data across all offices for the week was 26.0 percent for color 21, 36.6 percent for leaf 3, staple averaging 36.23, mike averaging 4.18, strength averaging 30.51, and uniformity averaging 81.09. For the entire U.S. upland crop, total classed during the season was 11,916,679 bales.

Bales of Upland Cotton Classed by Office, Week Ending Jan. 8, 2026

* Predominate Color - Predominate Leaf - Avg. Staple



USDA, AMS, Cotton and Tobacco Program, Market News, *Data Source: USDA Cotton Quality Data*

[For complete report click here.](#)

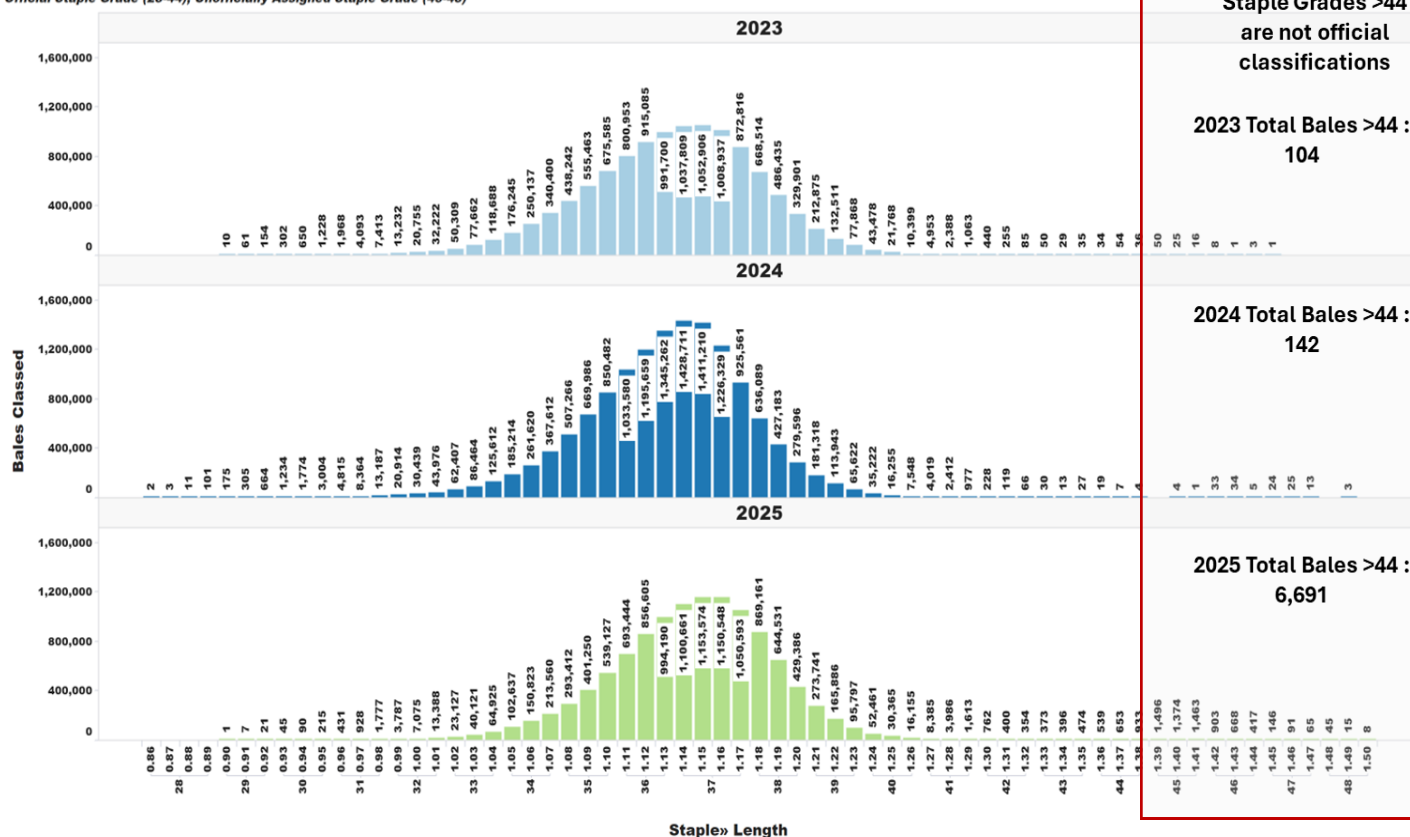
U.S. Upland Cotton Crop Staple Distribution

The official staple lengths for U.S. Upland Cotton, measured in 32nds of an inch, range from "24" to "44 & +". Currently, the longest staple included in the AMS Cotton Market News' weekly quality reports is the "40 & +" designation. Market News is in the process of updating its weekly reports to include all official staple length designations.

For more detailed information, AMS Cotton Market News posts daily per-bale quality data, which includes the instrument measurement for length in inches. You can find this data by office (<https://mymarketnews.ams.usda.gov/viewReport/3471>) and state (<https://mymarketnews.ams.usda.gov/viewReport/3472>). Using this data, Market News has calculated implied staple designations for lengths exceeding 1.35 inches. The accompanying chart shows the number of bales for each staple designation, with staples greater than "44" represented as implied staple lengths. Implied staple lengths are calculated and provided for informational purposes only and are not official designations."

Staple Distribution of U.S. Upland Cotton: 2023-2025 Crops (Classed through Jan. 1, 2025)

Official Staple Grade (28-44), Unofficially Assigned Staple Grade (45-48)



Number of Bales in Certificated Stocks

Delivery Points	Stocks as of 1-8-2026	Awaiting Review	Non-Rain Grown Cotton
Dallas/FT. Worth, TX	5,572	0	0
Galveston, TX	3,655	0	0
Greenville, SC	0	0	0
Houston, TX	190	0	0
Memphis, TN	2,093	0	0
Total	11,510	0	0

World market prices for upland cotton, in cents per pound, in effect from 12:01 a.m., EDT, Friday through midnight, EDT, Thursday

Description	2025-2026					
	Dec	Dec	Dec	Dec	Jan	Jan
	5-11	12-18	19-25	26-01	02-08	09-15
Adjusted world price 1/	51.28	50.39	49.99	50.02	50.76	50.97
Course count adjustment	0.00	0.00	0.00	0.00	0.00	0.00
Loan Deficiency Payment (LDP)	0.72	1.61	2.01	1.98	1.24	1.03
Fine count adjustment 2024	0.00	0.00	0.00	0.00	0.00	0.00
Fine count adjustment 2025	0.00	0.00	0.00	0.00	0.00	0.00

1/ Color 41, leaf 4, staple 34, mike 35-36 & 43-49, strength readings of 26.0-28.9 grams per tex, length uniformity of 80.0-81.9 percent.
Source: Farm Service Agency, USDA.

Description	2024-2025				2025-2026	
	Through January 2, 2025		Through January 1, 2026			
	<u>Week</u>	<u>Mkt. Year</u>	<u>Week</u>	<u>Mkt. Year</u>		
Outstanding sales	-	4,892,700	-	3,611,300		
Exports	191,700	2,859,400	154,000	2,986,300		
Total export commitments	-	7,752,100	-	6,597,600		
New sales	142,800	-	101,000	-		
Buy-backs and cancellations	5,400	-	3,000	-		
Net sales	137,400	-	98,000	-		
Sales next marketing year	5,300	473,200	22,500	497,100		

Net sales of Upland totaling 98,000 RB for 2025/2026 were down 27 percent from the previous week and 49 percent from the prior 4-week average. Increases primarily for Vietnam (38,700 RB, including 2,200 RB switched from China), Pakistan (14,400 RB), Mexico (13,000 RB, including decreases of 300 RB), Turkey (12,700 RB), and China (12,400 RB), were offset by reductions for South Korea (200 RB). Net sales of 22,500 RB for 2026/2027 were reported for Vietnam (15,900 RB) and Turkey (6,600 RB). Exports of 154,000 RB were up 10 percent from the previous week and 18 percent from the prior 4-week average. The destinations were primarily to Vietnam (47,800 RB), Pakistan (28,800 RB), China (19,700 RB), Turkey (14,400 RB), and Indonesia (12,400 RB). Net sales of Pima totaling 4,300 RB for 2025/2026 were up 38 percent from the previous week, but down 37 percent from the prior 4-week average. Increases were primarily for China (1,800 RB), Pakistan (1,000 RB), India (700 RB), Thailand (600 RB), and Turkey (100 RB). Exports of 4,500 RB were down 58 percent from the previous week and 38 percent from the prior 4-week average. The destinations were primarily to China (2,700 RB), Egypt (700 RB), Vietnam (400 RB), Guatemala (300 RB), and India (200 RB).

Exports for Own Account: For 2025/2026, the current exports for own account outstanding balance of 39,400 RB are for India (30,100 RB), Bangladesh (4,400 RB), Vietnam (3,200 RB), and Turkey (1,700 RB).

Source: Export Sales Reporting Division, Foreign Agricultural Service, USDA.
NOTE: Data may not add due to rounding.

January 8, 2026

American Pima Spot Quotations

American Pima quotations are for cotton equal to the Official Standards, net weight, in mixed lots, UD Free, FOB warehouse. 1/

AMERICAN PIMA SPOT QUOTATIONS

Color	Leaf	Staple			
		44	46	48	50
1	1	142.75	148.50	150.25	150.25
	2	142.50	148.25	150.00	150.00
	3	135.75	143.50	144.50	144.50
	4				
	5				
	6				
2	1	142.50	148.25	150.00	150.00
	2	142.25	148.00	149.75	149.75
	3	135.50	143.25	144.25	144.25
	4	125.50	133.75	134.75	134.75
	5				
	6				
3	1	134.25	142.00	143.00	143.00
	2	131.75	139.50	140.50	140.50
	3	129.50	137.25	138.25	138.25
	4	120.50	128.25	129.25	129.25
	5	104.50	111.75	112.75	112.75
	6				
4	1	115.50	123.25	125.00	125.00
	2	115.25	123.00	124.25	124.25
	3	114.00	121.75	122.75	122.75
	4	109.00	116.75	117.75	117.75
	5	97.75	105.50	106.50	106.50
	6				
5	1				
	2	92.25	102.25	102.25	102.25
	3	92.25	101.75	102.00	102.00
	4	92.25	96.25	96.25	96.25
	5	92.00	96.00	96.00	96.00
	6				
6	1				
	2	84.50	87.50	87.50	87.50
	3	84.50	87.50	87.50	87.50
	4	84.50	87.50	87.50	87.50
	5	84.25	87.25	87.25	87.25
	6	83.75	86.75	86.75	86.75

The current Pima spot quotations represent prices from local sales, export sales, and offerings last reported on December 17, 2025

Mike

Range	Diff.
26 & Below	-2000
27-29	-1500
30-32	-1000
33-34	-500
35 & Above	0

Strength

(Grams per Tex)	
Range	Diff.
34.9 & Below	-1650
35.0 – 35.9	-1400
36.0 – 36.9	-1150
37.0 – 37.9	-800
38.0 – 38.9	0
39.0 – 39.9	0
40.0 & Above	0

Extraneous Matter

Type - Level	Diff.
Prep - Level 1	-810
Prep - Level 2	-1095
Other - Level 1	-715
Other - Level 2	-1035
Plastic - Level 1	-4000
Plastic - Level 2	-4000

1/ Pima spot quotations for color-leaf-staple combinations not quoted will be included as sales of those qualities which are reported.

January 8, 2026