



Weekly Cotton Market Review

Agricultural Marketing Service

Cotton and Tobacco Program ♦ Cotton Market News Division ♦ 3275 Appling Road ♦ Memphis, TN 38133 ♦ 901.384.3016

Mp_cn812

Vol. 107 No. 20
December 12, 2025

Inside this Issue

[Market Overview](#)

[Spot Quotations](#)

[ICE Futures](#)

[Southeastern](#)

[Textile Mill Report](#)

[South Central](#)

[Southwestern](#)

[Western](#)

[2025 Crop Update](#)

[Pima Quotations](#)

[Crop Production](#)

[Cotton Ginnings](#)

[Supply and Demand](#)

Featured
[Staple Distribution](#)

[Cotton Market Reports](#)

[Subscribe to this report](#)

[Subscribe to all
Cotton Market reports](#)

Spot quotations averaged 67 points lower than the previous week, according to the USDA, Agricultural Marketing Services Cotton and Tobacco Program. Quotations for the base quality of cotton (color 41, leaf 4, staple 34, mike 35 - 36 and 43-49, strength 27.0 - 28.9, and uniformity 81.0 - 81.9) in the seven designated markets averaged 60.33 cents per pound for the week ending Thursday, December 11, 2025. The weekly average was down from 61.00 cents last week and from 65.33 cents reported in the corresponding period a year ago. Daily average quotations ranged from a low of 60.14 cents on Monday, December 8 to a high of 60.48 cents on Wednesday, December 10. Spot transactions reported in the Daily Spot Cotton Quotations for the week ended December 11 totaled 73,848 bales. This compares to 50,783 reported last week and 42,641 bales reported the corresponding week a year ago. Total spot transactions for the season was 284,064 bales compared to 259,497 the corresponding week a year ago. The ICE March settlement price ended the week at 63.97 cents, compared to 64.08 cents last week.

41-4-34 Prices								
Date	SE	ND	SD	ETX-STX	WTX-KS-OK	DSW	SJV	7-MKT AVG
5-Dec	62.43	61.93	61.93	58.43	58.93	59.43	59.68	60.39
8-Dec	62.18	61.68	61.68	58.18	58.68	59.18	59.43	60.14
9-Dec	62.36	61.86	61.86	58.36	58.86	59.36	59.61	60.32
10-Dec	62.37	61.87	61.87	58.62	59.12	59.62	59.87	60.48
11-Dec	62.22	61.72	61.72	58.47	58.97	59.47	59.72	60.33
31-3-36 Prices								
Date	SE	ND	SD	ETX-STX	WTX-KS-OK	DSW	SJV	7-MKT AVG
5-Dec	68.18	66.68	66.18	65.43	64.18	65.43	72.08	66.88
8-Dec	67.93	66.43	65.93	65.18	63.93	65.18	71.83	66.63
9-Dec	68.11	66.61	66.11	65.36	64.11	65.36	72.01	66.81
10-Dec	68.12	66.62	66.12	65.62	64.37	65.62	72.27	66.96
11-Dec	67.97	66.47	65.97	65.47	64.22	65.47	72.12	66.81
Futures Settlement								Far Eastern A Index 1/
Date	Dec-25	Mar-26	May-26	Jul-26	Oct-26	Dec-26	Current	
5-Dec	62.13	63.93	65.00	66.03	66.83	67.51	74.20	
8-Dec	61.88	63.68	64.76	65.80	66.57	67.40	73.95	
9-Dec	-	63.86	64.92	65.91	66.67	67.53	73.70	
10-Dec	-	64.12	65.17	66.16	66.58	67.68	73.95	
11-Dec	-	63.97	65.05	66.07	66.66	67.61	74.20	
Spot Transactions								
Date	SE	ND	SD	ETX-STX	WTX-KS-OK	DSW	SJV	PIMA
5-Dec	349	249	35	523	11,016	0	0	0
8-Dec	13,501	0	0	880	6,465	0	0	0
9-Dec	542	0	0	1,005	9,168	0	0	0
10-Dec	4,859	4	0	880	10,432	0	0	57
11-Dec	1,477	0	0	1,974	10,432	0	0	0
Weekly Totals	20,728	253	35	5,262	47,513	0	0	57

Source: USDA, AMS, Cotton and Tobacco Program, 1/ Cotlook

Southeastern Markets Regional Summary

Danny Pino ♦ Macon, GA ♦ 478.752.3560 ♦ Danny.Pino@usda.gov

Spot cotton trading was active. Supplies and offerings were moderate. Demand was moderate. Average local spot prices were lower. Trading of CCC-loan equities was inactive. No interest in forward contracting was reported.

Overcast and cloudy conditions early in the period gave way to abundant sunshine later in the week across the lower Southeast. Daytime high temperatures were in the 40s and 50s with nighttime lows dipping into the 30s and 40s. Precipitation fell across the southern Gulf Coast with areas of 2 to 3 inches of moisture received across south Alabama, Georgia and the Florida Panhandle. The moisture brought improvements to droughty conditions, according to the U.S. Drought Monitor. Harvesting and fieldwork was delayed in these areas due to wet conditions. Better than anticipated yields were reported in many fields. Producers welcomed sunny weather later in the week which helped to bleach out and dry, soggy lint. Ginning advanced as backlogs of modules accumulated on gin yards.

Similar weather conditions were observed across the upper Southeast during the period. Mostly cloudy and foggy conditions prevailed over the weekend and early in the week with sunshine returning as the week progressed. Daytime high temperatures were mostly in the 40s and 50s. Nighttime lows were in the 30s.

Scattered showers brought around one to one and one-half inches of beneficial moisture to cotton growing areas of the coastal Carolinas and Virginia. Harvesting and fieldwork was delayed in the wettest areas, but sunny weather later in the week helped soft soils to firm. Ginning continued uninterrupted.

Textile Mill

Domestic mill buyers inquired for a moderate volume of color 41, leaf 4, and staple 34 and longer for first quarter through fourth quarter 2026 delivery. No sales and no additional inquiries were reported. Yarn demand remained moderate and mill buyers maintained a cautious undertone as they balanced raw cotton orders with finished product demand.

Demand through export channels was moderate. Representatives for mills in Costa Rica inquired for a moderate volume of color 31, leaf 3, and staple 36 and longer for October 2026 shipment. Agents for mills in Mexico inquired for a moderate volume of color 41 and 42, leaf 4, and staple 34 and longer for February 2026 delivery.

Trading

- Even-running lots containing color 31 and 41 leaf 3 and 4, staple 37, mike 43-49, strength 28-31, and uniformity 81-83 sold for around 68.50 cents per pound, FOB car/truck (Rule 5, compression charges paid).
- A light volume of color 31 and 41, leaf 2 and 3, staple 35 and 36, mike 37-49, strength 28-31, and uniformity 80-83 sold for around 65.25 cents, same terms as above.
- A moderate volume of color 31 and 41, leaf 3 and 4, staple mostly 34-36, mike 37-52, strength 27-32, and uniformity 80-83 sold for 66.50 to 67.25 cents per pound, FOB car/truck, Georgia terms (Rule 5, compression charges paid, 30 days free storage).
- A heavy volume of color 31 and 41, leaf 3-5, staple 35 and longer, mike 37-49, strength 29-32, and uniformity 80-83 sold for around 65.50 cents, same terms as above.

South Central Markets Regional Summary

Aerielle McDaniel ♦ Memphis, TN ♦ 901.384.3016 ♦ Aerielle.McDaniel@usda.gov

North Delta

Spot cotton trading was active. Supplies and producer offerings were moderate. Demand was light. Average local spot prices were lower. Trading of CCC-loan equities was inactive. Merchants purchased a light volume of cotton forfeited to the CCC-loan. Local experts continued to monitor the price of cotton in hopes of a slight increase.

Partly cloudy skies prevailed throughout most of the reporting period. Daytime highs were in the 30s and 50s. Overnight lows were in the 20s to 30s. Sunshine mid-week warmed high temperatures into the 40s. Occasional light rain showers and chilling wind gust migrated early in the week. Accumulated rainfall totals measured from trace amounts to around one-half of an inch of moisture. According to the U.S. Drought Monitor, drought conditions were rated as abnormal to severe. Field preparations were completed in some places but were reported to be still in progress in other areas. Larger gins are estimating to be done by the end of January. Gins continued to push bales out to warehouses for storage. A majority of the smaller gins in Arkansas, Missouri, and Tennessee are finished. Virtual and in-person industry meetings were being planned.

South Delta

Spot cotton trading was slow. Supplies and producer offerings were light. Demand was very light. Average local spot prices were lower. Trading of CCC-loan equities was inactive. Business continued to fluctuate with the trend of the market. Local experts continued to monitor the price of cotton in hopes of a slight increase.

Cloudy skies with wintry wind gusts characterized the weather pattern during the reporting period. Daytime high temperatures were in the 30s to 50s. Abundant sunshine mid-week warmed highs into the 60s. Overnight low temperatures were in the low 30s and 40s. Light and steady afternoon rain showers brought around one-half of an inch of rain. Fieldwork is complete. Drought activity was reported to be mostly ranging from abnormal to severe. Meetings were held and attended to discuss pre-season fieldwork and how to prevent nutrient depletion in the cotton crop during the season. Most of ginning operations were complete. Virtual and in-person industry meetings were being planned.

Trading

North Delta

- A light volume lot containing color 31, leaf 3, staple 34-38, mike averaging 44.9, strength averaging 31.1, and uniformity averaging 81.9 sold for around 66.50 cents per pound, FOB car/truck, (Rule 5, compression charges paid).
- A mixed lot of old-crop cotton containing color 52 and better, leaf 1-5, staple 34-38, mike 30-49, strength 29-32, and uniformity 80-83 sold for around 59.25 cents, same terms as above.
- A light volume of 2024-crop CCC-catalog cotton, color 31 and 41, leaf 2-4, staple 36-38, mike 42-50, strength averaging 28.5, uniformity averaging 81.5, and 75 percent extraneous matter (plastic) sold for around 30.33 cents per pound, FOB warehouse (compression charges not paid).

South Delta

- A light volume old-crop cotton lot containing mostly color 51 and better, leaf 3 and 4, staple 34, mike 43-49, strength 27-29, and uniformity 79-81 sold for around 59.25 cents per pound, (Rule 5, compression charges paid).

Southwestern Markets Regional Summary

Bethany Lindgren ♦ Memphis, TN ♦ 901.384.3016 ♦ Bethany.Lindgren@usda.gov
Jane Byers-Angle ♦ Lubbock, TX ♦ 806.283.9389 ♦ Jane.Byers-Angle@usda.gov

East Texas-South Texas

Spot cotton trading was moderate. Supplies and producer offerings were moderate. Demand was light. Average local spot prices were lower. Producer interest in forward contracting was light. Trading of CCC-loan equities was inactive. Foreign mill inquiries were moderate. Interest was best from India, Pakistan, Turkey, and Vietnam.

Dry, breezy, and partly cloudy conditions dominated the weather pattern in East Texas during the period. Afternoon high temperatures edged upward into the upper 50s to the 70s, with overnight temperatures holding steady in the 30s to the 50s. In the Blackland Prairies and along the Brazos River Bottoms, ginning season was drawing to an end. Sunny skies and mild temperatures settled into the South Texas territory during the period. Daily high temperatures were in the 60s and 70s, with areas of the lower Rio Grande Valley climbing into the 80s. Nighttime temperatures were in the 40s to the 60s. Isolated showers brought rainfall amounts reported at roughly one-quarter of an inch of rain, but chances for additional precipitation remained in the forecast and would be welcomed to ease drought in dry areas. Approximately six gins are still in operation and delivering cotton samples for grading services to the Corpus Christi Classing Office. More gins are expected to conclude operations through the middle of December. A small number of gins were still running two shifts, and one gin was running a 24-hour shift, anticipating pressing services to continue into January. According to the most recent Daily Cotton Quality Summary by Office, the Corpus Christi Classing Office has classed a total of 1,473,002 bales according to the December 12, 2025, report.

West Texas-Kansas-Oklahoma

Spot cotton trading was active. Supplies and producer offerings were heavy. Demand was moderate. Average local spot prices were lower. Forward contracting was completed for the season. Trading of CCC-loan equities was active. Foreign mill inquiries were moderate. Interest was best from India, Pakistan, Turkey, and Vietnam.

Unseasonably warm, dry conditions persisted across West Texas. Two weak cool fronts moved through the region, with another expected over the weekend. Daytime highs ranged from the 50s to the 70s, while overnight lows dipped into the 20s and 40s. Intermittent wind gusts caused brief harvest delays, but overall activity continued to advance and moved closer to completion, except in the Rolling Plains where harvesting activities expanded following a recent hard freeze. Modules were hauled from fields to gin yards, and bales were trucked from gins to warehouses for storage and marketing. Gins pressed bales on extended schedules, with steady rhythm carrying into the night. Since most of the crop was gathered, attention shifted to winter field preparations, and industry members participated in end-of-year meetings that marked the close of another year.

Daytime temperatures across Kansas swung from the low 30s into the low 60s, with nights dipping into the 20s and 30s. A series of dry cold fronts brought brief cool-downs and occasional gusty winds, yet harvest continued to advance steadily. As fields dried, producers made solid progress, and ginning operations maintained a consistent pace. Although the crop quality showed some impact from early-November rainfall, the industry remained optimistic because of the season's excellent yields. In southwestern Oklahoma, daytime highs ranged from the upper 40s to the mid-60s, while overnight lows settled into the 20s and 30s. The dry weather pattern allowed harvesting to push into the evenings and move steadily toward completion. Most of the crop has been placed in modules and transported to gin yards. Ginning operations continued at a steady pace, with many facilities running multiple shifts to keep up with the flow.

Southwestern Markets Regional Summary

Bethany Lindgren ♦ Memphis, TN ♦ 901.384.3016 ♦ Bethany.Lindgren@usda.gov

Jane Byers-Angle ♦ Lubbock, TX ♦ 806.698.4648 ♦ Jane.Byers-Angle@usda.gov

Trading

East Texas/South Texas

- Mixed lots containing a heavy volume of color 21 and 31, leaf 1-3, staple 37-39, mike 39-50, strength 29-36, and uniformity 79-83 sold for 63.75 to 64.50 cents per pound, FOB warehouse (compression charges not paid).
- A lot containing a moderate volume of color 41 and better, leaf 2 and 3, staple 35-37, mike averaging 43.9, strength averaging 29.2, and uniformity averaging 81.6 sold for 61.25 cents, same terms as above.
- A lot containing a moderate volume of color 42 and better, leaf 3-5, staple 37 and 38, mike averaging 43.5, strength averaging 31.2, and uniformity averaging 82.4 sold for around 300 points off ICE March futures, same terms as above.

West Texas, Kansas, & Oklahoma

- In Texas, even-running lots containing a heavy volume of color 11 and 21, leaf 3 and better, staple 36-40, mike 33-49, strength 30-37, and uniformity 79-84 sold for 64.00 to 64.75 cents per pound, FOB car/truck, (compression charges not paid).
- Lots containing a heavy volume of color 31 and better, leaf 3 and better, staple 35-37, mike 35-42, strength 29-32, and uniformity 79-82 sold for 60.00 to 62.00 cents, same terms as above.
- In Kansas, lots containing a moderate volume of mostly color 32 and better, leaf 2-4, staple 35-37, mike 30-46, strength 29-33, and uniformity 77-81 sold for 56.00 to 61.00 cents, same terms as above.
- A light volume of mixed lots containing color 43 and better, leaf 3-6, staple 37-39, mike 30-39, strength 31-35, uniformity 79-83, and 75 percent extraneous matter sold for 52.25 to 52.50 cents, same terms as above.
- In Oklahoma, lots containing a heavy volume of color 31 and better, leaf 2-4, staple 39-41, mike 34-44, strength 32-36, and uniformity 80-85 sold for 65.00 to 65.50 cents, same terms as above.
- Mixed lots containing a heavy volume of color 41 and better, leaf 5 and better, staple 35-40, mike 36-45, strength 30-35, and uniformity 79-83 sold for 62.50 to 63.50 cents, same terms as above.
- A light volume of CCC-loan equities sold for 2.50 to 6.00 cents.

Western Markets Regional Summary

Veronica Williamson ♦ Florence, SC ♦ 843.667.4381 ♦ Veronica.Williamson@usda.gov

Desert Southwest (DSW)

Spot cotton trading was slow. Supplies and producer offerings were light. Demand was light. Producer interest in forward contracting was light. Average local prices were lower. No Forward contracting or domestic mill activity was reported. Foreign mill inquiries were light.

In Arizona, clear and sunny skies were dominate throughout the period. Daily temperatures reached near record highs in the upper 70s and almost 80s in some locales. Nighttime temperatures were in the 30s and 40s. No rain was reported during the period. In Yuma, gins finished for the season. Growers stated that they noticed some quality issues, which may be attributed to late-season rains, but yields were average. In Central Arizona, the crop is progressing well, with about half of the fields picked. Producers are reporting yields at or above average, a welcome outcome after years of variability. In Safford, 75 percent of the crop has been picked, but yields have been reported below average, due to water shortages and persistent heat stress during the growing season. In El Paso and New Mexico, weather conditions were mostly sunny. Daytime temperatures were above average, reaching into the upper 60s to low 70s. Nightly lows were in the 30s and 40s. No rain was recorded during the period. Harvesting activities in the area were virtually completed. Some gins in the area reported that they anticipate finishing operations by Christmas.

San Joaquin Valley (SJV)

Spot cotton trading was inactive. Supplies and demand were light. No forward contracting or domestic mill activity was reported. Average local prices were lower. Foreign mill inquiries were light.

Weather conditions in the San Joaquin Valley consisted of foggy mornings that gave way to cloudy

skies most of the period. Cooler temperatures were the norm during the period with daily temperatures in the mid-to-upper 40s, which is below average for this time of year. Nighttime lows were in the 30s and 40s. Chances for rain showers are in the nearby forecast. Fieldwork was completed for the winter season. The Sierra Nevada snowpack stood at just 24 percent of normal as of December 9, and 4 percent of the April 1 average. With reservoirs and irrigation systems heavily dependent on winter storms, growers are hoping for a series of strong weather events to replenish supplies.

American Pima (AP)

Spot cotton trading was inactive. Supplies were moderate. Demand was light. No forward contracting or domestic mill activity was reported. Average local spot prices were steady. Foreign mill inquiries were light.

In the San Joaquin Valley, foggy mornings gave way to cloudy skies. Cooler temperatures were the norm during the period with daily temperatures in the mid-to-upper 40s, which is below average for this time of year. Nighttime lows were in the 30s and 40s. Chances for rain showers are in the nearby forecast. Fieldwork for winter crops was complete. Ginning continued. The Sierra Nevada snowpack stood at just 24 percent of normal as of December 9, and 4 percent of the April 1 average. In the DSW, clear and sunny skies were dominate throughout the period. Daily temperatures reached near record highs in the upper 70s and almost 80s in some locales. Nighttime temperatures were in the 30s and 40s. No rain was reported during the period. Harvest activities continue in some areas while others have wrapped up for the season. Ginning operations continued. The Visalia Classing Office classed 229,080 bales of Pima as of December 11.

Trading

Desert Southwest

- No trading activity was reported.

San Joaquin Valley

- No trading activity was reported.

American Pima

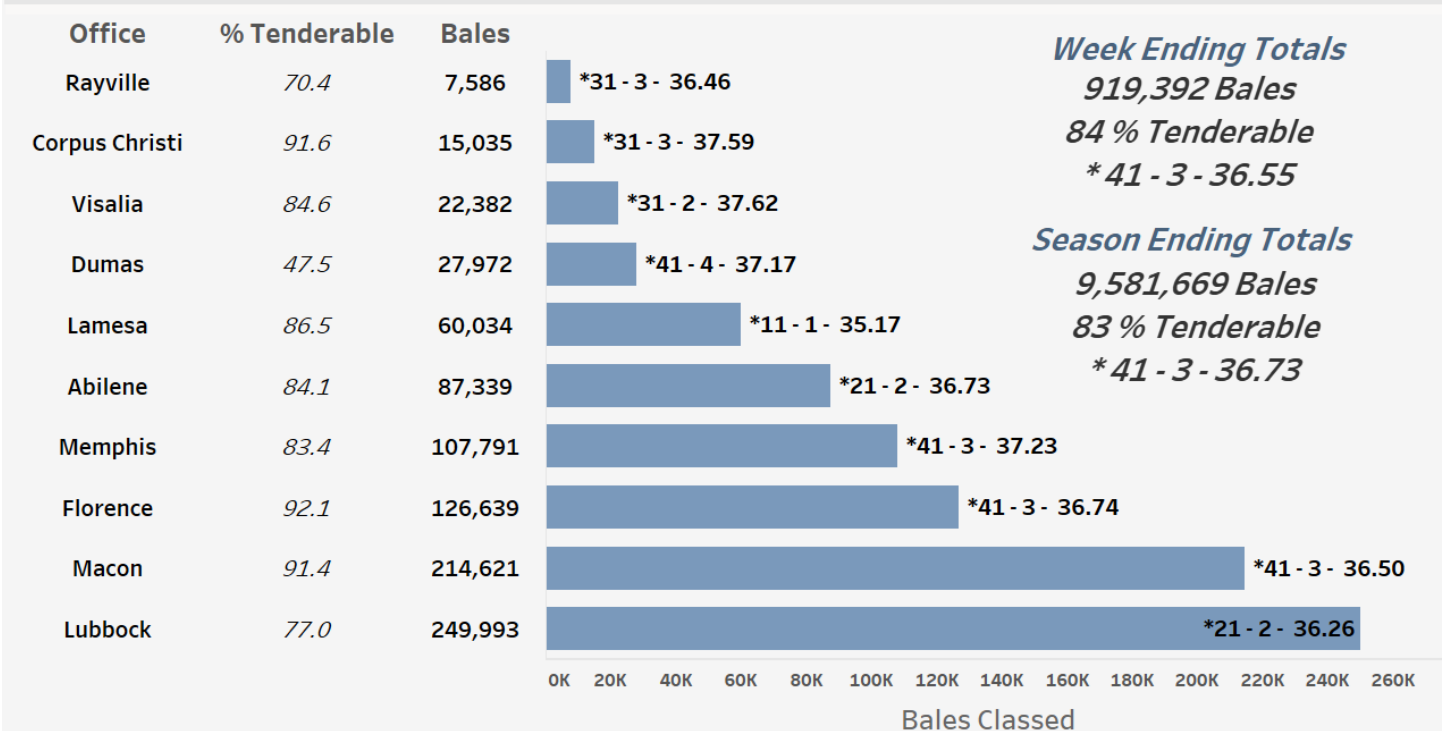
- A light volume of CCC-Catalog cotton mostly color 2 and 3, leaf 1-3, staple 44-50, sold for 76.00 to 78.00 cents per pound, FOB warehouse (compression charges not paid).

Cotton Bales Classed by Office

For the week ending December 11, 919,392 bales were classed. All offices are classing cotton. Quality data across all offices for the week was 32.2 percent for color 41, 40.2 percent for leaf 3, staple averaging 36.55, mike averaging 4.29, strength averaging 30.91, and uniformity averaging 81.54. For the entire U.S. upland crop, total classed during the season was 9,581,669 bales.

Bales of Upland Cotton Classed by Office, Week Ending Dec. 11, 2025

*** Predominate Color - Predominate Leaf - Avg. Staple**



USDA, AMS, Cotton and Tobacco Program, Market News, *Data Source: USDA Cotton Quality Data*

[For complete report click here.](#)

U.S. Upland Cotton Crop Staple Distribution

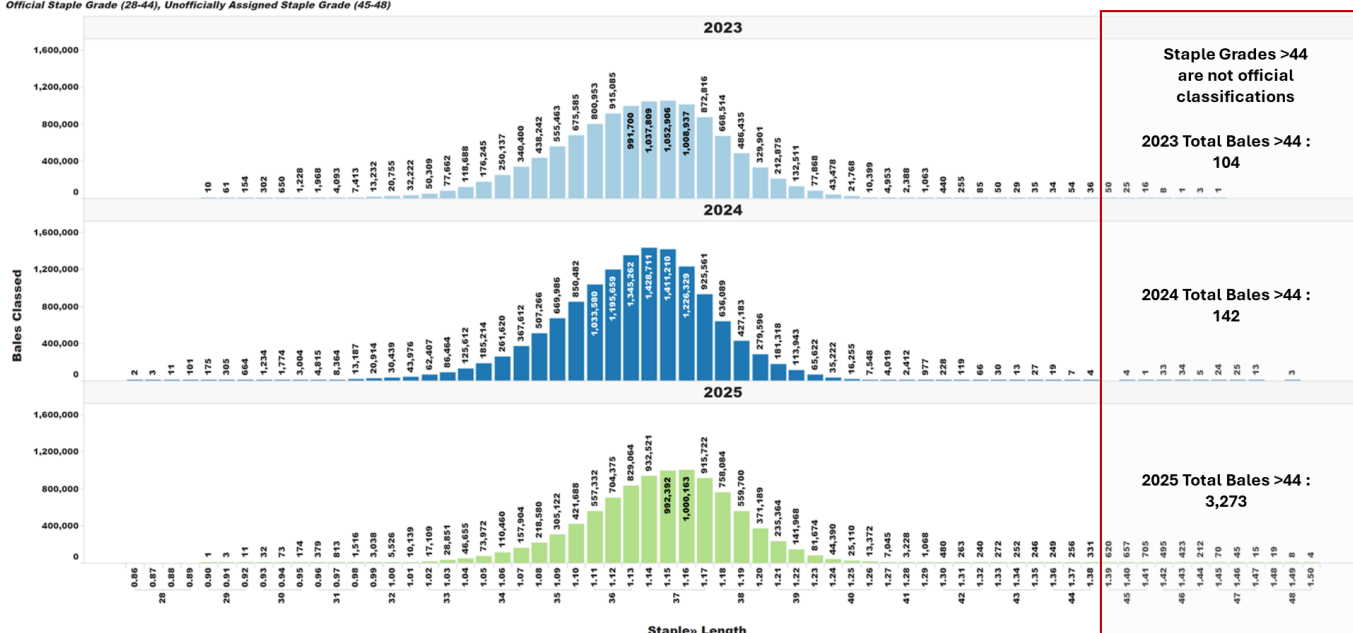
The official staple lengths for U.S. Upland Cotton, measured in 32nds of an inch, range from "24" to "44 & +". Currently, the longest staple included in the AMS Cotton Market News' weekly quality reports is the "40 & +" designation. Market News is in the process of updating its weekly reports to include all official staple length designations.

For more detailed information, AMS Cotton Market News posts daily per-bale quality data, which includes the instrument measurement for length in inches. You can find this data by office

(<https://mymarketnews.ams.usda.gov/viewReport/3471>) and state (<https://mymarketnews.ams.usda.gov/viewReport/3472>). Using this data, Market News has calculated implied staple designations for lengths exceeding 1.35 inches. The accompanying chart shows the number of bales for each staple designation, with staples greater than "44" represented as implied staple lengths. Implied staple lengths are calculated and provided for informational purposes only and are not official designations."

Staple Distribution of U.S. Upland Cotton: 2023-2025 Crops (Classed through Dec. 11, 2025)

Official Staple Grade (28-44), Unofficially Assigned Staple Grade (45-48)



USDA, AMS, Cotton and Tobacco Program, Market News, *Data Source: USDA Cotton Quality Data*

[For complete report click here.](#)

Crop Production

All cotton production is forecast at 14.3 million 480-pound bales, up 1 percent from the previous forecast but down 1 percent from 2024. Based on conditions as of December 1, yields are expected to average 929 pounds per harvested acre, up 10 pounds from the previous forecast and up 43 pounds from 2024. Upland cotton production is forecast at 13.9 million 480-pound bales, up 1 percent from the previous forecast but down less than 1 percent from 2024. Pima cotton production is forecast at 378,000 bales, down 1 percent from the previous forecast and down 20 percent from 2024.

Cotton Area Harvested, Yield, and Production by Type – States and United States: 2024 and Forecasted December 1, 2025

Type and State	Area harvested		Yield per acre			Production ¹	
	2024	2025	2024	2025		2024	2025
	(1,000 acres)	(1,000 acres)	(pounds)	November 1 (pounds)	December 1 (pounds)	(1,000 bales) ²	(1,000 bales) ²
Upland							
Alabama	396.0	285.0	816	943	1,011	673.0	600.0
Arizona	95.0	89.0	1,299	1,240	1,294	257.0	240.0
Arkansas	640.0	515.0	1,341	1,491	1,538	1,788.0	1,650.0
California	20.7	17.7	1,739	1,492	1,763	75.0	65.0
Florida	82.0	60.0	697	800	960	119.0	120.0
Georgia	1,080.0	830.0	858	983	1,012	1,930.0	1,750.0
Kansas	124.0	85.0	778	847	847	201.0	150.0
Louisiana	148.0	84.0	1,070	1,314	1,486	330.0	260.0
Mississippi	515.0	325.0	1,157	1,182	1,329	1,241.0	900.0
Missouri	380.0	340.0	1,320	1,384	1,313	1,045.0	930.0
 New Mexico	 28.0	 20.0	 703	 1,200	 720	 41.0	 30.0
North Carolina	400.0	275.0	942	995	1,152	785.0	660.0
Oklahoma	185.0	275.0	701	820	785	270.0	450.0
South Carolina	221.0	167.0	860	891	977	396.0	340.0
Tennessee	250.0	190.0	1,052	1,213	1,440	548.0	570.0
Texas	2,950.0	3,600.0	656	707	667	4,030.0	5,000.0
Virginia	90.0	72.0	1,136	1,000	1,167	213.0	175.0
 United States	 7,604.7	 7,229.7	 880	 912	 922	 13,942.0	 13,890.0
American Pima							
Arizona	14.0	15.5	1,029	929	1,053	30.0	34.0
California	142.0	91.0	1,237	1,582	1,582	366.0	300.0
New Mexico	14.5	12.7	794	756	529	24.0	14.0
Texas	30.0	20.0	816	720	720	51.0	30.0
 United States	 200.5	 139.2	 1,128	 1,310	 1,303	 471.0	 378.0
All							
Alabama	396.0	285.0	816	943	1,011	673.0	600.0
Arizona	109.0	104.5	1,264	1,194	1,259	287.0	274.0
Arkansas	640.0	515.0	1,341	1,491	1,538	1,788.0	1,650.0
California	162.7	108.7	1,301	1,568	1,612	441.0	365.0
Florida	82.0	60.0	697	800	960	119.0	120.0
Georgia	1,080.0	830.0	858	983	1,012	1,930.0	1,750.0
Kansas	124.0	85.0	778	847	847	201.0	150.0
Louisiana	148.0	84.0	1,070	1,314	1,486	330.0	260.0
Mississippi	515.0	325.0	1,157	1,182	1,329	1,241.0	900.0
Missouri	380.0	340.0	1,320	1,384	1,313	1,045.0	930.0
 New Mexico	 42.5	 32.7	 734	 1,028	 646	 65.0	 44.0
North Carolina	400.0	275.0	942	995	1,152	785.0	660.0
Oklahoma	185.0	275.0	701	820	785	270.0	450.0
South Carolina	221.0	167.0	860	891	977	396.0	340.0
Tennessee	250.0	190.0	1,052	1,213	1,440	548.0	570.0
Texas	2,980.0	3,620.0	657	707	667	4,081.0	5,030.0
Virginia	90.0	72.0	1,136	1,000	1,167	213.0	175.0
 United States	 7,805.2	 7,368.9	 886	 919	 929	 14,413.0	 14,268.0

¹ Production ginned and to be ginned.

² 480-pound net weight bale.

The complete report can be found at: [Crop Production](#)

Running Bales Ginned by Crop – States and United States: December 1, 2022-2025

[Excluding linters]

Crop and State	Running bales ginned			
	2022 Crop	2023 Crop	2024 Crop	2025 Crop
	December 1, 2022	December 1, 2023	December 1, 2024	December 1, 2025
	(number)	(number)	(number)	(number)
Upland				
Alabama	532,700	469,900	479,100	404,450
Arizona	(D)	(D)	(D)	(D)
Arkansas	1,123,050	1,231,600	1,412,100	1,110,600
California	33,850	27,850	27,850	35,850
Florida	72,350	68,400	76,700	60,450
Georgia	1,456,800	1,122,500	1,005,200	961,300
Kansas	70,600	(D)	82,300	28,250
Louisiana	348,200	204,500	310,050	213,700
Mississippi	1,024,900	790,950	1,067,450	687,400
Missouri	460,900	576,600	676,100	522,300
 New Mexico	(D)	(D)	(D)	(D)
North Carolina	689,450	544,800	523,100	485,800
Oklahoma	75,150	98,300	103,400	180,150
South Carolina	237,300	176,050	195,500	133,700
Tennessee	522,600	525,650	496,600	351,950
Texas	2,172,500	2,135,100	2,779,000	3,113,150
Virginia	134,900	102,700	123,700	109,300
 United States	9,053,000	8,228,200	9,442,150	8,462,400
American Pima				
Arizona	(D)	(D)	(D)	(D)
California	186,550	125,000	160,900	156,700
New Mexico	(D)	(D)	(D)	(D)
Texas	9,600	12,550	13,200	12,250
 United States	218,400	155,850	189,600	182,750
All				
Alabama	532,700	469,900	479,100	404,450
Arizona	94,950	82,900	76,850	65,600
Arkansas	1,123,050	1,231,600	1,412,100	1,110,600
California	220,400	152,850	188,750	192,550
Florida	72,350	68,400	76,700	60,450
Georgia	1,456,800	1,122,500	1,005,200	961,300
Kansas	70,600	(D)	82,300	28,250
Louisiana	348,200	204,500	310,050	213,700
Mississippi	1,024,900	790,950	1,067,450	687,400
Missouri	460,900	576,600	676,100	522,300
 New Mexico	25,050	(D)	22,650	12,250
North Carolina	689,450	544,800	523,100	485,800
Oklahoma	75,150	98,300	103,400	180,150
South Carolina	237,300	176,050	195,500	133,700
Tennessee	522,600	525,650	496,600	351,950
Texas	2,182,100	2,147,650	2,792,200	3,125,400
Virginia	134,900	102,700	123,700	109,300
 United States	9,271,400	8,384,050	9,631,750	8,645,150

(D) Withheld to avoid disclosing data for individual operations.

The complete report can be found at: [Cotton Ginnings](#)

Supply and Demand

The following information was excerpted from the World Agricultural Supply and Demand Estimates, released on December 9, 2025

This month's 2025/26 U.S. cotton balance sheet shows slightly higher production, a reduction in mill use, and larger ending stocks compared to November. Beginning stocks, exports, and imports are unchanged. Production is increased 1 percent to 14.3 million bales as yields are raised for most States in the Southeast and Delta. As a result, the national average yield is 10 pounds higher at 929 pounds per acre. Mill use is reduced by 100,000 bales to 1.6 million, the lowest in almost 150 years. Ending stocks are now projected at 4.5 million bales, or 32.6 percent of disappearance. The projected season average farm price is reduced to 60 cents per pound, a decline of 3 cents from last year and 31 cents since 2021/22.

U.S. Cotton Supply and Use 1/

	2023/24	2024/25 Est.	2025/26 Proj. Nov	2025/26 Proj. Dec
Area				
Planted	10.23	11.18	9.30	9.30
Harvested	6.44	7.81	7.37	7.37
Yield per Harvested Acre	899	886	919	929
Beginning Stocks	4.65	3.15	4.00	4.00
Production	12.07	14.41	14.12	14.27
Imports	0.00	0.00	0.01	0.01
Supply, Total	16.72	17.57	18.12	18.27
Domestic Use	1.85	1.70	1.70	1.60
Exports, Total	11.75	11.90	12.20	12.20
Use, Total	13.60	13.60	13.90	13.80
Unaccounted 2/	-0.03	-0.03	-0.08	-0.03
Ending Stocks	3.15	4.00	4.30	4.50
Avg. Farm Price 3/	76.1	63.0	62.0	60.0

Note: Reliability calculations at end of report. 1/ Upland and extra-long staple; marketing year beginning August 1. Totals may not add due to rounding. 2/ Reflects the difference between the previous season's supply less total use and ending stocks. 3/ Cents per pound for upland cotton.

The complete report can be found at: [Supply and Demand](#)

Number of Bales in Certificated Stocks

Delivery Points	Stocks as of 12-11-2025	Awaiting Review	Non-Rain Grown Cotton
Dallas/FT. Worth, TX	7,955	0	0
Galveston, TX	3,655	0	0
Greenville, SC	0	0	0
Houston, TX	268	0	0
Memphis, TN	2,093	0	0
Total	13,971	0	0

World market prices for upland cotton, in cents per pound, in effect from 12:01 a.m., EDT, Friday through midnight, EDT, Thursday

Description	2025-2026					
	Nov	Nov	Nov	Nov 28	Dec	Dec
	7-13	14-20	21-27	Dec 4	5-11	12-18
Adjusted world price 1/	0.00	51.83	50.80	50.77	51.28	50.39
Course count adjustment	0.00	0.00	0.00	0.00	0.00	0.00
Loan Deficiency Payment (LDP)	0.00	0.17	1.20	1.23	0.72	1.61
Fine count adjustment 2024	0.00	0.16	0.00	0.00	0.00	0.00
Fine count adjustment 2025	0.00	0.16	0.00	0.00	0.00	0.00

1/ Color 41, leaf 4, staple 34, mike 35-36 & 43-49, strength readings of 26.0-28.9 grams per tex, length uniformity of 80.0-81.9 percent.

Source: Farm Service Agency, USDA.

Description	2024-2025				2025-2026	
	Through November 14, 2024		Through November 13, 2025			
	<u>Week</u>	<u>Mkt. Year</u>	<u>Week</u>	<u>Mkt. Year</u>		
Outstanding sales	-	4,506,600	-	3,374,900		
Exports	148,200	1,857,600	113,200	2,065,800		
Total export commitments	-	6,364,200	-	5,440,700		
New sales	319,100	-	198,000	-		
Buy-backs and cancellations	600	-	10,400	-		
Net sales	318,500	-	187,600	-		
Sales next marketing year	16,000	428,300	1,800	448,600		

American Pima Spot Quotations

American Pima quotations are for cotton equal to the Official Standards, net weight, in mixed lots, UD Free, FOB warehouse. 1/

AMERICAN PIMA SPOT QUOTATIONS					
Color	Leaf	Staple			
		44	46	48	50
1	1	145.75	151.50	153.25	153.25
	2	145.50	151.25	153.00	153.00
	3	138.75	146.50	147.50	147.50
	4				
	5				
	6				
2	1	145.50	151.25	153.00	153.00
	2	145.25	151.00	152.75	152.75
	3	138.50	146.25	147.25	147.25
	4	128.50	136.75	137.75	137.75
	5				
	6				
3	1	137.25	145.00	146.00	146.00
	2	134.75	142.50	143.50	143.50
	3	132.50	140.25	141.25	141.25
	4	123.50	131.25	132.25	132.25
	5	107.50	114.75	115.75	115.75
	6				
4	1	118.50	126.25	128.00	128.00
	2	118.25	126.00	127.25	127.25
	3	117.00	124.75	125.75	125.75
	4	112.00	119.75	120.75	120.75
	5	100.75	108.50	109.50	109.50
	6				
5	1				
	2	95.25	105.25	105.25	105.25
	3	95.25	104.75	105.00	105.00
	4	95.25	99.25	99.25	99.25
	5	95.00	99.00	99.00	99.00
	6				
6	1				
	2	87.50	90.50	90.50	90.50
	3	87.50	90.50	90.50	90.50
	4	87.50	90.50	90.50	90.50
	5	87.25	90.25	90.25	90.25
	6	86.75	89.75	89.75	89.75

The current Pima spot quotations represent prices from local sales, export sales, and offerings last reported on July 23, 2025

Mike

Range	Diff.
26 & Below	-2000
27-29	-1500
30-32	-1000
33-34	-500
35 & Above	0

Strength

(Grams per Tex)

Range	Diff.
34.9 & Below	-1650
35.0 – 35.9	-1400
36.0 – 36.9	-1150
37.0 – 37.9	-800
38.0 – 38.9	0
39.0 – 39.9	0
40.0 & Above	0

Extraneous Matter

Type - Level	Diff.
Prep - Level 1	-810
Prep - Level 2	-1095
Other - Level 1	-715
Other - Level 2	-1035
Plastic - Level 1	-4000
Plastic - Level 2	-4000

1/ Pima spot quotations for color-leaf-staple combinations not quoted will be included as sales of those qualities which are reported.

December 11, 2025