

# NATIONAL WEEKLY FEEDER & STOCKER CATTLE SUMMARY

St. Joseph, Missouri

Monday, December 1, 2025

# USDA LIVESTOCK, POULTRY & GRAIN MARKET NEWS

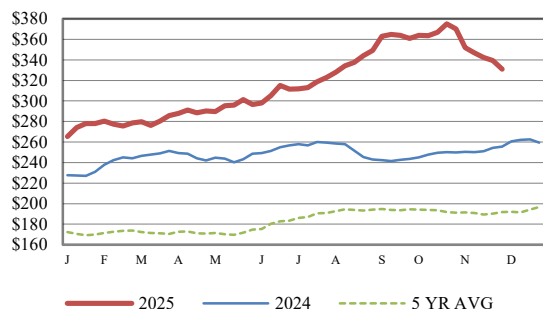
for w/e Saturday, 11/29/25.

Email: [stjoe.lpgmn@usda.gov](mailto:stjoe.lpgmn@usda.gov)

Receipts:	This Week	Last Week	Year Ago
<a href="#">SJ LS850</a>	59,200	282,500	78,900

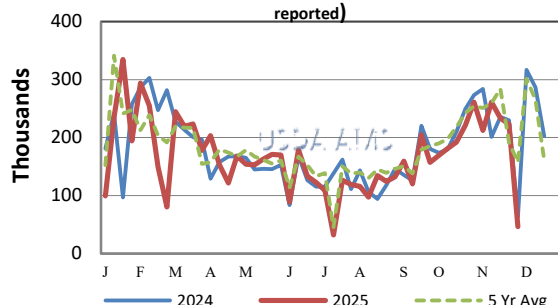
Compared to last week, steers and heifers were too thinly tested to establish a trend, however a lower undertone was noted at early week sales and higher at later week sales. Marketing of feeder cattle were limited to the Midwest and Upper Plains states this week as the supply of feeders was light. However, most sale barns remained dark this week for the holiday and receipts were moderate to heavy in the barns that held sales; most of which were advertised as a special sale in some way or another and occurred mostly on Monday and Tuesday, while the rest were on Friday and Saturday. Demand ranged from moderate to very good as limited auctions happened Thanksgiving week. This week kind of marks when the weaned calves over 45 days start to show up at the auctions. Both auctions reported quite a few buyers on the seats and hitting the internet. Overall, the calf and feeder market continues to sell dollars higher than the same time last year putting more cash into the sellers' pockets. Negotiated feedlot sales happened on Tuesday in Nebraska and Texas when the CME cattle boards were selling off and sellers in the cash market are hoping for shackle space at area slaughterhouses. Sharp gains on all CME contracts Wednesday and Friday of last week were a welcome sight to ranchers getting ready to sell calves. For the week, spring Feeder Cattle futures were 10.80.00 to 11.275 higher for the holiday shortened week. With the Monday sharp sell off on the CME, it brought sharp price decline to cash prices. However, on Friday, some sales in the South Plains were sharply higher than on Tuesday. For the week, negotiated sales of fed cattle in TX/OK/NM sold 4.00 to 9.00 lower at 215.00 to 220.00. Sales in Kansas sold 2.00 to 4.00 lower at mostly 220.00. In Nebraska, live sales were 8.00 lower from 208.00 to 210.00, mostly 210.00.00; while dressed sales were 10.00 to 15.00 lower at 330.00. Replacement cattle have been met with good to very good demand in recent weeks and there are several special bred cow sales scheduled between now and the first of the year. On Saturday, Eastern Missouri Commission Company had a special replacement sale on Saturday where the top lots of fancy bred heifers sold from 5500.00 to 5900.00 per head. Choice closed on Friday at 366.82, 4.66 lower and Select closed at 351.05, 5.93 lower when compared to last week. Weekly Cattle Slaughter under federal inspection estimated at [More.....](#)

CME FEEDER CATTLE INDEX (\$/CWT)



NATIONWIDE REPORTED WEEKLY FEEDER CATTLE AUCTION RECEIPTS

(Receipts vary depending on the number of auctions reported)



## REGIONAL WEIGHTED AVERAGE

### FEEDER STEER PRICES

#### NORTH CENTRAL REGION

Steers:	This Week	Last Week	Last Year
600-700 lbs	\$397.90	\$386.43	\$301.99
700-800 lbs	\$344.72	\$354.12	\$276.60
800-900 lbs	\$318.11	\$330.40	\$253.08

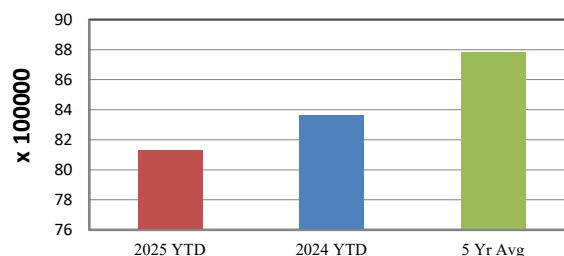
#### SOUTH CENTRAL REGION

Steers:	This Week	Last Week	Last Year
500-600 lbs	\$380.45	\$395.13	\$312.09
600-700 lbs	\$347.68	\$360.59	\$279.61
700-800 lbs	\$326.09	\$341.29	\$260.02

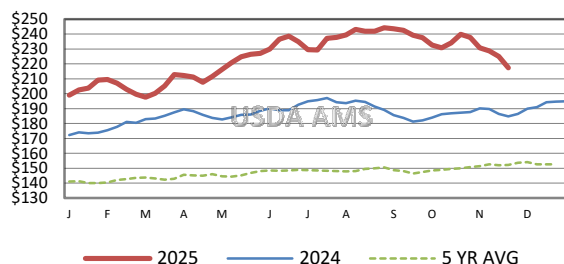
#### SOUTHEAST REGION

Steers:	This Week	Last Week	Last Year
400-500 lbs	\$360.45	\$412.79	\$298.16
500-600 lbs	\$337.13	\$374.26	\$276.65
600-700 lbs	\$317.60	\$338.76	\$246.07

YEAR TO DATE AUCTION RECEIPTS



5 AREA WEEKLY WEIGHTED AVERAGE SLTR STEER PRICE (\$/CWT)



## USDA Livestock, Poultry, & Grain Market News

St. Joseph, Missouri

Phone: 816-676-7000



For detailed state-by-state feeder cattle quotes:

[National Feeder & Stocker Cattle Summary](#)

<http://www.ams.usda.gov/LSMarketNews>