

NATIONAL WEEKLY FEEDER & STOCKER CATTLE SUMMARY

St. Joseph, Missouri

Monday, November 24, 2025

USDA LIVESTOCK, POULTRY & GRAIN MARKET NEWS

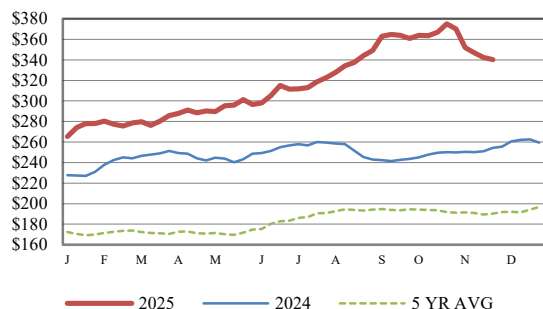
for w/e Saturday, 11/22/25.

Email: stjoe.lpgmn@usda.gov

Receipts:	This Week	Last Week	Year Ago
SJ LS850	282,500	274,400	278,800

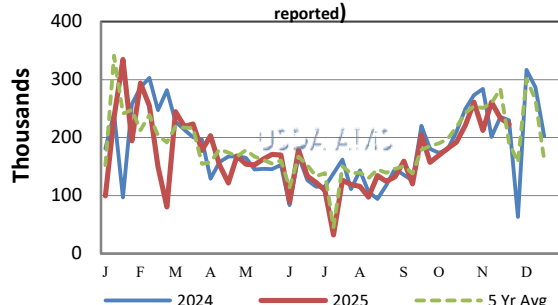
Compared to last week, steers and heifers sold lower, just depended on what area you were in this week. In the Southeast and Southern Plains, steers and heifers were steady to 10.00 lower and in the North Plains the call would be 10.00 to 20.00 lower. Demand was moderate to good as buyers seemed to be ready to move on to Turkey Day and let the cowboys at the yard catch up a bit on doctoring calves they've received in the last couple weeks. The wild moves in the cattle futures complex is making it very difficult for cattle producers to make any marketing decisions that make sense. A decent pre-holiday week supply of feeders around the auctions around the country this week. The monthly cattle on feed report was released on Friday along with some of the data that was missed in the Oct. report. The November 1 On Feed number was reported at 98 pct; Placements at 90 pct and Marketings at 92 pct. Numbers were within pre-report estimates with maybe an ever so slight lean towards being bullish. The number of steers and heifers on feed was caught up from the missing report last month and showed heifers at 38 pct of the total on feed numbers which many expected to be smaller and reflective of maybe a bit more retention and growth. The report was likely overshadowed by a couple other headlines; removal of some beef tariffs and the upcoming closing of a major packing plant in Nebraska. Although supplies of cattle for slaughter are historically low, and chain speeds have been kept slow for a while now any time shackle space is lost it is very negative. The industry had expected news like this to come eventually from one of the major four, but didn't know when/if it would come to fruition sooner or later. Cattle feeders faced much lower packer bids this week, with sales in all major feeding regions reporting lower prices, which is causing them to rethink their approach to entering the feeder cattle market. The optimism that was rampant throughout the entire industry has now been replaced by fear as there is so much uncertainty in the market. Negotiated sales of fed cattle in TX/OK/NM sold 4.00 lower at 224.00 on a light test. Light negotiated sales in Kansas sold 4.00 to 6.00 lower at mostly 222.00 to 224.00. In Nebraska, live sales were 7.00 lower from 216.00 to 219.00, mostly 218.00; while dressed sales were mostly 10.00 lower at mostly 340.00 to 345.00. Boxed beef cutout values closed slightly higher for the week. Choice closed on Friday at [More.....](#)

CME FEEDER CATTLE INDEX (\$/CWT)



NATIONWIDE REPORTED WEEKLY FEEDER CATTLE AUCTION RECEIPTS

(Receipts vary depending on the number of auctions reported)



REGIONAL WEIGHTED AVERAGE

FEEDER STEER PRICES

NORTH CENTRAL REGION

Steers:	This Week	Last Week	Last Year
600-700 lbs	\$386.43	\$404.36	\$292.40
700-800 lbs	\$354.12	\$361.95	\$267.58
800-900 lbs	\$330.40	\$343.21	\$256.67

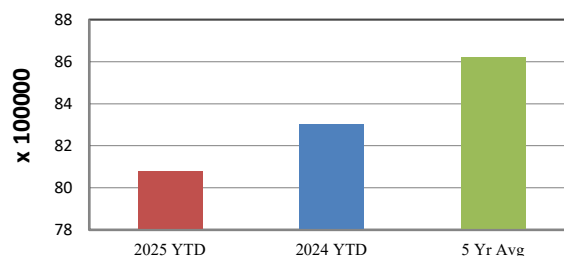
SOUTH CENTRAL REGION

Steers:	This Week	Last Week	Last Year
500-600 lbs	\$395.13	\$400.74	\$296.40
600-700 lbs	\$360.59	\$363.96	\$268.54
700-800 lbs	\$341.29	\$350.22	\$256.69

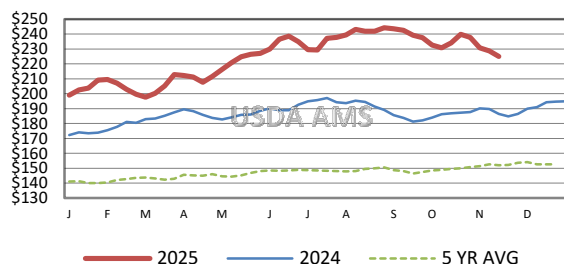
SOUTHEAST REGION

Steers:	This Week	Last Week	Last Year
400-500 lbs	\$412.79	\$418.14	\$307.43
500-600 lbs	\$374.26	\$380.54	\$275.80
600-700 lbs	\$338.76	\$348.32	\$249.81

YEAR TO DATE AUCTION RECEIPTS



5 AREA WEEKLY WEIGHTED AVERAGE SLTR STEER PRICE (\$/CWT)



USDA Livestock, Poultry, & Grain Market News

St. Joseph, Missouri

Phone: 816-676-7000



For detailed state-by-state feeder cattle quotes:

[National Feeder & Stocker Cattle Summary](#)

<http://www.ams.usda.gov/LSMarketNews>