



# National Daily Cow and Boneless Beef Summary

Agricultural Marketing Service  
Livestock, Poultry, and Grain Market News

November 20, 2025

## Boneless Processing Beef and Beef Trimmings 100% Lean Items

LM_XB 401	National		Central		LM_XB 405	Loads	Wtd Avg	Change
	Loads	Wtd Avg	Loads	Wtd Avg				
Fresh 92-94%	0.00	0.00	0.0	0.00	Cutter Cow Carcass Cutout		315.82	-.29
Fresh 90%	15.6	402.57	12.4	402.78	Inside Rounds - Boxed	3.2	509.11	16.62
Fresh 85%	9.4	364.53	3.2	366.22	Outside Rounds	0.9	422.07	(51.13)
Fresh 81%	0.0	0.00	0.0	0.00	Eye of Rounds	1.8	482.96	(0.23)
Fresh 65%	6.1	226.41	3.1	225.33	Flats and Eyes - Combc	4.3	491.48	(5.13)
Fresh 50%	4.9	173.70			Striploins	4.1	589.34	(18.65)
					S.P.B. - Combo	2.7	501.82	(0.12)

## Ground Beef

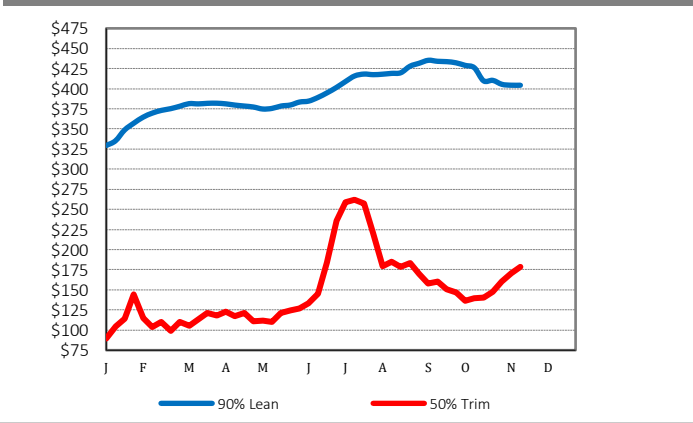
LM_XB 403	Loads	Wtd Avg	Steer/Heifer/Cow Ground Beef	
Fresh 73%	2.1	350.21		
Fresh 81%	7.7	357.55		
Fresh 93%	0.9	529.53		
Ground Chuck	0.1	400.83		
Ground Round				
Ground Sirloin				

## Daily Estimated Slaughter Daily Cow and Bull Bids

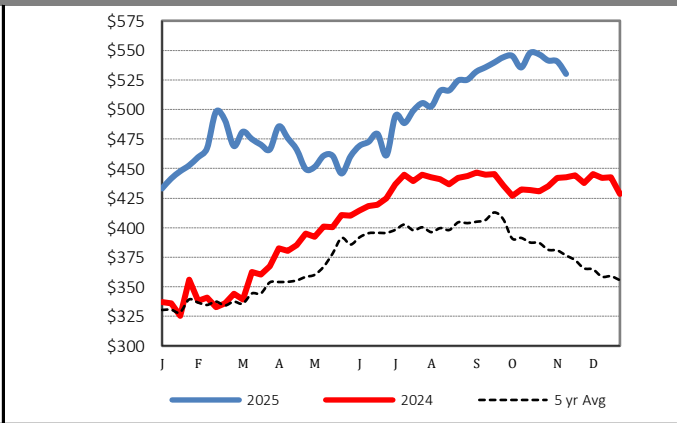
SJ_LS 710		
Today (est)		120,000
Week Ago (est)		120,000
Year Ago (act)		126,984
Week to Date (est)		477,000
Same Period Last Week (est)		471,000
Same Period Last Year (act)		499,435
Previous Day Est	Steer and Heifer	97,000
	Cow and Bull	23,000

LM_CT 138	Low	High
<b>National</b>		
Breaker	245.00	317.00
Boner	242.00	306.00
Lean	241.00	311.00
Bulls	245.00	340.00
<b>Northwest</b>		
Breaker	245.00	280.00
Boner	275.00	300.00
Lean	241.00	310.00
Bulls	273.00	329.00

## 2025 90% Lean vs 50% Lean



## 100% Lean Inside Rounds



Source: USDA Livestock, Poultry, and Grain Market News

Des Moines, Iowa | 515-284-4460 | [dsm.lpgmn@ams.usda.gov](mailto:dsm.lpgmn@ams.usda.gov)

[www.ams.usda.gov/LPSMarketNewsPage](http://www.ams.usda.gov/LPSMarketNewsPage)