

NATIONAL WEEKLY FEEDER & STOCKER CATTLE SUMMARY

St. Joseph, Missouri

Monday, October 6, 2025

USDA LIVESTOCK, POULTRY & GRAIN MARKET NEWS

for w/e Saturday, 10/04/25.

Email: stjoe.lpgmn@usda.gov

Receipts:	This Week	Last Week	Year Ago
SJ LS850	228,700	208,300	242,100

Compared to last week, steers and heifers sold mostly steady to 5.00 lower. That isn't to say there weren't any instances of higher spots, especially on some loads of yearlings but overall, the market was undoubtedly lower. There was pressure on the market as cash fat cattle in the north slipped to around 230.00. Moderate to good demand for spring born calves, farmer feeders are busy in the field with fall harvest, and most aren't wanting a calf yet. Cattle feeders have greatly curbed their enthusiasm for getting feeder cattle bought, they are now approaching the market much more cautiously. Fall temperature swings make it hard to keep even the best calves with all the proper vaccination and weaning programs and healthy weight on prices this time of year. Buyers are looking for calves with precondition shots, especially a respiratory shot. Calves without a fall vaccination program is taking a hit at the auction and selling several dollars per cwt less than fully vaccinated calves. This is an every year occurrence and buyers must be realistic and factor in those risks regardless of overall tight supplies. In Nebraska, Crawford Livestock Market hit some all-time new market highs in several weight classes on Friday with a notable trade of 814 lb spring born calves at 401.00. Plus, other auctions across that state are setting new highs weekly as the auctioneer gruels drops on many weight classes. Packers bid lower as the boxed beef market continues to quickly drop, retreating around 60.00 in the last month. Negotiated sales of fed cattle in TX/OK/NM sold 4.00 lower at 233.00. In Kansas, cash sales sold 3.00 to 4.00 lower at 232.00 to 233.00, mostly 233.00. In Nebraska, live sales were 2.00 to 5.00 lower at 230; while dressed sales were 5.00 lower at 360.00. For the week, Choice Boxed beef closed on Friday at 362.27, 9.16 lower and Select closed at 345.38, 7.06 lower. Weekly Cattle Slaughter under federal inspection estimated at 557K, 2K more than last week and 55K less than a year ago. Auction volume this week included 50 percent weighing over 600 lbs and 39 percent heifers.

[More.....](#)

REGIONAL WEIGHTED AVERAGE

FEEDER STEER PRICES

NORTH CENTRAL REGION

Steers:	This Week	Last Week	Last Year
600-700 lbs	\$426.45	\$415.52	\$285.58
700-800 lbs	\$389.70	\$388.87	\$262.49
800-900 lbs	\$364.87	\$365.62	\$250.67

USDA AMS

SOUTH CENTRAL REGION

Steers:	This Week	Last Week	Last Year
500-600 lbs	\$412.79	\$424.85	\$276.74
600-700 lbs	\$386.55	\$391.76	\$260.70
700-800 lbs	\$371.53	\$376.05	\$251.33

USDA AMS

SOUTHEAST REGION

Steers:	This Week	Last Week	Last Year
400-500 lbs	\$434.18	\$437.91	\$288.82
500-600 lbs	\$382.21	\$392.88	\$262.58
600-700 lbs	\$353.13	\$359.81	\$243.82

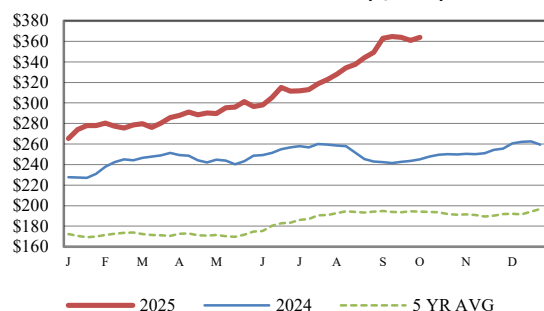
USDA AMS

The next publish date of this report will be October 14, 2025 due to federal holiday.

For detailed state-by-state feeder cattle quotes:

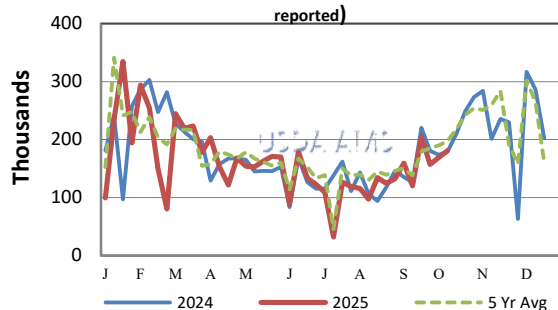
[National Feeder & Stocker Cattle Summary](#)

CME FEEDER CATTLE INDEX (\$/CWT)

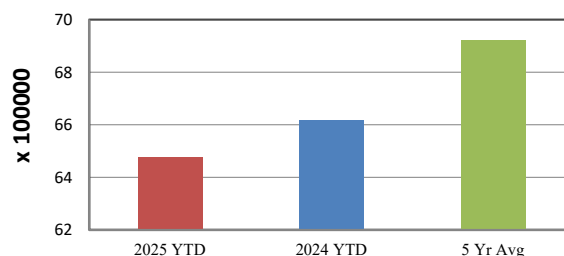


NATIONWIDE REPORTED WEEKLY FEEDER CATTLE AUCTION RECEIPTS

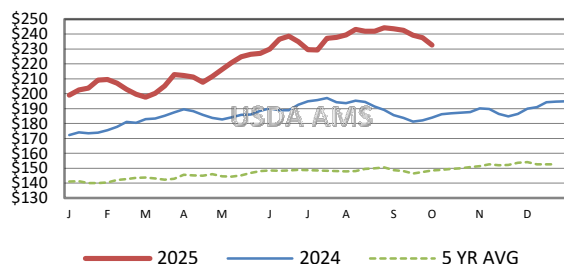
(Receipts vary depending on the number of auctions reported)



YEAR TO DATE AUCTION RECEIPTS



5 AREA WEEKLY WEIGHTED AVERAGE SLTR STEER PRICE (\$/CWT)



USDA Livestock, Poultry, & Grain Market News

St. Joseph, Missouri

Phone: 816-676-7000



<http://www.ams.usda.gov/LSMarketNews>