

NATIONAL WEEKLY FEEDER & STOCKER CATTLE SUMMARY

St. Joseph, Missouri

Monday, September 15, 2025

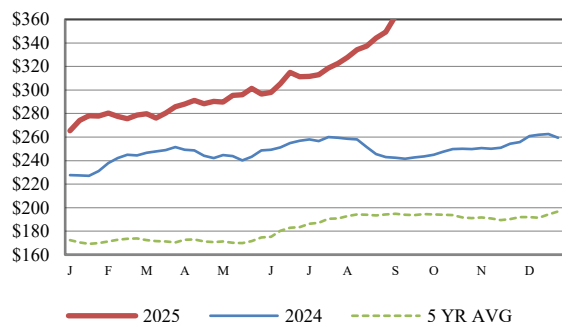
USDA LIVESTOCK, POULTRY & GRAIN MARKET NEWS

for w/e Saturday, 09/13/25. Email: stjoe.lpgmn@usda.gov

Receipts:	This Week	Last Week	Year Ago
SJ LS850	269,750	192,700	310,400

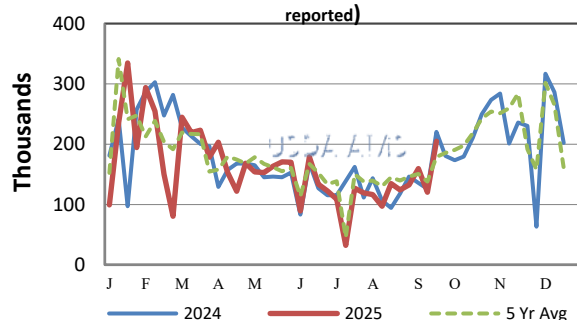
Compared to last week, a very uneven week of prices which for the most part was lower, ranging mostly from 5.00-15.00 lower with instances of 20.00 lower and yet in several regions from steady to as much as 10.00 higher. All of your large volume sales on Monday were compared to two weeks ago as were several others on two-week schedules. The market has reached the time of year where the fall calf run has started and lower calf prices are not uncommon. The variation on the calf crop is numerous as many are un-weaned, right off the cow, less than 30 days to 45 days, flesh conditions, overall quality from top to plain calves, vaccination programs from no shots, 1 round, to two rounds. Then we have the weather to contend with as well as we have gone from cool temperatures to very warm conditions this week. All of this can make a big difference in calf prices with many wide price spreads. To make matters worse Feeder Cattle futures tanked on Tuesday with limit down moves of 9.25, bounced back some on Wednesday and Thursday then sold off sharply on Friday with losses of 4.82 to 7.32 on the front 4 months. It seems the market has been anticipating a break or correction in prices but, the velocity in the break gets everyone's attention. Good news, buyers still want feeders and the better kind, top quality still bring top prices and for the most part are determined to have cattle on hand to market later. Feeder cattle buyers for all classes are trying to put together feeders for feedyards and backgrounders and are flapping cards to get them. With the belief that they can put lbs on cheap enough that they can grow the cattle into money. Looking at prices from around the country buyers still want them, on Monday at Tri-State Livestock in McCook, NE sold 288 hd of 750-800 lb steers averaging 784 lbs at a weighted average price of 388.80 and 391 hd of 902 lb yearling steers at 359.25. Tuesday in Unionville Livestock in Unionville, MO sold 249 hd of 850-900 lb steers averaging 879 lbs at 364.00 weighted average. At Blue Grass Stockyards in Lexington, KY on Tuesday sold 71 hd steers weighing 729 lbs at 388.00. Wednesday at Hub City Livestock in Aberdeen, SD sold 368 hd of 1000-1050 lb steers averaging 1016 lbs for a weighted average of 351.14. At OKC West Livestock in EL Reno, OK on Wednesday sold 425 hd of 800-850 lb steers averaging 812 lbs at 360.83 average. Thursday in Valentine [More.....](#)

CME FEEDER CATTLE INDEX (\$/CWT)



NATIONWIDE REPORTED WEEKLY FEEDER CATTLE AUCTION RECEIPTS

(Receipts vary depending on the number of auctions reported)



REGIONAL WEIGHTED AVERAGE

FEEDER STEER PRICES

NORTH CENTRAL REGION

Steers:	This Week	Last Week	Last Year
600-700 lbs	\$410.79	\$412.98	\$270.96
700-800 lbs	\$385.64	\$393.33	\$259.90
800-900 lbs	\$361.78	\$368.92	\$247.24

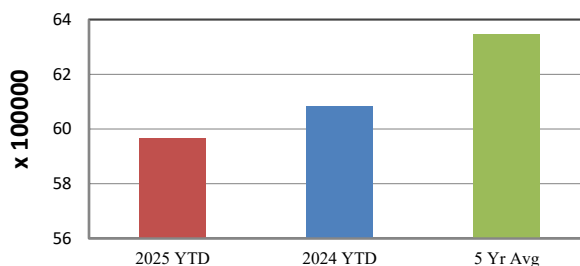
SOUTH CENTRAL REGION

Steers:	This Week	Last Week	Last Year
500-600 lbs	\$426.37	\$435.71	\$274.55
600-700 lbs	\$395.77	\$398.65	\$256.86
700-800 lbs	\$372.07	\$376.28	\$245.20

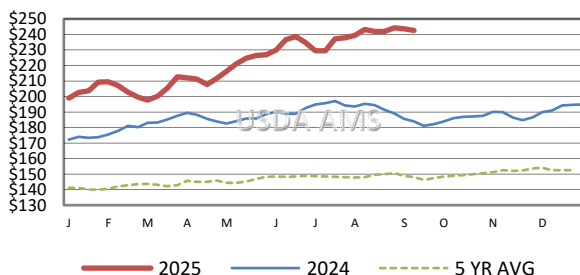
SOUTHEAST REGION

Steers:	This Week	Last Week	Last Year
400-500 lbs	\$438.08	\$449.78	\$275.86
500-600 lbs	\$391.34	\$399.08	\$254.55
600-700 lbs	\$366.22	\$376.46	\$238.12

YEAR TO DATE AUCTION RECEIPTS



5 AREA WEEKLY WEIGHTED AVERAGE SLTR STEER PRICE (\$/CWT)



USDA Livestock, Poultry, & Grain Market News

St. Joseph, Missouri

Phone: 816-676-7000



For detailed state-by-state feeder cattle quotes:

[National Feeder & Stocker Cattle Summary](http://www.ams.usda.gov/LSMarketNews)

<http://www.ams.usda.gov/LSMarketNews>