

NATIONAL WEEKLY FEEDER & STOCKER CATTLE SUMMARY

St. Joseph, Missouri

Monday, September 8, 2025

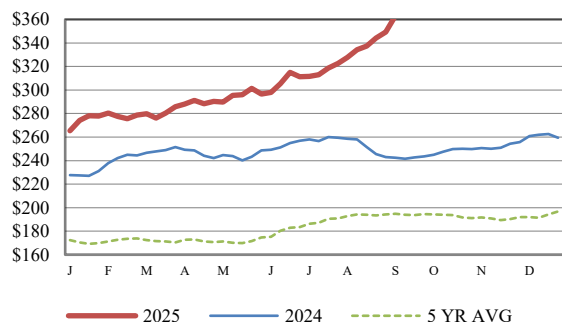
USDA LIVESTOCK, POULTRY & GRAIN MARKET NEWS

for w/e Saturday, 09/06/25. Email: stjoe.lpgmn@usda.gov

Receipts:	This Week	Last Week	Year Ago
SJ LS850	192,700	193,700	216,600

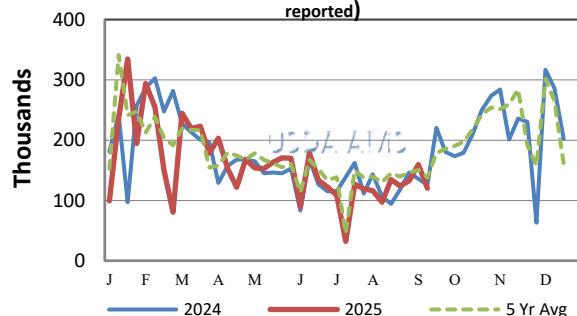
Compared to last week, with Monday Labor Day large volume auctions were closed with several closed on Tuesday but markets trading from mostly mid-week on continued on their upward trend with most advances in the 5.00-10.00 higher range with some regions on calves called steady to 5.00 higher and some areas through the Southeast seeing advances of 10.00-12.00 on calves. Feeder cattle prices continue to advance by the day and see record prices set daily. In many areas producers are moving calves ahead of normal schedules due to the record prices, and at the other end many are holding on as upward trend continues as the value of gain or putting pounds on feeder cattle is paying off handsomely. Seasonal weather changes have buyers paying attention to weaning and vaccination programs as consignments of spring born calves are starting to show up at auctions. Yearling demand continues to be sought after with prices this week again seeing record prices paid as on Tuesday at Blue Grass Stockyards in Lexington, KY sold 59 steers weighing 761 lbs at 392.25. In Green City, MO on Wednesday at Green City Livestock had 388 head of 850-900 lbs steers averaging 878 lbs selling at a weighted average price of 363.90. In Aberdeen, SD at the Hub City Livestock auction sold 300 hd steers weighing 850-900 lbs averaging 884 lbs at a weighted average price of 370.84, with 367 hd of their bigger brothers averaging 988 lbs at 355.10. In Green Forest, AK on Wednesday at the North Arkansas Livestock auction sold 68 hd of steers weighing 740 lbs at 395.50. Then on Wednesday in Bassett, NE at Bassett Livestock auction sold 100 hd of fancy steers weighing 936 lbs at 375.00. On Friday in Herried, SD at the Herried Livestock auction sold 418 steers weighing from 1000-1025 lbs averaging 1008 lbs for a weighted average price of 354.04. But the bell ringer was in Valentine, NE on Thursday at Valentine Livestock saw low 8 weight steers hit the 4.00 lb mark as 68 hd weighing 802 lbs sold at 408.50, another 66 hd weighing 847 lbs at 399.00 and 95 hd weighing 721 lbs at 437.00 and the list goes on. With a record corn crop in the making and cost of gains looking to be lower and with fed cattle market trading in the 240.00 range has demand very good for these top-quality yearlings. The gap between the South and the North on fed cattle finally came together as fed cattle in the Southern Plains traded steady to 1.00. [More.....](#)

CME FEEDER CATTLE INDEX (\$/CWT)



NATIONWIDE REPORTED WEEKLY FEEDER CATTLE AUCTION RECEIPTS

(Receipts vary depending on the number of auctions reported)



REGIONAL WEIGHTED AVERAGE

FEEDER STEER PRICES

NORTH CENTRAL REGION

Steers:	This Week	Last Week	Last Year
600-700 lbs	\$412.98	\$409.94	\$267.93
700-800 lbs	\$393.33	\$385.52	\$260.05
800-900 lbs	\$368.92	\$368.50	\$246.12

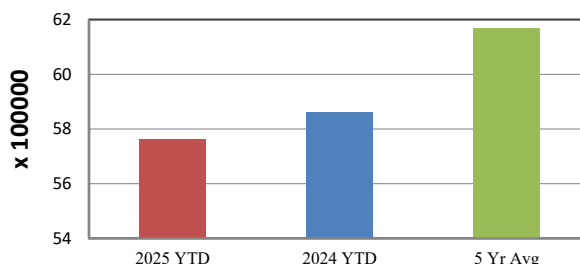
SOUTH CENTRAL REGION

Steers:	This Week	Last Week	Last Year
500-600 lbs	\$435.71	\$432.19	\$282.30
600-700 lbs	\$398.65	\$400.61	\$264.05
700-800 lbs	\$376.28	\$373.70	\$247.00

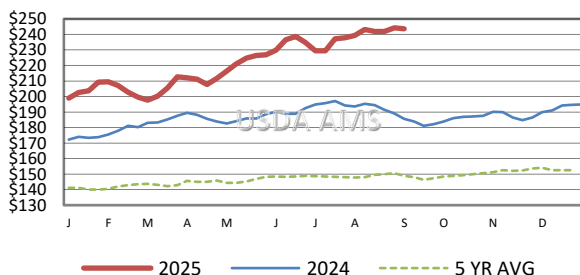
SOUTHEAST REGION

Steers:	This Week	Last Week	Last Year
400-500 lbs	\$449.78	\$435.96	\$281.04
500-600 lbs	\$399.08	\$390.61	\$262.18
600-700 lbs	\$376.46	\$362.33	\$245.47

YEAR TO DATE AUCTION RECEIPTS



5 AREA WEEKLY WEIGHTED AVERAGE SLTR STEER PRICE (\$/CWT)



USDA Livestock, Poultry, & Grain Market News

St. Joseph, Missouri

Phone: 816-676-7000



For detailed state-by-state feeder cattle quotes:

[National Feeder & Stocker Cattle Summary](http://www.ams.usda.gov/LSMarketNews)

<http://www.ams.usda.gov/LSMarketNews>