

NATIONAL WEEKLY FEEDER & STOCKER CATTLE SUMMARY

St. Joseph, Missouri

Tuesday, September 2, 2025

USDA LIVESTOCK, POULTRY & GRAIN MARKET NEWS

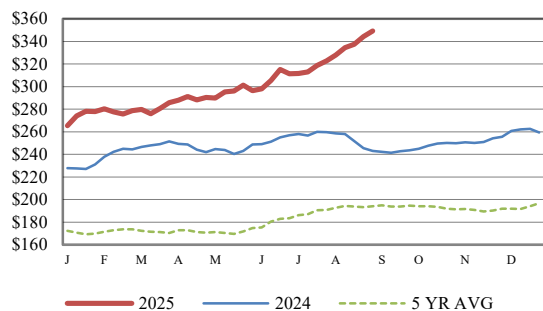
for w/e Saturday, 08/30/25.

Email: stjoe.lpgmn@usda.gov

Receipts:	This Week	Last Week	Year Ago
SJ LS850	193,700	322,600	185,700

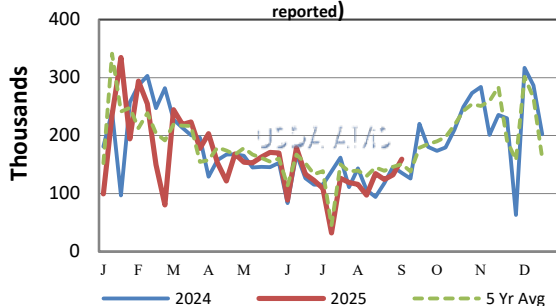
Compared to last week, steers and heifers sold 5.00 to 10.00 higher. The supply of feeders was moderate as cooler weather made transporting livestock much less stressful and overall volume was pretty large for a late summer week. This is the first time in 12 weeks that auction receipts topped 150K as ranchers are taking advantage of the handsome prices in the auction arenas nationwide. Others holding on are hoping that the upward trend continues and they can market their cattle at the top of the market. Prices at the auctions seemed to get higher every day this week, with many new records set. Light 3-weights in Kansas, Oklahoma, South Dakota and Missouri topped the 600.00 mark with the highest being a package of 320 lb steers at Farmers and Ranchers Livestock in Salina(KS) sell at 670.00 or almost \$2,150.00 per head. Widespread rainfall across much of Oklahoma this past week has improved soil conditions, and farmers are now preparing equipment for the upcoming wheat planting season. They are getting ready for grazing season by purchasing some ahead of when they are needed. In addition, yearling 7-wt steers have now topped the 400.00 mark in several states as well. The CME Cattle complex continues to set highs and many analysts are thinking that the market has to continue to roll up as yearlings put on feed now are expected to have a breakeven above 250.00 even with feedstuff input costs being much lower than in recent years. More of the country appeared in the latest drought monitor with just near 52 pct of the nation in some stage of drought now. At this point conditions aren't bad enough that they are requiring any widespread feeding, water concerns, or liquidation. Pasture conditions are still better than normal for this point in the year and cooler weather is an added bonus and ranchers would gladly welcome a good rain at this point. Some feedlots are starting on silage chopping as the calendar is now flipping to September in preparation for the next years feed supply. Cattle feeders have maintained their market leverage all through the summer, a fact that many said would not happen, as the market rallied counter-seasonally. A large corn crop is on the way, keeping costs of feed low, and giving much incentive to refill empty feedlot pens. Negotiated sales of fed cattle in the Southern Plains sold 2.00 higher at 242.00. In Nebraska, live sales were steady at 245.00; while dressed sales were generally

CME FEEDER CATTLE INDEX (\$/CWT)



NATIONWIDE REPORTED WEEKLY FEEDER CATTLE AUCTION RECEIPTS

(Receipts vary depending on the number of auctions reported)



REGIONAL WEIGHTED AVERAGE

FEEDER STEER PRICES

NORTH CENTRAL REGION

Steers:	This Week	Last Week	Last Year
600-700 lbs	\$409.94	\$415.65	\$270.66
700-800 lbs	\$385.52	\$378.84	\$256.45
800-900 lbs	\$368.50	\$357.57	\$246.50

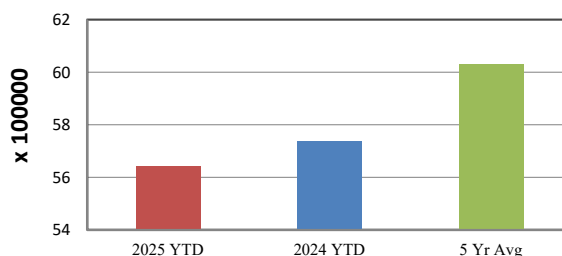
SOUTH CENTRAL REGION

Steers:	This Week	Last Week	Last Year
500-600 lbs	\$432.19	\$425.55	\$279.29
600-700 lbs	\$400.61	\$392.17	\$264.07
700-800 lbs	\$373.70	\$365.61	\$248.14

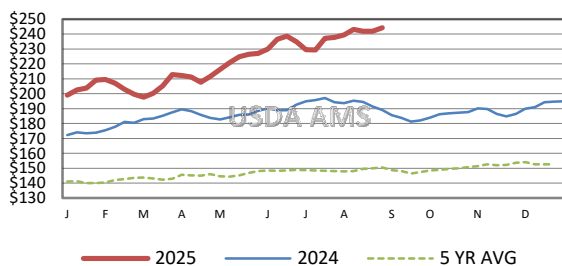
SOUTHEAST REGION

Steers:	This Week	Last Week	Last Year
400-500 lbs	\$435.96	\$425.35	\$286.29
500-600 lbs	\$390.61	\$380.96	\$257.44
600-700 lbs	\$362.33	\$355.70	\$241.40

YEAR TO DATE AUCTION RECEIPTS



5 AREA WEEKLY WEIGHTED AVERAGE SLTR STEER PRICE (\$/CWT)



USDA Livestock, Poultry, & Grain Market News

St. Joseph, Missouri

Phone: 816-676-7000



For detailed state-by-state feeder cattle quotes:

[National Feeder & Stocker Cattle Summary](http://www.ams.usda.gov/LSMarketNews)

<http://www.ams.usda.gov/LSMarketNews>