

NATIONAL WEEKLY FEEDER & STOCKER CATTLE SUMMARY

St. Joseph, Missouri

Monday, August 11, 2025

USDA LIVESTOCK, POULTRY & GRAIN MARKET NEWS

for w/e Saturday, 08/09/25.

Email: stjoe.lpgmn@usda.gov

Receipts:	This Week	Last Week	Year Ago
SJ LS850	162,700	301,600	222,800

Compared to last week, steers and heifers sold 4.00 to 10.00 higher. Good to very good demand for all weights of steers and heifers as the cash fed cattle market reached new all-time record high prices. Auction markets in the Northern Plains are still on their summer sale schedules as pastures are in good enough shape yet and yearlings aren't being forced to town. Cattle feeders are very eager to get cattle placed on feed as their outgoing cattle were very profitable. The market is extremely active as the cash fed cattle reached price levels that seemed impossible during the time of year where fed cattle supplies have historically been the most abundant. Grass yearlings are starting to come to town and are commanding much attention, however those coming out of yards are selling easily and setting new price records as well. The CME Cattle Complex established several new records last week until a huge sell off (limit lower on Feeder Cattle futures) on Friday. Even with that sharp drop, all contracts still closed higher for the week with Fall Feeder Cattle futures were still 7.375 to 8.375 higher for the week. Cattle feeders are paying little attention to the extreme volatility in the futures contracts as the market fundamentals have not changed. Frequent rains through July have the corn crop looking good. That in turn makes lower feed costs, another positive factor at play in the feeder market. In addition to the feeders, quality replacement cattle are in demand as well. On a stick-out sale at Callaway Livestock Center in Kingdom City (MO) last Thursday at their Replacement Cow Special, first calf heifer pairs with spring born male calves at side sold for 6100.00 per pair. Negotiated sales of fed cattle in Kansas sold steady to 1.00 lower at 235.00. In TX/OK/NM, live sales sold steady at 235.00. In Nebraska, live sales were steady to 2.00 lower at 243.00 to 245.00; while dressed sales were steady to 5.00 lower at 378.00 to 385.00. For the week, Choice Boxed beef closed on Friday at 378.84, 15.62 higher and Select closed at 355.09, 14.59 higher. Weekly Cattle Slaughter under federal inspection estimated at 536K, 1K more than last week and 52K less than a year ago. Auction volume this week included 50 percent weighing over 600 lbs and 39 percent heifers.

[More.....](#)

REGIONAL WEIGHTED AVERAGE

FEEDER STEER PRICES

NORTH CENTRAL REGION

Steers:	This Week	Last Week	Last Year
600-700 lbs	\$400.96	\$386.00	\$272.84
700-800 lbs	\$363.02	\$358.53	\$254.99
800-900 lbs	\$341.99	\$343.21	\$243.92

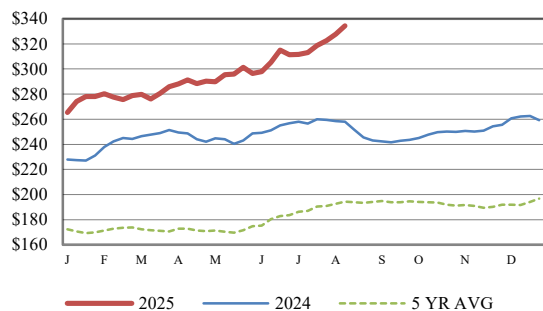
SOUTH CENTRAL REGION

Steers:	This Week	Last Week	Last Year
500-600 lbs	\$413.33	\$406.58	\$287.10
600-700 lbs	\$380.15	\$371.22	\$270.90
700-800 lbs	\$352.48	\$350.68	\$251.67

SOUTHEAST REGION

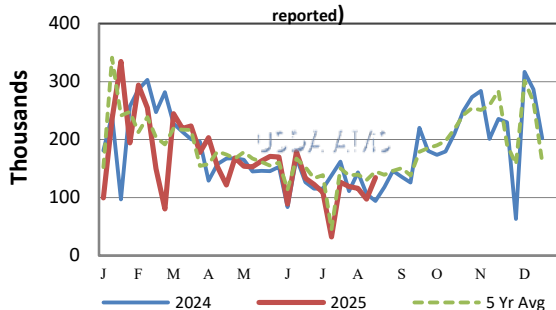
Steers:	This Week	Last Week	Last Year
400-500 lbs	\$410.87	\$407.40	\$293.26
500-600 lbs	\$371.14	\$368.71	\$270.74
600-700 lbs	\$348.24	\$343.79	\$251.45

CME FEEDER CATTLE INDEX (\$/CWT)

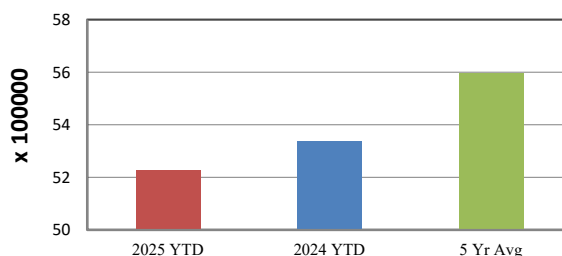


NATIONWIDE REPORTED WEEKLY FEEDER CATTLE AUCTION RECEIPTS

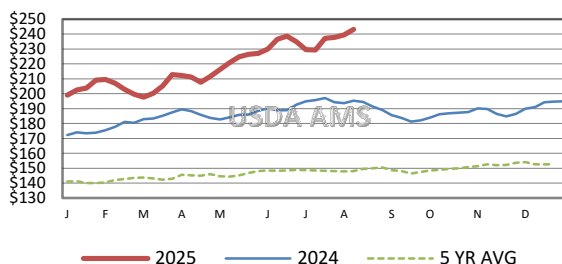
(Receipts vary depending on the number of auctions reported)



YEAR TO DATE AUCTION RECEIPTS



5 AREA WEEKLY WEIGHTED AVERAGE SLTR STEER PRICE (\$/CWT)



USDA Livestock, Poultry, & Grain Market News

St. Joseph, Missouri

Phone: 816-676-7000



For detailed state-by-state feeder cattle quotes:

[National Feeder & Stocker Cattle Summary](#)

<http://www.ams.usda.gov/LSMarketNews>