

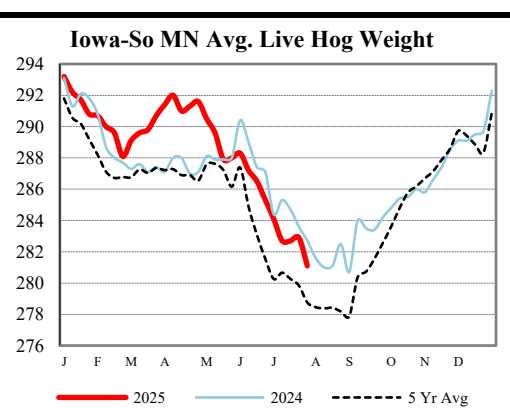
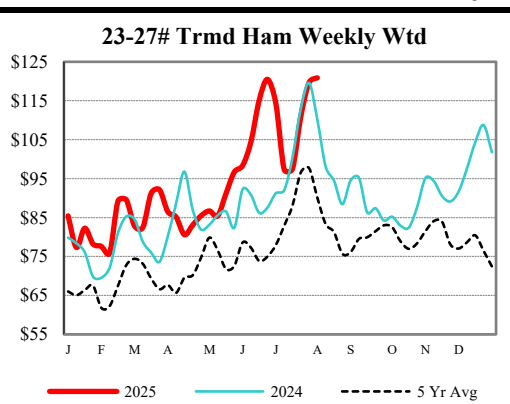
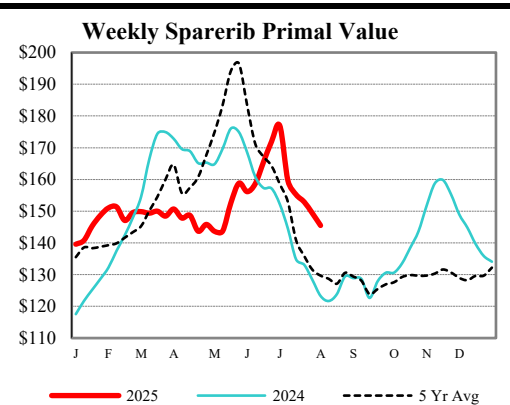
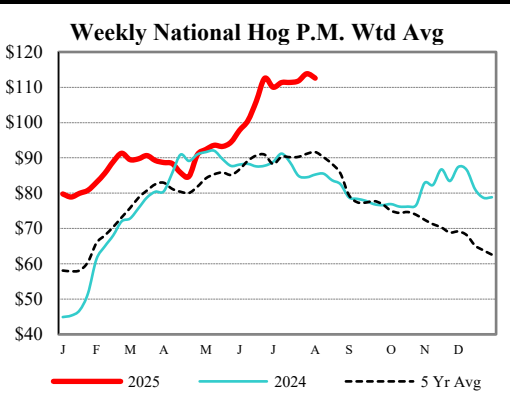
DAILY DIRECT HOGS PLANT DELIVERED as of 1:30 PM				
Negotiated Barrow and Gilt:		Carcass Base Price		Live Price
<u>NATIONAL - AMS 2675/LM_HG203:</u>				
Range:	\$100.00	\$118.00	\$82.50	\$89.10
Weighted Average:	\$113.77		\$87.39	
Change from Prior Day:	\$0.25		*	
Head Count:	13,013		459	
<u>IOWA/MINNESOTA - AMS 2675/LM_HG206:</u>				
Weighted Average:	\$114.90		*	
Change from Prior Day:	\$1.93		*	
<u>WESTERN CORNBELT - AMS 2675/LM_HG212:</u>				
Weighted Average:	\$115.19		*	
Change from Prior Day:	\$2.08		*	
<u>EASTERN CORNBELT - AMS 2675/LM_HG210:</u>				
Weighted Average:	\$105.88		*	
Change from Prior Day:	*		*	
*Price not reported due to confidentiality.				

NATIONAL DAILY PORK REPORT FOB PLANT - AMS 2498/LM_PK602:				
Carcass Cutout Values	115.22	Change:	(-2.90)	
Primal Loin	96.13		(-3.75)	
Primal Butt	111.07		0.04	
Primal Picnic	93.59		(-2.49)	
Primal Rib	146.52		5.72	
Primal Ham	115.18		(-7.22)	
Primal Belly	186.72		(-3.32)	
Total Loads	371.54			
Pork Cuts	323.77	Lds		
Trim/Process Pork	47.77	Lds		

DAILY HOG SLAUGHTER UNDER FIS - AMS 3208/SJ_LS710	
Today (est)	479,000
Week Ago (est)	470,000
Year Ago (act)	477,361
Week to Date (est)	1,386,000
Same Period Last Week (est)	1,380,000
Same Period Last Year (act)	1,367,591

National Daily Direct Hog Prior Day Report - Slaughtered Swine - AMS 2511/LM_HG201					
Producer Sold:	NEG	OMF	SPMF	OPA	Total
Head Count	6,235	31,311	116,930	75,489	230,001
Carcass Base Price	112.19	99.5	107.95	100.80	104.62
Average Net Price	113.20	102.92	109.62	102.81	106.58
***Negotiated Formula included in total*** *Price not reported due to confidentiality.					

IOWA-SOUTHERN MINNESOTA WEEKLY AVERAGE WEIGHT - AMS 2840/NW_LS720				
For Week Ending Sat,		Head	Average	
Aug 02, 2025		Ending	Count	Weight
		8/2/2025	712,000	281.1
Week Ago:		7/26/2025	726,000	281.1
Year Ago:		8/3/2024	776,000	281.6



USDA Livestock, Poultry & Grain Market News  
Des Moines, Iowa | PH 515-284-4460  
Email: [Desm.LPGMN@usda.gov](mailto:Desm.LPGMN@usda.gov)

<https://mymarketnews.ams.usda.gov/viewReport/2872>

[USDA AMS Livestock, Poultry & Grain Market News](#)