

NATIONAL WEEKLY FEEDER & STOCKER CATTLE SUMMARY

St. Joseph, Missouri

Monday, July 28, 2025

USDA LIVESTOCK, POULTRY & GRAIN MARKET NEWS

for w/e Saturday, 07/26/25.

Email: stjoe.lpgmn@usda.gov

Receipts:	This Week	Last Week	Year Ago
SJ LS850	335,100	340,200	374,300

Compared to last week, steers and heifers sold 4.00 to 9.00 higher. Demand was good to very good as the feeder cattle freight train keeps rolling down the track. Extreme heat across a large portion of the country left a shortage of receipts in its wake again this week as supply would be considered light to moderate at these levels. The CME Cattle Complex came out of the gate on Monday with sharp gains and it continued through most of the week. Feeder Cattle futures were mostly 8.00 to 9.00 higher for the week while Live Cattle futures were mostly 3.00 to 4.00 higher for the week. Unweaned calves or those with fescue hair are not very desirable as they become very stressed in the heat, however yearlings found the best demand again this week. Buyers are said to be wanting and needing cattle, but limited offerings has made it hard to put together loads and fill orders in areas where load lots are not available. Friday saw the release of two cattle reports; the monthly cattle on feed and the semi-annual inventory. The cattle on feed report was extremely bullish on feed numbers were 98 pct of last year, marketings were 96 pct and placements were 92 pct with the placement factor being 6 percent below the average pre-report estimate. One of the biggest issues playing into the lower placement number is the fact that grass is abundant in most areas and many calves are likely to be spending more days on pasture and adding weight on grass. This will eventually come into play later as cattle come into the feedlots at heavier weights. The other report was the semi-annual inventory report which hasn't been released for two years so comparisons were a bit more difficult to make this report is also much more limited in data than the January version. Most numbers were slightly above pre-report estimates but still below two years ago. The general take away is that producers are keeping cows for another calf rather than culling which is also supported by the low slaughter thus far this year. There were mixed views about if any heifer retention is really taking place, but most agreed if so, it was regional and likely limited so far. Negotiated sales of fed cattle in Kansas sold steady to 1.00 higher at 230.00 to 232.00. In TX/OK/NM, live sales sold steady to 2.00 higher at 230.00 to 232.00. In Nebraska, live sales were 2.00 to 5.00 higher at 242.00 to 245.00; while dressed sales were steady at 380.00. For the week, Choice Boxed beef closed on Friday at 366.68, 6.87 lower and Select closed at 344.87, 6.62 lower. Weekly Cattle Slaughter under federal inspection estimated at 549K, 14K less last week and 56K less than a year ago. Auction volume this week included 56 percent weighing over 600 lbs and 38 percent heifers.

[More.....](#)

REGIONAL WEIGHTED AVERAGE

FEEDER STEER PRICES

NORTH CENTRAL REGION

Steers:	This Week	Last Week	Last Year
600-700 lbs	\$375.05	\$370.46	\$310.41
700-800 lbs	\$359.18	\$350.27	\$282.92
800-900 lbs	\$337.21	\$326.20	\$262.44

USDA AMS

SOUTH CENTRAL REGION

Steers:	This Week	Last Week	Last Year
500-600 lbs	\$392.99	\$387.86	\$310.49
600-700 lbs	\$370.33	\$359.93	\$288.87
700-800 lbs	\$338.97	\$335.39	\$266.78

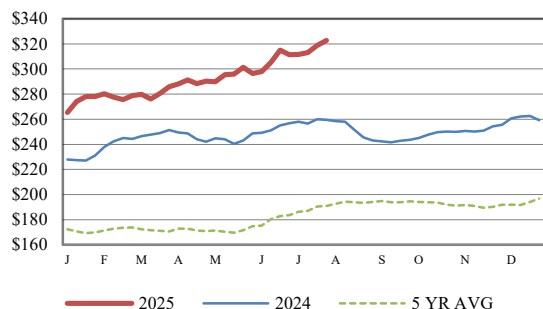
USDA AMS

SOUTHEAST REGION

Steers:	This Week	Last Week	Last Year
400-500 lbs	\$402.77	\$393.98	\$309.61
500-600 lbs	\$361.54	\$359.53	\$286.97
600-700 lbs	\$337.15	\$335.09	\$264.28

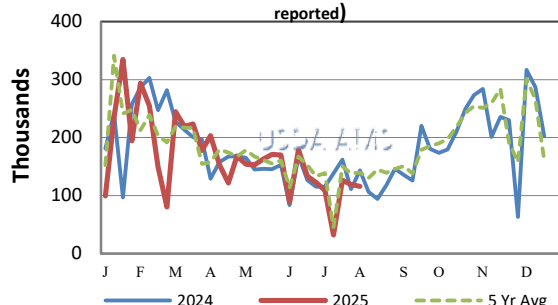
USDA AMS

CME FEEDER CATTLE INDEX (\$/CWT)

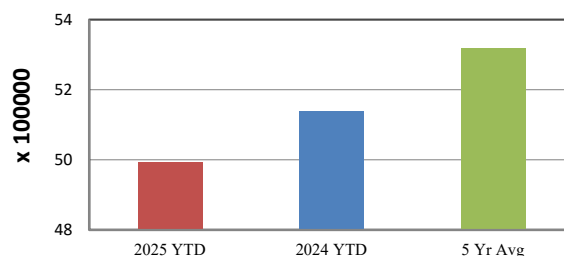


NATIONWIDE REPORTED WEEKLY FEEDER CATTLE AUCTION RECEIPTS

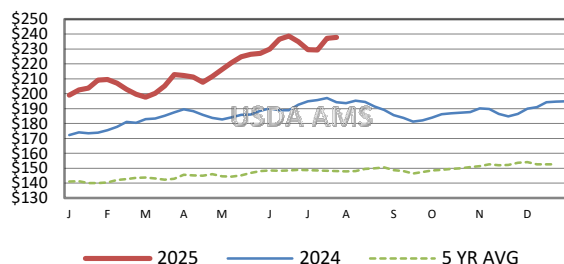
(Receipts vary depending on the number of auctions reported)



YEAR TO DATE AUCTION RECEIPTS



5 AREA WEEKLY WEIGHTED AVERAGE SLTR STEER PRICE (\$/CWT)



USDA Livestock, Poultry, & Grain Market News

St. Joseph, Missouri

Phone: 816-676-7000



For detailed state-by-state feeder cattle quotes:

[National Feeder & Stocker Cattle Summary](#)

<http://www.ams.usda.gov/LSMarketNews>