

# NATIONAL WEEKLY FEEDER & STOCKER CATTLE SUMMARY

St. Joseph, Missouri

Monday, July 21, 2025

# USDA LIVESTOCK, POULTRY & GRAIN MARKET NEWS

for w/e Saturday, 07/19/25.

Email: [stjoe.lpgmn@usda.gov](mailto:stjoe.lpgmn@usda.gov)

| Receipts:                | This Week | Last Week | Year Ago |
|--------------------------|-----------|-----------|----------|
| <a href="#">SJ LS850</a> | 340,200   | 498,400   | 186,800  |

Compared to last week, steers and heifers sold steady to 6.00 higher as overall demand was good to very good nationwide. On paper the market for calves may have appeared lower for the week. However, this was more of a supply issue in both numbers and quality than it was an actual downturn of the market. Demand for the unweaned bawling calves was less this week as extreme heat set in and this makes it very hard to deal with these types of calves that don't handle stress well. The supply of feeders was light to moderate several auctions were on an off-schedule week and there were others that had very light runs or canceled due to the extreme heat. In the North Plains, the selling condition of the yearlings coming off grass was in the buyers' favor as most loads sold in optimal flesh and fill for going into the feedlot (green and empty). Cattle numbers appear to be in short supply across the region and when a buyer can back fill several pens with the like cattle they are not going to pass that up, even when the cattle are costing over 3000.00 per head sitting at the auction market for yearling steers. At Huss Livestock Market in Kearney, NE, one consignment had 11 loads of 9 weight steers in at one shot and the buyer took them all. The cash fed cattle market remains in all-time record high range, keeping demand for feeder cattle red hot. Timely rains this summer have kept growing conditions for crops and pasture in good shape as new crop corn futures has been in the 4.15 to 4.25 range this month. Negotiated sales of fed cattle in Kansas sold steady to 1.00 higher at 230.00 to 231.00. In TX/OK/NM, live sales sold steady to 2.00 higher at 230.00. In Nebraska, live sales were steady at 240.00 to 241.00; while dressed sales were steady at mostly 380.00. For the week, Choice Boxed beef closed on Friday at 373.55, 5.09 lower and Select closed at 351.49, 15.00 lower. Weekly Cattle Slaughter under federal inspection estimated at 563K, 5K less last week and 25K less than a year ago. Auction volume this week included 50 percent weighing over 600 lbs and 37 percent heifers.

[More.....](#)

## REGIONAL WEIGHTED AVERAGE

### FEEDER STEER PRICES

#### NORTH CENTRAL REGION

| Steers:     | This Week | Last Week | Last Year |
|-------------|-----------|-----------|-----------|
| 600-700 lbs | \$370.46  | \$386.68  | \$300.90  |
| 700-800 lbs | \$350.27  | \$355.79  | \$270.80  |
| 800-900 lbs | \$326.20  | \$328.61  | \$257.44  |

USDA AMS

#### SOUTH CENTRAL REGION

| Steers:     | This Week | Last Week | Last Year |
|-------------|-----------|-----------|-----------|
| 500-600 lbs | \$387.86  | \$395.59  | \$305.61  |
| 600-700 lbs | \$359.93  | \$358.96  | \$284.75  |
| 700-800 lbs | \$335.39  | \$329.84  | \$263.46  |

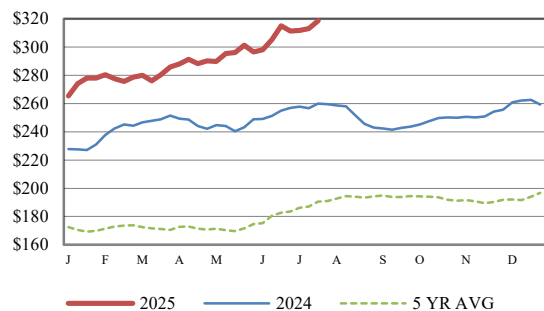
USDA AMS

#### SOUTHEAST REGION

| Steers:     | This Week | Last Week | Last Year |
|-------------|-----------|-----------|-----------|
| 400-500 lbs | \$393.98  | \$389.14  | \$311.38  |
| 500-600 lbs | \$359.53  | \$355.11  | \$285.96  |
| 600-700 lbs | \$335.09  | \$332.16  | \$267.31  |

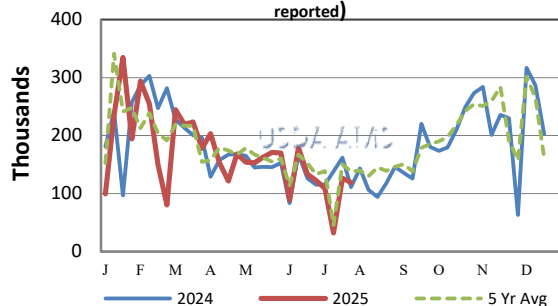
USDA AMS

## CME FEEDER CATTLE INDEX (\$/CWT)

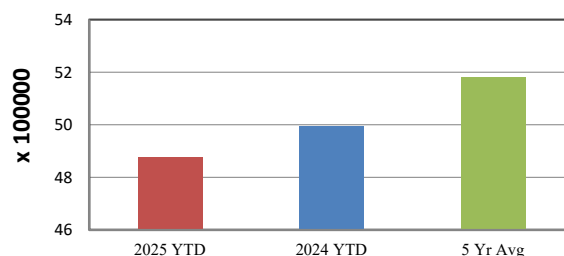


## NATIONWIDE REPORTED WEEKLY FEEDER CATTLE AUCTION RECEIPTS

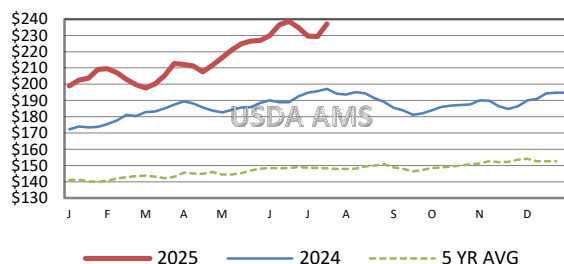
(Receipts vary depending on the number of auctions reported)



## YEAR TO DATE AUCTION RECEIPTS



## 5 AREA WEEKLY WEIGHTED AVERAGE SLTR STEER PRICE (\$/CWT)



## USDA Livestock, Poultry, & Grain Market News

St. Joseph, Missouri

Phone: 816-676-7000



For detailed state-by-state feeder cattle quotes:

[National Feeder & Stocker Cattle Summary](http://www.ams.usda.gov/LSMarketNews)

<http://www.ams.usda.gov/LSMarketNews>