

**DAILY DIRECT HOGS PLANT DELIVERED as of 1:30 PM**

Negotiated Barrow and Gilts:	Carcass Base Price	Live Price
<a href="#">NATIONAL - AMS 2675/LM HG203:</a>		
Range:	* *	\$55.00 \$75.40
Weighted Average:	*	\$70.67
Change from Prior Day:	*	<b>(-\$6.34)</b>
Head Count	504	748

[IOWA/MINNESOTA - AMS 2675/LM HG206:](#)

Weighted Average:	*	*
Change from Prior Day:	*	*

[WESTERN CORNBELT - AMS 2675/LM HG212:](#)

Weighted Average:	*	*
Change from Prior Day:	*	*

[EASTERN CORNBELT - AMS 2675/LM HG210:](#)

Weighted Average:	*	*
Change from Prior Day:	*	*

\*Price not reported due to confidentiality.

[NATIONAL DAILY PORK REPORT FOB PLANT- AMS 2498/LM PK602:](#)

Carcass Cutout Values	106.75	Chg:	<b>(-0.47)</b>
Primal Loin	94.56		<b>(-0.92)</b>
Primal Butt	131.92		<b>(-0.63)</b>
Primal Picnic	81.71		0.93
Primal Rib	158.48		1.00
Primal Ham	98.33		0.11
Primal Belly	156.01		<b>(-1.09)</b>
Total Loads	304.72		
Pork Cuts	263.76	Lds	
Trim/Process Pork	40.96	Lds	

[DAILY HOG SLAUGHTER UNDER FIS - AMS 3208/SJ LS710](#)

Today (est)	463,000
Week Ago (est)	2,000
Year Ago (act)	478,540

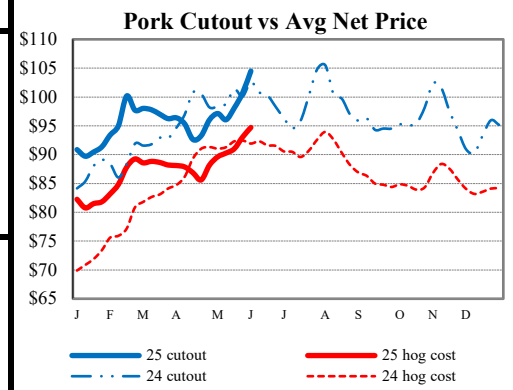
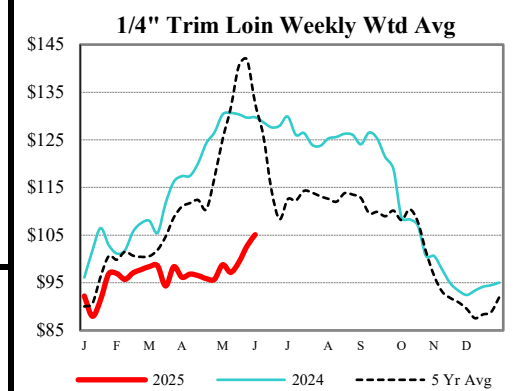
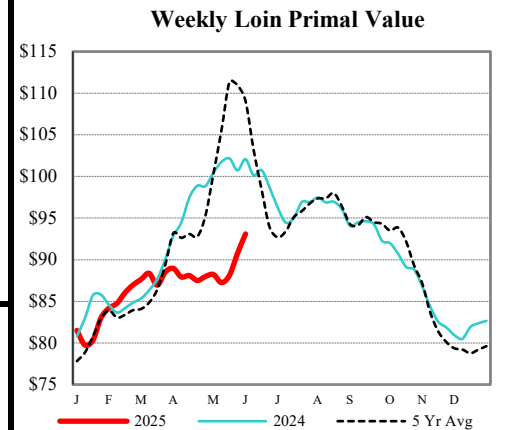
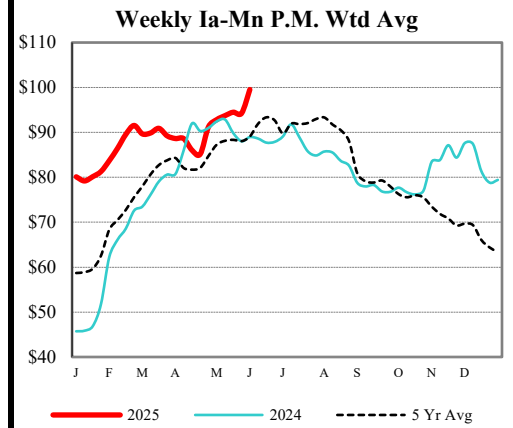
[National Daily Direct Hog Prior Day Report - Slaughtered Swine - AMS 2511/LM HG201](#)

Producer Sold:	NEG	OMF	SPMF	OPA	Total
Head Count	10,147	52,403	175,264	112,470	350,957
Carcass Base Price	94.78	94.99	94.55	92.35	93.90
Average Net Price	96.56	97.55	96.27	93.86	95.67

\*\*\*Negotiated Formula included in total\*\*\* \*Price not reported due to confidentiality.

[ESTIMATED WEEKLY PORK PRODUCTION UNDER FIS - AMS 3209/SJ LS712](#)

Week Ending	Hog Slaughter	Million Pounds	Live Weight	Dressed Weight
05/31/25	2,163,000	466.7	290	216
05/24/25	2,362,000	511.2	291	217
2025 YTD	53,035,000	11501.3		
2024 YTD	54,137,000	11695.1		



USDA Livestock, Poultry & Grain Market News

Des Moines, Iowa | PH 515-284-4460

Email: [Desm.LPGMN@usda.gov](mailto:Desm.LPGMN@usda.gov)

<https://mymarketnews.ams.usda.gov/viewReport/2872>

USDA AMS Livestock, Poultry & Grain Market News