

NATIONAL WEEKLY FEEDER & STOCKER CATTLE SUMMARY

St. Joseph, Missouri

Monday, February 10, 2025

USDA LIVESTOCK, POULTRY & GRAIN MARKET NEWS

for w/e Saturday, 02/08/25.

Email: stjoe.lpgmn@usda.gov

Receipts:	This Week	Last Week	Year Ago
SJ LS850	304,100	348,300	417,700

Compared to last week, steers sold 5.00 to 10.00 lower while heifers sold 3.00 to 8.00 lower. The weakness in the futures complex was too great to ignore, which pulled the cash feeder cattle market lower. The CME Cattle Complex was under pressure all week as ranchers were surprised after somewhat bullish Cattle on Feed and Inventory numbers released in January. Outside economic influences ruled the week as markets struggled to find a foothold throughout the week. Traders come out of the gate hot on Monday and drove spring Feeder cattle contracts over 5.00 lower on Monday and over 2.00 lower on Tuesday. A reprieve Wednesday with a 2.00 to 3.00 higher trend only to be hit in the mouth with another over 5.00 drop on Thursday. For the week, spring Feeder Cattle futures were 9.525 to 10.825 lower. April and June Live Cattle contracts were not hit as hard, however they were 5.525 and 4.600 lower on the week and coming off record highs for futures and cash fed cattle. Many lots of cattle in the Northern Plains starting to display a little extra flesh due to the mostly warm winter and excelling on their feeding rations with top quality genetics. Another winter storm in the forecast for the coming week across Kansas and Missouri through to the Virginias and bringing with it bone chilling temperatures again. Several inches of snow and some ice forecasted the further east the storm tracks. Packers are starting to cut kills as the boxed beef values work lower, making cattle feeders rethink their extreme bullish mindsets. Negotiated sales of slaughter steers and heifers in the Southern Plains sold 2.00 lower at 206.00. In Nebraska, live sales were 2.00 lower at 208.00, while dressed sales sold 2.00 lower at 328.00. For the week, Choice Boxed beef closed on Friday at 321.67, 5.81 lower and Select closed at 312.90, 4.17 lower. Weekly Cattle Slaughter under federal inspection estimated at 584K, 16K less than last week and 33K less than a year ago. Auction volume this week included 54 percent weighing over 600 lbs and 42 percent heifers.

REGIONAL WEIGHTED AVERAGE

FEEDER STEER PRICES

NORTH CENTRAL REGION

Steers:	This Week	Last Week	Last Year
600-700 lbs	\$319.50	\$327.55	\$287.22
700-800 lbs	\$292.10	\$299.91	\$258.73
800-900 lbs	\$271.25	\$280.93	\$239.55

SOUTH CENTRAL REGION

Steers:	This Week	Last Week	Last Year
500-600 lbs	\$339.64	\$341.62	\$298.40
600-700 lbs	\$304.12	\$308.13	\$268.07
700-800 lbs	\$277.14	\$280.42	\$246.21

SOUTHEAST REGION

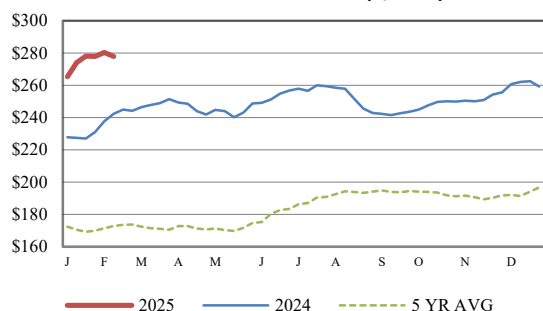
Steers:	This Week	Last Week	Last Year
400-500 lbs	\$348.08	\$356.46	\$303.12
500-600 lbs	\$313.35	\$319.25	\$271.41
600-700 lbs	\$278.76	\$289.15	\$243.95

The next publish date of this report will be Feb 18, 2025 due to federal holiday.

For detailed state-by-state feeder cattle quotes:

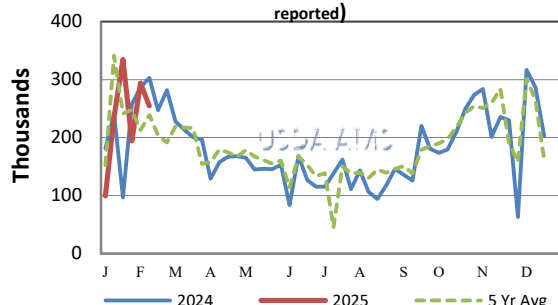
[National Feeder & Stocker Cattle Summary](#)

CME FEEDER CATTLE INDEX (\$/CWT)

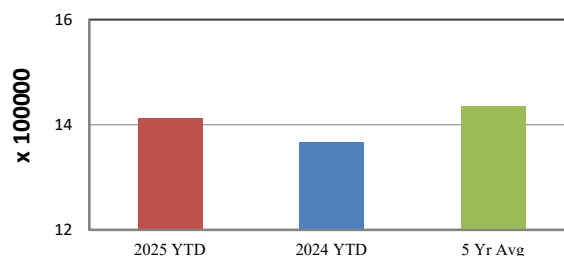


NATIONWIDE REPORTED WEEKLY FEEDER CATTLE AUCTION RECEIPTS

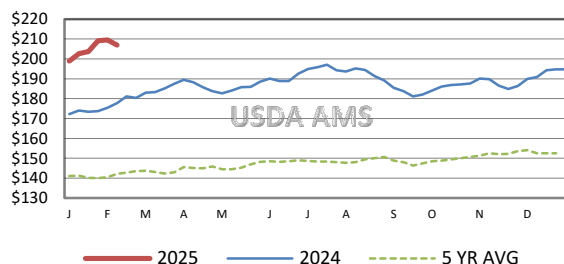
(Receipts vary depending on the number of auctions reported)



YEAR TO DATE AUCTION RECEIPTS



5 AREA WEEKLY WEIGHTED AVERAGE SLTR STEER PRICE (\$/CWT)



USDA Livestock, Poultry, & Grain Market News

St. Joseph, Missouri

Phone: 816-676-7000



<http://www.ams.usda.gov/LSMarketNews>