

DAILY DIRECT HOGS PLANT DELIVERED as of 1:30 PM

Negotiated Barrow and Gilt:	Carcass Base Price		Live Price	
<u>NATIONAL - AMS 2675/LM HG203:</u>				
Range:	\$83.00	\$92.00	\$57.00	\$71.20
Weighted Average:	\$88.49		\$67.09	
Change from Prior Day:	(-\$1.29)		*	
Head Count:	1,268		870	

IOWA/MINNESOTA - AMS 2675/LM HG206:

Weighted Average:	\$90.02	*
Change from Prior Day:	(-\$0.57)	*

WESTERN CORNBELT - AMS 2675/LM HG212:

Weighted Average:	\$88.07	*
Change from Prior Day:	(-\$1.96)	*

EASTERN CORNBELT - AMS 2675/LM HG210:

Weighted Average:	\$89.13	\$67.09
Change from Prior Day:	0.14	*

*Price not reported due to confidentiality

NATIONAL DAILY PORK REPORT FOB PLANT- AMS 2498/LM PK602:

Carcass Cutout Values	100.09	Change:	0.13
Primal Loin	99.45		0.47
Primal Butt	129.85		0.96
Primal Picnic	77.39		(-0.29)
Primal Rib	165.15		1.92
Primal Ham	84.66		0.14
Primal Belly	128.42		(-0.24)
Total Loads	214.37		
Pork Cuts	196.96	lds.	
Trim/Process Pork	17.41	lds.	

Weekly USDA By-Product Drop Value (Hog): 4.41 (-0.01)

DAILY HOG SLAUGHTER UNDER FIS - AMS 3208/SJ LS710

Today (est)	480,000	Saturday:	67,000
Week Ago (est)	484,000		89,000
Year Ago (act)	463,781		84,680
Week to Date (est)	2,420,000		2,487,000
Same Period Last Week (est)	2,396,000		2,485,000
Same Period Last Year (act)	2,367,932		2,452,612

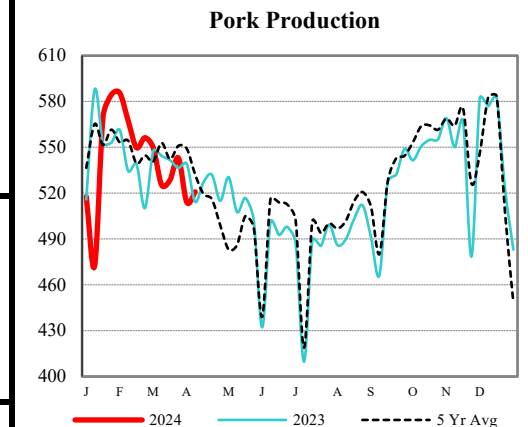
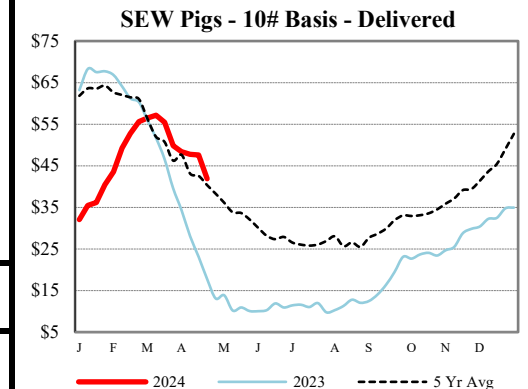
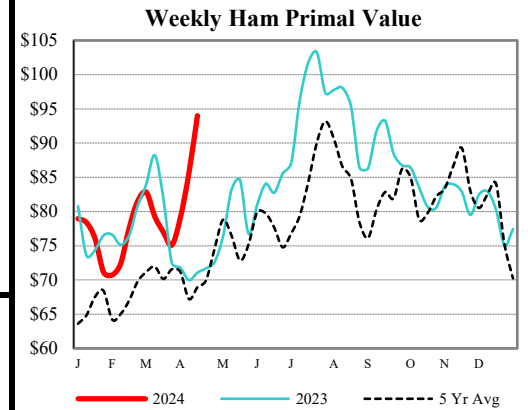
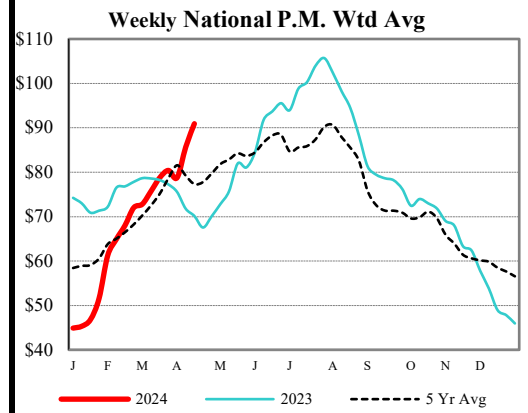
CME Lean Hog Close	High	Low	Change	Settle
APR	N/A			
MAY	N/A			
JUN	N/A			
JLY	N/A			

CME Lean Hog Delayed Futures

US Direct Delivered Feeder Pig Summary for Weekending - AMS 2810 19-Apr-24

Formula, Cash, & Composite Wtd Avg Prices

		Formula	Cash	Composite
SEW	10-12 lb Basis	52.05	41.92	46.35
Feeder Pigs	40 lb Basis		95.18	95.18



USDA Livestock, Poultry & Grain Market News
Des Moines, Iowa | PH 515-284-4460
Email: Desm.LPGMN@usda.gov

<https://mymarketnews.ams.usda.gov/viewReport/2872>