

[AMS 2453/LM XB403](#)

DAILY ESTIMATED CUTOUT VALUES

	Choice	Select	Choice/Select Spread
	600-900#	600-900#	
Current Cutout Values:	298.02	292.64	5.38
Change from prior day:	(-2.86)	1.30	
Primal Rib	434.99	425.59	
Primal Chuck	249.64	249.21	
Primal Round	247.28	245.98	
Primal Loin	403.89	387.27	
Primal Brisket	241.19	237.26	
Primal Short Plate	230.24	230.24	
Primal Flank	153.66	148.48	

Load Count:	
Total	111
Choice	71
Select	17
Trimming	8
Grinds	16

Fresh 50% Trimmings 8 Loads @ 87.19

[AMS 2829/NW LS441](#)

USDA BY-PRODUCT DROP VALUE (STEER) - DAILY

11.72 Change: (-0.02)

[AMS 2466/LM CT100](#)

5 AREA WEEKLY ACCUMULATED WEIGHTED AVG CATTLE PRICE

As of 10:00 am	Head Count	Avg Weight	Avg Price
Live Steer			
Live Heifer			
Dressed Steer			
Dressed Heifer			

[AMS 3208/SJ LS710](#)

DAILY CATTLE SLAUGHTER

Today	124,000
Week Ago	125,000
Year Ago (act)	128,749
Week to Date	245,000
Same Period Last Week	246,000
Same Period Last Year	250,806
Previous Day	Steer and Heifer 97,000 Cow and Bull 24,000

[AMS 3209/SJ LS712](#)

BEEF PRODUCTION

	4/13/2024 (Estimate)	Last Week (Estimate)	Last Year (Actual)
Slaughter	603,000	613,000	611,000
Live Weights	1398	1395	1358
Dressed Weights	847	845	819
Beef Production (millions of pounds)	509.8	517.1	499.7

[AMS 2825/NW LS410](#)

USDA BEEF CARCASS PRICE EQUIVALENT INDEX VALUE

	Choice	Select	Dressing percent:	
	600-900#	600-900#	Steer	Heifer
Change	\$281.66 (-1.39)	\$274.66 0.68	63.46	63.31

[AMS 2455/LM XB405](#)

USDA NATIONAL CUTTER COW CARCASS CUTOUT

270.16 0.62 90% lean: 349.94

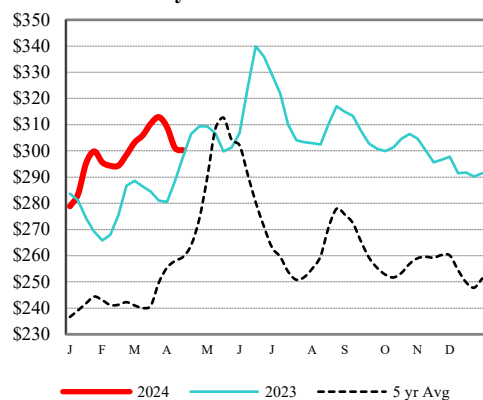
CME LIVE CATTLE

	High	Low	Change	Settle
APR	N/A			
JUN	N/A			
AUG	N/A			

CME FEEDER CATTLE

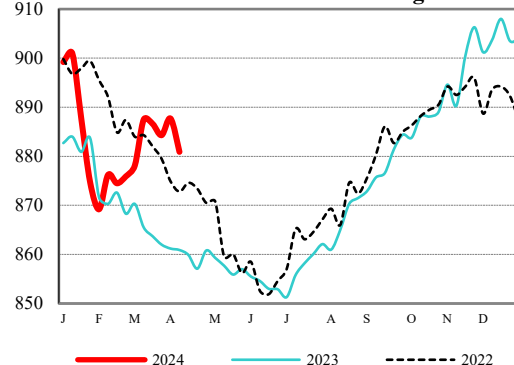
	High	Low	Change	Settle
APR	N/A			
MAY	N/A			
AUG	N/A			

Weekly Choice Cutout



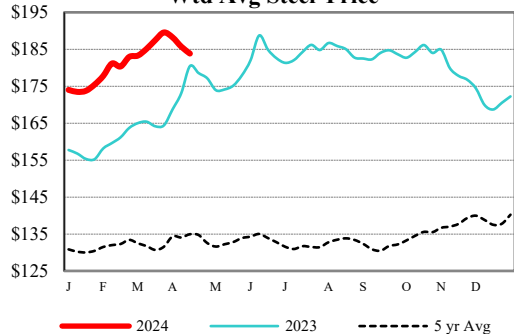
— 2024 — 2023 - - - 5 yr Avg

LMR Steer/Heifer Dressed Weights



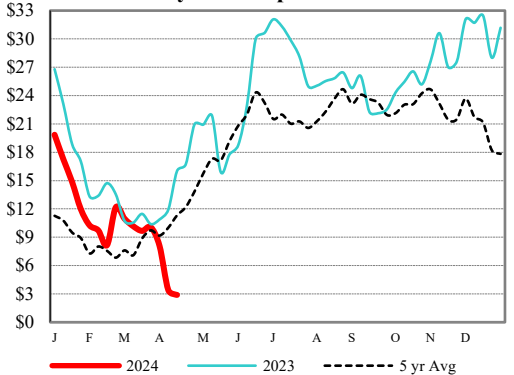
— 2024 — 2023 - - - 2022

5 Area Weekly Wtd Avg Steer Price



— 2024 — 2023 - - - 5 yr Avg

Weekly Ch/Se Spread



— 2024 — 2023 - - - 5 yr Avg

USDA Livestock, Poultry & Grain Market News

Des Moines, Iowa | PH 515-284-4460

Email: Desm.LPGMN@usda.gov

<https://mymarketnews.ams.usda.gov/viewReport/2870>

USDA AMS Livestock, Poultry & Grain Market News