

NATIONAL WEEKLY FEEDER & STOCKER CATTLE SUMMARY

USDA LIVESTOCK, POULTRY & GRAIN MARKET NEWS

St. Joseph, Missouri

Tuesday, February 20, 2024

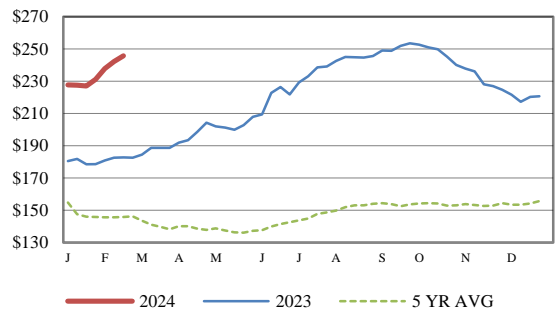
for w/e Saturday, 02/17/24. Email: stjoe.lpgmn@usda.gov

| | | | |
|--------------------------|-----------|-----------|----------|
| Receipts: | This Week | Last Week | Year Ago |
| SJ LS850 | 306,700 | 417,700 | 285,300 |

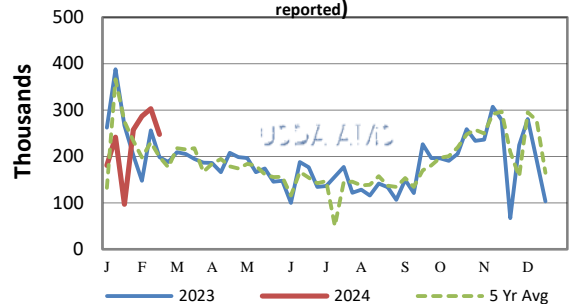
Compared to last week, steers and heifers in the North Central and South Central regions sold steady to 5.00 higher and 5.00 to 10.00 higher in the Southeast. Demand was good. It was noted in Missouri that buyers continue to aggressively try and fill orders before grass arrives. In Nebraska reporters noted cattlemen are just hoping to get back to normal in their herd size as several have had to sell off due to dry conditions over the last few years. In Oklahoma Demand remains good for calves as timely moisture and warm sunshine has pastures in good shape. The North central regions have had a bit of freeze/thaw which translates to dealing with mud on the cattle but it was noted in South Dakota that pen conditions have improved for the week. Feb CME Live Cattle closed 0.15 higher for the week at 184.775. March Feeder Cattle closed the wee 3.875 higher at 250.025. Live sales of negotiated cash fed cattle trade in the Southern Plains sold 2.00 lower at 180.00. In Nebraska, live sales sold steady to 2.00 lower at 180.00, while the dressed sales sold unevenly steady at 287.00. Choice boxed beef closed the week 2.16 higher at 296.20 while Select was 1.58 higher at 286.66 for the same period. Weekly Cattle Slaughter under federal inspection estimated at 608K, 14K less than last week and 17K less than a year ago. Auction volume this week included 58 percent weighing over 600 lbs and 44 percent heifers.

[More.....](#)

CME FEEDER CATTLE INDEX (\$/CWT)



NATIONWIDE REPORTED WEEKLY FEEDER CATTLE AUCTION RECEIPTS
(Receipts vary depending on the number of auctions reported)



REGIONAL WEIGHTED AVERAGE

FEEDER STEER PRICES

NORTH CENTRAL REGION

| Steers: | This Week | Last Week | Last Year |
|-------------|-----------|-----------|-----------|
| 600-700 lbs | \$286.81 | \$287.22 | \$206.09 |
| 700-800 lbs | \$257.38 | \$258.73 | \$190.79 |
| 800-900 lbs | \$239.00 | \$239.55 | \$181.47 |

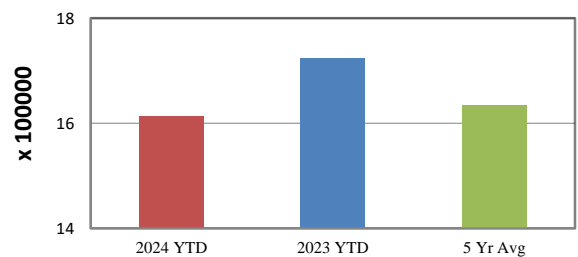
SOUTH CENTRAL REGION

| Steers: | This Week | Last Week | Last Year |
|-------------|-----------|-----------|-----------|
| 500-600 lbs | \$301.07 | \$298.40 | \$217.50 |
| 600-700 lbs | \$269.74 | \$268.07 | \$195.56 |
| 700-800 lbs | \$247.13 | \$246.21 | \$182.55 |

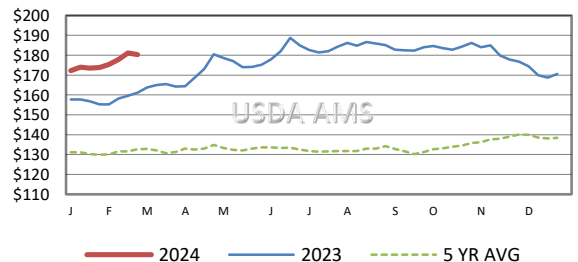
SOUTHEAST REGION

| Steers: | This Week | Last Week | Last Year |
|-------------|-----------|-----------|-----------|
| 400-500 lbs | \$314.02 | \$303.12 | \$212.88 |
| 500-600 lbs | \$280.52 | \$271.41 | \$197.81 |
| 600-700 lbs | \$251.98 | \$243.95 | \$181.78 |

YEAR TO DATE AUCTION RECEIPTS



5 AREA WEEKLY WEIGHTED AVERAGE SLTR STEER PRICE (\$/CWT)



USDA Livestock, Poultry, & Grain Market News

St. Joseph, Missouri

Phone: 816-676-7000



For detailed state-by-state feeder cattle quotes:

[National Feeder & Stocker Cattle Summary](#)

<http://www.ams.usda.gov/LSMarketNews>