



EGG MARKET NEWS REPORT

Monday, August 21, 2023

U.S. Department of Agriculture

Agricultural Marketing Service Livestock, Poultry & Grain Market News

[National Egg Review AMS_2733](#)

New York prices are up 4 cents for larger sizes and unchanged for Medium. Regional and California egg prices are unchanged for Jumbo, 5 to 17 cents higher for Extra Large, up 6 to 16 cents for Large, 1 to 2 cents higher for Medium, and up 1 cent for Small. The undertone is steady to firm. Demand is moderate to fairly good. Offerings and supplies are light to moderate. Market activity is moderate. Breaking stock offerings are light for the light to moderate demand. Light type fowl offerings are fully sufficient; processing schedules are normal to less than normal.

Prices to Retailers, Sales to Volume Buyers, USDA Grade A and Grade A, White Eggs in Cartons, Cents per Dozen, Unless Otherwise Noted

Delivered to Warehouse:

[Midwest Regional AMS_2845](#)

	Range	Mostly
EXTRA LARGE	128-137	131-134
LARGE	127-136	129-132
MEDIUM	100-109	102-105

[Northeast Regional AMS_2735](#)

	Range	Mostly
EXTRA LARGE	135-160	138-140
LARGE	129-143	134-138
MEDIUM	102-115	107-109

[South Central AMS_2846](#)

	Range	Mostly
EXTRA LARGE	156.5-165	158-161
LARGE	141.5-150	143-146
MEDIUM	112.5-121	114-117

[Southeast Regional AMS_2736](#)

	Range	Mostly
EXTRA LARGE	131-162	156-159
LARGE	127-145	139-142
MEDIUM	109.5-117	110-114

Delivered to Store Door:

[Midwest Regional AMS_2845](#)

	Range	Mostly
EXTRA LARGE	135-143	136-138
LARGE	133-141	134-136
MEDIUM	106-114	107-109

[New York AMS_2734](#)

	Range	Mostly
EXTRA LARGE	151-155	
LARGE	149-153	
MEDIUM	114-118	

(Fri) Prices to Consumers Major Chains, New York Metropolitan Area

	Range	Mostly
EXTRA LARGE	169-429	189-209
LARGE	149-399	179-399
MEDIUM	169-239	169-219

Iowa-Minnesota-Wisconsin - Prices Paid to Producers AMS_2845

	Range	Mostly
LARGE	113-123	117
MEDIUM	82-86	84
SMALL	44-50	

Midwest: IA, IL, IN, KY, MI, MN, OH, NE, ND, SD, WI, WV, western NY, & western PA; **Northeast:** CT, DC, DE, MA, MD, ME, NH, eastern NJ, eastern NY, PA, RI, northern VA, & VT; **South Central:** AR, AZ, CO, KS, LA, MO, NM, OK, & TX; **Southeast:** AL, GA, MS, NC, SC, eastern TN, & southern VA

[North Carolina AMS_3155](#) - Prices wtd avg, in small lots, nearby retail outlet.

	Mostly
EXTRA LARGE	167.70
LARGE	153.13
MEDIUM	123.51
SMALL	85.00

[Weekly New England Shell Eggs AMS_2739](#)

Prices paid per dozen Grade A brown eggs in cartons delivered store door.

	Ex Large	Large	Medium	Small
MAINE MOSTLY	178	160	106	100
NEW HAMPSHIRE MOSTLY	171-175	153-157	99-103	93-97
	173-174	155-156	101-102	95-96
RHODE ISLAND MOSTLY	174-181	156-163	102-109	96-103
	174	156	102	96
VERMONT MOSTLY	-	-	-	-

[USDA Wholesale Certified Organic Brown Shell Eggs AMS_2759](#)

Prices cents per carton delivered to first receivers

	Price Range	Mostly
Extra Large	doz.	
1/2 doz.	unquoted	
Large	doz.	
1/2 doz.		

Certified Organic are products grown and processed according to USDA's national organic standards and certified by USDA accredited State and private certification organizations. For more information, visit the National Organic Program

www.ams.usda.gov/NOPNationalOrganicProgramHome

[California AMS_2844](#)

Benchmark prices are unchanged for Jumbo, 5 cents higher for Extra Large, 6 cents higher for Large, 1 cent higher for Medium and Small. The undertone is steady to firm. Retail demand is moderate to good with best movement due to fill in into those areas that were projected to be affected by severe weather this past weekend. Demand into food service channels is light to moderate. Offerings are light to moderate. Supplies are generally moderate. Market activity is about moderate.

California: Shell egg marketer's benchmark price for negotiated egg sales of USDA Grade AA and Grade AA in cartons. This price does not reflect discounts or other contract terms.

	Range
JUMBO	242
EXTRA LARGE	202
LARGE	195
MEDIUM	140

(Fri) Southern California: Prices to Retailers, Sales to Volume Buyers, USDA Grade AA & Grade AA, White Eggs in Cartons, Delivered Store Door, Cents/Dozen

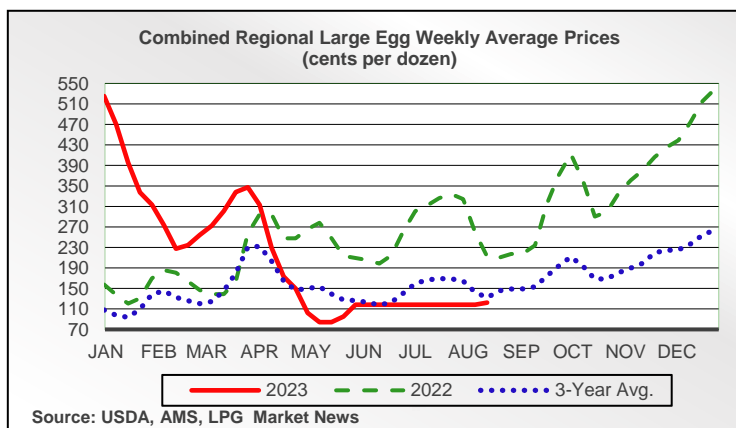
	Range
JUMBO	234-247
EXTRA LARGE	185-196
LARGE	176-187
MEDIUM	125-140

[Weekly Combined Regional AMS_2848](#)

Average prices on sales to volume buyers, delivered warehouse.

REGIONS	EX LARGE	LARGE	MEDIUM
NORTHEAST	123.00	120.00	106.00
SOUTHEAST	140.50	124.50	110.00
MIDWEST	116.50	114.50	101.50
SOUTH CENTRAL	142.50	128.50	113.50
COMBINED REGIONAL	131.16	122.17	108.02

Computed from simple weekly averages weighted by regional area populations



[National Weekly Shell Egg Inventory/AMS 1427](#)

Regions	Total Stocks on Hand Available for Marketing (30-dozen cases in thousands)	
Northeast	Total	164.2
	% Change	-10.9%
Southeast	Total	230.2
	% Change	-8.0%
Midwest	Total	512.7
	% Change	1.4%
South Central	Total	243.5
	% Change	9.6%
Southwest	Total	148.5
	% Change	-4.6%
Northwest	Total	66.3
	% Change	-17.2%
6-Area Total	Total	1,365.3
	% Change	-2.4%
Cases % Change		
Shell Egg Inventory	1,365.3	-2.4%
Breaking Stock Inventory	309.7	-2.6%
Total Inventory	1,675.0	-2.4%

Specialty/Organic/Cage Free:

Stocks on Hand to be Marketed as Specialty/Organic/Cage Free from totals above (30-dozen cases in thousands)

	6-Area Total	
Specialty	This Week	40.7
	% Change	-8.4%
Organic	This Week	125.3
	% Change	-0.9%
Cage Free	This Week	316.9
	% Change	-1.2%

1/ Cooperators normally have stocks on hand each Monday A.M. and must report in both the current and previous weeks conventional and specialty 3/ Specialty eggs include nutritionally enhanced and vegetarian-fed types. **Regional Definitions:** **Northeast** = CT, DE, MA, MD, ME, NH, NJ, NY, PA, RI, & VT; **Southeast** = AL, FL, GA, MS, NC, SC, TN, VA, & WV; **Midwest** = IA, IL, IN, KY, MI, MN, ND, NE, OH, SD, & WI; **South Central** = AR, AZ, CO, KS, LA, MO, NM, OK, TX, & UT; **Southwest** = CA & NV; **Northwest** = ID, MT, OR, WA, & WY.

[Shell Eggs Processed Under Federal Inspection/AMS 1665](#)

Total Production in Thousands of Pounds W/E 8/12/2023						
TOTAL PRODUCTION	Cases Broken	Liquid Whole	Liquid White	Liquid Yolk	Dried	Inedible
CW	1,605,656	38,389	14,820	7,280	2,416	4,496
PW	1,597,095	37,732	16,040	7,806	2,527	4,509
% Change	0.5 %	1.7 %	-7.6 %	-6.7 %	-4.4 %	-0.3 %
LY	1,538,447	36,768	14,774	6,827	1,451	4,381
% Change	4.4 %	4.4 %	0.3 %	6.6 %	66.5 %	2.6 %
2023 YTD	47,724,845	1,176,114	444,471	222,733	63,867	139,436
2022 YTD	48,015,049	1,159,476	454,724	218,056	65,751	146,991
% Change	-0.6 %	1.4 %	-2.3 %	2.1 %	-2.9 %	-5.1 %

Average Yields Per Case		
	Yield with Inedible	Yield W/O Inedible
CW	40.47	37.67
PW	41.38	38.56
LY	40.79	37.94
2023 YTD	41.55	38.62
2022 YTD	41.22	38.16

In-Line Production in Thousands of Pounds				
	In-line Cases Broken	In-line % of Total Cases Broken	In-line Liquid Whole Egg	In-line % of Total Liquid Whole Egg
CW	836,350	52.1%	22,005	57.3%
PW	830,748	52.0%	21,373	56.6%
LY	733,721	47.7%	19,949	54.3%
2023 YTD	24,778,619	51.9%	653,291	55.5%
2022 YTD	24,035,164	50.1%	604,004	52.1%
% Change	3.1%		8.2%	

[Weekly National Egg Products/AMS 2842](#) f.o.b. Shipper Dock Basis; Wholesale prices; cents per pound unless otherwise noted.

Liquid Eggs					
Certified liquid whole pricing is lower, while the balance of liquid egg product prices are too few trades to report. The undertone is steady to instances firm for whole egg, steady for whites and yolk. Demand remains fairly good to good for whole egg, moderate to at times fairly good for whites, and light to moderate for yolk. Offerings are reported as light to moderate. Market activity is moderate to instances active.					
Non-certified in trucklots; current trading for delivery within 14 days.					
Class	Current Week Range	Loads	Wtd Avg	July Loads	Averages Wtd Avg
Whole	TFEWR			21	67.95
Whites	TFEWR			25	74.08
Yolk	TFEWR			7	172.00
Certified in trucklots; current trading for delivery within 14 days.					
Class	Current Week Range	Loads	Wtd Avg	July Loads	Averages Wtd Avg
Whole	67.00 - 72.00	13	69.08	60	66.58
Whites	TFEWR			1	78.50
Yolk	TFEWR			3	172.00
Frozen Eggs					
Prices of frozen egg products are trending steady to higher for whole, steady to slightly lower for whites, and steady for sugar and salt yolk. The undertone is mixed. Demand is moderate, with an increase in spot load inquiries. Offerings and supplies are light to moderate. Market activity is moderate.					

Packed in 30-pound containers; Prices in cents per pound					
Trucklot	Current Week Range	Mostly	July This Month	Averages Last Month	
Whole	90.00 - 115.00	-	104.00	96.13	
Whites	103.00 - 135.00	-	118.38	122.88	
Sugar Yolk ^{1/}	175.00 - 215.00	-	200.00	205.00	
Salt Yolk ^{1/}	175.00 - 215.00	-	200.00	203.75	

1/ Minimum 43% solids.

Dried Eggs	
Dried egg product prices are steady to higher for whole, steady for yolk, and too few to report for albumen. The undertone is steady to lower. Demand is moderate and centers around 4th quarter contractual needs. Offerings are moderate and held with confidence. Supplies are moderate. Market activity is slow to moderate	

Prices in dollars per pound; in containers; includes trucklot and less-than-trucklot volumes.					
Class	Current Week Range	Mostly	July This Month	Averages Last Month	
Whole	6.00 - 8.25	-	6.91	7.09	
Yolk	4.25 - 5.80	-	5.70	5.85	
Albumen ^{2/}	TFEWR -	-	TFEWR	TFEWR	

2/ Spray Dried.

Central and Eastern Region Breaking Stock			
Prices in cents/doz., delivered to breakers, 48 lb. minimum net weight per 30 dozen case, eggs from table egg layers. Packaging may vary.			
Central Region/AMS 2841		Eastern Region/AMS 2730	
Breaking Stock			
Range	84-90	Range	80-86
Mostly		Mostly	80-82
Checks & Undergrades			
Range	74-84	Range	74-76
Mostly	74-76	Mostly	
Central States Area: AR, CO, IA, IL, IN, KS, LA, MI, MN, MO, NM, ND, NE, OH, OK, SD, TX, & WI		Eastern States Area: AL, CT, DE, FL, GA, KY, ME, MD, MA, MS, NC, NH, NJ, NY, PA, RI, SC, TN, VT, VA, & WV	

[Daily 5-Day Weighted Average Trailer Load Egg Sales](#)

(CENTS/DOZ)
NATIONAL TRADING FOR AUGUST 12, 2023-AUGUST 18, 2023
COURTESY OF U.S.D.A. FEDERAL/STATE MARKET NEWS

CURRENT LOADS 63.00 FUTURE LOADS 42.00 TOTAL LOADS 105.00

CLASS	SE		NE		MW		LOADS
	ORG	DST	ORG	DST	ORG	DST	
GNR W 1	--	107.67	--	--	--	--	11.00
GL W XL	--	134.60	126.00	131.50	124.71	--	24.00
GL W LG	--	127.00	120.00	126.25	119.57	120.00	47.00
GL W MD	--	--	74.00	79.33	76.50	80.00	7.00
NRBS - 48	--	--	--	--	86.53	88.15	22.00
NRBS - 42	--	--	--	--	80.00	81.33	3.00

CLASS	SC		NW		SW		LOADS
	ORG	DST	ORG	DST	ORG	DST	
GL W XL	148.00	148.56	--	150.00	--	156.08	17.00
GL W LG	145.00	127.20	--	--	138.00	151.30	40.00
GL W MD	--	--	--	--	--	90.00	3.00

Weighted average prices are listed for various classes priced by origin and/or destination for 6 regions. The loads column reflects total loads reported and includes loads with prices to be determined later. NRBS categories represent net weight - material may or may not be included.
Load movement represents total movement within 6 regions.

[Live Spent Light Fowl](#)

Prices are trending steady for the light demand. Offerings are fully sufficient for current needs. Processing schedules are normal to less than normal. Finished product sales are moderate. Market activity is slow. The majority price for removal cost are unchanged at 0-5 cents per head.

(live hens are predominately egg-layers averaging about 3.5 lbs. live weight per bird.)
Eastern region = AL, CT, DE, GA, KY, MA, MD, ME, MS, NC, NH, NJ, NY, PA, RI, SC, TN, VA, VT, and WV; **North Central** = IA, IL, IN, MI, MN, ND, NE, OH, SD, WI; **South Central** = AR, CO, KS, LA, MO, NM, OK, TX.

[Weekly Cold Storage Holdings](#) -

~in Selected Centers, Includes Government Stocks in Thousands of Pounds~

Frozen Eggs 8/14/2023	8/1/2023	Change from First of the Month in Total Pounds	% Change from First of the Month
2,545	2,515	30	1%

Cold Storage Holdings - Pacific Coast

Frozen Eggs	8/14/2023	08/07/2023	08/15/2022
Pacific w/out Denver:	6	6	8
Los Angeles:	0	0	0

[National Retail Egg Purchases](#)

Data for the week ending Sat. Aug 12, 2023

	CARTONED	LOOSE	TOTAL
Cases Purchased			
Present Week:	288,965	81,901	370,866
% Change From The			
Prior Week:	-25%	2%	-20%

Comparison figures are compiled on a matched plant basis. Purchases are 30 dozen cases or equivalent.

[Canadian Eggs](#)

Minimum prices for producers' f.o.b. farm as set by Ontario egg producers (Canadian dollars per dozen) as reported by Agriculture and Agri-Food Canada, AISD, AID, Poultry Section

Data is for the week of Aug 07, 2023.

GRADE A	XLG	LRG	MED	SMALL
	2.59	2.59	2.29	1.91

Source: [Agriculture and Agri-Food Canada](#)