



Cattle on Feed

ISSN: 1948-9080

Released December 19, 2025, by the National Agricultural Statistics Service (NASS), Agricultural Statistics Board, United States Department of Agriculture (USDA).

United States Cattle on Feed Down 2 Percent

Cattle and calves on feed for the slaughter market in the United States for feedlots with capacity of 1,000 or more head totaled 11.7 million head on December 1, 2025. The inventory was 2 percent below December 1, 2024.

Placements in feedlots during November totaled 1.60 million head, 11 percent below 2024. Net placements were 1.54 million head. Placements were the lowest for November since the series began in 1996. During November, placements of cattle and calves weighing less than 600 pounds were 435,000 head, 600-699 pounds were 375,000 head, 700-799 pounds were 320,000 head, 800-899 pounds were 255,000 head, 900-999 pounds were 130,000 head, and 1,000 pounds and greater were 80,000 head.

Marketings of fed cattle during November totaled 1.52 million head, 12 percent below 2024. Marketings were the second lowest for November since the series began in 1996.

Other disappearance totaled 53,000 head during November, 4 percent below 2024.

Cattle on Feed Inventory, Placements, Marketings, and Other Disappearance on 1,000+ Capacity Feedlots – United States: December 1, 2024 and 2025

Item	2024	2025	Percent of previous year
	(1,000 head)	(1,000 head)	(percent)
On feed November 1	11,966	11,706	98
Placed on feed during November	1,796	1,595	89
Fed cattle marketed during November	1,725	1,521	88
Other disappearance during November	55	53	96
On feed December 1	11,982	11,727	98

Cattle on Feed Inventory, Placements, Marketings, and Other Disappearance on 1,000+ Capacity Feedlots – United States: November 1, 2024 and 2025

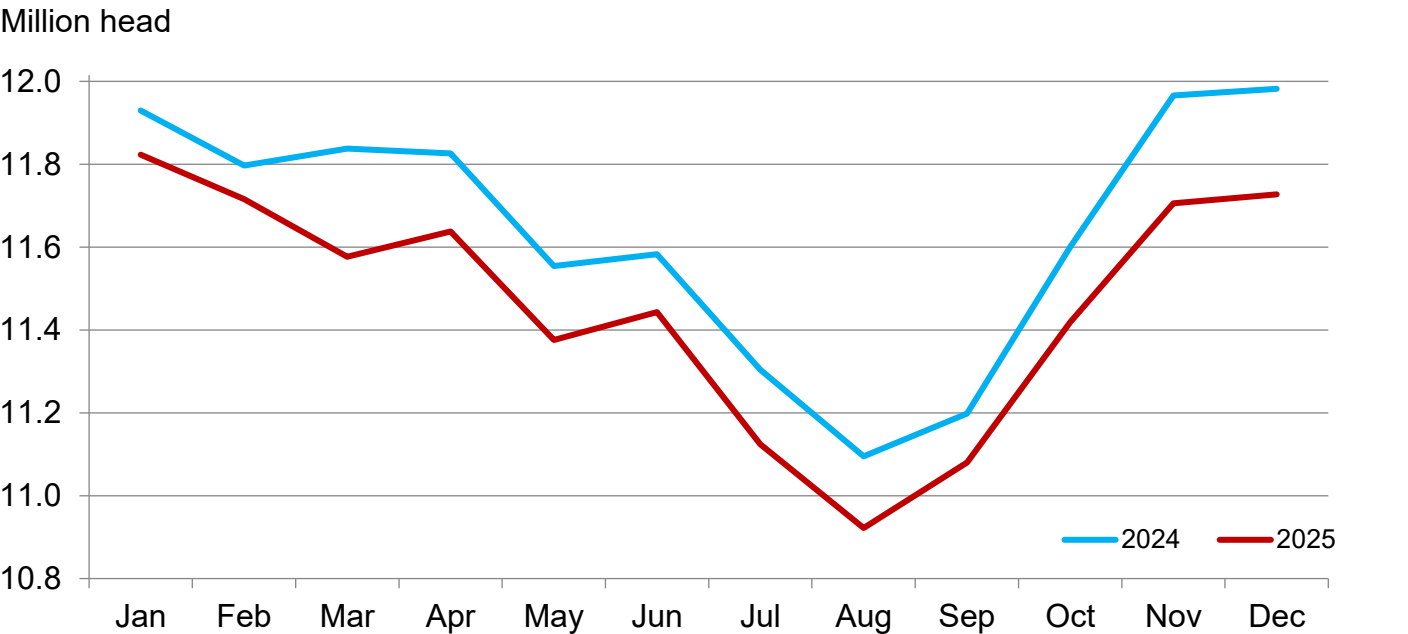
Item	2024	2025	Percent of previous year
	(1,000 head)	(1,000 head)	(percent)
On feed October 1	11,600	11,418	98
Placed on feed during October	2,266	2,040	90
Fed cattle marketed during October	1,845	1,698	92
Other disappearance during October	55	54	98
On feed November 1	11,966	11,706	98

Cattle on Feed Inventory on 1,000+ Capacity Feedlots by Month – States and United States: 2024 and 2025

State	December 1, 2024	November 1, 2025	December 1, 2025		
			Inventory	Percent of previous year	Percent of previous month
	(1,000 head)	(1,000 head)	(1,000 head)	(percent)	(percent)
Arizona	232	211	212	91	100
California	510	485	495	97	102
Colorado	1,060	920	910	86	99
Idaho	330	345	345	105	100
Iowa	660	700	700	106	100
Kansas	2,420	2,460	2,440	101	99
Minnesota	105	(NA)	(NA)	(NA)	(NA)
Nebraska	2,600	2,640	2,670	103	101
Oklahoma	365	335	340	93	101
South Dakota	235	235	255	109	109
Texas	2,880	2,630	2,610	91	99
Washington	260	295	295	113	100
Other States	325	450	455	140	101
United States	11,982	11,706	11,727	98	100

(NA) Not available.

Cattle on Feed Inventory on 1,000+ Capacity Feedlots – United States

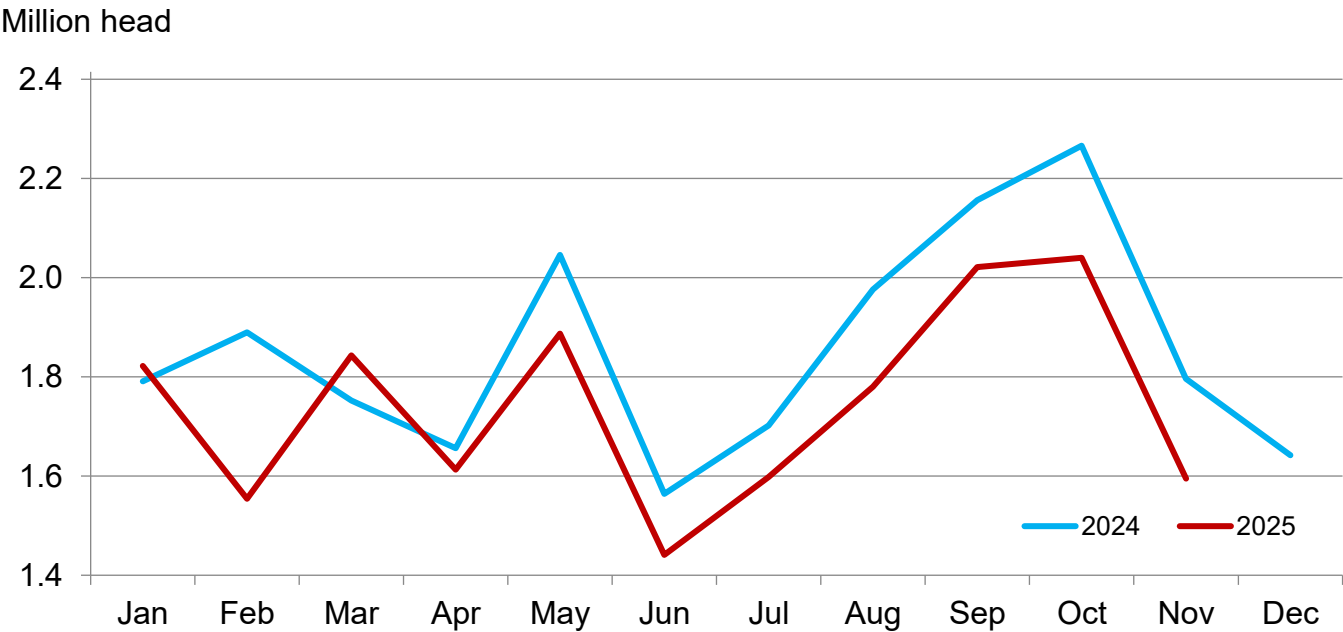


Cattle Placed on Feed on 1,000+ Capacity Feedlots by Month – States and United States: 2024 and 2025

State	During November 2024	During October 2025	During November 2025		
			Placements	Percent of previous year	Percent of previous month
	(1,000 head)	(1,000 head)	(1,000 head)	(percent)	(percent)
Arizona	22	16	16	73	100
California	52	62	58	112	94
Colorado	135	135	105	78	78
Idaho	45	53	46	102	87
Iowa	91	96	94	103	98
Kansas	400	455	320	80	70
Minnesota	15	(NA)	(NA)	(NA)	(NA)
Nebraska	510	560	460	90	82
Oklahoma	44	62	41	93	66
South Dakota	56	69	58	104	84
Texas	345	410	285	83	70
Washington	34	49	39	115	80
Other States	47	73	73	155	100
United States	1,796	2,040	1,595	89	78

(NA) Not available.

Cattle Placed on 1,000+ Capacity Feedlots – United States



Cattle Placed on Feed by Weight Group on 1,000+ Capacity Feedlots and Month – States and United States: 2024 and 2025

State	During November 2024							
	Under 600 lbs	600-699 lbs	700-799 lbs	800-899 lbs	900+ lbs ¹	900-999 lbs	1,000+ lbs	Total
	(1,000 head)	(1,000 head)	(1,000 head)	(1,000 head)	(1,000 head)	(1,000 head)	(1,000 head)	(1,000 head)
Colorado	40	30	25	20	20	(D)	(D)	135
Kansas	60	95	120	80	45	(D)	(D)	400
Nebraska	100	120	95	90	105	(D)	(D)	510
Texas	140	85	70	35	15	(D)	(D)	345
Other States ...	155	90	65	51	45	(D)	(D)	406
United States ..	495	420	375	276	(X)	145	85	1,796

State	During October 2025							
	Under 600 lbs	600-699 lbs	700-799 lbs	800-899 lbs	900+ lbs ¹	900-999 lbs	1,000+ lbs	Total
	(1,000 head)	(1,000 head)	(1,000 head)	(1,000 head)	(1,000 head)	(1,000 head)	(1,000 head)	(1,000 head)
Colorado	30	25	25	30	25	(D)	(D)	135
Kansas	70	95	140	95	55	(D)	(D)	455
Nebraska	115	105	95	120	125	(D)	(D)	560
Texas	140	95	105	55	15	(D)	(D)	410
Other States ...	160	100	80	85	55	(D)	(D)	480
United States ..	515	420	445	385	(X)	195	80	2,040

State	During November 2025							
	Under 600 lbs	600-699 lbs	700-799 lbs	800-899 lbs	900+ lbs ¹	900-999 lbs	1,000+ lbs	Total
	(1,000 head)	(1,000 head)	(1,000 head)	(1,000 head)	(1,000 head)	(1,000 head)	(1,000 head)	(1,000 head)
Colorado	30	25	20	15	15	(D)	(D)	105
Kansas	45	75	90	70	40	(D)	(D)	320
Nebraska	95	110	80	80	95	(D)	(D)	460
Texas	100	70	65	35	15	(D)	(D)	285
Other States ...	165	95	65	55	45	(D)	(D)	425
United States ..	435	375	320	255	(X)	130	80	1,595

(D) Withheld to avoid disclosing data for individual operations.

(X) Not applicable.

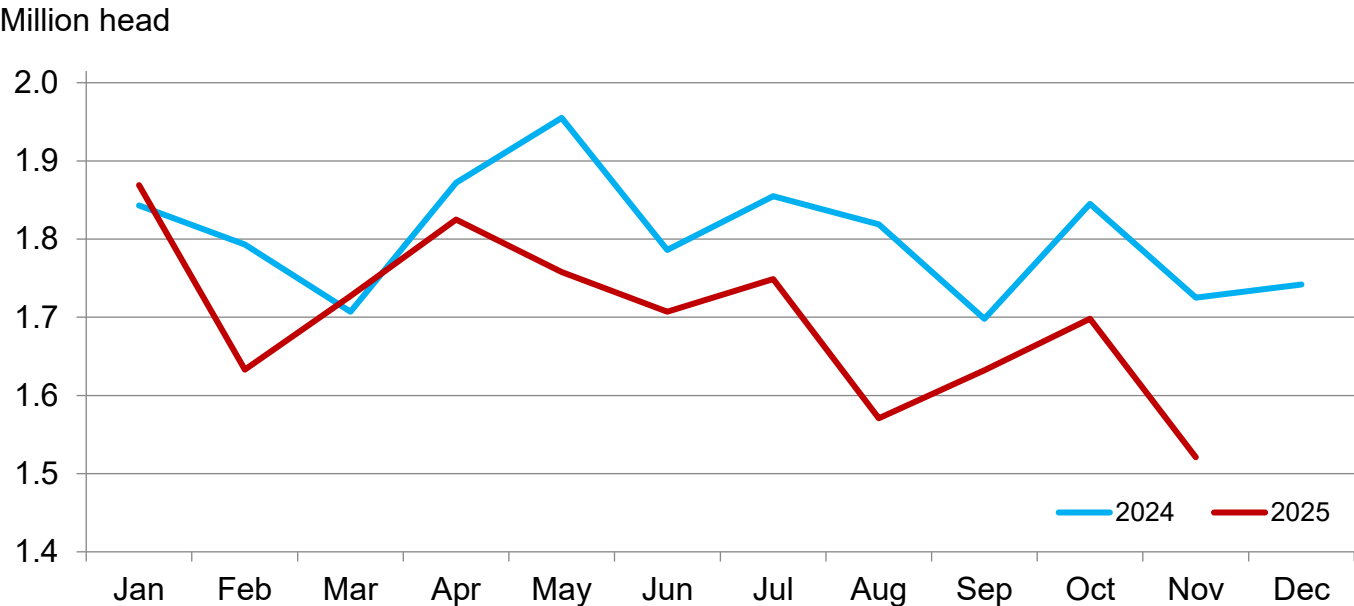
¹ The 900 pounds and greater weight group is the sum of 900-999 pounds and 1,000 pounds and greater weight groups.

Cattle Marketed on 1,000+ Capacity Feedlots by Month – States and United States: 2024 and 2025

State	During November 2024	During October 2025	During November 2025		
			Marketings	Percent of previous year	Percent of previous month
	(1,000 head)	(1,000 head)	(1,000 head)	(percent)	(percent)
Arizona	20	17	14	70	82
California	51	51	44	86	86
Colorado	130	130	110	85	85
Idaho	44	52	45	102	87
Iowa	100	85	92	92	108
Kansas	380	395	330	87	84
Minnesota	14	(NA)	(NA)	(NA)	(NA)
Nebraska	480	470	420	88	89
Oklahoma	42	46	35	83	76
South Dakota	45	33	37	82	112
Texas	330	335	290	88	87
Washington	43	33	38	88	115
Other States	46	51	66	143	129
United States	1,725	1,698	1,521	88	90

(NA) Not available.

Cattle Marketed on 1,000+ Capacity Feedlots – United States



Cattle Other Disappearance on 1,000+ Capacity Feedlots by Month – States and United States: 2024 and 2025

State	During November 2024	During October 2025	During November 2025		
			Other disappearance	Percent of previous year	Percent of previous month
	(1,000 head)	(1,000 head)	(1,000 head)	(percent)	(percent)
Arizona	1	1	1	100	100
California	6	6	4	67	67
Colorado	5	5	5	100	100
Idaho	1	1	1	100	100
Iowa	1	1	2	200	200
Kansas	10	10	10	100	100
Minnesota	1	(NA)	(NA)	(NA)	(NA)
Nebraska	10	10	10	100	100
Oklahoma	2	1	1	50	100
South Dakota	1	1	1	100	100
Texas	15	15	15	100	100
Washington	1	1	1	100	100
Other States	1	2	2	200	100
United States	55	54	53	96	98

(NA) Not available.

Terms and Definitions of Cattle on Feed Estimates

Cattle on feed are steers and heifers being fed a ration of grain, silage, hay and/or protein supplement for slaughter market that are expected to produce a carcass that will grade select or better. It excludes cattle being "backgrounded only" for later sale as feeders or later placement in another feedlot.

Placements are steers and heifers put into a feedlot, fed a ration which will produce a carcass that will grade select or better, and are intended for the slaughter market.

Marketings are steers and heifers shipped out of feedlots to a slaughter market.

Other disappearance includes death loss, movement from feedlots to pasture, and shipments to other feedlots for further feeding.

Statistical Methodology

Survey Procedures: During January and July all known feedlots in the United States with capacity of 1,000 or more head are surveyed to provide data for cattle on feed estimates. During the other months, all known feedlots from 16 States are surveyed. The 16 States account for approximately 98 percent of the cattle on feed in feedlots with capacity of 1,000 or more head. Individual State estimates are published monthly for 11 of the 16 States. In 2025, data collected from the remaining 5 States are used to establish the "Other States" estimates. These 5 States include Illinois, New Mexico, Oregon, Wyoming and in 2025, Minnesota was added. The "Other States" category represents all cattle on feed with a capacity of 1,000 or more head for the rest of the United States.

Estimating Procedures: These cattle on feed estimates were prepared by the Agricultural Statistics Board after reviewing recommendations and analysis submitted by Regional Field Offices. Regional and State survey data were reviewed for reasonableness with each other and with estimates from the previous month when establishing the current estimates.

Revision Policy: Revisions to previous estimates are made to improve month-to-month relationships. Estimates for the previous month are subject to revision in all States each month when current estimates are made. In February, all monthly estimates for the previous year, and the number of feedlots and annual marketings from two years ago are reviewed and subject to revisions. The reviews are primarily based on slaughter data, state check-off or brand data, and any other data that may have been received after the original estimate was made. Estimates will also be reviewed after data from the *Census of Agriculture* are available. No revisions will be made after that date and estimates become final.

Reliability: Since all 1,000+ capacity cattle on feed operators in every State are not included in the monthly survey, survey estimates are subject to sampling variability. Survey results are also subject to non-sampling errors such as omissions, duplications, and mistakes in reporting, recording, and processing the data. The effects of these errors cannot be measured directly. They are minimized through rigid quality controls in the data collection process and through a careful review of all reported data for consistency and reasonableness.

To assist users in evaluating the reliability of estimates in this report, the "**Root Mean Square Error**" is shown for selected items in the table on the following page. The "Root Mean Square Error" is a statistical measure based on past performance and is computed using the differences between first and latest estimates. The "Root Mean Square Error" for cattle on feed inventory estimates over the past 24 months is 0.0 percent. This means that chances are 2 out of 3 that the final estimate will not be above or below the current estimate of 11.7 million head by more than 0.0 percent. Chances are 9 out of 10 that the difference will not exceed 0.1 percent.

The table on the following page shows a 24-month record of the range of differences between first and latest estimates for selected items. Using estimates of number on feed as an example, changes between the first estimate and the latest estimate during the past 24 months have averaged 2,000 head, ranging from 0 to 20,000 head. During this period the initial estimate has been above the latest estimate 1 time and has been below the latest estimate 3 times. This does not imply that the initial estimate is likely to understate or overstate final inventory.

Reliability of Monthly Cattle on Feed Estimates

[Based on data for the past 24 months]

Item	Root mean square error	90 percent confidence level	Difference between first and latest estimate				
			Average	Smallest	Largest	Months	
						Below latest	Above latest
	(percent)	(percent)	(1,000)	(1,000)	(1,000)	(number)	(number)
On feed	0.0	0.1	2	0	20	3	1
Placements	0.2	0.4	2	0	20	5	4
Marketings	0.0	0.1	0	0	2	4	2

Information Contacts

Listed below are the commodity specialists in the Livestock Branch of the National Agricultural Statistics Service to contact for additional information. E-mail inquiries may be sent to nass@usda.gov.

Travis Averill, Chief, Livestock Branch	(202) 692-0069
Sherry Bertramsen – Livestock Slaughter	(202) 690-8632
Tiffany Byrne – Dairy Products.....	(651) 440-7789
Ryan Cowen – Cattle, Cattle on Feed.....	(202) 720-3040
Kim DaPra – Milk Production	(202) 720-3278
Fatema Haque – Poultry Slaughter, Turkey Hatchery, Turkeys Raised	(202) 720-3244
Derron Martin – Catfish, Census of Aquaculture, Egg Products, Mink, Trout	(202) 690-3237
Ralph Mondesir – Hogs and Pigs	(202) 720-3106
Suzanne Richards – Cost of Pollination, Honey, Honey Bee Colonies, Sheep and Goats	(202) 720-4448
Shulonda Shaw – Capacity of Refrigerated Warehouses, Cold Storage.....	(202) 720-3240
Autumn Stone – Layers, Eggs	(202) 690-3676
Takiyah Walker – Broiler Hatchery, Chicken Hatchery	(202) 720-6147

Access to NASS Reports

For your convenience, you may access NASS reports and products the following ways:

- All reports are available electronically, at no cost, on the NASS web site: www.nass.usda.gov.
- The national specific reports are available via a free e-mail subscription. To set-up this free subscription, visit www.nass.usda.gov and click on “National” in upper right corner above “search” box to create an account and select the reports you would like to receive.
- Economics, Statistics, and Market Information (ESMIS) – National Agricultural Library (NAL) website houses NASS’s and other agency archived reports at <https://esmis.nal.usda.gov>. All email subscriptions containing reports will be sent from <https://esmis.nal.usda.gov>. To receive the reports via e-mail, you will have to go to the website, create a new account and subscribe to the reports. You should whitelist notifications@esmis.nal.usda.gov in your email client to avoid the emails going into spam/junk folders.

For more information on NASS surveys and reports, call the NASS Agricultural Statistics Hotline at (800) 727-9540, 7:30 a.m. to 4:00 p.m. ET, or e-mail: nass@usda.gov.

If you have specific questions you would like an expert to respond to, please visit our “Ask A Specialist” website at www.nass.usda.gov/Contact_Us/Ask_a_Specialist.

In accordance with Federal civil rights law and U.S. Department of Agriculture (USDA) civil rights regulations and policies, the USDA, its Agencies, offices, and employees, and institutions participating in or administering USDA programs are prohibited from discriminating based on race, color, national origin, religion, sex, disability, age, marital status, family/parental status, income derived from a public assistance program, political beliefs, or reprisal or retaliation for prior civil rights activity, in any program or activity conducted or funded by USDA (not all bases apply to all programs). Remedies and complaint filing deadlines vary by program or incident.

Persons with disabilities who require alternative means of communication for program information (e.g., Braille, large print, audiotape, American Sign Language, etc.) should contact the responsible Agency or USDA's TARGET Center at (202) 720-2600 (voice and TTY) or contact USDA through the Federal Relay Service at (800) 877-8339. Additionally, program information may be made available in languages other than English.

To file a program discrimination complaint, complete the USDA Program Discrimination Complaint Form, AD-3027, found online at [How to File a Program Discrimination Complaint](#) and at any USDA office or write a letter addressed to USDA and provide in the letter all of the information requested in the form. To request a copy of the complaint form, call (866) 632-9992. Submit your completed form or letter to USDA by: (1) mail: U.S. Department of Agriculture, Office of the Assistant Secretary for Civil Rights, 1400 Independence Avenue, SW, Washington, D.C. 20250-9410; (2) fax: (202) 690-7442; or (3) email: program.intake@usda.gov.

USDA is an equal opportunity provider, employer, and lender.



U.S. DEPARTMENT OF AGRICULTURE

Save the Date
USDA's 102nd Annual
Agricultural *Hybrid*
Outlook Forum
February 19-20, 2026
Crystal Gateway Marriott, Arlington VA

