



Cattle on Feed

ISSN: 1948-9080

Released June 18, 2026, by the National Agricultural Statistics Service (NASS), Agricultural Statistics Board, United States Department of Agriculture (USDA).

United States Cattle on Feed Up 2 Percent

Cattle and calves on feed for the slaughter market in the United States for feedlots with capacity of 1,000 or more head totaled 11.7 million head on June 1, 2026. The inventory was 2 percent above June 1, 2025.

Placements in feedlots during May totaled 1.70 million head, 10 percent below 2025. Net placements were 1.65 million head. During May, placements of cattle and calves weighing less than 600 pounds were 320,000 head, 600-699 pounds were 240,000 head, 700-799 pounds were 400,000 head, 800-899 pounds were 444,000 head, 900-999 pounds were 225,000 head, and 1,000 pounds and greater were 75,000 head.

Marketings of fed cattle during May totaled 1.55 million head, 12 percent below 2025. Marketings were the second lowest for May since the series began in 1996.

Other disappearance totaled 55,000 head during May, 11 percent below 2025.

Cattle on Feed Inventory, Placements, Marketings, and Other Disappearance on 1,000+ Capacity Feedlots – United States: June 1, 2025 and 2026

Item	2025	2026	Percent of previous year
	(1,000 head)	(1,000 head)	(percent)
On feed May 1	11,376	11,584	102
Placed on feed during May	1,887	1,704	90
Fed cattle marketed during May	1,758	1,551	88
Other disappearance during May	62	55	89
On feed June 1	11,443	11,682	102

Cattle on Feed Inventory, Placements, Marketings, and Other Disappearance on 1,000+ Capacity Feedlots – United States: May 1, 2025 and 2026

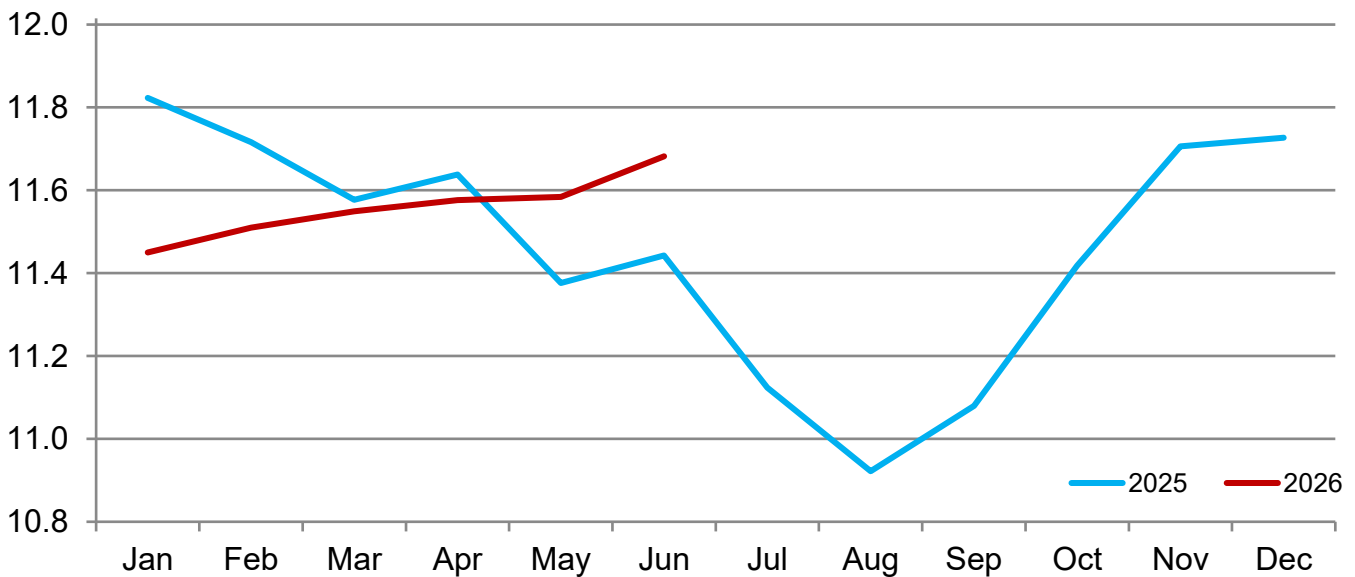
Item	2025	2026	Percent of previous year
	(1,000 head)	(1,000 head)	(percent)
On feed April 1	11,638	11,576	99
Placed on feed during April	1,613	1,702	106
Fed cattle marketed during April	1,825	1,642	90
Other disappearance during April	50	52	104
On feed May 1	11,376	11,584	102

Cattle on Feed Inventory on 1,000+ Capacity Feedlots by Month – States and United States: 2025 and 2026

State	June 1, 2025	May 1, 2026	June 1, 2026		
			Inventory	Percent of previous year	Percent of previous month
	(1,000 head)	(1,000 head)	(1,000 head)	(percent)	(percent)
Arizona	233	219	217	93	99
California	490	495	510	104	103
Colorado	920	920	940	102	102
Idaho	330	355	350	106	99
Iowa	680	680	680	100	100
Kansas	2,350	2,370	2,420	103	102
Nebraska	2,560	2,640	2,630	103	100
Oklahoma	335	335	345	103	103
South Dakota	220	245	235	107	96
Texas	2,630	2,580	2,610	99	101
Washington	260	270	275	106	102
Other States	435	475	470	108	99
United States	11,443	11,584	11,682	102	101

Cattle on Feed Inventory on 1,000+ Capacity Feedlots – United States

Million head

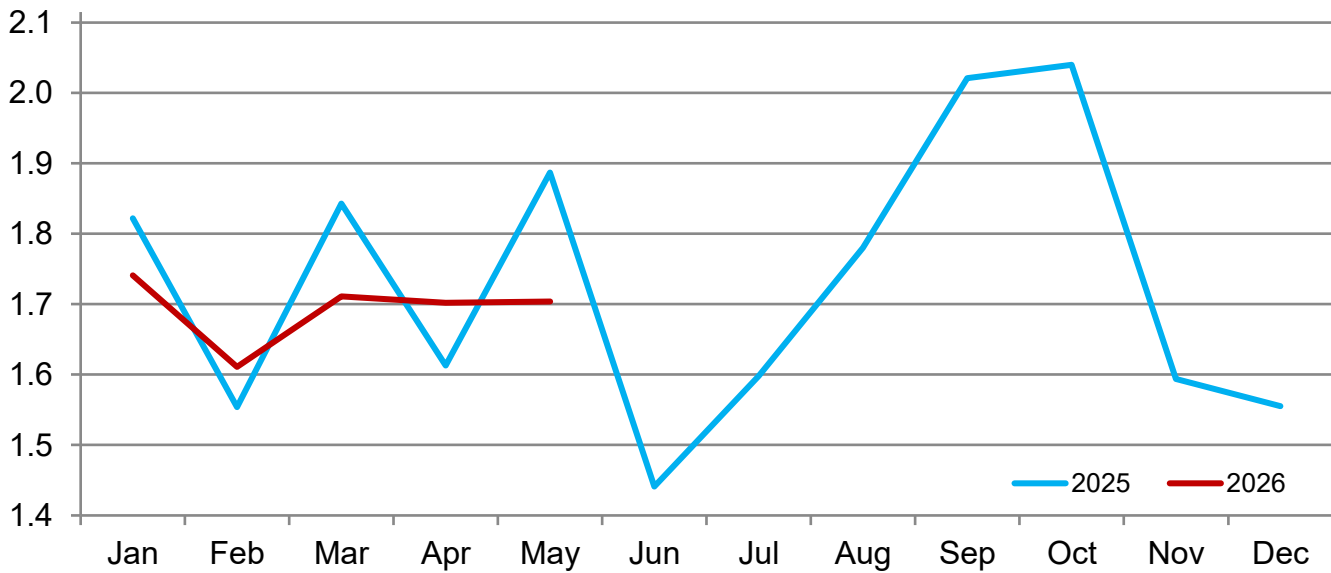


Cattle Placed on Feed on 1,000+ Capacity Feedlots by Month – States and United States: 2025 and 2026

State	During May 2025 (1,000 head)	During April 2026 (1,000 head)	During May 2026		
			Placements (1,000 head)	Percent of previous year (percent)	Percent of previous month (percent)
Arizona	22	20	20	91	100
California	62	53	65	105	123
Colorado	120	140	140	117	100
Idaho	42	45	42	100	93
Iowa	74	89	77	104	87
Kansas	470	400	420	89	105
Nebraska	495	435	410	83	94
Oklahoma	58	49	54	93	110
South Dakota	24	31	23	96	74
Texas	420	335	350	83	104
Washington	42	44	45	107	102
Other States	58	61	58	100	95
United States	1,887	1,702	1,704	90	100

Cattle Placed on 1,000+ Capacity Feedlots – United States

Million head



Cattle Placed on Feed by Weight Group on 1,000+ Capacity Feedlots and Month – States and United States: 2025 and 2026

State	During May 2025							
	Under 600 lbs	600-699 lbs	700-799 lbs	800-899 lbs	900+ lbs ¹	900-999 lbs	1,000+ lbs	Total
	(1,000 head)	(1,000 head)	(1,000 head)	(1,000 head)	(1,000 head)	(1,000 head)	(1,000 head)	(1,000 head)
Colorado	20	20	30	30	20	(D)	(D)	120
Kansas	55	75	140	130	70	(D)	(D)	470
Nebraska	40	50	105	165	135	(D)	(D)	495
Texas	120	75	105	90	30	(D)	(D)	420
Other States ...	100	55	70	102	55	(D)	(D)	382
United States ..	335	275	450	517	(X)	230	80	1,887
State	During April 2026							
	Under 600 lbs	600-699 lbs	700-799 lbs	800-899 lbs	900+ lbs ¹	900-999 lbs	1,000+ lbs	Total
	(1,000 head)	(1,000 head)	(1,000 head)	(1,000 head)	(1,000 head)	(1,000 head)	(1,000 head)	(1,000 head)
Colorado	25	25	30	35	25	(D)	(D)	140
Kansas	45	60	120	110	65	(D)	(D)	400
Nebraska	30	45	100	150	110	(D)	(D)	435
Texas	120	60	70	60	25	(D)	(D)	335
Other States ...	110	55	70	102	55	(D)	(D)	392
United States ..	330	245	390	457	(X)	210	70	1,702
State	During May 2026							
	Under 600 lbs	600-699 lbs	700-799 lbs	800-899 lbs	900+ lbs ¹	900-999 lbs	1,000+ lbs	Total
	(1,000 head)	(1,000 head)	(1,000 head)	(1,000 head)	(1,000 head)	(1,000 head)	(1,000 head)	(1,000 head)
Colorado	25	20	35	35	25	(D)	(D)	140
Kansas	50	65	120	115	70	(D)	(D)	420
Nebraska	35	40	90	130	115	(D)	(D)	410
Texas	110	60	85	65	30	(D)	(D)	350
Other States ...	100	55	70	99	60	(D)	(D)	384
United States ..	320	240	400	444	(X)	225	75	1,704

(D) Withheld to avoid disclosing data for individual operations.

(X) Not applicable.

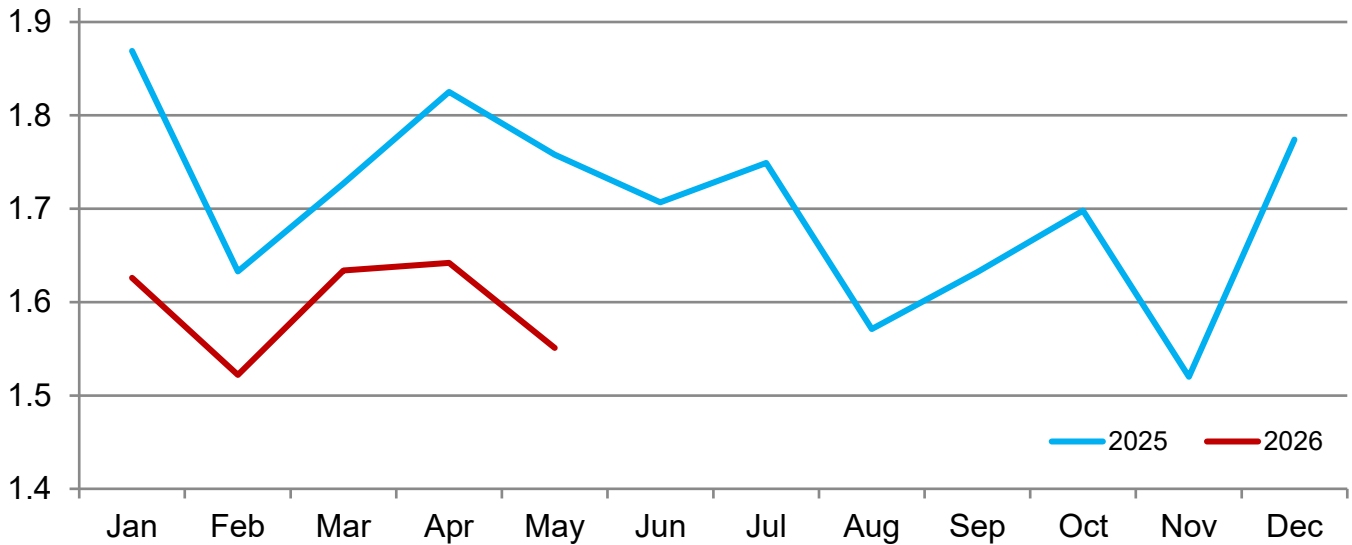
¹ The 900 pounds and greater weight group is the sum of 900-999 pounds and 1,000 pounds and greater weight groups.

Cattle Marketed on 1,000+ Capacity Feedlots by Month – States and United States: 2025 and 2026

State	During May 2025	During April 2026	During May 2026		
			Marketings	Percent of previous year	Percent of previous month
	(1,000 head)	(1,000 head)	(1,000 head)	(percent)	(percent)
Arizona	19	26	21	111	81
California	51	59	46	90	78
Colorado	150	130	115	77	88
Idaho	46	42	46	100	110
Iowa	72	97	75	104	77
Kansas	400	380	360	90	95
Nebraska	470	425	405	86	95
Oklahoma	47	47	43	91	91
South Dakota	37	30	31	84	103
Texas	370	305	310	84	102
Washington	36	43	39	108	91
Other States	60	58	60	100	103
United States	1,758	1,642	1,551	88	94

Cattle Marketed on 1,000+ Capacity Feedlots – United States

Million head



Cattle Other Disappearance on 1,000+ Capacity Feedlots by Month – States and United States: 2025 and 2026

State	During May 2025 (1,000 head)	During April 2026 (1,000 head)	During May 2026		
			Other disappearance (1,000 head)	Percent of previous year (percent)	Percent of previous month (percent)
Arizona	1	1	1	100	100
California	6	4	4	67	100
Colorado	10	5	5	50	100
Idaho	1	3	1	100	33
Iowa	2	2	2	100	100
Kansas	10	10	10	100	100
Nebraska	15	10	15	100	150
Oklahoma	1	2	1	100	50
South Dakota	2	1	2	100	200
Texas	10	10	10	100	100
Washington	1	1	1	100	100
Other States	3	3	3	100	100
United States	62	52	55	89	106

Terms and Definitions of Cattle on Feed Estimates

Cattle on feed are steers and heifers being fed a ration of grain, silage, hay and/or protein supplement for slaughter market that are expected to produce a carcass that will grade select or better. It excludes cattle being "backgrounded only" for later sale as feeders or later placement in another feedlot.

Placements are steers and heifers put into a feedlot, fed a ration which will produce a carcass that will grade select or better, and are intended for the slaughter market.

Marketings are steers and heifers shipped out of feedlots to a slaughter market.

Other disappearance includes death loss, movement from feedlots to pasture, and shipments to other feedlots for further feeding.

Statistical Methodology

Survey Procedures: During January and July all known feedlots in the United States with capacity of 1,000 or more head are surveyed to provide data for cattle on feed estimates. During the other months, all known feedlots from 16 States are surveyed. The 16 States account for approximately 98 percent of the cattle on feed in feedlots with capacity of 1,000 or more head. Individual State estimates are published monthly for 11 of the 16 States. Data collected from the remaining 5 States are used to establish the "Other States" estimates. These 5 States include Illinois, Minnesota, New Mexico, Oregon, and Wyoming. The "Other States" category represents all cattle on feed with a capacity of 1,000 or more head for the rest of the United States.

Estimating Procedures: These cattle on feed estimates were prepared by the Agricultural Statistics Board after reviewing recommendations and analysis submitted by Regional Field Offices. Regional and State survey data were reviewed for reasonableness with each other and with estimates from the previous month when establishing the current estimates.

Revision Policy: Revisions to previous estimates are made to improve month-to-month relationships. Estimates for the previous month are subject to revision in all States each month when current estimates are made. In February, all monthly estimates for the previous year, and the number of feedlots and annual marketings from two years ago are reviewed and subject to revisions. The reviews are primarily based on slaughter data, state check-off or brand data, and any other data that may have been received after the original estimate was made. Estimates will also be reviewed after data from the *Census of Agriculture* are available. No revisions will be made after that date and estimates become final.

Reliability: Since all 1,000+ capacity cattle on feed operators in every State are not included in the monthly survey, survey estimates are subject to sampling variability. Survey results are also subject to non-sampling errors such as omissions, duplications, and mistakes in reporting, recording, and processing the data. The effects of these errors cannot be measured directly. They are minimized through rigid quality controls in the data collection process and through a careful review of all reported data for consistency and reasonableness.

To assist users in evaluating the reliability of estimates in this report, the "**Root Mean Square Error**" is shown for selected items in the table on the following page. The "Root Mean Square Error" is a statistical measure based on past performance and is computed using the differences between first and latest estimates. The "Root Mean Square Error" for cattle on feed inventory estimates over the past 24 months is 0.0 percent. This means that chances are 2 out of 3 that the final estimate will not be above or below the current estimate of 11.7 million head by more than 0.0 percent. Chances are 9 out of 10 that the difference will not exceed 0.1 percent.

The table on the following page shows a 24-month record of the range of differences between first and latest estimates for selected items. Using estimates of number on feed as an example, changes between the first estimate and the latest estimate during the past 24 months have averaged 1,000 head, ranging from 0 to 20,000 head. During this period the initial estimate has been above the latest estimate 1 time and has been below the latest estimate 2 times. This does not imply that the initial estimate is likely to understate or overstate final inventory.

Reliability of Monthly Cattle on Feed Estimates

[Based on data for the past 24 months]

Item	Root mean square error	90 percent confidence level	Difference between first and latest estimate				
			Average	Smallest	Largest	Months	
						Below latest	Above latest
	(percent)	(percent)	(1,000)	(1,000)	(1,000)	(number)	(number)
On feed	0.0	0.1	1	0	20	2	1
Placements	0.2	0.3	1	0	20	7	2
Marketings	0.0	0.1	0	0	2	5	1

Information Contacts

Listed below are the commodity specialists in the Livestock Branch of the National Agricultural Statistics Service to contact for additional information. E-mail inquiries may be sent to nass@usda.gov.

Travis Averill, Chief, Livestock Branch	(202) 692-0069
Sherry Bertramsen – Livestock Slaughter	(202) 690-8632
Shulonda Blackmon – Capacity of Refrigerated Warehouses, Cold Storage	(202) 720-3240
Tiffany Byrne – Dairy Products.....	(651) 440-7789
Ryan Cowen – Cattle, Cattle on Feed.....	(202) 720-3040
Kim DaPra – Milk Production	(202) 720-3278
Fatema Haque – Poultry Slaughter, Turkey Hatchery, Turkeys Raised	(202) 720-3244
Derron Martin – Catfish, Census of Aquaculture, Egg Products, Trout.....	(202) 690-3237
Ralph Mondesir – Hogs and Pigs	(202) 720-3106
Suzanne Richards – Cost of Pollination, Honey, Honey Bee Colonies, Sheep and Goats	(202) 720-4448
Autumn Stone – Layers, Eggs	(202) 690-3676
Takiyah Walker – Broiler Hatchery, Chicken Hatchery.....	(202) 720-6147

Access to NASS Reports

For your convenience, you may access NASS reports and products the following ways:

- All reports are available electronically, at no cost, on the NASS web site: www.nass.usda.gov.
- The national specific reports are available via a free e-mail subscription. To set-up this free subscription, visit www.nass.usda.gov and click on “National” in upper right corner above “search” box to create an account and select the reports you would like to receive.
- Economics, Statistics, and Market Information (ESMIS) – National Agricultural Library (NAL) website houses NASS’s and other agency archived reports at <https://esmis.nal.usda.gov>. All email subscriptions containing reports will be sent from <https://esmis.nal.usda.gov>. To receive the reports via e-mail, you will have to go to the website, create a new account and subscribe to the reports. You should whitelist notifications@esmis.nal.usda.gov in your email client to avoid the emails going into spam/junk folders.

For more information on NASS surveys and reports, call the NASS Agricultural Statistics Hotline at (800) 727-9540, 7:30 a.m. to 4:00 p.m. ET, or e-mail: nass@usda.gov.

If you have specific questions you would like an expert to respond to, please visit our “Ask A Specialist” website at www.nass.usda.gov/Contact_Us/Ask_a_Specialist.

In accordance with Federal civil rights law and U.S. Department of Agriculture (USDA) civil rights regulations and policies, the USDA, its Agencies, offices, and employees, and institutions participating in or administering USDA programs are prohibited from discriminating based on race, color, national origin, religion, sex, disability, age, marital status, family/parental status, income derived from a public assistance program, political beliefs, or reprisal or retaliation for prior civil rights activity, in any program or activity conducted or funded by USDA (not all bases apply to all programs). Remedies and complaint filing deadlines vary by program or incident.

Persons with disabilities who require alternative means of communication for program information (e.g., Braille, large print, audiotape, American Sign Language, etc.) should contact the responsible Agency or USDA's TARGET Center at (202) 720-2600 (voice and TTY) or contact USDA through the Federal Relay Service at (800) 877-8339. Additionally, program information may be made available in languages other than English.

To file a program discrimination complaint, complete the USDA Program Discrimination Complaint Form, AD-3027, found online at [How to File a Program Discrimination Complaint](#) and at any USDA office or write a letter addressed to USDA and provide in the letter all of the information requested in the form. To request a copy of the complaint form, call (866) 632-9992. Submit your completed form or letter to USDA by: (1) mail: U.S. Department of Agriculture, Office of the Assistant Secretary for Civil Rights, 1400 Independence Avenue, SW, Washington, D.C. 20250-9410; (2) fax: (202) 690-7442; or (3) email: program.intake@usda.gov.

USDA is an equal opportunity provider, employer, and lender.