



# Cattle on Feed

ISSN: 1948-9080

---

Released January 23, 2026, by the National Agricultural Statistics Service (NASS), Agricultural Statistics Board, United States Department of Agriculture (USDA).

## United States Cattle on Feed Down 3 Percent

**Cattle and calves on feed** for the slaughter market in the United States for feedlots with capacity of 1,000 or more head totaled 11.5 million head on January 1, 2026. The inventory was 3 percent below January 1, 2025. The inventory included 7.02 million steers and steer calves, down 3 percent from the previous year. This group accounted for 61 percent of the total inventory. Heifers and heifer calves accounted for 4.44 million head, down 3 percent from 2025.

**Placements** in feedlots during December totaled 1.55 million head, 5 percent below 2024. Net placements were 1.50 million head. During December, placements of cattle and calves weighing less than 600 pounds were 365,000 head, 600-699 pounds were 360,000 head, 700-799 pounds were 355,000 head, 800-899 pounds were 274,000 head, 900-999 pounds were 115,000 head, and 1,000 pounds and greater were 85,000 head.

**Marketings** of fed cattle during December totaled 1.77 million head, 2 percent above 2024.

**Other disappearance** totaled 58,000 head during December, 2 percent below 2024.

**Cattle on Feed Inventory, Placements, Marketings, and Other Disappearance on 1,000+ Capacity Feedlots – United States: January 1, 2025 and 2026**

[December preceding year]

Item	2025	2026	Percent of previous year
	(1,000 head)	(1,000 head)	(percent)
On feed December 1 .....	11,982	11,727	98
Placed on feed during December .....	1,642	1,554	95
Fed cattle marketed during December .....	1,742	1,773	102
Other disappearance during December .....	59	58	98
On feed January 1 .....	11,823	11,450	97

**Cattle on Feed Inventory, Placements, Marketings, and Other Disappearance on 1,000+ Capacity Feedlots – United States: December 1, 2024 and 2025**

Item	2024	2025	Percent of previous year
	(1,000 head)	(1,000 head)	(percent)
On feed November 1 .....	11,966	11,706	98
Placed on feed during November .....	1,796	1,594	89
Fed cattle marketed during November .....	1,725	1,520	88
Other disappearance during November .....	55	53	96
On feed December 1 .....	11,982	11,727	98

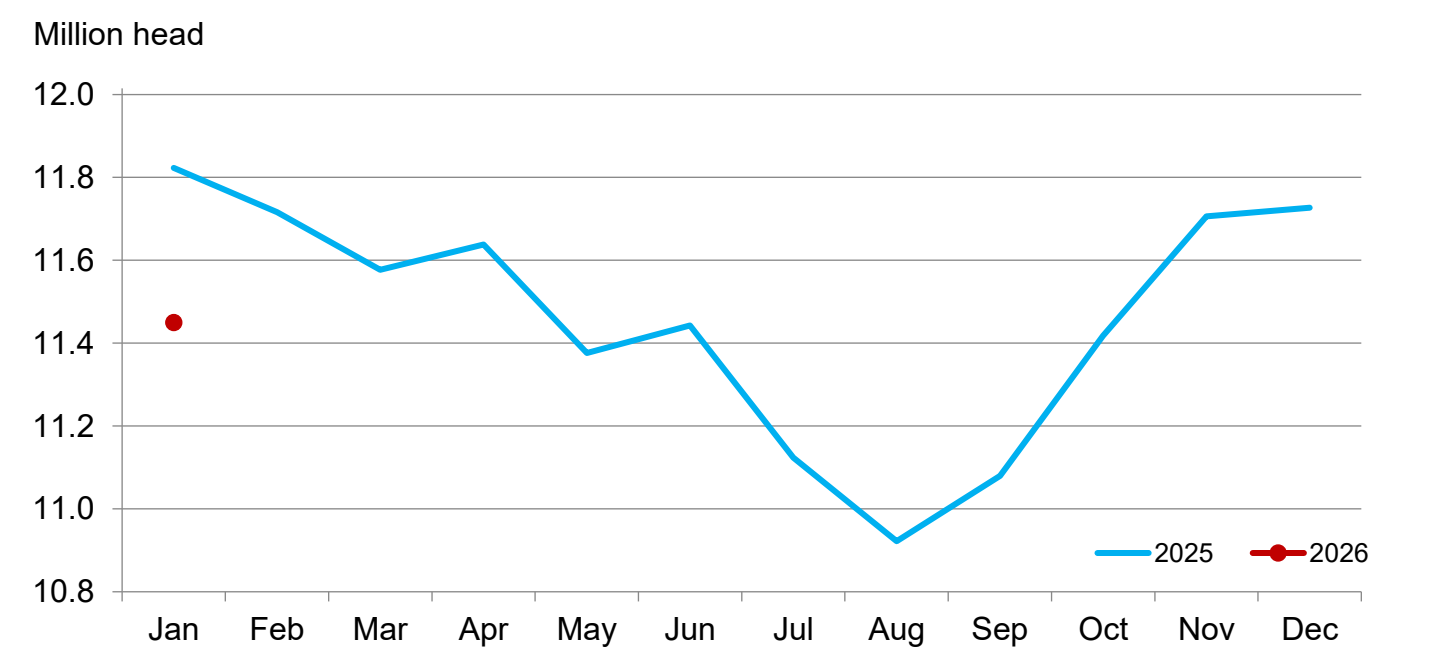
**Cattle on Feed by Class on 1,000+ Capacity Feedlots – United States: January 1, 2025 and 2026**

Item	2025	2026	Percent of	
			previous year	inventory
	(1,000 head)	(1,000 head)	(percent)	(percent)
Class on feed January 1 .....				
Steers and steer calves .....	7,248	7,015	97	61
Heifers and heifer calves .....	4,575	4,435	97	39

Cattle on Feed Inventory on 1,000+ Capacity Feedlots by Month – States and United States: 2025 and 2026

State	January 1, 2025	December 1, 2025	January 1, 2026		
			Inventory	Percent of previous year	Percent of previous month
	(1,000 head)	(1,000 head)	(1,000 head)	(percent)	(percent)
Arizona .....	233	212	210	90	99
California .....	520	495	500	96	101
Colorado .....	1,050	910	890	85	98
Idaho .....	330	345	345	105	100
Iowa .....	650	700	680	105	97
Kansas .....	2,400	2,440	2,390	100	98
Nebraska .....	2,580	2,670	2,620	102	98
Oklahoma .....	360	340	325	90	96
South Dakota .....	230	255	235	102	92
Texas .....	2,780	2,610	2,530	91	97
Washington .....	255	295	270	106	92
Other States .....	435	455	455	105	100
United States .....	11,823	11,727	11,450	97	98

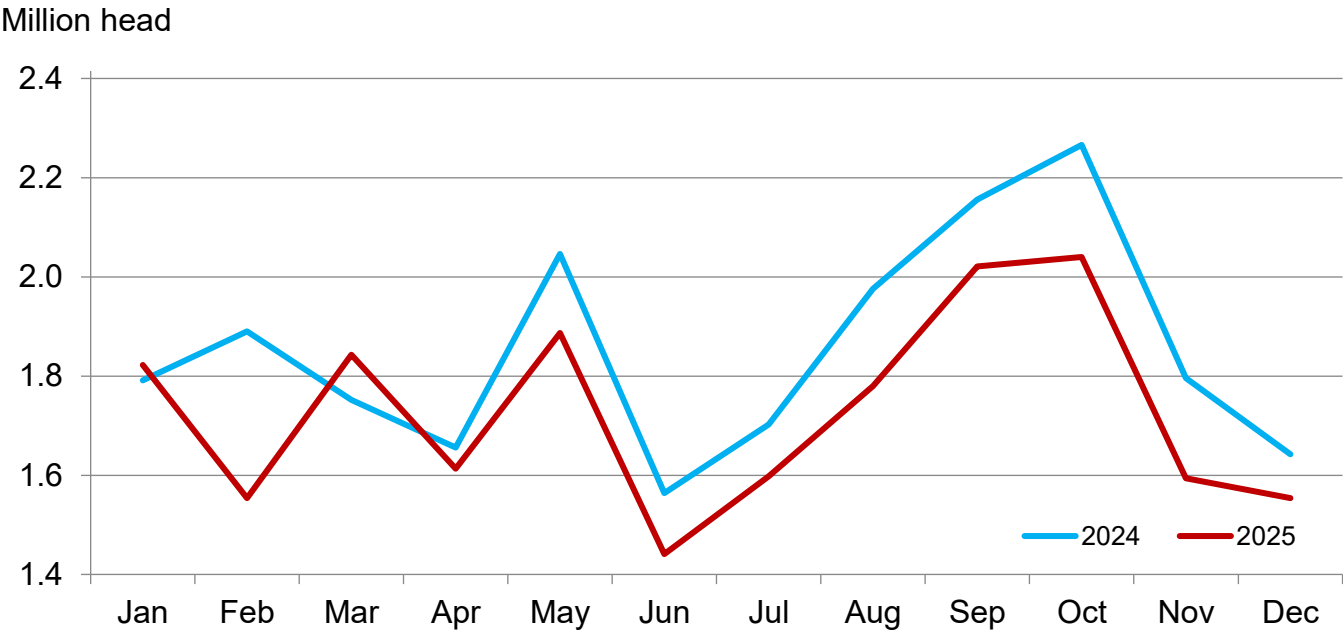
Cattle on Feed Inventory on 1,000+ Capacity Feedlots – United States



**Cattle Placed on Feed on 1,000+ Capacity Feedlots by Month – States and United States: 2024 and 2025**

State	During December 2024	During November 2025	During December 2025		
			Placements	Percent of previous year	Percent of previous month
	(1,000 head)	(1,000 head)	(1,000 head)	(percent)	(percent)
Arizona .....	23	16	19	83	119
California .....	65	58	64	98	110
Colorado .....	130	105	120	92	114
Idaho .....	41	46	41	100	89
Iowa .....	91	94	82	90	87
Kansas .....	410	320	380	93	119
Nebraska .....	460	460	425	92	92
Oklahoma .....	35	41	28	80	68
South Dakota .....	38	58	31	82	53
Texas .....	255	285	280	110	98
Washington .....	31	39	22	71	56
Other States .....	63	72	62	98	86
United States .....	1,642	1,594	1,554	95	97

**Cattle Placed on 1,000+ Capacity Feedlots – United States**



## Cattle Placed on Feed by Weight Group on 1,000+ Capacity Feedlots and Month – States and United States: 2024 and 2025

State	During December 2024							
	Under 600 lbs	600-699 lbs	700-799 lbs	800-899 lbs	900+ lbs <sup>1</sup>	900-999 lbs	1,000+ lbs	Total
	(1,000 head)	(1,000 head)	(1,000 head)	(1,000 head)	(1,000 head)	(1,000 head)	(1,000 head)	(1,000 head)
Colorado .....	30	30	30	20	20	(D)	(D)	130
Kansas .....	60	95	120	90	45	(D)	(D)	410
Nebraska .....	55	105	105	100	95	(D)	(D)	460
Texas .....	110	60	50	25	10	(D)	(D)	255
Other States ...	140	90	70	52	35	(D)	(D)	387
United States ..	395	380	375	287	(X)	115	90	1,642

State	During November 2025							
	Under 600 lbs	600-699 lbs	700-799 lbs	800-899 lbs	900+ lbs <sup>1</sup>	900-999 lbs	1,000+ lbs	Total
	(1,000 head)	(1,000 head)	(1,000 head)	(1,000 head)	(1,000 head)	(1,000 head)	(1,000 head)	(1,000 head)
Colorado .....	30	25	20	15	15	(D)	(D)	105
Kansas .....	45	75	90	70	40	(D)	(D)	320
Nebraska .....	95	110	80	80	95	(D)	(D)	460
Texas .....	100	70	65	35	15	(D)	(D)	285
Other States ...	165	95	65	54	45	(D)	(D)	424
United States ..	435	375	320	254	(X)	130	80	1,594

State	During December 2025							
	Under 600 lbs	600-699 lbs	700-799 lbs	800-899 lbs	900+ lbs <sup>1</sup>	900-999 lbs	1,000+ lbs	Total
	(1,000 head)	(1,000 head)	(1,000 head)	(1,000 head)	(1,000 head)	(1,000 head)	(1,000 head)	(1,000 head)
Colorado .....	25	30	25	20	20	(D)	(D)	120
Kansas .....	55	85	110	85	45	(D)	(D)	380
Nebraska .....	50	100	95	90	90	(D)	(D)	425
Texas .....	115	65	60	30	10	(D)	(D)	280
Other States ...	120	80	65	49	35	(D)	(D)	349
United States ..	365	360	355	274	(X)	115	85	1,554

(D) Withheld to avoid disclosing data for individual operations.

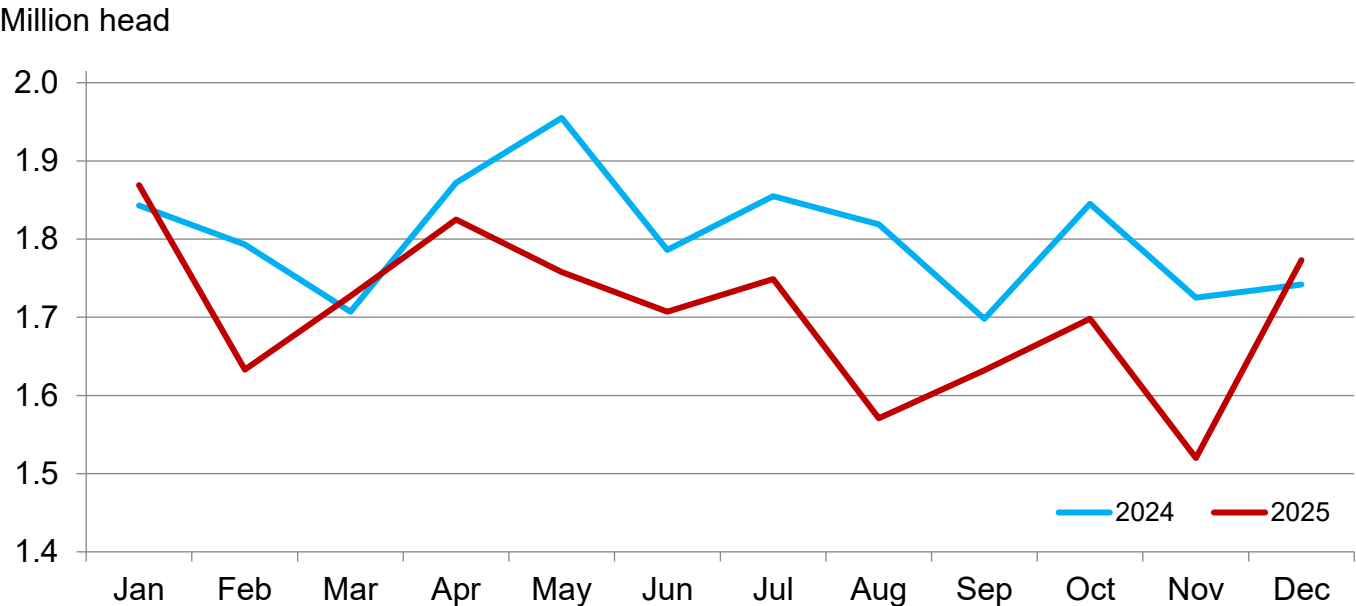
(X) Not applicable.

<sup>1</sup> The 900 pounds and greater weight group is the sum of 900-999 pounds and 1,000 pounds and greater weight groups.

## Cattle Marketed on 1,000+ Capacity Feedlots by Month – States and United States: 2024 and 2025

State	During December 2024	During November 2025	During December 2025		
			Marketings	Percent of previous year	Percent of previous month
	(1,000 head)	(1,000 head)	(1,000 head)	(percent)	(percent)
Arizona .....	21	14	20	95	143
California .....	49	44	56	114	127
Colorado .....	130	110	130	100	118
Idaho .....	40	45	40	100	89
Iowa .....	100	92	100	100	109
Kansas .....	420	330	420	100	127
Nebraska .....	465	420	465	100	111
Oklahoma .....	39	35	41	105	117
South Dakota .....	42	37	50	119	135
Texas .....	345	290	345	100	119
Washington .....	35	38	46	131	121
Other States .....	56	65	60	107	92
United States .....	1,742	1,520	1,773	102	117

# Cattle Marketed on 1,000+ Capacity Feedlots – United States



Cattle Other Disappearance on 1,000+ Capacity Feedlots by Month – States and United States: 2024 and 2025

State	During December 2024	During November 2025	During December 2025		
			Other disappearance	Percent of previous year	Percent of previous month
	(1,000 head)	(1,000 head)	(1,000 head)	(percent)	(percent)
Arizona .....	1	1	1	100	100
California .....	6	4	3	50	75
Colorado .....	10	5	10	100	200
Idaho .....	1	1	1	100	100
Iowa .....	1	2	2	200	100
Kansas .....	10	10	10	100	100
Nebraska .....	15	10	10	67	100
Oklahoma .....	1	1	2	200	200
South Dakota .....	1	1	1	100	100
Texas .....	10	15	15	150	100
Washington .....	1	1	1	100	100
Other States .....	2	2	2	100	100
United States .....	59	53	58	98	109

**Cattle on Feed by Class on 1,000+ Capacity Feedlots by Quarter – States and United States:  
2025 and 2026**

State	Steers and steer calves			Heifers and heifer calves		
	Jan 1, 2025	Oct 1, 2025	Jan 1, 2026	Jan 1, 2025	Oct 1, 2025	Jan 1, 2026
	(1,000 Head)	(1,000 Head)	(1,000 Head)	(1,000 Head)	(1,000 Head)	(1,000 Head)
Arizona .....	218	198	200	15	15	10
California .....	420	390	400	100	90	100
Colorado .....	550	485	475	500	435	415
Idaho .....	175	195	185	155	150	160
Iowa .....	500	550	530	150	140	150
Kansas .....	1,410	1,460	1,400	990	950	990
Nebraska .....	1,630	1,650	1,660	950	910	960
Oklahoma .....	205	180	190	155	140	135
South Dakota .....	135	115	140	95	85	95
Texas .....	1,570	1,400	1,375	1,210	1,170	1,155
Washington .....	140	145	150	115	135	120
Other States .....	295	295	310	140	135	145
United States .....	7,248	7,063	7,015	4,575	4,355	4,435

## Terms and Definitions of Cattle on Feed Estimates

**Cattle on feed** are steers and heifers being fed a ration of grain, silage, hay and/or protein supplement for slaughter market that are expected to produce a carcass that will grade select or better. It excludes cattle being "backgrounded only" for later sale as feeders or later placement in another feedlot.

**Placements** are steers and heifers put into a feedlot, fed a ration which will produce a carcass that will grade select or better, and are intended for the slaughter market.

**Marketings** are steers and heifers shipped out of feedlots to a slaughter market.

**Other disappearance** includes death loss, movement from feedlots to pasture, and shipments to other feedlots for further feeding.

## Statistical Methodology

**Survey Procedures:** During January and July all known feedlots in the United States with capacity of 1,000 or more head are surveyed to provide data for cattle on feed estimates. During the other months, all known feedlots from 16 States are surveyed. The 16 States account for approximately 98 percent of the cattle on feed in feedlots with capacity of 1,000 or more head. Individual State estimates are published monthly for 11 of the 16 States. Data collected from the remaining 5 States are used to establish the "Other States" estimates. These 5 States include Illinois, Minnesota, New Mexico, Oregon, and Wyoming. The "Other States" category represents all cattle on feed with a capacity of 1,000 or more head for the rest of the United States.

**Estimating Procedures:** These cattle on feed estimates were prepared by the Agricultural Statistics Board after reviewing recommendations and analysis submitted by Regional Field Offices. Regional and State survey data were reviewed for reasonableness with each other and with estimates from the previous month when establishing the current estimates.

**Revision Policy:** Revisions to previous estimates are made to improve month-to-month relationships. Estimates for the previous month are subject to revision in all States each month when current estimates are made. In February, all monthly estimates for the previous year, and the number of feedlots and annual marketings from two years ago are reviewed and subject to revisions. The reviews are primarily based on slaughter data, state check-off or brand data, and any other data that may have been received after the original estimate was made. Estimates will also be reviewed after data from the *Census of Agriculture* are available. No revisions will be made after that date and estimates become final.

**Reliability:** Since all 1,000+ capacity cattle on feed operators in every State are not included in the monthly survey, survey estimates are subject to sampling variability. Survey results are also subject to non-sampling errors such as omissions, duplications, and mistakes in reporting, recording, and processing the data. The effects of these errors cannot be measured directly. They are minimized through rigid quality controls in the data collection process and through a careful review of all reported data for consistency and reasonableness.

To assist users in evaluating the reliability of estimates in this report, the "**Root Mean Square Error**" is shown for selected items in the table on the following page. The "Root Mean Square Error" is a statistical measure based on past performance and is computed using the differences between first and latest estimates. The "Root Mean Square Error" for cattle on feed inventory estimates over the past 24 months is 0.0 percent. This means that chances are 2 out of 3 that the final estimate will not be above or below the current estimate of 11.5 million head by more than 0.0 percent. Chances are 9 out of 10 that the difference will not exceed 0.1 percent.

The table on the following page shows a 24-month record of the range of differences between first and latest estimates for selected items. Using estimates of number on feed as an example, changes between the first estimate and the latest estimate during the past 24 months have averaged 1,000 head, ranging from 0 to 20,000 head. During this period the initial estimate has been above the latest estimate 1 time and has been below the latest estimate 2 times. This does not imply that the initial estimate is likely to understate or overstate final inventory.



## Reliability of Monthly Cattle on Feed Estimates

[Based on data for the past 24 months]

Item	Root mean square error	90 percent confidence level	Difference between first and latest estimate				
			Average	Smallest	Largest	Months	
						Below latest	Above latest
	(percent)	(percent)	(1,000)	(1,000)	(1,000)	(number)	(number)
On feed .....	0.0	0.1	1	0	20	2	1
Placements .....	0.2	0.4	2	0	20	5	4
Marketings .....	0.0	0.1	0	0	2	4	3

## Information Contacts

Listed below are the commodity specialists in the Livestock Branch of the National Agricultural Statistics Service to contact for additional information. E-mail inquiries may be sent to [nass@usda.gov](mailto:nass@usda.gov).

Travis Averill, Chief, Livestock Branch .....	(202) 692-0069
Sherry Bertramsen – Livestock Slaughter .....	(202) 690-8632
Tiffany Byrne – Dairy Products .....	(651) 440-7789
Ryan Cowen – Cattle, Cattle on Feed .....	(202) 720-3040
Kim DaPra – Milk Production .....	(202) 720-3278
Fatema Haque – Poultry Slaughter, Turkey Hatchery, Turkeys Raised .....	(202) 720-3244
Derron Martin – Catfish, Census of Aquaculture, Egg Products, Trout .....	(202) 690-3237
Ralph Mondesir – Hogs and Pigs .....	(202) 720-3106
Suzanne Richards – Cost of Pollination, Honey, Honey Bee Colonies, Sheep and Goats .....	(202) 720-4448
Shulonda Shaw – Capacity of Refrigerated Warehouses, Cold Storage .....	(202) 720-3240
Autumn Stone – Layers, Eggs .....	(202) 690-3676
Takiyah Walker – Broiler Hatchery, Chicken Hatchery .....	(202) 720-6147

## Access to NASS Reports

For your convenience, you may access NASS reports and products the following ways:

- All reports are available electronically, at no cost, on the NASS web site: [www.nass.usda.gov](http://www.nass.usda.gov).
- The national specific reports are available via a free e-mail subscription. To set-up this free subscription, visit [www.nass.usda.gov](http://www.nass.usda.gov) and click on “National” in upper right corner above “search” box to create an account and select the reports you would like to receive.
- Economics, Statistics, and Market Information (ESMIS) – National Agricultural Library (NAL) website houses NASS’s and other agency archived reports at <https://esmis.nal.usda.gov>. All email subscriptions containing reports will be sent from <https://esmis.nal.usda.gov>. To receive the reports via e-mail, you will have to go to the website, create a new account and subscribe to the reports. You should whitelist [notifications@esmis.nal.usda.gov](mailto:notifications@esmis.nal.usda.gov) in your email client to avoid the emails going into spam/junk folders.

For more information on NASS surveys and reports, call the NASS Agricultural Statistics Hotline at (800) 727-9540, 7:30 a.m. to 4:00 p.m. ET, or e-mail: [nass@usda.gov](mailto:nass@usda.gov).

If you have specific questions you would like an expert to respond to, please visit our “Ask A Specialist” website at [www.nass.usda.gov/Contact\\_Us/Ask\\_a\\_Specialist](http://www.nass.usda.gov/Contact_Us/Ask_a_Specialist).

In accordance with Federal civil rights law and U.S. Department of Agriculture (USDA) civil rights regulations and policies, the USDA, its Agencies, offices, and employees, and institutions participating in or administering USDA programs are prohibited from discriminating based on race, color, national origin, religion, sex, disability, age, marital status, family/parental status, income derived from a public assistance program, political beliefs, or reprisal or retaliation for prior civil rights activity, in any program or activity conducted or funded by USDA (not all bases apply to all programs). Remedies and complaint filing deadlines vary by program or incident.

Persons with disabilities who require alternative means of communication for program information (e.g., Braille, large print, audiotope, American Sign Language, etc.) should contact the responsible Agency or USDA's TARGET Center at (202) 720-2600 (voice and TTY) or contact USDA through the Federal Relay Service at (800) 877-8339. Additionally, program information may be made available in languages other than English.

To file a program discrimination complaint, complete the USDA Program Discrimination Complaint Form, AD-3027, found online at [How to File a Program Discrimination Complaint](#) and at any USDA office or write a letter addressed to USDA and provide in the letter all of the information requested in the form. To request a copy of the complaint form, call (866) 632-9992. Submit your completed form or letter to USDA by: (1) mail: U.S. Department of Agriculture, Office of the Assistant Secretary for Civil Rights, 1400 Independence Avenue, SW, Washington, D.C. 20250-9410; (2) fax: (202) 690-7442; or (3) email: [program.intake@usda.gov](mailto:program.intake@usda.gov).

USDA is an equal opportunity provider, employer, and lender.



U.S. DEPARTMENT OF AGRICULTURE

# USDA's 102nd Annual Agricultural Outlook Forum

Hybrid



February 19-20, 2026 • Crystal Gateway Marriott, Arlington VA

**Registration is now open to USDA's 102nd Agricultural Outlook Forum!**

USDA's 102nd Annual Agricultural Outlook Forum will be held at the Crystal City Gateway Marriott on February 19-20, 2026, and all Forum sessions will be livestreamed on a virtual platform. Join USDA's new Chief Economist, Justin Benavidez, as he unveils the USDA's initial 2026 forecast for the agricultural economy, commodity markets, trade, and farm income. Hear how cutting-edge technologies and artificial intelligence are modernizing agricultural production practices and reshaping markets. Learn from more than 80 subject matter experts, executives, and academics as they explore some of the most pressing issues impacting agriculture. Explore USDA's agency exhibits and discover recent USDA-funded innovations along with the Department's key programs and activities.

*Join us in-person or virtually.*

To see the Forum program and register, visit:

[The 2026 Forum Website](#)