



2022-23 ANNUAL REPORT AND DONOR HONOR ROLL



Bank Street
College of Education

610
W112



Bank Street
College of Education



CONTENTS

A Message from the President	2
Our Mission & Credo	5
Thank You to Our 2022-23 Board of Trustees	6
Our Finances	8
1916 Giving Society	11
Our Endowment	13
Children's Programs	14
Graduate School of Education	17
Bank Street Education Center	18
Lucy Sprague Mitchell Society	21
Thank You to Our Donors	22
Ways to Give	40

A MESSAGE FROM THE PRESIDENT



Dear Friends,

At Bank Street, we believe teaching and learning are expressions of justice and that education is the world's most valuable currency. As I reflect on the challenges we face as a community, a nation, and a world, I find myself experiencing overwhelming gratitude for the Bank Street family and our shared pursuit of learning and equity.

The landscape of education is shifting, sometimes in ways that challenge our deepest convictions. Across our nation, books are being banned, affirmative action is being rolled back, and teachers are forbidden to teach the truth about the history of racism in our country. In parallel, pandemic era funding to combat poverty, support child care, and help schools meet the academic and emotional needs of children is expiring, deepening inequity and the many challenges facing families, educators, and school systems.

At Bank Street, we are prepared to meet this moment. We know teaching and learning aren't just academic endeavors—they are declarations of hope for a better future. Through our work, we show the world the transformative power of education. We share a vision for schools where each student is seen, heard, and valued and create learning spaces where children and teachers can engage with others with courage, curiosity, and compassion.

This past year, we've continued our mission to bring high-quality education grounded in equity to more children, educators, and communities in New York and across the country.

In the Graduate School of Education, faculty and staff engaged in deep reflection on its curriculum, focusing on the areas of child development, multilingual learners, developmental variations, racial literacy, and preparation for public schools. We planned a new and exciting partnership with the non-profit New Leaders, paving the way for an expansion of their National Aspiring Principals Fellowship that provides career pathways to equity-focused aspiring school leaders across New York State. Additionally, we welcomed Amy Stuart Wells as the new dean of the Graduate School of Education. Amy has a strong progressive vision that is aligned with Bank Street's approach and commitment to equity and anti-racism and is uniquely positioned to build on the powerful work of Cecelia Traugh, who led the Graduate School of Education from 2015 to 2023.

The Graduate School also continued to produce research, policy recommendations, and faculty scholarship to help inform the work of educators across the country. The National Center for Children in Poverty released a report examining successful strategies and policies around child welfare and early intervention, as well as a 50-state survey asking Medicaid leaders about policies designed to identify, prevent, and treat early childhood mental health. The Straus Center—guided by an enduring commitment to serving our youngest learners—launched new research on policies and practices that support early childhood teachers' well-being while strengthening inclusive classroom practices that are culturally, linguistically, and disabilities-responsive. EdPrepLab, our national network of teacher and leader preparation programs, continued its work to ensure educators are prepared to enact equity-focused practices aligned with the science of learning and development (SoLD) and hosted a year-long learning series complete with school site visits to support cross-institutional research.

In our children's programs, the School for Children invested in curriculum development across several areas, including a review of its Racial Justice and Advocacy (RJA) curriculum that involved observing, recording, and documenting the curriculum and engaging with key constituents for feedback. The school also resumed many of its signature in-person events post-pandemic, including field trips, learning opportunities, and celebratory gatherings that further strengthened community connections. In the Family Center, educators explored how to use books to support identity development and engaged families in conversations around identity and ability. Bank Street Head Start focused on strengthening support for students and families with special education needs and Liberty LEADS responded to the needs of their 5th- through 12th-grade students as they emerged from the pandemic with increased academic and social emotional programming.

Across the Bank Street Education Center, we expanded our efforts to disrupt inequity and design better educational experiences for both children and adults through new and continued partnerships and programs. Our team partnered with Pratt Institute to conceptualize and co-design a new public school model offering a progressive curriculum grounded in hands-on learning experiences connected to design thinking, the arts, and social justice. The project, which was funded through a planning grant from the New York City Department of Education and XQ, resulted in the launch of Design Works High School in Brooklyn in September 2023. Other projects included work supporting math education in Yonkers and select New York City schools and the launch of the Early Childhood Policy Fellowship to help build strong early childhood education systems across the country that center quality and equity.

Throughout the year, Bank Street also recognized and celebrated our collective work through a series of flagship events and programs, such as the Bank Street Celebration, our annual fundraising gala, which raised \$1,000,000, and our annual Alumni Weekend, which brought together over 200 alumni from the Graduate School of Education and the School for Children to reconnect with old friends and learn more about Bank Street's work and the exciting changes taking place on campus.

Finally, Bank Street leadership embarked on research and planning to inform our next strategic plan, which was finalized in Fall 2023 and will help guide our work over the next five years. Goals will focus on developing educators as changemakers, working to build equitable systems and schools, and cultivating new knowledge to solve the toughest problems in education.

I am proud of the work happening across Bank Street and look forward to working together to continue to provide high-quality progressive education for children and teachers. As we continue to learn and grow in the year ahead, I hope you will join me in recommitting ourselves to building a better world through education.

Warmly,

A handwritten signature in black ink, appearing to read 'Shael', with a stylized, flowing script.

Shael Polakow-Suransky, GSE '00
President, Bank Street College



OUR MISSION & CREDO

MISSION

The mission of Bank Street College is to improve the education of children and their teachers by applying to the education process all available knowledge about learning and growth and by connecting teaching and learning meaningfully to the outside world. In so doing, we seek to strengthen not only individuals, but the community as well, including family, school, and the larger society in which adults and children, in all their diversity, interact and learn. We see in education the opportunity to build a better society.

CREDO

Lucy Sprague Mitchell, who founded Bank Street as the Bureau of Educational Experiments over a century ago, wrote a credo that continues to define the spirit of imaginative and critical inquiry that motivates and guides our work today.

What potentialities in human beings—children, teachers, and ourselves—do we want to see develop?

- A zest for living that comes from taking in the world with all five senses alert
- Lively intellectual curiosities that turn the world into an exciting laboratory and keep one ever a learner
- Flexibility when confronted with change and ability to relinquish patterns that no longer fit the present
- The courage to work, unafraid and efficiently, in a world of new needs, new problems, and new ideas
- Gentleness combined with justice in passing judgments on other human beings
- Sensitivity—not only to the external formal rights of the “other fellow,” but to him as another human being seeking a good life through his own standards
- A striving to live democratically, in and out of schools, as the best way to advance our concept of democracy

Our credo demands ethical standards as well as scientific attitudes. Our work is based on the faith that human beings can improve the society they have created.

THANK YOU TO OUR 2022-23 BOARD OF TRUSTEES

STATUTORY TRUSTEES

Anthony M. Asnes, SFC '75
Charles R. Bendit
Jay Chakrapani
Jonathan R. Cole
Nancie Cooper
Paul Ellis
Yolanda C. Ferrell-Brown
Felice Friedman, GSE '76
Ofelia García
Russell Granet
Victoria Hamilton, Chair
Margaret Honey
Kristen Kane
Christopher Kellen
Fern Khan
Kenneth B. Lerer

Lisa Lewin, Secretary
Adam H. Litke
Rebecca Mai
David Orr, SFC '93
Elizabeth S. Pforzheimer, Vice Chair
Sandra Pinnavaia
Shael Polakow-Suransky, GSE '00
Barbara A. Schatz
Anne V. Shutkin, SFC '95
Jeffrey Q. Smith
Howard S. Stein, Treasurer
Jeffrey I. Sussman, Vice Chair
Wendy Van Amson
Rose Klein Young
Debbie Zlotowitz, GSE '90

ASSOCIATE TRUSTEES

Jessica E. Charles, GSE '21
Heather Mohamed, GSE '22
Samantha Nadal
Melle Powers
Kate Sussman, GSE '98, SFC '85

LIFE TRUSTEES

George P. Scurria, Jr.
Lynn G. Straus,* GSE '57
Kate R. Whitney

*Deceased



“

We chose Bank Street School for Children for our daughter because we believe in the power of progressive education. I joined the Board of Trustees because I believe that education is the best investment we can make in the future. All children deserve a Bank Street education, and Bank Street is delivering on this promise—at scale.

Lisa Lewin
Trustee, Bank Street College of Education

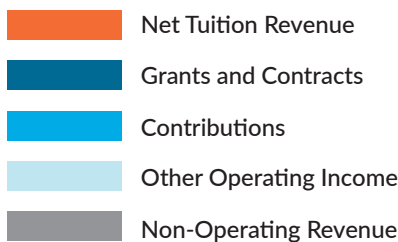
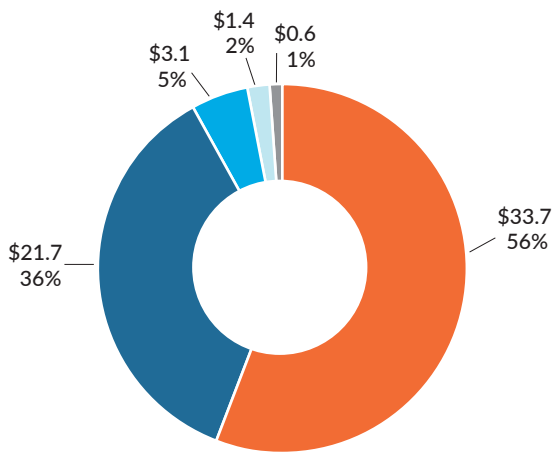


OUR FINANCES

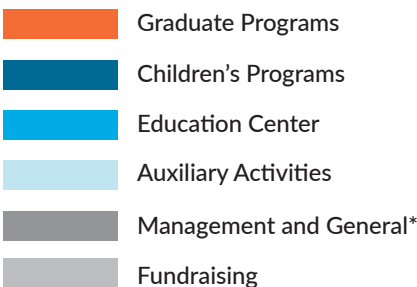
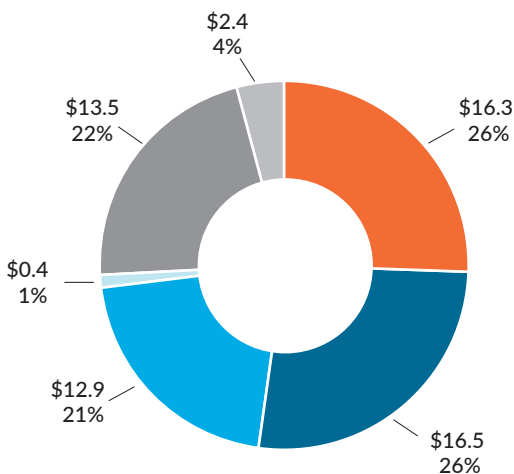
as of June 30, 2023

Bank Street’s accomplishments are not possible without the generous support of our donors. Gifts to our annual funds help support many of our new initiatives and leadership at the forefront of progressive education. Every dollar matters because it directly supports our students, our faculty, financial aid, special programs, and a variety of other essential functions. When the fiscal year ended on June 30, 2023, together we had raised a collective \$10.2 million.

OVERVIEW OF REVENUE (\$ in millions)



OVERVIEW OF EXPENSES (\$ in millions)



*includes rent, utilities, and other operating expenses

OUR FINANCES

Balance Sheet as of June 30, 2023

ASSETS (\$ IN MILLIONS)	2023	2022
Cash and Cash Equivalents	\$1.32	\$2.59
Receivables (Includes Tuition Payments, Contributions, Grants, and Contracts)	\$8.34	\$9.38
Other Current Assets	\$2.84	\$1.65
Investments	\$48.34	\$46.97
Property and Equipment	\$26.15	\$28.18
TOTAL	\$86.99	\$88.77

Accounts Payable	\$7.15	\$7.96
Deferred Revenue (Tuition, Grants, and Contracts)	\$4.38	\$6.36
Line of Credit	\$4.00	\$2.00
Refundable Government Loan Program	\$0.64	\$0.64
Loans and Bonds Payable	\$16.57	\$17.09
Post-Retirement Health Benefit Plan	\$4.69	\$5.39
Other Liabilities	\$0.55	\$0.53
TOTAL	\$37.98	\$39.97

Unrestricted	\$4.35	\$4.33
Temporarily Restricted	\$19.91	\$20.03
Permanently Restricted (Endowment)	\$24.76	\$24.44
TOTAL	\$49.02	\$48.80



1916 GIVING SOCIETY

Named in honor of our founding year, the 1916 Giving Society recognizes donors who make annual gifts (including matching gifts) of \$1,916 or more in support of the Bank Street Annual Fund. Society members receive special recognition in Bank Street's Annual Report and are invited to a special event with the Dean of Children's Programs. To become a 1916 Giving Society member today, visit give.bankstreet.edu/SFC or contact Jeremy Wells, Director of Annual Funds, at jwells@bankstreet.edu.

Sujata Acharjee and Aniruddha Banerjee
Anthony Baer and Margaret Barry
Monica Barrett and Alexis Frazier
Joan K. Bick '78
Kristin Black and David Hensle
Emmanuel Boursin and Isabelle Berner
Susan H. Bralove '73 and Steven Bralove
Margaret B. Carey '74 and Tobe Carey
Srijoyanth Chakrapani* and Saileshi Patel
Marjorie S. Chernikoff '78 and Joel D. Chernikoff
Nancie Cooper*
Wadad Cortas '93 and John Lenahan
Jonathan Couchman and Arika Couchman
Mary Pat Draddy and Jonathan Rosenshine
Susan K. Dunn '00 and Thomas Dunn
Sergei Dzhosyuk and Katharine Chen
Dr. Gloria Farber '79
Jody Feldman and Brett Feldman
David Feldman and Katherine Markham
Sheldon Fleck and Terry Fleck
Geeta Fleck and Samuel Fleck
Nathaniel Fredman and Kimberly Roots
Russell Granet* and David Beach
Sarah G. Gund† '73 and Geoffrey Gund
Stephanie Gundogdu and Omer Gundogdu
halley K. harrisburg and Michael Rosenfeld
Anne D. Herrmann '70 and John Herrmann
Deon T. Hilger '79
Rita V. Hirsch '72 and John L. Hirsch
Dr. Robin E. Hummel '08 and Ralph Hummel
Augusta S. Kappner
James Lester and Heather Zuber
Lisa Lewin* and Daniel Ilundain
Brian Licata and Jessica Licata
Rebecca Lindenbaum '00 and Bennett Lindenbaum

Melinda M. Lyon '72 and John D. Lyon
Jacqueline Mahal and Benjamin Segal
Linda S. Martinson and Christopher Mayer
Mark McDougle and Ann Linden
Richard A. Metzler
Maxwell H. Meyers '90 and Sara Pick
Leslie D. O'Toole '19
David B. Orr '93 and Brant Wong
Elizabeth S. Pforzheimer* and Carl H. Pforzheimer
Rekha Ramani and Sameet Palkhiwala
Ann Ritter and Leo Korein
Terry S. Salinger '73 and Richard Cole
Deirdre Sawinski and Ernest Poon
Barbara A. Schatz* and Rick Schaffer
Judith E. Scheuer '92 and Joseph Mellicker
Kathleen Scott
George P. Scurria‡ and Janet Scurria
William Seligman
Anne V. Shutkin* '95
Darrell J. Silver '95 and Stephen Foley
Steven Silverstein and Maite Jimenez
David Smiley and Lauren Kogod
Jeffrey Q. Smith* and Marie-Noelle J. Smith
Alfred Spector and Rhonda Kost
Howard S. Stein* and Jill C. Stein
Lynn G. Straus†¶ '57 Bequest
Cecelia E. Traugh and Alexander F. Doan
Daniel Troiano and Danielle Troiano
Justin Tyack
Wendy Van Amson* and George L. Van Amson
Alexandra Wagner and Sam Kass
Francesca Weindling '86
Richard M. Wells
Jennifer D. Woodruff '95 and Kevin Woodruff

*Statutory Trustee † Associate Trustee ‡ Life Trustee § Parent Associate Trustee ¶ Deceased



“

My Bank Street experience helped me to develop as a lifelong learner and progressive educator. Bank Street is a special place where collaboration and caring for students is highly valued. I still reflect upon my experience many years later and am inspired by my teaching and education at Bank Street.

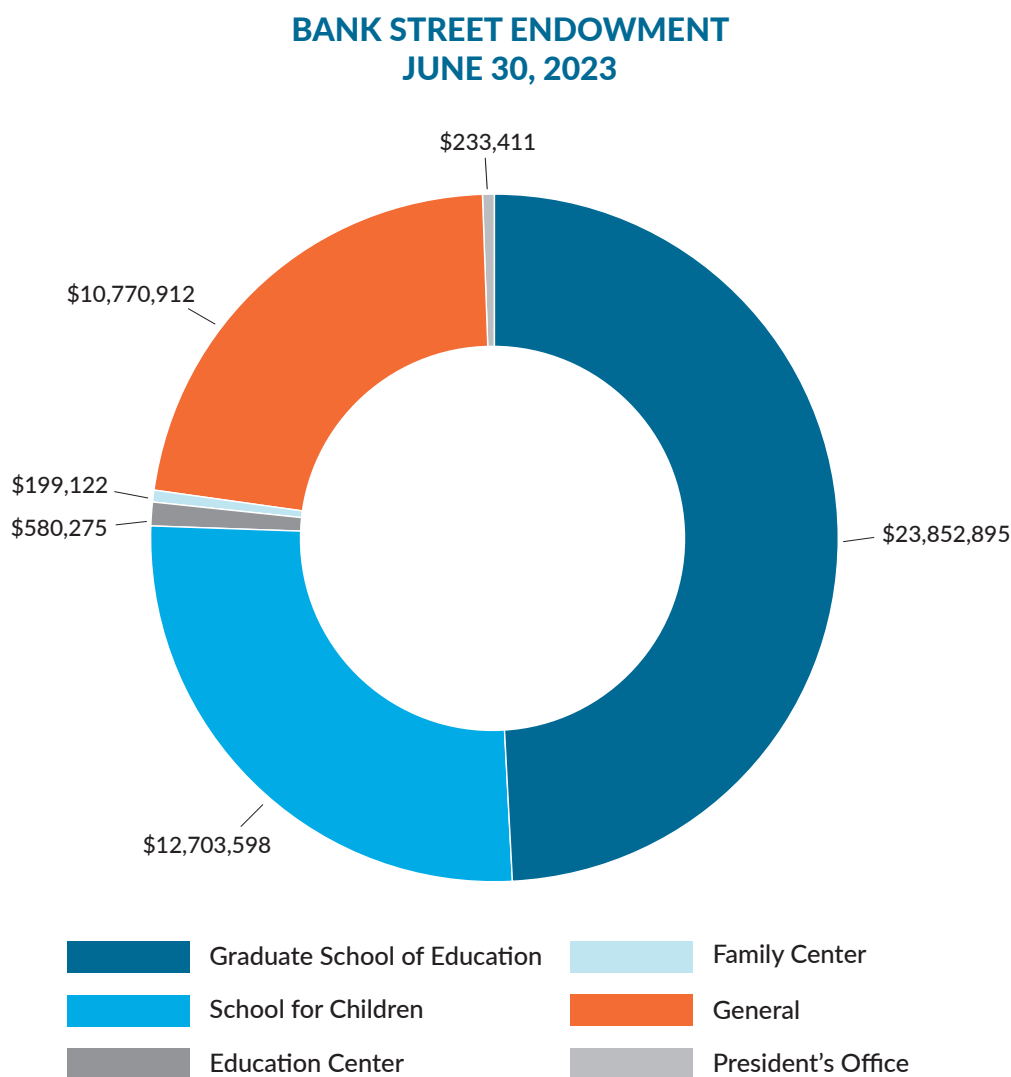
Richard Lee, GSE '96 and '11

Chief Academic Officer at Our World Neighborhood Charter Schools



OUR ENDOWMENT

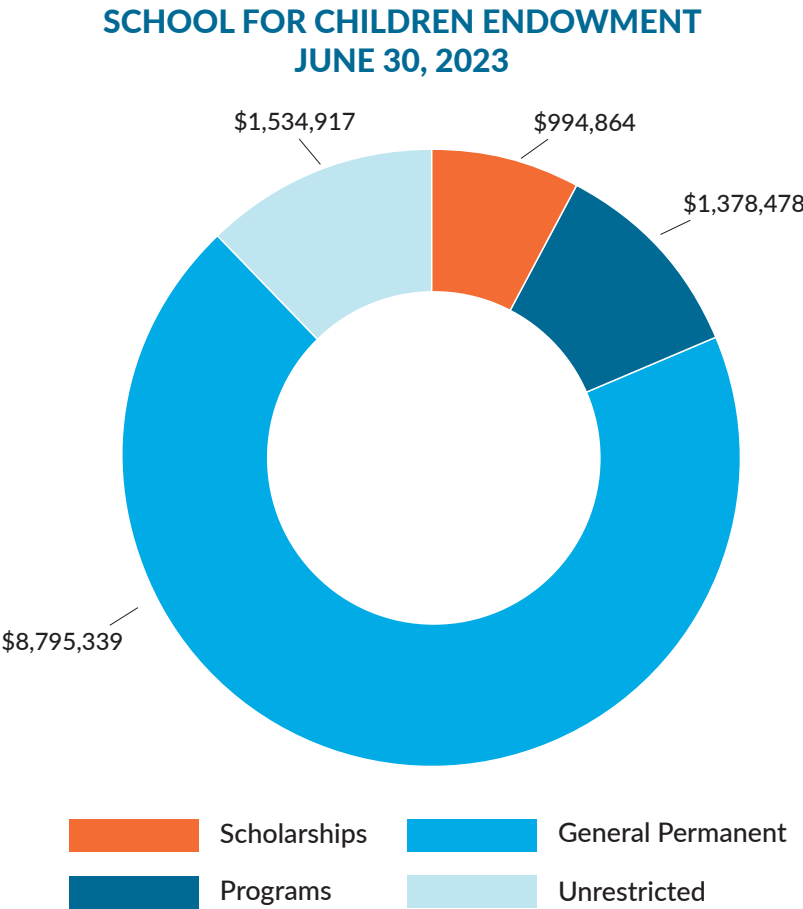
Bank Street's endowment, which totals approximately \$48.3 million, is primarily spent in three ways. These funds enable us to provide financial aid for students and families in the School for Children and the Graduate School of Education, which makes for a more diverse, representative student body. Additionally, a substantial portion is spent on professional development, which empowers Bank Street staff to fulfill their commitment as lifelong learners and ensures access to tools and resources necessary to provide the highest levels of education and instruction. Lastly, a portion of the endowment is spent on special initiatives and overhead operating expenses. If you are interested in starting an endowment or learning more, please contact Jane Donahue, Senior Director of Individual Giving, at jdonahue@bankstreet.edu or 212-961-3327.



CHILDREN’S PROGRAMS

Bank Street Children’s Programs is dedicated to providing children with meaningful opportunities to learn, grow, and reach their full potential. Today, our mission is more critical than ever before. Our families, faculty, staff, alumni, and friends place value on the experience we offer at the School for Children and Family Center, which provides child-centered programming for over 400 students.

The School for Children maintains a 6:1 student-teacher ratio, which allows our educators to foster trusting relationships with students that support deeper learning. Like other independent schools, we rely on philanthropy to bridge the gap between tuition dollars and the actual cost of educating each child. Donations also support financial aid for over half of the students in the School for Children, breaking down economic barriers for families and increasing access to a Bank Street education. When the fiscal year ended on June 30, 2023, we had raised a collective \$709,927.





“

Being able to not only learn, but also practice the Bank Street approach under the guidance of the School for Children has allowed me the ability to grow as an educator in ways I never imagined!

Brendan Barrett
Assistant Teacher, School for Children





“

Bank Street gave me the confidence, skills, and network to succeed in the classroom and beyond. Supporting aspiring teachers by ensuring they can earn a Bank Street degree is one of the most important and impactful contributions you can make.

Leslie O'Toole, GSE '19

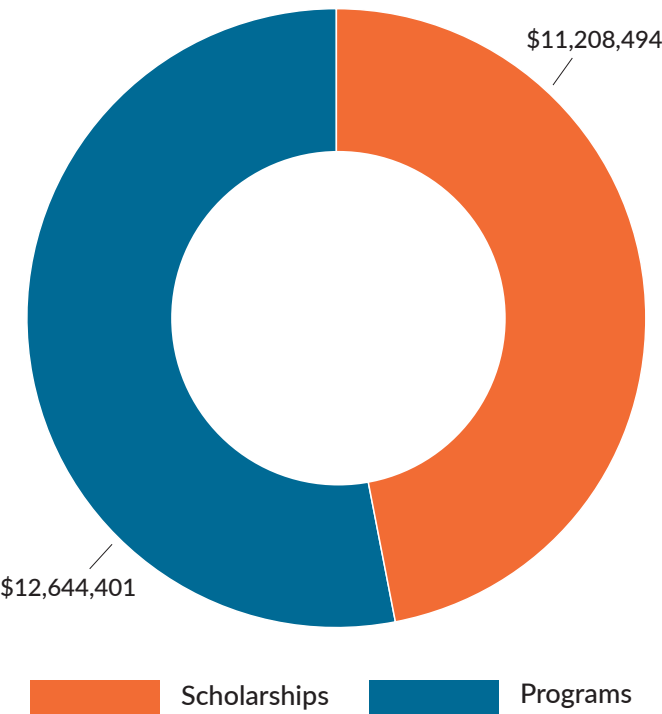


GRADUATE SCHOOL OF EDUCATION

The Bank Street Graduate School of Education relies on those who understand the power of progressive education—our alumni, faculty, staff, and friends—to help make it possible for more aspiring educators to enroll in our programs. With support from the Annual Fund, the Graduate School is able to provide financial aid to over half of our students, which increases access to a Bank Street education and places more Bank Street educators in classrooms and other learning environments across the country.

We provide over 680 students across more than 50 degree programs with the knowledge and skills needed to improve teaching and learning. In order to make a Bank Street education as accessible as possible, we have expanded our partnerships with districts and non-profits, as well as our online and hybrid learning options. This is especially important, as a study conducted by Stanford University found that our graduates remain in the field at higher rates, have higher confidence in content areas, and feel more prepared to support students' social-emotional development compared to counterparts who attended other schools of education. Your support strengthens our ability to attract and retain top students and faculty who are thought leaders in the field. When the fiscal year ended on June 30, 2023 we had raised a collective \$280,268.

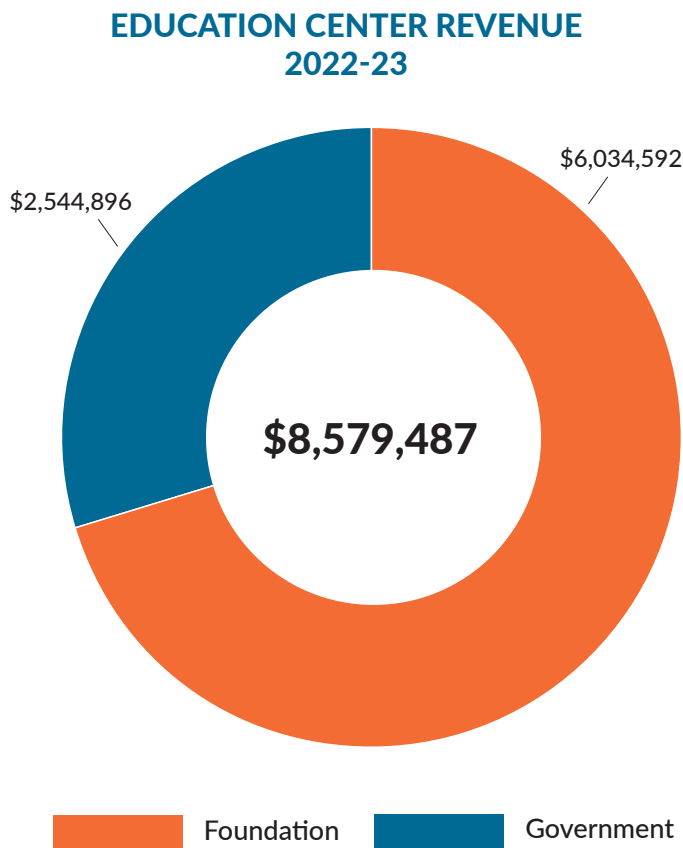
GRADUATE SCHOOL ENDOWMENT
JUNE 30, 2023



BANK STREET EDUCATION CENTER

The Bank Street Education Center believes in teaching and learning as expressions of justice. Our work supports school systems and policy leaders in creating equitable educational settings and meaningful change at scale. The Education Center partners with schools, district leaders, institutions of higher education, community-based organizations, and thought leaders to design high-quality educational experiences for both children and adults.

The Education Center’s public impact programs support system leaders in navigating real world challenges to help disrupt inequity in education and our professional learning programs help improve education and outcomes for all children. Your support helps us extend the Bank Street approach to education to thousands of educators in New York City and beyond.





“

Every time I go to my Bank Street fellowship, the topic of the day has immediate application to something that's happening at work, and I think, oh, I could use that tool to help lead my team around this thing that's happening.

Nikki Kovan

Director, Early Learning Services, Minnesota Department of Education
Bank Street Early Childhood Policy Fellow, 2022-23





LUCY SPRAGUE MITCHELL SOCIETY

The Lucy Sprague Mitchell Society recognizes donors who have elected to leave a legacy gift to Bank Street College of Education. By including Bank Street in their estate plans, members have demonstrated a resolute commitment to the future of progressive education. The generosity of our legacy donors ensures that Bank Street will continue to provide the best possible education to children and their teachers for generations to come. For more information on the Lucy Sprague Mitchell Society and how to become a member, please contact Tracy Snyder, Donor Engagement Officer, at (212) 961-3360 or tsnyder@bankstreet.edu.

Cynthia Adams '73
Rae Alexander-Minter '73
Jane R. Altman '68
Eileen Blank '91
Susan H. Bralove '73
Larry L. Bucher '73
Christine Caliandro '95
Joan Cenedella[¶] '75
Rosalind Chachkes '77
Mary L. Christie '68
Jim W. Clay '88
Esther Cohen
James G. Courage '96
Millicent M. Cox '75
Sandra Danu '71
Lois G. de La Pena[¶]
Denise A. DeShane '94
Diane T. Dodge '70
Virginia A. Durloo '88
Gretchen Dykstra '72
Jacqueline Ellis '72
Patricia Ensworth
Constance S. Germain[¶]
Edith J. Gilligan '04

Judith Gold '80
Gale Goldman '82
Sarah G. Gund[¶] '73
Ann Halpern '68
June H. Harland '59
Kathleen Hayes '93
Francesca Heller '73
Anne D. Herrmann '70
Carol B. Hillman '67
Rita V. Hirsch '72
Nancy Hopwood '79
Myra B. Ilson[¶] '51
Leila L. Javitch '83
Leslie Kandell '61
Teresa S. Karamanos
Judith E. Klein '71
Laura W. Martin '75
Susan Matthew '60
Jeffrey S. McCartney
Nancy Paull McKeever '76
Hal R. Melnick '74
Barbara P. Morgan '87
Katherine M. O'Donnell
Marion Palm '95

Elizabeth S. Pforzheimer*
Carla C. Poole '03
Beatrice Prentice[¶] '78
Jennifer L. Prout '09
Rena N. Rice '77
Virginia L. Ross '70
Ruth Saada '86
Terry S. Salinger '73
Ronnie Sampson '77
George P. Scuria[‡]
Jo Ann Secor '83
John A. Shutkin
Ellen J. Silverman '71
Joan O. Stern[¶]
Margaret L. Stevens^{‡¶} '77
Lynn G. Straus^{‡¶} '57
Corrin P. Strong[¶]
Yung M. Tang '82
Mary T. Timson '93
Jean B. Vitalis '80
Mary Ellen A. Warner '90
Joan K. Weltz
Nancy F. Wilson[¶] '67

*Statutory Trustee † Associate Trustee ‡ Life Trustee § Parent Associate Trustee ¶ Deceased

THANK YOU TO OUR DONORS

Donor list: If your name is listed incorrectly, please let us know at giving@bankstreet.edu.

\$100,000+

Anonymous
Eleanor B. Barrett '77
Charles R. Bendit* and Karyn K. Bendit

Diane T. Dodge '70 and Lowell Dodge
Lynn G. Straus†¶ '57 Bequest

\$50,000-\$99,999

Anthony K. Asnes* '75
Nancie Cooper*

Victoria Hamilton* and John A. Slowik

\$25,000-\$49,999

Anonymous
Kristin Black and David Hensle
Jonathan Couchman and Arika Couchman
Geeta Fleck and Samuel Fleck
Russell Granet* and David Beach
Anne L. Gwathmey and Archie Gwathmey
Christopher Kellen*
James Lester and Heather Zuber

Adam Litke* and Bridget Collins
Elizabeth S. Pforzheimer* and Carl H. Pforzheimer
Sandra Pinnavaia* and Guy Moszkowski
George P. Scurria‡ and Janet Scurria
Darrell J. Silver '95 and Stephen Foley
Jeffrey Sussman* and Susan Sussman
Gideon Walter and Reva Jaffe-Walter, PhD
Rosemary K. Young* and Scott H. Young

\$10,000-\$24,999

Anonymous
Melissa Beattie and Scott Beattie
Joan K. Bick '78
Emmanuel Boursin and Isabelle Berner
Phoebe Boyer and Todd Snyder
Brook Byers and Shawn Byers
Wadad Cortas '93 and John Lenahan
Jeffrey Cox and Caren Cox
Susan K. Dunn '00 and Thomas Dunn
Dr. Gloria Farber '79
Jody Feldman and Brett Feldman
David Feldman and Katherine Markham
Roger W. Ferguson and Annette L. Nazareth
Felice S. Friedman* '76 and Darrell Friedman
Jody Gorton
Matthew Gross
Stephanie Gundogdu and Omer Gundogdu
halley K. harrisburg and Michael Rosenfeld

Deon T. Hilger '79
Carol B. Hillman '67
Dr. Robin E. Hummel '08 and Ralph Hummel
Kathryn Kamm and Matt Kamm
Kristen V. Kane* and Matthew M. Onek
Kenneth B. Lerer* and Katherine R. Sailer
Lisa Lewin* and Daniel Ilundain
Jessica Licata and Brian Licata
Woody Marshall
Leslie D. O'Toole '19
Evan R. Pariser
Dr. Laura Parsons and Richard D. Parsons
Camilla Rab and Robert Packer
Donna Ritchie
Ann Ritter and Leo Korein
Deirdre Sawinski and Ernest Poon
Barbara A. Schatz* and Rick Schaffer
William Seligman

*Statutory Trustee † Associate Trustee ‡ Life Trustee § Parent Associate Trustee ¶ Deceased

\$10,000-\$24,999

John M. Shapiro and Dr. Shonni J. Silverberg
Jeffrey Q. Smith* and Marie-Noelle J. Smith
Darcy Stacom
James S. Tisch and Merryl H. Tisch

Cecelia E. Traugh and Alexander F. Doan
Londa Weisman
Valerie Williams and David Williams

\$5,000-\$9,999

Anthony Baer and Margaret Barry
Susan H. Bralove '73 and Steven Bralove
Peter Braus
Heather Bynoe
Srijayanth Chakrapani* and Saileshi Patel
Jonathan R. Cole* and Joanna L. Cole
Steven Davidson
Mary Pat Draddy and Jonathan Rosenshine
Sergei Dzhosyuk and Katharine Chen
Earl E. Engle
Sheldon Fleck and Terry Fleck
John Frank and Diann Kim
Becky P. Goss and Michael F. Goss
Susannah Gray and John Lyons
Gary Handel
Douglas L. Harmon
Anne D. Herrmann '70 and John Herrmann
Rita V. Hirsch '72 and John L. Hirsch
Martin P. Kehoe and Mary Kelly-Kehoe
David Kriss

Beth Leventhal and Ira Leventhal
Rebecca Lindenbaum '00 and Bennett Lindenbaum
Jacqueline Mahal and Benjamin Segal
Alison Overseth and Kenneth M. deRegt
Tory Patterson
Stacey J. Rappaport and Craig S. Solomon
Susan T. Rolander '07
Lauren Razook Roth and John Roth
Pascaline Servan-Schreiber and Kevin Ryan
Richard Sarnoff and Ann Sarnoff
Judith E. Scheuer '92 and Joseph Mellicker
Samantha Sheeber
Glen Siegel and Amy Siegel
Steven Silverstein and Maite Jimenez
David Smiley and Lauren Kogod
Howard S. Stein* and Jill C. Stein
Aaron Straus
Wendy Van Amson* and George L. Van Amson
Francesca Weindling '86
Jennifer D. Woodruff '95 and Kevin Woodruff

\$1,000-\$4,999

Iris Abrons
Sujata Acharjee and Aniruddha Banerjee
Michal Alter and Uri Meller
Pamela J. Anderson Sparks '03
and Wesley W. Sparks
Tove E. Andvik '74
Sara B. Ardrey '03 and Robert G. Ardrey
Farhad Asghar and Ana Tiburcio
Jason Baker and James Augustine
Dr. Nancy Balaban '55
Lucy Ball and David Ball
Monica Barrett and Alexis Frazier
William Barrett[†]
Paul W. Barrett
Jane Beatty

Laura Becking and Ashley Gillespie
Dr. Lisa Belzberg
Bert Berkley
Ariana Berry '97 and Eric Z. Berry
Jaclyn Blake and Jonathan Blake
Jean Burden and Ordway Burden
Debora T. Cahn and Michael Heller
Dr. Don Capoccia
Margaret B. Carey '74 and Tobe Carey
Ana Cepeda and Maria Diaz
Howard Chatzinoff and Leslie Chatzinoff
Marjorie S. Chernikoff '78 and Joel D. Chernikoff
Daniel Cogan-Drew
Terry M. Cohen '97 and Joel I. Cohen
Margo R. Cohen and Irving Cohen

\$1,000-\$4,999 (continued)

Susanna Cole '92
Lisa Cross
Rossmery Dais and Landon Dais
Nicholas De Martini
Susan Dreher and Gregg Markarian
Leslie Dubitsky
Cara G. Eisen '09
Nina Essman and Jon Freeman
Yael Even Moratt and Yonatan Even
Dr. Stephanie Feeney
Erika Feldman '87
Carmen Fernandez '68 and Michael Jacobs
Mariela Flambury-Williams and Damian Williams
Diane A. Fogg '82 and Blaine V. Fogg
Ayirini Fonseca-Sabune and Zachary Lazar
Alice Ford '12
Richard Friedberg
Ellen V. Futter
Michele Ganeless
Dr. Ellen Stern Garland '84
Baruch Glaubach
Taegan Goddard
Anne Goldrach
Anne Grand and Paul Grand
Luis Gravano
Jillian C. Griffiths and Ellis Griffiths
Sarah G. Gund[†] '73 and Geoffrey Gund
Marcela Hahn and Alfred Kelley
Maura Harway and Richard Mark
Elizabeth Havens and Jason Havens
Berte E. Hirschfield '73
Margaret Honey*
Emily Hostage
Doug Jaffe
Sharon Jean-Pierre and Leslie Jean-Pierre
Ellen Jewett
Amy Johannes
Leslie Kandell '61
Marjorie Kaplan and Gustav Szabo
Sue A. Kaplan and David Karnovsky
Augusta S. Kappner
Gregory Kerr
Fern Khan*
Daniel Kheel and Jillian Kheel

Kathleen M. Kheel
Robert J. Kheel and Leslie Mazza
Douglas R. Knecht and Stephanie Guyet
Steve Kohn and Yvette Kohn
Daniel R. Kramer
Priscilla H. Lambert '96 and James F. Fulton
Micah Lasher and Elizabeth Mann
Jane Levitt and James Levitt
Gary Levy
Deborah G. Litt '82 and Robert S. Litt
Cindy Liu and Patrick S. So
Janine Luke
Phoebe R. Lynch '05
Melinda M. Lyon '72 and John D. Lyon
David Magrone and Julia Magrone
Daniel W. Mahle
Elizabeth Mann '97 and Stuart Waldman
Jennifer Marshall
Linda S. Martinson and Christopher Mayer
Risa L. May '96 and Bradford J. May
Makeda Mays Green
Marianna McCall '22 and Mark McCall
Mark McDougale and Ann Linden
Preston McGowan
Alan H. Medville '79 and Roberta A. Miller
Samanta B. Mehta and Karan Mehta
Ivy A. Metz '91
Richard A. Metzler
Maxwell H. Meyers '90 and Sara Pick
Roger Miller
Rachel L. Miller and Kent G. Becker
Kimberly Miller and Ian Pancham
Rachel E. Miller and Alan Epstein
Vladimira Mircheva and Bradley Bennett
Kat Monaghan
Margaret Morse-Schindler and George de Brigard
James A. Neuberger '85 and Helen L. Stambler
Eric Nielsen and Carolyn Louth
Jennifer E. Nielsen Feldman '10
and Michael Feldman
Laurel F. Odom and Stephen F. Odom
Jill Olson and Brian Olson
Shael Polakow-Suransky* '00 and Cynthia Hanawalt
Robert Pruzan and Tracy Winn Pruzan

\$1,000-\$4,999 (continued)

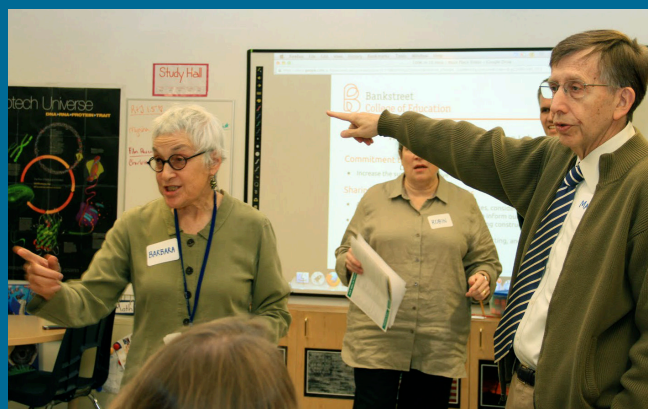
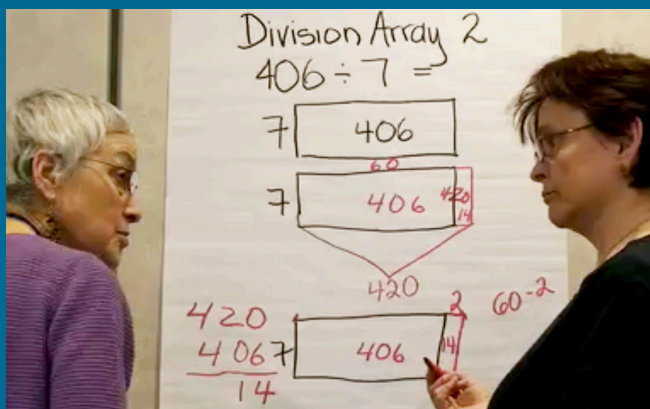
Hillary G. Quist '99
Rekha Ramani and Sameet Palkhiwala
Lesli Rice and Louis E. Slesin
William Rieders
Andrea P. Robbins '96 and David S. Robbins
Michele Roberts
Kimberly Roots and Nathaniel Fredman
Katherine R. Rosenfeld and Jeffrey M. Miller
Allison Rothman
Kira E. Sadaka '09
Alexandra Sadowy and Guy Dicks
Terry S. Salinger '73 and Richard Cole
Thomas Schoenwaelder
and Zeynep Schoenwaelder
Jolie Schwab and David Hodes
Scott Schwartz and Julia Motyka
Kathleen Scott
Ritchie M. Scribner '79 and Charles Scribner
Pamela A. Shaftel '72 and Mel A. Shaftel
Rachel Shapiro and Christopher Grymes
Deborah I. Shipler '69 and David K. Shipler

Anne V. Shutkin* '95
Margot Sigmone
Mariko Silver and Thom Loubet
Nikki Slesin '07
Judy Slotkin and Todd Slotkin
Andrew Snyder and Molly Snyder
Alfred Spector and Rhonda Kost
Ladd Spiegel
James Spigel
Allyson Spurling and Patrick Comaskey
Abraham Stein and Sabrena Silver
Barkley J. Stuart
Kate Sussman^S '98 and Aaron Hawn
Robyn Tang
Travis H. Terry '89 and Rebecca Velez
Daniel Troiano and Danielle Troiano
Maria Tsepilovan Edman and Jeremy Edman
Justin Tyack
Petra Valentova and Gaurav Gupta
Emily B. Van Agtmael '76
and Antoine W. Van Agtmael

REMEMBERING BARBARA DUBITSKY

“Creating a scholarship offers us an opportunity to honor Barbara’s passionate interest in teaching and learning, and her dedication to math education and to Bank Street, for years to come.”

Bruce Barrett, GSE '77, wife of Barbara Dubitsky



Barbara Dubitsky, EdD (1940–2022) was the former director of the Leadership in Mathematics program at Bank Street College of Education. She helped create and then served as the co-principal investigator for Math for All, a program at the Education Development Center in New York City.

\$1,000-\$4,999 (continued)

Rachel Ventura and Johanna Fifi
Andrew Vogel
Alexandra Wagner and Sam Kass
Suzanne Walters and John Lee
Suzanne Waltman
Julia L. Washburn '99 and William M. Kules

Jane B. Webbink Goldman '85
and Charles Goldman
Susan N. Wilson '76
George T. York '82
Debbie Zlotowitz* '90 and Rick Greenberg

\$500-\$999

Joseph Abraham and Mabel Abraham
John C. Adams
Herbert H. Adasko and Rochelle W. Adasko
Jessica Anzelone '09 and Adam Brown
Ana V. Au '07
Luis Barbier and Jannice Barbier
Anne M. Bedrick '90 and Scott Bedrick
Marcia H. Bennett '79
Marielle Blackburn and Benjamin Gilbert
Bob Bruder
Sorin Buiga
Alexander I. Burns '00 and Min Jung Lee
Michele Cahill
Liz Careathers and Jaime Careathers
Kenneth R. Cerini
Luyen Chou
James Cole Jr.
Barbara Coleman
Jennifer Coogan
Sophie C. Cook
Mimi Corcoran
Jeannette M. Corey '17
Alison Coviello and Richard Ouimet
Sasson Darwish and Lynne Abeles-Darwish
Erica R. Davis '11
Valerie S. Deas[†] '79
Elizabeth D. Dickey
Josefina O. Disterhoft and John F. Disterhoft
Mark M. Edmiston
Mariana Elder Rosen
Dolores Elkin '88 and Joseph Rubin
Andrea F. Elliott and Timothy Golden
Priscilla Ellsworth
Jeanne C. Esposito '78 and George E. Karras
Marina Famiglietti
Susan Fox and Robert Dichter

Tamara C. Fox
Donald P. Freedman '82
Ellen M. Galinsky '70 and Norman Galinsky
Ofelia Garcia*
Silvia Garcia Mora Pinto and Nadeem Janmohamed
Andrew E. Gardner '03
Dr. Mark Gilbert '58
Thomas M. Green '74 and Eve Green
Diane F. Green '72 and David B. Joseph
Chris Griggs and Angela Griggs
Manoj Gupta and Vivien Chan
Audrey Hager
Anna D. Halperin and Evan Halperin
Ann S. Hampson '85 and Todd Hampson
Tulle Hazelrigg and Martin Chalfie
Campbell Hellandsvik
Alice Henry '92
Jill K. Hicks '80 and James L. Hicks
Anne Marie Imbomone
Nefertiti Ingalls
Linda Jacowitz
Christine Javier and Ramon Javier
Leila L. Javitch '83
Jessica Jonas and Adam Jonas
Nicole Kahn and Ian Kahn
Jill Kaplan and Myron L. Kaplan
Daniel Karlin '93
Sarah B Kendall
Abigail A. Kerlin '00 and Wade Tucker
Candis Cousins '72 and Bruce W. Kerns
Suzanne Koppelman '92
Alice W. Kraus '00 and Douglas Kraus
Robin Lifton
Bianca Lila
Tiffany Mack '17
Joseph W. Madero '72 and Rosemarie Madero

\$500-\$999 (continued)

Venkata Mahalakshmi Prudhivi
Elyse Matthews
Maggie Maurone and Jeffrey Maurone
Gloria Maximo and Shawn Mackinnon
Hillary A. Mayers and Stephen M. Poppel
Mignon R. Moore and Elaine Harley
Ann M. Morgan '76
Dr. Amy S. Narishkin '89 and Cyril Narishkin
Miri Navasky '82 and David L. Mizner
Ben Neulander
Morgan Nixdorf and Mark Nixdorf
Michela F. Nonis '09
Lori O'Brien
Deborah Paredez and Frank Guridy
Margery Perlmutter '68
Patricia K. Pincus[¶] '76
Lindsay Pitzer and John Pitzer
Michelle Powers[§] and Jeremy Brisiel
Jamie Ragusa and Paul Ragusa
Nargiza Rakhmonova
Alysia M. Reiner and David A. Basche
Evi M. Rivera Williams '99
Ian Rosenblum and Lynn Cole
Susan Rosenthal '83
Atoosa Rubenstein
Thadeus Rudd
Milena Sales and Raul Martinez Fernandez

Matthew Saleses
Abigail Samaha and Adam Samaha
Adriel Sanchez
Kristen Sauer and Harry Sandick
AnaCarla Schelino '02 and Matthew Seemann
Bari Seiden-Young
Kathie Shutkin and John A. Shutkin
Ira Silberstein and Amy Serwer
Brad Silver
Leah A. Silver '17
Hanna Skandera
Jenny Sobelman
Emily Stein and Tony Stein
Patty W. Strom '09
Amy Stuart Wells
Beverley Sutherland and Sunil Kumar
Mary T. Timson '93
Michèle Urvater
Carlos Velazquez '16 and Melissa Velazquez
Christopher Walther and Song Han
Emily White
Catherine S. Whittington '78
William Wood
Priscilla P. Woyke '96 and John F. Woyke
Paula B. Young '94 and Jackson M. Young
Sharon Zane and Gregory Macosko

\$250-\$499

Labiba Abdur-Rahman '93
Amanda Adams
Alisa R. Algava '08
Divya Anantharaman and Sriram Subramanian
Julie A. Applebaum '07
Elizabeth A. Ascoli '00 and Avi A. Tsapira
Catherine M. Audage '07
Gergely Baics and Caterina Pizzigoni
Anthony Barrett
Elizabeth Block '83
Erika L. Blumberg
Priscilla Boyle and Michael Boyle
Valentine Burr and Steven Friedman
MacKenzie Cadenhead '90
Jiao Chen and Zeyu Zhang

Carla Clarke-Wu and Jeffrey Wu
James W. Clay, Jr. '88 and Arthur Blecher
Vivian Cook
Judith L. Deppe '80
Johanna Dobrich and Sarah Milburn
Yana Domuschieva and Anton Gorbounov
Sarah H. Dorer '79
Laura Drachman and Sergio Troncoso
Constance Dubin '74
Peter A. Dubin[¶]
Nicole Duignan and Joshua Pittman
Camille P. Ehrenberg '02 and Peter Ehrenberg
Rebecca B. Eisenberg '09 and Brendan Cheney
Rachelle J. Epstein '75
Thomas Eshelman and Nancy Eshelman

\$250-\$499 (continued)

Donna Fishman and Steven Cohen
Aidan Flaherty and Alfred Chung
Glenora Forde
Helen Foster
Selena Fowler Keegan '88
Rebecca Fraioli and David Lundell
Nathaniel Garnick and Abigail Garnick
Phoebe Gebre and Henock Assefa
Susan Goetz-Haver '93 and Kyle Goetz Haver
Carol S. Goldberg '70
Michael Gong '92
Vivien R. Gordon '93 and Sherwin Gordon
Stephen Gross and Susan Gross
Eric F. Gutierrez
Kathy K. Hakim
Samantha Hakim '16
Linda R. Henigin '02 and Greg Brail
Karen M. Heron '97
Katharine E. Hungate '01
Rachel Hyacinthe
Katie P. Iger '93 and Keith L. Andre '20
Nina Jaffe '82 and Robert F. Armistead '82
Emily Jones
Marty Kahn and Wendy Kahn
Cathy A. Kaufman Iger '79 and Mark Iger
Justine P. Keithline '05
Javaid M. Khan '88 and Gillian M. Todd '03
Peter Knobler
Phylia Kohl '70 and Marvin Kohl
Edward Koral and Leah Lipton
Michelle R. Krumland '01
Monica Kukelhaus and Charles Miller
Sabado Lam
Jeanne C. Lamb
Eve R. Lazovitz '06
Elizabeth A. Levy
Nina Liu '92
Kelly Lorenz
Rebecca Mandelman '93 and Clement Fatovic
Laura W. Martin '75
Judith W. Matchett[†] '47 and William Matchett[†]
Daniel McCarthy
Robin McIntyre and Kheil McIntyre
Nancy P. McKeever '76

Claire H. McNeill '66 and Robert K. McNeill
Hollis K. Milark '87
Victoria Mills and John Flock
Ellen L. Mishkin '78 and Andrew Mishkin
Heather J. Mitchell '05
Virginia H. Morsman
Nichole Naranjo and Shuber Naranjo
Patrick Norton
Karen M. O'Neill '03 and Stephen H. O'Neill
Anna Ortega-Williams and Andrea Ortega-Williams
Deborah H. Ostrosky '84 and Richard P. Schmit
Jean Panko
Karen O. Patteson '03 and Gary Patteson
Yoland Philpotts and Sridevi Palanivelu
Mervyn J. Punnett
Ilene L. Railton '73 and Stephen F. Railton
R. W. Rappel
Dr. Gretchen H. Reynolds '82
Thomas W. Roderick '72 and Maxine E. Phillips
Caroline W. Romans
Ruth Rosaler and Joshua Rosaler
Gillian E. Rosenfeld and Eric Rosenfeld
Sarah L. Ryan '96 and Robert M. Wieman
Sarah Saltzberg and David Tirosh
Suzanne Sato and Tim Hawkins
Gil Schmerler
Caryn E. Schorr '12
Jennifer Schriever and Joseph Varca
Becky H. Scudieri '08 and Christopher Scudieri
Joy T. Segall '72 and Richard E. Segall
Samuel Shapiro '96 and Andi Shapiro
Marci R. Shore and Richard Shore
Margaret W. Singer '88
Joanne Spadoro
Renaldo Stultz
CK Swett
Mark Tecotzky and Nina Jaroslaw
Judith Terk Futterman and Philip Futterman
Albertha S. Toppins
Gretchen Vice '01
Aaron Viny and Aly Viny
Sam Waterbury
Dana M. Wheeler '09
David Whittington

\$250-\$499 (continued)

Vanessa Wilcox '92 and John Wilcox
William Wilcox '03
Daniel Wilhelm

Daniel Winston
Julia Yang and Christopher Kim
Marissa Zalk and Cody Zalk

\$1-\$249

Robin A. Abeshaus '92 and Stephen Kalm
Alexander Abrahamson '03
Virginia Abrams '79 and Stephen R. Abrams
Deena Abulughod
Raymond O. Acevedo '13
Marilyn Ackerman
Fred J. Acquavita '81 and Marie L. Acquavita
Vanessa Agard-Jones
Angelines Alba Lamb and Michael Alba Lamb
Evelyn Albert '90 and Kenneth S. Albert
Andrew Albstein
Kristina C. Alden '12
Anna Allanbrook '81
Timothy Allanbrook
Karen Allocco-Rowe '02
Zachary Alpern and Pria Alpern
Angelique Anderson-Nunez and Yarnis Nunez
Lourdes Andre
Kate Andrias and Nicholas Allen
David Anselmo and Amy Anselmo
Barbara K. Armour '84 and Lawrence Armour
Elizabeth Armstrong and Hector Armstrong
Mona S. Arriola McNamara '03
Susan Arshack
Kathryn Aschliman '67
Don Ash
Linda K. Ashcraft '67
Krista F. Atkeson '92 and James G. Atkeson
Melinda Atsin and Barthelemy Atsin
Joan Auclair
Robert S. Avstreich '72
Margaret Bachenheimer '70
 and Steven L. Bachenheimer
Sari Bahl '70
Elsa K. Bailey '71
Robin W. Baker '80 and James Baker
Katherine E. Baldwin '02
Celia M. Baldwin '02
Parul Bansal

JiaQi Bao
Mollie A. Bass '02
Margo A. Bayroff '90
Nancy L. Beal
Purva Bedi '88 and David Stoler
Amadoma Bediako '93
Montina Befus and Joel Befus
David E. Behrman '69
Alice B. Belgray
Helen E. Bellas '79 and Michael C. Bellas
Shara Benison
Katie Benn and Adam Benn
Luke Berchowitz and Elena Micich
Jill A. Berie '75 and Michael Berie
Elizabeth Berkowitz and Marc Tobak
Jill S. Berman
Michele Berman '87
Elizabeth F. Bernhardt and William W. Bernhardt
Lynn Bernstein '07
Sarah A. Bevington '96
Merrill P. Biancosino '74
Betsy Blachly '90 and Henry B. Chapin
Jane E. Bloom '88
Andrew Boatti and Raomej Boatti
Maria G. Bolanos
Elaine C. Bonoff '81 and Edward L. Bonoff
Michelle Boyd '20
Julia R. Bradford '97
Marion M. Bradford '95 and John Bradford
Juliana Brennan
Lisa E. Breslof '97
Crystal K. Bria '88 and John Bria
Wade Brill '03
Jennifer A. Brock
Ward G. Bronson '94
William E. Brown
Jennifer M. Brown
Margaret Brown
Davia Brown Franklyn '97 and Nicholas Franklyn

\$1-\$249 (continued)

Larry L. Bucher '73	Denise Colina and Daniel Duignan
Stephen Buck and Vanessa Perez	Dorothy H. Conforti '72 and Joseph A. Conforti
Eileen Burgos and Justin Razon	Kristin M. Conklin
Conor Burnett	Carly N. D. Conrad '17
Jeffrey P. Byrd '74	Morgan Constable
Jean W. Cahouet '70	Michael Cooper '99
Katharine Calhoun '90	Elizabeth Cooper and Jay Cooper
Christine Caliandro '95	Mary Corbelli
Denise L. Callaway '09	Susan Cordier
Jeanne Calloway '08 and Isaac Saposnik	Judith Coven '77 and Curtis Coven
Dr. Emory Campbell	Gertrude G. Cromwell '77 and Julius Cromwell
Margaret C. Campbell	Caltha A. Crowe '90
Mario Cancel and Edline Jacquet	Marina Cruz
Patricia B. Carney '82	Michael Cudney
Mary Carr	Pamela M. Cummins '88 and Theodore R. Cummins
Celeste Cassius	Ruth G. Cunningham '75
Connie S. Castro '76	Eileen Curtis-Kleinman '86
Christopher Caswell and Eran Shacham	and Joseph Kleinman '84
Stanley Cavell and Cathleen C. Cavell	Mary A. Cushman '02 and Frederick L. Daly
Delia V. Cerpa '75	Jeffrey S. Dacales '93
Rosalind Chachkes '77	Naomi Danis '74
Jessica Chaiken '83	Sandra Danu '71
Diane Y. Chan '84 and Kevin C. Chan	Patricia David and Simeon David
Shirley Chang and Christopher Chen	Judith Davidson
Theresa Chang	Stephanie L. Davidson '67
Jessica E. Charles [†] '21	Helen M. Davis '88
Aidan Y. Chen	Matthew P. Davis
Christine P. Chen '76	Chloe Davis '19
Dr. Josefina Choe	Mary L. Day '76
Serena Chong and Alistair Gretaarsen	Donna C. Degaetani '74
Elly Christophersen	Alison Demos
Rebecca H. Chynsky '13	Roland Descoteaux
Carolyn Claude	Jaime L. Desormeaux '17
Bobbie B. Cobbs '75 and Robert Cobbs	Zosha Di Castri and David Adamcyk
Sara W. Cohen '65 and George M. Cohen	Julie Diamond '73
Deborah Cohen	Sonia G. Diaz '04
Victor Cohen	Matthew C. Dickstein '09
Laura Cohen	Portia R. Dillard '92
Noah T. Cohen '81 and Sandra Cohen	Alan O. Dixler
Judith L. Cohen	Deborah E. Dixler '82
Noah Y. Cohen '00	Ariel Dlugasch
Barbara Cohen-Stratyner '92	Glorine Dobbins Edwards '74 and John J. Edwards
Susan L. Cole '16	Karen Dobkin
Jean C. Colebank '03	Lisa Dombrow '91

\$1-\$249 (continued)

Paula Dombrow and Mari Diaz
Jane Donahue
Alma Donnelly
Kristina Douglass and Scott Douglass
Monica Drayton and Travis Drayton
Geoffrey K. Dube and Jennifer Langsdorf
Julian Dufault '03
Gretchen Dumler
Dinh Loc Duong
Anne F. Echols
Courtney Echols and Mark Penn
Patricia Edwards and Eric Gottlieb
Juliet Eilperin
L Rivka Einy
Ellen Elias
Francesca Elms '78 and H. J. Drucker
Kerry M. Elson '11
Anne L. Ennis '16
Sarah Eskin Drake '99 and Peter Drake
Nicki Eybel '88
Frances W. Fairchild '82
Hsiao-yi Fan
Sandra Farber
Rebekah Fassler '68 and Norman Fassler
Joseph L. Fava[†] '84
Louise Fay Bergman '75
Andrew Fay-Bergman
Ann Feddersen '78
Matti Feldman
Susan Feldman and Michael Feldman
Joan Fenton
Adam Fields and Anne K. Sutherland
Michael Fields
Aurora Fields and Jonas Fields
Elaine Finsilver
Mary K. Fitzgerald '76
Kim M. W. Fitzgerald '72
Michelle Fizer Peterson
Diana Fleisher '96
Gayle Floyd
Rachel Ford '22 and Alejandro Marx
Franciene Forte
Xiania G. Foster '10
Susan H. Fountain '83

L. Kent Fowler and Juline Douglas
Alex Fralin '01
Dr. Helen Freidus
Jill Freinberg '75 and Mitchell B. Freinberg
Tuere Frere-Johnson and Darryl Johnson
Sally L. Frey '83
John Frisch
Wade Fuller '00 and Deborah Fuller
Amanda Fuller and Steve Whigham
Gloria Fung Chaw and Benjamin Eckhardt
Lionnetta M. Gaines '79
Tara Galano and Greg Galano
Margaret Gambaro '16
Naomi Gams-Towers '78 and Frederic J. Towers
Alison H. Gann '91 and Bradley B. Gann
Joanne R. Gannett '81 and Robert Gannett
Alejandro Garcia
María D. C. García '89
Melissa Garner Adelman and Jesse Adelman
Lisa Gavell and Theodore Fair
Lena Gaviria '03
Lois A. Gelernt '81
Miguelina German and Anthony Mercado
Lisa A. Gershon '01
Janai J. Gilkes '20
Natalie N. Gitelman '78 and Sheldon Gitelman
Susannah Gold
Miriam M. Gold '78
Donna Goldberg and Marc Goldberg
Judith E. Golden '74 and Andrew S. Luck
Michael Golden
Tanisha Golding
Elizabeth A. Goldman '99
Mara S. Goodman '00 and Shawn Gargagliano
Laura Gorin '80 and Abbott Gorin
Jean M. Goto '98
Tsuru Goto '93
Alexandra Grannis
Carla D. Grant '91
Phillip Grant and Nicole Innis Grant
Juliet S. Gray-Moliere '04
Melinda Greenblatt
Linda C. Greengrass and Alan Greengrass
David Greengrass

\$1-\$249 (continued)

Robin R. Greenwood '85
Renee M. Greig
Jeffrey L. Greim '75 and Elizabeth L. Dixon
Cathy B. Griffin '93
Marion A. Grillon '73
Suzanne Gross
Ari Grunzweig and Heather Huff
Jackeline Guerra and Felix Castro
Kay D. Gunderson '85 and Barry L. Gunderson
Shanida Gutierrez '18
José A. Guzman
Phyllis V. Haldeman '67 and Kenneth Haldeman
Persis G. Hamilton '67
Patricia Hannum '94
Diana D. Hansard '75
Kathleen I. Harper '80
Sandra T. Hart '92
Karen S. Hartman '75
Randee P. Haven-O'Donnell '95
and Gerry Haven-O'Donnell
Karen G. Hawkins '13
Edward Hawkins '03
Samantha A. Hay '07 and Joshua M. Krinsky '08
Jacqueline Hayes '07
Michelle M. Healy '13
Mara Heiman-Sunshine and Andrew Sunshine
Elizabeth Helbraun '84 and Joshua D. Blackman
Jennifer F. Helies '10 and Bradley W. Helies
Alice B. Heminway '16
Carol S. Henderson '82
Paula Hercules '15
Margot Herrera and Jamie Lawrence
Dorothy S. Hill '59 and William F. Hill
Philippa G. Hindman '80 and Hal B. Hindman
Janie L. Hirsch '71
Elisa Hirvonen '06
Raphael E. Hockstein and Deborah K. Hockstein
Martin J. Hoffman '78 and Jane O'Shaughnessy
Margaret L. Hoffman '79
Phyllis M. Hoffman '74
Katherine Hoffman '72
Adrian Hogue '13
Karen A. Hughes '15

John Humphreys
Irene E. Huntoon '96 and David A. Reiser
Naomi Hupert '92 and Ben Kinmont
Amanda Iger '95 and James Berland '96
Michele L. Imhof '16
Jenny Ingber and Eric Ingber
Orville O. Ingram
Gary Ireland
Elizabeth W. Isles '03 and Christopher Isles
David Itzkoff and Amy Justman
Susan W. Jackson and William M. Jackson
Anne Jacobs and Robert Jacobs
Patty C. Jacobs '78 and Donald Jacobs
Roselaine Jacques
Edallia K. Jakobsche '88
Evan W. Jenkins '18
Danetta Jimenez
Kima L. Johnson '19
Mernel E. Johnson '93
Gwendolyn G. Joly '91
Thai Jones
Andee J. Jorisch and Henry Jorisch
Pascale T. Josephson '09
Merel Julia
Sarah E. Juram '91
Jessica Justman and Jack G. Lerner
Richard Justman and Lisa Justman
Khairah H. Kain-Klein '05
Rachel C. Kaplan '03
Paula F. Kaplan '88 and Jack Kaplan
Marjorie Katin-Borland '78
and Bruce Katin-Borland
Sheri L. Katz '78 and Asher Katz
Francine A. Katzman '87 and Robert Schancupp
John Katzman
Terence Keegan
Alyssa K. Keene '14
Charlotte Keister and Andrew Keister
Dorothy M. Kelder '84
Nadine S. Kellogg '85 and Scott H. Kellogg
Rita C. Kelly '82
Kerry E. Kelly '12
Harold D. Kelvin '77 and Renee Kelvin

\$1-\$249 (continued)

Candy Kennedy and Mark Sherman	Benjamin Lenzner '94
Kharissa Kenner	Joan Levine and James A. Levine
Jennifer V. Kessler '96 and Giles V. Powell	Susan M. Levine and Wade Hooker
Reem Khamis-Dakwar and Jamil Dakwar	Emily Levine '98
Swati Khurana and Andres Marquez	Ruth A. Levinson '72
Linda King '93	Barbara H. Levy '72 and Stephen A. Levy
Tewodros Kiros and Celeste Kiros	Jacob I. Levy
Tara Kirton '15	Rebecca Lewin and Morgan Resta-Flarer
Beverly Klau	Stella Liberman '13
Abbie G. Klein '77 and Jonathan Klein	Saralinda B. Lichtblau '03
Judith E. Klein '71	Ira Lieberman
Susan Klein '75 and Laurence Pringle	Judith M. Lieberman '77
Paula Kleinman and Stephen Kleinman	Katie E. Liebling '16
Susan B. Kleinsinger '72	Emily J. Linsay '97 and Jay E. Fung
Lynn C. Kluepfel '94 and Thomas Kluepfel	Danette S. Lipten '94
Daniel Knobler '03 and Carrie Crowell	Ron Liso '86
Taylor M. Koczot '17	Eve A. Litwack '97 and Robert B. Litwack
Ann C. Koermer '73	Qingmin Liu and Renna Wen
Mark I. Koester '94	Lisa B. Lonnegren '94 and Mark Lonnegren
Marie Konstance and Nicolas Bornozis	Rosa E. Lopez
Dennis Kortright '10	Dianne S. Louick '74 and Rainer Bauer
Joanna Kozak and Mariusz Kozak	James D. Lowenthal '78
Jean-Paul Kronenberg '62	Raquel Lucombe '99 and Sherwin Charles
Joan G. Kuchenmeister '79	Marjorie Lune '11
John H. Kuckens '15	Claudia Machaver and Michael Bloome
Tina Kukielski and Josh Weinstein	Susan Macht '73
Susan Kuklin	Morgan Magistro-Capuzzo and Patrick Capuzzo
Judith M. Kulczycki '71 and Anthony Kulczycki	Indira Mahajan and Craig Sirianni
Zenia Kuncio	Christine Mahimainathan '98
Jackson Kytle	Gwen H. Mahoney '85
Zoe Landers and Christopher Therkorn-Landers	Mary R. Major '82
Cari Lang '95	Pratima Malhotra
Kristina Lansbury and David Lansbury	Sarah A. Maller '17
Jennifer Laredo Watkins '83 and Paul Watkins	Rachel E. Maller '10
Joseph Laub and Jessica Borrelli	Bonnie B. Maloney '18
Nancy E. Lauterbach '81 and Larry Lauterbach	Christopher Malynowski and Hyo J. Kang
Hansen Law and Olivia Koentjoro	Sheila G. Mandel '68 and Stanley Mandel
Honey Lazar	Raizella M. Mandel '94
David Lazarus	Muriel Mandell
Ginny Lazarus	Helen Mandlin '78
Richard Q. Lee '96 and Eileen Kapp	Diana Mann and Theodore Mann
Mary Nora Leer	Helen Marble '93
Keith F. Lender and Jill Jorschick	Charlene Marchese '93
David Lenzner '00	Alice Marcus '56

\$1-\$249 (continued)

Janet Mardfin	Lila C. Mortimer '09 and David Mortimer
Nikki Margarites	Brett Moskowitz
Karen Marisak and Gerard Lynch	Michael Mostow
Hannah Mark '06	Jerry Moy
Phyllis J. Marmon '60	Joanne Mrstik '80
James A. Maron '06	Abdullah R. Muhammad '01
Karen S. Martin '94 and Robert Martin	Michelle Mullins and Jaroslaw Petruscak
Christopher Martin '93	Maureen Murphy '83
Cynthia Marvell '80	John Murphy
Marylen T. Massen '10	Jeffrey C. Myers '75
Mary Ann Masterson	Megan Mylan and Michael Chin
Lee M. Matanky '87 and Robert W. Matanky	Cece Nadeau '76
Nicole Mathison and Daniel Aleshinloye	Mark Nagasawa
Lillieth McAlpin and Angela Desoto	Thomas Naiman and Marguerite Holloway
Patricia B. McCallion '78 and Peter McCallion	Myra Najlis and Pierre Najlis
Marnie L. McCarren '97	Mark Narron and Erica Siegel
Caroline P. McClennan '71 and Mort McClennan	Norma Nelson '53
Nyafa McCloggan and Carl McCloggan	Stacy Nelson
Elizabeth A. McCullough '82	Elisabeth L. Nevins '01
Mary B. McDonnell and John McAuliff	Diane Newman
Kim McLeveighn-Helper '00 and David Helper	Joshua Newman '13
Margaret A. McNamara '78	Wynstelle F. Nicholson '94
Chase McNamee	Jessica Niebanck and Paul Niebanck
Hal R. Melnick '74	Wanda Y. Nix '91
Andrew Ment '85 and Nicole Becker	Kathleen M. Nolan-Kasal '05
Lynn Meyers '74 and William Meyers	Vera L. Nordal '52
Daniel Mieszczanski '16	Laura Norwitz '96 and Lawrence Lustig
Christina Milbourne '19	Tenicka T. Norwood '19
Fredrika Miller and Howard Millman	Mayowa Obasaju and Nathan Franco
Cindy Miller	Jessica B. Ohly '06
Lucy Miller and Punit Arora	Judith Oki
Eli Miller '13	Jenny Oldfield and Guy Oldfield
Mariana Miller-D'Alessandro '79	Pamolu Oldham
Amy Minter and Michael Bachrach	Sharon N. Olds
Julia Minutaglio and Mark Minutaglio	Maria Olivieri
Doris L. Mitrani '80	Uzo Ometu and Talibah Ometu
Babette Moeller	Amanda Ospina
Dominique P. Mohansingh	Charles J. Otting '93 and M. Dean-Otting
Virginia Moller	Lynn Oulundsen
Gia R. Moreno '02	Esen S. Ozgener '62
Kirsten Morgan '96	Sophie E. Paci '19
Arthur Morgenroth '76	Nicole Paciello
Lara Morrison and Adam Morrison	Marika Paez '01
Amy C. Morse '02	Marilyn Palarea

\$1-\$249 (continued)

Melissa Palarea and David Arnold	Matthew A. Rifkin '73
Sasha Papernik and Justin Poindexter	Alice L. Rischert
Mary E. Paranac '13	Maria Rivera
Rachelle G. Parker and Nathan Parker	Margaret A. Roberts '05
Judith T. Patel '82 and Laljeebhai Patel	Lyle Robinson '83
Bonnie B. Pauska '12	Lucy Y. Robinson '75 and John A. Robinson
Helene Pavlov and Harvey Zeichner	Simon Rodberg '92
Alexis Penzell '95	Kerry Roeder '20
Laura Pereira and Juan Manuel Schvartzman	Jimena Roesch and Manuel Manyslla
Linda Perkins	Donald Rogers
Virginia F. Perrin '91	Gina Roh and Mark Roh
Challon Perry and Dugeidy Ortiz	Jillian R. Rolen '16
Joyce M. Perry and George H. Perry	Adriana Romanzo '12
Javier Persad	Janice Romley '69 and Arnold Romley
Julia Peterson '71 and Robert H. Peterson	Sophia Roosth and Alma Steingart
Marcia Picciotto '82	Joel Rose
Maxine E. Pincott '04	Lois A. Rose '92
Ellen G. Pincus '80 and Arthur J. Pincus	Alexandra Rosen and Josh Rosen
Troy Pinkney-Ragsdale	Martha D. Rosen
Francesca E. Pisa '06 and Sarah A. Newton '05	Ruth M. Rosenblatt '92
Margaret Piskitel '04	Zachary Rosenblum '03
Pat Pitzer and Jack Pitzer	Esther H. Rosenfeld '84 and Herbert S. Rosenfeld
Barbara T. Plimpton '66	Amy Rosenfeld-Kass '97
Wendy S. Pollock '88	Virginia L. Ross '70
Diana Pondt and Leroy Hunter	Stephen M. Ross and Kara Ross
Carole S. Powell-Henry	Lisa Rothman and Jeannie Chung
Elizabeth Prelinger	Diana Rothman '71
Clara Presler and Andrew Fink	Karen Rothschild '79 and Benjamin Rothschild
John S. Price, Jr. [†]	Thomas J. Rowe
Cordell F. Price '76	Robin Rowley '16
Alexa Price-Whelan and Lars Dietrich	Benjamin Rubenstein '19
Heather Price-Wright	Mollyann Rubin '82
Princess Prince-McCoade and Timothy McCoade	Glenita Rubin-Shelton
Aimee Promislow	Lena Rumfelt and Chad Rumfelt
Mary Putman	Linda M. Russo '94 and Thomas J. Russo
Seth Rader and Denisse Andrader	Shereen L. Rutman '86
Fiona J. Ragheb and Christopher Scoates	Christopher Ryan and Lauren Picker
Raud Rahmanian	Lillian M. Ryan '77 and Douglas F. Ryan
Mia N. Ramirez '94	Margaret Ryan '01 and Steven Evangelista '01
Isabel Ramirez-Inniss and Wayne Inniss	Michele Ryan '94
Jason R. Rawlins and Rebecca N. Rawlins	Mary A. Sacco '94
Anna C. Rekate '99	Daniele F. Sahr '18
George Renaudin	Lily Saint and David Freedlander
Rena N. Rice '77 and Sheldon M. Rice	Dawn E. Salerno '05

\$1-\$249 (continued)

Deborah Salzer '70 and Clarence Salzer
Ronnie Sampson '77
Marilyn Sanders
Sandeep Sankarankutty and Margarita Krupkina
Melissa J. Sann '97
Dejá Santiago '22
Sarah W. Sapp '82 and Freddie Sapp
Jennifer Sarantos
Betsy A. Sason '98
Elizabeth T. Sawyer '93 and James Sawyer
Alice Nanyonga Schane and Tristan Schane
Letta Schatz '48
Ann Schaumburger
Carla Scheele and Harold Augenbraum
Caroline A. Schill and Marcel Botha
Marta G. Schmidt '77
Julia Sonnevend and Michael Schudson
Sue W. Schulman '60
Erin L. Schultz '14
Max Schultz-Reid '04
Lisa Schwartzburg '94
Elizabeth C. Segal '91
Ahud B. Sela '03
Shayla Sellars
Eve S. Selver-Kassell '10 and Jason Mears
Charissa Sgouros '02
Steven Shaffer '80
Tejas Shah and Niketa Sheth
Erica S. Shatz-Spry and Roger Spry
Nina Sher '82 and Aaron E. Sher
Bina D. Shevin '84 and Jonathan Shevin '86
Linda B. Shuffman '17
Shera Silver
Nancy Sing-Bock '95
Dale Singer and Gary J. Carriero
Niki Singh
Kaveri Singh and Sameer Kumar
Maya Sissoko
Lisa Skelton '90
Harris Skibell
Sara Skluzacek and Johnny Heyward
Nicoletta Skoufalos-Sazaklis and John Sazaklis
Emily Slotkin and Matthew Slotkin
DeAnna Smallwood '22

Mary C. Smith '71 and Wallace B. Smith
Sally A. Smith '72
Piper L. Smith '98
Kelly Smith
Roslyn A. Smith '04
Tracy Snyder and Jose Pelaez
Emily Sobel
Abraham D. Sofaer and Marian Sofaer
Natalia Y. Sokolova '08
Edward Solecki '09
Cristian R. Solorza '02 and Orlando Solorza
Sora Song and Noah Bray
Lee Spencer
Tracy Spesis
Justin Spewock
Jane Spinak and Warren Scharf
Leanne V. Spitalieri '09
Marshall A. Spooner '11
Aditya Sreenivasan and Janhavi Purohit
Clare D. St. Catherine '08
Kathleen Stephens and Jim Stephens
Barbara M. Stern '80
Barbara L. Stern '03
Betty P. Steuer '72
Matthew Stine '94 and Elizabeth H. Weinberg
Jennifer Stine '01
Susan E. Stires and Kinne Stires
Charlotte L. Stiverson '85
Anne C. Stokes '77 and R. L. Stokes
Phyllis B. Stone '95 and Glenn H. Davis '04
Barbara U. Streeter '77
Judith C. Stubbs '73
Patricia Sublett and Jeffrey Sublett
Sujatha Subramanian and Reuben Sinha
Robert Sugarman
Sally Sugarman[†] '57
Pearl Sun and Johannes Rittershausen
Elizabeth K. Sweeney '00
Elizabeth S. Takesono '70 and Jerald S. Takesono
Hadassah Tannor
Michele B. Taubenblat '97
Maggie Tauranac and Evan Bardot
Cheryl Tetenbaum '70 and Elliot Tetenbaum
Colette Thayer '83

\$1-\$249 (continued)

Rachel Theilheimer '74 and Jonathan D. Beard
Trinidell Thomas '96
Colleen Thomas Young and William Young
Mary E. Thompson
Mary Jane Thompson
Dr. Jane Thorbeck '74
Annie Thorkelson and Jason Brown
Kim T. Thurman '95
Margaret Tice
Theodore A. Timpson '05 and Julia Timpson
Amber Tingle and Jarrid Tingle
Ramey W. Tomson '75
Grace A. Toolan '17
Diane Tortu '99
Lena Townsend
Carol B. Traynor '91
Bethene Trexel '75 and Jonathan H. Tenney
Leslie Trinidad and Pablo Trinidad
Karen Trombly '79 and Paul Trombly
Betsy Tsai
Vaia Tsolas and Michael Civin
Morika Tsujimura
Helena Tyson and John Tyson
Paula K. Ulrich
Maria Vallejo-Nguyen and Quyen Nguyen
Alex Van Clief and Jonathan Eger
Heather Van der Grinten '18
Penny Venetis and Richard Kassel
Elizabeth G. Vershay '91
James V. Vigliotti '94
Leslie Wagner
Rahsaan T. Wareham '93 and Julee Wareham
Barbara Warren
Abbyann Wasilew '70
Jason N. Watt '99 and Sandra Ramos-Watt
Cindy Weill
Toby A. Weinberger and Harold P. Weinberger
Michele Weisman
Laurie A. Weisman '87
Robert Weiss and Deborah Conrad
Sheila Weiss

Zoey Welch '03
Marcia S. Weller '73 and Herbert Weller
Jeremy Wells and Suheyla Zubaroglu
Dr. Donald A. Wells
Kristin F. Wells and Brent Wells
Cynthia S. Weniger '03 and Lee Krugman
Lucy West '88
Rebecca J. Wharton and Elliot L. Jurist
Carolyn White-Lesieur '75
Emma B. Whitman '07
Edith Wiener '91 and Martin Wiener
Amelia Wiggins '13
Cathleen Harvey Wiggins '92
and Ernest W. Wiggins
Marilyn Wiles-Kettenmann '02
Robbie R. Williams '82
Gloria Williams Ladd '73 and Lincoln F. Ladd
Mary Ann Wilson and Joe Wilson
Lisa M. Wiltshire '08
Lauren Wimbush '03
Jennifer J. Wittmer '94
Barbara Wolf
Mary Wolpert
Anton Wong '71
Valerie Wood and Roger Wood
Pamela S. Wood '92 and Bruce A. Wood
Hudson Wright
Claire Wurtzel '77 and William Wurtzel
Molly P. Wyatt '13
Lei Xu
Ayame Yamamoto and Yuho Yamamoto
Masayuki Yazawa and Jue Feng
Eleanor E. Yee '18
Amy E. B. Zahalsky '99
Sarah L. Zalcmann '07
Samuel Zarn '00 and Laura Zarn
Edda E. Zavala-Agosto '94
Carol Zeavin '02
Ellen R. Ziman '82
Barry Zucker and Veronica Bertran
Hillary Zuckerberg and Tom Saputo

FOUNDATIONS/INSTITUTIONAL PARTNERS

AJH-BEH Trust “Survivor’s Trust”	Jewish Communal Fund
Amalgamated Charitable Foundation , The Play it Forward Fund	Jim Neuberger and Helen Stambler Neuberger Foundation
America’s Charities	JLL
American Endowment Foundation	J.P. Morgan Charitable Giving Fund
Anna-Maria and Stephen Kellen Foundation	Kinloch Consulting Group Inc.
Arnold & Jeanne Bernstein Fund	Knafel Family Foundation
Arthur C. Nielsen Jr. Family CharitableTrust	Kriss & Feurstein LLP
AXA Foundation	LCU Fund for Women’s Education
Ayco Charitable Foundation	Lee & Associates
Bank of America Charitable Gift Fund	Leo Model Foundation Inc.
Becton Family Foundation	Leventhal Family Charitable Foundation
Benevity Community Impact Fund	MAL/BDL Charitable Foundation
Bessemer Trust	Margaret A. Cargill Philanthropies
Beyer Blinder Belle, Architects and Planners, LLP	MARSH USA Inc.
Bloomberg Philanthropies	MarshMcClennan Agency
Boys & Girls Clubs of America	Meltzer, Lippe, Goldstein, & Breitstone, LLP
Brown, Brothers, Harriman & Co.	Meteor Learning
Carnegie Corporation of New York	Michael Rosenfeld Gallery LLC
Chan Zuckerberg Initiative	Mitchell Kapur Foundation
Charities Aid Foundation of America	Morgan Stanley & Co. Inc.
Charles Keene / Mills College Trust	MSB Charitable Fund
Cleveland H. Dodge Foundation	Museum Partners Consulting LLC
Colliers	National Association for Family, School, and Community Engagement
Community Foundation of Sonoma County	National Philanthropic Trust
Con Edison Company	Network for Good
Corcoran Sunshine Marketing Group	Newmark Knight Frank
Creative Learning Center	Newsela
Cushman & Wakefield	Noggin
Ehrenkranz Partners	O’Toole Family Foundation
Fidelity Charitable Gift Fund	Open Society Foundations
Fidelity National Title Insurance Services LLC	Patrick Jenkins & Associates
First American Title Insurance Company	Reach Capital
Florence V. Burden Foundation	Renaissance Charitable Foundation
Foundation For Child Development	Rexford Fund Inc.
Foundation@ Cross River	Richard & Iris Abrons Foundation
Fried, Frank, Harris, Shriver, & Jacobson LLP	Robert Wood Johnson Foundation
Global Strategy Group	Salesforce
Goldman Sachs Gives	Samuel H. Kress Foundation
Gray Foundation	Schwab Charitable Gift Fund
Gullah Heritage Consulting Services LLC	Shippy Foundation
Harmon Family Foundation	Solis-Cohen Spigel Family Foundation
Harry Frank Guggenheim Foundation	Square Mile Capital
J.P. Morgan Chase Foundation	

FOUNDATIONS/INSTITUTIONAL PARTNERS (continued)

Starr Associates LLP	The Grodzins Fund
Stroock & Stroock & Lavan LLP	The Kandell Fund
Stuart Four Square Foundation	The Lerer Family Charitable Foundation Inc.
Taconic Investment Partners LLC	The Matchett Family Trust
TCV	The Melissa and Scott Beattie Family Foundation
Tension Envelope Foundation	The Michael and Joni-Sue Levine Family Fund
The Alliance for Early Success	The Moses Feldman Family Foundation
The Altschul Foundation	The New York Community Trust
The Bill & Melinda Gates Foundation	The Pinkerton Foundation
The Blackbaud Giving Fund by YourCause	The Rocking Chair Foundation
The Charles Hayden Foundation	The U.S. Charitable Gift Trust
The Dammann Fund Inc.	The Walsh Street Foundation
The F. & E. Stamer Foundation	TIAA
The First Presbyterian Church in the City of New York	Vanguard Charitable
The Glickenhau Foundation	W. Clement and Jessie V. Stone Foundation
The Gloria and Hilliard Farber Foundation	West Harlem Development Corporation
	Your Choice Brands LLC

WAYS TO GIVE

Every gift, no matter the size, makes a huge impact. If you're considering making a gift, here's how.

ONE-TIME GIFT

To make a one-time gift, please visit us online at bankstreet.edu/support-us, call our office at **212-961-3329**, or email giving@bankstreet.edu, or mail a check (payable to Bank Street College of Education): Development and Alumni Relations, Bank Street College of Education, P.O. Box 250865, New York, NY 10125-0047.

RECURRING GIFT

Visit give.bankstreet.edu/BSEA to become a Bank Street Educational Advocate monthly donor. Giving on a monthly basis is easy and allows for the sustained, consistent funding that Bank Street relies on to continue offering an innovative and experience-based education.

MATCHING GIFT FROM YOUR COMPANY OR FOUNDATION

Visit bankstreet.edu/support-us/ways-to-give/match-your-gift to search our database and find out if your company will match your gift.

GIFT OF STOCK OR SECURITIES

Make a gift of appreciated securities using the information below. Please note that our broker does not receive donor information; to be properly acknowledged, we'll need to know how many shares of which stock you transferred. Please contact our office at **212-961-3329** or email giving@bankstreet.edu.

Broker-Dealer Name: NFS

DTC#: 0226

100 Crosby Parkway KC1J, Covington, KY 41015

Account Name – Number: Bank Street College of Education – 636374252

DONOR-ADVISED FUNDS (DAF) DONATION

If you'd like to make a grant from a donor-advised fund account at Fidelity, Schwab, Vanguard, or another institute or sponsor, you can place a request to our Federal Tax ID #13-5562167. For assistance, please email us at giving@bankstreet.edu.

QUALIFIED CHARITABLE DISTRIBUTIONS FROM YOUR IRA

To make a gift from your IRA, please contact your IRA administrator to request a funds transfer. To help us credit your gift, please ask your IRA administrator to make the check payable to Bank Street College of Education and include your full name and mailing address on the check. Also, have your administrator note that the transfer is an IRA Qualified Charitable Distribution.

Mail to: Development and Alumni Relations, Bank Street College of Education, P.O. Box 250865, New York, NY 10125-0047

Thank you for your support of Bank Street! We could not do the work we do without you.

Bank Street College of Education Federal Tax ID # 13-5562167



