



# Palmetto

BY LENNAR

Coastal themed living, this model is an outstanding use of 2,444 square feet of living space, 3 bedrooms including expansive master suite, 3 full baths, large open kitchen boasts inviting eat-in dining room, the great room serves as the entertainment hub of the home, the covered patio great for enjoying the cool Florida Winters and growing herbs and pretty potted plants. The 3-car garage is for pampering cars plus lots of storage.

## Contact

(941) 200-6437

42850 Crescent Loop, Babcock Ranch, FL 33982

[contact@babcockranch.com](mailto:contact@babcockranch.com)

## Specifications

Base Price \$288,999

2,444 S.F.

3 Bedrooms

3 Bathrooms

Trail's Edge Neighborhood

Single-Family

Built by Lennar

## Home Status

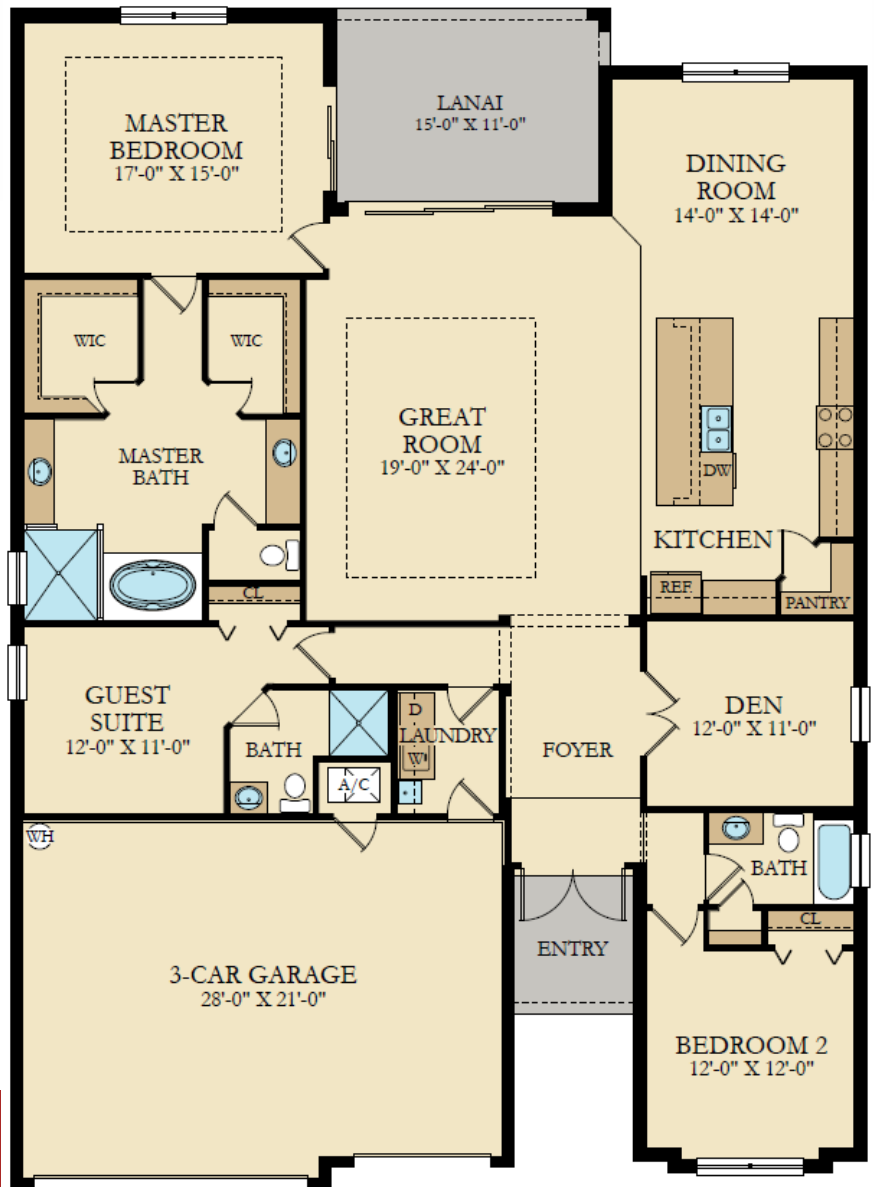
Designer Furnished

Dream Ready

Home Design



All information is deemed reliable, but is not guaranteed. All prices, dimensions and specifications are subject to change without notice. The master developer reserves the right, in its sole and absolute discretion, to modify plans for the development described or depicted herein at any time without notice. No guarantees or representations whatsoever are made that the features, amenities and facilities, and existing or future views of the project and surrounding areas depicted or otherwise described herein, will be provided, or, if provided, will be of the same type, size, location or nature as depicted or described herein. All rights reserved © 2018 Kitson & Partners and its affiliates.



**Palmetto Home Design**  
Area Summary

Floor Plan	
Living A/C	2,444 S.F.
Entry	59 S.F.
Garage	620 S.F.
Outdoor Living	176 S.F.
<u>Total A/C</u>	<u>2,444 S.F.</u>
Grand Total	3,299 S.F.



All information is deemed reliable, but is not guaranteed. All prices, dimensions and specifications are subject to change without notice. The master developer reserves the right, in its sole and absolute discretion, to modify plans for the development described or depicted herein at any time without notice. No guarantees or representations whatsoever are made that the features, amenities and facilities, and existing or future views of the project and surrounding areas depicted or otherwise described herein, will be provided, or, if provided, will be of the same type, size, location or nature as depicted or described herein. All rights reserved © 2018 Kitson & Partners and its affiliates.