

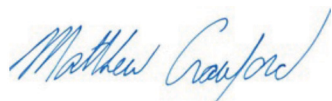
ParkOhio



2024 Annual Report

To Our Fellow Shareholders:

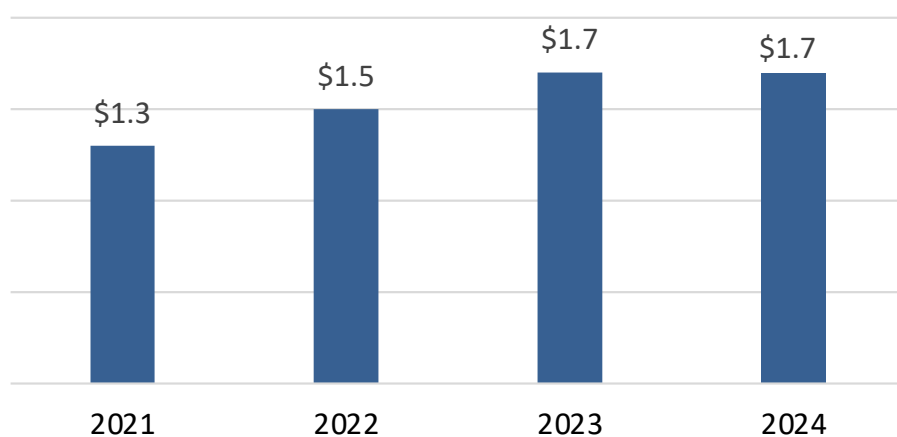
We concluded 2024 by continuing to demonstrate improved metrics around margin, cash flow and leverage even in a more moderate growth environment. Having spent the last several years reshaping our business portfolio, we believe we enter 2025 with a faster growing, more profitable, less capital intensive and more predictable business model through the business cycle.



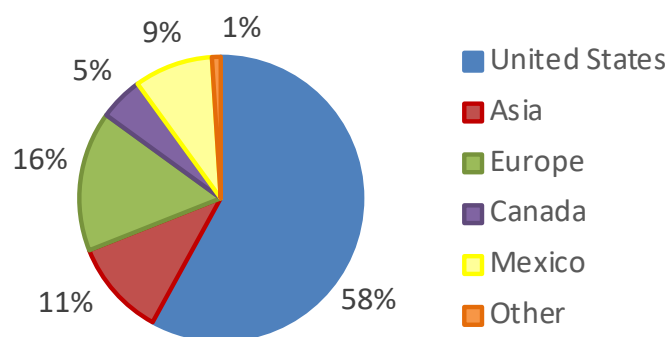
Matthew V. Crawford

Chairman, Chief Executive Officer and President

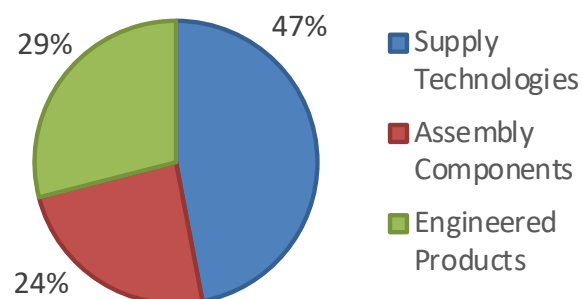
Net Sales from Continuing Operations (in billions)



Ship to Sales by Geographic Region



Sales by Business Segment



Several Channels to Create Meaningful Value



- ✓ A Strong and Invested Leadership Team**
 - 125+ combined years of industry experience and tenure at PKOH
 - Pivoting towards execution with new leadership talent at the segment level
- ✓ Well Diversified Portfolio of Premier Customers**
 - 25+ industries served
 - Supported by a global footprint of approximately 130 facilities
- ✓ Self-Help Benefits Expected to Drive Margin Improvement**
 - Recent and ongoing footprint optimization and operational improvement actions
- ✓ Significant Secular and Company Specific Growth Opportunities**
 - Exposure to long-term growth trends such as electrification, renewable energy, light-weighting, aerospace & defense, and incremental infrastructure spend
 - Company specific growth stemming from aftermarket spend across an aging asset base, capacity additions, as well as product innovation and expansion
- ✓ Long History of Successful M&A Discipline Remains Ongoing**
 - Over twenty acquisitions since 2010
 - Many of the industrial markets PKOH competes in are fragmented, which creates opportunities for buying smaller niche companies that enhance market share growth and profitability

A Purpose-driven Company Aiming To Win

For over **100 years**, ParkOhio has combined an entrepreneurial culture and a commitment to excellence to support our customers in helping people around the world increase their quality of life. We deliver on this mission through three business segments which provide industry leading products and services

Our Core Values

Decentralization & Entrepreneurship

Providing the responsibility and authority to make decisions at the greatest point of impact throughout our organization

Bettering Our Communities

We believe in providing employees a safe working environment and empowering them to make a positive impact in their community

Getting Better Every Day

We strive for continuous improvement in our operations across the organization

Compete to Win

We expect to succeed in growing our sales, profitability, and continue to be leaders in the markets we serve while maintaining respect of our partners and competitors

[THIS PAGE INTENTIONALLY LEFT BLANK]



2024 FORM 10-K

[THIS PAGE INTENTIONALLY LEFT BLANK]

UNITED STATES
SECURITIES AND EXCHANGE COMMISSION
Washington, D.C. 20549
FORM 10-K

(Mark One)

☒ **ANNUAL REPORT PURSUANT TO SECTION 13 OR 15(d) OF THE SECURITIES EXCHANGE ACT OF 1934**

For the fiscal year ended December 31, 2024

OR

☐ **TRANSITION REPORT PURSUANT TO SECTION 13 OR 15(d) OF THE SECURITIES EXCHANGE ACT OF 1934**

For the transition period from _____ to _____

Commission file number: 000-03134

PARK-OHIO HOLDINGS CORP.

(Exact name of registrant as specified in its charter)

Ohio

34-1867219

(State or other jurisdiction of incorporation or organization)

(I.R.S. Employer Identification No.)

6065 Parkland Boulevard, Cleveland, Ohio

44124

(Address of principal executive offices)

(Zip Code)

Registrant's telephone number, including area code (440) 947-2000

Securities registered pursuant to Section 12(b) of the Act:

Title of each class	Trading Symbol(s)	Name of each exchange on which registered
Common Stock, Par Value \$1.00 Per Share	PKOH	The NASDAQ Stock Market LLC

Securities registered pursuant to Section 12(g) of the Act:

None

Park-Ohio Holdings Corp. is a successor issuer to Park-Ohio Industries, Inc.

Indicate by check mark if the registrant is a well-known seasoned issuer, as defined in Rule 405 of the Securities Act. Yes ☐ No ☒

Indicate by check mark if the registrant is not required to file reports pursuant to Section 13 or Section 15(d) of the Act. Yes ☐ No ☒

Indicate by check mark whether the registrant: (1) has filed all reports required to be filed by Section 13 or 15(d) of the Securities Exchange Act of 1934 during the preceding 12 months (or for such shorter period that the registrant was required to file such reports), and (2) has been subject to such filing requirements for the past 90 days. Yes ☒ No ☐

Indicate by check mark whether the registrant has submitted electronically every Interactive Data File required to be submitted pursuant to Rule 405 of Regulation S-T (§232.405 of this chapter) during the preceding 12 months (or for such shorter period that the registrant was required to submit such files). Yes ☒ No ☐

Indicate by check mark whether the registrant is a large accelerated filer, an accelerated filer, a non-accelerated filer, a smaller reporting company, or emerging growth company. See the definitions of "large accelerated filer," "accelerated filer," "smaller reporting company," and "emerging growth company" in Rule 12b-2 of the Exchange Act.

Large accelerated filer	<input type="checkbox"/>	Accelerated filer	<input checked="" type="checkbox"/>
Non-accelerated filer	<input type="checkbox"/>	Smaller reporting company	<input type="checkbox"/>
		Emerging growth company	<input type="checkbox"/>

If an emerging growth company, indicate by check mark if the registrant has elected not to use the extended transition period for complying with any new or revised financial accounting standards provided pursuant to Section 13(a) of the Exchange Act. ☐

Indicate by checkmark whether the registrant has filed a report on and attestation to its management's assessment of the effectiveness of its internal control over financial reporting under Section 404(b) of the Sarbanes-Oxley Act (15 U.S.C 7262(b)) by the registered public accounting firm that prepared or issued its audit report. ☒

If securities are registered pursuant to Section 12(b) of the Act, indicate by check mark whether the financial statements of the registrant included in the filing reflect the correction of an error to previously issued financial statements. ☐

Indicate by checkmark whether any of those error corrections are restatements that required a recovery analysis of incentive-based compensation received by any of the registrant's executive officers during the relevant recovery period pursuant to §240.10D-1(b). ☐

Indicate by check mark whether the registrant is a shell company (as defined in Rule 12b-2 of the Exchange Act). Yes ☐ No ☒

Aggregate market value of the registrant's Common Stock held by non-affiliates of the registrant: Approximately \$365,032,223 based on the closing price of \$25.89 per share of the registrant's Common Stock on June 28, 2024.

Number of shares outstanding of registrant's Common Stock, par value \$1.00 per share, as of February 28, 2025: 14,230,992.

DOCUMENTS INCORPORATED BY REFERENCE

Portions of the registrant's definitive proxy statement for the Annual Meeting of Shareholders to be held on or about May 15, 2025 are incorporated by reference into Part III of this Annual Report on Form 10-K.

PARK-OHIO HOLDINGS CORP.
FORM 10-K ANNUAL REPORT
FOR THE FISCAL YEAR ENDED DECEMBER 31, 2024

TABLE OF CONTENTS

<u>Item No.</u>		<u>Page</u>
PART I.		
1.	Business	1
1A.	Risk Factors	6
1B.	Unresolved Staff Comments	12
1C.	Cybersecurity	12
2.	Properties	13
3.	Legal Proceedings	14
4.	Mine Safety Disclosures	15
PART II.		
5.	Market for the Registrant's Common Equity, Related Stockholder Matters and Issuer Purchases of Equity Securities	15
6.	[Reserved]	15
7.	Management's Discussion and Analysis of Financial Condition and Results of Operations	15
7A.	Quantitative and Qualitative Disclosures About Market Risk	25
8.	Financial Statements and Supplementary Data	26
9.	Changes in and Disagreements With Accountants on Accounting and Financial Disclosure	55
9A.	Controls and Procedures	56
9B.	Other Information	56
9C.	Disclosure Regarding Foreign Jurisdictions that Prevent Inspection	56
PART III		
10.	Directors, Executive Officers and Corporate Governance	57
11.	Executive Compensation	57
12.	Security Ownership of Certain Beneficial Owners and Management and Related Stockholder Matters	57
13.	Certain Relationships and Related Transactions, and Director Independence	57
14.	Principal Accountant Fees and Services	57
PART IV.		
15.	Exhibits and Financial Statement Schedules	58
16.	Form 10-K Summary	61
	Signatures	62

PART I

Item 1. *Business*

Overview

Park-Ohio Holdings Corp. (“Holdings” or “ParkOhio”), incorporated in Ohio since 1998, is a diversified international company providing world-class customers with a supply chain management outsourcing service, capital equipment used on their production lines, and manufactured components used to assemble their products.

References herein to “we” or “the Company” include, where applicable, Holdings and Park-Ohio Industries, Inc. and Holdings’ other direct and indirect subsidiaries.

The Company operates through three reportable segments: Supply Technologies, Assembly Components and Engineered Products. As of December 31, 2024, we employed approximately 6,300 people.

On December 29, 2023, the Company completed the sale to Angstrom Automotive Group of its Aluminum Products business, which has been classified as a discontinued operation for all periods presented.

The following table summarizes the key attributes of each of our business segments:

	Supply Technologies	Assembly Components	Engineered Products
NET SALES FOR 2024	\$775.8 million	\$398.7 million	\$481.7 million
SELECTED PRODUCTS	Sourcing, planning and procurement of over 280,000 production components, including: <ul style="list-style-type: none"> • Fasteners • Pins • Valves • Hoses • Wire harnesses • Clamps and fittings • Rubber and plastic components • Other Class C and MRO products 	<ul style="list-style-type: none"> • Fuel rails • Fuel filler assemblies • Extruded rubber and plastics • Molded rubber and plastics 	<ul style="list-style-type: none"> • Induction heating and melting systems • Pipe threading systems • Industrial oven systems • Forging presses • Forged steel and machined products
SELECTED INDUSTRIES SERVED	<ul style="list-style-type: none"> • Heavy-duty truck • Power sports and recreational equipment • Aerospace and defense • Semiconductor equipment • Electrical distribution and controls • Consumer electronics • Bus and coaches • Automotive • Agricultural and construction equipment • HVAC • Lawn and garden • Plumbing • Medical devices 	<ul style="list-style-type: none"> • Automotive and light vehicle • Agricultural equipment • Construction equipment • Heavy-duty truck • Bus 	<ul style="list-style-type: none"> • Ferrous and non-ferrous metals • Coatings • Forging • Foundry • Heavy-duty truck • Construction equipment • Automotive • Oil and gas • Rail • Aerospace and defense • Power generation

The Company consists of the following segments:

Supply Technologies

Our Supply Technologies business provides our customers with Total Supply Management™, a proactive solutions approach that manages the efficiencies of every aspect of supplying production parts and materials to our customers' manufacturing floor, from strategic planning to program implementation. Total Supply Management™ includes engineering and design support, part usage and cost analysis, supplier selection, quality assurance, bar coding, product packaging and tracking, just-in-time and point-of-use delivery, electronic billing services and ongoing technical support. We operate approximately 80 logistics service centers in the United States, Mexico, Canada, Czech Republic, Puerto Rico, Scotland, Hungary, China, Taiwan, Singapore, India, England, France, Spain, Poland, Wales, Northern Ireland and Ireland, including production sourcing and support centers in the United States and Asia. Through our supply chain management programs, we supply more than 280,000 globally-sourced production components, many of which are specialized and customized to meet individual customers' needs.

Total Supply Management™ provides our customers with an expert partner in strategic planning, global sourcing, technical services, parts and materials, logistics, distribution and inventory management of production components. Some production components are characterized by low per unit supplier prices relative to the indirect costs of supplier management, quality assurance, inventory management and delivery to the production line. In addition, Supply Technologies delivers an increasingly broad range of higher-value production components including valves, fuel hose assemblies, electro-mechanical hardware, labels, fittings, steering components and many others. Applications engineering specialists and the direct sales force work closely with the engineering staff of OEM customers to recommend the appropriate production components for a new product or to suggest alternative components that reduce overall production costs, streamline assembly or enhance the appearance or performance of the end product. Supply Technologies also provides spare parts and aftermarket products to end users of its customers' products.

Total Supply Management™ is typically provided to customers pursuant to sole-source arrangements. We believe our approach distinguishes us from traditional buy/sell distributors, as well as manufacturers who supply products directly to customers, because we provide the supply chain management of our customers' high-volume production components. We administer the processes customized to each customer's needs by replacing numerous current suppliers with a sole-source relationship with Supply Technologies. Our highly-developed, customized information systems provide global transparency and flexibility through the complete supply chain. This enables our customers to: (1) significantly reduce the direct and indirect cost of production component processes by outsourcing internal purchasing, quality assurance and inventory fulfillment responsibilities; (2) reduce the amount of working capital invested in inventory and floor space; (3) reduce component costs through purchasing efficiencies, including bulk buying and supplier consolidation; and (4) receive technical expertise in production component selection, design and engineering. Our sole-source arrangements foster long-term, entrenched supply relationships with our customers and, as a result, the average tenure of service for our top 50 Supply Technologies clients exceeds ten years. Supply Technologies also supplies wholesale industrial products to other manufacturers and distributors pursuant to master or authorized distributor relationships.

The Supply Technologies segment also engineers and manufactures precision cold-formed and cold-extruded fasteners and other products, including locknuts, SPAC® nuts, SPAC® bolts and wheel hardware, which are principally used in applications where controlled tightening is required due to high vibration. Supply Technologies produces both standard items and specialty products to customer specifications, which are used in large volumes by customers in the automotive, heavy-duty truck and aerospace industries.

Markets and Customers. For the year ended December 31, 2024, approximately 57% of Supply Technologies' net sales were to domestic customers. Remaining sales were primarily to manufacturing facilities of large, multinational customers located in Europe, Mexico, Asia and Canada. Total Supply Management™ is used extensively in a variety of industries, and demand is generally related to the state of the economy and to the overall level of manufacturing activity.

Supply Technologies markets and sells to over 7,500 customers domestically and internationally. The five largest customers, to which Supply Technologies sells through sole-source contracts to multiple operating divisions or locations, accounted for approximately 34% and 36% of the sales of Supply Technologies in 2024 and 2023, respectively. The loss of any two or more of its top five customers could have a material adverse effect on the results of operations and financial condition of this segment.

Competition. A limited number of companies compete with Supply Technologies to provide supply management services for production parts and materials. Supply Technologies competes primarily on the basis of its Total Supply Management™ approach, including engineering and design support, part usage and cost analysis, supplier selection, quality assurance, bar coding, product packaging and tracking, just-in-time and point-of-use delivery, electronic billing services and ongoing technical support, and its geographic reach, extensive product selection, price and reputation for high service levels. Numerous U.S. and foreign companies compete with Supply Technologies in manufacturing cold-formed and cold-extruded products.

Assembly Components

Assembly Components manufactures products oriented towards fuel efficiency, reduced emissions and vehicle electrification. Assembly Components designs, develops and manufactures: highly efficient, high pressure direct fuel injection fuel rails and pipes; fuel filler pipes that route fuel from the gas cap to the gas tank; and flexible multi-layer plastic and rubber assemblies used to transport fuel from the vehicle's gas tank and then, at extreme high pressure, to the engine's fuel injector nozzles. These advanced products, coupled with Turbo Enabled engines, make up large and growing engine architecture for all worldwide car manufacturers. Assembly Components also designs and manufactures Turbo Charging hoses along with Turbo Coolant hoses that will be required as engines get downsized to 3 or 4 cylinders from 6 or 8 cylinders. This engine downsizing increases efficiency, while dramatically decreasing pollution levels.

Assembly Components operates 11 manufacturing facilities and three technical offices in the United States, Mexico, China, the United Kingdom and the Czech Republic. In addition, we also provide value-added services such as design engineering, machining and parts assembly.

Markets and Customers. For the year ended December 31, 2024, approximately 66% of Assembly Components' net sales were to domestic customers. The five largest customers of Assembly Components accounted for approximately 55% and 57% of segment sales for 2024 and 2023, respectively. These sales, across multiple operating divisions, are through sole-source contracts. The loss of any one of these customers could have a material adverse effect on the results of operations and financial condition of this segment.

Competition. Assembly Components competes principally on the basis of its ability to: (1) engineer and manufacture high-quality, cost-effective assemblies utilizing multiple technologies in large volumes; (2) provide timely delivery; and (3) retain the manufacturing flexibility necessary to quickly adjust to the needs of its customers. There are few domestic companies with the capabilities to meet customers' stringent quality and service standards and lean manufacturing techniques. As one of these suppliers, Assembly Components is well-positioned to benefit as customers continue to consolidate their supplier base.

Engineered Products

Our Engineered Products segment operates a diverse group of niche manufacturing businesses that design and manufacture a broad range of highly engineered products, including induction heating and melting systems, pipe threading systems and forged and machined products. We manufacture these products in 13 domestic facilities throughout the United States and 19 international facilities in Canada, Mexico, the United Kingdom, Belgium, Germany, China, Italy, India, Japan, Spain, France and Brazil.

Our induction heating and melting business utilizes proprietary technology and specializes in the engineering, construction, service and repair of induction heating and melting systems, primarily for the ferrous and non-ferrous metals, silicon, coatings, forging, foundry, automotive and construction equipment industries. Our induction heating and melting systems are engineered and built to customer specifications and are used primarily for melting, heating, and surface hardening of metals and curing of coatings. Approximately 48% of our induction heating and melting systems' revenues are derived from the sale of replacement parts and provision of field service, primarily for the installed base of our own products. Our pipe threading business serves the oil and gas industry. We also engineer and install mechanical forging presses, sell spare parts and provide field service for the large existing base of mechanical forging presses and hammers in North America. We machine, induction harden and surface finish crankshafts and camshafts, used primarily in locomotives. We forge aerospace and defense structural components such as landing gears and struts, as well as rail products such as railcar center plates and draft lugs.

Markets and Customers. For the year ended December 31, 2024, approximately 54% of Engineered Products' net sales were to domestic customers. We sell induction heating and other capital equipment to component manufacturers and OEMs in the ferrous and non-ferrous metals, silicon, coatings, forging, foundry, automotive, truck, construction equipment and oil and gas industries. We sell forged and machined products to locomotive manufacturers, machining companies and sub-assemblers who finish aerospace and defense products for OEMs, and railcar builders and maintenance providers.

Competition. We compete with small-to medium-sized domestic and international equipment manufacturers on the basis of service capability, ability to meet customer specifications, delivery performance and engineering expertise. We compete domestically and internationally with small-to medium-sized forging and machining businesses on the basis of product quality and precision.

Sales and Marketing

Supply Technologies markets its products and services in the United States, Mexico, Canada, Europe and Asia primarily through its direct sales force, which is assisted by applications engineers who provide the technical expertise necessary to assist the engineering staff of OEM customers in designing new products and improving existing products. Assembly Components primarily markets and sells its products in North America through internal sales personnel and independent sales representatives. Engineered Products primarily markets and sells its products in North America through both internal sales personnel and independent sales representatives. Induction

heating and pipe threading equipment is also marketed and sold in Europe, Asia, Latin America and Africa through both internal sales personnel and independent sales representatives. In some instances, the internal engineering staff assists in the sales and marketing effort through joint design and applications-engineering efforts with major customers.

Raw Materials and Suppliers

Supply Technologies purchases substantially all of its production components from third-party suppliers. Supply Technologies has multiple sources of supply for its components. An increasing portion of Supply Technologies' production components are purchased from suppliers in foreign countries, primarily Canada, Taiwan, China, South Korea, Singapore, India and multiple European countries. Supply Technologies is dependent upon the ability of such suppliers to meet stringent quality and performance standards and to conform to delivery schedules. Assembly Components and Engineered Products purchase substantially all of their raw materials, principally certain component parts incorporated into their products, from third-party suppliers and manufacturers. Most raw materials required by Assembly Components and Engineered Products are commodity products available from several domestic suppliers. Management believes that raw materials and component parts other than certain specialty products are available from alternative sources.

Our suppliers of raw materials and component parts may significantly and quickly increase their prices in response to increases in the cost of the raw materials, such as steel, that they use to manufacture our raw materials and component parts. While we generally attempt to pass along increased raw material prices to our customers in the form of price increases, there may be a time delay between the increased raw material prices and our ability to increase the price of our products, or we may be unable to increase the prices of our products due to various factors. See the discussion of risks associated with raw material supply and costs in Item 1A "Risk Factors".

Compliance with Government Regulations

We are subject to numerous federal, state and local laws and regulations designed to protect public health and the environment, particularly with regard to discharges and emissions, as well as handling, storage, treatment and disposal of various substances and wastes. Failure to comply with applicable environmental laws and regulations and permit requirements could result in civil and criminal fines or penalties or enforcement actions, including regulatory or judicial orders enjoining or curtailing operations or requiring corrective measures. Pursuant to certain environmental laws, owners or operators of facilities may be liable for the costs of response or other corrective actions for contamination identified at or emanating from current or former locations, without regard to whether the owner or operator knew of, or was responsible for, the presence of any such contamination, and for related damages to natural resources. Additionally, persons who arrange for the disposal or treatment of hazardous substances or materials may be liable for costs of response at sites where they are located, whether or not the site is owned or operated by such person.

From time to time, we have incurred, and are presently incurring, costs and obligations for correcting environmental noncompliance and remediating environmental conditions at certain of our properties. In general, we have not experienced difficulty in complying with environmental laws in the past, and compliance with environmental laws has not had a material adverse effect on our financial condition, liquidity and results of operations. Our capital expenditures on environmental control facilities were not material during the past five years and such expenditures are not expected to be material to us in the foreseeable future.

We are currently, and may in the future be, required to incur costs relating to the investigation or remediation of property, including property where we have disposed of our waste, and for addressing environmental conditions. For instance, we have been identified as a potentially responsible party at third-party sites under the Comprehensive Environmental Response, Compensation and Liability Act of 1980, as amended, or comparable state laws, which provide for strict and, under certain circumstances, joint and several liability. We are participating in the cost of certain clean-up efforts at several of these sites. The availability of third-party payments or insurance for environmental remediation activities is subject to risks associated with the willingness and ability of the third party to make payments. However, our share of such costs has not been material and, based on available information, we do not expect our exposure at any of these locations to have a material adverse effect on our results of operations, liquidity or financial condition.

In addition to environmental laws and regulations, our operations are governed by a variety of laws and regulations, including those relating to workplace safety and worker health, principally the Occupational Safety and Health Act and regulations thereunder. We believe that we are in material compliance with these laws and regulations and do not believe that future compliance with such laws and regulations will have a material adverse effect on our business, financial condition, results of operations and cash flows.

Human Capital Resources

As of December 31, 2024, we employed approximately 6,300 employees in our operations around the world. Approximately 2,500 of these employees are in the United States, while the remaining 3,800 are employed in other countries. Approximately 33% of our employees are covered by a collective bargaining agreement.

The attraction, retention and development of employees is critical to the successful execution of the Company's strategy. The Company works diligently to attract the best talent from a diverse range of resources to meet current and future demands of our businesses. Hiring the right people for the long term and developing them for future roles is an important process across the overall organization. To support these objectives, the Company's human resource programs are designed to develop, reward and support employees through competitive compensation, internal advancement, comprehensive flexible benefit programs and a safe and healthy work environment.

Key areas of focus include:

Health & Safety: The success of our business is fundamentally connected to the well-being of our employees; accordingly, we are committed to their health, safety, and wellness. Our global health and safety programs are designed around dedicated environmental, health and safety standards and procedures specifically tailored at the facility level to address different jurisdiction and regulations, specific operating hazards, and unique working environments. The Company's objectives include a focus on regulatory compliance and protection of people and the environment.

Ethics & Compliance: Our Company is committed to values of honesty, integrity, respect and responsibility that foster high ethical standards in our relationships with each other, our customers and suppliers, and all those we do business with. Our Code of Business Conduct and Ethics (the "Code"), along with the policies and procedures referenced in the Code, provide guidance for all employees on topics such as anti-corruption and bribery, anti-trust and competition law, discrimination including our policy on harassment and retaliation, privacy, appropriate use of company assets, protection of confidential information and reporting concerns and violations. Should potential violations of the Code, our policies and procedures, or the law occur, employees are encouraged to notify our Chief Compliance Officer through our Ethics Hotline. We do not tolerate retaliation against anyone who reports a potential violation in good faith. The Chief Compliance Officer reports matters related to the Code to the Audit Committee of the Board of Directors on a quarterly basis.

Compensation & Benefits: Our policy is to competitively compensate our employees. The compensation philosophy is to align both short-term and long-term incentives with our strategic objectives and to consider market forces and the performance of our Company and the employee. We offer comprehensive employee benefits that vary by country and are competitive in the marketplace. Examples of benefits offered in the U.S. include a 401(k) plan, defined benefit - cash balance plan, comprehensive health benefits, employee assistance programs, business travel, life/disability insurance and supplemental voluntary insurance.

Training & Talent Development: The Company is committed to continued development of our workforce. Training is provided in several formats. In addition, various internship programs and informal mentoring demonstrate the Company's ongoing commitment and initiatives toward accelerating our future leaders.

Available Information

We file Annual Reports on Form 10-K, Quarterly Reports on Form 10-Q, Current Reports on Form 8-K, Proxy Statements and other information with the Securities and Exchange Commission ("SEC"). The public can obtain copies of these materials by accessing the SEC's website at <http://www.sec.gov>. In addition, as soon as reasonably practicable after such materials are filed with or furnished to the SEC, we make such materials available on our website free of charge at <http://www.pkoh.com>. The information on our website is not a part of this Annual Report on Form 10-K.

Information About our Executive Officers

Information with respect to our executive officers as of March 6, 2025, is as follows:

Name	Age	Position
Matthew V. Crawford	55	Chairman of the Board, Chief Executive Officer and President
Patrick W. Fogarty	63	Vice President and Chief Financial Officer
Robert D. Vilsack	64	Chief Legal and Administrative Officer, Corporate Secretary

Mr. Crawford was elected President in 2019 and Chairman of the Board and Chief Executive Officer in 2018. Prior to that, he served as President and Chief Operating Officer from 2003 to 2018. Mr. Crawford became one of our directors in August 1997 and has served as President of Crawford Group, Inc. since 1995.

Mr. Fogarty has been Vice President and Chief Financial Officer since 2015. Prior to that, Mr. Fogarty was Director of Corporate Development since 1997 and served as Director of Finance from 1995 to 1997.

Mr. Vilsack has been Secretary and Chief Legal Officer since joining us in 2002 and has served as Chief Administration Officer since 2020.

Item 1A. Risk Factors

The following risk factors set forth below and elsewhere in this Form 10-K could materially and adversely affect our business, results of operations and financial condition. These risks are not the only ones we may face. Although the risks are organized by headings, and each risk is discussed separately, many are interrelated. If any of the following risks occur, our business, results of operations or financial condition could be adversely affected.

Risks Relating to Economic Conditions

The industries in which we operate are cyclical and are affected by the economy in general.

We sell products to customers in industries that experience cyclical (expectancy of recurring periods of economic growth and slowdown) in demand for products and may experience substantial increases and decreases in business volume throughout economic cycles. Industries we serve, including the automotive and vehicle parts, heavy-duty truck, industrial equipment, steel, rail, oil and gas, electrical distribution and controls, aerospace and defense, recreational equipment, HVAC, electrical components, appliance and semiconductor equipment industries, are affected by consumer spending, general economic conditions and the impact of international trade, which have been adversely affected by inflation and could be adversely affected by tariffs and the renegotiation of trade agreements. A downturn in any of the industries we serve could have a material adverse effect on our financial condition, liquidity and results of operations.

Adverse credit market conditions may significantly affect our access to capital, cost of capital and ability to meet liquidity needs.

Disruptions, uncertainty or volatility in the credit markets, including as a result of a recession, may adversely impact our ability to access credit already arranged and the availability and cost of credit to us in the future. These market conditions may limit our ability to replace, in a timely manner, maturing liabilities and access the capital necessary to grow and maintain our business. Accordingly, we may be forced to delay raising capital or pay unattractive interest rates, which could increase our interest expense, decrease our profitability and significantly reduce our financial flexibility. Longer-term disruptions in the capital and credit markets as a result of uncertainty, changing or increased regulation, reduced alternatives or failures of significant financial institutions could adversely affect our access to liquidity needed for our business. Any disruption could require us to take measures to conserve cash until the markets stabilize or until alternative credit arrangements or other funding for our business needs can be arranged. Such measures could include deferring capital expenditures and reducing or eliminating future share repurchases or other discretionary uses of cash. Overall, our results of operations, financial condition and cash flows could be materially adversely affected by disruptions in the credit markets.

Adverse global economic conditions may have significant effects on our customers and suppliers that could result in material adverse effects on our business and operating results.

Significant reductions in available capital and liquidity from banks and other providers of credit, substantial reductions and fluctuations in equity and currency values worldwide, volatility in commodity prices for such items as crude oil, and concerns that the worldwide economy may enter into a prolonged recessionary period, may materially adversely affect our customers' access to capital or willingness to spend capital on our products or their ability to pay for products that they will order or have already ordered from us. In addition, unfavorable global economic conditions may materially adversely affect our suppliers' access to capital and liquidity with which they maintain their inventories, production levels and product quality, which could cause them to raise prices or lower production levels.

These potential effects of adverse global economic conditions are difficult to forecast and mitigate. As a consequence, our operating results for a particular period are difficult to predict, and, therefore, prior results are not necessarily indicative of results to be expected in future periods. Any of the foregoing effects could have a material adverse effect on our business, results of operations and financial condition.

Inflation may continue to have a significant effect on labor and raw material costs, which could continue to result in material adverse effects on our business and operating results.

Given recent inflationary trends and forecasts for rising inflation rates in the future, we expect further raw material price increases and higher labor costs, which may continue to adversely affect our business and operating results, particularly in the Assembly Components segment.

The new U.S. presidential administration has announced tariffs on goods manufactured abroad, including goods manufactured in China, Mexico and Canada, as well as on steel and aluminum. These tariffs will increase costs for certain goods imported into the United States, including certain of our raw materials and components, which will increase our costs. Our inability to pass along our increased costs to our customers, in whole or in part, could have a material adverse effect on our business and results of operations.

Risks Relating to Our Business and Operations

Because a significant portion of our sales is to the automotive and heavy-duty truck industries, a decrease in the demand of these industries or the loss of any of our major customers in these industries could adversely affect our financial health.

Demand for certain of our products is affected by, among other things, the relative strength or weakness of the automotive and heavy-duty truck industries. The domestic automotive and heavy-duty truck industries are also highly cyclical and may be adversely affected by international competition. In addition, the automotive and heavy-duty truck industries are significantly unionized and subject to work slowdowns and stoppages resulting from labor disputes, such as the United Auto Workers strike in 2023. We derived 32% and 10% of our net sales during the year ended December 31, 2024 from the automotive and heavy-duty truck industries, respectively.

The loss of a portion of business to any of our major automotive or heavy-duty truck customers could have a material adverse effect on our financial condition, cash flow and results of operations. We cannot assure you that we will maintain or improve our relationships in these industries or that we will continue to supply these customers at current levels.

Our Supply Technologies customers are generally not contractually obligated to purchase products and services from us.

We supply products and services to our Supply Technologies customers generally under purchase orders as opposed to long-term contracts. When we do enter into long-term contracts with our Supply Technologies customers, many of them only establish pricing terms and do not obligate our customers to buy required minimum amounts from us or to buy from us exclusively. Accordingly, many of our Supply Technologies customers may decrease the number of products and services that they purchase from us or even stop purchasing from us altogether, either of which could have a material adverse effect on our net sales and profitability.

We are dependent on key customers.

We rely on several key customers. For the year ended December 31, 2024, our ten largest customers accounted for approximately 24% of our net sales. Many of our customers place orders for products on an as-needed basis and operate in cyclical industries and, as a result, their order levels have varied from period to period in the past and may vary significantly in the future. Due to competitive issues, we have lost key customers in the past and may again in the future. Customer orders are dependent upon their markets and may be subject to delays or cancellations. As a result of dependence on our key customers, we could experience a material adverse effect on our business and results of operations if any of the following were to occur:

- the loss of any key customer, in whole or in part;
- the insolvency or bankruptcy of any key customer;
- a declining market in which customers reduce orders or demand reduced prices; or
- a strike or work stoppage at a key customer facility, which could affect both their suppliers and customers.

If any of our key customers become insolvent or file for bankruptcy, our ability to recover accounts receivable from that customer would be adversely affected and any payments we received in the preference period prior to a bankruptcy filing may be potentially forfeitable, which could adversely impact our results of operations.

We operate in highly competitive industries.

The markets in which all three of our segments sell their products are highly competitive. Some of our competitors are large companies that have greater financial resources than we have. We believe that the principal competitive factors for our Supply Technologies segment are an approach reflecting long-term business partnership and reliability, sourced product quality and conformity to customer specifications, timeliness of delivery, price and design and engineering capabilities. We believe that the principal competitive factors for our Assembly Components and Engineered Products segments are product quality and conformity to customer specifications, design and engineering capabilities, product development, timeliness of delivery and price. The rapidly evolving nature of the markets in which we compete may attract new entrants as they perceive opportunities, and our competitors may foresee the course of market development more accurately than we do. In addition, our competitors may develop products that are superior to our products or may adapt more quickly than we do to new technologies or evolving customer requirements.

We expect competitive pressures in our markets to remain strong. These pressures arise from existing competitors, other companies that may enter our existing or future markets and, in some cases, our customers, which may decide to internally produce items we sell. We cannot assure you that we will be able to compete successfully with our competitors. Failure to compete successfully could have a material adverse effect on our financial condition, liquidity and results of operations.

Our Supply Technologies business depends upon third parties for substantially all of our component parts.

Our Supply Technologies business purchases substantially all of its component parts from third-party suppliers and manufacturers. As such, it is subject to the risk of price fluctuations and periodic delays in the delivery of component parts. The price for our component parts could increase as a result of the tariffs imposed by the new U.S. presidential administration as well as retaliatory tariffs implemented by other governments. Additionally, failure by suppliers to continue to supply us with these component parts on commercially reasonable terms, or at all, could have a material adverse effect on us. We depend upon the ability of these suppliers, among other things, to meet stringent performance and quality specifications and to conform to delivery schedules. Failure by third-party suppliers to comply with these and other requirements could have a material adverse effect on our financial condition, liquidity and results of operations.

The raw materials used in our production processes and by our suppliers of component parts are subject to price and supply fluctuations that could continue to increase our costs of production and adversely affect our results of operations.

Our supply of raw materials for our Assembly Components and Engineered Products businesses could continue to be interrupted or adversely affected for a variety of reasons, including supply chain constraints and price increases, tariffs, raw material price inflation, supplier delays that increase lead times and higher freight costs, among other factors, may continue to have an adverse effect on our results of operations and profit margins. While we generally attempt to pass along increased raw materials prices to our customers in the form of price increases, there may be a time delay between the increased raw materials prices and our ability to increase the price of our products, or we may be unable to increase the prices of our products due to various factors.

Our suppliers of component parts, particularly in our Supply Technologies business, may continue to significantly and quickly increase their prices in response to increases in costs of the raw materials, such as steel, that they use to manufacture our component parts. We may not be able to increase our prices commensurate with our increased costs. Consequently, our results of operations and financial condition may be materially adversely affected.

The energy costs involved in our production processes and transportation are subject to fluctuations that are beyond our control and could significantly increase our costs of production.

Our manufacturing process and the transportation of raw materials, components and finished goods are energy intensive. Our manufacturing processes are dependent on adequate supplies of electricity and natural gas. A substantial increase in the cost of transportation fuel, natural gas or electricity could have a material adverse effect on our margins. We may experience higher than anticipated gas costs in the future, which could adversely affect our results of operations. In addition, a disruption or curtailment in supply could have a material adverse effect on our production and sales levels.

We may experience cybersecurity threats and cyber security incidents, breaches of, or disruptions to, our information technology systems or those of our third-party providers, or other compromises of our data, including the improper disclosure of personal or confidential data, which may adversely affect our operations and reputation.

We utilize information technology systems in connection with our business operations, including processing orders, managing inventory and accounts receivable collections, purchasing products, maintaining cost-effective operations, routing and re-routing orders. We also depend on our information technology systems to maintain confidential, proprietary and personal information relating to our current, former and prospective employees, customers and other third parties in these systems and in systems of third-party providers who we engage in connection with the processing and storage of certain information. Our information technology systems and those of our third-party providers are subject to breaches, disruptions or damage, which may be caused by a wide array of causes, including telecommunications failures, computer failures, power outages, ransomware attacks, the deployment of harmful malware, denial-of-services attacks, computer viruses, cybersecurity incidents and other intrusions, which could result in the disruption of our operations, or information misappropriation, such as theft of intellectual property or inappropriate disclosure of personal and confidential information. Cybersecurity threat actors also may attempt to exploit vulnerabilities through software including software commonly used by companies in cloud-based services and bundled software. In addition, we could also experience data or cybersecurity incidents stemming from the intentional or negligent acts of our employees or other third parties. To the extent our information technology systems or those of our third-party providers are disabled, compromised, or disrupted, key business processes could be interrupted. Any such operational disruptions and/or misappropriation of information, whether in systems we maintain or are maintained by others, could have a material adverse effect on our business. In addition, any such damage, any cybersecurity incident, compromise or breach to our systems or those of our vendors, could result in a violation of privacy and other laws, and expose us to significant legal and financial liability, including costs related to individual claims or consumer class actions, commercial litigation, administrative, and civil or criminal investigations or actions, regulatory intervention and sanctions or fines, investigation and remediation costs, loss of intellectual property, release of confidential information, and costs related to alteration or corruption of data or systems.

We recognize the ever-present global risk of cybersecurity threats, cybersecurity incidents, and cyberattacks from diverse threat actors, including nation-states, cybercriminals, hacktivists, insiders and organized crime. In spite of our efforts, we (or third parties we rely on) may not be able to fully, continuously and effectively implement security controls as intended. We utilize a risk-based approach and judgment to determine the security controls to implement, but it is possible we may not implement appropriate controls if we do not recognize or we underestimate a particular risk. In addition, security controls, no matter how well designed or implemented, may only mitigate and not fully eliminate risks. Further, even events that are detected by security tools or third parties may not always be immediately understood or acted upon. While no organization is immune to attack attempts and we cannot eliminate all risks from cybersecurity threats or provide assurance that we have not experienced an undetected cybersecurity incident, in 2024 we did not identify any material cybersecurity events that have materially affected or are reasonably likely to materially affect our business strategy, results of operations or financial condition.

Operating problems in our business may materially adversely affect our financial condition and results of operations.

We are subject to the usual hazards associated with manufacturing and the related storage and transportation of raw materials, products and waste, including explosions, fires, leaks, discharges, inclement weather (including that caused by climate change), natural disasters, mechanical failure, unscheduled downtime and transportation interruption or calamities. The occurrence of material operating problems at our facilities may have a material adverse effect on our operations as a whole, both during and after the period of operational difficulties.

We have a significant amount of goodwill, and any future goodwill impairment charges could adversely impact our results of operations.

As of December 31, 2024, we had goodwill of \$111.7 million. The future occurrence of a potential indicator of impairment, such as a significant adverse change in legal factors or business climate, unanticipated competition, a material negative change in relationships with significant customers, strategic decisions made in response to economic or competitive conditions, loss of key personnel or a more-likely-than-not expectation that a reporting unit or a significant portion of a reporting unit will be sold or disposed of, could result in goodwill impairment charges, which could adversely impact our results of operations. For additional information, see Note 7, Goodwill, to the consolidated financial statements included elsewhere herein.

Our business and operating results may be adversely affected by natural disasters, other catastrophic events or public health issues, all of which are beyond our control.

While we have taken precautions to prevent production and service interruptions at our global facilities, severe weather conditions and other conditions, including those that may be caused by climate change, such as hurricanes, tornadoes, and earthquakes; other natural disasters; or public health issues in areas in which we have manufacturing facilities or from which we obtain products may cause physical damage to our properties, closure of one or more of our business facilities, lack of adequate work force in a market, temporary disruption in the supply of inventory, disruption in the transport of products and utilities, or delays in the delivery of products to our customers. Any of these factors may disrupt our operations and adversely affect our financial condition and the results of operations.

The insurance that we maintain may not fully cover all potential expenses.

We maintain property, business interruption and casualty insurance, but such insurance may not cover all risks associated with the hazards of our business and is subject to limitation, including deductible and maximum liabilities covered. We are potentially at risk if one or more of our insurance carriers fail. Additionally, severe disruptions in the domestic and global financial markets could adversely impact the ratings and survival of some insurers. In the future, we may not be able to obtain coverage at current levels, and our premiums may increase significantly on coverage that we maintain.

Risks Relating to Human Capital

Some of our employees belong to labor unions, and strikes or work stoppages could adversely affect our operations.

As of December 31, 2024, we were a party to eight collective bargaining agreements with various labor unions that covered approximately 2,100 full-time employees. Our inability to negotiate acceptable contracts with these unions could result in, among other things, strikes, work stoppages or other slowdowns by the affected workers and increased operating costs as a result of higher wages or benefits paid to union members. If the unionized workers were to engage in a strike, work stoppage or other slowdown, or other employees were to become unionized, we could experience a significant disruption of our operations and higher ongoing labor costs, which could have a material adverse effect on our business, financial condition and results of operations.

Labor shortages could continue to adversely affect our business, results of operations and financial condition.

Labor shortages leading to higher labor costs, production inefficiencies and plant downtime have had and could continue to have an adverse effect on our business, results of operations and financial condition. In addition, we have seen a decline in the skilled labor applicant pool and increased competition for skilled labor. In addition, labor disturbances affecting our customers could continue to impact our sales to certain key customers, particularly in the automotive and heavy-duty truck industries, which could continue to have an adverse effect on our business, results of operations and financial condition.

The loss of key executives could adversely impact us.

Our success depends upon the efforts, abilities and expertise of our executive officers and other senior managers, including Matthew Crawford, our Chairman, Chief Executive Officer and President, as well as the president of each of our operating units. Additionally, an event of default occurs under our revolving credit facility if Messrs. M. Crawford and Edward Crawford, our former President, or certain of their related parties own in the aggregate less than 15% of Holdings' outstanding common stock and, if at such time, neither Mr. M. Crawford nor Mr. E. Crawford holds the office of chairman, chief executive officer or president. The loss of the services of Mr. M. Crawford, senior and executive officers, and/or other key individuals could have a material adverse effect on our financial condition, liquidity and results of operations.

Risks Relating to Legal, Compliance and Regulatory Matters

Potential product liability risks exist from the products that we sell.

Our businesses expose us to potential product liability risks that are inherent in the design, manufacture and sale of our products and products of third-party vendors that we use or resell. While we currently maintain what we believe to be suitable and adequate product liability insurance, we cannot assure you that we will be able to maintain our insurance on acceptable terms or that our insurance will provide adequate protection against potential liabilities. In the event of a claim against us, a lack of sufficient insurance coverage could have a material adverse effect on our financial condition, liquidity and results of operations. Moreover, even if we maintain adequate insurance, any successful claim could have a material adverse effect on our financial condition, liquidity and results of operations.

We operate and source internationally, which exposes us to the risks of doing business abroad.

Our operations are subject to the risks of doing business abroad, including the following:

- fluctuations in currency exchange rates;
- limitations on ownership and on repatriation of earnings;
- transportation delays and interruptions;
- political, social and economic instability and disruptions, including the conflicts between Russia and Ukraine and in the middle east, or political unrest, including the rising tension between China and the United States;
- potential disruption that could be caused by the partial or complete reconfiguration of the European Union;
- government embargoes or foreign trade restrictions;
- the imposition of duties and tariffs on both imports and exports and other trade barriers;
- import and export controls;
- labor unrest and current and changing regulatory environments;
- the potential for nationalization of enterprises;
- disadvantages of competing against companies from countries that are not subject to U.S. laws and regulations, including the U.S. Foreign Corrupt Practices Act ("FCPA");
- increasingly complex laws and regulations concerning privacy and data security, including the European Union's General Data Protection Regulation;
- difficulties in staffing and managing multinational operations;
- limitations on our ability to enforce legal rights and remedies; and
- potentially adverse tax consequences.

We are also exposed to risks relating to U.S. policy with respect to companies doing business in foreign jurisdictions. Changes in tax policy, trade regulations or trade agreements, such as the disallowance of tax deductions on imported merchandise or the imposition of new tariffs on imported or exported products, could have a material adverse effect on our business and results of operations.

Our international sales and operations are also sensitive to changes in foreign national priorities, as well as to political and economic instability. For example, our business in the European Union or elsewhere may be impacted by the conflict between Russia and Ukraine and any economic or trade sanctions enacted in response to the conflict. Any such conflict may also impact our ability to secure raw materials and exacerbate the supply chain disruption we have experienced and further limit our ability to secure certain raw materials or services. Further military action or cyberattacks by Russia to counteract any sanctions may have an impact on demand for our goods and services and adversely impact our results of operation. Our success as a global business will depend, in part, upon our ability to succeed in differing legal, regulatory, economic, social and political conditions by developing, implementing and maintaining policies and strategies that are effective in each location where we do business.

In addition, we could be adversely affected by violations of the FCPA and similar worldwide anti-bribery laws. The FCPA and similar anti-bribery laws in other jurisdictions generally prohibit companies and their intermediaries from making improper payments to non-U.S. officials for the purpose of obtaining or retaining business. Our policies mandate compliance with these anti-bribery laws. We operate in many parts of the world that have experienced governmental corruption to some degree and, in certain circumstances, strict compliance with anti-bribery laws may conflict with local customs and practices. We cannot assure you that our internal controls and procedures always will protect us from the reckless or criminal acts committed by our employees or agents. If we are found to be liable for FCPA violations (either due to our own acts or our inadvertence or due to the acts or inadvertence of others), we could suffer from criminal or civil penalties or other sanctions, which could have a material adverse effect on our business.

Any of the events enumerated above could have an adverse effect on our operations in the future by reducing the demand for our products and services, decreasing the prices at which we can sell our products or otherwise having an adverse effect on our business, financial condition or results of operations. We cannot assure you that we will continue to operate in compliance with applicable customs, currency exchange control regulations, transfer pricing regulations or any other laws or regulations to which we may be subject. We also cannot assure you that these laws will not be modified.

We are subject to significant environmental, health and safety laws and regulations and related compliance expenditures and liabilities.

Our businesses are subject to many foreign, federal, state and local environmental, health and safety laws and regulations, particularly with respect to the use, handling, treatment, storage, discharge and disposal of substances and hazardous wastes used or generated in our manufacturing processes. Compliance with these laws and regulations is a significant factor in our business. We have incurred and expect to continue to incur significant expenditures to comply with applicable environmental laws and regulations. Our failure to comply with applicable environmental laws and regulations and permit requirements could result in civil or criminal fines or penalties or enforcement actions, including regulatory or judicial orders enjoining or curtailing operations or requiring corrective measures, installation of pollution control equipment or remedial actions.

We are currently, and may in the future be, required to incur costs relating to the investigation or remediation of property, including property where we have disposed of our waste, and for addressing environmental conditions. Some environmental laws and regulations impose liability and responsibility on present and former owners, operators or users of facilities and sites for contamination at such facilities and sites without regard to causation or knowledge of contamination. In addition, we occasionally evaluate various alternatives with respect to our facilities, including possible dispositions or closures. Investigations undertaken in connection with these activities may lead to discoveries of contamination that must be remediated, and closures of facilities may trigger compliance requirements that are not applicable to operating facilities. Consequently, we cannot assure you that existing or future circumstances, the development of new facts or the failure of third parties to address contamination at current or former facilities or properties will not require significant expenditures by us.

We expect to continue to be subject to increasingly stringent environmental and health and safety laws and regulations. It is difficult to predict the future interpretation and development of environmental and health and safety laws and regulations or their impact on our future earnings and operations. We anticipate that compliance will continue to require increased capital expenditures and operating costs. Any increase in these costs, or unanticipated liabilities arising from, among other things, discovery of previously unknown conditions or more aggressive enforcement actions, could adversely affect our results of operations, and there is no assurance that they will not exceed our reserves or have a material adverse effect on our financial condition.

We may be exposed to certain regulatory and financial risks related to climate change.

Growing concerns about climate change may result in the imposition of additional regulations or restrictions to which we may become subject. A number of governments or governmental bodies have introduced or are contemplating regulatory changes in response

to climate change, including regulating greenhouse gas emissions. The outcome of new legislation or regulation in the U.S. and other jurisdictions in which we operate may result in new or additional requirements, additional charges to fund energy efficiency activities, and fees or restrictions on certain activities. Compliance with these climate change initiatives may also result in additional costs to us, including, among other things, increased production costs, additional taxes, reduced emission allowances or additional restrictions on production or operations. Any adopted future climate change regulations could also negatively impact our ability to compete with companies situated in areas not subject to such limitations. Even without such regulation, increased public awareness and adverse publicity about potential impacts on climate change emanating from us or our industry could harm us. We may not be able to recover the cost of compliance with new or more stringent laws and regulations, which could adversely affect our results of operations, financial position or cash flows.

Risks Relating to Our Debt

Adverse global economic conditions may have significant effects on our customers that would result in our inability to borrow or to meet our debt service coverage ratio in our revolving credit facility.

As of December 31, 2024, we were in compliance with our debt service coverage ratio covenant and other covenants contained in our revolving credit facility. While we expect to remain in compliance throughout 2025, declines in demand in the automotive industry and in sales volumes could adversely impact our ability to remain in compliance with certain of these financial covenants. Additionally, to the extent our customers are adversely affected by a decline in the economy in general, they may not be able to pay their accounts payable to us on a timely basis or at all, which would make the accounts receivable ineligible for purposes of the revolving credit facility and could reduce our borrowing base and our ability to borrow.

Risks Relating to the Execution of our Strategy

We may encounter difficulty in expanding our business through targeted acquisitions.

We have pursued, and may continue to pursue, targeted acquisition opportunities that we believe would complement our business. We cannot assure you that we will be successful in consummating any acquisitions.

Any targeted acquisitions will be accompanied by the risks commonly encountered in acquisitions of businesses. We may not successfully overcome these risks or any other problems encountered in connection with any of our acquisitions, including the possible inability to integrate an acquired business' operations, information technology, services and products into our business; diversion of management's attention; the assumption of unknown liabilities; increases in our indebtedness; the failure to achieve the strategic objectives of those acquisitions; and other unanticipated problems, some or all of which could materially and adversely affect us. The process of integrating operations could cause an interruption of, or loss of momentum in, our activities. Any delays or difficulties encountered in connection with any acquisition and the integration of our operations could have a material adverse effect on our business, results of operations, financial condition or prospects of our business.

Risks Relating to Our Common Stock

Our Chairman of the Board, Chief Executive Officer and President and former President collectively beneficially own a significant portion of Holdings' outstanding common stock and their interests may conflict with yours.

As of December 31, 2024, Matthew Crawford, our Chairman of the Board, Chief Executive Officer and President, and Edward Crawford, our former President, collectively beneficially owned approximately 28% of Holdings' outstanding common stock. Mr. M. Crawford is Mr. E. Crawford's son. Their interests could conflict with your interests.

Item 1B. *Unresolved Staff Comments*

None.

Item 1C. *Cybersecurity*

Management of cybersecurity risks is an integral part of our overall risk management framework. We have developed an information security program designed to assess, identify and manage material risks from cybersecurity threats, which is integrated into our overall risk management program and governance structure. The program includes policies and procedures that identify how security measures and controls drawn from relevant frameworks are developed, implemented and maintained. Our cybersecurity risk management program works to balance critical infrastructure, network, application, cloud and information security objectives with overall business objectives and risk tolerance. Specific controls that are used include endpoint threat detection and response, identity

and access management, privileged access management, logging and monitoring involving the use of security information and event management, multi-factor authentication, firewalls, and intrusion detection and prevention, and vulnerability and patch management.

We also use threat intelligence to inform our defensive measures. We use external and internal threat intelligence sources, including information from vendors and Information Sharing and Analysis Centers.

We have the following security processes in place:

- **Cybersecurity Awareness Trainings:** We educate employees on best practices for online safety and for identifying potential cybersecurity threats, including by initiating quarterly training programs for our non-represented salaried workforce.
- **Simulated Cyberattacks:** With assistance from third-party providers, we periodically conduct penetration and vulnerability testing to test our technical controls and incident response plans.
- **Security Monitoring:** We monitor our information technology environment with both our internal cybersecurity resources and third-party service providers. We also have processes in place to monitor the cybersecurity practices of various third-party service providers, including certain vendors that have access to our information systems or sensitive data.
- **Proactive Reporting and Investigation:** As part of our training initiatives, we educate certain employees depending on their role on how to report any suspicious cyber activity or potential cybersecurity issues, and we investigate reported concerns.

Third-party security firms are used in different capacities to provide or operate some of these programs, controls, and technology systems, including cloud-based platforms and services.

Our Board of Directors (“Board”) has overall oversight responsibility for our enterprise risk management framework and cybersecurity risk management. The Board is responsible for ensuring that management has processes in place designed to identify and evaluate cybersecurity risks to which the Company is exposed and implement processes and programs to manage cybersecurity risks and mitigate cybersecurity incidents. Management, including the Vice President of Information Technology with support from our Information Technology Council, updates the Board on at least an annual basis regarding our cybersecurity programs and material cybersecurity risks and mitigation strategies. Our Vice President of Information Technology, who has more than 30-years of global information technology, systems, and IT audit experience, is responsible for identifying, considering and assessing material cybersecurity risks on an ongoing basis; establishing processes to ensure that such potential cybersecurity risk exposures are monitored; putting in place appropriate mitigation measures; and maintaining cybersecurity programs. The Vice President of Technology oversees a cybersecurity team that includes experienced cybersecurity professionals with credentials such as CISSP (Certified Information Systems Security Professional), CompTIA Security+, and ISO27001. Our Vice President of Information Technology receives reports from our Information Technology Council and monitors the prevention, detection, mitigation and remediation of cybersecurity incidents. Our Information Technology Council includes experienced information systems security professionals and information security managers. Our Information Technology Council, which is composed of technology leaders from each of our business units, collaborates on a cross-functional basis to identify practices that can counter threats and to monitor our cybersecurity programs and our cybersecurity incident response plans.

In 2024, we did not identify any material cybersecurity incidents that have materially affected or are reasonably likely to materially affect our business strategy, results of operations or financial condition. For more information about these risks, please see Part I - Item 1A. “Risk Factors - We may experience breaches of, or disruptions to, our information technology systems or those of our third-party providers, or other compromises of our data, including the improper disclosure of personal or confidential data, which may adversely affect our operations and reputation.”

Item 2. *Properties*

As of December 31, 2024, our operations included numerous manufacturing and supply chain logistics services facilities located in 28 states in the United States and in Puerto Rico, as well as in Asia, Canada, Europe, Mexico and Brazil. We lease our world headquarters located in Cleveland, Ohio, which also includes the world headquarters for certain of our businesses. We believe our manufacturing, logistics and corporate office facilities are well-maintained and are suitable and adequate, and they have sufficient productive capacity to meet our current needs.

The following table provides information relative to our principal facilities as of December 31, 2024.

Segment ⁽¹⁾	Location	Owned or Leased	Use
SUPPLY TECHNOLOGIES	Brampton, Ontario, Canada	Leased	Manufacturing
	Minneapolis, MN	Leased	Logistics
	Changzhou, China	Leased	Manufacturing
	Cleveland, OH	Leased	Supply Technologies Corporate Office
	Dayton, OH	Leased	Logistics
	Memphis, TN	Leased	Logistics
	Suwanee, GA	Leased	Logistics
	Streetsboro, OH	Leased	Manufacturing
	Allentown, PA	Leased	Logistics
	Carol Stream, IL	Leased	Logistics
	Solon, OH	Leased	Logistics
	Dublin, VA	Leased	Logistics
	Tulsa, OK	Leased	Logistics
	Winston-Salem, NC	Leased	Logistics and Office
ASSEMBLY COMPONENTS	Ocala, FL	Owned	Manufacturing
	Acuna, Mexico	Leased	Manufacturing
	Lexington, TN	Owned	Manufacturing
	Angola, IN	Owned	Manufacturing
	Birmingham, England	Owned	Manufacturing
ENGINEERED PRODUCTS	Canton, OH	Owned	Manufacturing
	Canton, OH	Leased	Manufacturing
	Newport, AR	Owned	Manufacturing
	Warren, OH	Owned	Manufacturing
	Erie, PA	Owned	Manufacturing
	La Roeulx, Belgium	Owned	Manufacturing
	Brookfield, WI	Leased	Manufacturing
	Madison Heights, MI	Leased	Manufacturing
	Leini, Italy	Owned	Manufacturing
	Pune, India	Owned	Manufacturing
	Chennai, India	Owned	Manufacturing
	Cortland, OH	Owned	Office and Manufacturing
	Valencia, Spain	Owned	Manufacturing

(1) Each segment has other facilities, none of which is deemed to be a principal facility.

Item 3. *Legal Proceedings*

We are involved in a variety of claims, suits, investigations and administrative proceedings with respect to commercial, premises liability, product liability, employment, personal injury and environmental matters arising from the ordinary course of business. While any such claims, suits, investigations and proceedings involve an element of uncertainty, in the opinion of management, liabilities, if any, arising from currently pending or threatened claims, suits, investigations and proceedings are not expected to have a material adverse effect on our financial condition, liquidity or results of operations.

In addition to the routine claims, suits, investigations and proceedings noted above, we were a party to the lawsuits and legal proceedings described below as of December 31, 2024:

We were a co-defendant in approximately 108 cases asserting claims on behalf of approximately 152 plaintiffs alleging personal injury as a result of exposure to asbestos. These asbestos cases generally relate to production and sale of asbestos-containing products and allege various theories of liability, including negligence, gross negligence and strict liability, and seek compensatory and, in some cases, punitive damages.

In every asbestos case in which we are named as a party, the complaints are filed against multiple named defendants. In substantially all of the asbestos cases, the plaintiffs either claim damages in excess of a specified amount, typically a minimum amount sufficient to establish jurisdiction of the court in which the case was filed (jurisdictional minimums generally range from \$25,000 to

\$75,000), or do not specify the monetary damages sought. To the extent that any specific amount of damages is sought, the amount applies to claims against all named defendants.

Historically, we have been dismissed from asbestos cases on the basis that the plaintiff incorrectly sued one of our subsidiaries or because the plaintiff failed to identify any asbestos-containing product manufactured or sold by us or our subsidiaries. We intend to vigorously defend these asbestos cases and believe we will continue to be successful in being dismissed from such cases. However, it is not possible to predict the ultimate outcome of asbestos-related lawsuits, claims and proceedings due to the unpredictable nature of personal injury litigation. Despite this uncertainty, and although our results of operations and cash flows for a particular period could be adversely affected by asbestos-related lawsuits, claims and proceedings, management believes that the ultimate resolution of these matters will not have a material adverse effect on our financial condition, liquidity or results of operations. Among the factors management considered in reaching this conclusion were: (a) our historical success in being dismissed from these types of lawsuits on the bases mentioned above; (b) many cases have been improperly filed against one of our subsidiaries; (c) in many cases the plaintiffs have been unable to establish any causal relationship to us or our products or premises; (d) in many cases, the plaintiffs have been unable to demonstrate that they have suffered any identifiable injury or compensable loss at all or that any injuries that they have incurred did in fact result from alleged exposure to asbestos; and (e) the complaints assert claims against multiple defendants and, in most cases, the damages alleged are not attributed to individual defendants. Additionally, we do not believe that the amounts claimed in any of the asbestos cases are meaningful indicators of our potential exposure because the amounts claimed typically bear no relation to the extent of the plaintiff's injury, if any.

Our cost of defending these lawsuits has not been material to date and, based upon available information, our management does not expect its future costs for asbestos-related lawsuits to have a material adverse effect on our results of operations, liquidity or financial position.

Item 4. *Mine Safety Disclosures*

Not applicable.

PART II

Item 5. *Market for the Registrant's Common Equity, Related Stockholder Matters and Issuer Purchases of Equity Securities*

Our common stock, par value \$1.00 per share, trades on the Nasdaq Global Select Market under the symbol "PKOH".

The number of shareholders of record of our common stock as of February 28, 2025 was 371.

Issuer Purchases of Equity Securities

Set forth below is information regarding repurchases of our common stock during the fourth quarter of the year ended December 31, 2024.

Period	Total Number of Shares Purchased ⁽¹⁾	Average Price Paid Per Share	Total Number of Shares Purchased as Part of Publicly Announced Plans	Maximum Number of Shares That May Yet Be Purchased Under the Plans or Program ⁽²⁾
October 1 — October 31, 2024	3,698	\$29.88	—	443,207
November 1 — November 30, 2024	426	32.28	—	443,207
December 1 — December 31, 2024	675	31.17	—	443,207
Total	4,799	\$30.28	—	443,207

(1) Consists of an aggregate total of 4,799 shares of common stock we acquired from recipients of restricted stock awards at the time of vesting of such awards in order to settle recipient minimum withholding tax liabilities.

(2) On March 11, 2020, we announced a share repurchase program whereby we may repurchase up to 1.0 million shares of our outstanding common stock. The repurchase program has no expiration date.

Item 6. *[Reserved]*

Item 7. *Management's Discussion and Analysis of Financial Condition and Results of Operations*

Our consolidated financial statements include the accounts of Park-Ohio Holdings Corp. and its subsidiaries. All intercompany transactions have been eliminated in consolidation.

EXECUTIVE OVERVIEW

General

We are a diversified international company providing world-class customers with a supply chain management outsourcing service, capital equipment used on their production lines, and manufactured components used to assemble their products. We operate through three reportable segments: Supply Technologies, Assembly Components and Engineered Products. Refer to Part 1, Item 1. Business for descriptions of our business segments.

On December 29, 2023, the Company completed the sale to Angstrom Automotive Group (“Angstrom”) of its Aluminum Products business, which has been classified as a discontinued operation for all periods presented.

Subsequent Events

On January 24, 2025, the Company’s Board of Directors declared a quarterly dividend of \$0.125 per common share. The dividend was paid on February 21, 2025, to shareholders of record as of the close of business on February 7, 2025 and resulted in cash payments of \$1.8 million.

RESULTS FROM CONTINUING OPERATIONS

This section of this Annual Report on Form 10-K generally discusses 2024 and 2023 items and year-to-year comparisons between 2024 and 2023. Discussions of 2022 items and year-over-year comparisons between 2023 and 2022 that are not included in this Annual Report on Form 10-K can be found in “Management’s Discussion and Analysis of Financial Condition and Results of Operations” in Part II, Item 7 of the Company’s Annual Report on Form 10-K for the year ended December 31, 2023. The amounts below exclude discontinued operations.

2024 Compared with 2023 and 2023 Compared with 2022

				2024 vs. 2023		2023 vs. 2022	
	2024	2023	2022	\$ Change	% Change	\$ Change	% Change
	(Dollars in millions, except per share data)						
Net sales	\$ 1,656.2	\$ 1,659.7	\$ 1,492.9	\$ (3.5)	—%	\$ 166.8	11%
Cost of sales	1,374.8	1,388.3	1,282.4	(13.5)	(1)%	105.9	8%
Gross margin	17.0%	16.4%	14.1%				
Selling, general and administrative (“SG&A”) expenses	187.4	181.5	162.2	5.9	3%	19.3	12%
SG&A expenses as a percentage of net sales	11.3%	10.9%	10.9%				
Restructuring and other special charges	4.9	6.6	17.3	(1.7)	(26)%	(10.7)	(62)%
Gains on sales of assets, net	(2.5)	(0.8)	(2.4)	(1.7)	*	1.6	*
Other expense	5.0	—	—	5.0	*	—	*
Operating income	86.6	84.1	33.4	2.5	3%	50.7	152%
Other components of pension and other postretirement benefits income, net	5.2	2.5	11.1	2.7	108%	(8.6)	(77)%
Interest expense, net	(47.4)	(45.1)	(33.8)	(2.3)	5%	(11.3)	33%
Income from continuing operations before income taxes	44.4	41.5	10.7	2.9	7%	30.8	288%
Income tax (expense) benefit	(4.9)	(8.5)	0.7	3.6	(42)%	(9.2)	1,314%
Income from continuing operations	39.5	33.0	11.4	6.5	20%	21.6	189%
Loss (income) attributable to noncontrolling interest	2.7	1.0	(1.3)	1.7	170%	2.3	177%
Income from continuing operations attributable to ParkOhio common shareholders	\$ 42.2	\$ 34.0	\$ 10.1	\$ 8.2	24%	\$ 23.9	237%
Earnings from continuing operations per common share attributable to ParkOhio common shareholders:							
Basic:							
Continuing operations	\$ 3.27	\$ 2.76	\$ 0.83	\$ 0.51	18%	\$ 1.93	233%
Diluted:							
Continuing operations	\$ 3.19	\$ 2.72	\$ 0.83	\$ 0.47	17%	\$ 1.89	228%

* Calculation not meaningful

2024 Compared with 2023

Net Sales

Net sales were \$1,656.2 million in 2024 compared to \$1,659.7 million in 2023, a decrease of 0.2%. The decrease was primarily due to lower sales in the Assembly Components segment, partially offset by higher sales in our Supply Technologies segment and in the capital equipment business in our Engineered Products segment.

The factors explaining the changes in segment net sales for the year ended December 31, 2024 compared to the year ended December 31, 2023 are contained in the “Segment Results” section below.

Cost of Sales and Gross Margin

Cost of sales decreased 1% to \$1,374.8 million in 2024 compared to \$1,388.3 million in 2023. The decrease was driven by ongoing profit improvement initiatives and the decrease in net sales described above. Gross margin was 17.0% in 2024 compared to 16.4% in 2023. The gross margin improvement was driven by improved operating profit in our Supply Technologies segment; higher sales and improved margins in our capital equipment business; and ongoing profit improvement initiatives.

SG&A Expenses

SG&A expenses increased to \$187.4 million, or 11.3% of net sales, in 2024 from \$181.5 million, or 10.9% of net sales, in 2023. The SG&A expense increase was driven by SG&A expenses in our acquired EMA Indutec GmbH (“EMA”) business, ongoing inflation and higher employee costs.

Restructuring and other special charges

During 2024, the Company recorded restructuring and other special charges of \$4.9 million compared to \$6.6 million in 2023. The charges in both years relate primarily to plant closure and consolidation activities and other initiatives in the Company’s Assembly Components and Engineered Products segments.

Gains on Sales of Assets, net

During 2024, the Company sold real estate and other assets within its Engineered Products segment for cash proceeds of \$9.3 million, resulting in a net gain of \$0.8 million. The Company also sold real estate within its Assembly Components segment for cash proceeds of \$2.2 million, resulting in a net gain of \$1.7 million. The total net gain of \$2.5 million is recorded on a separate line in the Consolidated Statements of Operations and is excluded from segment income.

During 2023, in connection with its plant closure and consolidation initiatives, the Company sold real estate within its Engineered Products segment for cash proceeds of \$1.4 million, resulting in a net gain of \$0.8 million. The Company also sold other real estate for cash proceeds of \$0.6 million. The total net gain of \$0.8 million is recorded on a separate line in the Consolidated Statements of Operations and is excluded from segment income.

Other Components of Pension and Other Postretirement Benefits (“OPEB”) Income, Net

Other components of pension and OPEB income, net was \$5.2 million in 2024 compared to \$2.5 million in 2023. The increase in 2024 was due to lower net actuarial losses impacting 2024 compared to 2023.

Interest Expense, Net

Interest expense, net increased to \$47.4 million in 2024 compared to \$45.1 million in 2023. The increase was due to higher average interest rates partially offset by lower average outstanding borrowings in 2024 compared to 2023. Our average effective borrowing rate was 7.0% in 2024 compared to 6.6% in 2023.

Income Tax Expense

Income tax expense in 2024 was \$4.9 million on pre-tax income of \$44.4 million, for an effective tax rate of 11.0%, which was less than the U.S. statutory rate of 21%, primarily as a result of the tax benefit of the research and development tax credit and the release of certain valuation allowances.

Income tax expense in 2023 was \$8.5 million on pre-tax income of \$41.5 million, for an effective tax rate of 20.5%, which approximated the U.S. statutory rate of 21%, as the tax benefits of the foreign tax credit and research and development tax credit were offset by the tax expense of foreign earnings, GILTI and non-deductible expenses.

SEGMENT RESULTS

For purposes of measuring business segment performance, the chief operating decision maker utilizes segment operating income, which is defined as revenues less expenses identifiable to the product lines within each segment. The Company does not allocate items that are non-operating; unusual in nature; or corporate costs, which include but are not limited to executive compensation and corporate office costs. Segment operating income reconciles to consolidated income before income taxes by adjusting for corporate costs; gains on sales of assets; other expenses; other components of pension and other postretirement benefits income, net; and interest expense, net.

Supply Technologies Segment

	Year Ended December 31,		
	2024	2023	2022
	(Dollars in millions)		
Net sales	\$ 775.8	\$ 763.4	\$ 711.5
Segment operating income	\$ 75.0	\$ 59.0	\$ 45.7
Segment operating income margin	9.7%	7.7%	6.4%

2024 Compared to 2023

Net sales increased 1.6% in 2024 compared to 2023 due to continued strong demand in many of the Company's key end markets, with the largest increases in the aerospace and defense, heavy-duty truck, electrical distribution and consumer electronics end markets, partially offset by decreases in the power sports and industrial and agricultural equipment end markets. In addition, net sales benefited from higher customer demand for our proprietary products throughout North America and Europe in our fastener manufacturing business.

Segment operating income increased \$16.0 million to \$75.0 million in 2024 compared to 2023, and segment operating income margin increased 200 basis points in 2024 compared to a year ago. These increases were due primarily to the increase in sales, profit improvement initiatives and higher profit flow-through from strong demand in our fastener manufacturing business.

Assembly Components Segment

	Year Ended December 31,		
	2024	2023	2022
	(Dollars in millions)		
Net sales	\$ 398.7	\$ 427.8	\$ 388.8
Segment operating income	\$ 25.4	\$ 33.4	\$ 1.1
Segment operating income margin	6.4%	7.8%	0.3%

2024 Compared to 2023

Net sales decreased 6.8% in 2024 compared to 2023 due primarily to lower product pricing on certain legacy programs and lower unit volumes primarily on end-of-life programs, partially offset by higher product pricing on certain other programs.

Segment operating income was \$25.4 million in 2024 compared to \$33.4 million in 2023 and segment operating income margin decreased 140 basis points in 2024 compared to a year ago. The decreases were due to the lower product pricing and unit volumes, which were partially offset by profit enhancement initiatives in 2024. During 2024 and 2023, we incurred \$1.1 million and \$1.5 million, respectively, of charges related to restructuring activities.

Engineered Products Segment

	Year Ended December 31,		
	2024	2023	2022
	(Dollars in millions)		
Net sales	\$ 481.7	\$ 468.5	\$ 392.6
Segment operating income	\$ 17.7	\$ 19.1	\$ 14.8
Segment operating income margin	3.7%	4.1%	3.8%

2024 Compared to 2023

Net sales were 2.8% higher in 2024 compared to 2023 driven by higher new capital equipment and aftermarket sales in our capital equipment business.

Segment operating income in 2024 decreased \$1.4 million compared to 2023, and segment operating margin decreased 40 basis points in 2024 compared to 2023, as a result of higher operating costs in our forged and machined products business, partially offset by the higher sales and improved margins in our capital equipment business. In addition, restructuring and other special charges were \$3.6 million in 2024 and \$4.9 million in 2023.

Liquidity and Capital Resources

The following table summarizes the major components of cash flows:

	2024	2023	2022
	(In millions)		
Cash provided (used) by:			
Operating activities	\$ 35.0	\$ 53.4	\$ (26.6)
Investing activities	(30.9)	(11.9)	(40.7)
Financing activities	1.6	(36.6)	84.6
Discontinued operations	(5.2)	(9.2)	(9.2)
Effect of exchange rate changes on cash	(2.2)	0.9	(4.0)
(Decrease) increase in cash and cash equivalents	<u>\$ (1.7)</u>	<u>\$ (3.4)</u>	<u>\$ 4.1</u>

Operating Activities

In 2024, we generated positive operating cash flow of \$35.0 million compared to \$53.4 million in 2023. Cash flow from operating activities was lower in 2024 due to higher working capital needs, which more than offset higher profitability in 2024.

Investing Activities

Capital expenditures were \$31.4 million in 2024 and \$28.2 million in 2023. These capital expenditures were primarily for growth initiatives, including information technology investments, across all three of our segments, and to maintain existing operations.

In 2024 and 2023, we sold assets and received aggregate proceeds of \$11.5 million and \$2.0 million, respectively. See Note 5 to the consolidated financial statements included elsewhere herein for additional information. We spent \$11.0 million for the acquisition of EMA. Additionally, in 2023, we received \$15.5 million in connection with the sale of our Aluminum Products business.

Financing Activities

Cash provided by financing activities in 2024 included debt repayments of \$16.0 million, payments related to prior acquisitions of \$3.0 million, dividends to shareholders and noncontrolling interest partners totaling \$7.2 million, and payments of withholding taxes on share awards of \$2.6 million. On June 3, 2024, the Company entered into an agreement providing for an at-the-market ("ATM") program authorizing the sale of up to \$50.0 million of the Company's common stock. During the year ended December 31, 2024, the Company sold 550,981 shares of common stock for aggregate net proceeds of \$15.9 million under the ATM program. The Company has \$34.1 million remaining under the ATM program. In addition, in the third quarter of 2024, the Company sold 341,997 shares of common stock in a public offering to its pension plan for \$10.0 million; and 148,612 shares of common stock, for proceeds of \$4.5 million, in a private offering to Matthew V. Crawford, our Chairman of the Board, Chief Executive Officer and President, and to Crawford Capital Enterprises, LLC, an entity controlled by Edward F. Crawford, one of our Board members.

Cash used by financing activities in 2023 included debt repayments of \$24.3 million, payments related to prior acquisitions of \$2.9 million, dividends to shareholders and noncontrolling interest partners totaling \$7.4 million, and payments of withholding taxes on share awards of \$2.0 million.

Liquidity

Overall, we were able to pay down debt and fund capital expenditures in 2024 using cash flows from operations, cash proceeds from asset sales and proceeds from common stock issuances. See Note 9 to the consolidated financial statements included elsewhere herein for further discussion of our financing arrangements.

The following table summarizes our indicators of liquidity:

	2024	2023
	(Dollars in millions)	
Cash and cash equivalents	\$ 53.1	\$ 54.8
Gross debt (excluding unamortized debt issuance costs)	\$ 628.7	\$ 645.7
Working capital (excluding cash and cash equivalents)	\$ 421.8	\$ 406.0
Net debt as a % of capitalization	60%	64%

Our liquidity needs are primarily for working capital and capital expenditures. Our primary sources of liquidity have been cash provided by operations, funds available from existing bank credit arrangements and the sale of our debt securities. Our existing financial resources, including working capital, available bank borrowing arrangements and anticipated cash from operations, are

expected to be adequate to meet anticipated cash requirements for at least the next twelve months and for the foreseeable future thereafter, including but not limited to our ability to maintain current operations and fund capital expenditure requirements, service our debt and pay dividends.

As of December 31, 2024, we had \$248.6 million outstanding under the revolving credit facility, and total liquidity of \$198.2 million, which included cash and cash equivalents of \$53.1 million and \$145.1 million of unused borrowing availability under our credit arrangements.

The Company had cash and cash equivalents held by foreign subsidiaries of \$43.4 million at December 31, 2024 and \$44.6 million at December 31, 2023. We do not expect restrictions on repatriation of cash held outside the U.S. to have a material effect on our overall liquidity, financial condition or results of operations for the foreseeable future.

Senior Notes

In April 2017, Park-Ohio Industries, Inc. (“Park-Ohio”), the operating subsidiary of Park-Ohio Holdings Corp., completed the sale, in a private placement, of \$350.0 million aggregate principal amount of 6.625% Senior Notes due 2027 (the “Notes”). The net proceeds from the issuance of the Notes were used to repay in full our previously outstanding 8.125% Senior Notes due 2021 and our outstanding term loan, and to repay a portion of the borrowings then outstanding under our revolving credit facility.

Credit Agreement

In September 2023, Park-Ohio amended its Seventh Amended and Restated Credit Agreement (the “Credit Agreement”). The Credit Agreement provides for a revolving credit facility in the amount of \$405.0 million, including a \$40.0 million Canadian revolving subcommitment and a European revolving subcommitment in the amount of \$30.0 million. Pursuant to the Credit Agreement, Park-Ohio has the option to increase the availability under the revolving credit facility by an aggregate incremental amount up to \$70.0 million. The Credit Agreement matures on January 14, 2027.

Finance Leases

As of December 31, 2024, the Company had finance leases totaling \$17.0 million.

Covenants

The future availability of bank borrowings under the revolving credit facility provided by the Credit Agreement is based on (1) our calculated availability under the Credit Agreement and (2) if such calculated availability decreases below \$50.625 million, our ability to meet a debt service ratio covenant. If our calculated availability is less than \$50.625 million, our debt service coverage ratio must be greater than 1.0. At December 31, 2024, our calculated availability under the Credit Agreement was \$133.5 million; therefore, the debt service ratio covenant did not apply.

Failure to maintain calculated availability of at least \$50.625 million and meet the debt service ratio covenant could materially impact the availability and interest rate of future borrowings. Our debt service coverage ratio could be materially impacted by negative economic trends, including inflation and supply chain disruptions. To make certain permitted payments as defined under the Credit Agreement, including but not limited to acquisitions and dividends, we must meet defined availability thresholds ranging from \$37.5 million to \$50.625 million, and a defined debt service coverage ratio of 1.15.

As our calculated availability under the Credit Agreement was above \$50.625 million, we were also in compliance with the other covenants contained in the revolving credit facility as of December 31, 2024. While we expect to remain in compliance throughout 2025, declines in sales volumes in the future could adversely impact our ability to remain in compliance with certain of these financial covenants. Additionally, to the extent our customers are adversely affected by declines in the economy in general, they may be unable to pay their accounts payable to us on a timely basis or at all, which could make our accounts receivable ineligible for purposes of the revolving credit facility and could reduce our borrowing base and our ability to borrow under such facility.

Dividends

The Company paid dividends to shareholders of \$6.7 million during 2024. On January 24, 2025, the Company’s Board of Directors declared a quarterly dividend of \$0.125 per common share. The dividend was paid on February 21, 2025, to shareholders of record as of the close of business on February 7, 2025 and resulted in cash payments of \$1.8 million. Although we currently intend to pay a quarterly dividend on an ongoing basis, all future dividend declarations will be at the discretion of our Board of Directors and dependent upon then-existing conditions, including our operating results and financial condition, capital requirements, contractual restrictions, business prospects and other factors that our Board of Directors may deem relevant.

Contractual and Other Obligations and Commitments

Our material cash commitments from known contractual and other obligations primarily consist of obligations for long-term debt and related interest, leases for properties and equipment and purchase obligations as part of normal operations. See Note 9 to the consolidated financial statements included elsewhere herein for additional information regarding scheduled maturities of our long-term debt. See Note 13 to the consolidated financial statements included elsewhere herein for additional information on leases. See Note 14 to the consolidated financial statements included elsewhere herein for additional information of future pension and postretirement benefit obligations.

Interest payable associated with our 6.625% Senior Notes due 2027 is \$23.2 million due in the twelve months following December 31, 2024 and \$29.9 million due thereafter.

As of December 31, 2024, our undiscounted purchase obligations were \$205.5 million due in the next twelve months and \$3.2 million due thereafter under purchase orders and “take or pay” arrangements. These purchase obligations include all enforceable, legally binding agreements to purchase goods or services that specify all significant terms, regardless of the duration of the agreement, and exclude agreements with variable terms for which we are unable to estimate the minimum amounts.

Off-Balance Sheet Arrangements

We do not have off-balance sheet arrangements, financing or other relationships with unconsolidated entities or other persons, other than the letters of credit disclosed in Note 9 to the consolidated financial statements, included elsewhere herein.

Critical Accounting Policies and Estimates

Preparation of financial statements in conformity with U.S. generally accepted accounting principles requires management to make certain estimates and assumptions which affect amounts reported in our consolidated financial statements. On an ongoing basis, we evaluate the accounting policies and estimates that are used to prepare financial statements. Management has made their best estimates and judgments of certain amounts included in the financial statements, giving due consideration to materiality. We do not believe that there is great likelihood that materially different amounts would be reported under different conditions or using different assumptions related to the accounting policies described below. However, application of these accounting policies involves the exercise of judgment and use of assumptions as to future uncertainties and, as a result, actual results could differ from these estimates.

Certain accounting policies that require significant management estimates and are deemed critical to our results of operations or financial position are discussed below. On a regular basis, critical accounting policies are reviewed with the Audit Committee of the Board of Directors.

Revenue Recognition: We recognize revenue, other than from long-term contracts, when our obligations under the contract terms are satisfied and control transfers to the customer, typically upon shipment. Revenue from certain long-term contracts is accounted for over time, when products are manufactured or services are performed, as control transfers under these arrangements. We follow the input method since reasonably reliable estimates of revenue and costs of a contract can be made. See Note 2 of the consolidated financial statements included elsewhere herein for additional disclosures on revenue.

Allowance for Obsolete and Slow-Moving Inventory: Inventories are valued using first-in, first-out or the weighted-average inventory method; stated at the lower of cost or net realizable value; and have been reduced by an allowance for obsolete and slow-moving inventories. The estimated allowance is based on management’s review of inventories on hand with minimal sales activity, which is compared to estimated future usage and sales. Inventories identified by management as slow-moving or obsolete are reserved for based on estimated selling prices less disposal costs. Though we consider these allowances adequate and proper, changes in economic conditions in specific markets in which we operate could have a material effect on allowances required.

Business Combinations: Business combinations are accounted for using the purchase method of accounting under Accounting Standards Codification (“ASC”) 805, “Business Combinations.” This method requires the Company to record assets and liabilities of the business acquired at their estimated fair values as of the acquisition date. Any excess of the cost of the acquisition over the fair value of the net assets acquired is recorded as goodwill. The Company uses valuation specialists to perform appraisals and assist in the determination of the fair values of the assets acquired and liabilities assumed. These valuations require management to make estimates and assumptions including discount rates, rates of return on assets, long-term sales growth rates, and royalty rates.

Goodwill and Indefinite-Lived Intangible Assets: As required by ASC 350, “Intangibles - Goodwill and Other” (“ASC 350”), management performs impairment testing of goodwill at least annually, as of October 1 of each year, or more frequently if impairment indicators arise. Management tests goodwill for impairment at the reporting unit level. A reporting unit is an operating segment pursuant to ASC 280, “Segment Reporting”, or one level below the operating segment (component level) as determined by the availability of discrete financial information that is regularly reviewed by operating segment management. Our reporting units have been identified at the component level. For 2024, 2023 and 2022, we performed quantitative testing for each reporting unit with a goodwill balance.

Our annual goodwill impairment analysis utilizes a quantitative approach comparing the carrying amount of the reporting unit to its estimated fair value. To the extent that the carrying value of the reporting unit exceeds its estimated fair value, an impairment charge is recorded. In applying the quantitative approach, we use the discounted cash flow method, a form of income approach, and the guideline public company method, a form of the market approach to estimate the fair value of the reporting unit. The income approach uses a number of factors, including future business plans, actual and forecasted operating results, and market data. The significant assumptions employed under this method include the weighted average cost of capital (“WACC”); revenue growth rates; and operating margins used to project future cash flows for a reporting unit. The WACCs utilized reflect market-based estimates of capital costs and discount rates adjusted for management’s assessment of a market participant’s view with respect to other risks associated with the projected cash flows of the individual reporting unit. Our estimates are based upon assumptions we believe to be reasonable, but which by nature are uncertain and unpredictable. We believe we incorporate ample sensitivity ranges into our analysis of goodwill impairment testing for a reporting unit, such that actual experience would need to be materially out of the range of expected assumptions in order for an impairment to remain undetected. We validate our estimates of fair value under the income approach by considering the implied control premium and conclude whether that premium is reasonable based on recent market transactions.

The results of testing as of October 1, 2024, 2023 and 2022 for all reporting units confirmed that the estimated fair values exceeded carrying values, and no impairment existed as of those dates. Based on our 2024 annual impairment test, we determined that the fair value of our Forged and Machined Products Group reporting unit, which is included in our Engineered Products segment, exceeded its carrying value by approximately 10% as of the testing date. As such, we concluded that the goodwill of this reporting unit of \$8.7 million as of that date was not impaired. This reporting unit was negatively impacted by equipment downtime and labor challenges, and while we believe that the current assumptions and estimates used in our goodwill testing are reasonable, supportable and appropriate, there can be no assurance that such assumptions and estimates will prove to be accurate predictions of future performance.

Additionally, we test all indefinite-lived intangible assets for impairment at least annually, as of October 1 of each year, or more frequently if impairment indicators arise. In 2024, 2023 and 2022, we utilized a quantitative approach using the royalty relief method. The significant assumptions employed under this method include discount rates, revenue growth rates, including assumed terminal growth rates, and royalty rates. The discount rates utilized reflect market-based estimates of capital costs and discount rates adjusted for management’s assessment of a market participant’s view with respect to other risks associated with the projected cash flows of the individual reporting unit. Our estimates are based upon assumptions we believe to be reasonable, but which by nature are uncertain and unpredictable. We believe we incorporate ample sensitivity ranges into our analysis of intangible impairment testing, such that actual experience would need to be materially out of the range of expected assumptions in order for an impairment to remain undetected.

The results of testing as of October 1, 2024, 2023 and 2022 for all reporting units confirmed that the estimated fair value exceeded carrying values, and no impairment existed as of those dates.

See Notes 7 and 8 of the consolidated financial statements included elsewhere herein for additional disclosure on goodwill and indefinite-lived intangibles.

Income Taxes: In accordance with ASC 740, “Income Taxes” (“ASC 740”), we account for income taxes under the asset and liability method, whereby deferred tax assets and liabilities are determined based on temporary differences between the financial reporting and the tax bases of assets and liabilities and are measured using the currently enacted tax rates. Specifically, we measure gross deferred tax assets for deductible temporary differences and carryforwards, such as operating losses and tax credits, using the applicable enacted tax rates and apply the more likely than not measurement criterion.

In determining if it is more likely than not that all or some portion of a deferred tax asset will be realized, we consider the following factors: future reversals of existing taxable temporary differences; taxable income in prior years if carryback is permitted under the tax law; tax planning strategies that could accelerate taxable income; and future taxable income. Based on these factors, when we have determined that the realizability of certain domestic and foreign deferred tax assets is more likely than not to be realized, a valuation allowance has been established.

Further, at each interim reporting period, we estimate an effective income tax rate that is expected to be applicable for the full year. Significant judgment is involved regarding the application of global income tax laws and regulations and when projecting the jurisdictional mix of income. Additionally, interpretation of tax laws, court decisions or other guidance provided by taxing authorities influences our estimate of the effective income tax rates. As a result, our actual annual effective income tax rates and related income tax liabilities may differ materially from our interim estimated effective tax rates and related income tax liabilities. Any resulting differences are recorded in the period they become known.

Pension Plans: We and our subsidiaries have pension plans, principally noncontributory defined benefit or noncontributory defined contribution plans covering substantially all employees. The measurement of liabilities related to these plans is based on management’s assumptions related to future events, including interest rates, return on pension plan assets, rate of compensation increases, and health care cost trends. Pension plan asset performance in the future will directly impact our net income. We have evaluated our pension assumptions, considering current trends in interest rates and market conditions and believe our assumptions are appropriate.

We consult with our actuaries at least annually when reviewing and selecting the discount rates to be used. The discount rates used by the Company are based on yields of various corporate and governmental bond indices with actual maturity dates that approximate the estimated benefit payment streams of the related pension plans. The discount rates are also reviewed in comparison with current benchmark indices, economic market conditions and the movement in the benchmark yield since the previous fiscal year. The liability weighted-average discount rate for the defined benefit pension plan is 5.55% for 2024, compared with 5.14% in 2023. For the other postretirement benefit plan, the rate is 5.43% for 2024 and 5.06% for 2023. This rate represents the interest rates generally available in the United States, which is the Company's only country with other postretirement benefit liabilities. Another assumption that affects the Company's pension expense is the expected long-term rate of return on assets. The Company's pension plans are funded. The weighted-average expected long-term rate of return on assets assumption is 7.50% and 7.75% for 2024 and 2023, respectively. In determining the expected return on plan assets, we consider both historical performance and an estimate of future long-term rates of return on assets similar to those in our plan. We consult with and consider opinions of financial and actuarial experts in developing appropriate return assumptions.

Legal Contingencies: We are involved in a variety of claims, suits, investigations and administrative proceedings with respect to commercial, premises liability, product liability, employment, personal injury and environmental matters arising from the ordinary course of business. We accrue reserves for legal contingencies, on an undiscounted basis, when it is probable that we have incurred a liability, and we can reasonably estimate an amount. When a single amount cannot be reasonably estimated, but the cost can be estimated within a range and no amount within the range is a better estimate than any other amount, we accrue the minimum amount in the range. Based upon facts and information currently available, we believe the amounts reserved are adequate for such pending matters. We monitor the development of legal proceedings on a regular basis and will adjust our reserves when, and to the extent, additional information becomes available.

Environmental

We have been identified as a potentially responsible party at third-party sites under the Comprehensive Environmental Response, Compensation and Liability Act of 1980, as amended, or comparable state laws, which provide for strict and, under certain circumstances, joint and several liability. We are participating in the cost of certain clean-up efforts at several of these sites. However, our share of such costs has not been material and based on available information, management does not expect our exposure at any of these locations to have a material adverse effect on our results of operations, liquidity or financial condition.

We have been named as one of many defendants in a number of asbestos-related personal injury lawsuits. Our cost of defending such lawsuits has not been material to date and, based upon available information, management does not expect our future costs for asbestos-related lawsuits to have a material adverse effect on our results of operations, liquidity or financial condition. We caution, however, that inherent in management's estimates of our exposure are expected trends in claims severity, frequency and other factors that may materially vary as claims are filed and settled or otherwise resolved.

Seasonality; Variability of Operating Results

The timing of orders placed by our customers has varied with, among other factors, orders for customers' finished goods, customer production schedules, competitive conditions and general economic conditions. The variability of the level and timing of orders has, from time to time, resulted in significant periodic and quarterly fluctuations in the operations of our business units. Such variability is particularly evident in the industrial equipment business unit included in the Engineered Products segment, which typically ships a few large systems per year.

Forward-Looking Statements

This Annual Report on Form 10-K contains certain statements that are "forward-looking statements" within the meaning of Section 27A of the Securities Act and Section 21E of the Exchange Act. The words "believes", "anticipates", "plans", "expects", "intends", "estimates" and similar expressions are intended to identify forward-looking statements.

These forward-looking statements, including statements regarding future performance of the Company, that are subject to known and unknown risks, uncertainties and other factors that may cause our actual results, performance and achievements, or industry results, to be materially different from any future results, performance or achievements expressed or implied by such forward-looking statements. These factors that could cause actual results to differ materially from expectations include, but are not limited to, the following: the impact supply chain and logistic issues have on our business, results of operations, financial position and liquidity; our substantial indebtedness; the uncertainty of the global economic environment; general business conditions and competitive factors, including pricing pressures and product innovation; demand for our products and services; the impact of labor disturbances affecting our customers; raw material availability and pricing; fluctuations in energy costs; component part availability and pricing; changes in our relationships with customers and suppliers; the financial condition of our customers, including the impact of any bankruptcies; our ability to successfully integrate recent and future acquisitions into existing operations; the amounts and timing, if any, of purchases of

our common stock; changes in general economic conditions such as inflation rates, interest rates, tax rates, unemployment rates, higher labor and healthcare costs, recessions and changing government policies, laws and regulations, including those related to the current global uncertainties and crises, such as tariffs and surcharges; adverse impacts to us, our suppliers and customers from acts of terrorism or hostilities, including the conflicts between Russia and Ukraine and in the Middle East, or political unrest, including the rising tension between China and the United States; public health issues, including the outbreak of infectious diseases and any impact on our facilities and operations and our customers and suppliers; our ability to meet various covenants, including financial covenants, contained in the agreements governing our indebtedness; disruptions, uncertainties or volatility in the credit markets that may limit our access to capital; potential disruption due to a partial or complete reconfiguration of the European Union; increasingly stringent domestic and foreign governmental regulations, including those affecting the environment or import and export controls and other trade barriers; inherent uncertainties involved in assessing our potential liability for environmental remediation-related activities; the outcome of pending and future litigation and other claims and disputes with customers; our dependence on the automotive and heavy-duty truck industries, which are highly cyclical; the dependence of the automotive industry on consumer spending; our ability to negotiate contracts with labor unions; our dependence on key management; our dependence on information systems; our ability to continue to pay cash dividends, and the timing and amount of any such dividends; and the other factors we describe under “Item 1A. Risk Factors” included in this Annual Report on Form 10-K. Any forward-looking statement speaks only as of the date on which such statement is made, and we undertake no obligation to update any forward-looking statement, whether as a result of new information, future events or otherwise, except as required by law. In light of these and other uncertainties, the inclusion of a forward-looking statement herein should not be regarded as a representation by us that our plans and objectives will be achieved.

Item 7A. *Quantitative and Qualitative Disclosures About Market Risk*

We are exposed to market risk, including changes in interest rates. As of December 31, 2024, we are subject to interest rate risk on borrowings under the floating rate revolving credit facility provided by our Credit Agreement, which consisted of borrowings of \$248.6 million at December 31, 2024. A 100-basis point increase in the interest rate would have resulted in an increase in interest expense on these borrowings of approximately \$2.5 million for the year ended December 31, 2024.

We are exposed to changes in foreign currency exchange rates. Our foreign subsidiaries generally conduct business in local currencies. We face translation risks related to the changes in foreign currency exchange rates. Amounts invested in our foreign operations are translated in U.S. dollars at the exchange rates in effect at the balance sheet date. The resulting translation adjustments are recorded as a component of Accumulated other comprehensive loss in the Shareholders’ equity section of the accompanying Consolidated Balance Sheets. Sales and expenses at our foreign operations are translated into U.S. dollars at the applicable monthly average exchange rates. Therefore, changes in exchange rates may either positively or negatively affect our net sales and expenses from foreign operations as expressed in U.S. dollars.

Our largest exposures to commodity prices relate to metal and rubber compounds, which have fluctuated widely in recent years. In 2024 and 2023, we entered into agreements to hedge foreign currency. These agreements did not have a material impact on the results of the Company. We have no other commodity swap agreements or forward purchase contracts.

INDEX TO CONSOLIDATED FINANCIAL STATEMENTS AND SUPPLEMENTARY FINANCIAL DATA

	<u>Page</u>
Report of Independent Registered Public Accounting Firm (PCAOB ID: 42)	27
Report of Independent Registered Public Accounting Firm (PCAOB ID 42)	29
Consolidated Balance Sheets — December 31, 2024 and 2023	30
Consolidated Statements of Operations — Years Ended December 31, 2024, 2023 and 2022	31
Consolidated Statements of Comprehensive Income (Loss) — Years Ended December 31, 2024, 2023 and 2022	32
Consolidated Statements of Shareholders’ Equity — Years Ended December 31, 2024, 2023 and 2022	33
Consolidated Statements of Cash Flows — Years Ended December 31, 2024, 2023 and 2022	34
Notes to Consolidated Financial Statements	35
Supplementary Financial Data	68

REPORT OF INDEPENDENT REGISTERED PUBLIC ACCOUNTING FIRM

To the Shareholders and the Board of Directors of Park-Ohio Holdings Corp.

Opinion on the Financial Statements

We have audited the accompanying consolidated balance sheets of Park-Ohio Holdings Corp. and Subsidiaries (the Company) as of December 31, 2024 and 2023, the related consolidated statements of operations, comprehensive income (loss), shareholders' equity and cash flows for each of the three years in the period ended December 31, 2024, and the related notes and financial statement schedule listed in the Index at Item 15(a)(2) (collectively referred to as the "consolidated financial statements"). In our opinion, the consolidated financial statements present fairly, in all material respects, the financial position of the Company at December 31, 2024 and 2023, and the results of its operations and its cash flows for each of the three years in the period ended December 31, 2024, in conformity with U.S. generally accepted accounting principles.

We also have audited, in accordance with the standards of the Public Company Accounting Oversight Board (United States) (PCAOB), the Company's internal control over financial reporting as of December 31, 2024, based on criteria established in Internal Control—Integrated Framework issued by the Committee of Sponsoring Organizations of the Treadway Commission (2013 framework), and our report dated March 6, 2025 expressed an unqualified opinion thereon.

Basis for Opinion

These financial statements are the responsibility of the Company's management. Our responsibility is to express an opinion on the Company's financial statements based on our audits. We are a public accounting firm registered with the PCAOB and are required to be independent with respect to the Company in accordance with the U.S. federal securities laws and the applicable rules and regulations of the Securities and Exchange Commission and the PCAOB.

We conducted our audits in accordance with the standards of the PCAOB. Those standards require that we plan and perform the audit to obtain reasonable assurance about whether the financial statements are free of material misstatement, whether due to error or fraud. Our audits included performing procedures to assess the risks of material misstatement of the financial statements, whether due to error or fraud, and performing procedures that respond to those risks. Such procedures included examining, on a test basis, evidence regarding the amounts and disclosures in the financial statements. Our audits also included evaluating the accounting principles used and significant estimates made by management, as well as evaluating the overall presentation of the financial statements. We believe that our audits provide a reasonable basis for our opinion.

Critical Audit Matter

The critical audit matter communicated below is a matter arising from the current period audit of the financial statements that was communicated or required to be communicated to the audit committee and that: (1) relates to accounts or disclosures that are material to the financial statements and (2) involved our especially challenging, subjective or complex judgments. The communication of the critical audit matter does not alter in any way our opinion on the consolidated financial statements, taken as a whole, and we are not, by communicating the critical audit matter below, providing a separate opinion on the critical audit matter or on the account or disclosure to which it relates.

Quantitative Impairment Assessment of Goodwill

Description of the Matter

At December 31, 2024, the Company's goodwill was \$111.7 million. As discussed in Note 1 to the consolidated financial statements, goodwill is tested for impairment at least annually at the reporting unit level or more frequently if impairment indicators arise. Goodwill is tested at the reporting unit level for impairment utilizing a combination of valuation techniques including the discounted cash flow method, a form of the income approach, and the guideline public company method, a form of the market approach.

Auditing management's quantitative goodwill impairment assessment for certain of its reporting units was complex and highly judgmental due to the significant estimation required to determine the fair value of the reporting units. In particular, the fair value estimate was sensitive to significant assumptions, such as revenue growth rates, operating margins and weighted average cost of capital (WACC), which are impacted by expectations of future market or economic conditions.

How We Addressed the Matter in Our Audit

We obtained an understanding, evaluated the design and tested the operating effectiveness of controls over the Company's goodwill impairment process. This included controls over management's review of the significant assumptions underlying the fair value determination described above.

To test the estimated fair value of the Company's reporting units, we performed audit procedures that included, among others, assessing methodologies and testing the significant assumptions described above and the underlying data used by the Company in its analysis. For example, we compared the significant assumptions used by management to current industry and economic trends and to historical results. We assessed the historical accuracy of management's estimates and performed sensitivity analyses of significant assumptions to evaluate the changes in the fair value of the reporting units that would result from changes in the assumptions. We also involved our specialists to review the methodology, and certain assumptions such as the WACC. In addition, we tested management's reconciliation of the fair value of the reporting units to the market capitalization of the Company.

/s/ Ernst & Young LLP

We have served as the Company's auditor since 1967.

Cleveland, Ohio
March 6, 2025

REPORT OF INDEPENDENT REGISTERED PUBLIC ACCOUNTING FIRM

To the Shareholders and the Board of Directors of Park-Ohio Holdings Corp.

Opinion on Internal Control Over Financial Reporting

We have audited Park-Ohio Holdings Corp. and Subsidiaries' internal control over financial reporting as of December 31, 2024, based on criteria established in Internal Control—Integrated Framework issued by the Committee of Sponsoring Organizations of the Treadway Commission (2013 framework) (the COSO criteria). In our opinion, Park-Ohio Holdings Corp. and Subsidiaries (the Company) maintained, in all material respects, effective internal control over financial reporting as of December 31, 2024, based on the COSO criteria.

As indicated in the accompanying Management's Report on Internal Control over Financial Reporting, management's assessment of and conclusion on the effectiveness of internal control over financial reporting did not include the internal controls of EMA Indutec GmbH ("EMA"), which is included in the 2024 consolidated financial statements of the Company and constituted less than 3% of total assets as of December 31, 2024 and less than 2% of total revenues for the year then ended. Our audit of internal control over financial reporting of the Company also did not include an evaluation of the internal control over financial reporting of EMA.

We also have audited, in accordance with the standards of the Public Company Accounting Oversight Board (United States) (PCAOB), the consolidated balance sheets of the Company as of December 31, 2024 and 2023, the related consolidated statements of operations, comprehensive income (loss), shareholders' equity and cash flows for each of the three years in the period ended December 31, 2024, and the related notes and financial statement schedule listed in the Index at Item 15(a)(2) and our report dated March 6, 2025 expressed an unqualified opinion thereon.

Basis for Opinion

The Company's management is responsible for maintaining effective internal control over financial reporting and for its assessment of the effectiveness of internal control over financial reporting included in the accompanying Management's Report on Internal Control over Financial Reporting. Our responsibility is to express an opinion on the Company's internal control over financial reporting based on our audit. We are a public accounting firm registered with the PCAOB and are required to be independent with respect to the Company in accordance with the U.S. federal securities laws and the applicable rules and regulations of the Securities and Exchange Commission and the PCAOB.

We conducted our audit in accordance with the standards of the PCAOB. Those standards require that we plan and perform the audit to obtain reasonable assurance about whether effective internal control over financial reporting was maintained in all material respects.

Our audit included obtaining an understanding of internal control over financial reporting, assessing the risk that a material weakness exists, testing and evaluating the design and operating effectiveness of internal control based on the assessed risk, and performing such other procedures as we considered necessary in the circumstances. We believe that our audit provides a reasonable basis for our opinion.

Definition and Limitations of Internal Control Over Financial Reporting

A company's internal control over financial reporting is a process designed to provide reasonable assurance regarding the reliability of financial reporting and the preparation of financial statements for external purposes in accordance with generally accepted accounting principles. A company's internal control over financial reporting includes those policies and procedures that (1) pertain to the maintenance of records that, in reasonable detail, accurately and fairly reflect the transactions and dispositions of the assets of the company; (2) provide reasonable assurance that transactions are recorded as necessary to permit preparation of financial statements in accordance with generally accepted accounting principles, and that receipts and expenditures of the company are being made only in accordance with authorizations of management and directors of the company; and (3) provide reasonable assurance regarding prevention or timely detection of unauthorized acquisition, use, or disposition of the company's assets that could have a material effect on the financial statements.

Because of its inherent limitations, internal control over financial reporting may not prevent or detect misstatements. Also, projections of any evaluation of effectiveness to future periods are subject to the risk that controls may become inadequate because of changes in conditions, or that the degree of compliance with the policies or procedures may deteriorate.

/s/ Ernst & Young LLP

Cleveland, Ohio
March 6, 2025

PARK-OHIO HOLDINGS CORP. AND SUBSIDIARIES

CONSOLIDATED BALANCE SHEETS

	December 31, 2024	December 31, 2023
	(In millions, except share data)	
ASSETS		
Current assets:		
Cash and cash equivalents	\$ 53.1	\$ 54.8
Accounts receivable, net	249.5	263.3
Inventories, net	422.9	411.1
Other current assets	110.5	95.2
Total current assets	836.0	824.4
Property, plant and equipment, net	182.9	184.9
Operating lease right-of-use assets	40.3	44.7
Goodwill	111.7	110.2
Intangible assets, net	71.9	73.3
Pension assets	85.3	75.1
Other long-term assets	37.0	28.1
Total assets	\$ 1,365.1	\$ 1,340.7
LIABILITIES AND SHAREHOLDERS' EQUITY		
Current liabilities:		
Trade accounts payable	\$ 194.8	\$ 204.0
Current portion of long-term debt and short-term debt	8.4	9.4
Current portion of operating lease liabilities	10.7	10.6
Accrued employee compensation	35.7	31.8
Other accrued expenses	111.5	107.8
Total current liabilities	361.1	363.6
Long-term liabilities, less current portion:		
Long-term debt	618.3	633.4
Long-term operating lease liabilities	29.8	34.4
Deferred income taxes	11.7	9.0
Other long-term liabilities	7.1	10.4
Total long-term liabilities	666.9	687.2
Park-Ohio Holdings Corp. and Subsidiaries shareholders' equity:		
Capital stock, par value \$1 a share		
Serial preferred stock: Authorized — 632,470 shares: Issued and outstanding — none	—	—
Common stock: Authorized - 40,000,000 shares; Issued - 18,292,490 shares in 2024 and 17,029,938 in 2023	18.3	17.0
Additional paid-in capital	190.6	155.9
Retained earnings	265.2	240.1
Treasury stock, at cost, 4,059,619 shares in 2024 and 3,958,966 shares in 2023	(91.5)	(88.9)
Accumulated other comprehensive loss	(51.8)	(43.7)
Total Park-Ohio Holdings Corp. and Subsidiaries shareholders' equity	330.8	280.4
Noncontrolling interests	6.3	9.5
Total equity	337.1	289.9
Total liabilities and shareholders' equity	\$ 1,365.1	\$ 1,340.7

The accompanying notes are an integral part of these consolidated financial statements.

PARK-OHIO HOLDINGS CORP. AND SUBSIDIARIES

CONSOLIDATED STATEMENTS OF OPERATIONS

	Year Ended December 31,		
	2024	2023	2022
	(In millions, except per share data)		
Net sales	\$ 1,656.2	\$ 1,659.7	\$ 1,492.9
Cost of sales	1,374.8	1,388.3	1,282.4
Selling, general and administrative expenses	187.4	181.5	162.2
Restructuring and other special charges	4.9	6.6	17.3
Gains on sales of assets, net	(2.5)	(0.8)	(2.4)
Other expense	5.0	—	—
Operating income	86.6	84.1	33.4
Other components of pension and other postretirement benefits income, net	5.2	2.5	11.1
Interest expense, net	(47.4)	(45.1)	(33.8)
Income from continuing operations before income taxes	44.4	41.5	10.7
Income tax (expense) benefit	(4.9)	(8.5)	0.7
Income from continuing operations	39.5	33.0	11.4
Loss (income) attributable to noncontrolling interest	2.7	1.0	(1.3)
Income from continuing operations attributable to ParkOhio common shareholders	42.2	34.0	10.1
Loss from discontinued operations, net of tax (Note 4)	(10.4)	(26.2)	(24.3)
Net income (loss) attributable to ParkOhio common shareholders	\$ 31.8	\$ 7.8	\$ (14.2)
Earnings (loss) per common share attributable to ParkOhio common shareholders:			
Basic:			
Continuing operations	\$ 3.27	\$ 2.76	\$ 0.83
Discontinued operations	(0.81)	(2.13)	(2.01)
Total	\$ 2.46	\$ 0.63	\$ (1.17)
Diluted:			
Continuing operations	\$ 3.19	\$ 2.72	\$ 0.83
Discontinued operations	(0.79)	(2.10)	(1.99)
Total	\$ 2.40	\$ 0.62	\$ (1.16)
Weighted-average shares used to compute earnings (loss) per share:			
Basic	12.9	12.3	12.1
Diluted	13.2	12.5	12.2

The accompanying notes are an integral part of these consolidated financial statements.

PARK-OHIO HOLDINGS CORP. AND SUBSIDIARIES

CONSOLIDATED STATEMENTS OF COMPREHENSIVE INCOME (LOSS)

	Year Ended December 31,		
	2024	2023	2022
	(In millions)		
Net income (loss) attributable to ParkOhio common shareholders before noncontrolling interest	\$ 29.1	\$ 6.8	\$ (12.9)
Other comprehensive (loss) income:			
Currency translation	(15.9)	7.7	(19.9)
Pensions and other postretirement benefits, net of tax	7.8	10.4	(22.7)
Total other comprehensive (loss) income	(8.1)	18.1	(42.6)
Total comprehensive income (loss), net of tax	21.0	24.9	(55.5)
Comprehensive loss (income) attributable to noncontrolling interest	2.7	1.0	(1.3)
Comprehensive income (loss) attributable to ParkOhio common shareholders	<u>\$ 23.7</u>	<u>\$ 25.9</u>	<u>\$ (56.8)</u>

The accompanying notes are an integral part of these consolidated financial statements.

PARK-OHIO HOLDINGS CORP. AND SUBSIDIARIES

CONSOLIDATED STATEMENTS OF SHAREHOLDERS' EQUITY

	Common Stock		Additional	Retained	Treasury	Accumulated	Noncontrolling	Total
	Shares	Amount	Paid-In	Earnings	Stock	Other	Interest	
	(In whole shares)		Capital			Comprehensive		
						(Loss) Income		
					(In millions)			
Balance at January 1, 2022	16,339,722	16.3	\$ 142.9	\$ 259.4	\$ (85.3)	\$ (19.2)	\$ 10.7	\$ 324.8
Comprehensive (loss) income	—	—	—	(14.2)	—	(42.6)	1.3	(55.5)
Stock-based compensation	—	—	7.2	—	—	—	—	7.2
Restricted stock awards issued	331,455	0.3	(0.3)	—	—	—	—	—
Restricted stock cancelled	(17,249)	—	—	—	—	—	—	—
Dividends	—	—	—	(6.4)	—	—	(0.6)	(7.0)
Payments of withholding taxes on share awards	—	—	—	—	(1.6)	—	—	(1.6)
Balance at December 31, 2022	16,653,928	16.6	149.8	238.8	(86.9)	(61.8)	11.4	267.9
Comprehensive income (loss)	—	—	—	7.8	—	18.1	(1.0)	24.9
Stock-based compensation	—	—	6.5	—	—	—	—	6.5
Restricted stock awards issued	386,983	0.4	(0.4)	—	—	—	—	—
Restricted stock cancelled	(10,973)	—	—	—	—	—	—	—
Dividends	—	—	—	(6.5)	—	—	(0.9)	(7.4)
Payments of withholding taxes on share awards	—	—	—	—	(2.0)	—	—	(2.0)
Balance at December 31, 2023	17,029,938	17.0	155.9	240.1	(88.9)	(43.7)	9.5	289.9
Comprehensive income (loss)	—	—	—	31.8	—	(8.1)	(2.7)	21.0
Stock-based compensation	—	—	5.6	—	—	—	—	5.6
Restricted stock awards issued	257,660	0.3	(0.3)	—	—	—	—	—
Restricted stock cancelled	(36,698)	—	—	—	—	—	—	—
Issuances of common stock	1,041,590	1.0	29.4	—	—	—	—	30.4
Dividends	—	—	—	(6.7)	—	—	(0.5)	(7.2)
Payments of withholding taxes on share awards	—	—	—	—	(2.6)	—	—	(2.6)
Balance at December 31, 2024	18,292,490	18.3	\$ 190.6	\$ 265.2	\$ (91.5)	\$ (51.8)	\$ 6.3	\$ 337.1

	Year Ended December 31,		
	2024	2023	2022
Cash dividends per common share	\$ 0.50	\$ 0.50	\$ 0.50

The accompanying notes are an integral part of these consolidated financial statements.

PARK-OHIO HOLDINGS CORP. AND SUBSIDIARIES

CONSOLIDATED STATEMENTS OF CASH FLOWS

	Year Ended December 31,		
	2024	2023	2022
	(In millions)		
OPERATING ACTIVITIES FROM CONTINUING OPERATIONS			
Income from continuing operations	\$ 39.5	\$ 33.0	\$ 11.4
Adjustments to reconcile income from continuing operations to net cash provided by (used in) operating activities from continuing operations:			
Depreciation and amortization	33.6	31.7	30.2
Stock-based compensation	5.6	6.5	7.2
Gains on sales of assets, net	(2.5)	(0.8)	(2.4)
Deferred income taxes	(14.6)	(7.2)	(8.3)
Changes in operating assets and liabilities:			
Accounts receivable	12.1	(14.1)	(23.2)
Inventories	(14.8)	(1.3)	(56.0)
Prepaid and other current assets	(14.1)	(1.2)	(11.1)
Accounts payable and accrued expenses	(2.7)	3.3	33.1
Other	(7.1)	3.5	(7.5)
Net cash provided by (used in) operating activities from continuing operations ..	<u>35.0</u>	<u>53.4</u>	<u>(26.6)</u>
INVESTING ACTIVITIES FROM CONTINUING OPERATIONS			
Purchases of property, plant and equipment	(31.4)	(28.2)	(26.9)
Proceeds from sales of assets	11.5	2.0	9.5
Proceeds from sale of discontinued operations	—	15.5	—
Business acquisitions, net of cash acquired	(11.0)	(1.2)	(23.3)
Net cash used in investing activities from continuing operations	<u>(30.9)</u>	<u>(11.9)</u>	<u>(40.7)</u>
FINANCING ACTIVITIES FROM CONTINUING OPERATIONS			
(Payments on) proceeds from revolving credit facility, net	(15.0)	(22.3)	64.8
Payments on term loans and other debt	(7.5)	(7.2)	(3.6)
Proceeds from other long-term debt	5.8	4.3	3.5
Proceeds from finance lease facilities, net	0.7	0.9	8.5
Net proceeds from common stock issuances	30.4	—	—
Proceeds from down payment for sale of discontinued operations	—	—	20.0
Payments related to prior acquisitions	(3.0)	(2.9)	—
Dividends	(7.2)	(7.4)	(7.0)
Payments of withholding taxes on share awards	(2.6)	(2.0)	(1.6)
Net cash provided by (used in) financing activities from continuing operations ..	<u>1.6</u>	<u>(36.6)</u>	<u>84.6</u>
DISCONTINUED OPERATIONS¹:			
Total used in operating activities	(5.2)	(2.9)	(1.0)
Total used in investing activities	—	(3.9)	(4.8)
Total used in financing activities	<u>—</u>	<u>(2.4)</u>	<u>(3.4)</u>
Decrease in cash and cash equivalents from discontinued operations	(5.2)	(9.2)	(9.2)
Effect of exchange rate changes on cash	(2.2)	0.9	(4.0)
(Decrease) increase in cash and cash equivalents	<u>(1.7)</u>	<u>(3.4)</u>	<u>4.1</u>
Cash and cash equivalents at beginning of year	54.8	58.2	54.1
Cash and cash equivalents at end of year	<u>\$ 53.1</u>	<u>\$ 54.8</u>	<u>\$ 58.2</u>
Income taxes paid, net	\$ 14.5	\$ 7.3	\$ 10.7
Interest paid	\$ 47.0	\$ 47.6	\$ 34.5

(1) - Our continuing operations exclude the results of our Aluminum Products business unit, which was sold on December 29, 2023 and presented in discontinued operations for all periods presented.

The accompanying notes are an integral part of these consolidated financial statements.

PARK-OHIO HOLDINGS CORP. AND SUBSIDIARIES
NOTES TO CONSOLIDATED FINANCIAL STATEMENTS

(Dollars in millions, except per share data.)

NOTE 1 — Summary of Significant Accounting Policies

Consolidation and Basis of Presentation: Park-Ohio Holdings Corp. (“ParkOhio,” “we” or the “Company”) is a diversified international company providing world-class customers with a supply chain management outsourcing service, capital equipment used on their production lines, and manufactured components used to assemble their products. The Company operates three reportable segments: Supply Technologies, Assembly Components and Engineered Products. The consolidated financial statements include the accounts of the Company and all of its majority-owned subsidiaries. All intercompany accounts and transactions have been eliminated in consolidation. The Company does not have off-balance sheet arrangements or financing with unconsolidated entities or other persons, other than the letters of credit disclosed in Note 9. The Company leases certain real properties owned by related parties as described in Note 13. Transactions with related parties are not material to the Company’s financial position, results of operations or cash flows.

Accounting Estimates: The preparation of financial statements in conformity with accounting principles generally accepted in the United States requires management to make estimates and assumptions that affect the reported amounts in the consolidated financial statements. Actual results could differ from those estimates.

Cash Equivalents: The Company considers all highly liquid investments with an original maturity of three months or less when purchased to be cash equivalents.

Accounts Receivable and Allowance for Doubtful Accounts: Accounts receivable are recorded at net realizable value and reduced by an allowance for amounts that may become uncollectible in the future. The allowance for doubtful accounts was \$3.9 million and \$3.6 million at December 31, 2024 and 2023, respectively. The Company’s policy is to measure expected credit losses on accounts receivable based on historical experience, current conditions and reasonable forecasts. During 2024 and 2023, we sold, without recourse, \$129.3 million and \$130.6 million, respectively, of accounts receivable to mitigate accounts receivable concentration risk and to increase working capital efficiency. Sales of accounts receivable are reflected as a reduction of accounts receivable in the Consolidated Balance Sheets, and the proceeds are included in cash flows from operating activities in the Consolidated Statements of Cash Flows. Expense in the amount of \$2.4 million in both 2024 and 2023 related to the discount on sale of accounts receivable is recorded in the Consolidated Statements of Operations.

Inventories: Inventories are valued using first-in, first-out or the weighted-average inventory method and stated at the lower of cost or net realizable value.

	December 31, 2024	December 31, 2023
<i>Major Classes of Inventories</i>		
Raw materials and supplies	\$ 108.8	\$ 107.6
Work in process	53.5	50.1
Finished goods	260.6	253.4
Inventories, net	<u>\$ 422.9</u>	<u>\$ 411.1</u>
<i>Other Inventory Items</i>		
Inventory reserves	\$ (42.7)	\$ (42.9)
Consigned inventory	<u>\$ 8.1</u>	<u>\$ 9.7</u>

Property, Plant and Equipment: Property, plant and equipment is carried at cost. Additions and improvements that extend the lives of assets are capitalized, and expenditures for repairs and maintenance are charged to operations as incurred. Depreciation of fixed assets, including amounts capitalized under finance leases, is computed by the straight-line method based on the estimated useful lives of the assets ranging from five to 40 years for buildings, and three to 20 years for machinery and equipment.

PARK-OHIO HOLDINGS CORP. AND SUBSIDIARIES

NOTES TO CONSOLIDATED FINANCIAL STATEMENTS — (Continued)

The following table summarizes property, plant and equipment:

	December 31, 2024	December 31, 2023
Land and land improvements	\$ 8.1	\$ 9.0
Buildings	54.1	63.9
Machinery and equipment	356.3	362.5
Leased property under finance leases	31.7	28.9
Total property, plant and equipment	450.2	464.3
Less: Accumulated depreciation	267.3	279.4
Property, plant and equipment, net	<u>\$ 182.9</u>	<u>\$ 184.9</u>

	Year Ended December 31,		
	2024	2023	2022
Depreciation expense	\$ 26.8	\$ 25.0	\$ 23.6

Goodwill and Indefinite-Lived Assets: In accordance with Accounting Standards Codification (“ASC”) 350, “Intangibles — Goodwill and Other” (“ASC 350”), goodwill and indefinite life intangible assets are not amortized but rather are tested annually for impairment as of October 1, or whenever events or changes in circumstances indicate there may be an indicator of impairment in accordance with ASC 350. Goodwill is tested for impairment at the reporting unit level and is based on the net assets of each reporting unit, including goodwill and intangible assets, compared to its fair value. Our reporting units have been identified one level below the operating segment level. The Company completed its annual goodwill and indefinite-lived intangibles impairment testing as of October 1 of each year, noting no impairment. To determine fair value for goodwill testing purposes, the Company uses an income approach, utilizing a discounted cash flow model based on forecasted cash flows and weighted average cost of capital, and a market multiple approach. To determine fair value for indefinite-lived intangibles testing, the Company uses a relief-of-royalty method.

See Notes 7 and 8 for additional disclosures about goodwill and indefinite-lived intangibles.

Impairment of Other Long-Lived Assets: Other long-lived assets, including operating lease right-of-use assets, are reviewed for impairment whenever events or changes in circumstances indicate the carrying amount may not be recoverable. Upon indications of impairment, assets and liabilities are grouped at the lowest level for which identifiable cash flows are largely independent of the cash flows of other assets and liabilities. The asset group would be considered impaired if the estimated future net undiscounted cash flows generated by the asset group are less than its carrying value. Impairment losses are measured by comparing the estimated fair value of the asset group to its carrying value.

Fair Values of Financial Instruments: Certain financial instruments are required to be recorded at fair value. The Company measures financial assets and liabilities at fair value in three levels of inputs. The three-tier fair value hierarchy, which prioritizes the inputs used in the valuation methodologies, is as follows:

Level 1 — Valuations based on quoted prices for identical assets and liabilities in active markets.

Level 2 — Valuations based on observable inputs other than quoted prices included in Level 1, such as quoted prices for similar assets and liabilities in active markets, quoted prices for identical or similar assets and liabilities in markets that are not active, or other inputs that are observable or can be corroborated by observable market data.

Level 3 — Valuations based on unobservable inputs reflecting our own assumptions, consistent with reasonably available assumptions made by other market participants. These valuations require significant judgment.

Changes in assumptions or estimation methods could affect the fair value estimates; however, we do not believe any such changes would have a material impact on our financial condition, results of operations or cash flows. The carrying value of cash and cash equivalents, accounts receivable and accounts payable approximate fair value at December 31, 2024 and 2023 because of the short-term nature of these instruments. The fair values of long-term debt and pension plan assets are disclosed in Note 9 and Note 14, respectively.

The Company has not changed its valuation techniques for measuring fair value during 2024, and there were no transfers between levels during the periods presented.

PARK-OHIO HOLDINGS CORP. AND SUBSIDIARIES

NOTES TO CONSOLIDATED FINANCIAL STATEMENTS — (Continued)

Pensions: We account for our pensions in accordance with ASC Topic 715, “Compensation — Retirement Benefits.” Net actuarial gains and losses are amortized to expense when they exceed the 10% accounting corridor, based on the greater of the plan assets or benefit obligations, over an average employee’s future service period. Refer to Note 14 for more information.

Income Taxes: The Company accounts for income taxes under the asset and liability method, whereby deferred tax assets and liabilities are determined based on temporary differences between the financial reporting and the tax bases of assets and liabilities and are measured using the current enacted tax rates. In determining these amounts, management determined the probability of realizing deferred tax assets, taking into consideration factors including historical operating results, cumulative earnings and losses, expectations of future earnings, taxable income and the extended period of time over which the postretirement benefits will be paid. As required by ASC 740, “Income Taxes” (“ASC 740”), the Company records valuation allowances if, based on the weight of available evidence, it is more likely than not that all or some portion of our deferred tax assets will not be realized.

We have elected to account for global intangible low-taxed income (“GILTI”) as a current period expense. The impact of GILTI for the years ended December 31, 2024, 2023 and 2022 was tax expense of \$1.5 million, \$2.4 million and \$1.8 million, respectively.

Revenue Recognition: The Company recognizes revenue, other than from long-term contracts within the Engineered Products segment, when its obligations under the contract terms are satisfied and control transfers to the customer, typically upon shipment. Revenue from certain long-term contracts is accounted for over time, as products are manufactured or services are performed, as control transfers over time under these arrangements. We follow this method since reasonably reliable estimates of revenue and costs of a contract can be made. See Note 2 for additional disclosures regarding revenue.

Cost of Sales: Cost of sales is primarily comprised of direct materials and supplies consumed in the manufacture of product, manufacturing labor, depreciation expense, direct overhead expense, and shipping and handling costs.

Concentration of Credit Risk: The Company sells its products to customers in diversified industries. The Company performs ongoing credit evaluations of its customers’ financial condition but does not require collateral to support customer receivables. The Company establishes an allowance for doubtful accounts based upon factors surrounding the credit risk of specific customers, historical trends, current conditions and reasonable forecasts. As of December 31, 2024 and 2023, the Company had uncollateralized receivables with five customers in the automotive industry, each with several locations, aggregating \$22.1 million and \$26.3 million, respectively, which represented approximately 9% and 10%, respectively, of the Company’s trade accounts receivable. During 2024 and 2023, sales to these customers amounted to approximately \$235.9 million and \$259.5 million, respectively, which represented approximately 14% and 16%, respectively, of the Company’s net sales.

Environmental: The Company expenses environmental costs related to existing conditions resulting from past or current operations and from which no current or future benefit is discernible. Costs that extend the life of the related property or mitigate or prevent future environmental contamination are capitalized. The Company records a liability when environmental assessments and/or remedial efforts are probable and can be reasonably estimated. The estimated liability of the Company is not reduced for possible recoveries from insurance carriers and is undiscounted.

Foreign Currency Translation: The functional currency of the Company’s subsidiaries outside the United States is the local currency. Financial statements are translated into U.S. dollars at year-end exchange rates for assets and liabilities and weighted-average exchange rates during the period for revenues and expenses. The resulting translation adjustments are recorded in Accumulated other comprehensive loss in the Consolidated Balance Sheets. Gains and losses resulting from foreign currency transactions, including intercompany transactions that are not considered long-term investments, are included in the Consolidated Statements of Operations.

Discontinued Operations: During the fourth quarter of 2022, we determined that our Aluminum Products business met the held-for-sale and discontinued operations accounting criteria. Accordingly, the Company has reported the held-for-sale assets and liabilities, the operating results and the cash flows of Aluminum Products in discontinued operations for all periods presented throughout this Annual Report on Form 10-K. On December 29, 2023, the Company sold this business to Angstrom Automotive Group (“Angstrom”) for approximately \$50 million in cash and promissory notes, plus the assumption of approximately \$3 million of financial lease obligations. Unless otherwise indicated, amounts and activity in this Annual Report are presented on a continuing operations basis. See Note 4, “Discontinued Operations,” for further information.

Warranties: The Company estimates the amount of warranty claims on sold products that may be incurred based on current and historical data. The actual warranty expense could differ from the estimates made by the Company based on product performance. The following table presents the changes in the Company’s product warranty liability:

PARK-OHIO HOLDINGS CORP. AND SUBSIDIARIES

NOTES TO CONSOLIDATED FINANCIAL STATEMENTS — (Continued)

	Year Ended December 31,		
	2024	2023	2022
Balance at January 1	\$ 5.5	\$ 5.2	\$ 7.2
Claims paid during the year	(1.8)	(2.1)	(2.3)
Warranty expense	1.4	2.2	1.0
Acquisition	0.6	—	—
Foreign currency translation	(0.4)	0.2	(0.7)
Balance at December 31	<u>\$ 5.3</u>	<u>\$ 5.5</u>	<u>\$ 5.2</u>

Weighted-Average Number of Shares Used in Computing Earnings (Loss) Per Share: The following table sets forth the weighted-average number of shares used in the computation of earnings (loss) per share:

	Year Ended December 31,		
	2024	2023	2022
	(In whole shares)		
Weighted average basic shares outstanding	12,902,490	12,295,999	12,091,712
Dilutive impact of employee stock awards	337,118	214,902	101,237
Weighted average diluted shares outstanding	<u>13,239,608</u>	<u>12,510,901</u>	<u>12,192,949</u>

Outstanding stock awards with exercise prices greater than the average price of the common shares are anti-dilutive and are not included in the computation of diluted earnings per share. For the years ended December 31, 2024, 2023 and 2022, the anti-dilutive shares were 0.0 million, 0.1 million and 0.2 million, respectively.

Accounting Standards Adopted

In November 2023, the FASB issued ASU No. 2023-07, Segment Reporting (Topic 280): Improvements to Reportable Segment Disclosures. This guidance requires additional annual and interim disclosures for reportable segments. This new standard did not affect the recognition, measurement or financial statement presentation. The Company adopted this standard as of December 31, 2024. Refer to Note 3 for the additional disclosures for our reportable segments.

Accounting Standards Not Yet Adopted

In December 2023, the FASB issued ASU No. 2023-09, Income Taxes (Topic 740): Improvements to Income Tax Disclosures. This guidance requires additional annual disclosures for income taxes. This new standard will not affect the recognition, measurement or financial statement presentation. The amendments are effective for fiscal years beginning after December 15, 2024. We are in the process of evaluating the impact of adopting this new guidance on our consolidated financial statement disclosures.

In November 2024, the FASB issued ASU No. 2024-03, Income Statement-Reporting Comprehensive Income-Expense Disaggregation Disclosures (Subtopic 220-40): Disaggregation of Income Statement Expenses. The guidance requires tabular footnote disclosure of certain operating expenses disaggregated into categories, such as employee compensation, depreciation, and intangible asset amortization, included within each interim and annual income statement's expense caption, as applicable. The effective date is for fiscal years beginning after December 15, 2026, and interim periods within fiscal years beginning after December 15, 2027. We are in the process of evaluating the impact of adopting this new guidance on our consolidated financial statement disclosures.

No other recently issued ASUs are expected to have a material impact on our results of operations, financial condition or liquidity.

NOTE 2 — Revenue

Substantially all of the Company's contracts have a single performance obligation to transfer products to or, in limited cases, perform services for the customer. Accordingly, the Company recognizes revenue when its obligations under the contract terms are satisfied and control transfers to the customer. Revenue is recognized at an amount that reflects the consideration the Company expects to receive in exchange for the good or service, including estimated provisions for rebates, discounts, returns and allowances. The Company sells its products both directly to customers, and in limited cases, through distributors, generally under agreements with payment terms between 30-90 days. The Company has no financing components.

PARK-OHIO HOLDINGS CORP. AND SUBSIDIARIES

NOTES TO CONSOLIDATED FINANCIAL STATEMENTS — (Continued)

The majority of the Company's revenue is derived from contracts (i) with an original contract length of one year or less, or (ii) for which it recognizes revenue at the amount at which it has the right to invoice as products or services are delivered. The Company has elected the practical expedient not to disclose the value of remaining performance obligations associated with these types of contracts.

The Company also has certain contracts which contain performance obligations that are immaterial in the context of the contract with the customer. The Company has elected the practical expedient not to assess whether these promised goods or services are performance obligations.

Supply Technologies provides our customers with Total Supply Management™, a proactive solutions approach that manages the efficiencies of every aspect of supplying production parts and materials to our customers' manufacturing floor, from strategic planning to program implementation. Within this segment, contracts routinely consist of a long-term agreement or master service agreement with quantity and pricing specified through individual purchase orders. Revenue is recognized at a point in time, which is the shipping point, as that is when control transfers to the customer.

Assembly Components designs, develops and manufactures highly efficient, high pressure direct fuel injection fuel rails and pipes; fuel filler pipes that route fuel from the gas cap to the gas tank; and flexible multi-layer plastic and rubber assemblies used to transport fuel from the vehicle's gas tank and then, at extreme high pressure, to the engine's fuel injector nozzles. Within this segment, contracts routinely consist of a long-term agreement or master service agreement with quantity and pricing specified through individual purchase orders. Revenue is recognized at a point in time, which is at the shipping point, as that is when control transfers to the customer.

Engineered Products operates a diverse group of niche manufacturing businesses that design and manufacture a broad range of highly-engineered products, including induction heating and melting systems, pipe threading systems and forged and machined products. Engineered Products also produces and provides services and spare parts for the equipment it manufactures. In this segment, revenue is recognized for certain revenue streams at a point in time, and over time for other revenue streams. For point in time arrangements, revenue is recognized at the shipping point, as that is when control transfers to the customer. For over time arrangements, revenue is recognized over the time during which products are manufactured or services are performed, as control transfers under these arrangements over a period of time. Over time arrangements represent 17% of the Company's total consolidated sales for the year ended December 31, 2024. The Company uses the input method to calculate the contract revenues to be recognized, which utilizes costs incurred to date in relation to total expected costs to satisfy the Company's performance obligation under the contract. Incurred costs represent work performed and therefore best depict the transfer of control to the customer.

For over time arrangements, contract liabilities relate to advances or deposits received from the Company's customers before revenue is recognized. These amounts, which totaled \$53.1 million and \$53.9 million at December 31, 2024 and December 31, 2023, respectively, are recorded as Other accrued expenses in the Consolidated Balance Sheets.

For over time arrangements, contract assets relate to revenue recognized in advance of billings to customers under long-term contracts accounted for under percentage of completion. These amounts, which totaled \$45.3 million and \$59.9 million at December 31, 2024 and December 31, 2023, respectively, are recorded as Other current assets in the Consolidated Balance Sheets.

The Company has elected to account for shipping and handling as activities to fulfill the promise to transfer its products. As such, shipping and handling fees billed to customers in a sales transaction are recorded in Net sales, and shipping and handling costs incurred are recorded in Cost of sales. The Company has elected to exclude from Net sales any value-added, sales or other taxes which it collects concurrent with revenue-producing activities.

PARK-OHIO HOLDINGS CORP. AND SUBSIDIARIES

NOTES TO CONSOLIDATED FINANCIAL STATEMENTS — (Continued)

We disaggregate our revenue by product line and geographic region of our customer, as we believe these criteria best depict how the nature, amount, timing and uncertainty of our revenues and cash flows are affected by economic factors. See details in the tables below.

	Year Ended December 31,		
	2024	2023	2022
PRODUCT LINE			
Supply Technologies	\$ 663.3	\$ 661.7	\$ 615.6
Engineered specialty fasteners and other products	112.5	101.7	95.9
Supply Technologies Segment	<u>775.8</u>	<u>763.4</u>	<u>711.5</u>
Fuel, rubber and plastic products	398.7	427.8	388.8
Assembly Components Segment	<u>398.7</u>	<u>427.8</u>	<u>388.8</u>
Industrial equipment	353.9	335.1	277.3
Forged and machined products	127.8	133.4	115.3
Engineered Products Segment	<u>481.7</u>	<u>468.5</u>	<u>392.6</u>
Total revenues	<u>\$ 1,656.2</u>	<u>\$ 1,659.7</u>	<u>\$ 1,492.9</u>

	Supply Technologies Segment	Assembly Components Segment	Engineered Products Segment	Total Revenues
Year Ended December 31, 2024				
GEOGRAPHIC REGION				
United States	\$ 444.8	\$ 262.0	\$ 259.0	\$ 965.8
Europe	159.4	17.3	94.8	271.5
Asia	80.7	32.7	63.3	176.7
Mexico	74.1	51.9	20.0	146.0
Canada	14.3	30.3	30.0	74.6
Other	2.5	4.5	14.6	21.6
Total	<u>\$ 775.8</u>	<u>\$ 398.7</u>	<u>\$ 481.7</u>	<u>\$ 1,656.2</u>

Year Ended December 31, 2023				
GEOGRAPHIC REGION				
United States	\$ 458.8	\$ 300.3	\$ 264.7	\$ 1,023.8
Europe	151.9	17.6	68.0	237.5
Asia	64.9	30.1	69.4	164.4
Mexico	71.9	45.1	15.6	132.6
Canada	13.2	30.2	35.2	78.6
Other	2.7	4.5	15.6	22.8
Total	<u>\$ 763.4</u>	<u>\$ 427.8</u>	<u>\$ 468.5</u>	<u>\$ 1,659.7</u>

Year Ended December 31, 2022				
GEOGRAPHIC REGION				
United States	\$ 432.8	\$ 282.1	\$ 222.2	\$ 937.1
Europe	126.1	16.4	64.9	207.4
Asia	67.1	21.9	60.2	149.2
Mexico	69.4	37.7	15.7	122.8
Canada	12.4	27.5	21.4	61.3
Other	3.7	3.2	8.2	15.1
Total	<u>\$ 711.5</u>	<u>\$ 388.8</u>	<u>\$ 392.6</u>	<u>\$ 1,492.9</u>

PARK-OHIO HOLDINGS CORP. AND SUBSIDIARIES

NOTES TO CONSOLIDATED FINANCIAL STATEMENTS — (Continued)

NOTE 3 — Segments

The Company operates three reportable segments: Supply Technologies, Assembly Components and Engineered Products. The chief operating decision maker is the Company's Chief Executive Officer. For purposes of measuring business segment performance, the chief operating decision maker utilizes segment operating income, which is defined as revenues less expenses identifiable to the product lines within each segment. The Company does not allocate items that are non-operating; unusual in nature; or corporate costs, which include but are not limited to executive compensation and corporate office costs. Segment operating income reconciles to consolidated income before income taxes by adjusting for corporate costs; gains on sales of assets; other expenses; other components of pension and other postretirement benefits income, net; and interest expense, net.

Results by business segment were as follows:

	Year Ended December 31, 2024				
	Supply Technologies	Assembly Components	Engineered Products	Corporate	Total
	(In millions)				
Net sales	\$ 775.8	\$ 398.7	\$ 481.7	\$ —	\$ 1,656.2
Cost of sales	631.5	353.6	389.7	—	1,374.8
Selling, general and administrative expenses	69.1	18.6	70.7	29.0	187.4
Restructuring and other special charges	0.2	1.1	3.6	—	4.9
Segment operating income (loss)	<u>\$ 75.0</u>	<u>\$ 25.4</u>	<u>\$ 17.7</u>	<u>\$ (29.0)</u>	89.1
Gains on sales of assets, net					(2.5)
Other expense					5.0
Operating income					<u>86.6</u>
Other components of pension and other postretirement benefits income, net					5.2
Interest expense, net					<u>(47.4)</u>
Income from continuing operations before income taxes					<u>\$ 44.4</u>

	Year Ended December 31, 2023				
	Supply Technologies	Assembly Components	Engineered Products	Corporate	Total
	(In millions)				
Net sales	\$ 763.4	\$ 427.8	\$ 468.5	\$ —	\$ 1,659.7
Cost of sales	639.1	369.5	379.7	—	1,388.3
Selling, general and administrative expenses	65.1	23.4	64.8	28.2	181.5
Restructuring, acquisition-related and other special charges	0.2	1.5	4.9	—	6.6
Segment operating income (loss)	<u>\$ 59.0</u>	<u>\$ 33.4</u>	<u>\$ 19.1</u>	<u>\$ (28.2)</u>	83.3
Gains on sales of assets, net					(0.8)
Operating income					<u>84.1</u>
Other components of pension and other postretirement benefits income, net					2.5
Interest expense, net					<u>(45.1)</u>
Income from continuing operations before income taxes					<u>\$ 41.5</u>

PARK-OHIO HOLDINGS CORP. AND SUBSIDIARIES

NOTES TO CONSOLIDATED FINANCIAL STATEMENTS — (Continued)

	Year Ended December 31, 2022				
	Supply Technologies	Assembly Components	Engineered Products (In millions)	Corporate	Total
Net sales	\$ 711.5	\$ 388.8	\$ 392.6	\$ —	\$ 1,492.9
Cost of sales	608.2	366.3	307.9	—	1,282.4
Selling, general and administrative expenses	56.0	15.8	61.5	28.9	162.2
Restructuring, acquisition-related and other special charges	1.6	5.6	8.4	1.7	17.3
Segment operating income (loss)	<u>\$ 45.7</u>	<u>\$ 1.1</u>	<u>\$ 14.8</u>	<u>\$ (30.6)</u>	<u>31.0</u>
Gains on sales of assets, net					(2.4)
Operating income					33.4
Other components of pension and other postretirement benefits income, net					11.1
Interest expense, net					(33.8)
Income from continuing operations before income taxes					<u>\$ 10.7</u>

	Year Ended December 31,		
	2024	2023	2022
Capital expenditures:			
Supply Technologies	\$ 10.5	\$ 6.3	\$ 3.4
Assembly Components	8.8	8.4	8.2
Engineered Products	10.1	12.7	15.2
Corporate	2.0	0.8	0.1
	<u>\$ 31.4</u>	<u>\$ 28.2</u>	<u>\$ 26.9</u>
Depreciation and amortization expense:			
Supply Technologies	\$ 6.7	\$ 6.6	\$ 6.0
Assembly Components	13.8	13.4	13.7
Engineered Products	12.8	11.5	10.1
Corporate	0.3	0.2	0.4
	<u>\$ 33.6</u>	<u>\$ 31.7</u>	<u>\$ 30.2</u>
Identifiable assets:			
Supply Technologies	\$ 465.6	\$ 462.8	\$ 465.7
Assembly Components	284.3	289.5	306.1
Engineered Products	468.8	462.0	436.9
Corporate	146.4	126.4	120.7
Assets held-for-sale by discontinued operations	—	—	107.2
	<u>\$ 1,365.1</u>	<u>\$ 1,340.7</u>	<u>\$ 1,436.6</u>

At December 31, 2024, 2023 and 2022, approximately 66%, 67% and 71%, respectively, of the Company's assets were located in the United States.

NOTE 4 — Discontinued Operations

On December 29, 2023, the Company completed the sale of its Aluminum Products business to Angstrom for approximately \$50 million in cash and promissory notes, plus the assumption of approximately \$3 million of finance lease obligations. The total purchase price consisted of a cash down payment of \$20.0 million paid to the Company in December 2022; cash of \$15.5 million paid to the Company at closing; and promissory notes totaling \$15.0 million payable to the Company on December 31, 2024, of which \$10.0 million were contingent on the Aluminum Products business attaining certain purchase commitments during 2024. The Company determined that the purchase commitments were not attained during 2024 and subsequently wrote-off the \$10.0 million contingent notes during 2024.

PARK-OHIO HOLDINGS CORP. AND SUBSIDIARIES

NOTES TO CONSOLIDATED FINANCIAL STATEMENTS — (Continued)

	Year Ended December 31,		
	2024	2023	2022
Net sales	\$ —	\$ 180.6	\$ 210.4
Cost of sales	—	164.9	220.0
Selling, general and administrative	—	15.8	14.2
Restructuring and other special charges	—	—	3.9
Goodwill impairment	—	—	—
Operating loss	—	(0.1)	(27.7)
Interest expense	—	(3.3)	(2.8)
Loss from operation of discontinued operations	—	(3.4)	(30.5)
Loss on sale of discontinued operations	(12.9)	(28.3)	—
Loss on classification as held-for-sale	—	—	(1.8)
Income tax benefit	2.5	5.5	8.0
Loss from discontinued operations, net of tax	<u>\$ (10.4)</u>	<u>\$ (26.2)</u>	<u>\$ (24.3)</u>

NOTE 5 — Plant Closure and Consolidation

During 2024, the Company consolidated an Assembly Components facility and closed an Engineered Products operation in Ohio. In connection with these actions, the Company received cash proceeds of \$11.5 million and recorded a gain on sale of assets of \$2.5 million, which is included on a separate line in the Statements of Consolidated Operations.

During 2023 and 2022, the Company incurred the following expenses related to plant closure and consolidation in connection with its profit-improvement actions across its businesses. The actions in the Assembly Components segment were primarily in connection with actions taken to close and consolidate its extrusion operations in Ohio, to relocate certain production to lower-cost facilities with open capacity, and to complete other cost-reduction actions.

The actions in the Engineered Product segment were primarily in connection with plant closure and consolidation of a facility in Ohio, and to complete other cost-reduction actions in this segment.

	Facility Related Costs	Severance and Other	Total
2023:			
Assembly Components	\$ 0.5	\$ —	\$ 0.5
Engineered Products	2.7	1.9	4.6
Total	<u>\$ 3.2</u>	<u>\$ 1.9</u>	<u>\$ 5.1</u>
2022:			
Assembly Components	\$ 5.6	\$ —	\$ 5.6
Engineered Products	8.2	0.2	8.4
Total	<u>\$ 13.8</u>	<u>\$ 0.2</u>	<u>\$ 14.0</u>

The Company sold certain real estate for cash proceeds and gains on sales as follows. Gains are recorded on a separate line in the Consolidated Statements of Operations and are excluded from segment operating income.

	Cash Proceeds from Sales of Assets	Gains on Sales of Assets
2024	<u>\$ 11.5</u>	<u>\$ 2.5</u>
2023	<u>\$ 2.0</u>	<u>\$ 0.8</u>
2022	<u>\$ 9.5</u>	<u>\$ 2.4</u>

PARK-OHIO HOLDINGS CORP. AND SUBSIDIARIES

NOTES TO CONSOLIDATED FINANCIAL STATEMENTS — (Continued)

NOTE 6 — Acquisitions

In February 2024, the Company acquired all of the outstanding shares of EMA Indutec GmbH (“EMA”), headquartered in Meckesheim, Germany, from the Aichelin Group, headquartered in Modling, Austria. EMA, which is included in our Engineered Products segment, is a leading manufacturer of induction heating equipment and converters and operates through its two locations in Meckesheim, Germany and Beijing, China. The purchase price, net of cash acquired, was \$11.0 million.

The allocation of the purchase price of EMA was finalized in 2024 and is summarized as follows:

	(In millions)
Accounts receivable	\$ 6.0
Inventories	4.7
Other current assets	0.5
Property, plant and equipment	1.3
Goodwill	3.9
Intangibles	6.8
Other assets	0.1
Accounts payable and accrued expenses	(10.0)
Deferred income tax liability	(2.3)
Total purchase price, net of cash acquired	<u>\$ 11.0</u>

During 2024, the Company paid \$3.0 million, as scheduled, related to deferred purchase price for the 2022 acquisitions of Charter Automotive (Changzhou) Co. Ltd. (“Charter”) and Southern Fasteners & Supply, Inc. (“Southern Fasteners”).

In July 2022, the Company acquired Charter for \$9.3 million, net of cash acquired. Charter, which is included in our Supply Technologies segment, is headquartered in Changzhou, China and is strategic to our existing fastener manufacturing business, will accelerate the global growth of the Company’s proprietary products to electric vehicle and other auto-related platforms.

In August 2022, the Company acquired Southern Fasteners for \$18.7 million, net of cash acquired. Southern Fasteners, which is included in our Supply Technologies segment, is headquartered in Winston-Salem, North Carolina. Southern Fasteners provides commercial fasteners and industrial supplies to a diverse base of maintenance, repair and operations (“MRO”) and original equipment manufacturing (“OEM”) customers throughout the United States and specializes in the design of customized inventory programs for its customers. Southern Fasteners complements Supply Technologies’ continued efforts to grow the initiatives centered around industrial supply and MRO products to our global OEM customer base.

NOTE 7 — Goodwill

The changes in the carrying amount of goodwill by reportable segment are as follows:

	Supply Technologies	Assembly Components	Engineered Products	Total
Balance at January 1, 2023	\$ 21.1	\$ 51.3	\$ 36.5	\$ 108.9
Currency translation	0.7	0.1	0.5	1.3
Balance at December 31, 2023	<u>21.8</u>	<u>51.4</u>	<u>37.0</u>	<u>110.2</u>
Acquisition	—	—	3.9	3.9
Disposal	—	—	(0.5)	(0.5)
Currency translation	(0.2)	0.1	(1.8)	(1.9)
Balance at December 31, 2024	<u>\$ 21.6</u>	<u>\$ 51.5</u>	<u>\$ 38.6</u>	<u>\$ 111.7</u>

PARK-OHIO HOLDINGS CORP. AND SUBSIDIARIES

NOTES TO CONSOLIDATED FINANCIAL STATEMENTS — (Continued)

NOTE 8 — Other Intangible Assets

	December 31, 2024				December 31, 2023			
	Weighted Average Remaining Useful Life (Years)	Gross Value	Accumulated Amortization	Net Value	Gross Value	Accumulated Amortization	Net Value	
Customer relationships	9.7	\$ 96.9	\$ 65.8	\$ 31.1	\$ 94.5	\$ 60.5	\$ 34.0	
Indefinite-lived tradenames . .	*	26.6	*	26.6	25.9	*	25.9	
Technology	10.8	25.1	11.3	13.8	22.8	10.0	12.8	
Other	3.5	4.8	4.4	0.4	4.8	4.2	0.6	
Total		\$ 153.4	\$ 81.5	\$ 71.9	\$ 148.0	\$ 74.7	\$ 73.3	

* Not applicable, as these tradenames have an indefinite life.

Amortization expense of other intangible assets was as follows:

	Year Ended December 31,		
	2024	2023	2022
Amortization expense	\$ 6.8	\$ 6.7	\$ 6.6

We estimate amortization expense for the five years subsequent to 2024 as follows:

2025	\$ 6.9
2026	\$ 6.5
2027	\$ 6.4
2028	\$ 5.5
2029	\$ 3.8

NOTE 9 — Financing Arrangements

Debt consists of the following:

	Maturity Date	Interest Rate at December 31, 2024	Carrying Value at	
			December 31, 2024	December 31, 2023
Senior Notes due 2027	April 15, 2027	6.625%	\$ 350.0	\$ 350.0
Revolving credit facility	January 14, 2027	6.15%	248.6	263.5
Finance leases	Various	Various	17.0	16.3
Other	Various	Various	13.1	15.9
Total debt			628.7	645.7
Less: Current portion of long-term debt and short-term debt			(8.4)	(9.4)
Less: Unamortized debt issuance costs			(2.0)	(2.9)
Total long-term debt, net			<u>\$ 618.3</u>	<u>\$ 633.4</u>

In September 2023, Park-Ohio Industries, Inc. (“Park-Ohio”), the operating subsidiary of the Company, amended its Seventh Amended and Restated Credit Agreement (the “Credit Agreement”). The Credit Agreement provides for a revolving credit facility in the amount of \$405.0 million, including a \$40.0 million Canadian revolving subcommitment and a European revolving subcommitment in the amount of \$30.0 million. Pursuant to the Credit Agreement, Park-Ohio has the option to increase the availability under the revolving credit facility by an aggregate incremental amount up to \$70.0 million. The Credit Agreement matures on January 14, 2027. As of December 31, 2024, we had borrowing availability of \$133.5 million under the Credit Agreement.

PARK-OHIO HOLDINGS CORP. AND SUBSIDIARIES

NOTES TO CONSOLIDATED FINANCIAL STATEMENTS — (Continued)

In April 2017, Park-Ohio completed the issuance, in a private placement, of \$350.0 million aggregate principal amount of 6.625% Senior Notes due 2027 (the “Notes”). Interest on the Notes is payable semi-annually in arrears on April 15 and October 15 of each year, and the Notes mature on April 15, 2027. The Notes are unsecured senior obligations of Park-Ohio and are guaranteed on an unsecured senior basis by the 100% owned material domestic subsidiaries of Park-Ohio.

The following table represents fair value information of the Notes, classified as Level 1, at December 31, 2024 and 2023. The fair value was estimated using quoted market prices.

	December 31, 2024	December 31, 2023
Carrying amount	\$ 350.0	\$ 350.0
Fair value	\$ 344.3	\$ 330.2

Maturities of short-term and long-term debt, excluding finance leases, during each of the five years subsequent to December 31, 2024 are as follows:

2025	\$ 5.1
2026	\$ 2.6
2027	\$ 601.0
2028	\$ 0.7
2029	\$ 0.7

Foreign subsidiaries of the Company had \$10.3 million of borrowings at December 31, 2024 and \$11.8 million at December 31, 2023.

We had outstanding bank guarantees and letters of credit under our credit arrangements of approximately \$38.5 million at December 31, 2024 and \$32.8 million at December 31, 2023.

The weighted average interest rate on all debt was approximately 7.0% in 2024, 6.6% in 2023 and 5.1% in 2022.

NOTE 10 — Income Taxes

(Loss) income from continuing operations before income taxes consists of the following:

	Year Ended December 31,		
	2024	2023	2022
United States	\$ (5.9)	\$ 0.2	\$ (21.3)
Outside the United States	50.3	41.3	32.0
	<u>\$ 44.4</u>	<u>\$ 41.5</u>	<u>\$ 10.7</u>

Income tax expense (benefit) consists of the following:

	Year Ended December 31,		
	2024	2023	2022
Current expense (benefit):			
Federal	\$ 2.8	\$ 1.7	\$ (1.6)
State	1.1	0.1	(0.2)
Foreign	15.6	13.9	9.4
	<u>19.5</u>	<u>15.7</u>	<u>7.6</u>
Deferred (benefit) expense:			
Federal	(11.9)	(7.1)	(8.0)
State	(1.8)	(1.2)	0.8
Foreign	(0.9)	1.1	(1.1)
	<u>(14.6)</u>	<u>(7.2)</u>	<u>(8.3)</u>
Income tax expense (benefit)	<u>\$ 4.9</u>	<u>\$ 8.5</u>	<u>\$ (0.7)</u>

PARK-OHIO HOLDINGS CORP. AND SUBSIDIARIES

NOTES TO CONSOLIDATED FINANCIAL STATEMENTS — (Continued)

In 2024, the effective tax rate of 11.0% was less than the U.S. statutory rate of 21%, primarily as a result of the tax benefit of the research and development tax credit and the release of certain valuation allowances.

Several countries in which Park-Ohio Holdings does business have proposed or enacted new laws or are actively considering changes to their tax laws to align with the Organization for Economic Co-operation and Development (“OECD”) proposals. Significant details around the provisions are still uncertain as the OECD and participating countries continue to work on defining the underlying rules and administrative procedures. Enactment of this and similar legislation could significantly increase our tax obligations in countries where we do business. We will continue to monitor and reflect the impact of such legislative changes in future financial statements as appropriate. During 2024, certain countries in which Park-Ohio Holdings operates enacted Pillar Two laws, but these countries’ results did not have a material impact on income tax expense.

In 2023, the effective tax rate of 20.5% approximated the U.S. statutory rate of 21%, as the tax benefits of the foreign tax credit and research and development tax credit were offset by the tax expense of foreign earnings, GILTI and non-deductible expenses.

In 2022, the Company completed a research and development tax credit study for the current year as well as U.S. tax years open under statute. The completed study resulted in additional research and development tax credit benefits being recorded in 2022.

A reconciliation of income tax expense (benefit) computed by applying the statutory federal income tax rate to income tax benefit as recorded is as follows:

	Year Ended December 31,		
	2024	2023	2022
Income tax expense at U.S. statutory rate	\$ 9.3	\$ 8.7	\$ 2.3
Effect of state income taxes, net	(0.9)	(1.1)	0.3
Effect of foreign operations	5.7	4.4	3.0
Valuation allowance	(2.3)	(1.3)	0.8
Uncertain tax positions	0.7	0.3	0.4
Non-deductible items	1.2	2.3	(0.2)
Equity compensation	0.8	1.4	1.4
Foreign tax credit	(4.7)	(4.3)	(4.1)
Other tax credits	(7.0)	(3.3)	(5.6)
GILTI	1.5	2.4	1.8
FDII	(0.5)	(0.8)	(0.2)
Other, net	1.1	(0.2)	(0.6)
Income tax expense (benefit) as recorded	<u>\$ 4.9</u>	<u>\$ 8.5</u>	<u>\$ (0.7)</u>

Significant components of the Company’s net deferred income tax assets and liabilities are as follows:

	Year Ended December 31,	
	2024	2023
Deferred income tax assets:		
Postretirement benefit obligation	\$ 0.2	\$ 0.3
Inventory	12.5	13.0
Net operating loss and credit carryforwards	17.9	18.9
Operating lease liabilities	10.1	11.3
Compensation	3.3	3.7
Capitalized research and development expenditures	29.6	13.1
Disallowed interest	7.6	11.5
Other	5.8	4.1
Total deferred income tax assets	<u>87.0</u>	<u>75.9</u>

PARK-OHIO HOLDINGS CORP. AND SUBSIDIARIES

NOTES TO CONSOLIDATED FINANCIAL STATEMENTS — (Continued)

	Year Ended December 31,	
	2024	2023
Deferred income tax liabilities:		
Depreciation	\$ 14.7	\$ 15.7
Pension	19.0	17.0
Intangible assets	16.8	16.0
Lease right-of-use assets	10.1	11.3
Other	5.5	4.8
Total deferred income tax liabilities	<u>66.1</u>	<u>64.8</u>
Net deferred income tax assets prior to valuation allowances	20.9	11.1
Valuation allowances	(4.9)	(7.3)
Net deferred income tax asset (liability)	<u>\$ 16.0</u>	<u>\$ 3.8</u>

At December 31, 2024, the Company has U.S., state and foreign net operating loss carryforwards as well as U.S. foreign tax credit carryforwards and research and development tax credit carryforwards for income tax purposes. The foreign net operating loss carryforward is \$16.0 million, of which \$11.6 million expires between 2025 and 2043 and the remainder has no expiration date. The Company has a tax benefit from a state net operating loss carryforward of \$4.2 million, of which \$3.8 million expires between 2025 and 2044 and the remainder has no expiration date. The Company also has a non-consolidated U.S. net operating loss carryforward of \$1.1 million that expires between 2035 and 2036. The Company has recorded a valuation allowance of \$4.9 million against these net operating loss carryforwards in jurisdictions where those losses are not expected to be realized. The foreign tax credit carryforward is \$1.2 million and expires in 2032. The U.S. research and development tax credit carryforward is \$6.1 million and expires between 2031 and 2044.

As of December 31, 2024 and 2023, the Company was in a cumulative three-year loss position in the U.S. The Company has determined that it was more likely than not that its U.S. deferred tax assets will be realized. The Company reviews all valuation allowances related to deferred tax assets and will reverse these valuation allowances, partially or totally, when appropriate under ASC 740.

A reconciliation of the beginning and ending amount of unrecognized tax benefits is as follows:

	2024	2023	2022
Unrecognized Tax Benefit — January 1	\$ 0.5	\$ 0.8	\$ 1.0
Gross Increases to Tax Positions Related to Prior Years	0.8	—	0.3
Gross Decreases related to settlements with taxing authorities	—	—	—
Expiration of Statute of Limitations	(0.1)	(0.3)	(0.5)
Unrecognized Tax Benefit — December 31	<u>\$ 1.2</u>	<u>\$ 0.5</u>	<u>\$ 0.8</u>

The total amount of unrecognized tax benefits that, if recognized, would affect the effective tax rate is \$0.8 million and \$0.1 million at December 31, 2024 and December 31, 2023, respectively. The Company recognizes accrued interest and penalties related to unrecognized tax benefits in income tax expense. During 2024 and 2023, the Company recognized a tax benefit of approximately \$0.1 million in net interest and penalties due to the expiration of various uncertain tax positions. The Company had approximately \$0.1 million for the payment of interest and penalties accrued at December 31, 2023. It is reasonably possible that, within the next twelve months, the amount of gross unrecognized tax benefits could be reduced by approximately \$0.4 million as a result of the closure of tax statutes related to existing uncertain tax positions.

The Company is subject to taxation in the U.S. and various state and foreign jurisdictions. The Company's tax years for 2015 through 2024 remain open for examination by the Internal Revenue Service and 2018 through 2024 remain open for examination by various state and foreign taxing authorities.

As of December 31, 2024, the Company has accumulated undistributed earnings generated by our foreign subsidiaries of approximately \$325.6 million. We intend to indefinitely reinvest these earnings and expect future U.S. cash generation to be sufficient to meet future U.S. cash needs.

PARK-OHIO HOLDINGS CORP. AND SUBSIDIARIES

NOTES TO CONSOLIDATED FINANCIAL STATEMENTS — (Continued)

NOTE 11 — Stock-Based Compensation

The Company follows the provisions of ASC 718, “Compensation — Stock Compensation” (“ASC 718”), which requires all share-based payments to employees to be recognized in the income statement based on their grant date fair values. Compensation expense for awards with service conditions only that are subject to graded vesting is recognized on a straight-line basis over the term of the vesting period.

A summary of activity for the year ended December 31, 2024 is as follows:

		Time-Based
	Number of Shares	Weighted Average Grant Date Fair Value
	(in whole shares)	
Outstanding — beginning of year	755,064	\$ 18.70
Granted ^(a)	259,835	25.63
Vested	(302,474)	19.41
Cancelled or expired	(36,698)	18.26
Outstanding — end of year	675,727	\$ 21.07

(a) Included in the granted amount are 2,175 restricted share units.

The Company recognized compensation expense of \$5.6 million, \$6.5 million and \$7.2 million for the years ended December 31, 2024, 2023 and 2022, respectively, relating to stock-based awards.

The total fair value of restricted shares and share units that vested during the years ended December 31, 2024, 2023 and 2022 was \$5.9 million, \$6.9 million and \$6.5 million, respectively.

As of December 31, 2024, the Company had unrecognized compensation expense of \$8.2 million related to restricted shares. The unrecognized compensation expense is expected to be recognized over a total weighted average period of 1.9 years.

NOTE 12 — Commitments and Contingencies

The Company is subject to a variety of claims, suits, investigations and administrative proceedings with respect to commercial, premises liability, product liability, employment, personal injury and environmental matters arising from the ordinary course of business. The Company records a liability for loss contingencies in the consolidated financial statements when a loss is known or considered probable and the amount can be reasonably estimated. Our provisions are based on historical experience, current information and legal advice, and they may be adjusted in the future based on new developments. Estimating probable losses requires the analysis of multiple forecasted factors that often depend on judgments and potential actions by third parties. Although it is not possible to predict with certainty the ultimate outcome or cost of these matters, the Company believes they will not have a material adverse effect on our consolidated financial statements.

Our subsidiaries are involved in a number of contractual and warranty-related disputes. We believe that appropriate liabilities for these contingencies have been recorded; however, actual results may differ materially from our estimates.

In addition to the routine claims, suits, investigations and proceedings and asserted claims noted above, we are also a co-defendant in approximately 108 cases asserting claims on behalf of approximately 152 plaintiffs alleging personal injury as a result of exposure to asbestos. These asbestos cases generally relate to production and sale of asbestos-containing products and allege various theories of liability, including negligence, gross negligence and strict liability, and seek compensatory and, in some cases, punitive damages. In every asbestos case in which we are named as a party, the complaints are filed against multiple named defendants. To the extent that any specific amount of damages is sought, the amount applies to claims against all named defendants.

Historically, we have been dismissed from asbestos cases on the basis that the plaintiff incorrectly sued one of our subsidiaries or because the plaintiff failed to identify any asbestos-containing product manufactured or sold by us or our subsidiaries. We intend to vigorously defend these asbestos cases and believe we will continue to be successful in being dismissed from such cases. However, it

PARK-OHIO HOLDINGS CORP. AND SUBSIDIARIES

NOTES TO CONSOLIDATED FINANCIAL STATEMENTS — (Continued)

is not possible to predict the ultimate outcome of asbestos-related lawsuits, claims and proceedings due to the unpredictable nature of personal injury litigation.

Despite this uncertainty, and although our results of operations and cash flows for a particular period could be adversely affected by asbestos-related lawsuits, claims and proceedings, management believes that the ultimate resolution of these matters will not have a material adverse effect on our financial condition, liquidity or results of operations. Among the factors management considered in reaching this conclusion were: (a) our historical success in being dismissed from these types of lawsuits on the bases mentioned above; (b) many cases have been improperly filed against one of our subsidiaries; (c) in many cases the plaintiffs have been unable to establish any causal relationship to us or our products or premises; (d) in many cases, the plaintiffs have been unable to demonstrate that they have suffered any identifiable injury or compensable loss at all or that any injuries that they have incurred did in fact result from alleged exposure to asbestos; and (e) the complaints assert claims against multiple defendants and, in most cases, the damages alleged are not attributed to individual defendants. Additionally, we do not believe that the amounts claimed in any of the asbestos cases are meaningful indicators of our potential exposure because the amounts claimed typically bear no relation to the extent of the plaintiff's injury, if any.

NOTE 13 - Lease Arrangements

We lease manufacturing facilities, warehouse space, office space, machinery and equipment, information technology equipment and vehicles under operating leases. We also lease one building and machinery and numerous equipment under finance leases. For operating leases with terms greater than 12 months, we record the operating right-of-use asset and related lease liability at the present value of lease payments over the lease term. In certain real estate leases, we have options to renew lease terms, generally at our sole discretion. We evaluate renewal options at the lease commencement date to determine if we are reasonably certain to exercise the option on the basis of economic factors.

The discount rate implicit in our operating leases is generally not determinable, and therefore the Company determines the discount rate for each lease based on its incremental borrowing rate. The incremental borrowing rate is calculated based on lease term, currency and collateral adjustments.

During 2024, the Company obtained right-of-use assets in exchange for new operating lease liabilities of \$7.4 million.

Balance Sheet as of December 31, 2024 and 2023

	<u>Classification on the Balance Sheet</u>	<u>December 31, 2024</u>	<u>December 31, 2023</u>
Assets			
Operating lease assets	Operating lease right-of-use assets	\$ 40.3	\$ 44.7
Finance lease assets	Property, plant and equipment, net	22.1	22.2
Total lease assets		<u>\$ 62.4</u>	<u>\$ 66.9</u>
Liabilities			
Current			
Operating	Current portion of operating lease liabilities	\$ 10.7	\$ 10.6
Finance	Current portion of long-term debt and short-term debt	3.3	3.8
Noncurrent			
Operating	Long-term operating lease liabilities	29.8	34.4
Finance	Long-term debt	13.7	12.5
Total lease liabilities		<u>\$ 57.5</u>	<u>\$ 61.3</u>
Weighted-average remaining lease term (in years)			
Operating leases		4.9	5.5
Finance leases		5.0	5.3
Weighted-average discount rate			
Operating leases		5.2%	5.2%
Finance leases		6.1%	5.8%

PARK-OHIO HOLDINGS CORP. AND SUBSIDIARIES

NOTES TO CONSOLIDATED FINANCIAL STATEMENTS — (Continued)

Lease Expense for 2024, 2023 and 2022

Operating lease expense is recognized on a straight-line basis over the lease term, with variable payments recognized in the period those payments are incurred.

	2024	2023	2022
Finance lease expense			
Amortization of right-of-use assets	\$ 2.9	\$ 1.7	\$ 3.2
Interest on lease liabilities	0.9	1.0	0.3
Operating lease expense	15.5	14.8	15.2
Other lease expense ⁽¹⁾	7.6	9.6	6.6
Total lease expense	<u>\$ 26.9</u>	<u>\$ 27.1</u>	<u>\$ 25.3</u>

(1) - Other lease expense includes variable lease costs and short-term lease costs.

Cash Flow Information for 2024, 2023 and 2022

	2024	2023	2022
Amounts included in the Consolidated Statements of Cash Flows:			
Operating cash outflows for operating leases	\$ (15.1)	\$ (14.3)	\$ (14.5)
Operating cash outflows for finance leases	\$ (0.9)	\$ (1.0)	\$ (0.3)
Financing cash inflows for finance leases	\$ 0.7	\$ 0.9	\$ 8.5

Maturities of Lease Liabilities as of December 31, 2024, were as follows:

	Operating Leases	Finance Leases
2025	\$ 12.5	\$ 3.8
2026	9.9	3.3
2027	7.1	3.1
2028	5.9	3.1
2029	4.6	5.3
Thereafter	5.8	1.8
Total lease payments	<u>45.8</u>	<u>20.4</u>
Less: amount of lease payments representing interest	<u>(5.3)</u>	<u>(3.4)</u>
Total present value of future lease payments	<u>\$ 40.5</u>	<u>\$ 17.0</u>

Certain of the Company's leases are with related parties at an annual rental expense of approximately \$3.0 million. Transactions with related parties are not material to the Company's financial position, results of operations or cash flows.

NOTE 14 — Pensions and Postretirement Benefits

The Company and its subsidiaries have pension plans, principally noncontributory defined benefit or noncontributory defined contribution plans, covering substantially all employees. In addition, the Company has an unfunded postretirement benefit plan. One of its defined benefit plans, covering most U.S. employees not covered by collective bargaining agreements, utilizes a cash balance formula. Under a cash balance formula, a plan participant accumulates a retirement benefit consisting of pay credits that are based upon a percentage of current eligible earnings and current interest credits. For the remaining defined benefit plans, benefits are based on the employee's years of service. For the defined contribution plans, the costs charged to operations and the amount funded are based upon a percentage of the covered employees' compensation.

The Company's objectives for the pension plan are to monitor the funded ratio; create general investment goals with regard to acceptable risk and liquidity needs ensuring the long-term interests of participants and beneficiaries are considered; and manage risk by minimizing the short-term and long-term risk of actual expenses and contribution requirements.

PARK-OHIO HOLDINGS CORP. AND SUBSIDIARIES

NOTES TO CONSOLIDATED FINANCIAL STATEMENTS — (Continued)

The following tables set forth the changes in benefit obligation, plan assets, funded status and amounts recognized in the consolidated balance sheet for the defined benefit pension and postretirement benefit plans as of December 31, 2024 and 2023:

	Pension Benefits		Postretirement Benefits	
	2024	2023	2024	2023
Change in benefit obligation				
Benefit obligation at beginning of year	\$ 72.8	\$ 67.6	\$ 5.0	\$ 5.2
Service cost	4.3	4.3	—	—
Interest cost	3.4	3.5	0.2	0.3
Actuarial (gain) loss	(1.2)	3.2	(0.5)	0.2
Benefits and expenses paid	(8.5)	(6.2)	(0.7)	(0.7)
Curtailment loss - discontinued operations	—	0.4	—	—
Benefit obligation at end of year	<u>\$ 70.8</u>	<u>\$ 72.8</u>	<u>\$ 4.0</u>	<u>\$ 5.0</u>
Change in plan assets				
Fair value of plan assets at beginning of year	\$ 147.9	\$ 131.5	\$ 3.4	\$ 3.6
Actual return on plan assets	16.7	22.6	0.4	0.5
Benefits and expenses paid	(8.5)	(6.2)	(0.7)	(0.7)
Fair value of plan assets at end of year	<u>\$ 156.1</u>	<u>\$ 147.9</u>	<u>\$ 3.1</u>	<u>\$ 3.4</u>
Funded (underfunded) status of the plans	<u>\$ 85.3</u>	<u>\$ 75.1</u>	<u>\$ (0.9)</u>	<u>\$ (1.6)</u>

Amounts recognized in the consolidated balance sheets consist of:

	Pension Benefits		Postretirement Benefits	
	2024	2023	2024	2023
Pension assets	\$ 85.3	\$ 75.1	\$ —	\$ —
Other long-term liabilities	—	—	0.9	1.6
	<u>\$ 85.3</u>	<u>\$ 75.1</u>	<u>\$ 0.9</u>	<u>\$ 1.6</u>
Amounts recognized in Accumulated other comprehensive loss				
Net actuarial loss	\$ 17.7	\$ 26.8	\$ 1.0	\$ 2.0
Net prior service cost	0.1	0.1	—	—
Accumulated other comprehensive loss	<u>\$ 17.8</u>	<u>\$ 26.9</u>	<u>\$ 1.0</u>	<u>\$ 2.0</u>

The pension plan weighted-average asset allocation at December 31, 2024 and 2023 and target allocation for 2025 are as follows:

Asset Category	Target 2025	Plan Assets	
		2024	2023
Equity securities	45-75%	55.0%	56.0%
Debt securities	15-35%	17.0%	16.0%
Other	0-30%	28.0%	28.0%
	<u>100%</u>	<u>100%</u>	<u>100%</u>

PARK-OHIO HOLDINGS CORP. AND SUBSIDIARIES

NOTES TO CONSOLIDATED FINANCIAL STATEMENTS — (Continued)

The following table sets forth, by level within the fair value hierarchy, the pension plans assets:

	2024		2023	
	Level 1	Total	Level 1	Total
Common stock	\$ 30.6	\$ 30.6	\$ 22.3	\$ 22.3
Equity securities	51.7	51.7	58.3	58.3
Foreign stock	4.7	4.7	4.7	4.7
U.S. Government obligations	9.0	9.0	9.2	9.2
Fixed income securities	7.0	7.0	3.0	3.0
Corporate bonds	11.5	11.5	11.7	11.7
Cash and cash equivalents	6.4	6.4	6.5	6.5
Total	<u>\$ 120.9</u>		<u>\$ 115.7</u>	
Investments measured at net asset value:				
Common collective trusts		4.6		11.4
Hedge funds		33.7		24.2
Postretirement benefit assets		(3.1)		(3.4)
Total assets at fair value		<u>\$ 156.1</u>		<u>\$ 147.9</u>

Valuation Methodologies: Following is a description of the valuation methodologies used for pension plan assets measured at fair value. There have been no changes in the methodologies used at December 31, 2024 and 2023.

Common stock, equity securities and foreign stock - These securities consist of direct investments in the stock of publicly-traded companies. Such investments are valued based on the closing price reported in an active market on which the individual securities are traded. As such, the direct investments are classified as Level 1.

U.S. Government obligations, fixed income securities and corporate bonds - Valued at the closing price of each security.

Cash equivalents - Consists of primarily money market funds and certificates of deposit, for which book value equals fair value.

Common collective trusts - Valued at the net unit value of units held by the trust at year end. The unit value is determined by the total value of fund assets divided by the total number of units of the fund owned. The equity investments in collective trusts are predominantly in index funds for which the underlying securities are actively traded in public markets based upon readily measurable prices. Common collective trusts are measured at fair value using the net asset value per share practical expedient have not been categorized in the fair value hierarchy and are being presented in the tables above to permit a reconciliation of the fair value hierarchy to the total plan assets.

Hedge funds - Consists of direct investments in hedge funds through limited partnership interests. Net asset values are based on the estimated fair value of the ownership interest in the investment as determined by the general partner. The majority of the holdings of the hedge funds are in equity securities traded on public exchanges. The investment terms of the hedge funds allow capital to be redeemed quarterly given prior notice with certain limitations. Hedge funds measured at fair value using the net asset value per share practical expedient have not been categorized in the fair value hierarchy and are being presented in the tables above to permit a reconciliation of the fair value hierarchy to the total plan assets.

For additional information regarding fair value measurements, see Note 1.

PARK-OHIO HOLDINGS CORP. AND SUBSIDIARIES

NOTES TO CONSOLIDATED FINANCIAL STATEMENTS — (Continued)

The following tables summarize the assumptions used in the valuation of pension and postretirement benefit obligations at December 31 and the measurement of the net periodic benefit cost in the following year. The Company used a spot rate approach by applying the specific spot rates along the yield curve to the relevant projected cash flows in the estimation of the service and interest components of benefit cost.

	Weighted-Average assumptions as of December 31,					
	Pension Benefits			Postretirement Benefits		
	2024	2023	2022	2024	2023	2022
Assumptions used to determine benefit obligation at year-end						
Discount rate	5.55%	5.14%	5.48%	5.43%	5.06%	5.41%
Rate of compensation increase	3.00 % to 7.00%	3.00%	3.00%	N/A	N/A	N/A
Health care cost trend rate	N/A	N/A	N/A	6.50%	6.75%	7.00%
Ultimate health care cost trend rate	N/A	N/A	N/A	5.00%	5.00%	5.00%
Year of ultimate trend rate	N/A	N/A	N/A	2031	2031	2028
Assumptions used to determine expense						
Discount rate for benefit obligations	5.14%	5.48%	2.80%	5.06%	5.40%	2.51%
Discount rate for service costs	5.16%	5.53%	2.85%	5.06%	5.42%	2.88%
Discount rate for interest costs	5.09%	5.35%	2.21%	5.03%	5.29%	1.96%
Expected return on plan assets	7.50%	7.75%	7.75%	7.50%	7.75%	7.75%
Rate of compensation increase	3.00% to 7.00%	3.00%	3.00%	N/A	N/A	N/A
Medical health care benefits rate increase	N/A	N/A	N/A	6.50%	6.75%	7.00%
Medical drug benefits rate increase	N/A	N/A	N/A	6.50%	6.75%	7.00%
Ultimate health care cost trend rate	N/A	N/A	N/A	5.00%	5.00%	5.00%
Year of ultimate trend rate	N/A	N/A	N/A	2031	2031	2028

In determining its expected return on plan assets assumption for the year ended December 31, 2024, the Company considered historical experience, its asset allocation, expected future long-term rates of return for each major asset class, and an assumed long-term inflation rate. This assumption was supported by the asset return generation model, which projected future asset returns using simulation and asset class correlation.

	Pension Benefits			Postretirement Benefits		
	2024	2023	2022	2024	2023	2022
Components of net periodic benefit cost						
Service costs	\$ 4.3	\$ 4.3	\$ 4.3	\$ —	\$ —	\$ —
Interest costs	3.4	3.5	1.8	0.2	0.3	0.1
Expected return on plan assets	(10.6)	(9.9)	(12.9)	(0.2)	(0.3)	(0.3)
Recognized net actuarial loss	1.8	3.6	—	0.2	0.3	0.2
Benefit (income) costs - continuing operations	(1.1)	1.5	(6.8)	0.2	0.3	—
Curtailment loss - discontinued operations	—	0.4	—	—	—	—
Total benefit (income) costs	<u>\$ (1.1)</u>	<u>\$ 1.9</u>	<u>\$ (6.8)</u>	<u>\$ 0.2</u>	<u>\$ 0.3</u>	<u>\$ —</u>
Other changes in plan assets and benefit obligations recognized in accumulated other comprehensive loss (income) ("AOCI")						
AOCI at beginning of year	\$ 26.9	\$ 40.0	\$ 10.9	\$ 2.0	\$ 2.4	\$ 2.2
Net loss amortization	(1.8)	(3.7)	—	(0.2)	(0.3)	(0.2)
Recognition of actuarial (gain) loss	(7.3)	(9.4)	29.1	(0.8)	(0.1)	0.4
Total recognized in accumulated other comprehensive loss at end of year	<u>\$ 17.8</u>	<u>\$ 26.9</u>	<u>\$ 40.0</u>	<u>\$ 1.0</u>	<u>\$ 2.0</u>	<u>\$ 2.4</u>

PARK-OHIO HOLDINGS CORP. AND SUBSIDIARIES

NOTES TO CONSOLIDATED FINANCIAL STATEMENTS — (Continued)

Below is a table summarizing the Company's expected future benefit payments and the expected payments due to Medicare subsidy over the next ten years:

	Pension Benefits	Postretirement Benefits		
		Gross	Expected Medicare Subsidy	Net including Medicare Subsidy
2025	\$ 13.9	\$ 0.6	\$ 0.5	\$ 0.1
2026	8.2	0.5	0.5	—
2027	7.9	0.5	0.5	—
2028	7.3	0.4	0.4	—
2029	7.2	0.4	0.4	—
2030 to 2034	31.4	1.7	1.6	0.1

The Company expects to make no contributions to its defined benefit plans in 2025 and beyond, as pension and postretirement benefits are expected to be paid out of plan assets.

In January 2008, a Supplemental Executive Retirement Plan ("SERP") for the Former CEO was approved by the Compensation Committee of the Board of Directors of the Company. The SERP provides an annual supplemental retirement benefit of up to \$0.4 million upon the Former CEO's termination of employment with the Company. The Former CEO is fully vested in the SERP, which has a balance of \$1.6 million as of December 31, 2024.

NOTE 15 — Accumulated Other Comprehensive Income (Loss)

The components of and changes in accumulated other comprehensive income (loss) for the years ended December 31, 2024, 2023 and 2022 were as follows:

	Cumulative Translation Adjustment	Pension and Postretirement Benefits	Total
Balance at January 1, 2022	\$ (18.3)	\$ (0.9)	\$ (19.2)
Currency translation	(19.9)	—	(19.9)
Pension and OPEB activity, net of tax	—	(22.7)	(22.7)
Balance at December 31, 2022	(38.2)	(23.6)	(61.8)
Currency translation	7.7	—	7.7
Pension and OPEB activity, net of tax	—	10.4	10.4
Balance at December 31, 2023	(30.5)	(13.2)	(43.7)
Currency translation	(15.9)	—	(15.9)
Pension and OPEB activity, net of tax	—	7.8	7.8
Balance at December 31, 2024	<u>\$ (46.4)</u>	<u>\$ (5.4)</u>	<u>\$ (51.8)</u>

No income taxes are provided on currency translation as foreign earnings are considered permanently re-invested.

NOTE 16 — Subsequent Events

On January 24, 2025, the Company's Board of Directors declared a quarterly dividend of \$0.125 per common share. The dividend was paid on February 21, 2025, to shareholders of record as of the close of business on February 7, 2025 and resulted in cash payments of \$1.8 million.

Item 9. Changes in and Disagreements With Accountants on Accounting and Financial Disclosure

None.

PARK-OHIO HOLDINGS CORP. AND SUBSIDIARIES

NOTES TO CONSOLIDATED FINANCIAL STATEMENTS — (Continued)

Item 9A. Controls and Procedures

Evaluation of disclosure controls and procedures

As of the end of the period covered by this report, we carried out an evaluation, under the supervision and with the participation of our Chairman and Chief Executive Officer and our Vice President and Chief Financial Officer, of the effectiveness of our disclosure controls and procedures pursuant to Rule 13a-15(e) and Rule 15d-15(e) of the Securities Exchange Act of 1934, as amended (“Exchange Act”). Based upon this evaluation, our Chairman and Chief Executive Officer and Vice President and Chief Financial Officer concluded that, as of the end of the period covered by this Annual Report on Form 10-K, our disclosure controls and procedures were effective.

Management’s Report on Internal Control over Financial Reporting

Our management is responsible for establishing and maintaining adequate internal control over financial reporting, as such term is defined in Rule 13a-15(f) under the Exchange Act. As required by Rule 13a-15(c) under the Exchange Act, management carried out an evaluation, with participation of our Chairman and Chief Executive Officer and Vice President and Chief Financial Officer, of the effectiveness of our internal control over financial reporting as of December 31, 2024. The framework on which such evaluation was based is contained in the report entitled “Internal Control — Integrated Framework” issued by the Committee of Sponsoring Organizations of the Treadway Commission (2013 Framework) (the “COSO Report”). Management’s assessment and conclusion on the effectiveness over financial reporting did not include the internal controls of EMA, which constituted less than 3% of total assets and less than 2% of total revenues for the year then ended. Based upon the evaluation described above under the framework contained in the COSO Report, our management has concluded that our internal control over financial reporting was effective as of December 31, 2024.

Ernst & Young LLP, our independent registered public accounting firm, who audited the consolidated financial statements of the Company for the year ended December 31, 2024, also audited the effectiveness of the Company’s internal control over financial reporting. Their report is set forth on page 38 of this Annual Report on Form 10-K and is incorporated by reference into this Item 9A.

Changes in internal control over financial reporting

There have been no changes in our internal control over financial reporting that occurred during the fourth quarter of 2024 that have materially affected, or are reasonably likely to materially affect, our internal control over financial reporting.

Item 9B. Other Information

During the quarter ended December 31, 2024, no director or officer (as defined in Rule 16a-1(f) promulgated under the Exchange Act) of the Company adopted or terminated a “Rule 10b5-1 trading arrangement” or “non-Rule 10b5-1 trading arrangement” (as each term is defined in Item 408 of Regulation S-K).

Item 9C. Disclosure Regarding Foreign Jurisdictions that Prevent Inspections

Not applicable.

PART III

Item 10. Directors, Executive Officers and Corporate Governance

The information concerning directors, the identification of the audit committee and the audit committee financial expert and our code of ethics required under this item is incorporated herein by reference from the material contained under the captions “Election of Directors” and “Corporate Governance,” as applicable, in our definitive proxy statement for the 2025 annual meeting of shareholders to be filed with the SEC pursuant to Regulation 14A not later than 120 days after the close of the fiscal year (the “Proxy Statement”). Information relating to executive officers is contained in Part I of this Annual Report on Form 10-K.

The Company has adopted an insider trading policy applicable to its directors, officers and employees, and has implemented procedures for the Company, governing the purchase, sale and other disposition of the Company’s securities. The Company believes its insider trading policy and procedures are reasonably designed to promote compliance with insider trading laws, rules, regulations and listing standards applicable to the Company. A copy of the Company’s insider trading policy is filed as Exhibit 19.1 to this Annual Report on Form 10-K.

Item 11. Executive Compensation

The information relating to executive officer and director compensation and the compensation committee report contained under the heading “Executive Compensation” in the Proxy Statement is incorporated herein by reference. The information relating to compensation committee interlocks contained under the heading “Corporate Governance — Compensation Committee Interlocks and Insider Participation” in the Proxy Statement is incorporated herein by reference.

Item 12. Security Ownership of Certain Beneficial Owners and Management and Related Stockholder Matters

The information required by Item 403 of Regulation S-K is incorporated herein by reference from the material contained under the captions “Principal Shareholders” in the Proxy Statement. Information required by Item 201(d) of Regulation S-K can be found below.

The following table provides information about our common stock that may be issued under our equity compensation plan as of December 31, 2024.

Equity Compensation Plan Information

Plan Category	Number of securities to be issued upon exercise price of outstanding options, warrants and rights (a)	Weighted-average exercise price of outstanding options, warrants and rights (b)	Number of securities remaining available for future issuance under equity compensation plans (excluding securities reflected in column (a)) (c)
Equity compensation plans approved by security holders ⁽¹⁾	—	\$ —	254,134
Equity compensation plans not approved by security holders	—	—	—
Total	—	\$ —	254,134

(1) Includes our 2023 Equity and Incentive Compensation Plan

Item 13. Certain Relationships and Related Transactions, and Director Independence

The information required under this item is incorporated herein by reference to the material contained under the captions “Corporate Governance Director Independence” and “Transactions With Related Persons” in the Proxy Statement.

Item 14. Principal Accountant Fees and Services

The information required under this item is incorporated herein by reference to the material contained under the caption “Audit Committee — Independent Auditor Fee Information” in the Proxy Statement.

PART IV

Item 15. Exhibits and Financial Statement Schedules

(a)(1) The following financial statements are included in Part II, Item 8 of this annual report on Form 10-K:

	<u>Page</u>
Report of Independent Registered Public Accounting Firm (PCAOB ID 42)	27
Report of Independent Registered Public Accounting Firm (PCAOB ID 42)	29
Consolidated Balance Sheets — December 31, 2024 and 2023	30
Consolidated Statements of Operations — Years Ended December 31, 2024, 2023 and 2022	31
Consolidated Statements of Comprehensive Income (Loss) — Years Ended December 31, 2024, 2023 and 2022	32
Consolidated Statements of Shareholders' Equity — Years Ended December 31, 2024, 2023 and 2022	33
Consolidated Statements of Cash Flows — Years Ended December 31, 2024, 2023 and 2022	34
Notes to Consolidated Financial Statements	35

All other schedules for which provision is made in the applicable accounting regulations of the SEC are not required under the related instructions or are not applicable and, therefore, have been omitted.

(2) Financial Statement Schedules

SCHEDULE II — VALUATION AND QUALIFYING ACCOUNTS AND RESERVES

Description	Balance at Beginning of Period	Charged to Costs and Expenses	Deductions and Other	Balance at End of Period
Year Ended December 31, 2024:				
Allowances deducted from assets:				
Trade receivable allowances	\$ 3.6	1.1	(0.8)(A)	\$ 3.9
Inventory reserves	42.9	12.7	(12.9)(B)	42.7
Tax valuation allowances	7.3	(2.4)	—	4.9
Year Ended December 31, 2023:				
Allowances deducted from assets:				
Trade receivable allowances	\$ 3.8	2.3	(2.5)(A)	\$ 3.6
Inventory reserves	38.5	9.2	(4.8)(B)	42.9
Tax valuation allowances	8.6	(1.3)	—	7.3
Year Ended December 31, 2022:				
Allowances deducted from assets:				
Trade receivable allowances	\$ 5.2	1.9	(3.3)(A)	\$ 3.8
Inventory reserves	37.5	8.4	(7.4)(B)	38.5
Tax valuation allowances	6.1	2.5	—	8.6

Note (A) - Uncollectible accounts written off, net of recoveries.

Note (B) - Amounts written off.

(3) Exhibits:

Exhibit	
3.1	Amended and Restated Articles of Incorporation of Park-Ohio Holdings Corp. (filed as Exhibit 3.1 to the Form 10-K of Park-Ohio Holdings Corp. for the year ended December 31, 1998, SEC File No. 000-03134 and incorporated by reference and made a part hereof)
3.2	Code of Regulations of Park-Ohio Holdings Corp. (filed as Exhibit 3.2 to the Form 10-K of Park-Ohio Holdings Corp. for the year ended December 31, 1998, SEC File No. 000-03134 and incorporated by reference and made a part hereof)

Exhibit

- 4.1 Indenture, dated April 17, 2017, among Park-Ohio Industries, Inc., the Guarantors (as defined therein) and Wells Fargo Bank, National Association, as trustee (including Form of Note) (filed as Exhibit 4.1 to the Form 8-K of Park-Ohio Holdings Corp. filed on April 17, 2017, SEC File No. 000-03134 and incorporated herein by reference and made a part hereof)
- 4.2 Seventh Amended and Restated Credit Agreement, dated April 17, 2017, among Park-Ohio Industries, Inc., RB&W Corporation of Canada, the European Borrowers (as defined therein) party thereto, the other Loan Parties (as defined therein), the Lenders (as defined therein), JPMorgan Chase Bank, N.A., as administrative agent, JPMorgan Chase Bank, N.A., Toronto Branch, as Canadian agent, J.P. Morgan Europe Limited, as European agent and J.P. Morgan Securities Inc., as sole lead arranger and bookrunning manager (filed as Exhibit 4.3 to the Form 8-K of Park-Ohio Holdings Corp. filed on April 17, 2017, SEC File No. 000-03134 and incorporated herein by reference and made a part hereof)
- 4.3 Amendment No. 1 to the Seventh Amended and Restated Credit Agreement, dated June 25, 2018, Park-Ohio Industries, Inc., RB&W Corporation of Canada, the European Borrowers (as defined therein) party thereto, the other Loan Parties (as defined therein), the Lenders (as defined therein), JPMorgan Chase Bank, N.A., as administrative agent, JPMorgan Chase Bank, N.A., Toronto Branch, as Canadian agent, J.P. Morgan Europe Limited, as European agent and J.P. Morgan Securities Inc., as sole lead arranger and bookrunning manager (filed as Exhibit 4.1 to the Form 10-Q of Park-Ohio Holdings Corp. filed on August 9, 2018, SEC File No. 000-03134 and incorporated herein by reference and made a part hereof).
- 4.4 Amendment No. 2 to the Seventh Amended and Restated Credit Agreement, dated October 5, 2018, Park-Ohio Industries, Inc., RB&W Corporation of Canada, the European Borrowers (as defined therein) party thereto, the other Loan Parties (as defined therein), the Lenders (as defined therein), JPMorgan Chase Bank, N.A., as administrative agent, JPMorgan Chase Bank, N.A., Toronto Branch, as Canadian agent, J.P. Morgan Europe Limited, as European agent and J.P. Morgan Securities Inc., as sole lead arranger and bookrunning manager (filed as Exhibit 4.1 to the Form 10-Q of Park-Ohio Holdings Corp. filed on August 3, 2022, SEC File No. 000-03134 and incorporated herein by reference and made a part hereof).
- 4.5 Amendment No. 3 to the Seventh Amended and Restated Credit Agreement, dated February 19, 2019, Park-Ohio Industries, Inc., RB&W Corporation of Canada, the European Borrowers (as defined therein) party thereto, the other Loan Parties (as defined therein), the Lenders (as defined therein), JPMorgan Chase Bank, N.A., as administrative agent, JPMorgan Chase Bank, N.A., Toronto Branch, as Canadian agent, J.P. Morgan Europe Limited, as European agent and J.P. Morgan Securities Inc., as sole lead arranger and bookrunning manager (filed as Exhibit 4.2 to the Form 10-Q of Park-Ohio Holdings Corp. filed on May 10, 2022, SEC File No. 000-03134 and incorporated herein by reference and made a part hereof).
- 4.6 Amendment No. 4 to the Seventh Amended and Restated Credit Agreement, dated November 26, 2019, Park-Ohio Industries, Inc., RB&W Corporation of Canada, the European Borrowers (as defined therein) party thereto, the other Loan Parties (as defined therein), the Lenders (as defined therein), JPMorgan Chase Bank, N.A., as administrative agent, JPMorgan Chase Bank, N.A., Toronto Branch, as Canadian agent, J.P. Morgan Europe Limited, as European agent and J.P. Morgan Securities Inc., as sole lead arranger and bookrunning manager (filed as Exhibit 4.3 to the Form 10-Q of Park-Ohio Holdings Corp. filed on May 10, 2022, SEC File No. 000-03134 and incorporated herein by reference and made a part hereof).
- 4.7 Amendment No. 5 to the Seventh Amended and Restated Credit Agreement, dated September 30, 2021, Park-Ohio Industries, Inc., RB&W Corporation of Canada, the European Borrowers (as defined therein) party thereto, the other Loan Parties (as defined therein), the Lenders (as defined therein), JPMorgan Chase Bank, N.A., as administrative agent, JPMorgan Chase Bank, N.A., Toronto Branch, as Canadian agent, J.P. Morgan Europe Limited, as European agent and J.P. Morgan Securities Inc., as sole lead arranger and bookrunning manager (filed as Exhibit 4.4 to the Form 10-Q of Park-Ohio Holdings Corp. filed on May 10, 2022, SEC File No. 000-03134 and incorporated herein by reference and made a part hereof).
- 4.8 Amendment No. 6 to the Seventh Amended and Restated Credit Agreement, dated November 30, 2021, Park-Ohio Industries, Inc., RB&W Corporation of Canada, the European Borrowers (as defined therein) party thereto, the other Loan Parties (as defined therein), the Lenders (as defined therein), JPMorgan Chase Bank, N.A., as administrative agent, JPMorgan Chase Bank, N.A., Toronto Branch, as Canadian agent, J.P. Morgan Europe Limited, as European agent and J.P. Morgan Securities Inc., as sole lead arranger and bookrunning manager (filed as Exhibit 4.3 to the Form 10-K of Park-Ohio Holdings Corp. filed on March 16, 2022, SEC File No. 000-03134 and incorporated herein by reference and made a part hereof).

Exhibit

- 4.9 Amendment No. 7 to the Seventh Amended and Restated Credit Agreement, dated June 2, 2022, Park-Ohio Industries, Inc., RB&W Corporation of Canada, the European Borrowers (as defined therein) party thereto, the other Loan Parties (as defined therein), the Lenders (as defined therein), JPMorgan Chase Bank, N.A., as administrative agent, JPMorgan Chase Bank, N.A., Toronto Branch, as Canadian agent, J.P. Morgan Europe Limited, as European agent and J.P. Morgan Securities Inc., as sole lead arranger and bookrunning manager (filed as Exhibit 4.1 to the Form 10-Q of Park-Ohio Holdings Corp. filed on August 3, 2022, SEC File No. 000-03134 and incorporated herein by reference and made a part hereof).
- 4.10 Consent and Amendment No. 8 to the Seventh Amended and Restated Credit Agreement, dated September 13, 2023, among Park-Ohio Industries, Inc., RB&W Corporation of Canada, the European Borrowers (as defined therein) party thereto, the other Loan Parties (as defined therein), the Lenders (as defined therein), JPMorgan Chase Bank, N.A., as administrative agent, JPMorgan Chase Bank, N.A., Toronto Branch, as Canadian agent, J.P. Morgan Europe Limited, as European agent and J.P. Morgan Securities Inc., as sole lead arranger and bookrunning manager (filed as Exhibit 4.1 to Form 8-K of Park-Ohio Holdings Corp. filed on September 18, 2023, SEC File No. 000-03134 and incorporated herein by reference).
- 4.11 Amendment No. 9 to the Seventh Amended and Restated Credit Agreement, dated April 10, 2024, Park-Ohio Industries, Inc., RB&W Corporation of Canada, the European Borrowers (as defined therein) party thereto, the other Loan Parties (as defined therein), the Lenders (as defined therein), JPMorgan Chase Bank, N.A., as administrative agent, JPMorgan Chase Bank, N.A., Toronto Branch, as Canadian agent, J.P. Morgan Europe Limited, as European agent and J.P. Morgan Securities Inc., as sole lead arranger and bookrunning manager (filed as Exhibit 4.1 to the Form 10-Q of Park-Ohio Holdings Corp. filed on August 8, 2024, SEC File No. 000-03134 and incorporated herein by reference and made a part hereof).
- 4.12 Description of Common Stock (filed as Exhibit 4.3 to the Form 10-K of Park-Ohio Holdings Corp. filed on March 12, 2020, SEC File No. 000-03134 and incorporated herein by reference and made a part hereof)
- 10.1 Form of Indemnification Agreement entered into between Park-Ohio Holdings Corp. and each of its directors and certain officers (filed as Exhibit 10.1 to the Form 10-K of Park-Ohio Holdings Corp. for the year ended December 31, 1998, SEC File No. 000-03134 and incorporated by reference and made a part hereof)
- 10.2* 2015 Equity and Incentive Compensation Plan (filed as Exhibit 4.4 to Form S-8 of Park-Ohio Holdings Corp., filed on June 4, 2015, SEC File No. 333-204713 and incorporated by reference and made a part hereof)
- 10.3* 2018 Equity and Incentive Compensation Plan (filed as Exhibit 4.4 to Form S-8 of Park-Ohio Holdings Corp., filed on June 27, 2018, SEC File No. 333-225915 and incorporated by reference and made a part hereof)
- 10.4* 2021 Equity and Incentive Compensation Plan (Amended and Restated Effective May 17, 2023) (filed as Exhibit 4.3 to Form S-8 of Park-Ohio Holdings Corp., filed on May 18, 2023, SEC File No. 333-272137 and incorporated by reference and made a part hereof)
- 10.5* Form of Restricted Share Agreement between the Company and each non-employee director (filed as Exhibit 10.1 to Form 8-K of Park-Ohio Holdings Corp., filed on January 25, 2005, SEC File No. 000-03134 and incorporated herein by reference and made a part hereof)
- 10.6* Form of Restricted Share Agreement for Employees (filed as Exhibit 10.1 to Form 10-Q for Park-Ohio Holdings Corp. for the quarter ended September 30, 2006, SEC File No. 000-03134 and incorporated herein by reference and made a part hereof)
- 10.7* Form of Incentive Stock Option Agreement (filed as Exhibit 10.5 to Form 10-K of Park-Ohio Holdings Corp. for the year ended December 31, 2004, SEC File No. 000-03134 and incorporated by reference and made a part hereof)
- 10.8* Form of Non-Statutory Stock Option Agreement (filed as Exhibit 10.6 to Form 10-K of Park-Ohio Holdings Corp. for the year ended December 31, 2004, SEC File No. 000-03134 and incorporated herein by reference and made a part hereof)

Exhibit	
10.9*	Park-Ohio Industries, Inc. Annual Cash Bonus Plan (filed as Exhibit 10.2 to the Form 10-Q for Park-Ohio Holdings Corp, filed August 10, 2015, SEC File No. 000-03134 and incorporated by reference and made a part hereof)
10.10*	Form of Performance Based Restricted Share Agreement (filed as Exhibit 10.1 to Form 10-Q of Park-Ohio Holdings Corp. filed August 10, 2015, SEC File No. 000-03134 and incorporated by reference and made a part hereof)
10.11*	Supplemental Executive Retirement Plan for Edward F. Crawford, effective as of March 10, 2008 (filed as Exhibit 10.9 to Form 10-K of Park-Ohio Holdings Corp. for the year ended December 31, 2007, SEC File No. 000-03134 and incorporated by reference and made a part hereof)
10.12*	Non-qualified Defined Contribution Retirement Benefit Letter Agreement for Edward F. Crawford, dated March 10, 2008 (filed as Exhibit 10.10 to Form 10-K of Park-Ohio Holdings Corp. for the year ended December 31, 2007, SEC File No. 000-03134 and incorporated by reference and made a part hereof)
10.13*	2009 Director Supplemental Defined Contribution Plan of Park-Ohio Holdings Corp. (Filed as Exhibit 10 to Form 10-Q of Park-Ohio Holdings Corp. filed May 10, 2011, SEC File No. 000-03134 and incorporated by reference and made a part hereof)
19.1	Insider Trading Policy
21.1	List of Subsidiaries of Park-Ohio Holdings Corp.
23.1	Consent of Independent Registered Public Accounting Firm
24.1	Power of Attorney
31.1	Principal Executive Officer's Certification Pursuant to Section 302 of the Sarbanes-Oxley Act of 2002
31.2	Principal Financial Officer's Certification Pursuant to Section 302 of the Sarbanes-Oxley Act of 2002
32.1	Certification requirement under Section 906 of the Sarbanes-Oxley Act of 2002
97.1	Policy relating to recovery of erroneously awarded compensation (filed as Exhibit 97.1 to Form 10-K of the Park-Ohio Holdings Corp. filed March 6, 2024, SEC File No. 000-03134 and incorporated by reference and made a part of hereof)
101.INS	Inline XBRL Instance Document
101.SCH	Inline XBRL Taxonomy Extension Schema Document
101.CAL	Inline XBRL Taxonomy Extension Calculation Linkbase Document
101.DEF	Inline XBRL Taxonomy Extension Label Linkbase Document
101.LAB	Inline XBRL Taxonomy Extension Presentation Linkbase Document
101.PRE	Inline XBRL Taxonomy Extension Definition Linkbase Document
104	Cover Page Interactive Data File (embedded within the Inline XBRL document)

* Reflects management contract or other compensatory arrangement required to be filed as an exhibit pursuant to Item 15(c) of this Report.

Item 16. Form 10-K Summary

None.

SIGNATURES

Pursuant to the requirements of the Securities Exchange Act of 1934, the registrant has duly caused this report to be signed on its behalf by the undersigned thereunto duly authorized.

Date: March 6, 2025

PARK-OHIO HOLDINGS CORP.

(Registrant)

By: /s/ Patrick W. Fogarty
 Name: Patrick W. Fogarty
 Title: Vice President and Chief Financial Officer
 (Principal Financial and Accounting Officer)

Pursuant to the requirements of the Securities Exchange Act of 1934, this report has been signed by the following persons in the capacities and on the dates indicated.

*	Chairman of the Board, Chief Executive Officer	}	March 6, 2025
Matthew V. Crawford	and President (Principal Executive Officer)		
*	Vice President and Chief Financial Officer		
Patrick W. Fogarty	(Principal Financial and Accounting Officer)		
*	Director		
Patrick V. Auletta			
*	Director		
Edward F. Crawford			
*	Director		
John D. Grampa			
*	Director		
Howard W. Hanna, IV			
*	Director		
Dan T. Moore, III			
*	Director		
Ronna Romney			
*	Director		
Steven H. Rosen			
*	Director		
James W. Wert			

* The undersigned, pursuant to a Power of Attorney executed by each of the directors and officers identified above and filed with the Securities and Exchange Commission, by signing his name hereto, does hereby sign and execute this report on behalf of each of the persons noted above, in the capacities indicated.

March 6, 2025

By: /s/ ROBERT D. VILSACK
 Robert D. Vilsack, Chief Legal and Administrative
 Officer, Corporate Secretary

**PRINCIPAL EXECUTIVE OFFICER'S CERTIFICATIONS
PURSUANT TO SECTION 302 OF THE SARBANES-OXLEY ACT OF 2002**

I, Matthew V. Crawford, certify that:

1. I have reviewed this annual report on Form 10-K of Park-Ohio Holdings Corp.;
2. Based on my knowledge, this report does not contain any untrue statement of a material fact or omit to state a material fact necessary to make the statements made, in light of the circumstances under which such statements were made, not misleading with respect to the period covered by this report;
3. Based on my knowledge, the financial statements, and other financial information included in this report, fairly present in all material respects the financial condition, results of operations and cash flows of the registrant as of, and for, the periods presented in this report;
4. The registrant's other certifying officer and I are responsible for establishing and maintaining disclosure controls and procedures (as defined in Exchange Act Rules 13a-15(e) and 15d-15(e)) and internal control over financial reporting (as defined in Exchange Act Rules 13a-15(f) and 15d-15(f)) for the registrant and have:
 - a. Designed such disclosure controls and procedures, or caused such disclosure controls and procedures to be designed under our supervision, to ensure that material information relating to the registrant, including its consolidated subsidiaries, is made known to us by others within those entities, particularly during the period in which this report is being prepared;
 - b. Designed such internal control over financial reporting, or caused such internal control over financial reporting to be designed under our supervision, to provide reasonable assurance regarding the reliability of financial reporting and the preparation of financial statements for external purposes in accordance with generally accepted accounting principles;
 - c. Evaluated the effectiveness of the registrant's disclosure controls and procedures and presented in this report our conclusions about the effectiveness of the disclosure controls and procedures, as of the end of the period covered by this report based on such evaluation; and
 - d. Disclosed in this report any change in the registrant's internal control over financial reporting that occurred during the registrant's most recent fiscal quarter (the registrant's fourth fiscal quarter in the case of an annual report) that has materially affected, or is reasonably likely to materially affect, the registrant's internal control over financial reporting; and
5. The registrant's other certifying officer and I have disclosed, based on our most recent evaluation of internal control over financial reporting, to the registrant's auditors and the audit committee of the registrant's board of directors (or persons performing the equivalent functions):
 - a. All significant deficiencies and material weaknesses in the design or operation of internal control over financial reporting which are reasonably likely to adversely affect the registrant's ability to record, process, summarize and report financial information; and
 - b. Any fraud, whether or not material, that involves management or other employees who have a significant role in the registrant's internal control over financial reporting.

By: /s/ Matthew V. Crawford
Name: Matthew V. Crawford
Title: Chairman of the Board, Chief Executive
Officer and President

Dated: March 6, 2025

**PRINCIPAL EXECUTIVE OFFICER'S CERTIFICATIONS
PURSUANT TO SECTION 302 OF THE SARBANES-OXLEY ACT OF 2002**

I, Patrick W. Fogarty, certify that:

1. I have reviewed this annual report on Form 10-K of Park-Ohio Holdings Corp.;
2. Based on my knowledge, this report does not contain any untrue statement of a material fact or omit to state a material fact necessary to make the statements made, in light of the circumstances under which such statements were made, not misleading with respect to the period covered by this report;
3. Based on my knowledge, the financial statements, and other financial information included in this report, fairly present in all material respects the financial condition, results of operations and cash flows of the registrant as of, and for, the periods presented in this report;
4. The registrant's other certifying officer and I are responsible for establishing and maintaining disclosure controls and procedures (as defined in Exchange Act Rules 13a-15(e) and 15d-15(e)) and internal control over financial reporting (as defined in Exchange Act Rules 13a-15(f) and 15d-15(f)) for the registrant and have:
 - a. Designed such disclosure controls and procedures, or caused such disclosure controls and procedures to be designed under our supervision, to ensure that material information relating to the registrant, including its consolidated subsidiaries, is made known to us by others within those entities, particularly during the period in which this report is being prepared;
 - b. Designed such internal control over financial reporting, or caused such internal control over financial reporting to be designed under our supervision, to provide reasonable assurance regarding the reliability of financial reporting and the preparation of financial statements for external purposes in accordance with generally accepted accounting principles;
 - c. Evaluated the effectiveness of the registrant's disclosure controls and procedures and presented in this report our conclusions about the effectiveness of the disclosure controls and procedures, as of the end of the period covered by this report based on such evaluation; and
 - d. Disclosed in this report any change in the registrant's internal control over financial reporting that occurred during the registrant's most recent fiscal quarter (the registrant's fourth fiscal quarter in the case of an annual report) that has materially affected, or is reasonably likely to materially affect, the registrant's internal control over financial reporting; and
5. The registrant's other certifying officer and I have disclosed, based on our most recent evaluation of internal control over financial reporting, to the registrant's auditors and the audit committee of the registrant's board of directors (or persons performing the equivalent functions):
 - a. All significant deficiencies and material weaknesses in the design or operation of internal control over financial reporting which are reasonably likely to adversely affect the registrant's ability to record, process, summarize and report financial information; and
 - b. Any fraud, whether or not material, that involves management or other employees who have a significant role in the registrant's internal control over financial reporting.

By: /s/ Patrick W. Fogarty
Name: Patrick W. Fogarty
Title: Vice President and Chief Financial Officer

Dated: March 6, 2025

**CERTIFICATION PURSUANT TO
18 U.S.C. SECTION 1350,
AS ADOPTED PURSUANT TO
SECTION 906 OF THE SARBANES-OXLEY ACT OF 2002**

In connection with the Annual Report of Park-Ohio Holdings Corp. (the “Company”) on Form 10-K for the period ended December 31, 2024, as filed with the Securities and Exchange Commission on the date hereof (the “Report”), each of the undersigned officers of the Company certifies, pursuant to 18 U.S.C. § 1350, as adopted pursuant to § 906 of the Sarbanes-Oxley Act of 2002, that, to such officer’s knowledge:

- (1) The Report fully complies with the requirements of Section 13(a) or 15(d) of the Securities Exchange Act of 1934; and
- (2) The information contained in the Report fairly presents, in all material respects, the financial condition and results of operations of the Company as of the dates and for the periods expressed in the Report.

By: /s/ Matthew V. Crawford
Name: Matthew V. Crawford
Title: Chairman of the Board, Chief Executive Officer and President

By: /s/ Patrick W. Fogarty
Name: Patrick W. Fogarty
Title: Vice President and Chief Financial Officer

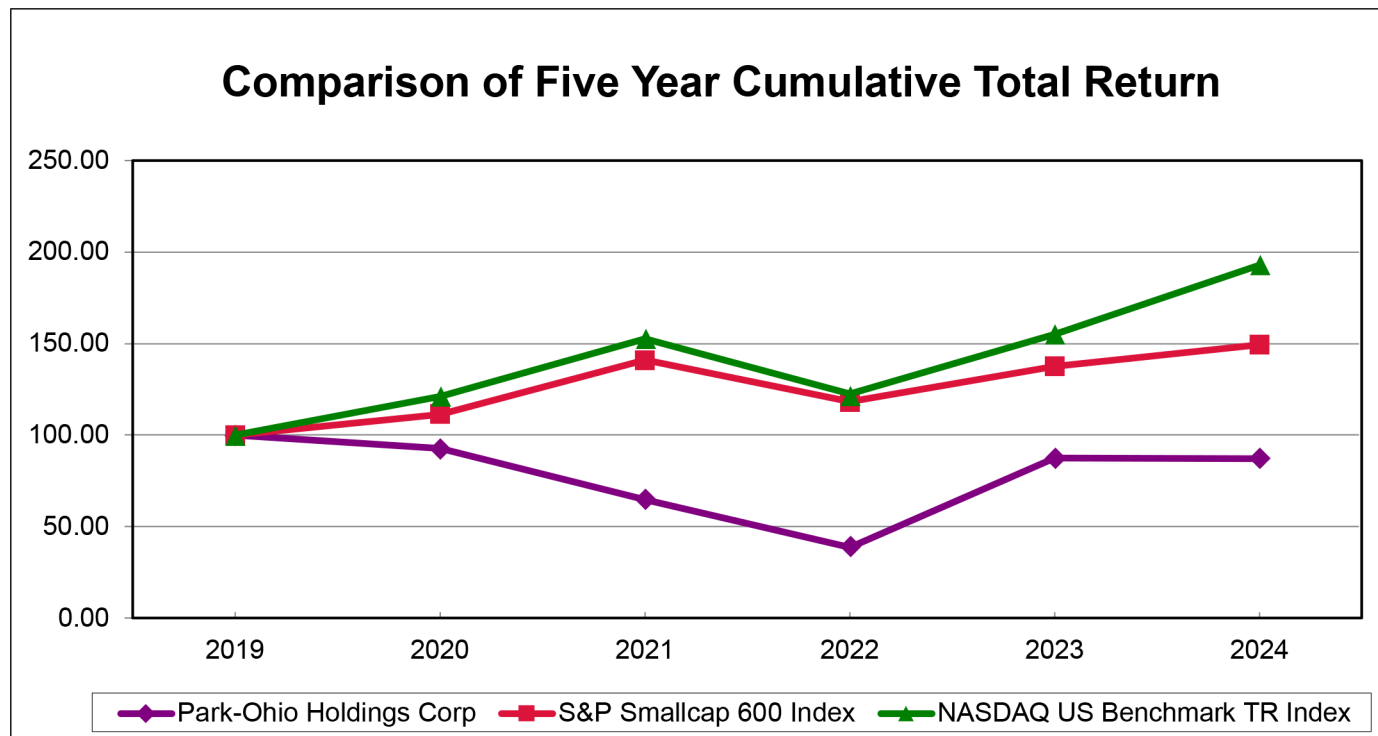
Dated: March 6, 2025

The foregoing certification is being furnished solely pursuant to 18 U.S.C. § 1350 and is not being filed as part of the Report or as a separate disclosure document.

ParkOhio Performance Graph

The following graph compares the cumulative total return of ParkOhio's common stock for the five-year period ending December 31, 2024, against the cumulative total return of the S&P SmallCap 600 Index (broad market comparison) and the NASDAQ U.S. Benchmark TR Index (U.S. companies) (line of business comparison). The graph and table assume \$100 was invested on December 31, 2019 and all dividends were reinvested.

Produced on 02/27/2025 including data to 12/31/2024



LEGEND

Symbol	Total Return Index For:	12/2019	12/2020	12/2021	12/2022	12/2023	12/2024
◆	Park-Ohio Holdings Corp	100.00	92.67	64.62	38.65	87.66	86.97
■	S&P Smallcap 600 Index	100.00	111.29	141.13	118.41	137.42	149.37
▲	NASDAQ US Benchmark TR Index	100.00	121.27	152.67	122.55	154.93	192.86

Notes:

- The lines represent monthly index levels derived from compounded daily returns that include all dividends.
- The indexes are reweighted daily, using the market capitalization on the previous trading day.
- If the monthly interval, based on the fiscal year-end, is not a trading day, the preceding trading day is used.
- The index level for all series was set to \$100.00 on 12/31/2019.

Board of Directors

Matthew V. Crawford ^{(a)(d)}
Chairman, Chief Executive Officer
and President

Patrick V. Auletta ^(a)
President Emeritus
KeyBank National Association

Edward F. Crawford
Director
Former US Ambassador to Ireland
Former Chairman and CEO of ParkOhio

John D. Grampa ^(b)
Retired Chief Financial Officer
Materion Corporation

Howard W. Hanna IV ^(b)
President
Howard Hanna Real Estate Services

Dan T. Moore III ^{(d)(e)}
Chief Executive Officer
Dan T. Moore Co.

Ronna Romney ^{(a)(c)(e)}
Director
Molina Healthcare, Inc.

Steven H. Rosen ^{(b)(c)}
Co-Chief Executive Officer
Resilience Capital Partners

James W. Wert ^{(b)(e)}
Chairman Advisory Board and Senior Client Advisor
CM Wealth Advisors, Inc.

(a) Executive Committee
(b) Audit Committee
(c) Compensation Committee
(d) Long-Range Planning Committee
(e) Nominating and Corporate Governance Committee

Officers

Matthew V. Crawford
Chairman, Chief Executive Officer and President

Patrick W. Fogarty
Vice President and Chief Financial Officer

Robert D. Vilsack
Chief Legal and Administrative Officer, Secretary

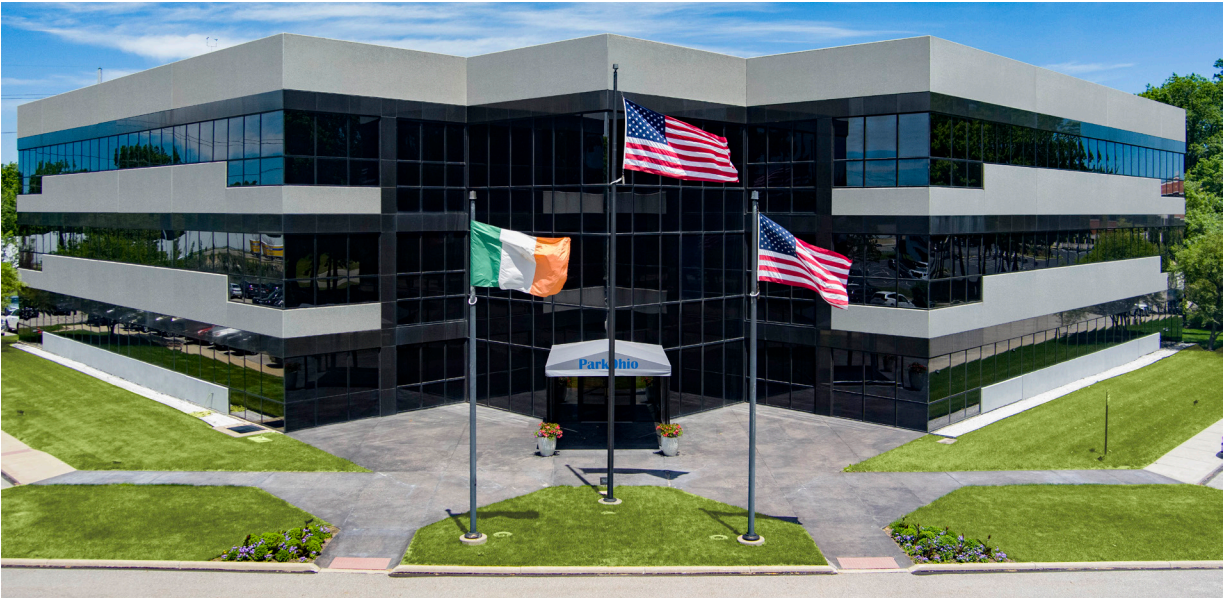
Shareholder Information and Press Releases

ParkOhio files Forms 10-K and 10-Q with the Securities and Exchange Commission. Shareholders may obtain copies of these reports, including ParkOhio's Annual Report on Form 10-K for 2024, and copies of ParkOhio's Annual Report to Shareholders, without charge, by accessing the Company's website at www.pkoh.com or by writing or calling:

Corporate Secretary
Park-Ohio Holdings Corp.
6065 Parkland Boulevard
Cleveland, Ohio 44124

(440) 947-2000
www.pkoh.com

ParkOhio's recent news releases may also be accessed through its website.



ParkOhio World Headquarters

Park-Ohio Holdings Corp. ~ 6065 Parkland Boulevard ~ Cleveland, OH 44124 ~ 440-947-2000 ~ www.pkoh.com