

1

S1 - Sage Tower

Drawn by: Ralf Schemmann

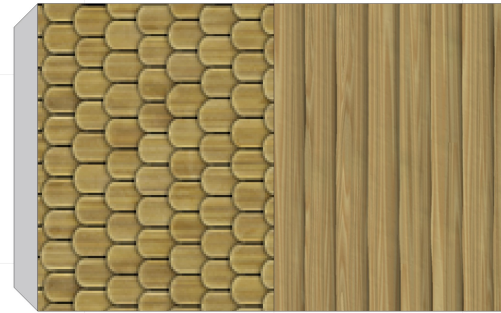
15mm

20mm

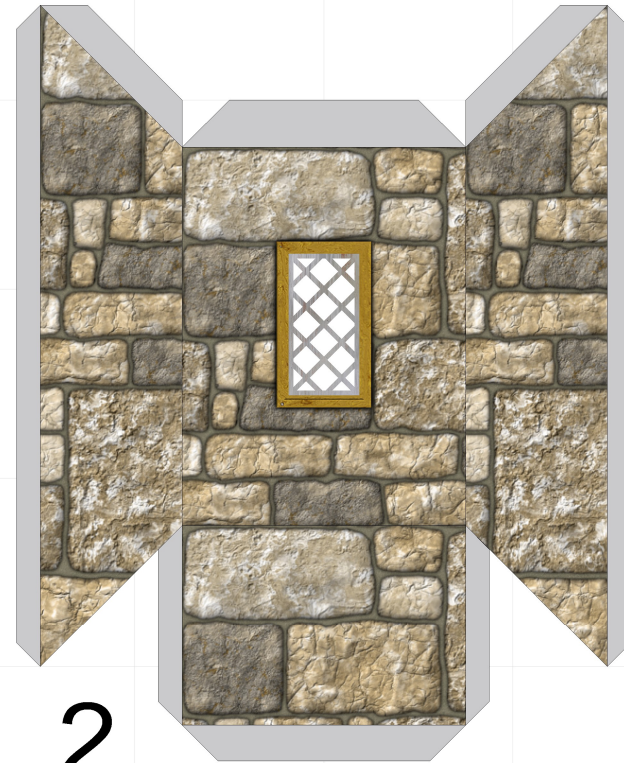
25mm

28mm

30mm



2a



2

Created in Dioramas 3

1 square = 5 feet



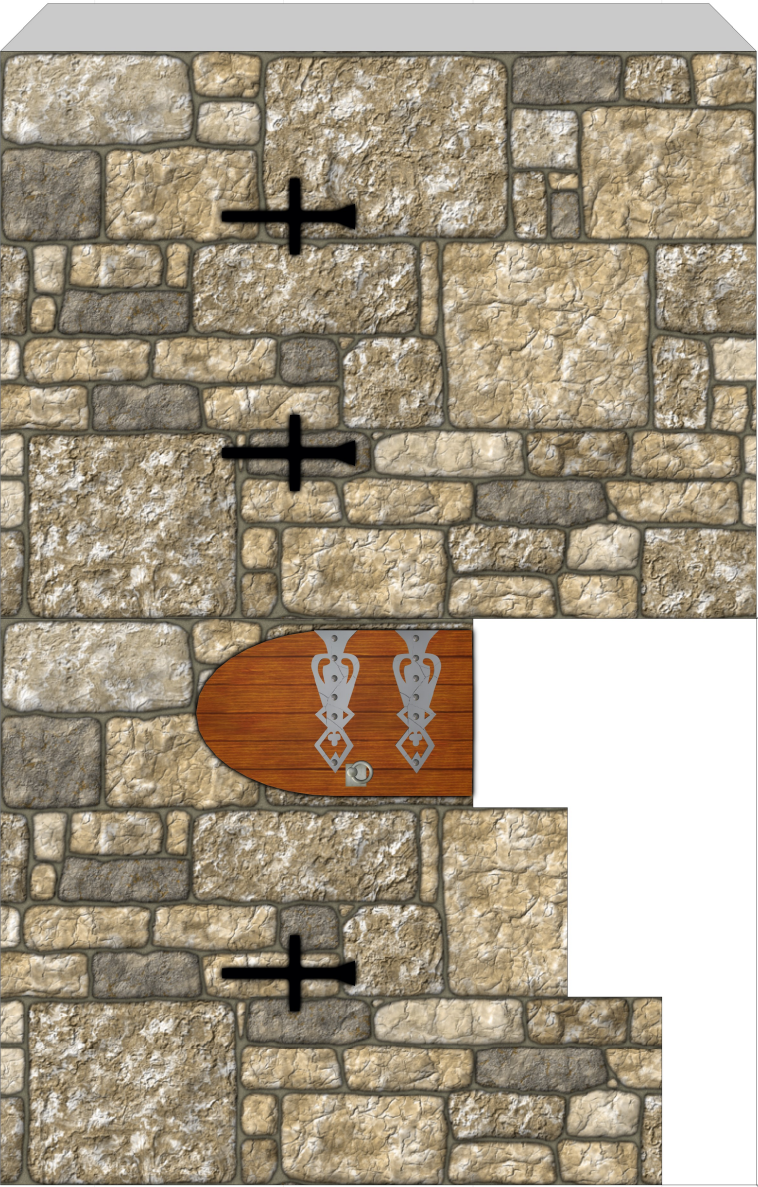
S2 - Sa

15m

Miniature model size (mm)

30 28 25 20 15

Bar length to each notch measures 2" (51mm) when printed at correct scale



3

S2 - Sage Tower

Drawn by: Ralf Schemmann

Created in Dioramas 3

1 square = 5 feet

15mm

20mm

25mm

28mm

30mm

1

2

3

4

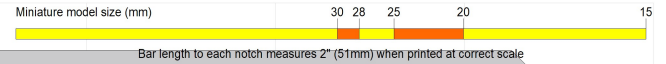
5

6

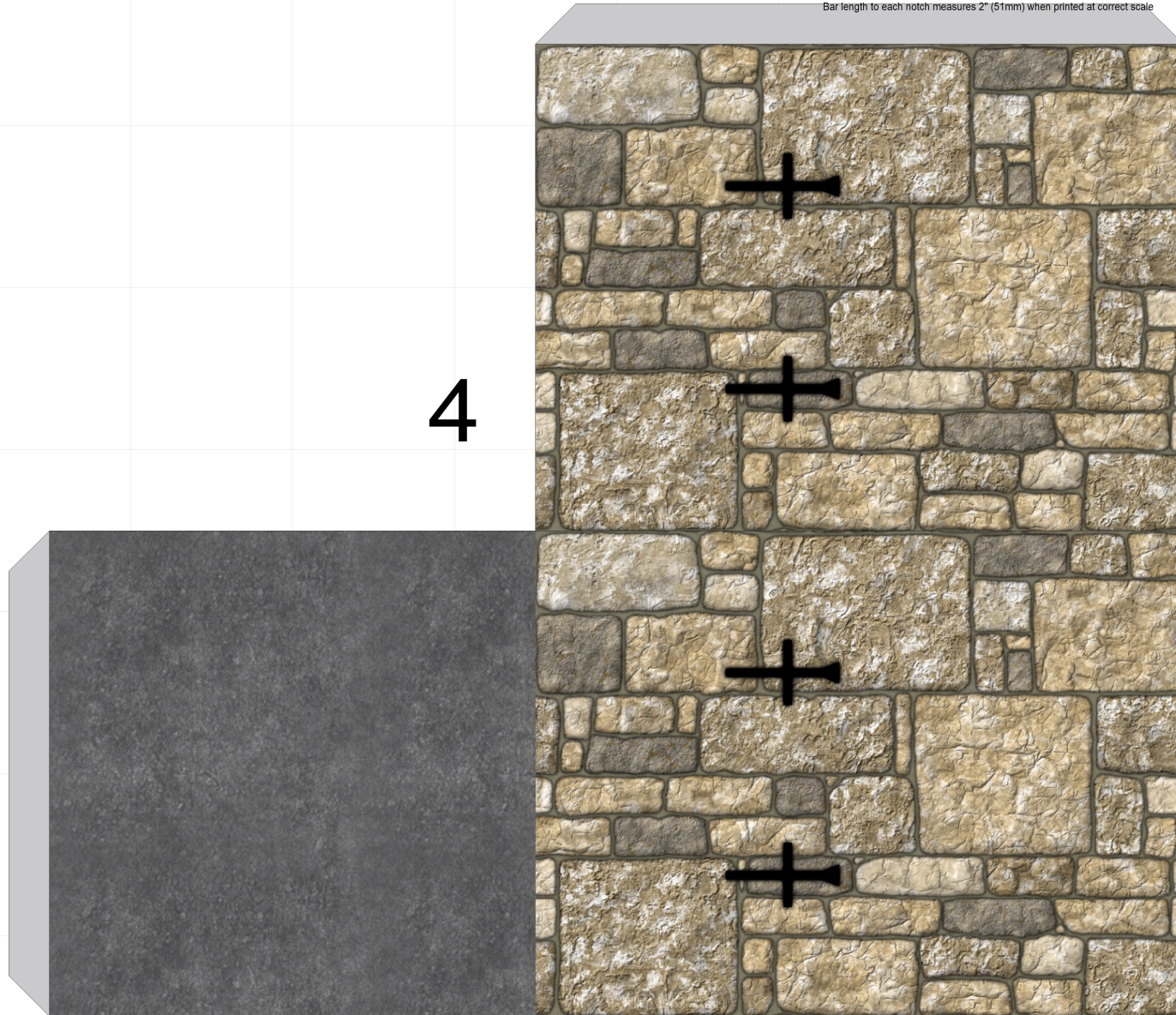
7

8





4



S3 - Sage Tower

Drawn by: Ralf Schemmann

Created in Dioramas 3

1 square = 5 feet

15mm

20mm

25mm

28mm

30mm

1

2

3

4

5

6

7

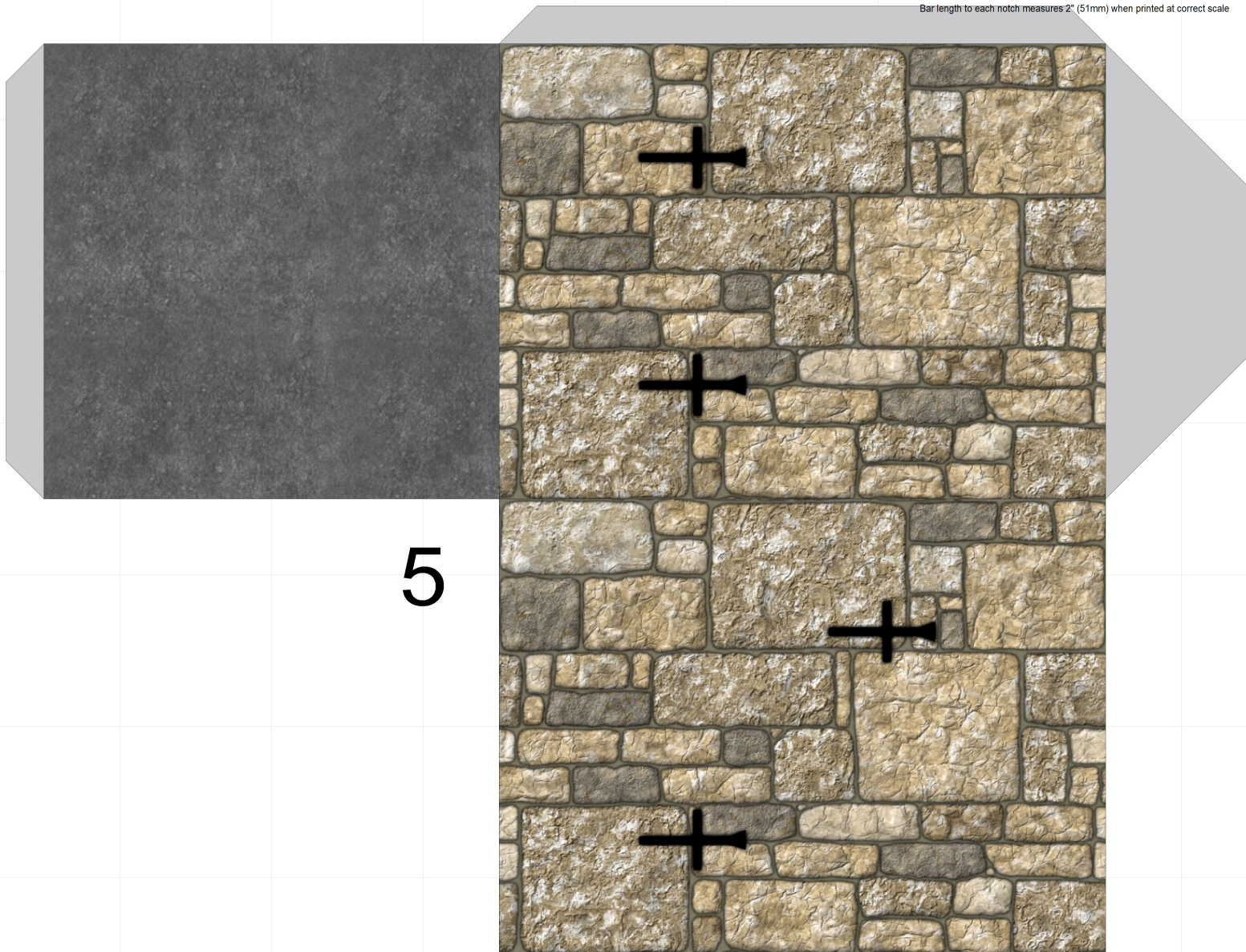
8

S4 - Sa

15m



Bar length to each notch measures 2" (51mm) when printed at correct scale



= 5 feet

S4 - Sage Tower

Drawn by: Ralf Schemmann

Created in Dioramas 3

1 square = 5 feet

15mm

20mm

25mm

28mm

30mm

1

2

3

4

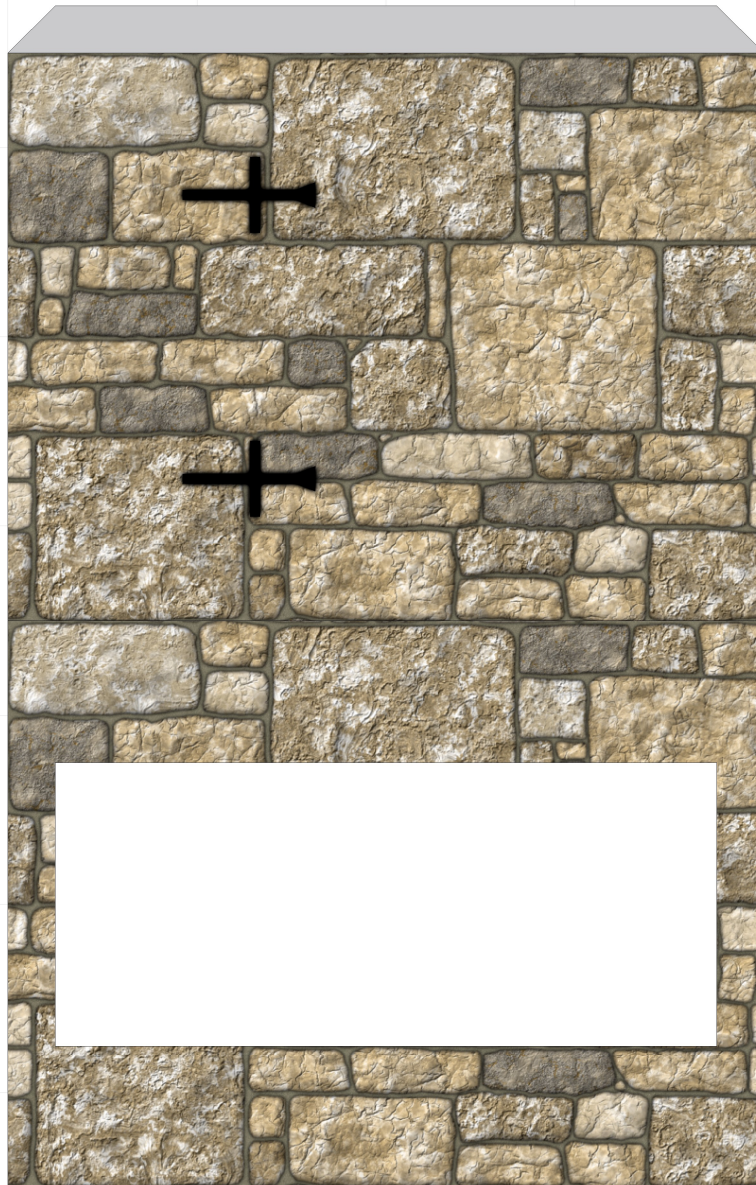
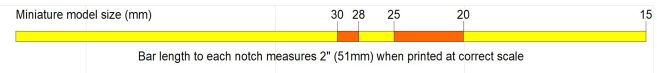
5

6

7

8





6

S5 - Sage Tower

Drawn by: Ralf Schemmann

Created in Dioramas 3

1 square = 5 feet

15mm

20mm

25mm

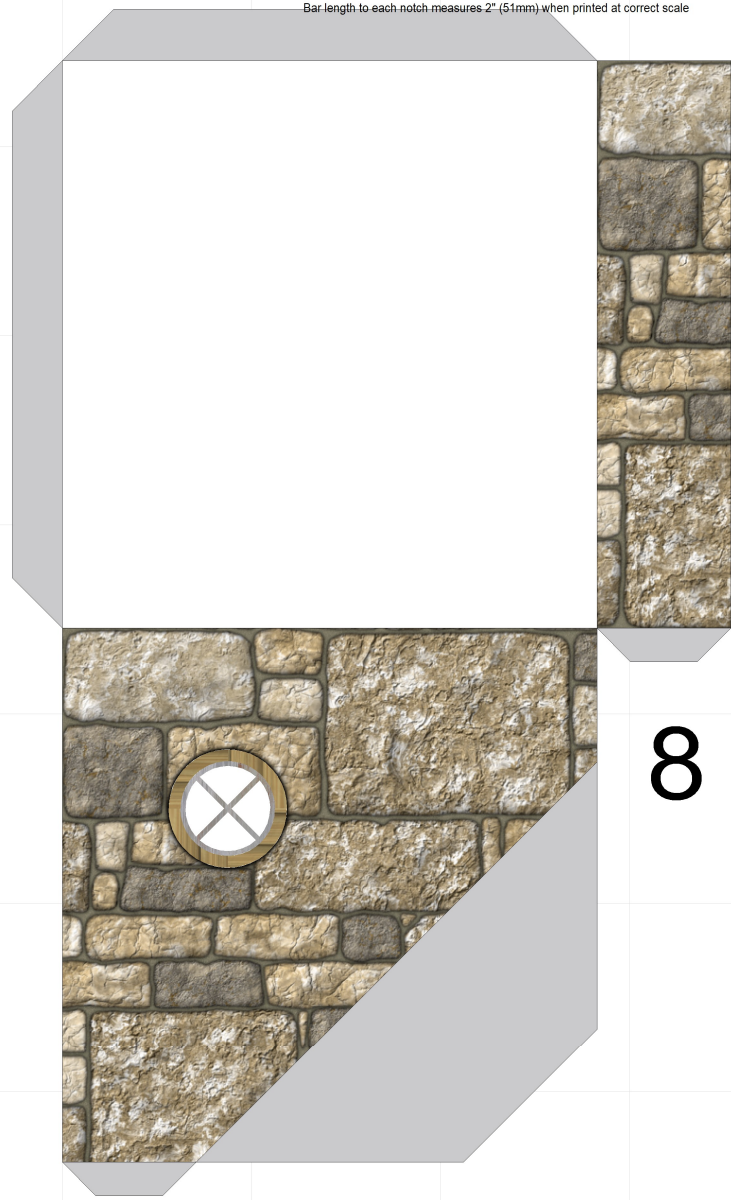
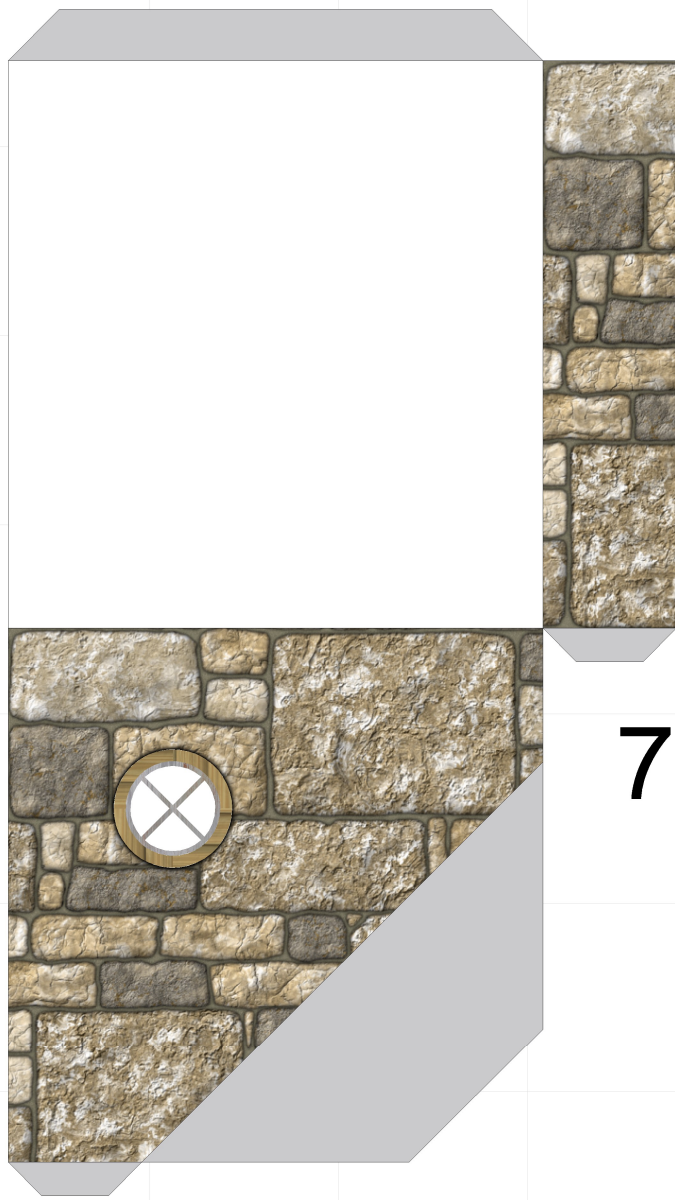
28mm

30mm



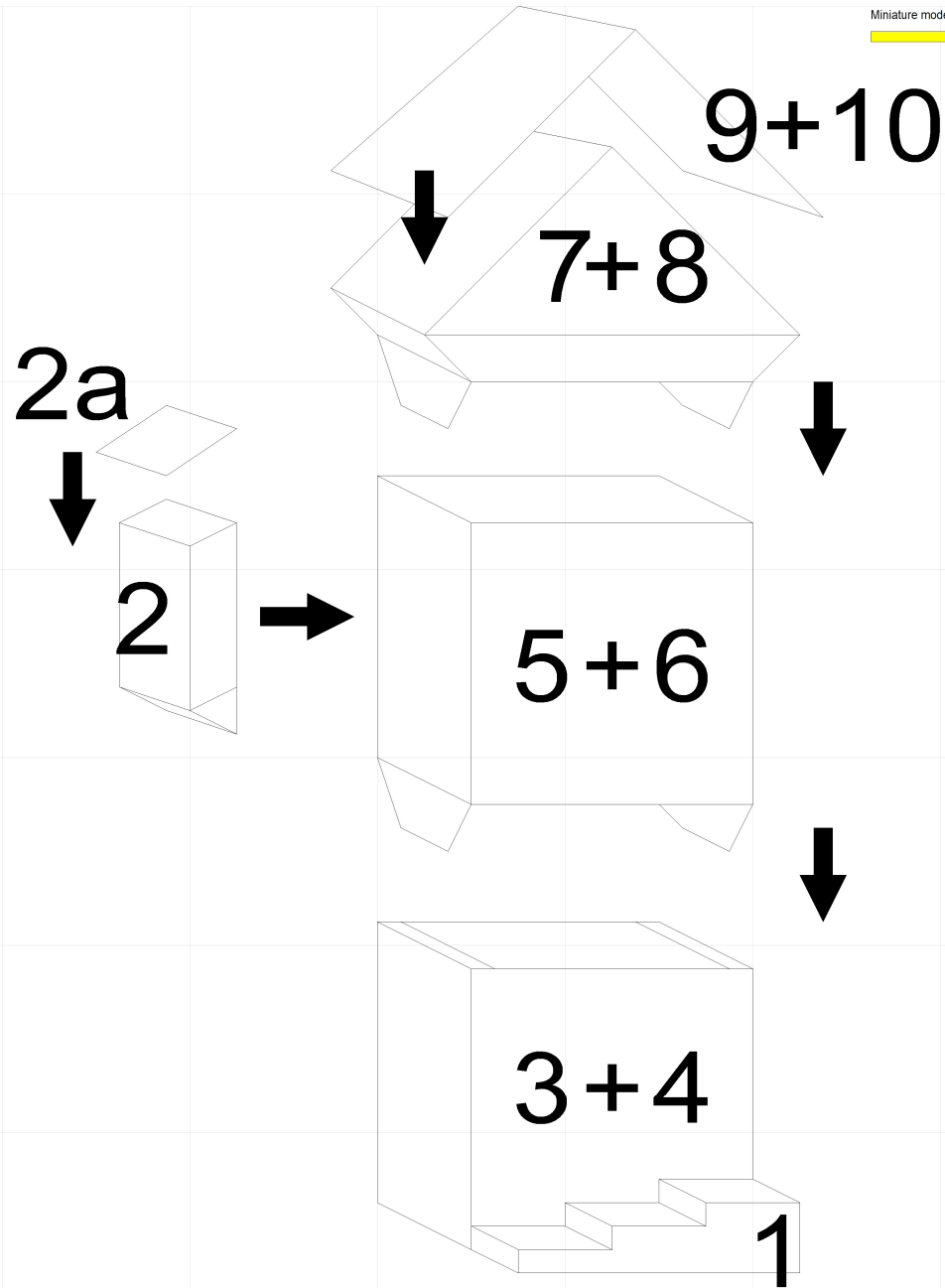
S6 - Sa

15m









0

5 feet

S8 - Sage Tower

Drawn by: Ralf Schemmann

Created in Dioramas 3

1 square = 5 feet

8

15mm

20mm

25mm

28mm

30mm

1

2

3

4

5

6

7

8