

Image Mats · Message Mats · Traditional Mats · Anti-Fatigue Mats · Specialty Mats



**MOUNTVILLE
MILLS INC.**

Your Complete Mat Source



Your Complete Mat Source

Mountville Mills has been manufacturing mats for the textile rental industry since 1963. By focusing exclusively on mats, Mountville offers the very best quality, service and marketing support. Mountville manufactures a complete range of rental, value lease and direct sale mats.

Mountville Mills believes in leadership through innovation and continually strives to better serve the needs of the textile rental industry. Mountville's mission, through the application of superior customer service and manufacturing systems, is to be the leading supplier of floor mats to the textile rental industry worldwide and to develop and market innovative new products. This statement summarizes the beliefs and performance of Mountville Mills.



100% Customer Satisfaction

Mountville Mills offers an unconditional customer satisfaction guarantee. If, for any reason, you are not 100% satisfied with your products, Mountville will replace the mats or refund your money.



NFSI

A number of Mountville's mats have been submitted to the National Floor Safety Institute (NFSI) to test the Static Coefficient of Friction and real world performance. Products exceeding NFSI's acceptable level of slip resistance are classified as "high-traction" and are designated NFSI certified.



Made In the USA

The vast majority of products sold by Mountville Mills are manufactured in either our Dalton, Georgia or LaGrange, Georgia production facilities. At least 99.7% of Mountville's sales are of items manufactured in Georgia.



Contents

4	Marketing Support
6	Image Mat Collection
8	Classic Impressions HD™
10	Classic Impressions™
11	CompuTuft™ and CompuTuft Hi Res™
12	HogHeaven Impressions™
13	SuperScrape Signature™
14	SuperScrape Impressions™
16	Waterhog Inlay™
17	Waterhog Signature™
18	Message Mat Collection
20	Message Mats™
21	SuperScrape Sign™
22	Waterhog Sign™
23	Wildlife Mats
24	Traditional Mat Collection
26	Classic Brush™
27	Classic Mats™ and Classic Carpets™
28	Classic Solutions™ and Solutions Plus™
29	Eco Solutions™
30	MicroGuard™
31	Plush™
32	Unique Designs™
33	Waterhog Plus™
34	Anti-Fatigue Mat Collection
36	AirFlex™
37	Comfort Flow™ and Comfort Scrape™
38	Complete Comfort™
39	Cushion Max™
40	Cushion Station™
41	HogHeaven™ Collection
43	Linkable Tile Products
44	Specialty Mat Collection
46	Action Mats™ and Oil Magnet™
47	Restroom Service™
48	SuperScrape™
49	SuperScrape Eco™
50	Waterhog™ Classic and Fashion
51	Waterhog™ Eco Elite and Premier
52	Waterhog™ Eco Grand Elite and Premier
54	Accessories

Marketing Support

Access a Wealth of Knowledge Anytime, Anywhere

With Mountville's Online, Interactive Training Videos



Mountville is now offering interactive, video-based mat training for its entire product line. This in-depth overview of the features, benefits, applications, and selling tips for each product allows you to quickly become up to speed on all the products and services Mountville has to offer. Contact your Sales Representative for more information!

Mountville Mills offers extensive sales and marketing support for both your professional sales team and your route service representatives to help increase your mat revenue and profits. This support includes: mat promotions, custom brochures and sales support materials.

Custom Brochures

Mountville will customize product brochures with your logo, address and phone number as well as remove colors and sizes not offered by your company. Upon completion, you will be given a PDF or file type of your choosing.

Custom Chain Sets

Mountville offers you a variety of sample chain and pom sets. Chain sets can also be customized with your logo and the colors you choose.

Custom Logo Mat Proof Sketches

Custom logo mat proof sketches are available with your company's name, logo, address and telephone number on the bottom of your Logo Mat proof sketches. This service personalizes your presentations and enhances your ability to close logo mat business.

Your Account Feature

Mountville's website allows you to: order mats online, print a copy of each invoice, print a proof of delivery, check the status of payables, generate reports, view logo mat proof sketches and view Mountville's library of over a million logo mat designs.

Online Training

This supplemental training will cover the basics to get you started in your role as a Mat Rental Salesperson.

Off the Route Training

Mountville's "Off the Route Training" program is designed to help your laundry generate revenue and profits by utilizing its team of sales professionals. Mountville Sales Representatives will work with your management team to develop mat sales contests tailored to meet your requirements. By stepping "Off the Route," Mountville will help educate and train your staff on how to best sample sell your mat service while identifying opportunities in the field.

Image Mat Collection

Classic Impressions HD™

Classic Impressions™

CompuTuft™ and CompuTuft Hi Res™

HogHeaven Impressions™

SuperScape Signature™

SuperScape Impressions™

Waterhog Inlay™

Waterhog Signature™





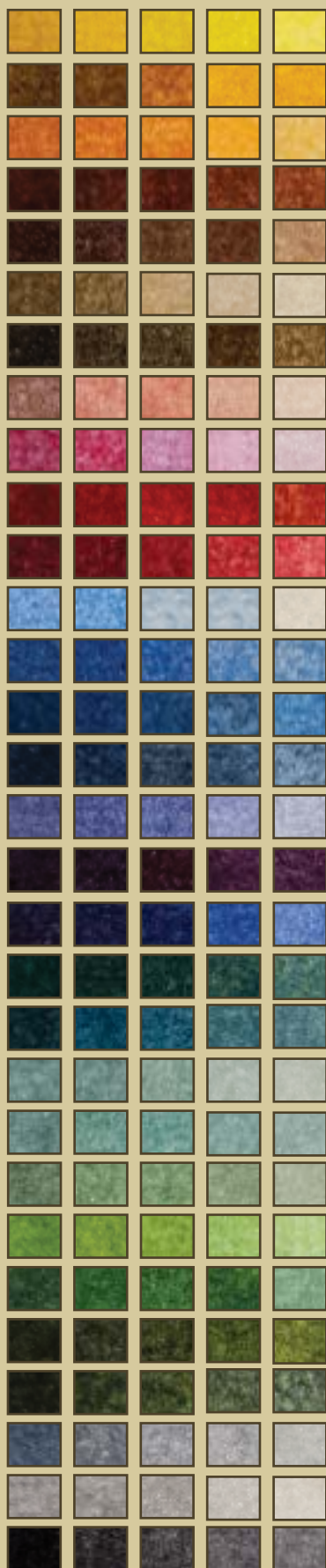
iPhone

Classic Impressions HD™

Indoor | Dust Control

Launderable





150 brilliant colors to choose from. See our website for additional detailed images and color names.



Standard Sizes:

2' x 3'
3' x 4', 3' x 5', 3' x 10'
4' x 6', 4' x 8'
5' x 8', 5' x 10'
6' x 10', 6' x 12'

Custom Sizes: Up to 40'

- Permanently printed, plush nylon surface.
- Photographic quality images.
- 100% Nitrile rubber backing for increased slip and skid resistance.
- Fully launderable.
- Ideal for high traffic, indoor applications.

Classic Impressions™



Indoor | Dust Control

Launderable

Aquamarine

Black

Burgundy

Chocolate

Dark Gold

Dark Grey

Emerald Green

Forest Green

Gold

Hot Pink

Light Blue

Moss Green

Navy

Orange

Pearl White*

Purple

Red

Rose

Royal Blue

Sandalwood

Silver

Suede

Turquoise

White Silver*

Yellow



- Digitally printed logo mats reproduce fine detail, fades and 3D images.
- 25 standard colors and over 300 accent colors available.
- Static dissipative nylon yarn treated with StainStopper™ Technology.
- 100% Nitrile rubber backing for increased slip and skid resistance.

Standard Sizes:

2' x 3'
3' x 4', 3' x 5', 3' x 10'
4' x 6', 4' x 8'
5' x 8', 5' x 10'
6' x 10', 6' x 12'

Custom Sizes: Up to 40'

CompuTuft™ and CompuTuft Hi Res™



Indoor | Dust Control

Launderable

Available in standard 24 oz yarn or high resolution 32 oz yarn

	Antique White*
	Bay Blue
	Black
	Bright Gold
	Bright Green
	Brown
	Clear Red
	Dark Green
	Deeper Navy
	Gold
	Golden Tan
	Grass Green
	Grey Metal
	Light Blue
	Moss Agate
	Olive Green
	Orange
	Pink Ibis
	Purple
	Silver
	Slate Grey
	Turquoise
	Wine

Standard Sizes:

2' x 3'
3' x 4', 3' x 5', 3' x 10'
4' x 6', 4' x 8'
5' x 8', 5' x 10'
6' x 10', 6' x 12'

Custom Sizes: Up to 40'

- Manufactured using our computerized MasterWeave™ tufted process.
- 23 colors available, with up to 6 colors per mat.
- Static dissipative, solution dyed nylon yarn is impervious to bleach, sunlight and repeated washing.
- 100% Nitrile rubber backing for increased slip and skid resistance.

*Not for use as background

HogHeaven Impressions™

Indoor | Anti-Fatigue

Non-Launderable

See page 15 for logo color selection

- Produced by molding a digitally printed thermo-plastic material into durable Nitrile rubber that resists cracking and curling.
- Photographic quality images have excellent tones and shades.
- 5/8" thick closed-cell cushion backing provides outstanding comfort.



Standard Sizes:

2' x 3'
3' x 5', 3' x 12'
4' x 6'

Custom sizes are
not available

SuperScrape Signature™

- Produced by molding a digitally printed thermo-plastic material into durable Nitrile rubber.
- Logo is placed in the lower right corner of the mat, keeping the imprint cleaner and out of heavy traffic.
- Fully launderable, lower cost alternative to SuperScrape Impressions™.

Indoor/Outdoor | Dust Control

Launderable

See page 15 for logo color selection



Standard Sizes:

3' x 5'
4' x 6'

Print Area: 6.8" x 13.5"

Custom sizes are
not available

SuperScrape Impressions™

Indoor/Outdoor | Dust Control

Launderable





For our customer's convenience, we have created a palette of 150 brilliant colors. See our website for additional detailed images and color names.



Standard Sizes:

2.5' x 3'
3' x 5', 3' x 10'
4' x 6', 4' x 8'
6' x 6', 6' x 8'

Custom sizes are not available

- Produced by molding a digitally printed thermo-plastic material into durable Nitrile rubber.
- Circular surface cleats make this mat multi-directional, effectively scraping tough dirt and grime off shoes from any angle.
- Manufactured with durable, anti-static Nitrile rubber that will not crack or curl.

Waterhog Inlay™



Indoor/Outdoor | Dust Control

Non-Launderable

Aquamarine*

Bluestone

Bordeaux

Camel

Charcoal

Dark Brown

Evergreen

Gold*

Light Green*

Medium Blue

Medium Brown

Medium Grey

Navy

Orange*

Purple*

Red / Black

Solid Red*

White*

Yellow*



- Created using a unique inlay process that can include up to 19 colors per mat.
- 100% UV resistant polypropylene fabric for indoor and outdoor use.
- Molded rubber backing resists curling and cracking in all types of weather.
- Rubber backing has up to 20% recycled content.
- Available in classic rubber borders or fashion fabric borders.

Standard Sizes:

2' x 3'
3' x 4', 3' x 5', 3' x 10'
4' x 6', 4' x 8', 4' x 10'
6' x 8', 6' x 12'

Custom Sizes: Up to 30'

Not available in 5' widths

*Only available in 3' and 4' width

Waterhog Signature™

- 3/8" thick, 100% UV resistant polypropylene fabric.
- Molded rubber backing resists curling and cracking in all types of weather.
- "Water Dam" border is designed to hold dirt and moisture.
- Lower cost alternative to Waterhog Inlay™.

Indoor/Outdoor | Dust Control

Non-Launderable

See page 16 for mat colors and page 15 for logo colors



Standard Sizes:

3' x 5'
4' x 6'

Print Area: 6.8" x 13.5"

Custom sizes are
not available

Message Mat Collection

Message Mats™

SuperScrape Sign™

Waterhog Sign™

Wildlife Mats





Message Mats™



Indoor | Dust Control

Launderable

Message Mats provide important messages while capturing tracked in dirt and moisture, reducing slip and fall accidents and maintaining your floor. Message Mats are available in our printed style using our state-of-the-art digital printer. There are a variety of themes available, including bilingual and English-only mats. Visit www.mountville.com for more information on Message Mats.

Décor
Drug Prevention
English/Spanish
Greeting
Holiday
Lottery
Patriotic
Pizza
Place Mats
Motivational
Quality
Safety
Supermarket

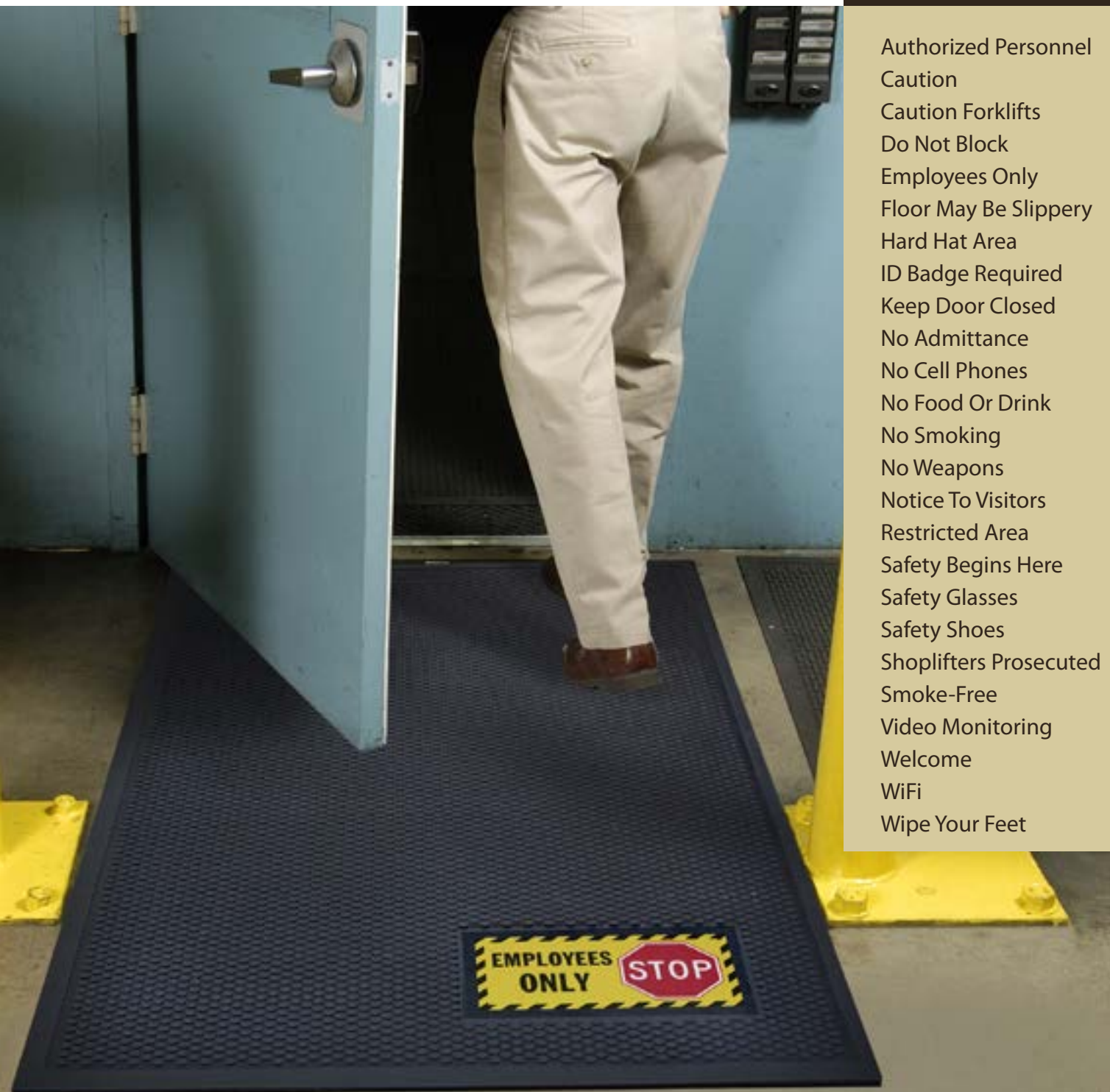


SuperScrape Sign™

- Promote safety with this fully launderable, all rubber mat.
- Sign is produced by molding a digitally printed thermo-plastic material into durable Nitrile rubber.
- These long-lasting mats perform in harsh environments and are grease, oil and chemical resistant.

Indoor/Outdoor | Dust Control

Launderable



Authorized Personnel
Caution
Caution Forklifts
Do Not Block
Employees Only
Floor May Be Slippery
Hard Hat Area
ID Badge Required
Keep Door Closed
No Admittance
No Cell Phones
No Food Or Drink
No Smoking
No Weapons
Notice To Visitors
Restricted Area
Safety Begins Here
Safety Glasses
Safety Shoes
Shoplifters Prosecuted
Smoke-Free
Video Monitoring
Welcome
WiFi
Wipe Your Feet

Waterhog Sign™

Indoor/Outdoor | Dust Control

Non-Launderable

See page 16 for mat colors

Authorized Personnel
Caution
Caution Forklifts
Do Not Block
Employees Only
Floor May Be Slippery
Hard Hat Area
ID Badge Required
Keep Door Closed
No Admittance
No Cell Phones
No Food Or Drink
No Smoking
No Weapons
Notice To Visitors
Restricted Area
Safety Begins Here
Safety Glasses
Safety Shoes
Shoplifters Prosecuted
Smoke-Free
Video Monitoring
Welcome
WiFi
Wipe Your Feet

- 3/8" thick, 100% UV resistant polypropylene fabric.
- Molded rubber backing resists curling and cracking in all types of weather.
- Sign is produced by molding a digitally printed thermo-plastic material into durable Nitrile rubber.
- "Water Dam" border is designed to hold dirt and moisture.



Wildlife Mats

Featuring artwork from five renowned Wild Wings® artists



- Enhance the décor of any business, including sporting good stores, hardware stores, lodges, restaurants and bars.
- Stop dirt and moisture at the door.
- Fully launderable with a Nitrile rubber backing.

Indoor | Dust Control

Launderable



Artist: David Maass
Geese

Artist: Rosemary Millette
Bear
Deer
Elk
Pheasants
Wild Turkeys
Wood Ducks

Artist: Scot Storm
Mallards

Artist: Mark Susinno
Trout

Artist: Sam Timm
Bass

Traditional Mat Collection

Classic Brush™

Classic Mats™

Classic Carpets™

Classic Solutions™

Solutions Plus™

Eco Solutions™

MicroGuard™

Plush™

Unique Designs™

Waterhog Plus™



Classic Brush™



Indoor | Dust Control

Launderable

* Available in 6' Widths
** Available in 5' and 6' widths

Garnet*

Onyx**

Quartz*

Sapphire*

Topaz*



- Extra-coarse nylon fibers combined with traditional solution dyed fibers create excellent scraping and wiping action for maximum soil stopping power.
- Impervious to bleach, sunlight and repeated washing.
- 100% Nitrile rubber backing for increased slip and skid resistance.

Standard Sizes:

2' x 3', 2.5' x 3', 2.5' x 4'
3' x 4', 3' x 5', 3' x 10'
4' x 6', 4' x 8'
6' x 10', 6' x 12'

Custom Sizes: Up to 40'

Classic Mats™ and Classic Carpets™



Indoor | Dust Control

Launderable

* Available in 5' Widths
** Available in 5' and 6' widths

Classic Mats

	Browntone**
	Cabot Grey**
	Charcoal**
	Chocolate*
	Cranberry
	Emerald Green
	Glen Green
	Grey
	Navy*
	Platinum*
	Red/Black**
	Silver
	Slate*
	Solid Red*
	Steel Blue
	Suede

Classic Carpets

	Autumn Brown
	Black Opal
	Blueberry Frost
	Burgundy Berry*
	Dark Granite**
	Midnight Blue*
	Stardust Grey

Standard Sizes:

2' x 3', 2.5' x 3', 2.5' x 4'
3' x 4', 3' x 5', 3' x 10'
4' x 6', 4' x 8'
5' x 8', 5' x 10', 5' x 12'
6' x 8', 6' x 10', 6' x 12'

Custom Sizes: Up to 40'

- High twist, heat-set nylon yarn construction resists packing and crushing. Dirt filters into the mat rather than remaining on top.
- Mat is static dissipative with StainStopper™ Technology.
- Yarn dyed with Perma-Dye™ dying technology for vibrant color.
- 100% Nitrile rubber backing for increased slip and skid resistance.

Classic Solutions™ and Solutions Plus™



Contains
Recycled
Content

Indoor | Dust Control

Launderable

* Available in 5' Widths
** Available in 5' and 6' widths
*** Available in 6' widths

Classic Solutions

Bay Blue

Black**

Black Mink*

Blue/Black*

Blue Mist

Brown/Black

Charcoal Heather**

Cheyenne Red

Dark Green*

Deeper Navy*

Golden Brown**

Midnight Grey**

Oxford Grey

Red Heather

Red Pepper***

Shadow Mist

Slate Grey**

Wine*

Solutions Plus

Brandywine

Brown Heather***

Cinnamon***

Confetti Grey**

Forest Green***

Navy Spice***

Quarry

Starry Night



- High twist, heat-set solution dyed nylon yarn resists crushing, traps dirt and extends performance life of the mat.
- Impervious to bleach, sunlight and repeated washing.
- 100% Nitrile rubber backing for increased slip and skid resistance.

Standard Sizes:

2' x 3', 2.5' x 3', 2.5' x 4'
3' x 4', 3' x 5', 3' x 10'
4' x 6', 4' x 8'
5' x 8', 5' x 10', 5' x 12'
6' x 8', 6' x 10', 6' x 12'

Custom Sizes: Up to 40'

Eco Solutions™



Indoor | Dust Control

Launderable

Black

Chocolate/Black

Navy/Black

Red/Black

Grey/Black

ECO
SOLUTIONS

Standard Sizes:

2' x 3', 2.5' x 3', 2.5' x 4'
3' x 4', 3' x 5', 3' x 10'
4' x 6', 4' x 8'

Custom Sizes: Up to 40'
in 3' and 4' widths

- P.E.T. fiber – made from 25% Post Consumer recycled plastic bottles.
- Yarn is solution dyed for superior colorfastness.
- Universal cleated backing in 100% Nitrile rubber.
- 15% lighter in weight than standard mats, reducing washing and drying costs by 15%, increasing laundering capacity by 15%, and reducing the workload for route service representatives.

MicroGuard™



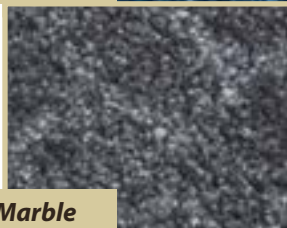
Indoor | Dust Control

Launderable

Blue Marble



Grey Marble



Maroon Marble



- Treated with Microban® antimicrobial protection technology to guard against degradation from microorganisms, minimizing the risk of mats being a source of odors in buildings.
- Antimicrobial system is permanently bonded to each carpet fiber, providing effective lifetime control of odors.
- 100% Nitrile rubber backing for increased slip and skid resistance.

Standard Sizes:

2' x 3', 2.5' x 3', 2.5' x 4'
3' x 4', 3' x 5', 3' x 10'
4' x 6', 4' x 8'

5' and 6' mats available
with 300 linear feet order.

Custom Sizes: Up to 40'

Plush™



Indoor | Dust Control

Launderable

Black

Brown/Black

Deeper Navy

Golden Brown

Midnight Grey

Red Pepper

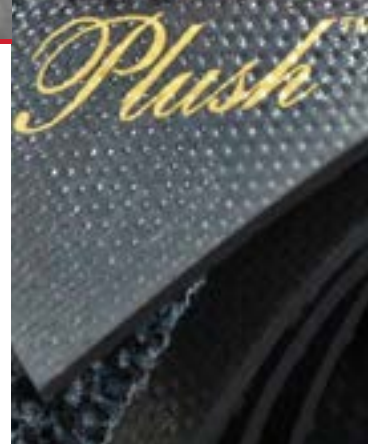
Slate Grey

Standard Sizes:

2'x 3', 2.5'x 3', 2.5'x 4'
3'x 4', 3'x 5', 3'x 10'
4'x 6', 4'x 8'
5'x 8', 5'x 10', 5'x 12'
6'x 8', 6'x 10', 6'x 12'

Custom Sizes: Up to 40'

- Solution dyed, 36 oz. per square yard, Plush carpet has 50% more weight than competitive mats.
- Heavier carpet traps 50% more moisture than competitive mats.
- 90 Mil rubber backing is over 70% heavier than competitive mats and is fully launderable.



Unique Designs™



Indoor | Dust Control

Launderable



Bowtie Pattern



Buttons Pattern



Quilt Pattern



Windows Pattern



- Four existing patterns to choose from, each with their own color selections.
- Select one of our existing designs or let us create an exclusive design just for your company.
- Features a curved corner finish. Mats are also available in square corners by request.
- 100% Nitrile rubber backing for increased slip and skid resistance.

Standard Sizes:

2' x 3', 2.5' x 3', 2.5' x 4'
3' x 4', 3' x 5', 3' x 10'
4' x 6', 4' x 8'
5' x 8', 5' x 10', 5' x 12'
6' x 8', 6' x 10', 6' x 12'

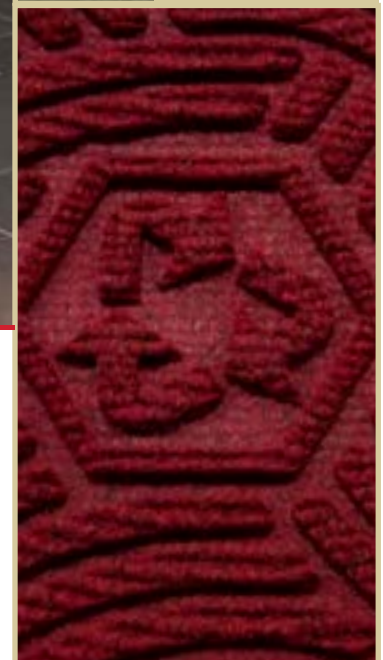
Custom Sizes: Up to 40'

Waterhog Plus™



Indoor/Outdoor | Dust Control

Launderable



Standard Sizes:

2' x 3'
3' x 4', 3' x 5', 3' x 10'
4' x 6', 4' x 8'
6' x 12'

Not Available in 5' widths

- Fully launderable, Nitrile rubber backed Waterhog mat with a 100% recycled P.E.T. surface.
- "Water Dam" border is designed to hold dirt and moisture.
- Raised nubs hold dirt and moisture below foot level and are resistant to crushing.

Anti-Fatigue Mat Collection

AirFlex™

Comfort Flow™

Comfort Scrape™

Complete Comfort™

Cushion Max™

Cushion Station™

HogHeaven™

HogHeaven Confetti™

HogHeaven Fashion™

HogHeaven Marble™

HogHeaven Plush™

Comfort Flow Tile™

Comfort Scrape Tile™

Cushion Station Tile™

HogHeaven Tile™



Indoor | Anti-Fatigue

Launderable



Black Rubber



- Chemical resistant Nitrile rubber provides excellent cushion during use, giving maximum durability and longer surface life.
- All-rubber surface means exceptional stain resistance and easy maintenance.
- Dome design provides superior relief from back and leg stress.

Standard Sizes:

2' x 3'
3' x 5'

Custom sizes are
not available

Comfort Flow™ and Comfort Scrape™



Indoor/Outdoor | Anti-Fatigue

Launderable



Comfort Flow



Comfort Scrape

Standard Sizes:

2' x 3'
3' x 5', 3' x 9'
4' x 6'

Connector clips available for Comfort Flow:

- side to side
- end to end

- 100% Nitrile rubber for superior grease and oil resistance.
- Treated with an anti-microbial agent to guard against degradation from microorganisms, reducing the possibility of mats being the source of odors.
- Anti-static properties allow for use around sensitive electronic equipment.

Complete Comfort™

Indoor | Anti-Fatigue

Launderable



With Holes

Without Holes

- Durable, closed-cell Nitrile foam rubber is resistant to grease, oil and chemicals.
- Edges are beveled for easier floor to mat transition.
- Textured surface offers superior slip and skid resistance.
- Anti-microbial treatment reduces odors by inhibiting the growth of germs and bacteria.

Standard Sizes:

2' x 3',
3' x 4', 3' x 5', 3' x 10', 3' x 12'
4' x 6', 4' x 8'

Custom Sizes: Up to 75' in
3' and 4' widths

Cushion Max™

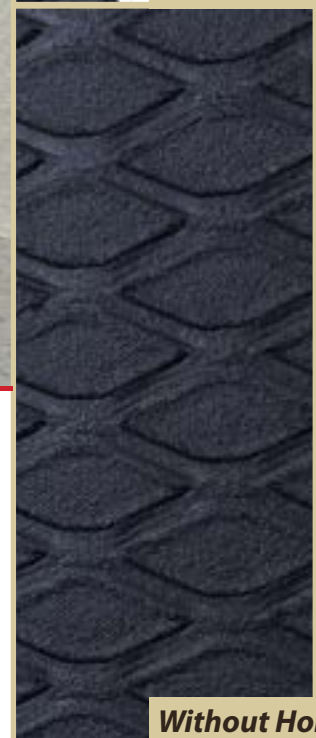


Indoor | Anti-Fatigue

Non-Launderable



With Holes



Without Holes

Standard Sizes:

2'x3'
3'x5', 3'x12'
4'x6'

Custom Sizes: Up to 45'
in 2', 3' and 4' widths

- Cost-effective alternative to traditional PVC foam mats.
- Constructed of 100% Nitrile/PVC closed-cell foam to provide superior anti-fatigue properties.
- Diamond pattern surface is more than twice as durable as traditional PVC foam mats, helping to reduce slip and fall accidents.

Cushion Station™



Indoor / Outdoor | Anti-Fatigue

Laundryable/Autoclave



With Holes



Without Holes



- Highly durable, closed-cell Nitrile rubber is uniquely designed to be a comfortable and functional anti-fatigue mat.
- Mats are grease and oil proof and can be used in wet or dry environments.
- Mats may be autoclave sterilized and are treated with an anti-microbial agent for lifetime protection against odors and degradation.
- Anti-static mats are safe to use at welding stations.

Standard Sizes:

3.2' x 2', 3.2' x 5.3'
3.2' x 8.3', 3.2' x 12.3'
3.2' x 16.1', 3.2' x 20.1'
4' x 5.9', 4' x 8.3'
4' x 12.3', 4' x 16.1'
4' x 20.1'

Custom sizes are not available

HogHeaven™

Original, Striped Border and Confetti



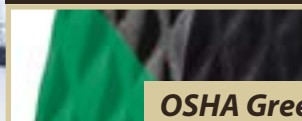
Indoor | Anti-Fatigue

Non-Launderable

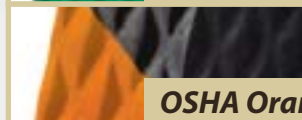


Black

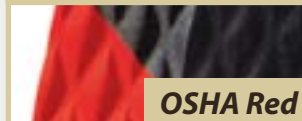
HogHeaven Striped Border



OSHA Green



OSHA Orange



OSHA Red



OSHA Yellow

HogHeaven Confetti



Blue



Gold



Green



Grey

Standard Sizes:

2' x 3'
3' x 5', 3' x 12'

Visit our website
for additional size
information

Available in 5/8" and
7/8" thicknesses

- Anti-static, Nitrile rubber surface is resistant to oils and chemicals. Mats will not crack or curl.
- Closed-cell Nitrile/PVC cushion backing provides outstanding comfort.
- Available in Solid Black and four OSHA-approved safety striped borders.
- HogHeaven Confetti's surface is made from 95% recycled post-consumer rubber tires and is welding safe.

HogHeaven™

Fashion, Plush and Marble



Indoor | Anti-Fatigue

Non-Launderable

HogHeaven Fashion

Coal Black

Cobalt Blue

Cocoa Brown

Granite

HogHeaven Marble

Amber Maple

Blue Merle

Granite Dusk

Midnight Swirl

HogHeaven Plush

Brandywine

Cinnamon

Confetti Grey

Forest Green

Navy Spice



- Closed-cell Nitrile/PVC cushion backing provides outstanding comfort.
- HogHeaven Fashion's solution dyed fabric top is molded to a solid Nitrile rubber surface.
- HogHeaven Marble is made with an extra thick rubber top to ensure long life.
- HogHeaven Plush consists of a 3/8" tufted solution dyed plush fabric that is bonded to a solid Nitrile rubber surface.

Standard Sizes:

2' x 3'
3' x 5', 3' x 12'

Visit our website for additional size information

Available in 5/8" and 7/8" thicknesses

Linkable Tile

Comfort Flow, Comfort Scrape, Cushion Station and HogHeaven



Contains
Recycled
Content

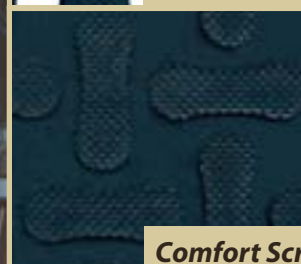
Indoor | Anti-Fatigue



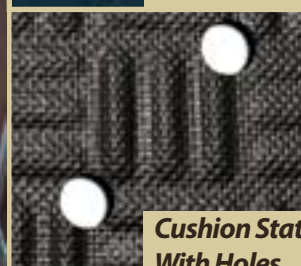
Tile Detail



Comfort Flow



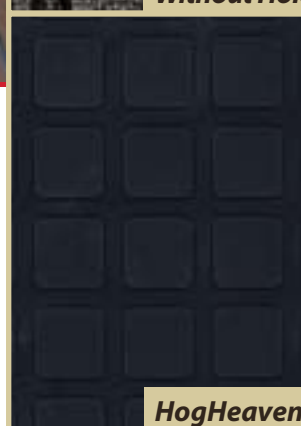
Comfort Scrape



Cushion Station
With Holes



Cushion Station
Without Holes



HogHeaven

Standard Sizes:

18" x 18"
36" x 36"

- Linkable Tiles can be combined to fit any workstation in 18" or 36" increments.
- All of the tiles are lightweight and flexible for easy handling.
- Comfort Flow and HogHeaven Tiles are available with a grit-top surface that uses aggressive silicon carbide for added anti-slip properties.

Specialty Mat Collection

Action Mats™

Oil Magnet™

Restroom Service™

SuperScape™

SuperScape Eco™

Waterhog Classic™

Waterhog Fashion™

Waterhog Eco Elite™

Waterhog Eco Premier™

Waterhog Eco Grand Elite™

Waterhog Eco Grand Premier™



Action Mats™ and Oil Magnet™

Indoor | Dust Control

Launderable



Cotton Fibers



- Both Action Mats and Oil Magnet are constructed with a cotton yarn in a black and white tweed color.
- Action Mats have 100% Nitrile rubber backing and borders for superior grease and oil resistance.
- Oil Magnet mats are constructed with a durable cotton duck backing and serged borders. These mats can soak up contaminants such as hydraulic fluids, coolants, water, condensation, oils and solvents.

Standard Sizes:

Action Mats:

2' x 3', 2.5' x 3', 2.5' x 4'
3' x 4', 3' x 5', 3' x 10'
4' x 6', 4' x 8'

Special Sizes Available in 3' and 4' widths

Oil Magnet:

19.5" x 20", 19.5" x 66"
38" x 66", 38" x 132"

Restroom Service™

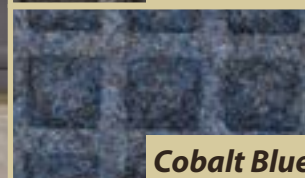


Indoor | Dust Control

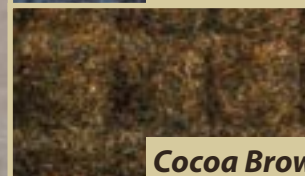
Non-Launderable



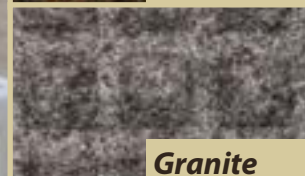
Coal Black



Cobalt Blue



Cocoa Brown



Granite



Standard Sizes:

Sink Mat: 3' x 5'

Toilet Mat: 21" x 24"

Urinal Mat: 20" x 17"

Custom sizes are
not available

- Solution dyed fabric top provides superior colorfastness and bleach resistance.
- "Water Dam" borders trap liquids, keeping floors dry and sanitary, while the raised surface keeps shoes dry.
- Polypropylene fabric dissipates moisture and the anti-microbial treatment controls odor-causing bacteria.

SuperScrape™



Indoor/Outdoor | Dust Control

Launderable

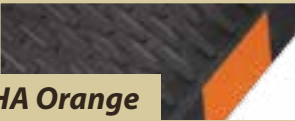


Black

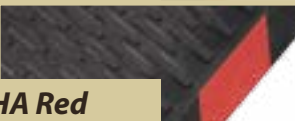
OSHA Striped Border



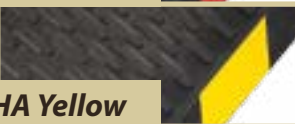
OSHA Green



OSHA Orange



OSHA Red



OSHA Yellow



- Available in durable, 100% Nitrile rubber or general purpose natural rubber.
- Molded tread surface cleats effectively scrape tough dirt and grime off of shoes, keeping soil below foot level.
- Grease Resistant mats are available in four OSHA-approved safety striped borders in Green, Orange, Red and Yellow.

Standard Sizes:

Grease Resistant:

2.5' x 3'
3' x 5', 3' x 10'
4' x 6', 4' x 8'
6' x 6', 6' x 8'

General Purpose:
3' x 5'

Custom sizes are
not available

SuperScrape Eco™



Indoor/Outdoor | Dust Control

Non-Launderable



Standard Sizes:

2'x3'
3'x5'
4'x6'

Custom sizes are
not available

- Multi-directional, anti-slip, molded surface pattern effectively scrapes tough dirt and grime off shoes.
- High recycled content: 95% post consumer recycled tires.
- Universal recycle symbol is molded directly into the mat face, promoting recycling.
- Mat is equally effective when placed vertically or horizontally and heavy weight helps keep mat in place.



Recycled Rubber

Waterhog™ Classic and Fashion



Indoor/Outdoor | Dust Control

Non-Launderable

Aquamarine

Bluestone

Bordeaux

Camel

Charcoal

Dark Brown

Evergreen

Gold

Light Green

Medium Blue

Medium Brown

Medium Grey

Navy

Orange

Purple

Red / Black

Solid Red

Yellow

Fashion Borders

- Durable polypropylene surface is suitable for indoor or outdoor use.
- "Water Dam" border is designed to hold dirt and moisture. Borders available in rubber or fashion fabric.
- Raised nubs trap dirt and moisture below foot level and are resistant to crushing.
- Highly absorbent fabric allows mats to hold up to 1.5 gallons of water per square yard.

Standard Sizes:

2' x 3'
 3' x 4', 3' x 5', 3' x 8'
 3' x 10', 3' x 12'
 3' x 16', 3' x 20'
 4' x 6', 4' x 8', 4' x 10'
 4' x 12', 4' x 16', 4' x 20'
 6' x 8', 6' x 12'
 6' x 16', 6' x 20'

Custom Sizes: up to 60'

Not Available in 5' widths

Waterhog™ Eco Elite and Premier



Fashion Borders

WaterHog Eco Elite offers a herringbone pattern with the molded recycle symbol

Indoor/Outdoor | Dust Control

Non-Launderable

Black Smoke

Chestnut Brown

Grey Ash

Indigo

Khaki

Maroon

Regal Red

Southern Pine

Standard Sizes:

2' x 3'
3' x 4', 3' x 5', 3' x 8'
3' x 10', 3' x 12'
3' x 16', 3' x 20'
4' x 6', 4' x 8', 4' x 10'
4' x 12', 4' x 16', 4' x 20'
6' x 8', 6' x 12'
6' x 16', 6' x 20'

Custom Sizes: up to 60'

Not Available in 5' widths

- Mat surface is made from 100% recycled P.E.T. drinking bottles and the rubber backing is made with up to 20% recycled tires.
- "Water Dam" border is designed to hold dirt and moisture.
- Raised nubs hold dirt and moisture below foot level and are resistant to crushing.
- Available in rubber or fashion borders.

WaterHog Eco Premier's repeating diamond pattern

Waterhog™ Eco Grand Elite and Premier

Indoor/Outdoor | Dust Control

Non-Launderable



Waterhog Grand Elite Pattern



Standard Sizes:

Half Oval:

3' x 1.8'

4' x 2.3'

6' x 3.3'

One End:

3' x 5.5', 3' x 10'

3' x 13.9', 3' x 17.7'

3' x 21.6'

4' x 5.9', 4' x 10.5'

4' x 14.4', 4' x 18.2'

4' x 22'

6' x 7', 6' x 11.6'

6' x 15.4', 6' x 19.3'

6' x 23.1'

Two End:

3' x 7', 3' x 11.7'

3' x 15.5', 3' x 19.4'

3' x 23.2'

4' x 8', 4' x 12.6'

4' x 16.5', 4' x 20.3'

6' x 10.1', 6' x 14.8'

6' x 18.6', 6' x 22.4'

Not Available in 5' widths

Visit our website for additional size information

Waterhog Grand Premier Pattern, one end.

- Mat surface is made from 100% recycled P.E.T. drinking bottles and the rubber backing is made with up to 20% recycled tires.
- Durable polypropylene face is suitable for indoor or outdoor use.
- "Water Dam" border is designed to hold dirt and moisture.
- Raised nubs hold dirt and moisture below foot level and are resistant to crushing, maintaining high performance and extending product life.

Waterhog Half Oval



Waterhog Grand Premier Pattern, two end.



Black Smoke

Chestnut Brown

Grey Ash

Indigo

Khaki

Maroon

Regal Red

Southern Pine

Accessories

Non-Skid Mat Underlays

Certain types of carpet - particularly very dense cut pile, commercial and plush carpet with soft padding - can lead to mats "walking." Non-skid mat underlay pads can be utilized on all floor surfaces to help prevent this situation, which can occur during normal use.

Teebaud Non-Skid Underlay: This inexpensive, thin, space-age product works on both hard floors and carpeted surfaces with Universal Cleat or Smooth backing. Please note that some service issues may be experienced when changing out mats.

Available Sizes: 2' x 4' sheets, 2' x 54' rolls and 3' x 54' rolls.

Magna-Grip Rug Underlay: This revolutionary product is used in conjunction with our Universal Cleat backing to achieve maximum performance. This product utilizes an adhesive that bonds with the carpet, keeping it in place when mats are changed out to minimize service issues.

Available Sizes: 28" x 50", 28" x 100', 36" x 60" and 36" x 100'.

Mat Identification

Three different types of property markings are available to place on the corners, back or borders of mats. These labels help promote your company and reduce theft by identifying your products.

Impression Labels: These are embedded into the rubber, creating a permanent property mark for the life of the mats. They are similar to tire markings and are available in black only.

Back Labels: These are black and white labels placed on the back of the mat.

Color Label Process: Color labels for either the corner or the border of the mat.

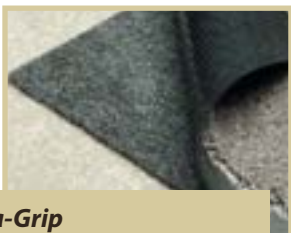
Additional Mat identification options include:

R/F Chips: At your request, DataMars or Positek R/F chips can be installed in your mats. Retro-Fitting RF chip kits are also available.

ID Labels: These labels are offered on the back of the mat at opposite corners and can include 13 characters per line in up to 3 lines. Here you can place the name of the mat, route day, route number or even bin number, making it easy to identify without having to unroll the entire mat.



Teebaud



Magna-Grip



Impression Label



Back Label



Color Label



R/F Chip Cover



ID Label

Dye Kits

Mountville's Dye Kits are the best way to extend the life of a mat. These kits contain all of the necessary materials and instructions to over-dye/ touch up most nylon mats that have faded or become obsolete. Dyes are pre-packaged in 100 lb., 200 lb. and 400 lb. kits. This easy, one-step process is very economical, safe and delivers bright, colorfast nylon mats. For large capacity wash wheels, multiple over-dye kits may be used. Mats must be manufactured with Nylon yarn to take advantage of these over-dyeing opportunities. A double strength, black dye kit is also available in 100 lb., 200 lb. and 400 lb. kits for over-dyeing logo mats.

Results may vary depending upon the quality and different shades of mats being dyed and the equipment used during the over-dyeing process. Mountville cannot accept responsibility for replacement of mats due to off-shade results.

Available in:

Black - over-dye all colors.

Brown - touch up Browntone.

Navy - touch up Navy, over-dye Solid Blue, Silver or Grey.

Slate - touch up Slate, over-dye Silver or Grey.

Red - touch up Solid Red or Red/Black.

Double Strength Black - over-dye Logo Mats.



Dye Kit

Mat Repair Kits

After a period of time, some mats can become cut, nicked or even torn. Mountville's Repair Kits are the best solution for these types of problems. These easy-to-use kits can be used in one of two ways:

Cold Patch Repair Kits: Contain rubber strips and a fast-drying adhesive that make them easy to use. Depending on the size of the repairs, these kits contain enough materials to repair 10-20 mats. The rubber is sold in rolls of 2" x 5' strips and is available with smooth or cleated backing.

Heat-Seal Repair Kits: Use in conjunction with a mat repair press or heat-seal machine. Please use uncured rubber strips to mend the mats. Uncured rubber is sold in 2" x 5' strips or by a 2" x 225' roll if larger quantities are needed.



Repair Kit

Miscellaneous

Gum remover, fabric mat bags, Loc-Tite super bonder, black tag marker, white Mark-TeX pens, R/F Chip covers in circular or rectangle shapes and specific placement labels.

Tech Tips on the Internet

Recommended laundering, over-dyeing instructions and a "Trouble Shooting Guide" are available online at www.mountville.com.

Mountville Mills, Inc. USA

1729 South Davis Road
LaGrange, GA 30241
www.mountville.com
mats@mountville.com
Toll Free: 800.241.5549
Phone: 706.882.2961

Mountville Mills Canada

6970 Pacific Circle
Mississauga ON, L5T 1N8
www.mountvillecanada.com
mats@mountvillecanada.com
Toll Free: 800.665.5336
Phone: 905.795.1595

Mountville Mills Europe

Klein Frankrijk 38
9600 Ronse, Belgium
www.mountville.eu
mats@mountville.eu
Phone: +32 (0) 55319597

Mountville Mills China

RM# 703, Building A
YiGang Plaza, #268 HuangPu East Rd.
Guangzhou, China 510000
Tel: +86-20-38038161
chinainfo@mountville.com