

## Chemical Compatability of Nitrile Rubber Products

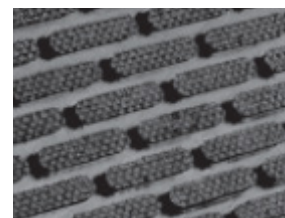
### Chemical Tested Rating

Aliphatic Hydrocarbons - Kerosene, etc.	1
Animal & Vegetable Oils	1
Aromatic Hydrocarbons - Benzol, Toluol, etc.	1
Bleach	1
Concentrated Alkali	1
Cutting Oil	1
Denatured Alcohol	1
Diesel	1
Dilute Alkali	1
Engine Oil	1
Gasoline	1
Hydraulic Fluid Silicate Ester	1
Hydraulic Fluid Water Glycol	1
L.P. Gas, Fuel Oils	1
Lubricating Oils - High Aniline	1
Lubricating Oils - Low Aniline Point	1
Mineral Spirits	1
Muriatic Acid - 30%, 20 Degrees Baume	1
Phosphoric Acid	1
Pine Cleaner	1
Refrigerants, Ammonia	1
Sodium Hydroxide, Rayon Grade, 25%	1
Sulphuric Acid - 30%	1
Transmission Fluid	1
WD40	1
Water	1
Window Cleaner	1
Anti-Freeze	2
Brake Fluid	2
Calcium Hypochlorite - 12%	2
Chlorine Bleach - 12.5%	2
Hydraulic Fluid - Petroleum Base	2
Steam	2
Butyl Alcohol	3
Isopropyl Alcohol - 99%	3
Acetic Acid - 56%	4
Acetone	4
Cyclohexane	4
Refrigerants, Methyl Chloride	4

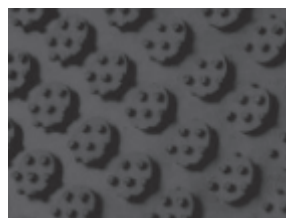
### Products Tested



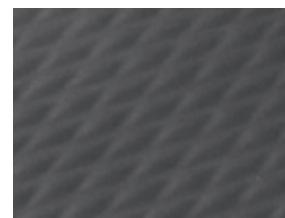
Happy Feet®



SuperScape™



Safety Scape™



Hog Heaven®



Complete Comfort™ II



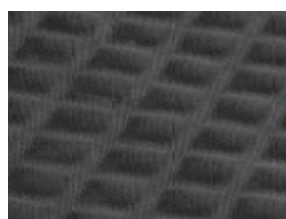
Cushion Station™



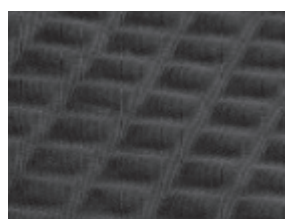
Comfort Flow™



Comfort Flow™ Mod. Tile



Traction Tread™



Traction Tread™ Soft

### Rating Key

- 1 = Little or no effect
- 2 = Minor to moderate effect
- 3 = Moderate to severe effect
- 4 = Not recommended