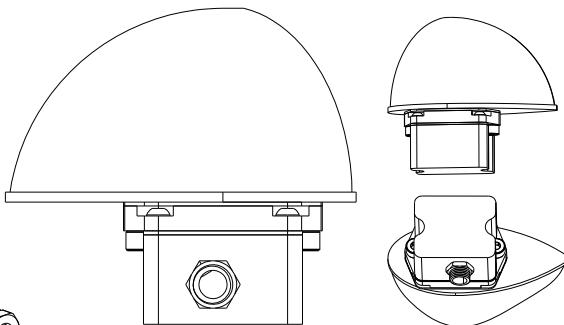
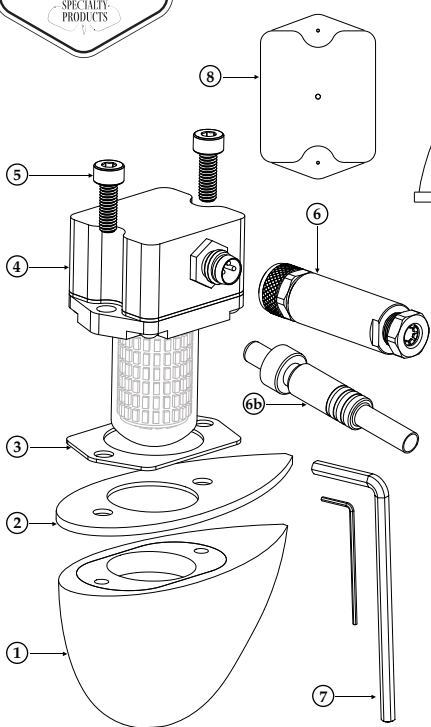




H9W AERODYNAMIC LED STROBE LIGHT

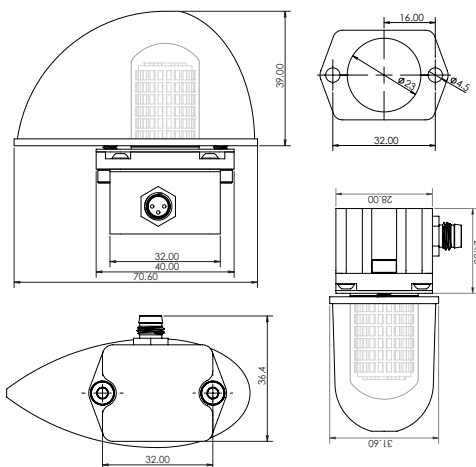


PRODUCT SPECIFICATIONS

Light Type	Flashing Strobe Light
LED Brightless	2600 Lumens
LED Light Colour	White or Red
Max. Current Draw (amps)	0.5A
Max. Voltage (Volts)	14.2V
Min. Voltage (Volts)	12V
Total Weight (grams) - Single Unit	97 g
Total Weight (grams) - Dual Unit	194 g

*For Experimental Aircraft Applications Only

PRODUCT DIMENSIONS (mm)



SINGLE PACK	DUAL PACK
1 Piece	2 Pieces
1 Piece	2 Pieces
1 Piece	2 Pieces
1 Piece	2 Pieces
2 Pieces	4 Pieces
1 Piece	-
1 Piece	1 Pieces
1 Piece	1 Pieces
1 Piece	2 Pieces

INCLUDED COMPONENTS

- ① Translucent polycarbonate lens; 6061 aluminum holder plate.
- ② TPU rubber outer gasket.
- ③ TPU rubber inner gasket.
- ④ 2600 Lumen LED module; 6061 aluminum holder case;
- ⑤ Stainless steel M4*12mm socket head cap screw.
- ⑥ M8 Nano connector.
- ⑥b DC power plug
- ⑦ 0.9mm and 3mm hex key.
- ⑧ Drilling guide template.

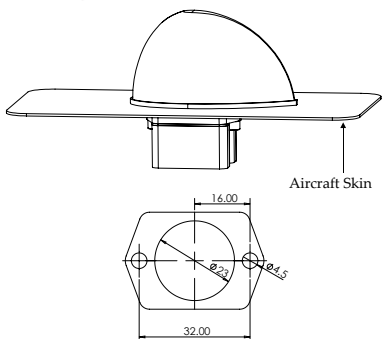
COMPONENTS REQUIRED TO COMPLETE INSTALLATION

1. On-off switch.
2. Electrical wire - recommend 20AWG or thicker.
3. Circuit breaker - recommend Klixon 7277-1 or equivalent 1 amp circuit breaker.



H9W AERODYNAMIC LED STROBE LIGHT

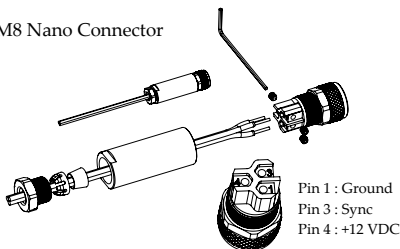
INSTALLATION INSTRUCTIONS



Aircraft Skin

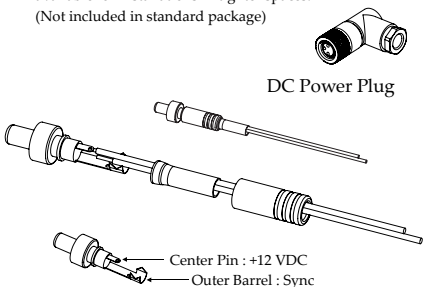
1. Choose a suitable location for installation of the strobe light. Remember that the back of the strobe light must be accessible for its installation. Room should be reserved around the unit for wiring to run without tight bends.
2. At your chosen location mark and drill the three required holes using the provided drill guide sticker. Two 4.5mm (or 11/64 in) holes, and one 23mm hole are required.
3. Place the inner gasket, then install the LED light unit through the hole. The LED unit can be rotated by 180 degrees depending on which side the connector works best for your installation. The outside gasket and the lens unit can now be placed on the outside and attached with the two provided M4*12 socket head cap screws. These screws can be replaced with longer ones if necessitated by aircraft skin thickness. It is recommended to use loctite on the mounting screws.
4. Wiring

M8 Nano Connector



The included M8 Nano Connector uses screw terminals, a 0.9 mm allen key is included.

A 90 degree version of the M8 Nano Connector is available for installations in tighter spaces. (Not included in standard package)

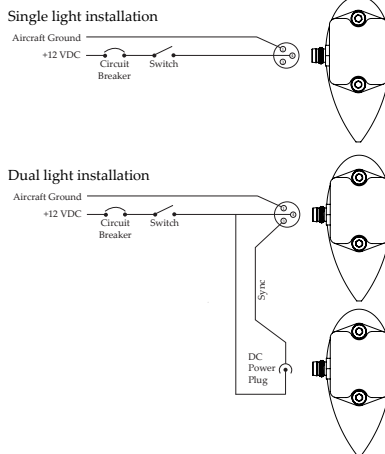


The DC Power plug on the slave light uses soldered connections.

For a single light installation, connection to switched 12V power, via a 1 amp circuit breaker, and ground are required.

For a dual light installation, the master light, with the 3 pin M8 nano connector requires 12V power, ground, and a sync connection to the slave light with the 2 pin DC power plug connector. The Sync connection allows the two lights to flash in sync. Refer to the wiring diagram for typical installation of the system.

Wiring Diagram (Typical installation)



Minimum 20 AWG wire is recommended for all connections.

Please do not hesitate to contact H9W with any questions regarding your installation.
info@h9w-aviation.com

Disclaimer

This product is Non-TSO'd and uncertified. It is NOT approved for use on certified aircraft. It is up to the user to determine the airworthiness of their specific application.