

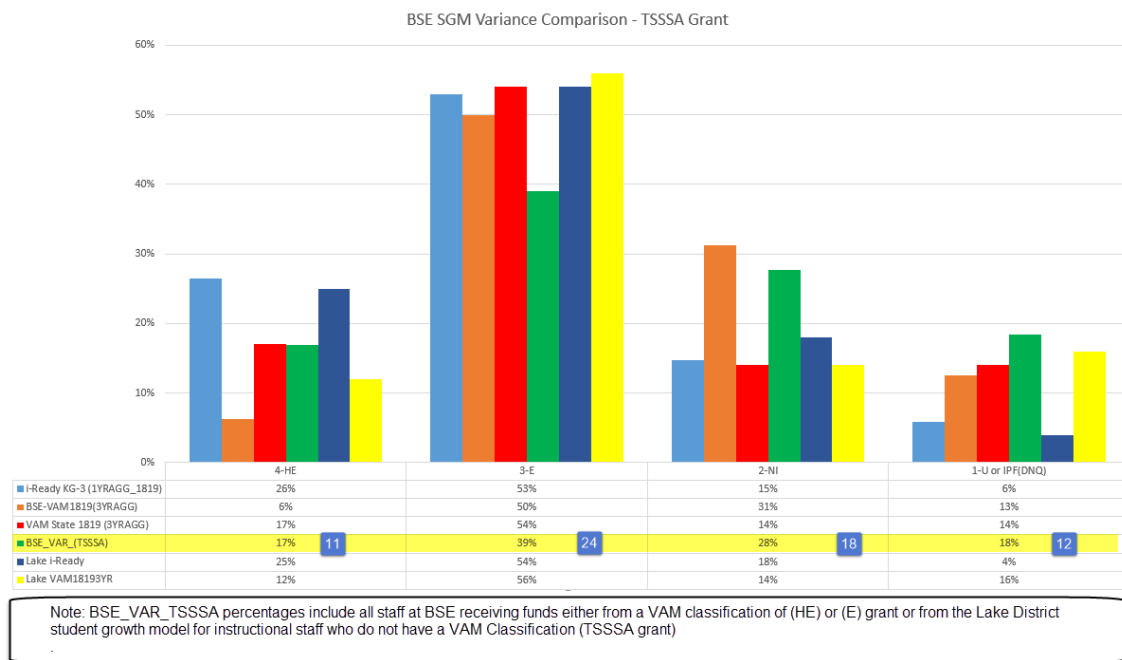
District 35 (Lake) will use the following model to calculate student growth for teachers who do not have a VAM record assigned by the FL Department of Education at Beverly Shores Elementary School.

- i-Ready student assessment data will be used for grades K-3 to calculate the 1-year student growth measure based on 2018-19 assessment data and instructional rosters.
  - Based on teacher’s rosters, an average of the teacher’s Diagnostic Gain will be used to calculate a student growth measure.
    - The Diagnostic Gain is the growth achieved between the first i-Ready Diagnostic assessment and the last i-Ready diagnostic assessment for both ELA and Math.
    - An aggregate average will be calculated (ELA/Math)
  - An average district Diagnostic Gain aggregate will be calculated for ELA and Math.
  - The teacher’s Diagnostic Gain average will be compared to the district’s average to assign a student growth measure classification level based on the Z-score table below.
  - This applies to all regular classroom teachers and ESE teachers.
    - Exception: VPK Teacher – data used was the VPK Assessment from the Office of Early Learning (Bright Beginnings). Same Z-score classifications are used when calculating an aggregate score and classification.
  - The i-Ready model does not apply to teachers with a 2018-19 VAM-3year-Aggregate classification
- Instructional Staff with a 3-year Aggregate VAM rating will not use the i-Ready classification model unless the VAM classification is below the i-Ready model classification.
- Instructional Support staff and Special Area instructional staff will be assigned a whole school student growth measure based on a 1-year aggregate which includes i-Ready ELA/Math (KG-3) and/or VAM ELA/Math based on position assignment for 2018-19
- Instructional Staff new to Lake do not qualify for grant funds since Student Growth data is unavailable.
  - Exception: Staff that has a VAM performance level from another Florida district.

### Statistical Model - Mean/Standard Deviation/Z-scores (M/SD/Zscores)

Highly Effective (HE) (4)	Z-score greater or equal to 0.395
Effective (E) (3)	Z-score greater or equal to -0.295 to 0.394
Needs Improvement (NI) (2)	Z-score greater or equal to -0.695 to -0.294
Unsatisfactory (U) (1)	Z-score equal or below to -0.694

The chart below demonstrates the variance among BSE classifications, Lake Classifications and State VAM classifications using the models described above.



For the TSSSA grant purposes (Plan Item 4) for Beverly Shores Elementary, following a similar variance to State VAM classifications, the student growth measure rating level variance will be as follows:

- No more than 17% of the instructional staff is classified (HE)
- No more than 39% of the instructional staff is classified (E)
- No more than 28% of the instructional staff is classified (NI)
- No more than 18% of the instructional staff is classified (U) or Do-Not-Qualify (DNQ)