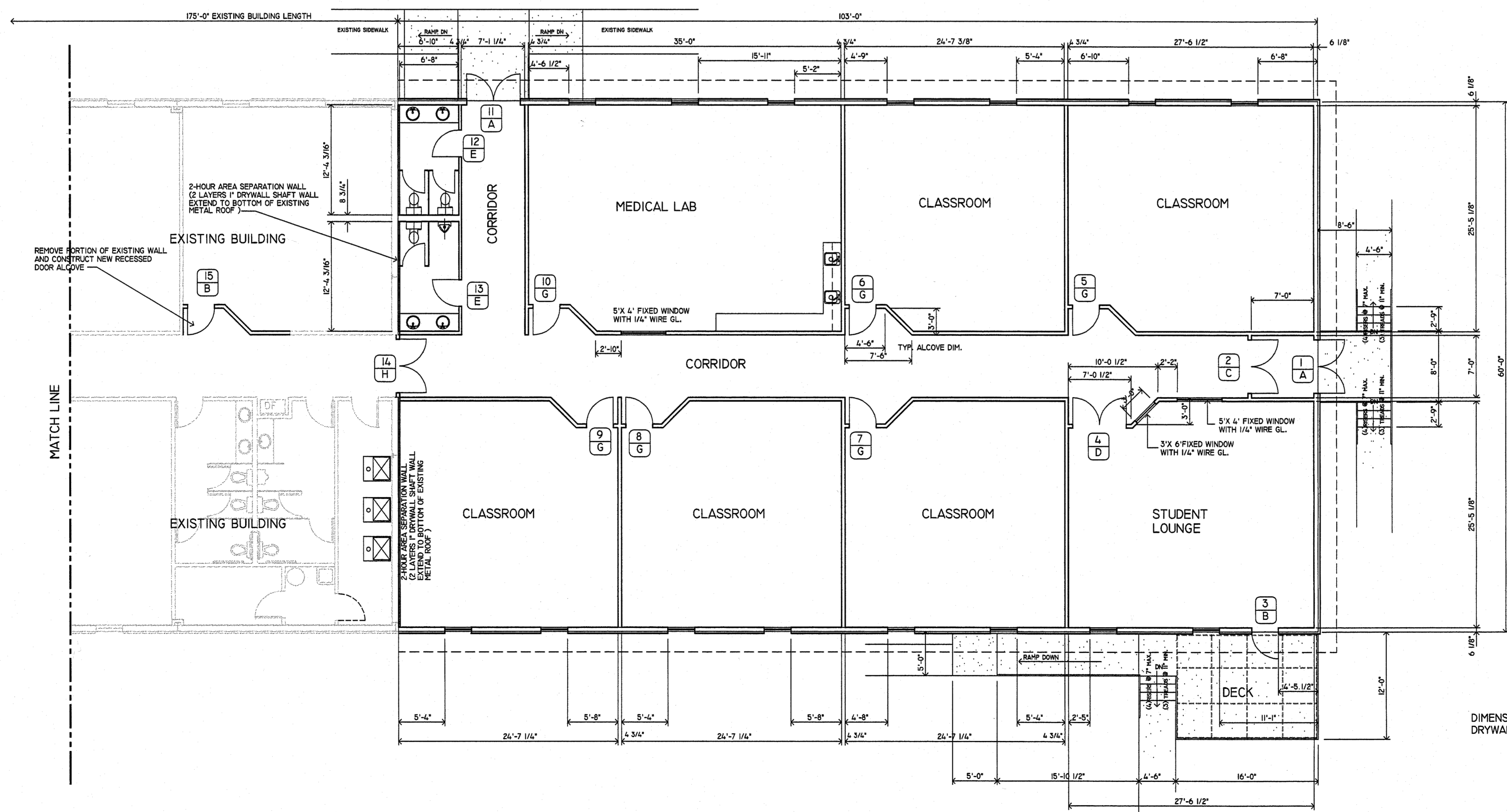


FLOOR PLAN - AREA A
SCALE: 1/8" = 1'-0"



FLOOR PLAN - AREA B
SCALE: 1/8" = 1'-0"

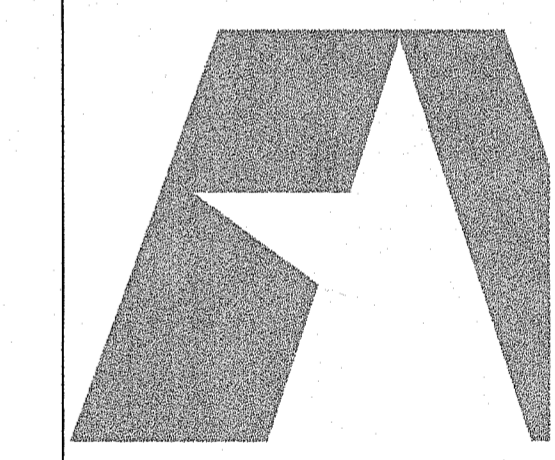
DIMENSIONS SHOWN ON THIS PLAN ARE FROM FINISH DRYWALL TO FINISH DRYWALL UNLESS NOTED OTHERWISE

Project Name

New Addition
For

Indiana Business College

Riggin Road
Muncie, Indiana



**Architects
America**

www.architects-america.com
Keith A. Pugh, AIA, Architect
John D. Hicks, AIA, NCARB

Office One: 2680 W. Kilgore Avenue
Suite 1
Muncie, Indiana 47304
Phone: 765.284.5349
Office Two: 8736 West 200 South
Farmland, IN 47340
Phone: 765.468.6912

Members of the American Institute of Architects

Drawing Date: June 25 2003
Drawn By: John D. Hicks
Checked By: Keith A. Pugh
Revision Dates:



Sheet Number

A1

Floor Plan

Architects Project No. 0000000