

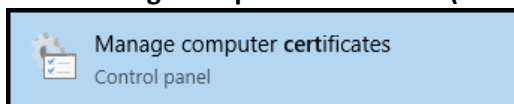
HOW TO

Add Sennheiser Certificates to Untrusted Certificates in AD - GPO

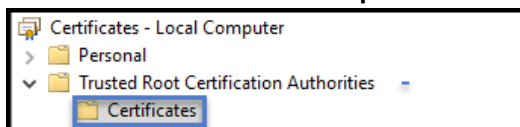
What you need to do (summary):

Export the faulty certificates from a client pc to the desktop, copy them to a network share and import them to AD – GPO: Computer Configuration → Policies → Windows Settings → Security Settings → Public Key Policies → Untrusted Certificates

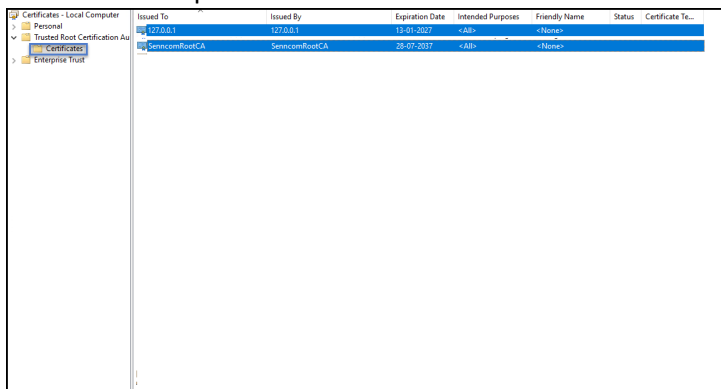
1. Go to **manage computer certificates** (on a client pc with the faulty certificates).



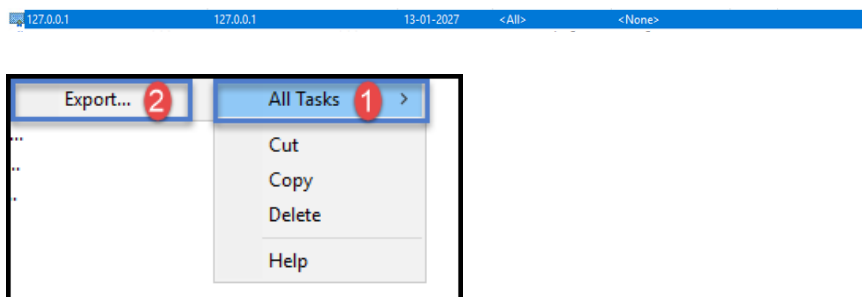
2. Go to **Certificates - Local computer > Trusted root certification Authorities > Certificates**



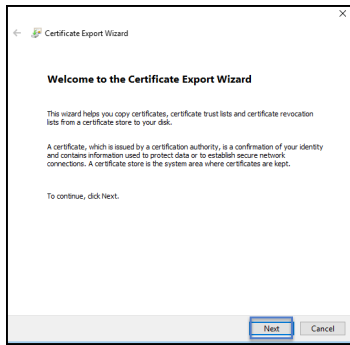
3. You need to export the two certificates: **127.0.0.1** and **SenncomRootCA** to the desktop



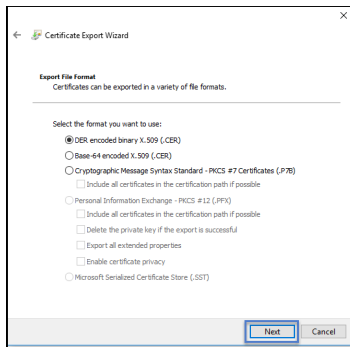
4. **Right click** at the first file: **127.0.0.1** and choose **All Tasks (1) > Export (2)**



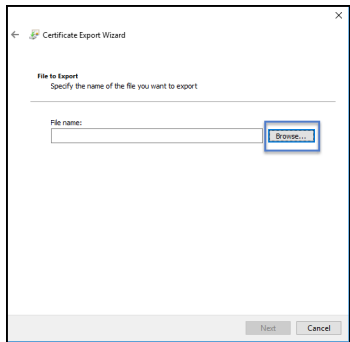
5. Click **Next**



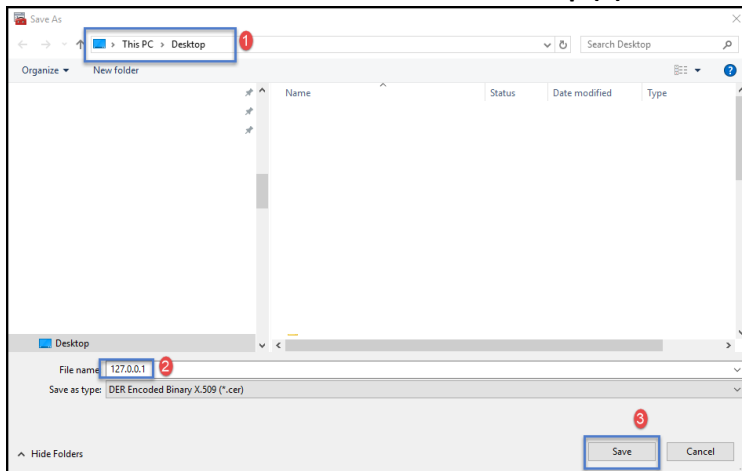
6. Click **Next**



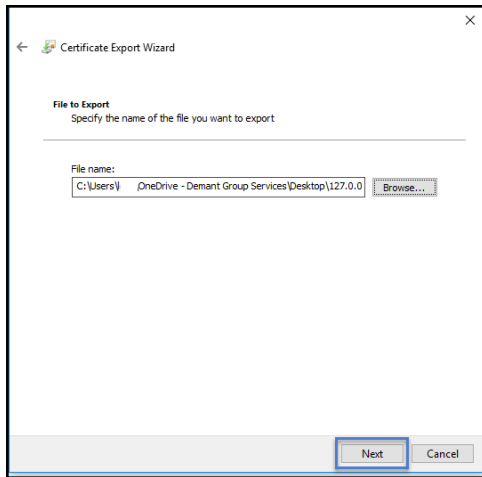
7. Click **Browse** and choose to save the file on the **desktop**



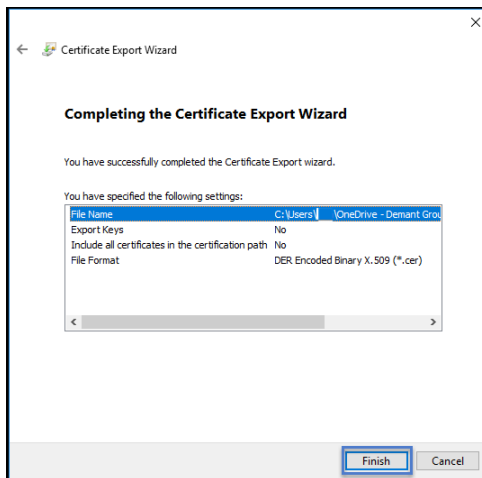
8. Choose to save the file **127.0.0.1** on the **desktop (1)** name the file **127.0.0.1 (2)** and click **save (3)**



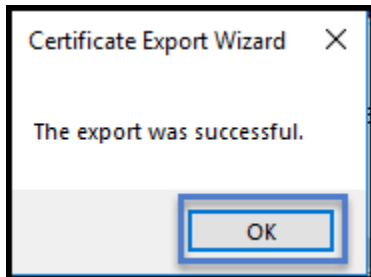
9. Click **Next**



10. Click **Finish**

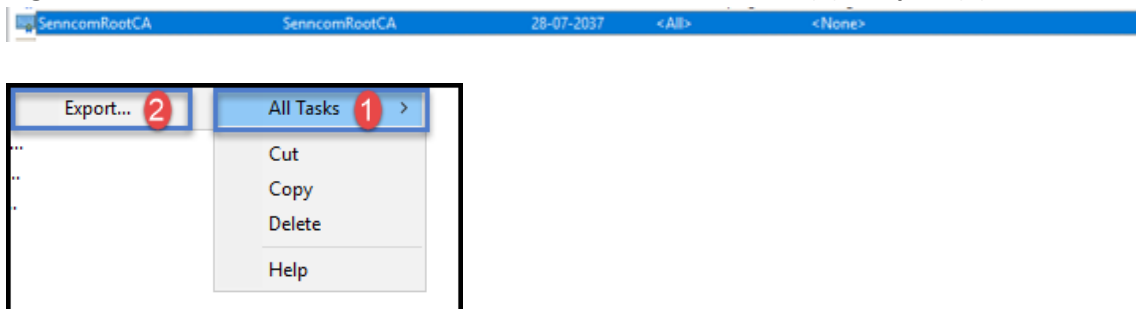


11. Click **OK**

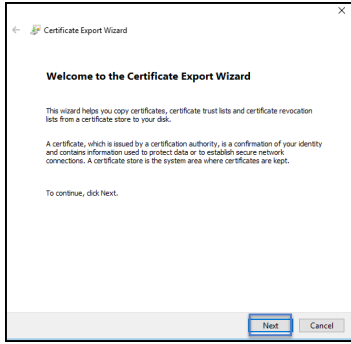


12. Now you need to export the next certificate **SenncomRootCA** to the desktop.

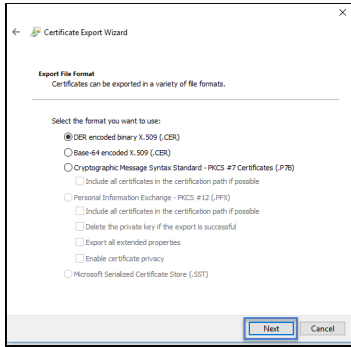
Right click at the **SenncomRootCA** certificate and choose **All Tasks (1) > Export (2)**



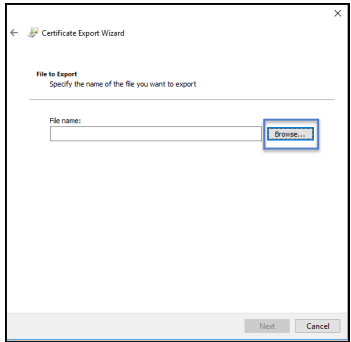
13. Click **Next**



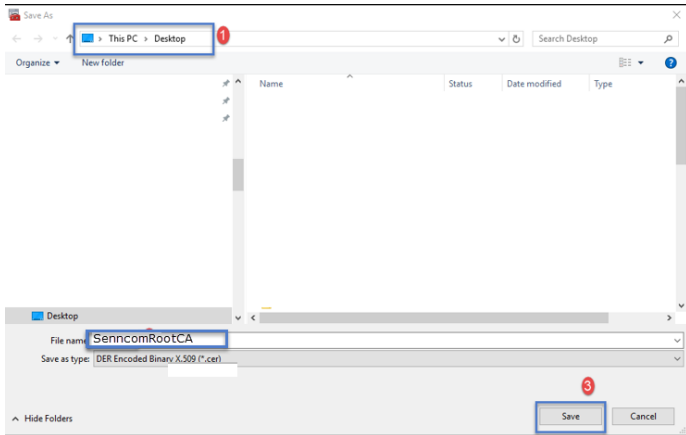
14. Click **Next**



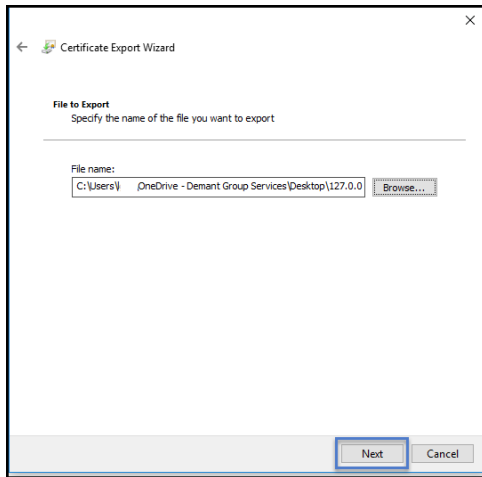
15. Click **Browse** and choose to save the file on the desktop



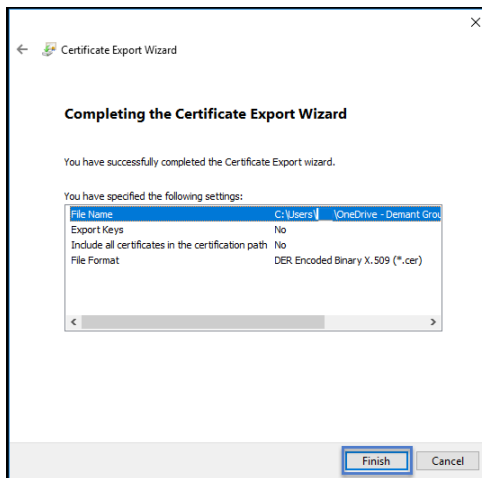
16. Choose to save the file **SenncomRootCA** on the **desktop (1)** name the file **SenncomRootCA (2)** and click **save (3)**



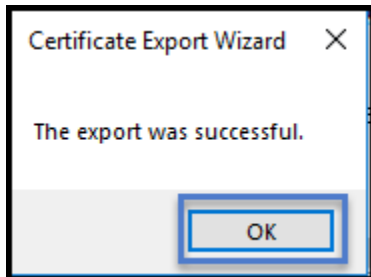
17. Click **Next**



18. Click **Finish**



19. Click **OK**



20. Copy the two files (127.0.01 and SenncomRootCA) from the desktop to a network share, where you are able to reach them from the AD server.

21. Now you need to Import the two certificates from the networks share (127.0.01 and SenncomRootCA) to the AD – GPO: **Computer Configuration -> Policies -> Windows Settings -> Security Settings -> Public Key Policies -> Untrusted Certificates.**

After Group Policy renewal, these certificates will be listed in the local machine untrusted certificates store of each system. This listing in the untrusted store has precedence, even if the certificates remain in the trusted root certificate store.