



www.scott-sports.com

All rights reserved © 2014 SCOTT Sports SA
SCOTT Sports SA | 17 Route du Crochet | 1762 Givisiez | Switzerland

Distribution: SSG (Europe) Distribution Center SA
P.E.D Zone C1, Rue Du Kiell 60 | 6790 Aubange | Belgium

V4.3/19012015

SCOTT KIDS

BIKE OWNER'S MANUAL 2015





www.scott-sports.com

Congratulations on the purchase of your new SCOTT bicycle!

We are confident that the bicycle will exceed your expectations for value, performance, and ride quality. Each frame set and component has been custom specified and designed to enhance the riding experience and provide endless hours of two-wheeled fun.

We strongly recommend you take the time to read this manual and familiarize yourself with your new bicycle.

Please also take time to ensure your child understands the safety information contained in this manual.

CONTENTS

General Introduction	04
Safety	05
Assembly of Training Wheels	06
Chain Tension	07
Brakes	07
Light Systems	08
Bicycle Helmet and Clothing	09
Replacement of Defective Or Bent Parts	09
Maintenance and Care	10
Checklist	11
Tightening Torques for SCOTT Bikes	12
Bicycle Care	13
Spare Parts for Your SCOTT Bike	13
Warranty	14
SCOTT Service Plan	16

GENERAL INTRODUCTION

IMPORTANT!

Before a child rides his/her new bike, it is essential that a responsible adult/parent thoroughly reads the owner's manual and ensures the child understands all the safety information.

Please make sure your SCOTT bike is completely assembled by your authorized SCOTT dealer.

This is very important as it guarantees that your bike is set up correctly and optimizes performance and safety.

It is important to understand the basics of riding a bicycle in addition to exercising common sense when cycling. Cycling is a dynamic sport and requires reacting to varying situations. Like any sports, cycling involves risk of injury and damage.

By choosing to ride a bicycle, you assume the responsibility for that risk.

IMPORTANT!

Please use the bike of your choice only for the purpose it was made for.

If you have questions or problems regarding your new SCOTT bicycle, please contact your Authorised Dealer.

Ride Frequently!

SAFETY

LEGAL ADVICE

Your new kids bike meets (as a complete equipped model) all demands of the traffic law standards and is allowed to be used in public streets.

It is obligatory that your child has reached the age of 8 years, otherwise he/she should use the sidewalk which is legal up to 10 years of age. Please check your national laws regarding this point!

USE OF THE BIKES

Maximum load of the bike must not exceed 50 kg.

The carrier (when supplied with the bike) is made for a maximum load of 20 kg. In general we recommend not to use the carrier on kids bikes for load transports due to the reduced riding performance. SCOTT kids bikes are built to be very robust, jumps or riding on stairways however exceed normal use.

AVOIDING HAZARDS

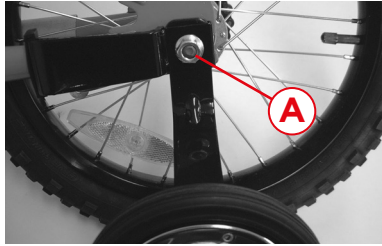
When producing your SCOTT kids bike we only select high quality parts that offer safety under all riding situations. This is very important when participating in public traffic. Maximize safety by avoiding dangerous situations:

- Ensure your child is well experienced in cycling when riding in public traffic. Please be reminded that your child needs some time to get used to his/her new bike. In addition, children are allowed to ride on the sidewalk up to an age of 10 years.
- To react in the right way on public streets it is important for your child to know about the traffic laws.
- Do not stress your child. It might happen that other participants in traffic, especially cars, will make feel him/her unsure. Please familiarize your child on how to ride in a parking ground before participating in traffic.

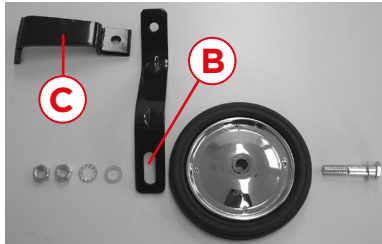
ASSEMBLY OF TRAINING WHEELS

Assembly of training wheels (only 12" and 16" models) and adjustment of chain tension on bikes without rear derailleurs. For the assembly of the optional training wheels for 12" and 16" bikes please follow these instructions:

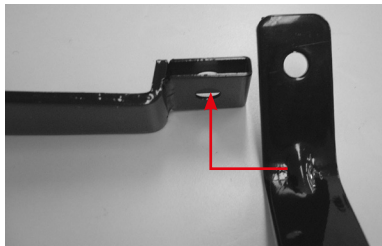
1. On one side of the rear wheel release nut A and remove it including the washer.



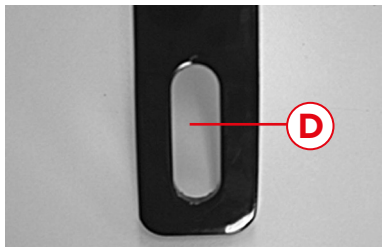
2. Put part B in part C and fix it with nut A with the washer between nut A and part C



3. Assemble the bolt and nuts/washers to fix the wheel on part B as shown



4. The long sleeved hole D will help you to balance the bike while you assemble the bike parts on the the other side using the instructions mentioned above.



5. Both training wheels should have a distance of 1-1.5cm to the ground when the bike is balanced on its wheels. After balancing the bike please tighten the wheel fixing nuts and the counter nuts.

CHAIN TENSION

If the chain needs to be tensioned again, release nut A on both sides and pull the rear wheel straight backward until the tension is ok.

Retighten nut A on both sides. Please note the tightening torque in the Tightening Torques table at the end of this manual.

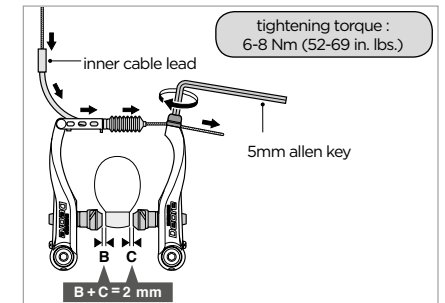
BRAKES

Your new bike is equipped with two brakes which work independently of each other.

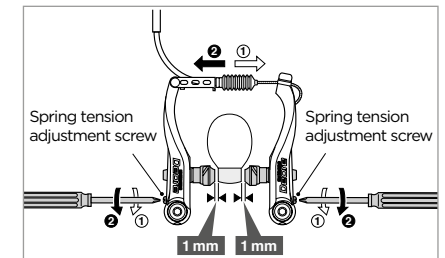
If you can pull the brakelever more than half of its way to the handlebar, you should readjust the brake. To do so, please follow these steps:

V-BRAKE

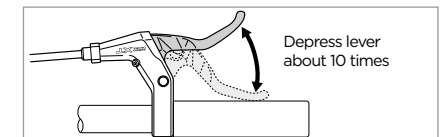
1. While holding the shoe against the rim, tighten the shoe fixing nut.
2. Pass the inner cable through the inner cable lead, and after setting so that the total of the clearances between the left and right shoes and the rim is 2 mm tighten the cable fixing bolt.



3. Adjust the distance with the spring tension adjustment screws.



4. Depress lever about 10 times



CALIPER BRAKE

Release counter nut A and turn adjustment screw B counter clockwise until the distance between brake pads and rims is approx. 2mm on each side. Tighten counter nut A.

- In case adjustment screw B is released already to the limit, please release cable clamping screw C and turn adjustment screw clockwise to its original position.
- Close the caliper brake with your hand to the rim, adjust the brake cable and tighten clamping screw C. Please note the table of tightening torques at the end of this file.
- Finally make the fine tuning with adjustment screw B as mentioned above. The wheel needs to spin free without touching the brake pads. Fix counter nut A.



IMPORTANT!

Make sure that the brake works perfectly.

IMPORTANT!

Under wet conditions the brake performance can decrease which will result in a prolongation of the braking distance.

LIGHT SYSTEMS

- light the front and rear lights by the beginning of the dusk. To switch on the dynamo press with the thumb on the button. But never while riding! To check the function of front and rear light turn the raised front wheel.
- Under wet conditions the effectiveness of the dynamo may decrease.

BICYCLE HELMET AND CLOTHING

- Please take care that your child wears clothing with bright colors and, if possible, with reflective stripes or fabrics.
- A helmet that fits is the best way to avoid head injuries. The helmet should meet DIN EN 1078 and should have the CE label. By choosing bright colors it will help to improve the visibility. Wearing such a helmet should be matter of course for all cyclists. In addition consider to be a good example for children.

REPLACEMENT OF DEFECTIVE OR BENT PARTS

In case the bike is damaged by a crash or accident, please replace all damaged parts immediately at your local SCOTT dealer. Never try to repair bent parts, they might fail and cause an accident!

BEFORE RIDING

In the beginning the seat height should be adjusted in that way that your child, when sitting on the saddle, can reach the ground with both feet. When more experienced the saddle can be raised up into perfect riding position.

IMPORTANT!

Never exceed the seatpost and stem over the marked area. Otherwise the connection can get loosen and can cause in worst case a crash.

Please check that your child can reach easily the handlebar and use brake- and shifting levers as well as the bell.

BEFORE EVERY RIDE

The traffic laws demand that one checks all functions that concern safety. Check every brake when starting to ride. Also check the function of front and rear light and check the air pressure of the tyres.

MAINTENANCE AND CARE

In addition to the checks listed above please check your bike regularly or if necessary, according to the following list or contact your local SCOTT dealer to do so in order to reach maximum safety and fun while riding.

- All bolts and nuts, especially the quick releases of the wheels for proper fit and in case they are loose tighten them .
- Stem and handlebar for visible damages and replace them if necessary. Please make sure that the bolts are tightened evenly when closing the front cap, according to the tightening torque recommended by the producer of the parts.
- Braking systems
- Air pressure of the tyres according to the recommendation of the producer.
- Light systems and bell
- Handlebar grips to be fixed to the handlebar
- All parts of the rear suspension system including mounting bolts
- The front suspension fork for perfect function and play in the bushings.
- Front and rear derailleur for perfect function and grease them. If necessary readjust the system and clean it.
- The play of the headset. If necessary readjust it.
- Brake and shifting cables for perfect wear and leakage on hydraulic systems. If necessary grease the cables.

The table of maintenance below may help you to check your bike regularly and keep the full performance of your bike.

CHECKLIST

PART	DESCRIPTION	OK
Saddle/seatpost	- Saddle tightened on seatpost - Seatpost tightened in frame - Check for minimum insertion line (min.55mm!)	
Bar/stem	- Check for minimum insertion (min. 65mm!) - Stem tightened on fork steerer - Bar tightened on stem - Easy to reach	
Brake	- Brake levers easy to reach - Function ok - Check wear of brake pads - Check position of the brake pads on the rim - Brake surface on rim without oil or grease	
Coaster brake	- Function ok	
Shifting parts	- Function ok, adjusted acc. to owner's manual	
Chain	- Chain tension ok - Chain lubricated - Chaincase in good condition (if existing)	
Tires	- Profile ok - Check air pressure acc. to recommendation shown on sidewall	
Wheels	- Spoke tension ok and equalized - Axle nuts/quick release tightened	
Training wheels	- Check fixation screws	
Pedals	- Antislip surface - Tight fixed on cranks - Bearings without lose play	
Bell	- Easy to reach	
Front light	- Tight fixed and adjusted - Bulb ok - Reflector clean and without cracks	
Dynamo	- Easy rolling on tire - Electrical connections ok - Light system checked	
Tail light	- Tight fixed and adjusted - Bulb ok - Reflector clean and without cracks	
Reflectors	- Tight fixed and adjusted - Clean and without cracks	
Visual check	- All parts without visible defects, all screws tightened according to table of tightening torques	
Screws	- All screws tightened acc. to table of tightening torques	

If you are not 100% sure that you can do the check properly please contact your dealer to avoid damages, crashes or injuries.

TIGHTENING TORQUES FOR SCOTT BIKES

PART	MOUNTING BOLT	MAX. TORQUE
Rear Derailleur	- Mounting bolt - Cable fixing bolt - Pulley screws	7.8-9.8 Nm 3.9-5.9 Nm 2.9-3.9 Nm
Front Derailleur	- Clamp - Cable fixing bolt	4.9-6.8 Nm 4.9-6.8 Nm
Rapidfire lever	- Clamp mounting bolt	4.9-6.8 Nm
STI	- Clamp mounting bolt	4.9-6.8 Nm
Brake lever	- Clamp mounting bolt	4.9-6.8 Nm
Freewheel hub	- Freewheel body - Cassette fixing nut	35-49 Nm 30-49 Nm
Crankset	- Square type - Spline type - Chainring screws	35-45 Nm 35-50 Nm 7.8-10.7 Nm
BB-Cartridge		50-70 Nm
Pedals		40 Nm
Stem	Mounting bolts - M5 - M6	5.6-7.8 Nm 9.8-13.7 Nm
Seatpost-seatclamp	- M4 - M5 - M6	2.8-3.9 Nm 5.6-7.8 Nm 9.8-13.7 Nm
V-Brake	- Frame mounting bolts - Cable fixing bolt - Brake pad bolts	5-6.8 Nm 5.8-7.8 Nm 5-6.8 Nm
Caliper Disc brake	- Magura - Shimano - Formula - Hayes	6 Nm 6-8 Nm 9 Nm 12 Nm
Disc mounting bolts	- Magura - Shimano - Formula - Hayes	4 Nm 2-4 Nm 6.2 Nm 5 Nm

BICYCLE CARE

In order to keep the function and optic of the bike in good condition we recommend periodical bicycle care.

Doing so keeps the value of the bike and helps to prevent from corrosion or other damages:

- clean with soft brush, water and soft towel. Do not use high pressure cleaner, otherwise bearings, color or decals can be damaged.
- Do not use aggressive cleaning additives
- Repair color damages at once
- Grease or oil all metal parts especially during winter use

Please use biodegradable bicycle cleaners and degreasers which are offered at your local dealer.

SPARE PARTS FOR YOUR SCOTT BIKE

For buying spare parts we strongly recommend to visit your local SCOTT dealer as he knows best which parts will fit to your bike and can help you to make your choice of parts matching to your bike.

By doing so, you can avoid a combination of parts that might not match to each other. Please only use original spare parts as only these can guarantee optimum function and safety while riding.

This is extremely important on parts of the brake system, the tire and air tube. Never use adapter solutions to fix or assemble brakes, seat/seatpost and stem/handle bar!

WARRANTY

What is Covered?

This warranty covers defects in materials and workmanship at the time of transfer of risks in frames, swingarms and forks (provided it is a fork of SCOTT) on SCOTT branded bikes sold completely assembled by SCOTT or an authorized SCOTT dealer ("Product").

How Long Does Coverage Last?

This voluntary manufacturer's warranty is limited to five years for frames and swingarms, respectively two years for forks, from the date of purchase of the Product and is limited to the first purchaser of the Product. Transfer of the Product from the first purchaser to another person terminates this limited warranty.

The limited warranty of five years for the frames and swingarms shall only be granted in case once a year a maintenance service has been effected according to maintenance requirements as set forth in the manual. The effected annual maintenance service shall be confirmed by stamp and signature. In case such an annual maintenance service has not been effected the warranty of five years for the frame shall be reduced to three years. Costs for maintenance and service have to be borne by the owner of the Product. On Gambler, Voltage Fr and Volt-X the warranty period is limited to two years.

Repaired or replaced Products are covered for the remainder of the original warranty period and subject to the conditions outlined in the original warranty, to the extent permitted by law.

Hereby SCOTT grants a worldwide voluntarily manufacturer's warranty. To the extent permitted by law and unless a shorter duration is stipulated by law, any warranties implied by law are limited in duration to maximum five, respectively two years, from the date of purchase of the Product and are limited to the first purchaser of the Product.

What Will SCOTT Do?

SCOTT will replace by similar kind and quality or repair any defective Product, or will refund your purchase price (as evidenced by your tendered receipt of purchase of the Product), at SCOTT's option. You must pay charges in connection with replacement of any non-defective parts. In such a case, you will be alerted to the advisability of replacing non-defective parts, so you can pre-authorize the costs.

What Does This Limited Warranty Not Cover?

This limited warranty does not cover defects which did not exist before the transfer of risks. This limited warranty does not cover Products used in rental operations. This limited warranty does not cover purchases of not completely assembled bikes. This limited warranty does not cover any defect caused by "wear and tear" (a complete list of all parts of "wear and tear" can be found in the manual), accident, neglect, improper handling, abuse, misuse, an act of God, improper assembly, non-compliance with recommended maintenance and care procedures, improper or incorrectly performed maintenance or repairs performed by someone other than an authorized SCOTT dealer, use of parts or devices not consistent with the Product, and alteration of the Product. All Products come with a manual; please carefully follow the instructions located there or affixed elsewhere to the Product. To the extent permitted by law, consequential and incidental damages are not recoverable under this limited warranty.

WARRANTY

How Do You Make a Claim Under This Limited Warranty?

To make a claim under this limited warranty, you must notify SCOTT of the claimed defect within the warranty period and timely return the Product to SCOTT at your expense for inspection. Please contact your authorized SCOTT dealer, call SCOTT's customer service or the national SCOTT distributor (dealer locator: www.scott-sports.com). All returned Products must be accompanied by proof of purchase (receipt) from an authorized SCOTT dealer or this limited warranty will not apply. In case of replacement or refund, returned Product becomes the property of SCOTT.

A protocol for the handing over of the Product (which you will find at the end of the manual) will remain in copy at the SCOTT dealer after acceptance and signature of the consumer. It is obligatory to show this protocol of handing over together with the defective part in case of a warranty claim given that it provides evidence of purchase or this limited warranty will not apply.

How Do State Laws Affect Your Rights Under This Limited Warranty?

This limited warranty gives you specific legal rights, and you may also have other rights, which vary from state to state.

Recommendation

We strongly recommend that you use only authorized SCOTT dealers for yearly maintenance services and for repairs, as improper or incorrectly performed maintenance or repairs voids this limited warranty. Costs for maintenance service have to be borne by the consumer.

 SCOTT Bike Warranty Periods					
	Year 1	Year 2	Year 3	Year 4	Year 5
SCOTT Bikes					
Gambler, Voltage FR, Volt-X					
Regular Warranty Period					
Option for prolongation according to maintenance intervals shown in manuals attached to bikes					

SCOTT SERVICE PLAN

Model

Year

Size

Frame

Date of purchase

Annual service to be done

- Check of shock mounts incl. lubricating the bushings
- Check of swingarm pivot incl. axle and mounts
- Check of rear shock according to the enclosed shock manual
- Check of hubs, bottom bracket and headset
- Check of all screws of the bike
- Check of handle bar, stem, saddle rails and seat post
- Check if brakepads and rims are worn out
- Check of disc brake according to enclosed service manual
- Check of suspension fork according to enclosed service manual
- Check of shifters and derailleurs incl. cables.

Date of Service:

Dealer's Signature:

SCOTT SERVICE PLAN

Model

Year

Size

Frame

Date of purchase

Annual service to be done

- Check of shock mounts incl. lubricating the bushings
- Check of swingarm pivot incl. axle and mounts
- Check of rear shock according to the enclosed shock manual
- Check of hubs, bottom bracket and headset
- Check of all screws of the bike
- Check of handle bar, stem, saddle rails and seat post
- Check if brakepads and rims are worn out
- Check of disc brake according to enclosed service manual
- Check of suspension fork according to enclosed service manual
- Check of shifters and derailleurs incl. cables.

Date of Service:

Dealer's Signature: