

Chiura Obata: American Modern
November 27, 2019 – May 25, 2020
Checklist

Chiura Obata
Grade-school coloring book
1890s
color ink on paper
5 1/2 x 7 inches (closed)
Private Collection



Rokuichi Obata
Son Chiura Obata Reading
ca. 1890s
pencil on paper
14 1/2 x 11 inches
Private Collection



Chiura Obata
Grade-school practice book
1890s
color ink on paper
9 1/2 x 7 inches (closed)
Private Collection



Chiura Obata
Teenage practice book
1890s
color ink on paper
10 x 12 inches (closed)
Private Collection



Chiura Obata
Maiden of Northern Japan
1931
mineral pigments on silk
46 1/2 x 19 3/8 inches
Crocker Art Museum, Sacramento, CA, Gift of the Obata Family, 2008.24



Chiura Obata
Untitled (Boy by the Window)
Sept. 25, 1909
watercolor on paper
5 1/2 x 3 1/2 inches
Private Collection



Chiura Obata
Untitled
Sept. 13, 1909
watercolor on paper
3 1/2 x 5 1/2 inches
Private Collection



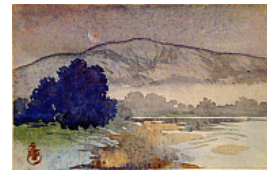
Chiura Obata
Untitled (Hills)
1909
watercolor on paper
3 1/2 x 5 1/2 inches
Private Collection



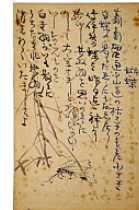
Chiura Obata
Untitled
ca. 1909
watercolor on paper
3 1/2 x 5 1/2 inches
Private Collection



Chiura Obata
Untitled (Blue Tree with Mountain Ridge and Moon)
1909
watercolor on paper
3 1/2 x 5 1/2 inches
Private Collection



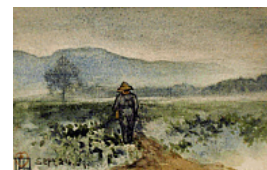
Chiura Obata
Untitled (Butterfly)
1909
watercolor on paper
5 1/2 x 3 1/2 inches
Private Collection



Chiura Obata
Untitled (Well)
Oct. 5, 1909
watercolor on paper
3 1/2 x 5 1/2 inches
Private Collection



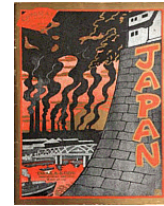
Chiura Obata
Untitled (Farmer)
1909
watercolor on paper
3 1/2 x 5 1/2 inches
Private Collection



Chiura Obata
The Dawn of the New Year, JAPAN magazine (Jan. 1925)
1925
printed magazine
12 1/4 x 9 1/4 inches
Private Collection



Chiura Obata
Osaka, the Industrious, JAPAN magazine (Nov. 1925)
1925
printed magazine
12 1/4 x 9 1/4 inches
Private Collection



Chiura Obata
The Enthronement Drum, JAPAN magazine (May 1928)
1928
printed magazine
12 1/4 x 9 1/4 inches
Private Collection



Chiura Obata
Plum Blossoms, JAPAN magazine (February 1931)
1931
printed magazine
12 1/4 x 9 1/4 inches
Private Collection



Chiura Obata
April 25th Evening, from Van Ness Avenue at Post Street, the View of San Francisco City Hall
1906
watercolor and graphite on paper
5 x 7 1/2 inches
Private Collection



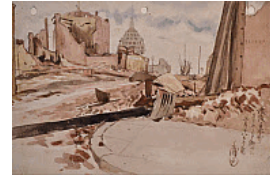
Chiura Obata
Van Ness Street
Apr. 29, 1906
watercolor and graphite on paper
5 x 7 1/2 inches
Private Collection



Chiura Obata
May 10 Stockton, Looking Up
1906
watercolor and graphite on paper
5 x 7 1/2 inches
Private Collection



Chiura Obata
Japantown after Earthquake, Near California Street, Morning
May 18, 1906
watercolor and graphite on paper
5 x 7 1/2 inches
Private Collection



Chiura Obata
Untitled (Ikebana in a Glass Vase)
Mar. 16, 1937
color ink on paper
21 x 15 1/2 inches
Private Collection



Chiura Obata
Untitled (Magnolia in a Blue Round Vase)
ca. 1930s
color ink on paper
21 x 15 inches
Private Collection



Chiura Obata
Untitled (Pomegranate)
Nov. 12, 1927
color ink on paper
10 1/2 x 15 1/4 inches
Private Collection



Chiura Obata
Untitled (Narcissuses in a Boat)
Feb. 12, 1938
color ink on paper
20 1/2 x 15 1/2 inches
Private Collection



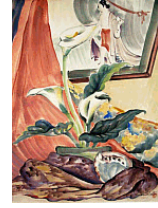
Chiura Obata
Untitled (Variety of Flowers and Floor Tiles)
ca. 1930s
color ink on paper
15 3/4 x 20 3/4 inches
Private Collection



Chiura Obata
Untitled (Peonies)
May 2, 1934
color ink on paper
15 x 11 inches
Private Collection



Chiura Obata
Japanese Woodblock Print and Calla Lilies
1930s
color ink on paper
21 x 15 1/2 inches
Private Collection



Chiura Obata
Untitled (Magnolia in a Blue Square Vase)
ca. 1930s
color ink on paper
15 3/4 x 20 3/4 inches
Private Collection



Chiura Obata
Autumn Weeds
ca. 1930s
color ink on paper
14 1/2 x 19 1/2 inches
Private Collection



Chiura Obata
Untitled (Aloe and Daffodils)
Mar. 16, 1937
color ink on paper
21 x 15 1/2 inches
Private Collection



Haruko Kohashi Obata
An Illustrated Handbook of Japanese Flower Arrangement
1940
book
Courtesy of Smithsonian Libraries, SB450.O23 1940



Unidentified
Eight Brushes, Various Lengths
mid-20th century
organic bristles and bamboo handle
11 1/2 x 12 3/4 x 1 inches (display)
Courtesy of the Obata Family



Unidentified
Box with Paint Pots
mid-20th century
kiri box; twelve white glazed ceramic pots and remains of pigment
10 1/4 x 13 5/8 x 1 1/8 inches
Courtesy of the Obata Family



Unidentified
"Great Nature" Inkstone (Suzuri)
ca. 1940
stone and wood
1 x 5 1/2 x 2 1/2 inches
Courtesy of the Obata Family



Unidentified
Dried Ink (Carved Black Lacquer Container)
mid-20th century
black ink and carved black lacquer
1 1/8 x 2 7/8 x 2 7/8 inches
Courtesy of the Obata Family



Unidentified
Seal
mid-20th century
wood
2 3/4 x 2 7/8 x 2 7/8 inches
Courtesy of the Obata Family



Unidentified
Medium Pigment Bottle (Royal Blue)
mid-20th century
glass, cork, and pigment
5 3/4 x 2 x 1 inches
Courtesy of the Obata Family



Unidentified
Medium Pigment Bottle (Green)
mid-20th century
glass, cork, and pigment
5 3/4 x 2 x 1 inches
Courtesy of the Obata Family



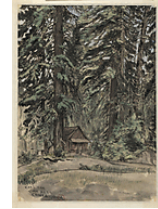
Unidentified
Medium Pigment Bottle (Ochre)
mid-20th century
glass, cork, and pigment
5 3/4 x 2 x 1 inches
Courtesy of the Obata Family



Unidentified
Medium Pigment Bottle (Fuchsia)
mid-20th century
glass, cork, and pigment
5 3/4 x 2 x 1 inches
Courtesy of the Obata Family



Chiura Obata
Carl Inn
1927
watercolor on paper
15 3/4 x 11 inches
Gift of the Obata Family



Chiura Obata
Evening at Carl Inn (Progressive Proof No. 3)
1929-30
color woodcut on paper
image: 15 5/8 x 10 7/8 inches
Gift of the Obata Family



Chiura Obata
Evening at Carl Inn (Progressive Proof No. 5)
1929-30
color woodcut on paper
image: 15 5/8 x 10 7/8 inches
Gift of the Obata Family



Chiura Obata
Evening at Carl Inn (Progressive Proof No. 6)
1929-30
color woodcut on paper
image: 15 5/8 x 10 7/8 inches
Gift of the Obata Family



Chiura Obata
Evening at Carl Inn (Progressive Proof No. 8)
1929-30
color woodcut on paper
image: 15 5/8 x 10 7/8 inches
Gift of the Obata Family



Chiura Obata
Evening at Carl Inn Progressive Proof No. 12)
1929-30
color woodcut on paper
image: 15 5/8 x 10 7/8 inches
Gift of the Obata Family



Chiura Obata
Evening at Carl Inn (Progressive Proof No. 15)
1929-30
color woodcut on paper
image: 15 5/8 x 10 7/8 inches
Gift of the Obata Family



Chiura Obata
Evening at Carl Inn (Progressive Proof No. 16)
1929-30
color woodcut on paper
image: 15 5/8 x 10 7/8 inches
Gift of the Obata Family



Chiura Obata
Evening at Carl Inn (Progressive Proof No. 25)
1929-30
color woodcut on paper
image: 15 5/8 x 10 7/8 inches
Gift of the Obata Family



Chiura Obata
Evening at Carl Inn (Progressive Proof No. 27)
1929-30
color woodcut on paper
image: 15 5/8 x 10 7/8 inches
Gift of the Obata Family



Chiura Obata
Evening at Carl Inn (Progressive Proof No. 33)
1929-30
color woodcut on paper
image: 15 5/8 x 10 7/8 inches
Gift of the Obata Family



Chiura Obata
Evening at Carl Inn (Progressive Proof No. 38)
1929-30
color woodcut on paper
image: 15 5/8 x 10 7/8 inches
Gift of the Obata Family



Chiura Obata
Evening at Carl Inn (Progressive Proof No. 47)
1929-30
color woodcut on paper
image: 15 5/8 x 10 7/8 inches
Gift of the Obata Family



Chiura Obata
Evening at Carl Inn (Progressive Proof No. 76)
1929-30
color woodcut on paper
image: 15 5/8 x 10 7/8 inches
Gift of the Obata Family



Chiura Obata
Evening at Carl Inn (Progressive Proof No. 84)
1929-30
color woodcut on paper
image: 15 5/8 x 10 7/8 inches
Gift of the Obata Family



Chiura Obata
Evening at Carl Inn (Progressive Proof No. 112)
1929-30
color woodcut on paper
image: 15 5/8 x 10 7/8 inches
Gift of the Obata Family



Chiura Obata
Evening at Carl Inn
1930
color woodcut on paper
image: 15 5/8 x 10 7/8 inches
Gift of the Obata Family



Chiura Obata
Untitled (Three Students)
Sept. 7, 1934
ink on paper
20 1/2 x 15 1/2 inches
Private Collection



Chiura Obata
Untitled (Woman in Fur Walking at Night)
ca. 1930s
ink on paper
15 1/2 x 20 1/2 inches
Private Collection



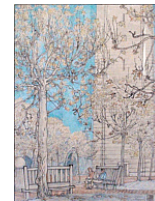
Chiura Obata
Untitled (UC Berkeley Students)
ca. 1930s
ink on paper
15 1/2 x 20 3/4 inches
Private Collection



Chiura Obata
Untitled (Campus Staircase)
ca. 1930s
ink on paper
20 3/4 x 15 1/2 inches
Private Collection



Chiura Obata
Campanile (UC Berkeley)
1934
watercolor and pen
20 x 15 inches
Private Collection



Chiura Obata
Untitled (Art Class at UC Berkeley)
Nov. 20, 1934
ink on paper
15 1/2 x 20 1/2 inches
Private Collection



Chiura Obata
Untitled (Black Panther Eating)
ca. 1930s
color ink on paper
20 1/2 x 15 1/2 inches
Private Collection



Chiura Obata
Untitled (Mountain Lion)
ca. 1930s
color ink on paper
21 x 15 1/2 inches
Private Collection



Chiura Obata
Untitled (Ostrich)
ca. 1930s
color ink on paper
19 1/2 x 14 1/2 inches
Private Collection



Chiura Obata
Untitled (Camel from the Back)
ca. 1930s
color ink on paper
15 1/2 x 20 1/2 inches
Private Collection



Chiura Obata
Untitled (Ibex)
ca. 1930s
ink on paper
15 1/2 x 20 1/2 inches
Private Collection



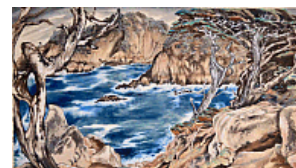
Chiura Obata
Untitled (Monkeys)
ca. 1930s
color ink on paper
15 1/2 x 20 1/2 inches
Private Collection



Chiura Obata
Untitled (Bears)
ca. 1930s
ink on paper
20 1/2 x 15 1/2 inches
Private Collection



Chiura Obata
Point Lobos
1948
color ink on silk
19 x 33 3/8 inches
Private Collection



Chiura Obata
Untitled (Fish, Bottom View)
Dec. 6, 1936
color ink on paper
15 1/2 x 20 3/4 inches
Private Collection



Chiura Obata
Untitled (Fish Heads)
June 16, 1933
ink on paper
15 1/2 x 20 1/2 inches
Private Collection



Chiura Obata
Suisun
Jan. 23, 1927
pencil on paper
12 x 18 inches
Private Collection



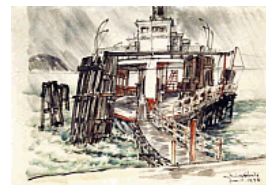
Chiura Obata
Evening
ca. 1930s
color ink on paper
17 1/2 x 23 inches
Private Collection



Chiura Obata
Fort Baker
Mar. 16, 1922
color ink on paper
11 x 15 1/2 inches
Private Collection



Chiura Obata
Untitled (Pier)
Jan. 11, 1940
watercolor on paper
10 3/4 x 15 1/2 inches
Private Collection



Chiura Obata
Widney Ranch, Saratoga
9 a.m., Aug. 13, 1926
pencil on paper
12 x 18 inches
Private Collection



Chiura Obata
Untitled (Pier)
ca. 1930s
ink on paper
15 x 20 3/4 inches
Private Collection



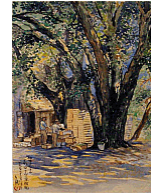
Chiura Obata
Surf Fishing, S.F. Ocean Beach
Sept. 1927
ink on paper
11 x 15 3/4 inches
Private Collection



Chiura Obata
Arabella Heights Ranch, Imagiri-san's Furo
Aug. 13, 1926
pencil on paper
18 x 12 inches
Private Collection



Chiura Obata
California Alma Mountain, Maeda-san's Fruit Farm
Aug. 3, 1922
watercolor on paper
12 x 9 inches
Private Collection



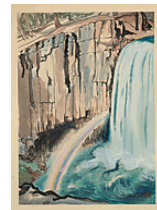
Chiura Obata
Alma Mountain, Temporary Residence
Aug. 4, 1922
watercolor on paper
9 x 12 inches
Private Collection



Chiura Obata
Alma
Aug. 6, 1922
watercolor on paper
9 x 12 inches
Private Collection



Chiura Obata
Rainbow Falls, Inyo National Forest
1930
color woodcut on paper
image: 15 5/8 x 11 inches
Gift of the Obata Family



Chiura Obata
Lake Basin in the High Sierra
1930
color woodcut on paper
image: 11 3/8 x 15 5/8 inches
Gift of the Obata Family



Chiura Obata
Silence, Last Twilight on an Unknown Lake, Johnson Peak
1930
color woodcut on paper
image: 11 x 15 5/8 inches
Gift of the Obata Family



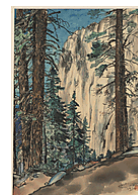
Chiura Obata
Struggle, Trail to Johnson Peak
1930
color woodcut on paper
image: 11 x 15 3/4 inches
Gift of the Obata Family



Chiura Obata
Evening Glow at Mono Lake, from Mono Mills
1930
color woodcut on paper
image: 15 3/4 x 10 7/8 inches
Gift of the Obata Family



Chiura Obata
Eagle Peak Trail
1930
color woodcut on paper
image: 15 3/4 x 11 inches
Gift of the Obata Family



Chiura Obata
Life and Death, Porcupine Flat
1930
color woodcut on paper
image: 15 1/2 x 10 7/8 inches
Gift of the Obata Family



Chiura Obata
Great Nature, Storm on Mount Lyell from Johnson Peak
1930
color woodcut on paper
image: 11 x 15 3/4 inches
Gift of the Obata Family



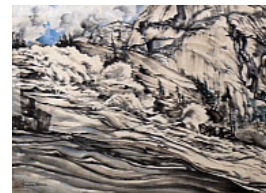
Chiura Obata
Mono Crater
1930
color woodcut on paper
image: 11 x 15 5/8 inches
Gift of the Obata Family



Chiura Obata
Mountain Stream in Autumn, Happy Isles
1937
color ink on silk
14 1/8 x 17 7/8 inches
Private Collection



Chiura Obata
Sounding River, Tuolumne Canyon
1937
color ink on paper
15 x 20 5/8 inches
Private Collection



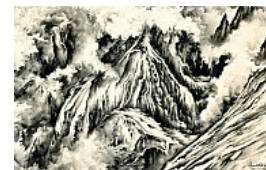
Chiura Obata
Mountain Mist (Gilroy Hot Springs)
ca. 1930s
color ink on paper
10 1/2 x 14 1/2 inches
Private Collection



Chiura Obata
Untitled (City Lights)
ca. 1930s
color ink on paper
15 1/2 x 20 3/4 inches
Private Collection



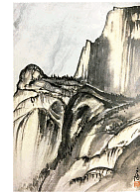
Chiura Obata
A Snow Storm Nearing Yosemite Government Center
Feb. 1939
sumi on silk
20 7/8 x 32 5/8 inches
Private Collection



Chiura Obata
Untitled (Granite Rocks)
Mar. 23, 1927
color ink on paper
15 3/4 x 11 inches
Private Collection



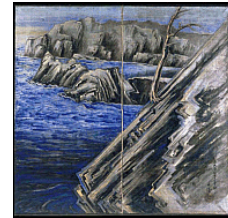
Chiura Obata
Half Dome
1927
sumi and watercolor on paper
15 3/4 x 11 inches
Private Collection



Chiura Obata
Grand Canyon
May 15, 1940
watercolor on silk
17 1/2 x 21 3/4 inches
Amber and Richard Sakai Collection



Chiura Obata
Point Lobos, Monterey, California
1922
Two-panel screen; color ink on silk screen,
69 x 70 inches
Private Collection



Chiura Obata
Scenes of Point Lobos sketchbook
June 1933
ink on paper
9 1/2 x 14 1/2 inches (open)
Private Collection



Chiura Obata
Requa (California)
July 23, 1924
ink on paper
6 1/2 x 12 inches
Private Collection



Chiura Obata
Evening Mist at Big Lagoon
July 22, 1924
ink on paper
6 1/2 x 12 inches
Private Collection



Chiura Obata
Coos Bay (Oregon)
July 23, 1924
ink on paper
11 1/2 x 6 1/2 inches
Private Collection



Chiura Obata
Departure from Berkeley, First Congregational Church, Berkeley
Apr. 30, 1942
sumi on paper
23 3/4 x 14 1/2 inches
Private Collection



Chiura Obata
Talking Through the Wire Fence
July 1942
sumi on paper
11 x 15 1/2 inches
Private Collection



Chiura Obata
Street Scene from the Grandstand Looking at the Barracks
May 31, 1942
sumi on paper
9 x 12 inches
Private Collection



Chiura Obata
Women Knitting
Sept. 22, 1942
sumi on paper
9 x 11 1/2 inches
Private Collection



Chiura Obata
Gathering in the Laundry Room, Tanforan
5 p.m., Sept. 22, 1942
sumi on paper
9 x 11 inches
Private Collection



Chiura Obata
Placerville
6:30 a.m., Sept. 23, 1942
sumi on paper
9 x 11 1/2 inches
Private Collection



Chiura Obata
In the Train
11 a.m., Sept. 24, 1942
sumi on paper
8 3/4 x 11 1/4 inches
Private Collection



Chiura Obata
Welcome Speech by Mr. Ernst for the Newcomers
8 p.m., Sept. 24, 1942
sumi on paper
9 x 11 1/2 inches
Private Collection



Chiura Obata
Arrival from Delta
Sept. 29, 1942
sumi on paper
9 x 11 1/2 inches
Private Collection



Chiura Obata
Examination Time
9:30 p.m., Sept. 29, 1942
sumi on paper
9 x 12 inches
Private Collection



Chiura Obata
The Welcoming Band
10:10 a.m., Oct. 1, 1942
sumi on paper
9 x 12 inches
Private Collection



Chiura Obata
Newcomers from Santa Anita
Oct. 8, 1942
sumi on paper
20 3/4 x 14 1/2 inches
Private Collection



Chiura Obata
At Topaz Hospital
Apr. 6, 1943
pen on paper
11 3/4 x 17 3/4 inches
Private Collection



Chiura Obata
Topaz War Relocation Center by Moonlight
ca. 1943
watercolor on paper
14 1/4 x 19 1/4 inches
Private Collection



Chiura Obata
Dust Storm, Topaz
Mar. 13, 1943
watercolor on paper
14 1/4 x 19 1/4 inches
Private Collection



Chiura Obata
Page from *Topaz Times (Turkeys)*
Nov. 26, 1942
mimeograph on paper
14 x 8 1/2 inches
Private Collection



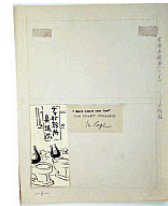
Chiura Obata
Page from *Topaz Times (Barracks)*
Dec. 24, 1942
mimeograph on paper
14 x 8 1/2 inches
Private Collection



Chiura Obata
Rapid Stream in Snow-Covered Oak Park Canyon
Jan. 1, 1943
color woodcut on paper
14 x 8 1/2 inches
Private Collection



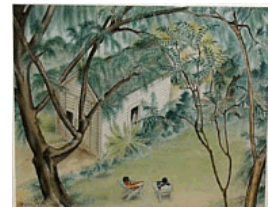
Chiura Obata
Our Toilet Congress. Where Rumors Come From
1943
pencil and ink on paper
4 1/2 x 2 inches
Private Collection



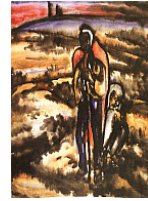
Chiura Obata
Untitled (St. Louis)
Dec. 28, 1943
color ink on paper
12 x 9 inches
Private Collection



Chiura Obata
Webster Groves, Missouri
Sept. 19, 1943
color on silk
15 1/4 x 19 1/2 inches
Private Collection



Chiura Obata
Prayer
1946
watercolor on paper
28 x 21 inches
Private Collection



Chiura Obata
Devastation
1945
watercolor on paper
13 x 18 1/2 inches
Private Collection



Chiura Obata
Morning Breeze, High Sierra
1945
colored ink on silk
19 7/8 x 32 1/4 inches
Private Collection



Chiura Obata
Untitled (Street Lights)
ca. 1950s
watercolor on paper
14 1/2 x 11 inches
Private Collection



Chiura Obata
Dusk: East Bay Bridge
Nov. 1945
color ink on paper
11 x 16 inches
Private Collection



Chiura Obata
Itsukushima Shrine Sketchbook
Nov. 12, 1971
ink on paper
4 1/2 x 3 1/2 inches (closed)
Private Collection



Chiura Obata
Christmas Cards (DeGolyer)
1958
printed cards
5 7/8 x 8 1/4 inches (each)
Private Collection



Chiura Obata
Sketchbook
1962
watercolor and ink
8 x 5 inches
Private Collection



Chiura Obata
Sketchbook
1962
ink on paper
4 x 6 x 1/4 inches
Private Collection



Chiura Obata
Beauty of Struggle
1953
Four-panel screen; oil and gilding on silk
69 x 97 inches
Joel B. Garzoli Fine Art, San Francisco, CA



Chiura Obata
Study for Beauty of Struggle
1951
oil on canvas
6 x 8 1/4 inches (unframed)
Joel B. Garzoli Fine Art, San Francisco, CA



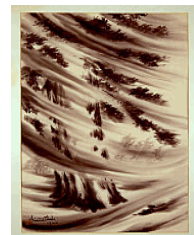
Chiura Obata
Harmony
1946
watercolor on paper
29 x 22 inches
Private Collection



Chiura Obata
Near San Simeon
Oct. 6, 1946
ink on paper
15 3/4 x 11 inches
Private Collection



Chiura Obata
Glorious Struggle
1965
sumi on silk
36 x 22 inches
Special Collections, Charles E. Young Research Library,
University of California, Los Angeles



Chiura Obata
Mussel Rock
Sept. 24, 1946
ink on paper
15 ¾ x 11
Private Collection



Chiura Obata
Landslide
1941
sumi and watercolor on paper
22 x 28 inches
Private Collection



Chiura Obata
Untitled (Self-Portrait)
n.d.
ink on paper
16 x 11 inches
Private Collection



Chiura Obata
Untitled (Young Woman Resting)
ca. 1930s
color ink on paper
15 1/2 x 20 1/2 inches
Private Collection



Chiura Obata
Untitled (Lotus)
ca. 1930s
color ink on paper
20 1/2 x 15 1/2 inches
Private Collection

