

Trevor Paglen: Sites Unseen
June 21, 2018 – January 6, 2019
Checklist

Trevor Paglen
Canyon Hangars and Unidentified Vehicle; Tonopah Test Range, NV; Distance approx. 18 miles; 12:45 pm
2006
C-print
30 x 36 inches
Courtesy of the artist and Altman Siegel, San Francisco



Trevor Paglen
Control Tower (Area 52); Tonopah Test Range, NV; Distance ~ 20 miles; 11:55 a.m.
2006
C-print
30 x 36 inches
Permanent Collection of the Utah Museum of Fine Arts, University of Utah; Purchased with funds from The Paul L. and Phyllis C. Wattis Fund



Trevor Paglen
Unmarked 737 at "Gold Coast" Terminal; Las Vegas, Nevada; Distance ~ 1 mile, 10:44 pm
2007
C-print
30 x 36 inches
Courtesy of the artist and Altman Siegel, San Francisco



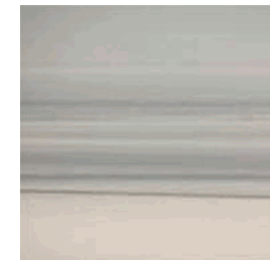
Trevor Paglen
Detachment 3, Air Force Flight Test Center #2; Groom Lake, NV; Distance ~ 26 Miles
2008
C-print
40 x 50 inches
Collection of Daelyn and Jonathan Farnham



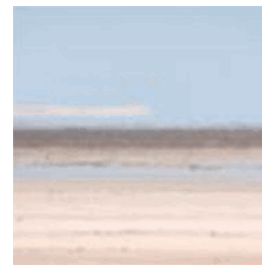
Trevor Paglen
Reaper Drone (Indian Springs, NV; Distance ~ 2 miles)
2010
C-print
30 x 36 inches
Collection Lannan Foundation



Trevor Paglen
Chemical and Biological Weapons Proving Ground; Dugway, UT; Distance ~ 42 miles; 10:51 a.m.
2006
C-print
50 x 50 inches
San Francisco Museum of Modern Art, Anonymous Fund purchase



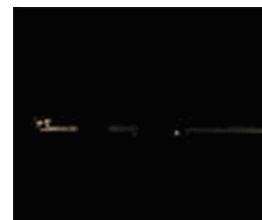
Trevor Paglen
Chemical and Biological Weapons Proving Ground/Dugway, UT/Distance approx. 42 miles/11:17 a.m.
2006
C-print
40 x 40 inches
Permanent Collection of the Utah Museum of Fine Arts, University of Utah; Purchased with funds from The Paul L. and Phyllis C. Wattis Fund



Trevor Paglen
White Sands Missile Range; Alamogordo, New Mexico; Distance ~ 35 miles
2012
C-print
60 x 48 inches
Eli and Edythe Broad Art Museum, Michigan State University, MSU purchase, funded by the Kathleen D. and Milton E. Muelder Endowment



Trevor Paglen
Illuminated Hangars; Tonopah Test Range, NV; Distance ~ 18 miles; 9:08 p.m.
2006
C-print
30 x 36 inches
Permanent Collection of the Utah Museum of Fine Arts, University of Utah; Purchased with funds from The Paul L. and Phyllis C. Wattis Fund



Trevor Paglen
Janet Pass By; Cactus Flat, NV; Distance ~ 19 miles
2006
single-channel video, no sound, 2-minute loop
Courtesy of the artist



Trevor Paglen
The Workers; Las Vegas, NV; Distance ~ 1 mile
2006
single-channel video, no sound, 9-minute loop
Courtesy of the artist



Trevor Paglen
Columbus III NSA/GCHQ-Tapped Undersea Cable, Atlantic Ocean
2015
C-print
48 x 60 inches
Collection of Alex Lakatos and Kelly Riser Lakatos



Trevor Paglen
NSA-Tapped Fiber Optic Cable Landing Site, Point Arena, California, United States
 2014
 C-print and mixed media on navigational chart
 print: 48 × 60 inches
 map: 48 × 57 inches
 Collection of Kaitlyn and Mike Krieger



Trevor Paglen
NSA-Tapped Fiber Optic Cable Landing Site, Mastic Beach, New York, United States
 2015
 C-print and mixed media on navigational chart
 print: 48 × 60 inches
 map: 48 × 63 inches
 Kadist Art Foundation



Trevor Paglen
NSA-Tapped Fiber Optic Cable Landing Site, Keawaula, Hawaii, United States
 2016
 C-print and mixed media on navigational chart
 print: 48 x 65 inches
 map: 48 x 63 inches
 The Metropolitan Museum of Art, New York, Purchase, Vital Projects Fund Inc. Gift through Joyce and Robert Menschel, 2016



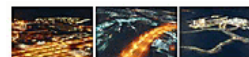
Trevor Paglen
NSA-Tapped Undersea Cables, North Pacific Ocean
 2016
 C-print
 48 x 72 inches
 Courtesy of the artist and Metro Pictures, New York



Trevor Paglen
Bahamas Internet Cable System (BICS-1) NSA/GCHQ-Tapped Undersea Cable Atlantic Ocean
 2015
 C-print
 60 × 48 inches
 Collection Lannan Foundation



Trevor Paglen
National Security Agency, Ft. Meade, Maryland; National Reconnaissance Office, Chantilly, Virginia; National Geospatial-Intelligence Agency, Springfield, Virginia
 2014
 C-prints
 18 × 27 inches each
 Smithsonian American Art Museum, Museum purchase made possible by the American Art Forum, 2014



Trevor Paglen
They Watch the Moon

2010

C-print

36 × 48 inches

Collection of Cynthia and Armins Ruis



Trevor Paglen

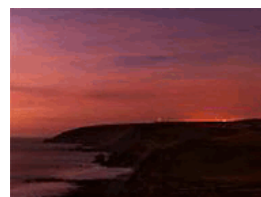
NSA/GCHQ Surveillance Base, Bude, Cornwall, UK

2014

pigment print

36 x 48 inches

Collection of Laura Poitras



Trevor Paglen

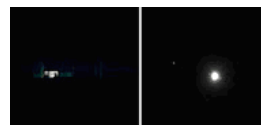
*Illuminated Workspace and Worker; National Reconnaissance Office, Chantilly, VA;
After Galileo (Jupiter and Moons)*

2008

C-print

18 × 22 inches each

Courtesy of the artist and Altman Siegel, San Francisco



Trevor Paglen

National Security Agency Utah Data Center, Bluffdale, UT

2012

C-print

36 x 48 inches

The Alford Collection of Contemporary Art, Cornell Fine Arts Museum, Rollins College



Trevor Paglen

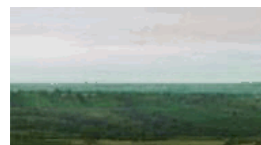
An English Landscape (American Surveillance Base Near Harrogate, Yorkshire)

2014

C-print

36 × 67 inches

Courtesy of the artist



Trevor Paglen

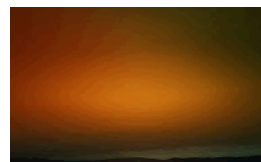
Color Study (Pelican Bay State Prison, Crescent City, CA)

2015

C-print

48 × 80 inches

Private Collection



Trevor Paglen

Color Study (Mule Creek State Prison, Ione, CA)

2016

pigment print

48 × 80 inches

Collection of Bill and Charmion Hearn



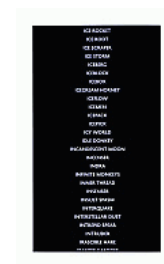
Trevor Paglen
89 Landscapes
2015
two-channel color video projection, sound, 24 minutes
Projection size: 29.5 x 8.2 feet
Courtesy of the artist and Metro Pictures, New York



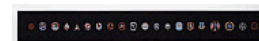
Trevor Paglen
Code Names: Classified Military and Intelligence Programs (2001--2007)
2009
wall installation
Courtesy of the artist; Metro Pictures, New York; Altman Siegel, San Francisco



Trevor Paglen
Code Names of the Surveillance State
2015
three-channel HD video installation on three TV monitors, looped, no sound
121 1/4 x 23 x 1 1/4 inches
Collection Lannan Foundation



Trevor Paglen
Symbology, Volume I
2009
twenty fabric patches, framed
4 3/8 x 4 3/8 inches each
12 x 120 x 2 1/4 inches framed
Collection of James and Maya Frey



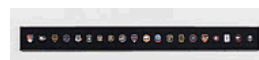
Trevor Paglen
Symbology, Volume II
2009
twenty fabric patches, framed
4 3/8 x 4 3/8 inches each
12 x 120 x 2 1/4 inches framed
Collection of Mike Wilkins and Sheila Duignan



Trevor Paglen
Symbology, Volume III
2009
twenty fabric patches, framed
4 3/8 x 4 3/8 inches each
12 x 120 x 2 1/4 inches framed
Courtesy of the artist and Altman Siegel, San Francisco



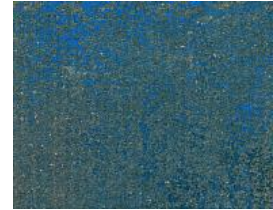
Trevor Paglen
Symbology, Volume IV
2013
twenty fabric patches, framed
4 3/8 x 4 3/8 inches each
13 x 129 inches framed
Courtesy of the artist and Metro Pictures, New York



Trevor Paglen
Symbology, Volume V
2013
twenty fabric patches, framed
4 3/8 × 4 3/8 inches each
12 × 120 × 2 1/4 inches framed
Courtesy of the artist and Altman Siegel, San Francisco



Trevor Paglen
Blue #3 (Chelsea)
2016
C-Print
71 × 88 3/4 inches
Courtesy of the artist and Metro Pictures, New York



Trevor Paglen
Seventeen Letters From the Deep State
2011
seventeen archival pigment prints on Hahnemühle paper
11 × 8 1/2 inches each
Pérez Art Museum, Miami; Museum purchase with funds provided by Irene and Irv Barr



Trevor Paglen
True Art...(CIA Special Activities Staff)
2016
high temp epoxy
50 3/4 × 50 3/4 × 3 1/8 inches
Collection of Margot and George Greig



Trevor Paglen
Operation Onymous (FBI Investigation of the Silk Road)
2016
high density urethane foam, aluminum
50 3/4 × 50 3/4 × 3 1/8 inches
Courtesy of the artist and Altman Siegel, San Francisco



Trevor Paglen
Cryptology (National Security Agency)
2018
high temp epoxy
50 3/4 × 50 3/4 × 3 1/8 inches
Courtesy of the artist and Altman Siegel, San Francisco



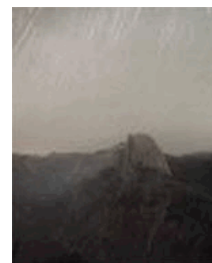
Trevor Paglen
DMSP 5B/F4 From Pyramid Lake Indian Reservation (Military Meteorological Satellite; 1973-054A)
2009
C-print
37 1/2 × 30 inches
Collection of the Oakland Museum of California, Art Acquisition Fund



Trevor Paglen
Dead Satellite with Nuclear Reactor, Eastern Arizona (Cosmos 469)
2011
C-print
48 x 60 inches
Smithsonian American Art Museum, Gift of Mike Wilkins and Sheila Duignan



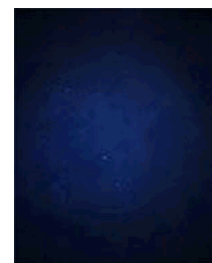
Trevor Paglen
KEYHOLE IMPROVED CRYSTAL From Glacier Point (Optical Reconnaissance Satellite; USA 186)
2008
C-print
37 1/2 x 30 inches
Private Collection



Trevor Paglen
STSS-1 and Two Unidentified Spacecraft Over Carson City (Space Tracking and Surveillance System, USA 205)
2010
C-print
48 x 48 inches
Smithsonian American Art Museum, Gift of Mike Wilkins and Sheila Duignan



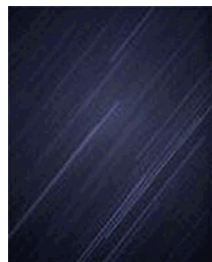
Trevor Paglen
LACROSSE/ONYX II Passing Through Draco (USA 69)
2007
C-print
59 x 47 1/2 inches
Collection of Arthur Fleischer, Jr. and Susan Fleischer



Trevor Paglen
KEYHOLE 12-3 (IMPROVED CRYSTAL) Optical Reconnaissance Satellite Near Scorpio (USA 129)
2007
C-print
59 x 47 1/2 inches
Collection of Mike Wilkins and Sheila Duignan



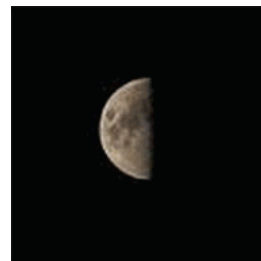
Trevor Paglen
PAN (Unknown; USA-207)
2010
C-print
60 x 48 inches
Collection of Robert Mandeltort, CPA



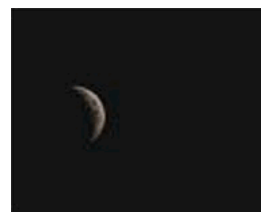
Trevor Paglen
*LACROSSE/ONYX V Near Cepheus (Synthetic Aperture Radar
Reconnaissance Satellite; USA 182)*
2008
C-print
48 × 60 inches
Dallas Cowboys Art Collection



Trevor Paglen
*LACROSSE/ONYX V Radar Imaging Reconnaissance Satellite
Crossing the Disk of the Moon (USA 182)*
2007
C-print
35 × 35 inches
Collection of Nion McEvoy



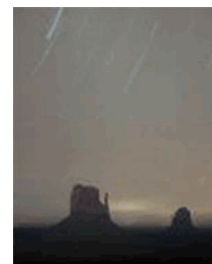
Trevor Paglen
Dead Military Satellite (DMSP 5D-F11) Near the Disk of the Moon
2010
C-print
24 × 30 inches
Collection of Joseph and Debbie Goldyne



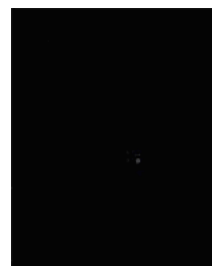
Trevor Paglen
Dead Military Navigation Satellite (COSMOS 985) Near the Disk of the Moon
2012
C-print
44 × 36 inches
Courtesy of the artist; Metro Pictures, New York; Altman Siegel, San Francisco



Trevor Paglen
*DMSP F16 Over Monument Valley, Navajo Nation (Military Meteorological Satellite;
2003-048A)*
2009
C-print
30 × 24 inches
Courtesy of Claudia Altman-Siegel and Adam Goldyne



Trevor Paglen
*USA 193 Near Alioth (Code Name Unknown) Next-Generation Reconnaissance Satellite
Shot Down by Navy in February 2008*
2007
C-print
60 × 48 inches
Courtesy of the artist and Altman Siegel, San Francisco



Trevor Paglen
MILSTAR 6 From Glacier Point (Strategic and Tactical Relay Satellite; USA 169)
2009
C-print
50 × 40 inches
Private Collection, Dallas



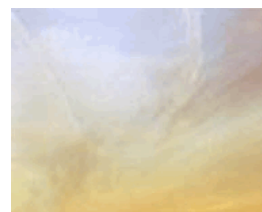
Trevor Paglen
MISTY 2/DECOY Near Altair (Decoy Stealth Satellite; USA 144deb)
2011
C-print
48 × 60 inches
Collection of Genie and Gary Short



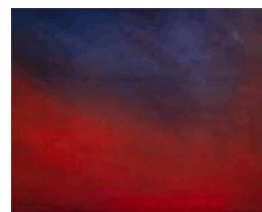
Trevor Paglen
Time Study (Predator; Indian Springs, NV)
2010
eight gold-toned albumen prints
5 × 7 inches each
20 3/4 × 40 3/4 inches framed
Collection of Nion McEvoy



Trevor Paglen
Untitled (Reaper Drone)
2010
C-print
48 × 60 inches
Collection of Allison Card



Trevor Paglen
Untitled (Reaper Drone)
2010
C-print
48 × 60 inches
Collection of Lucy Sun and Warren Felson



Trevor Paglen
Untitled (Reaper Drone)
2012
C-print
48 × 60 inches
The Alfond Collection of Contemporary Art, Cornell Fine Arts Museum, Rollins College



Trevor Paglen
Untitled (Predator Drone)
2012
C-print
48 × 60 inches
Collection of Nicholas Quinn Rosenkranz



Trevor Paglen
Untitled (Predator Drone)
2012
C-print
48 × 60 inches
Collection of Robert Longo



Trevor Paglen
Untitled (Predator Drone)
2013
C-print
48 × 60 inches
Collection of Alex Lakatos and Kelly Riser Lakatos



Trevor Paglen
Untitled (Reaper Drone)
2013
C-print
48 × 60 inches
Antonio and Annamaria Maccaferri Collection



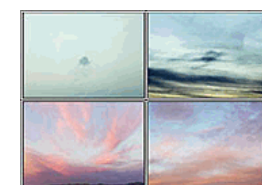
Trevor Paglen
Drone Vision
2010
HD video, no sound, 5 minutes 20 seconds
Courtesy of the artist; Metro Pictures, New York; Altman Siegel, San Francisco



Trevor Paglen
Near Nogales Maximally Stable Extremal Regions; Good Features to Track
2017
pigment print
28 1/2 × 40 inches
Courtesy of the artist and Metro Pictures, New York



Trevor Paglen
Four Clouds Scale Invariant Feature Transform; Maximally Stable Extremal Regions; Skimage Region Adjacency Graph; Watershed
2017
quadriptych, four pigment prints
33 × 46 inches each
Collection of Jaime Daez



Trevor Paglen
It Began As a Military Experiment
2017
set of ten pigment prints
13 5/8 × 10 1/2 inches each
Collection of Rory and John Maxon Ackerly



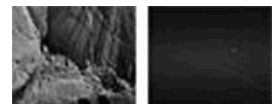
Trevor Paglen
Shoshone Falls, Hough Transform; Haar
2017
silver gelatin print
48 × 60 inches
Collection of Rory and John Maxon Ackerly



Trevor Paglen
The Fence (Lake Kickapoo, Texas)
2010
C-print
50 × 40 inches
Amon Carter Museum of American Art, Fort Worth, Texas, Purchase with funds provided
by Finis Welch, Jeanne Gulner, and Kenneth E. Rees



Trevor Paglen
*Artifacts (Anasazi Cliff Dwellings, Canyon de Chelly, Spacecraft in Perpetual
Geosynchronous Orbit, 35,786 km Above Equator)*
2010
two C-prints
40 × 50 inches each
Collection of John B. Roy II



Trevor Paglen
The Last Pictures Mosaic
2013
set of one hundred prints or images
Courtesy of the artist



Trevor Paglen
The End of the Space Age
2012
C-print
60 × 48 inches
Courtesy of the artist and Metro Pictures, New York



Trevor Paglen
The Last Pictures (Warning From Space; Demonstration of Eating, Licking, and Drinking)
2012
set of two gelatin silver prints
24 × 32 inches each
Courtesy of the artist and Metro Pictures, New York



Trevor Paglen
Angelus Novus
2012
C-print
42 1/4 × 34 1/2 inches
Courtesy of the artist and Metro Pictures, New York



Trevor Paglen
The Last Pictures (Alternate Artifact)
2013
Silver-plated aluminum disk
8 × 8 × 1/2 inches
Courtesy of the artist and Metro Pictures, New York



Trevor Paglen
The Last Pictures/EchoStar XVI Launch and Preliminary Orbit
2012
two C-prints
38 × 42 1/2 inches each
UBS Art Collection



Trevor Paglen
The Tower of Babel
2012
digitally retouched C-print
69 3/4 × 90 1/2 inches
Collection of Arthur Fleischer, Jr. and Susan Fleischer



Trevor Paglen
The Last Pictures (Development, Launch, and Deployment Patches)
2012
three fabric patches, framed
4 3/8 × 4 3/8 inches each
12 5/8 × 25 1/2 inches framed
Courtesy of the artist and Metro Pictures, New York



Trevor Paglen
Timeline of Earth History
2012
adhesive wall material
Courtesy of the artist



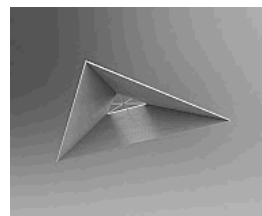
Trevor Paglen
Gold Artifact
2013
etched gold plated disk
3/8 × 4 7/8 inches
Courtesy of the artist and Metro Pictures, New York



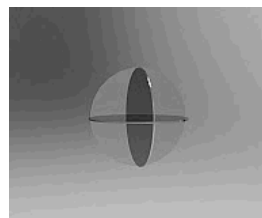
Trevor Paglen
Prototype for a Nonfunctional Satellite (Design 4; Build 4)
2013
mixed media
approx. 144 × 144 × 144 inches
Courtesy of the artist; Metro Pictures, New York; Altman Siegel, San Francisco



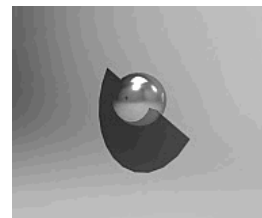
Trevor Paglen
Triangle
2018
steel and lacquer
12 × 14 1/4 × 3 inches
Courtesy of the artist and Altman Siegel, San Francisco



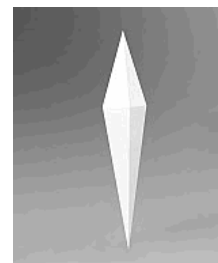
Trevor Paglen
Circular Reflector
2018
polished stainless steel
15 × 15 × 15 inches
Courtesy of the artist and Altman Siegel, San Francisco



Trevor Paglen
Evolved Shuttlecock
2018
polished stainless steel
14 × 5 × 14 inches
Collection of Nion McEvoy



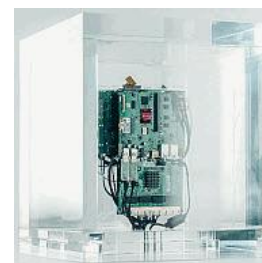
Trevor Paglen
Diamond Reflector
2018
lacquered steel
85 × 7 × 7 1/2 inches
Courtesy of the artist and Altman Siegel, San Francisco



Trevor Paglen
Ring (Möbius Variation)
2018
lacquered fiberglass
32 × 4 × 32 inches
Courtesy of the artist and Altman Siegel, San Francisco



Trevor Paglen
Autonomy Cube
2015
Plexiglas cube with computer components
19 5/8 × 19 5/8 × 19 5/8 inches
Courtesy of the artist; Metro Pictures, New York; Altman Siegel, San Francisco



Trevor Paglen
Trinity Cube
2017
irradiated glass from the Fukushima Exclusion Zone and Trinitite
7 7/8 × 7 7/8 × 7 7/8 inches
Courtesy of the artist and Metro Pictures, New York



Trevor Paglen
Image Operations
2018
HD video projection, sound, 24 minutes
Courtesy of the artist; Metro Pictures, New York; Altman Siegel, San Francisco



Trevor Paglen

"Fanon" (Even the Dead Are Not Safe) Eigenface

2017

dye sublimation print

48 × 48 inches

The Alford Collection of Contemporary Art, Cornell Fine Arts Museum, Rollins College



Trevor Paglen

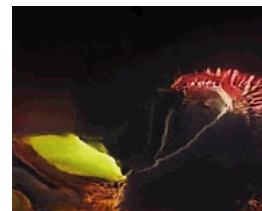
Venus Flytrap (Corpus: American Predators) Adversarially Evolved Hallucination

2017

dye sublimation print

21 1/2 × 26 7/8 inches

Collection of Nion McEvoy



Trevor Paglen

Highway of Death (Corpus: Aftermath of the First Smart War) Adversarially Evolved Hallucination

2017

dye sublimation print

32 × 40 inches

Courtesy of the artist and Metro Pictures, New York



Trevor Paglen

Vampire (Corpus: Monsters of Capitalism) Adversarially Evolved Hallucination

2017

dye sublimation print

60 × 48 inches

Collection of mark sanford gross & billy ocallaghan



Trevor Paglen

Rainbow (Corpus: Omens and Portents) Adversarially Evolved Hallucination

2017

dye sublimation print

21 1/2 × 26 7/8 inches

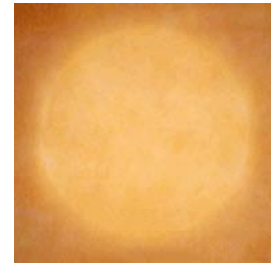
Collection of Nion McEvoy



Trevor Paglen
Shark, Linear Classifier
2018
dye sublimation print
48 × 48 inches
Courtesy of the artist and Altman Siegel, San Francisco



Trevor Paglen
The Sun, Linear Classifier
2018
dye sublimation print
48 × 48 inches
Courtesy of the artist and Altman Siegel, San Francisco



Trevor Paglen
"Goldfish," Linear Classifier, ImageNet Dataset
2016
dye sublimation print
36 × 36 inches
Collection of Alex Lakatos and Kelly Riser Lakatos

