

System Parts:

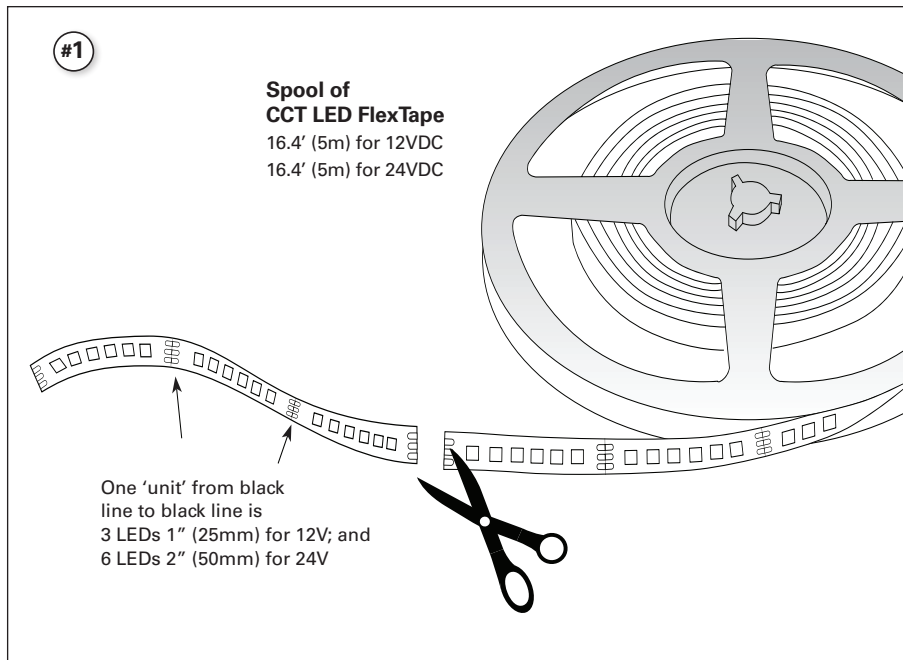
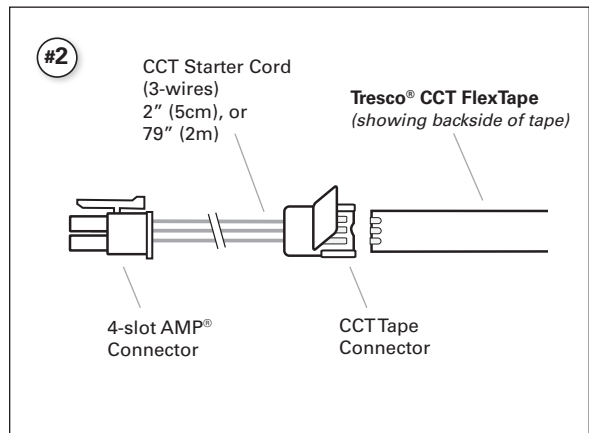
- (1) Spool of CCT LED FlexTape (12V) 16.4 ft (5m) ... P/N: L-FLXTPE-12CCT-1
- (1) Spool of CCT LED FlexTape (24V) 16.4 ft (5m) ... P/N: L-FLXTPE-24CCT-1
- (1) Power Supply, Class 2, 12VDC/60W max (or) 24VDC/96W max
- (1) CCT Controller (required for color mixing)
- (1) CCT Starter Cord 2" (5cm) P/N: L-TPEPKT-2IN-CCT-1, (or) ...
- (1) CCT Starter Cord 79" (2m) P/N: L-TPEPKT-2M-CCT-1

Accessories: (see below)

Installation Instructions

CCT LED FlexTape Light

12VDC, 3.0W/ft. & 24VDC, 3.0W/ft.



READ ALL INSTRUCTIONS BEFORE INSTALLING SYSTEM

Before beginning installation, be sure power is turned OFF to the light system

Tresco Lighting's LED FlexTape light system is designed to adhere to a smooth, clean surface (indoor locations only).

NOTATIONS to help determine installation layout:

- Wattage for both 12VDC and 24VDC systems is 3.0W/ft.
- Maximum linear run of CCT FlexTape from one Starter Cord is 16.4' (5m) for 12VDC and 30' (9m) for 24VDC.
- Maximum length of CCT FlexTape on all runs from a single 12VDC/60W Power Supply is 20' (6m); from a 24VDC/96W Power Supply is 30' (9m).
- Minimum linear run is one 'unit' of 3 LEDs for 12V and 6 LEDs for 24V. The length of each CCT FlexTape 'unit' from line-to-line, for 12V is 1" (25mm), and 24V is 2" (50mm). (see Fig. 1)

Tresco's CCT FlexTape can be used with any Class 2, 12VDC/60W or 24VDC/96W Power Supply. As an option, Tresco® Class 2, 12VDC & 24VDC Power Supplies are available:

- 12VDC/60W max. part no.: L-DC-SLELT60-1, and
- 24VDC/96W max. part no.: L-24VDC-ELT96-1

For more Power Supply options, see Tresco® Specifications Catalog.

IMPORTANT: See separate instruction sheets for additional installation information on Power Supplies and (optional) CCT Controllers.

Installing the CCT Starter Cord:

1. Roughly lay out the lighting system before installation to verify final positioning of all components.
2. Route the Starter Cord so the CCT Tape connector (see Fig. 2) is positioned exactly where you want the FlexTape to begin. Mount the Starter Cord with insulated staples or plastic ties.
3. The 4-slot AMP® Connector on the Starter Cord (see Fig. 2) attaches to a Tresco® CCT Controller (optional) powered by a Class 2 Power Supply max 60W 12VDC or 96W 24VDC. (see separate instruction sheets for more installation information).

To extend the length of the Starter Cord, use Tresco® CCT Extension Cords with '4-slot AMP' connectors on both ends. Available in the following lengths:

- 2 feet (60cm) part no.: L-CCTEXT-60, and
- 4 feet (120cm) part no.: L-CCTEXT-120

Next, follow **Steps 4 to 11** on page 2 to install the CCT FlexTape.

Accessories: Various link cords and optional accessories are available (see catalog for more details).

(Instructions continued on page 2)

Installation Instructions

CCT LED FlexTape Light

12VDC, 3.0W/ft. & 24VDC, 3.0W/ft.

(Continued from page 1)

Installing the CCT FlexTape:

4. Cut FlexTape to length. Use the black lines on the FlexTape as a guide to cut the tape, but slightly back off of the black line and make your cut to give maximum surface area for the contacts (see Fig. 3A). Note: cutting anywhere else but on the contacts will damage that 'unit' of 3 or 6 LEDs. Do NOT cut on soldered joints.

5. Before inserting the FlexTape into the Starter Cord's CCT Tape Connector, peel off approximately 1" (25mm) of backing from the FlexTape. The Connector will not close properly without the tape's backing removed.

6. Position CCT Tape Connector so its tab is facing down, and FlexTape is facing up (see Fig. 3B). Next, make sure to match-up the contacts ...

IMPORTANT: The FlexTape's contacts should match-up with the Starter Cord's color-coded wires (R-W-Y) (red wire is positive +). See small markings on the cut end of the FlexTape (+-CW-WW) (see Fig. 3C). The connection should be:

R to +; W to CW; and Y to WW.

If needed, rotate the FlexTape section 180° (end-to-end) to match-up.

7. With contacts matching as noted above, insert the FlexTape into the slot in the Connector. (see Fig. 3B). The 'notch' in the Connector allows the FlexTape and its first LED diode to slide further into the slot until seated.

After firmly seated, flip the Connector with FlexTape over so that the Connector tab is now facing up (see Fig. 3D). Then snap the tab down. **Lock the tab in place by pushing down with a small screwdriver on both corners of the tab.**

8. If you continue the FlexTape run, use CCT Link Cords with CCT Tape Connectors on both ends, or CCT Back-to-Back (BTB) connectors. Connect the Link Cord's CCT Tape Connector or the BTB to the loose end of the last FlexTape section. Again make sure to match-up the color-coded wires (R-W-Y).

Tresco® CCT Link Cord part no.: L-TPELNKx-CCT-1
(x equals various length options)

Tresco® CCT BTB connector part no.: L-TPE-BTB-CCT-1

Continue to link FlexTape sections until all links are made in the run.

Note: Maximum linear run of CCT FlexTape from one Starter Cord is 16.4' (5m) for 12VDC and 30' (9m) for 24VDC.

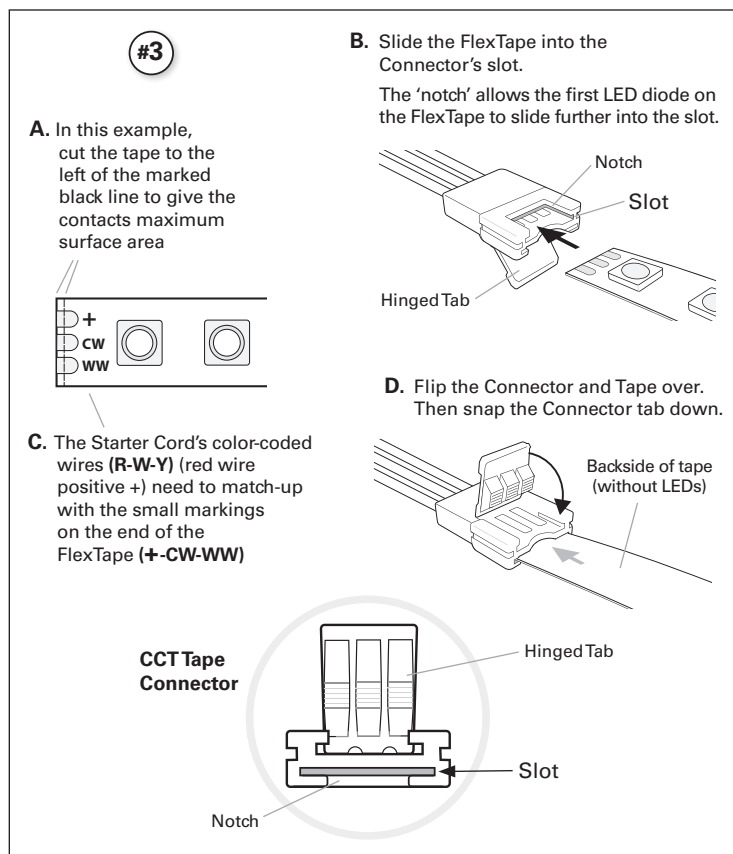
Use insulated staples or plastic ties to secure all cords.

9. After all links are completed to the FlexTape run, peel off the backing from the FlexTape sections exposing the adhesive side of the tape. Position the tape on any smooth, flat surface (cabinet, shelf, etc.) and firmly rub down the tape IN BETWEEN the LEDs, do NOT push down on the LEDs themselves. The tape should firmly adhere to clean surfaces that are smooth and clear of oil, grease, dust or dirt.

Note: The 3M™ adhesive is pressure sensitive tape. Pressure must be applied in order for proper adhesion to take place. Not intended for rough or raised surfaces.

10. To add more FlexTape runs from a new Starter Cord, repeat the steps above.

11. Double-check all connections.



IMPORTANT SAFETY INSTRUCTIONS

CAUTION: To reduce the risk of fire, electric shock, or injury to persons:

- NOT intended for outdoor use or where exposed to excessive moisture.
- FlexTape is very flexible, but CANNOT be kinked or creased or the internal contacts may break.
- Use proper Class 2, Power Supply for the lighting system – e.g. 12VDC Power Supply with 12V FlexTape; and 24VDC Power Supply with 24V FlexTape.
- Use only insulated staples or plastic ties to secure cords.
- Route and secure cords so that they will not be pinched or damaged when the cabinet is pushed to the wall.
- NOT intended for use in enclosed or recessed installations, such as in ceilings, soffits or walls.
- Do not run line voltage power supply cord through holes in walls, ceilings, floors or similar permanent structure.
- If required, a licensed electrician should be consulted for wiring through permanent structures. When mounting and wiring light system, follow all local electric codes and the National Electrical Code (NEC).
- Disconnect electrical power before cutting light or modifying system.
- Individual LEDs cannot be replaced. Instead replace entire FlexTape section.

This light is intended to be used as cabinet fixtures on metal, wood, particle board or other structurally sound, heat-resistant surface. Care should be taken during and after installation to avoid contact of light with wiring, cord, or any combustible material.

Save these instructions for future reference.
For technical assistance, call 1-800-227-1171



Tresco Lighting by Rev-A-Shelf
12400 Earl Jones Way
Louisville, KY 40299

Tel: 800-227-1171

Fax: 502-491-2215

Email: cservice@trescolighting.com

Web: www.trescolighting.com

