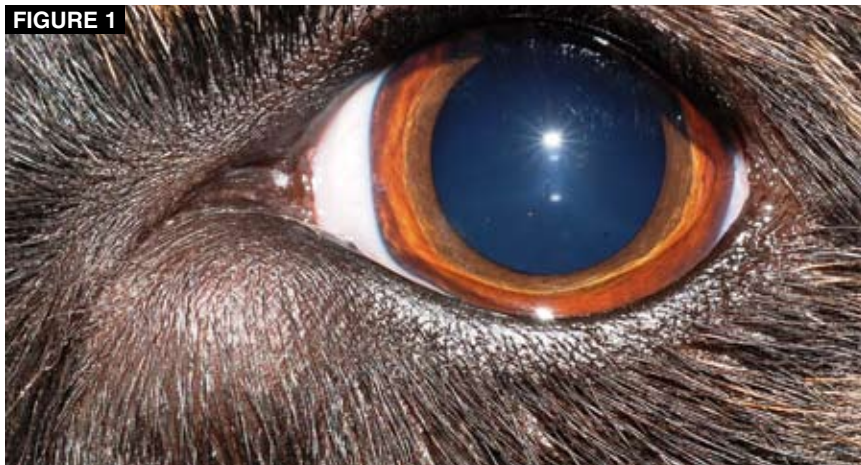
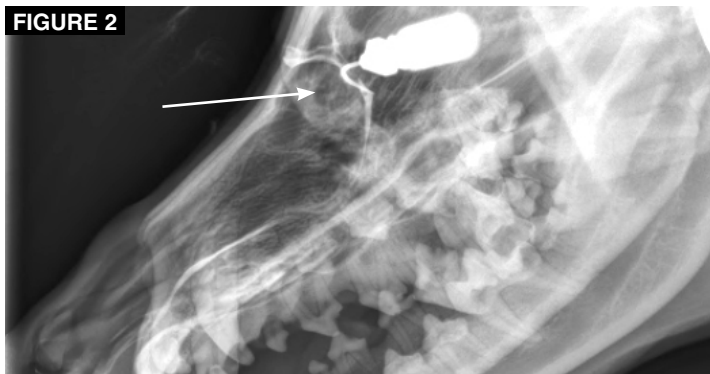


FIGURE 1



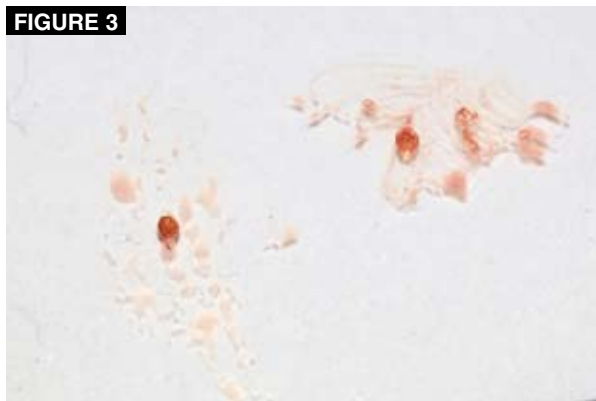
The swelling.

FIGURE 2



**Contrast radiography.** The radiopaque solution flushed through the nasolacrimal duct normally. The cyst (arrow) seemed to be external to the tear duct and associated structures.

FIGURE 3



Granules from the cyst.

# Here's Sand in Your Eye

**Stacy Vaka, LVT**

The Hope Center for Advanced Veterinary Medicine  
Vienna, Virginia

A 2-year-old, female Louisiana Catahoula leopard dog mix was referred to us for evaluation of swelling of the medial canthus (inner corner) of the left eye (**FIGURE 1**). The swelling had recently become firm but had been present when the patient lived in California a few months before. The owner wondered if the swelling could be due to a sand granule under the skin.

Our ophthalmologist diagnosed the swelling as a cyst, and a contrast radiography study confirmed that it did not communicate with the nasolacrimal duct system (**FIGURE 2**). We drained the swelling, but when it returned within a week, surgery was performed to remove the entire cyst pocket.

Within the pocket were several granules (**FIGURE 3**) that we could not identify, so a biopsy was ordered. The laboratory found cholesterol deposits within the cyst—possibly a reaction to a foreign body. The owner's sand granule theory may have been correct after all! The patient recovered uneventfully and has not developed any more swellings.

**Do You Have a Unique Case to Share?** Send it to us along with high-resolution clinical images and/or video that help tell the story. Provide a 100- to 300-word description of what the images show, how the case was treated, and the animal's recovery. We pay **\$75** per published case. Send submissions by **e-mail** to [editor@VetTechJournal.com](mailto:editor@VetTechJournal.com), or **mail** to Veterinary Technician, 780 Township Line Road, Yardley, PA 19067.