

CONFIGURATION: 2BR / 2BA PLUS CASITA

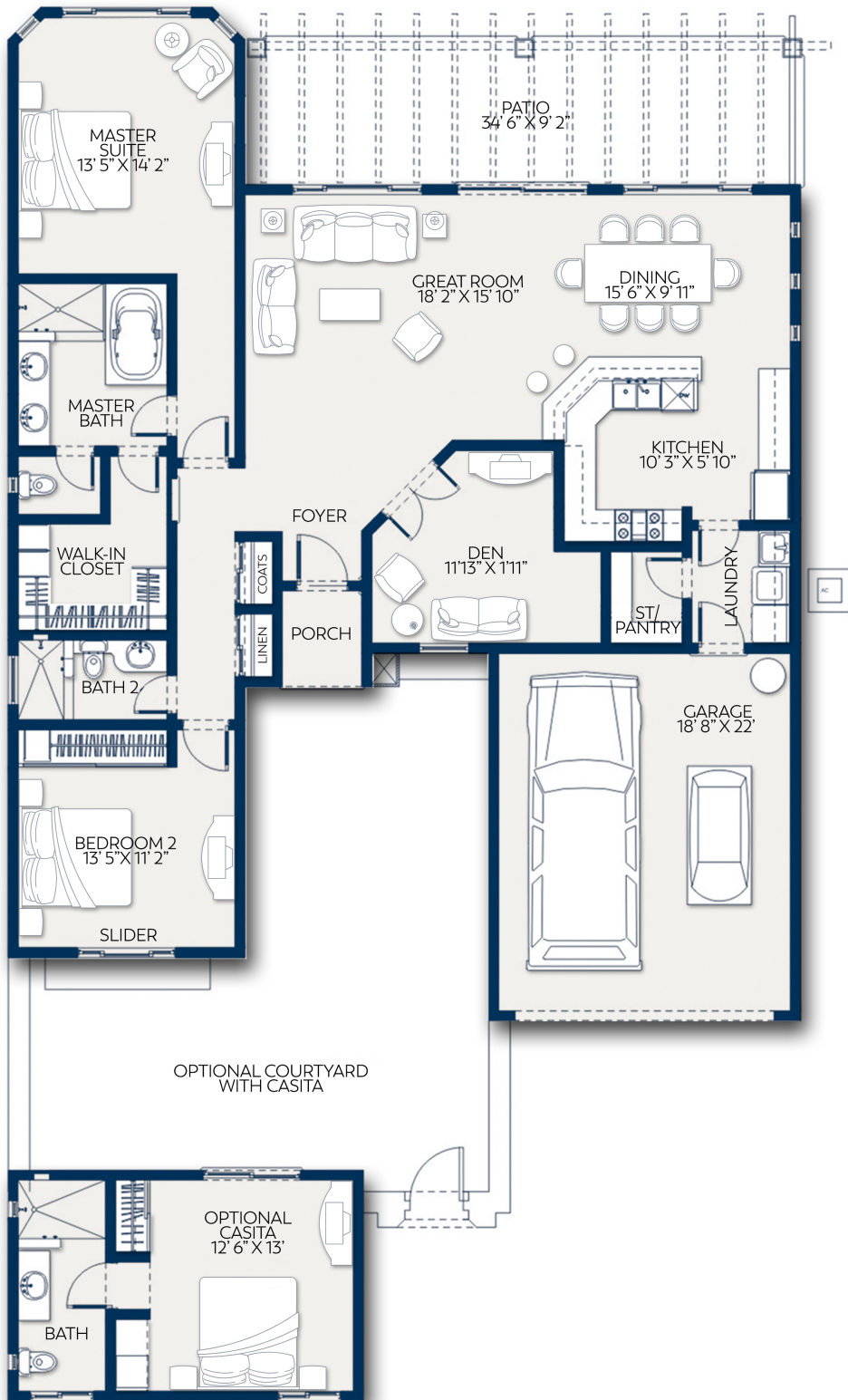
SQ. FT. 2129 AC SQ FT

LOT #

SQ. M. 198 AC SQ M

NOTES:

PRICE:



## CASA DE LA ESTRELLA

### FEATURES

- Detached casita
- Private courtyard
- Granite countertops
- Breakfast bar
- Spacious 10' high ceilings
- Travertine tile flooring
- Master suite with walk-in closet, shower and bathtub
- Central AC with individual controls in common areas and bedrooms
- GE stainless steel appliances
- Walk-in pantry
- Full size washer and dryer